

M22™

All you need.
All in one.



M22™

All you need.

All in one.



M22 is a modular multi-application platform for the treatment of over 30 skin conditions and hair removal. Used by physicians around the world, M22 enables you to treat more types of patients and conditions with better outcomes.

Multiple Technologies in One Modular System



Universal IPL

- Optimal Pulse Technology (OPT™)
- Single handpiece with changeable filters and lightguides
- For IPL skin treatments using photorejuvenation



ResurFX™

- The only True fractional non-ablative, with CoolScan™ scanner
- No disposables
- For skin resurfacing



Multi-Spot™ Nd:YAG

- The only one with Multiple Sequential Pulsing (MSP)
- 2 sized lightguides, changeable in seconds
- For treatment of leg veins and vascular lesions



Q-Switched Nd:YAG

- Homogenous beam profile for enhanced treatment safety and efficacy
- For skin toning*, dark tattoos removal, and combination treatments

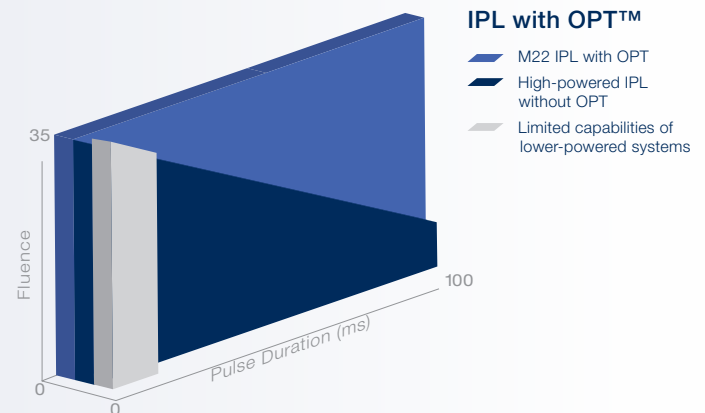
*Skin toning by treatment of pigmented lesions

Advanced. Intuitive. Affordable.

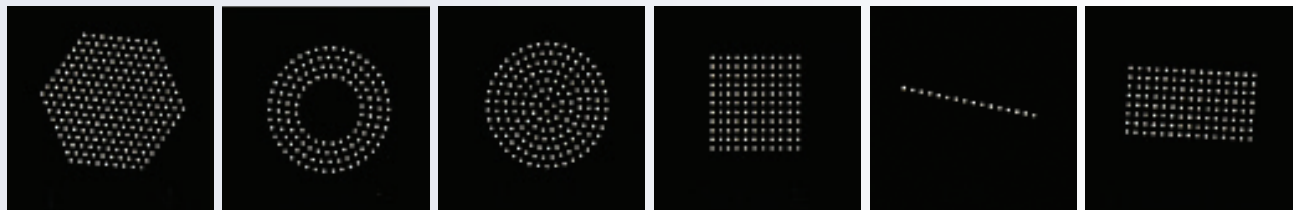
More than 30 indications for use, and the ability to combine multiple technologies in the same treatment session for amazing results.

Optimal efficacy and safety with unique technologies

- Optimal Pulse Technology – OPT™
- Multiple Sequential Pulsing – MSP
- CoolScan™ scanner
- Homogenous “Top-Hat” beam profile



CoolScan™ Shapes



The only system with user presets for all popular indications for use



No disposables – Ability to be free of disposables with each of the 4 modules

A trusted path to superior outcomes

Before

After

Rosacea treatment with IPL

Courtesy of Gilly Munavalli, MD



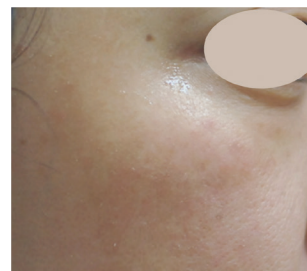
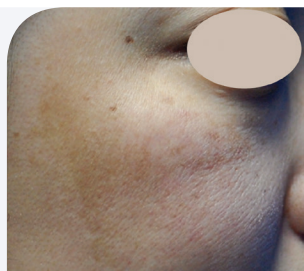
Skin resurfacing with ResurFX™

Courtesy of Mitchel P. Goldman, MD



Skin toning* treatment with Q-Switched Nd:YAG

Courtesy of Yuanhong Li, MD



PWS treatment with Nd:YAG

Courtesy of Matteo Tretti Clemantoni, MD



“As a dermatologist, I’m always looking for laser treatments that strike the right balance between efficacy and patient comfort. With ResurFX, we have a solution that improves facial and body skin tone and texture with minimal discomfort and downtime.”

—
Dr. Arielle N. B. Kauvar, MD, Director New York Laser & Skin Care

*Skin toning by treatment of pigmented lesions

Specifications

Universal IPL

| | |
|----------------------|--|
| Spectrum | 515-1200 nm |
| ExpertFilters | 515, 560, 590, 615, 640, 695, 755 nm |
| Fluence | 10-35 J/cm ² |
| Pulse Duration | 4-20 ms |
| Pulse Delay | 5-150 ms |
| Pulse Characteristic | Multiple Sequential Pulsing |
| Repetition Rate | Up to 1 Hz |
| Spot Size | 35 x 15 mm ² ; 15 x 8 mm ² |
| Cooling | Continuous contact cooling |

MultiSpot™ Nd:YAG

| | |
|----------------------|-----------------------------|
| Wavelength | 1064 nm |
| Fluence | 20-225 J/cm ² |
| Pulse Duration | 2-20 ms |
| Pulse Delay | 5-150 ms |
| Pulse Characteristic | Multiple Sequential Pulsing |
| Repetition Rate | Up to 1 Hz |
| Spot Size | 6 mm, 2x4 mm ² |
| Cooling | Continuous contact cooling |

ResurFX™

| | |
|----------------------|---|
| Wavelength | 1565 nm |
| Pulse Energy | 10-70 mJ per micro-beam |
| Pulse Characteristic | CoolScan™ Scanner |
| Pattern Shapes | Line, square, rectangle, circle, donut, hexagon |
| Beam Density | Up to 500 micro-beams/cm ² |
| Repetition Rate | 0.5-2 Hz |
| Spot Size | Up to 18 mm |
| Cooling | Continuous contact cooling |

Q-Switched Nd:YAG

| | |
|----------------------|--------------------------|
| Wavelength | 1064 nm |
| Fluence | 1.6-14 J/cm ² |
| Pulse Duration | 6-8 nsec |
| Pulse Characteristic | Top-Hat |
| Repetition Rate | 0.5-5.0 Hz |
| Spot Size | 2, 2.5, 3.5, 5 and 6 mm |

System specifications

| | |
|------------------------------|--|
| Dimensions [without ResurFX] | 44 x 50.5 x 47 cm (17 x 20 x 18.5 inches) |
| Dimensions [with ResurFX] | 44 x 50.5 x 61.5 cm (17 X 20 X 24 inches) |
| Weight [without ResurFX] | 40 kg / 88 lbs |
| Weight [with ResurFX] | 55 kg / 121 lbs |
| Electrical requirements | 100 – 240 VAC ±10%, 15A max., 50/60 Hz, single phase, dedicated line |

© 2014 All Rights Reserved. The Lumenis Group of Companies. PB-1003627 Rev A. Lumenis, its logo, M22, OPT, Multiple-Sequential Pulsing, ExpertFilters, SapphireCool lightguides, ResurFX and CoolScan are trademarks or registered trademarks of the Lumenis Group of Companies. Specifications are subject to change without notice Lumenis is ISO 13485:2003 certified. M22 is CE approved. | M22 is FDA cleared.

AMERICAS

San Jose, CA, USA
 T +1 408 764 3000
 +1 877 586 3647
 F +1 408 764 3999

EMEA

Dreieich Dreieichenhain, Germany
 T +49 6103 8335 0
 F +49 6103 8335 300
 Roma (RM), Italy
 T +39 06 90 75 230
 F +39 06 90 75 269
 Hertfordshire, UK
 T +44 20 8736 4110
 F +44 20 8736 4119

JAPAN

Tokyo, Japan
 T +81 3 6743 8300
 F +81 3 6743 8301

ASIA / PACIFIC

Beijing, China
 T + 86 10 5737 6677
 Gurgaon, India
 T + 91 124 422 07 95
 Kowloon, Hong Kong
 T + 852 217 428 00
 F + 852 272 251 51

For more information:
www.lumenis.com