



Philips  
LED-backlit LCD monitor  
with SmartImage

### S-line

27" / 68.6cm  
Quad HD (2560 x 1440)

272S4LPJCB



## Essential features, efficient performance

for maximum productivity

The Philips LED display using 25% recycled materials and PVC, BFR free housing is ideal for eco-friendly productivity

#### Great performance

- Crystalclear images with Quad HD 2560x1440 pixels
- Less eye fatigue with Flicker-Free technology
- MultiView enables active dual connect and view at same time
- SmartImage presets for easy optimized image settings

#### Designed for people

- SmartErgoBase enables people-friendly ergonomic adjustments
- Low bezel-to-table height for maximum reading comfort
- Built-in stereo speakers for multimedia
- MHL technology for enjoying mobile content on big screen
- SmartConnect with HDMI, MHL, DisplayPort, DVI, and VGA

#### Sustainable Eco-design

- LED Technology ensures low power and natural colors
- PowerSensor saves up to 80% energy costs
- 25% recycled material with EPEAT Gold

# PHILIPS

# Highlights

## Crystalclear images

These latest Philips screens deliver Crystalclear, Quad HD 2560x1440 or 2560x1080 pixel images. Utilizing high performance panels with high density pixel count, enabled by high bandwidth sources like Displayport, HDMI, Dual link DVI, these new displays will make your images and graphics come alive. Whether you are demanding professional requiring extremely detailed information for CAD-CAM solutions, using 3D graphic applications or a financial wizard working on huge spreadsheets, Philips displays will give you Crystalclear images.

## Flicker-Free technology

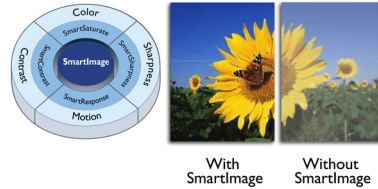


Due to the way brightness is controlled on LED-backlit screens, some users experience flicker on their screen which causes eye fatigue. Philips Flicker-Free Technology applies a new solution to regulate brightness and reduce flicker for more comfortable viewing.

## MultiView technology

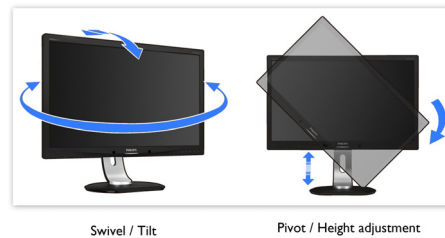
With the ultra high resolution Philips MultiView display you can now experience a world of connectivity in a comfortable way whether at office or at home. MultiView enables active dual connect and view so that you can work with multiple devices like PC and Notebook side-by-side simultaneously, making complex multi-tasking work a breeze. Watching live football feed from your set-top box on right side, while browsing the Internet from your notebook on the left is now easy. You may want to keep an eye on the live news feed with audio in the small window, while working on your latest blog.

## SmartImage



SmartImage is an exclusive leading edge Philips technology that analyzes the content displayed on your screen and gives you optimized display performance. This user friendly interface allows you to select various modes like Office, Photo, Movie, Game, Economy etc., to fit the application in use. Based on the selection, SmartImage dynamically optimizes the contrast, color saturation and sharpness of images and videos for ultimate display performance. The Economy mode option offers you major power savings. All in real time with the press of a single button!

## SmartErgoBase



The SmartErgoBase is a monitor base that delivers ergonomic display comfort and provides cable management. The base's people-friendly height, swivel, tilt and rotation angle adjustments position the monitor for maximum comfort that can ease the physical strains of a long workday; cable management reduces cable clutter and keeps the workspace neat and professional.

## Built-in stereo speakers

A pair of high quality stereo speakers built into a display device. It can be visible front firing, or invisible down firing, top firing, rear firing, etc depending on model and design.

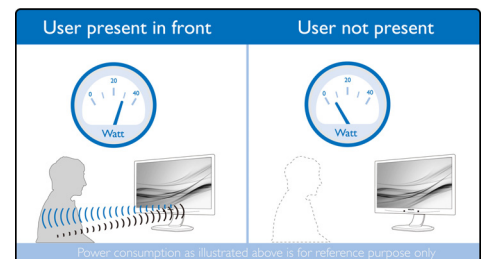
## SmartConnect

With a plethora of connectivity, these Philips displays come equipped with multi connections like VGA, DVI-D, DisplayPort, universal HDMI connector, MHL enabling you to enjoy high resolution uncompressed video and audio content. Regardless of what source you use, you can rest assured that this Philips display will ensure your investment is not made obsolete any time soon!

## LED Technology

White LED's are solid state devices which light up to full, consistent brightness faster saving startup time. LED's are free from mercury content which allows for eco-friendly recycling and disposal process. LED's allow for better dimming control of LCD backlight, resulting in super high contrast ratio. It also gives superior color reproduction thanks to consistent brightness across the screen.

## PowerSensor



PowerSensor is a built-in 'people sensor' that transmits and receives harmless infrared signals to determine if user is present and automatically reduces monitor brightness when user steps away from the desk, cutting energy costs by up to 80 percent and prolonging monitor life



# Specifications

## Picture/Display

- LCD panel type: TFT-LCD
- Backlight type: W-LED system
- Panel Size: 27 inch / 68.6 cm
- Effective viewing area: 596.7 (H) x 335.7 (V)
- Aspect ratio: 16:9
- Optimum resolution: 2560 x 1440 @ 60Hz
- Response time (typical): 5 ms
- SmartResponse (typical): 2 ms (Gray to Gray)
- Brightness: 350 cd/m<sup>2</sup>
- Contrast ratio (typical): 1000:1
- SmartContrast: 20,000,000:1
- Pixel pitch: 0.233 x 0.233 mm
- Viewing angle: 170° (H) / 160° (V), @ C/R > 10
- Picture enhancement: SmartImage
- Display colors: 16.7M
- Scanning Frequency: 30 - 83 kHz (H) / 56 - 76 Hz (V)
- MHL: 1080P @ 60 Hz
- sRGB

## Connectivity

- Signal Input: DVI-D (digital, HDCP), VGA (Analog), DisplayPort, MHL-HDMI (digital, HDCP)
- Sync Input: Separate Sync, Sync on Green
- Audio (In/Out): PC audio-in, Headphone out

## Convenience

- Built-in Speakers: 2 W x 2
- User convenience: SmartImage, Multiview, User, Menu, Power On/Off
- Control software: SmartControl Premium
- OSD Languages: Brazil Portuguese, Czech, Dutch, English, Finnish, French, German, Greek, Hungarian, Italian, Japanese, Korean, Polish, Portuguese, Russian, Simplified Chinese, Spanish, Swedish, Traditional Chinese, Turkish, Ukrainian
- Other convenience: Kensington lock, VESA mount (100x100mm)
- Plug & Play Compatibility: DDC/CI, Mac OS X, sRGB, Windows 8.1 / 8 / 7

## Stand

- Height adjustment: 120 mm
- Pivot: 90 degree
- Swivel: -65/65 degree
- Tilt: -5/20 degree

## Power

- ECO mode: 21 W (typ.)
- On mode: 28.97 W (typ.) (EnergyStar 6.0 test

method)

- Standby mode: <0.5 W
- Off mode: <0.3 W
- Power LED indicator: Operation - White, Standby mode- White (blinking)
- Power supply: 100-240VAC, 50-60Hz, External

## Dimensions

- Product with stand (mm): 639 x 540 x 244 mm
- Product with stand in inch: 25.2 x 21.3 x 9.6 inch
- Product without stand (mm): 639 x 405 x 68 mm
- Product without stand in inch: 25.2 x 15.9 x 2.7 inch
- Packaging in mm (WxHxD): 740 x 490 x 299 mm
- Packaging in inch (WxHxD): 29.1 x 19.3 x 11.8 inch

## Weight

- Product with stand (kg): 6.72 kg
- Product with stand (lb): 14.78 lb
- Product without stand (kg): 4.40 kg
- Product without stand (lb): 9.68 lb
- Product with packaging (kg): 10.60 kg
- Product with packaging (lb): 23.32 lb

## Operating conditions

- Temperature range (operation): 0°C to 40°C °C
- Temperature range (storage): -20°C to 60°C °C
- Relative humidity: 20%-80 %
- Altitude: Operation: +12,000ft (3,658m), Non-operation: +40,000ft (12,192m)
- MTBF (demonstrated): 70,000 hrs (excluded backlight)

## Sustainability

- Environmental and energy: PowerSensor, EnergyStar 6.0, EPEAT Gold\*, RoHS
- Recyclable packaging material: 100 %
- Recycled material: 25%
- Specific Substances: PVC / BFR free housing, Mercury free, Lead free

## Compliance and standards

- Regulatory Approvals: BSMI, CE Mark, cETLus, FCC Class B, SEMKO, TCO 6.0, TUV Ergo, TUV/GS, WEEE, CU-EAC

## Cabinet

- Front bezel: Black
- Rear cover: Black
- Foot: Black
- Finish: Texture



Issue date 2015-02-04

Version: 2.0.2

12 NC: 8670 001 20897  
UPC: 6 09585 24433 7

© 2015 Koninklijke Philips N.V.  
All Rights reserved.

Specifications are subject to change without notice.  
Trademarks are the property of Koninklijke Philips N.V.  
or their respective owners.

[www.philips.com](http://www.philips.com)

\* This Philips display is MHL certified. However, in case your MHL device does not connect or work correctly, check with your MHL device FAQ or vendor directly for direction. The policy of your device manufacturer may require you to purchase their brand specific MHL cable or adapter in order to work  
\* Requires optional MHL certified mobile device and MHL cable. (not included) Please check with your MHL device vendor for compatibility.  
\* Standby/Off energy saving of ErP is not applicable for the MHL charging functionality  
\* For complete list of MHL-enabled products refer to [www.mhlconsortium.org](http://www.mhlconsortium.org)  
\* EPEAT Gold is valid only where Philips registers the product. Please visit [www.epeat.net](http://www.epeat.net) for registration status in your country.  
\* Smart response time is the optimum value from either GtG or GtG (BW) tests.