

BERTL

OUTSTANDING



Panasonic KX-MB2061 Next Generation 8-in-1 Multifunction Communication Center



24 ppm Monochrome

Print • Copy • Scan • Fax • Phone • Answering

Key Buyer Benefits

- Fast print and copy productivity
- High print resolution up to 600 dpi x 600 dpi creates professional presentations, graphics and office documents
- Well designed and intuitive control panel and LCD display for simple navigation
- Ability to scan full-color or black and white originals and share them instantly with Scan-to-E-Mail, Scan-to-FTP, and Scan-to-Shared Network Folders
- 33.6 kbps Super G3 Fax modem allows users to send faxes and scan directly to email; also is great for cataloging paperwork into digital form
- Incoming Fax Web Preview
- Comes standard with a cordless telephone that uses DECT 6.0 for excellent clarity
- Built in Digital Answering Machine and Intercom system
- Flexible desktop and network utilities via Panasonic's embedded web page deliver exceptionally easy to use device monitoring
- Versatile media handling and flexibility, with the ability to print on stock as heavy as 24 lbs bond (90 g/m²) and paper sizes up to 8.5" x 14"
- Maximum paper capacity of 251 sheets
- Environmentally-friendly design offers low power consumption, fast first copy and print output times, and is Energy Star and Restriction of Hazardous Substances (RoHS) Compliant

100% INDEPENDENT ANALYSIS

TABLE OF CONTENTS

Introduction

4

Device Features Summary 4

Print

5

Bandwidth 5
Print Productivity 6
What BERTL Liked 6

Copy

7

Copy Productivity 7
What BERTL Liked 8

Scan/Fax

9

Scan/Fax 9
What BERTL Liked 11

Image Quality

12

Density 12
Resolution 12
Halftones 12
Negative/Positive Lines 13
Negative/Positive Dots 13
What BERTL Liked 13

Ease of Use

14

Programming the Control Panel 14
Print Drivers 14
Routine Maintenance 17
Client Utilities and Device Management 18
What BERTL Liked 22

OFFICE

TABLE OF CONTENTS (cont.)

User Accessibility

23

User Accessibility	23
What BERTL Liked	23

Media Handling

24

Media Handling Checklist	24
Loading Media	24
What BERTL Liked	24

Summing Up

25

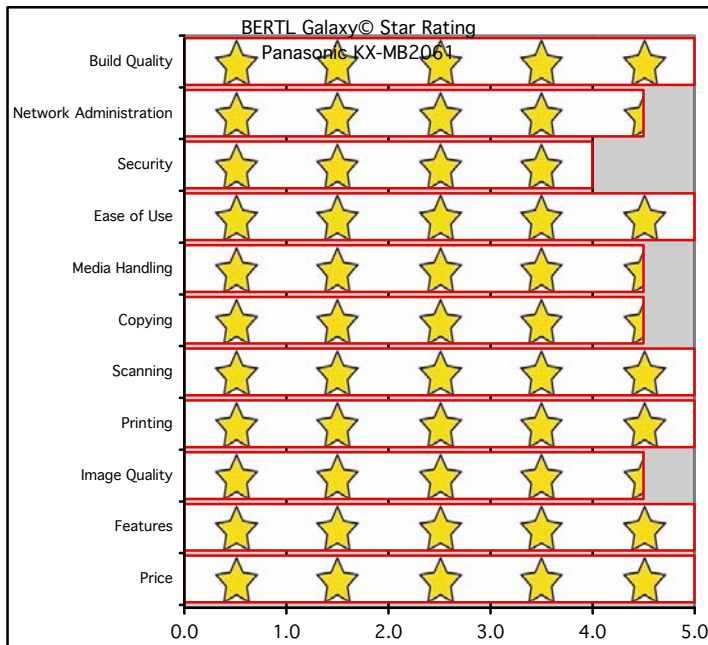
Summary	25
---------	----

About BERTL

26

About BERTL	26
-------------	----

BERTL'S GALAXY® STAR RATING



OFFICE

In December 2010, Panasonic System Networks Company of America introduced the new Panasonic KX-MB2061 Next Generation 8-in-1 Multifunction Communication Center. The KX-MB2061 is designed for the cost conscious business owner looking to purchase multiple pieces of office and communication equipment to support their daily business functions. Not only does this device come standard with the typical print, copy, scan, and fax features, it also has an integrated cordless phone that can be expanded to six units and a digital answering system. The telephone handsets use DECT 6.0 giving users a broad range and clarity with every phone call. The built-in digital answering machine can save up to 30 minutes of voice recordings. Users don't need to pick up a phone to retrieve their messages as the KX-MB2061 digitally converts voice messages to a ".wav" file that can be forwarded to the user's work email allowing them to listen to them on their PC or smartphone.

Amongst the innovative communication features, the KX-MB2061 also demonstrates fast productivity with speeds up to 24 ppm using letter and A4 paper, and has flexible media capabilities with a maximum paper capacity of 251 pages, the ability to print on stock as heavy as 24 lb bond (90 g/m²) and sheets up to 8.5" x 14".

The new Panasonic KX-MB2061 Next Generation 8-in-1 Multifunction Communication Center is designed to be easy on the environment and offers the following features:

- Energy Star and Restriction of Hazardous Substances (RoHS) certified
- Reliable print engine with an easy to open casing makes consumable replacement and the removal of any paper jams exceptionally easy
- High quality 600 x 600 dpi produces smooth and rich business graphics
- Large control panel and several hard keys for easy navigation
- Quick ID Copy mode provides a simple way to copy both sides of an ID card onto a single page
- Network color scanning features include Scan-to-PC, Scan-to-E-mail, Scan-to-Shared Network folder or Scan-to- FTP server
- Fax Forward feature automatically converts faxes to email enabling offices to go paperless and save on paper and toner
- View job queues and check supply levels remotely with Panasonic's embedded web page
- Convenient email alerts notify network administrators when the device needs servicing, such as when the toner is low, to help maintain an uninterrupted workflow

In the following test report, BERTL takes an in-depth look at the Panasonic KX-MB2061, testing and evaluating its productivity, image quality, and ease-of-use.

Panasonic KX-MB2061 Features Summary	
List Price	US \$249.95
Imaging Technology	Monochrome Laser
Standard Functions	Printer, Copier, Scanner, Fax, Answering System, Intercom, Phone, Expandable Cordless Telephone
Optional Functions	None
Mono Print Speed	24 ppm
Mono First Page Out Time	Less than 16 seconds*
Automatic Duplex	No
Network Scanning	Yes
Color Scanning	Yes
NT Authentication	No
LDAP Compatibility	Yes
Hard Disk Overwrite	No

*Less than 11 seconds from Power Save mode

PRINT PRODUCTIVITY

Evaluating print productivity is not as simple as timing copy jobs. The printing process involves several steps and can be affected by a variety of factors along the way.

The document must first be spooled by the print driver into a PCL or PostScript file. The PCL or PostScript file is then sent to the printer where it is raster image processed (RIPped) into image data by the device processor. The image data is then sent to the marking engine and output as printed pages.

It is possible to time and compare these factors through the use of careful preparation, conditioning and testing. Following are charts that show printing performance when tested under controlled conditions.

NETWORK PRINTING SYSTEMS

+ The Panasonic KX-MB2061 rated output speed is 24 ppm in monochrome.

+ The Panasonic KX-MB2061 comes with a Windows-based GDI printer driver which is optimized for maximum printing productivity.

+ The GDI printer driver includes the ability to add watermarks to printed documents, print or create document overlays, merge up to 16 documents on a single sheet of paper, or enlarge your document to a wall size poster.

+ The GDI driver also offers bi-directional communication with its user-selectable interface for all of the Windows-based operating systems.

+ Driver supports the following OS's: Windows 2000, XP (32- and 64-bit), Vista (32- and 64-bit), Mac, and Linux.

+ High print resolutions at 600 x 600 dpi for enhanced image quality.

+ Users can connect to the Panasonic KX-MB2061 via 10/100 Base-TX Ethernet or a high speed USB 2.0.

+ 32 MB of memory capacity for operational and storing memory.

TESTING RESULTS

Network-Bandwidth/Print File Sizes		
	Native File Size	GDI
1-page Digital Photo PDF	4.48 MB	589 KB
4-page Passport Form PDF	0.08 MB	1.34 MB
16-page Magazine in PDF	1.78 MB	4.42 MB
22-page Excel Worksheet	0.12 MB	879 KB
32-page Text-Based PowerPoint	0.23 MB	1.79 MB
32-page Graphic Intensive PowerPoint	4.20 MB	7.30 MB
38-page Form Word Document	0.91 MB	2.65 MB
50-page Text-Based PDF	0.17 MB	4.22 MB

Print Productivity (seconds)		
# of Originals	Mode	GDI
50	Simplex	24.3 ppm

Print productivity is evaluated based on a text based letter sized 50 page PDF file.

Job List	Media Size	Mode	First Page Out Time (seconds)	Total Job Time (seconds)
			GDI	GDI
1-page Digital photo print original	Letter	1:1	15.69	15.69
4-page Passport Form PDF	Letter	1:1	17.80	25.50
16-page Magazine PDF	Letter	1:1	15.33	52.69
22-page Excel Worksheet	Letter	1:1	14.65	67.13
32-page Text-Based PowerPoint	Letter	1:1	13.46	90.35
32-page Graphic Intensive PowerPoint	Letter	1:1	14.96	91.75
38-page Form Word Document	Letter	1:1	14.09	105.63
50-page Text-Based PDF	Letter	1:1	15.62	136.59

WHAT BERTL LIKED

- Tested simplex network-print speed was as fast as 24.3 ppm with the GDI driver, slightly exceeding Panasonic's rated speed of 24 ppm.
- Tested First Page Out-Time was as fast as 13.46 seconds.
- In BERTL's job stream test, the GDI driver completed the test in 5 minutes and 13 seconds, running at 24 ppm, which translates to an efficiency rate of 100%.

WHAT WE WOULD LIKE TO SEE

- BERTL was satisfied with the KX-MB2061's printing capabilities.

COPY PRODUCTIVITY

Advertised speeds are always quoted using the simplest route in-and-out of a device. Of course, users often incorporate different media sizes and types into the document and add other elements that can affect speed. In the chart below, BERTL tests how different media sizes and types affect copying productivity.

To assess copier productivity, BERTL ran copy jobs in order to determine document feeder scanning speed, the effect of the first set out on overall engine speed, and whether specific job attributes affect engine throughput capability. Each job was set up by feeding media from the shortest media route to the shortest available output destination.

COPY FEATURES

- + The Panasonic KX-MB2061 comes standard with a 20-sheet Automatic Document Feeder (ADF).
- + Users can submit jobs that require single or manual duplex copying.
- + Users can make copies that range from 1 to 99 in quantity and copy paper sizes from 5.5" x 8.5" up to 8.5" x 14".
- + Copy Resolution is set at 600 x 600 dpi.
- + The Panasonic KX-MB2061's rated copy output speed is up to 24 cpm.
- + The Panasonic KX-MB2061's Rated First Copy Out Time (FCOT) is as fast as 16 seconds.
- + Users can use the variable zoom to scale from 25% to 400% in 1% increments.
- + Copy Features included with the Panasonic KX-MB2061 incorporate the following: Image Repeat, N in 1 copy, separate N in 1 copy, Quick ID Copy and proof copy.
- + The Quick ID Copy feature copies both sides of an ID or business card prints the image onto a single page in a 2-in-1, 4-in-1, or 8-in-1 format.
- + The Image Repeat feature copies one original and prints it repeatedly on a single page in the 2-in-1, 4-in-1, or 8-in-1 format. This feature is beneficial when copying items like tickets.

TESTING RESULTS

First Copy Out Time Using the Automatic Document Feeder	
	Monochrome Mode
Number of Originals	Time In Seconds
1 Simplex Original	14.84
1 Duplex Original	n/a*

*Automatic duplexing is not available

First Copy Out Time Using the Platen Glass	
	Monochrome Mode
Number of Originals	Time In Seconds
1 Simplex Original	11.97

Copy Job Time			
# of originals	Monochrome Mode	Time In Seconds	CPM
10	1 sided to 1 sided	63.88	9.4
10	1 sided to 2 sided	n/a*	n/a*
10	2 sided to 1 sided	n/a*	n/a*
10	2 sided to 2 sided	n/a*	n/a*

*Automatic duplexing is not available

Simplex Copy Productivity (seconds)		
# of Originals	Mode	Monochrome
1	ADF	10.40 ppm
1	Platen Glass	23.40 ppm

Copy productivity is evaluated based on a single text based letter file copied 50 times.



Above and below: The Panasonic KX-MB2061 platen glass and Automatic Document Feeder (ADF).



DOCUMENT FEEDER PRODUCTIVITY

BERTL also takes the user into account and looks at how document feeder productivity affects the amount of time a user has to wait at the device before they can walk away with their originals.

Document Feed Speed			
# of originals	Monochrome Mode	Time In Seconds	OPM*
11	Simplex Originals	58.94	11.2
6	Duplex Originals	n/a**	n/a**

*Originals per minute

**Automatic duplexing is not available

WHAT BERTL LIKED

- Tested copy First Page Out Time was 11.97 seconds off the platen glass and 14.84 seconds using the Automatic Document Feeder.
- Tested total job time in simplex mode was 23.4 cpm using the platen glass, closely matching Panasonic's rated copy speed of up to 24 cpm. Using the ADF, the copy productivity was 10.4 cpm.
- Faster productivity using the platen glass.
- Fast document feeder productivity.

WHAT WE WOULD LIKE TO SEE

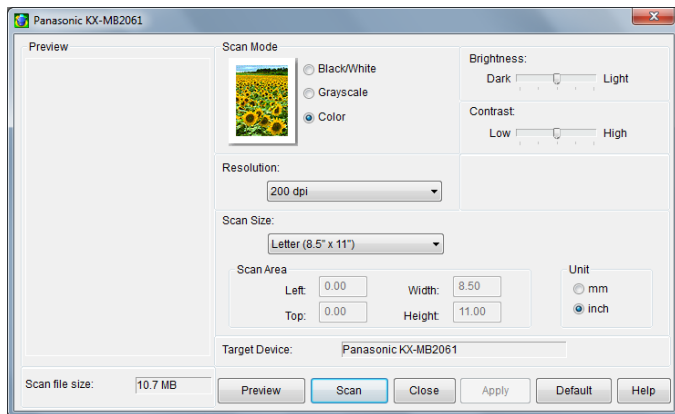
- BERTL was very satisfied with the Panasonic KX-MB2061 platen glass copying capabilities. We would have liked to have seen faster productivity when copying from the ADF as well as having an automatic duplexer.

SCANNING FEATURES

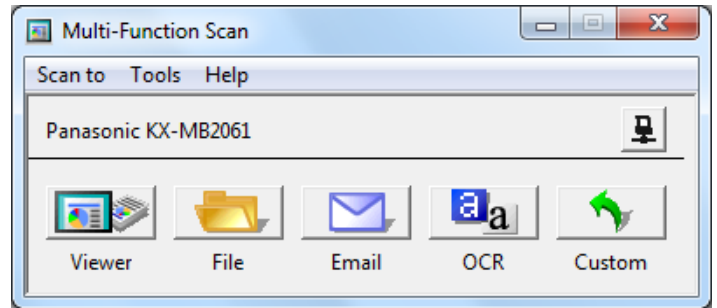
The Panasonic KX-MB2061 has the ability to scan documents directly to a PC, e-mail, shared network folder, or FTP server, using the built-in 20 sheet Automatic Document Feeder or the flatbed scanner. Scanned documents can be saved as a PDF, JPG, TIFF, or BMP file. The KX-MB2061 is also capable of scanning documents in full color with resolutions up to 9600 x 9600 dpi (Interpolated).

SCANNER SPECIFICATIONS

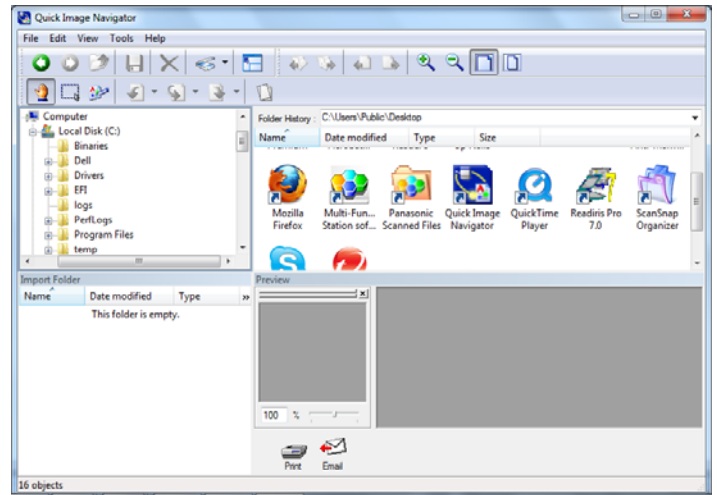
Color Scanning	48 bits, 24 bits
Monochrome Scanning	16 bits, 8 bits
Scanning Resolution	Optical: 600 x 1200 dpi Interpolated: 9600 x 9600 dpi
Scanner Driver	TWAIN / WIA
Scan to Functions	Scan to FTP Server, Scan to Shared Network Folder, Scan to Email



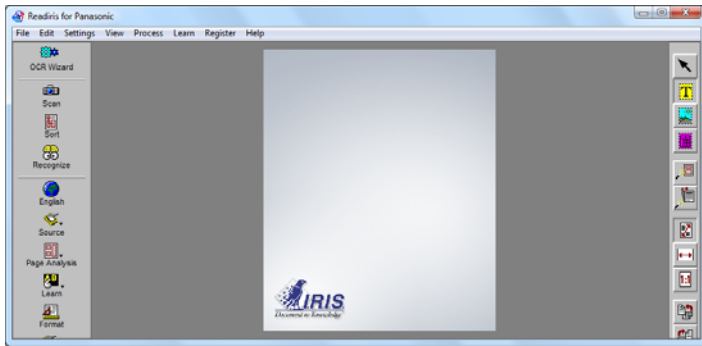
The Panasonic KX-MB2061 TWAIN driver provides users with the ability to scan hard copy originals into most software applications such as Adobe Acrobat, Photoshop, MS Word, and Excel.



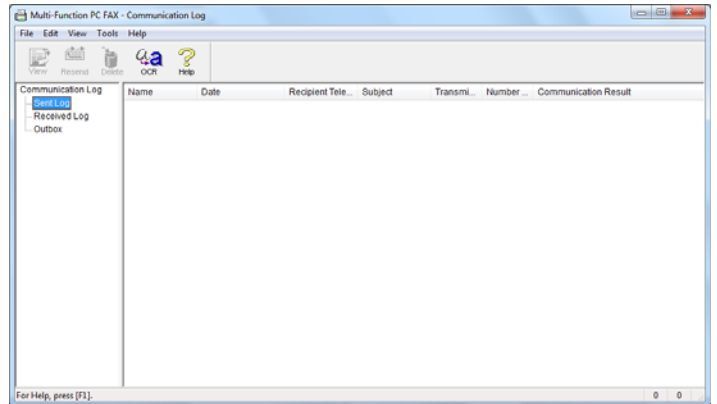
The Multi-Function Scan feature enables users to create an image file simply by scanning a document set in the device to a TIFF, JPEG, BMP and PDF format. The scanned document is then launched to the specified application.



Quick Image Navigator is an application software for importing images from a network scanner to the user's computer. It can also be used for managing loaded images and electronic documents created by various applications. In addition to basic functions based on Windows Explorer, users can display image files in a list as thumbnails and edit the images easily using a mouse. This allows users to manage data with different formats in an integrated fashion and manage documents efficiently.



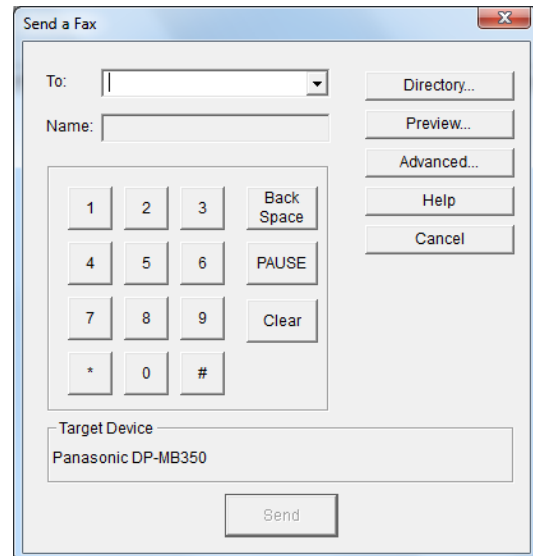
Readiris OCR software suite is a text recognition software that allows users to easily convert digital documents into text editable documents. Users simply scan any document to the Panasonic KX-MB2061, then the Readiris software will recognize it, and within seconds users have a fully editable copy of their paper document, which can be edited in many word processor and spreadsheet applications. Readiris also works with scanned paper documents, PDF files and image files.



Above and below: The Panasonic Fax Driver provides PC faxing, so that users can fax files directly from their computer.

SUPER G3 FAX FEATURES

The Panasonic KX-MB2061 comes standard with a high speed fax designed for fast and efficient document transmissions. The PC fax feature allows users to fax documents directly from a PC without having to print them out. The Fax Preview function stores all incoming fax documents in the device's memory and makes them viewable from a standard internet browser.



FAX SPECIFICATIONS	
Modem Speed (Kbps)	33.6 Kbps Super G3
Fax/Tel Switch	Yes
One Touch Dial	6 (3 x 2) stations
Phone Book	100 + 6 stations
Auto Redial	Yes
Memory Transmission	150 pages
Out-of-Paper Reception	110 pages
Broadcasting	20 x 2 stations
Fax Features	Manual Broadcasting, Auto Reduction, ECM, Dual Access, PC FAX, Web FAX Preview, Quick Scan

WHAT BERTL LIKED

- Versatile scan to methods include PC, E-mail, Shared Network folder or FTP server.
- Scanned documents can be saved as a PDF, JPG, TIFF, or BMP for optimum compatibility.
- Panasonic TWAIN driver offers users an array of scanning features to improve productivity.
- Comes standard with Panasonic Quick Image Navigator software and Readiris OCR software which allows users to manage and convert their digital documents.
- The optional Super G3 Fax unit transforms the unit into a powerful workgroup fax.
- Advanced fax features include Manual Broadcasting, Auto Reduction, ECM, Dual Access, PC Fax, Web Fax Preview, and Quick Scan.
- Users can send and receive faxes at their networked computer, saving time and paper costs.
- Incoming Fax Web Preview function enables users to read the faxes they receive on a PC first, and then decide whether they want to print them, save them to the PC, or delete them.

WHAT WE WOULD LIKE TO SEE

- BERTL was very satisfied with both the Panasonic KX-MB2061 network-scanning and fax capabilities.

IMAGE QUALITY

Negative/Positive Lines*				
Line Width (points)	Negative		Positive	
	Vertical	Horizontal	Vertical	Horizontal
1	√	√	√	√
2	√	√	√	√
3	√	√	√	√
4	√	√	√	√
5	√	√	√	√
6	√	√	√	√

A "√" mark indicates the device was able to print the line width correctly. *Chart cells containing an "x" indicate that the printer was not able to print the line width correctly. Overall, the fewer "x's," the better the image quality. If no cells are marked with an "x," then the device was able to print all line widths correctly.

Negative/Positive Dots*	
Line Width (points)	% of Dots Printed
1 pixel Black	100
1 pixel Black Neg	100
2x2 pixel Black	100
2x2 pixel Black Neg	100
Checkerboard apparent?	No

*On a scale of 0 – 100%. The higher the percentage, the better.

WHAT BERTL LIKED

- High-Quality 600 dpi x 600 dpi printing provides clear, crisp images, even on jobs with fine detail.
- Great print and copy density.
- Excellent resolution in both copy and printer modes.
- Great halftone reproduction in printer and copier modes when printing all grayscale shades.
- Output displayed great line control, printing all of BERTL's negative/positive test lines correctly.
- Text was bold, crisp, and cleanly formed.
- Gradations were smooth in all grayscale shades.
- No saturation was noticed in any of BERTL's test files.

WHAT BERTL WOULD LIKE TO SEE

- BERTL was very satisfied with the image quality produced by the Panasonic KX-MB2061. We would have liked to have seen less banding on some of BERTL's test files.

PROGRAMMING THE CONTROL PANEL

A control panel's ease of use—or lack thereof—can often have a significant effect on user productivity. The harder it is to select frequently used options such as duplexing, document finishing, etc., the more time the user has to spend programming the device and the less productive they are. The Panasonic KX-MB2061's control panel incorporates a two line, 16 character LCD screen, several hard keys, and a scroll wheel making operation simple. On the left side of the control panel users can select different functions such as Scan, Copy, and Fax. The Voice to PC works like an answering machine and allows users to play back voice messages as well as record messages and delete them.



The Panasonic KX-MB2061 comes standard with one cordless handset which is expandable up to 6 handsets that can be registered to a single base unit. The cordless handsets give users the ability to, for an example; have an intercom call with another cordless handset while a third cordless handset is on an outside call.

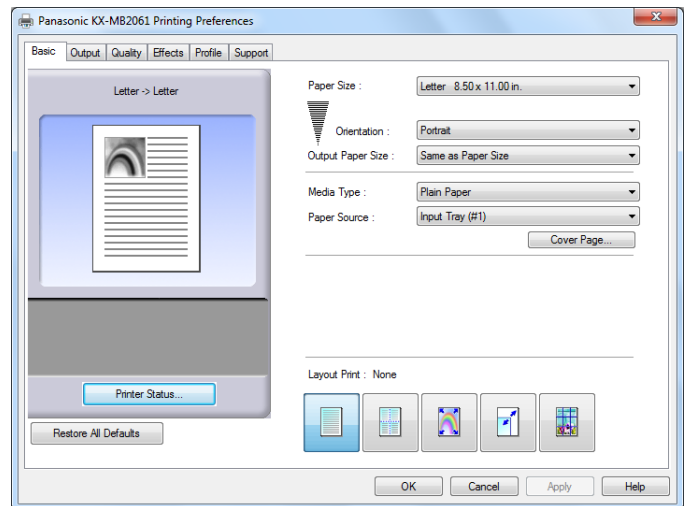
The KX-MB2061 supports intercom calls that can be made between a cordless handset and the base unit. Users can page all cordless handsets at once from the base unit if needed. Also contributing to this versatile device is the digital answering system that can record up 30 minutes of voice messages and has the ability to convert the messages to text and send them to the user's email or smartphones (BlackBerry, iPhone, etc).

PRINT DRIVERS

As with control panels and touch screens, print driver design can vary enormously from manufacturer-to-manufacturer. Panasonic has made it an effortless procedure with their design of the GDI driver. The print driver user interface is virtually the same compared to other Panasonic devices, which will make it especially easy for users to switch between devices. The GDI driver also offers a bi-directional communication so users can see the status of the printer at all times.

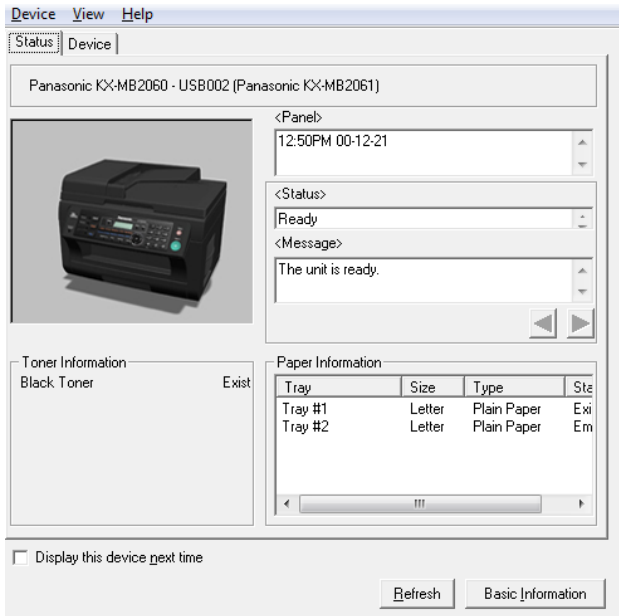
Print Driver Checklist	
Do print drivers have identical user interfaces?	Yes
Are print drivers interfaces identical to other models from this vendor?	Yes
Bi-directional communication within print driver?	Yes
Auto device configuration from within print driver?	Yes
Does print driver installation require rebooting of the workstation?	Yes
Are print driver deployment processes included?	Yes
Are print driver deployment guidelines and procedures included?	Yes

GDI PRINT DRIVER

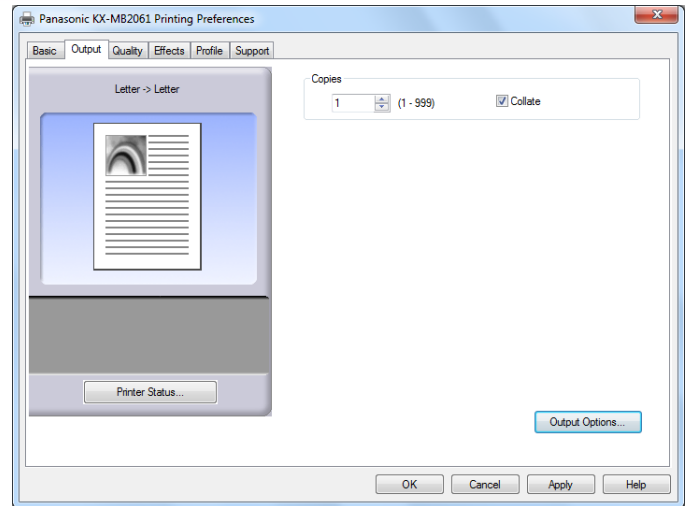
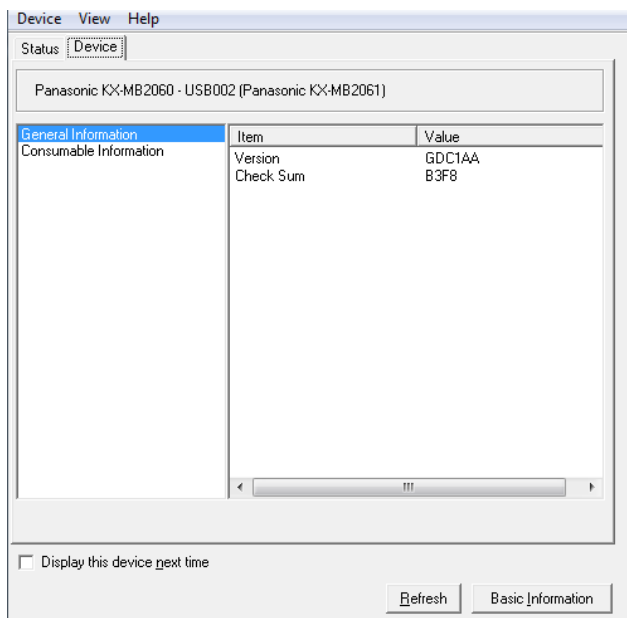


The Basic tab enables users to specify paper sizes, page orientation, paper source, page layout, etc. The Layout print option gives the user the ability to modify multipage printing (N-up), zoom, and create posters.

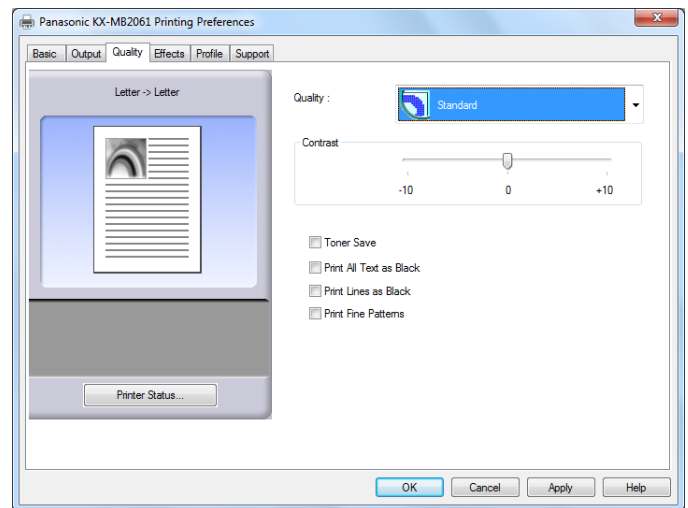
Each tab conveniently provides a graphic display on the left side of the dialog screen illustrating each of the functions selected by the user.



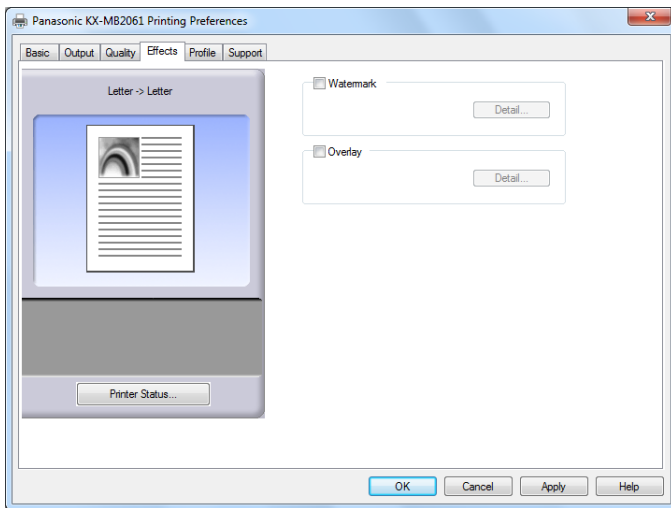
Above and below: When a user selects the printer status button the Device Monitor screen pops up which is a bi-directional communication feature that displays the printer's general information including total page counters, consumables, and fax and scan information as well as network IP addresses and device configurations.



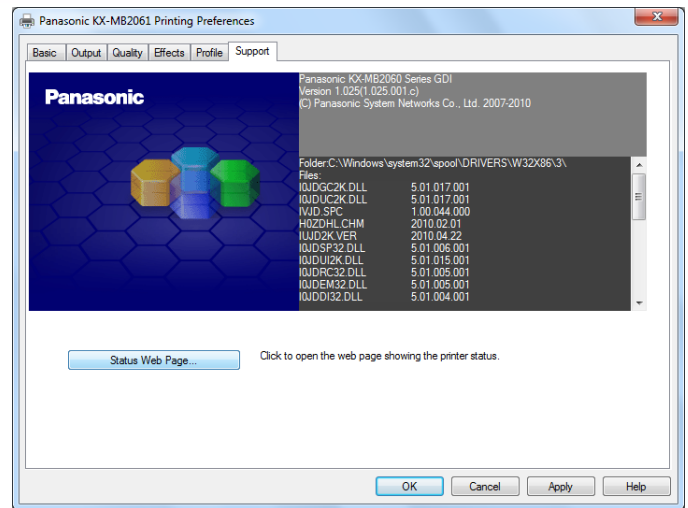
The Output tab offers options such as number of copies, collate and the ability to check the printer status prior to printing.



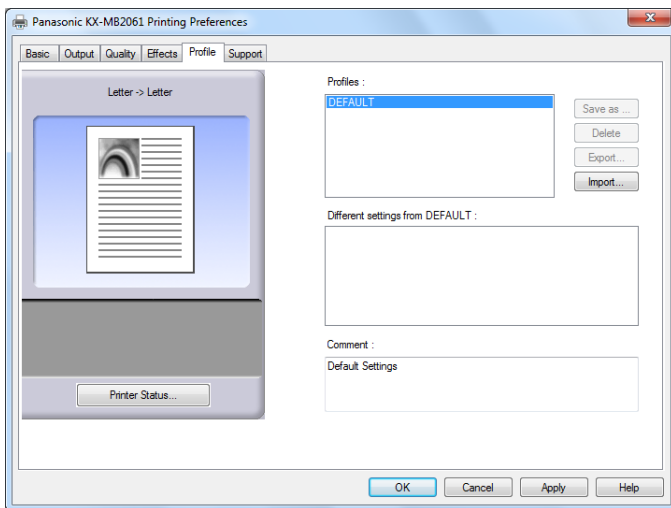
The Quality tab allows users to choose different resolutions and halftones. Users can also adjust the contrast and select the toner save option, reducing the cost per page.



The Effects tab provides users with the ability to create and edit watermarks such as Draft, Confidential, and Copy to be printed as backgrounds on documents. Users can also print stored overlays consisting of images and/or text on documents.



The Support tab provides users with convenient links for downloading print drivers and contacting technical support.



On the Profile tab users can name and save a collection of frequently used print settings. For example, an enterprise might specify whenever a user prints a letter to a client that the letter must have 600 dpi, and overlay with the company logo. This provides users with some efficiencies when performing repetitive common tasks.

ROUTINE MAINTENANCE

Routine maintenance items are device parts that have a limited life and require periodic replacement. Panasonic has a couple items that can be replaced by users which include the toner and drum cartridges. The Panasonic KX-MB2061 also incorporates long life components and consumables which include toner yields up to 2,000 pages and drum cartridge yields up to 6,000 pages.



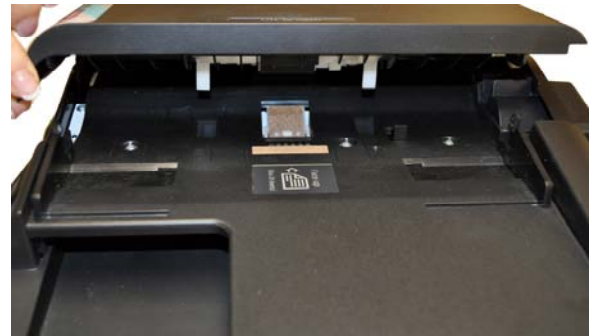
Maintenance Checklist	
Load ink/toner while running?	No
Requires rear access to maintenance items?	Yes
Requires side access to maintenance items such as toner cartridge?	No
All-in-one imaging units?	No
User-disposable waste item(s)?	Yes

REPLACING TONER



Above and next column: In order to replace the KX-MB2061's toner, the user must first open the top panel by simply lifting the door up. Once the door is open, the user then must lift up the green locks and pull the toner out for replacement.

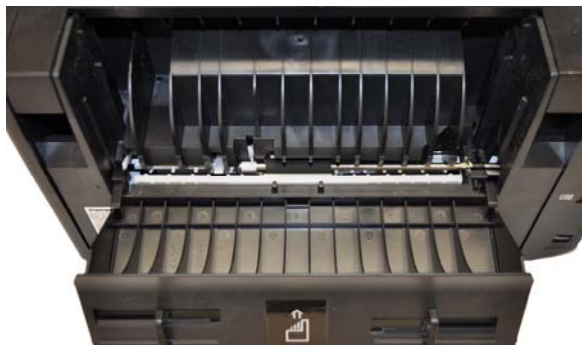
MISFEED ACCESS



The Automatic Document Feeder misfeed access area is accessed by lifting up this cover.



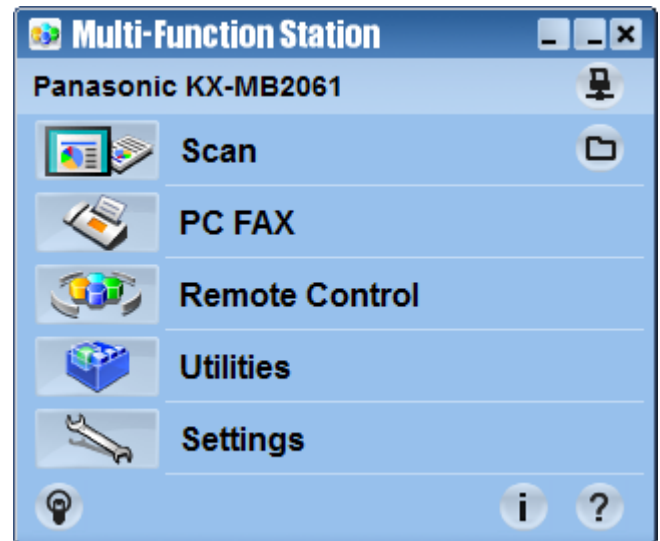
To access the front misfeed area, the user must first open the top panel. Once open, the user can clear any misfeeds.



To access the rear misfeed area, the user must open the back panel. Once open, the user can clear any misfeeds.

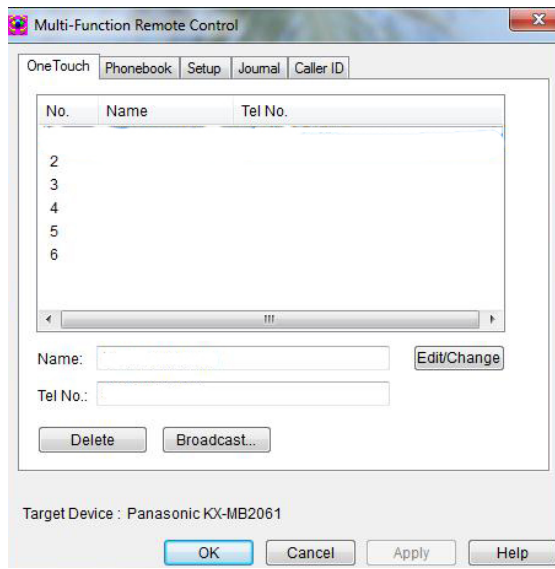
CLIENT UTILITIES AND DEVICE MANAGEMENT

In order to take the best and most efficient advantage of a device and its capabilities, as well as ensure maximum uptime, clients need an efficient way to access and monitor the device. Panasonic offers many features and options to help productivity for all users.

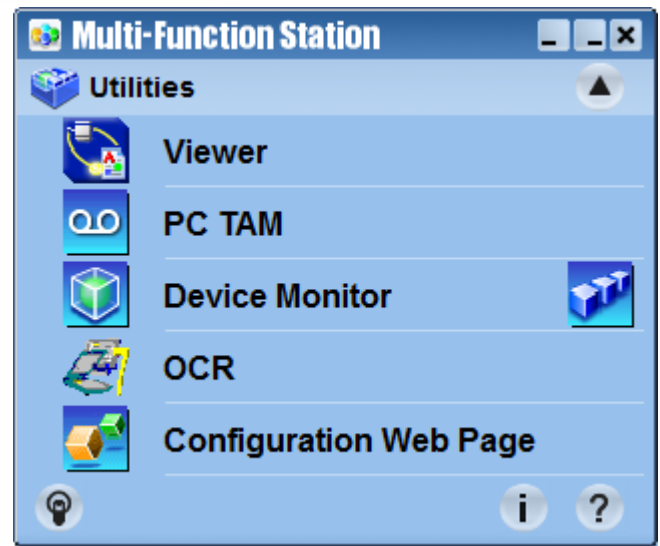


The Panasonic Multi-Function Station utilizes document management software that enables the device to carry out the following functions:

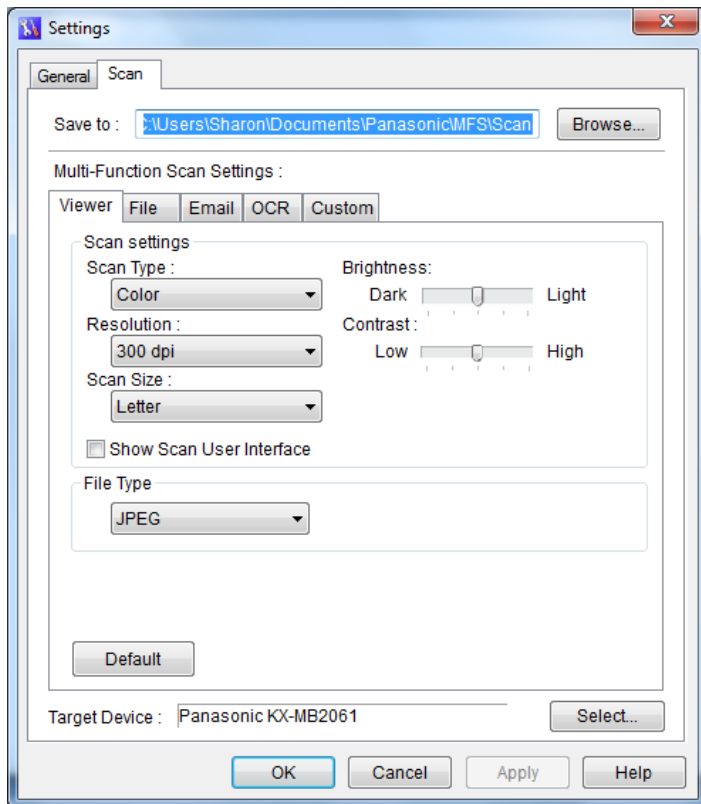
- Print on plain paper, transparencies, labels and envelopes
- Preview documents and change printer settings before printing with the Easy Print Utility
- Scan documents and convert an image into searchable text with Readiris OCR software
- Scanning from other applications for Microsoft® Windows® that support TWAIN scanning
- Store, edit or erase entries in One Touch dial, Broadcast and Directory using your computer
- Program the Setup features using a computer
- Send and receive fax documents using a computer
- Play back the voice messages using your computer



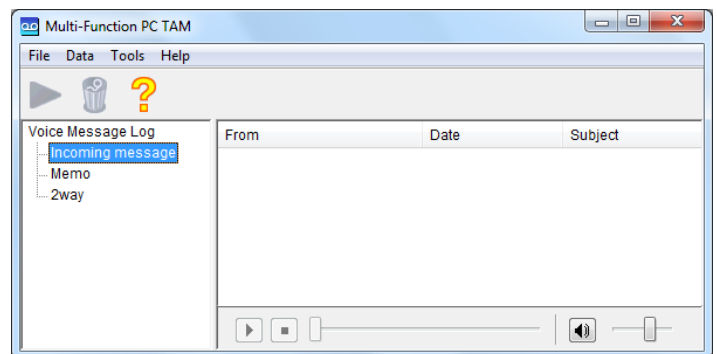
Using the Remote Control feature users can easily operate the following functions from their computers: save Caller ID lists, view items in the journal report and store, edit or erase items in directories or broadcast transmissions.



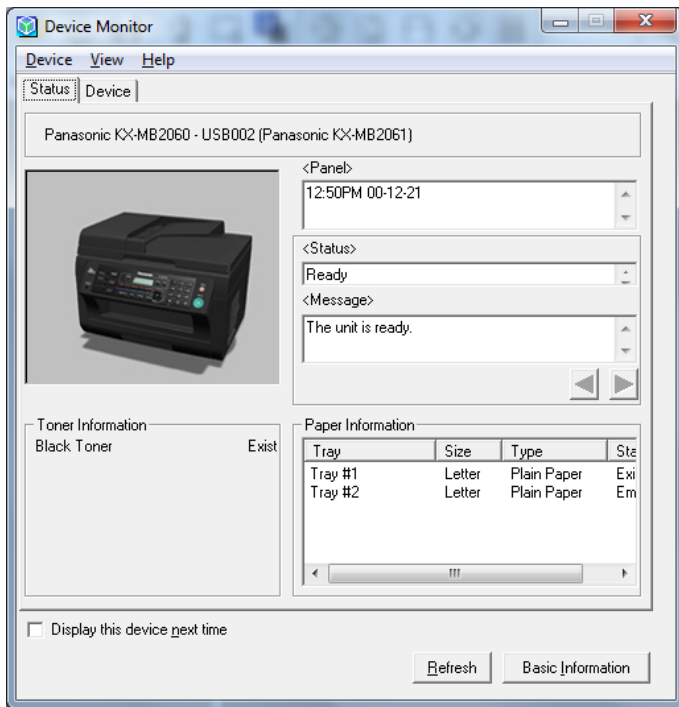
Within the Multi-Function Station users can choose from the following utilities: Viewer, PC TAM, Device Monitor, OCR, and Configuration Web Page.



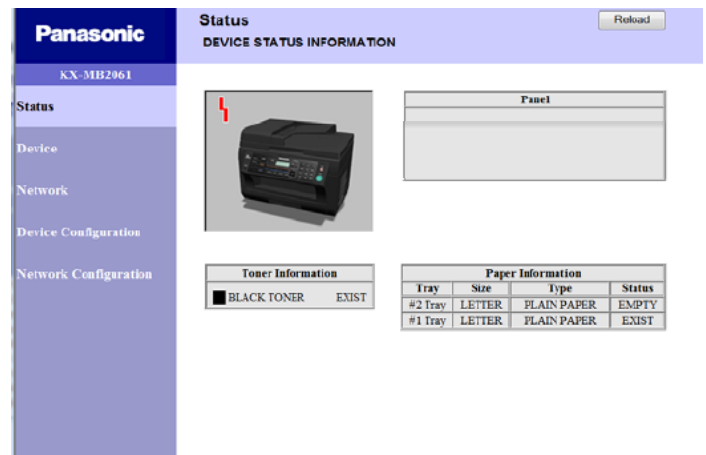
Within the settings screen in the Multi-Function Station, the TWAIN Compliant Scanner Driver enables users to scan to applications such as Word, Excel, and Adobe Acrobat.



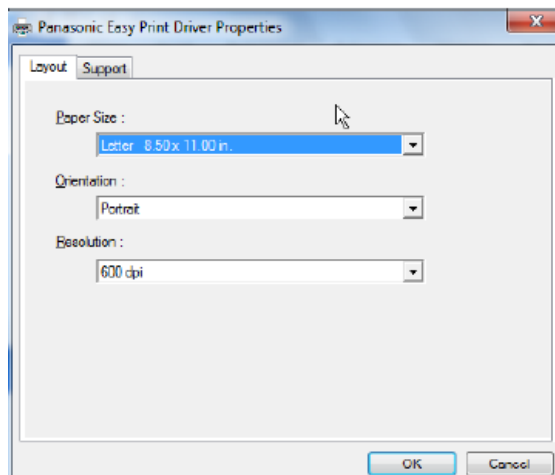
The PC TAM utility enables users to manage the records of their voice messages as well as play back any messages.



The Device Monitor is a utility with a bi-directional communication that allows users to check the status of the device displays toner and paper levels.



The Panasonic KX-MB2061's embedded web page enables users to check device status, Network IP information, System identification, as well as the status of paper sources and toner status.



Above and next column: The Panasonic Easy Print Utility is an alternative way of printing without using the printer driver. The Easy Print Utility allows users to do to the following:

- Prevent unnecessary printing by checking the document preview on PC screen
- Merge and print files created with different applications
- Add headers, footers or watermarks before printing
- Save a file in PDF format

Administrators can configure the system so that specified users are automatically sent an e-mail message indicating that a specified status condition has occurred, such as the toner is low.

The Basic Feature page provides users with detailed information associated with the device's current settings, options, media input, and document output settings.

The Network Configuration page provides users with very detailed network protocol information such as the IP Filter and, DHCP and DNS settings, enabling administrators to manage, monitor and maintain the Panasonic KX-MB2061.

WHAT BERTL LIKED

- The control panel's hard keys are large, well-organized, and clearly labeled, while the LCD screen features large text for easy viewing, as well as a simple design for easy navigation.
- The built-in DECT 6.0 Phone System gives businesses exceptionally clear sound and the ability to add up to six additional cordless handsets.
- The Remote Voice and Fax Management System utilize the power of the Internet so users can have their voice messages and inbound fax documents automatically forwarded to their email. Also, the ability to convert received voice messages into a standard .wav file and fax documents into PDF files, both of which are accessible on most Smartphones.
- Panasonic's embedded web page is a very well designed and capable web-based utility that enables network administrators to manage the KX-MB2061 remotely via the network. This utility makes it very easy to monitor the device as well as supplies directly from a client workstation. BERTL liked the ability to set up automatic e-mail alerts and maintenance notifications.
- Panasonic's MultiFunction Station is a document management software suite that enables users to print, scan, fax, and monitor the device from their desktops.
- The GDI print driver is very easy to use, logically organized, and provides bi-directional communication, so users can quickly check device and consumables' status.
- The Easy Print Utility is a useful function allowing users to merge documents together into a single document minimizing users having to read multiple documents.
- The Remote Control feature can be used to adjust system settings and program the system address book from their PC's.
- Panasonic Network Device Monitor is a utility that displays a variety of information about connected devices such as network settings, consumables levels and general device information.
- BERTL found replacing the toner cartridge to be easy.
- BERTL found it easy to access and remove any misfeeds.

WHAT WE WOULD LIKE TO SEE

- BERTL found that the Panasonic KX-MB2061 was very easy to use and maintain on a daily basis.

USER ACCESSIBILITY

In the United States, Section 508 legislation prohibits government agencies from purchasing devices that are not accessible to those with physical impairments. For this reason, and the corporate world's increased focus on providing a better work environment for all, many MFP manufacturers increasingly are providing more user-friendly features for physically-impaired users.

Common design features include tilting control panels, which give wheelchair-bound users a better view of the screen, and larger display options for those with impaired vision. Voice navigation and Braille also are becoming increasingly popular. Easy access to the paper path for misfeed removal and front access to toner supplies also make a device more user-friendly.

The Panasonic KX-MB2061 has exceptional accessibility features that are designed for convenient accommodation for everyone in the workplace. These systems incorporate user-friendly features such as a simple control panel with hard keys, and easy-pull paper drawer, all which are in compliance with Section 508 requirements.

USER ACCESSIBILITY PAPER JAM REMOVAL

Paper jam removal is a simple process for those in a wheelchair. There are no hidden jam points and all access areas are at a comfortable height and angle for access from the front of the device. Adding paper and replacing toner is all a simple process from a wheelchair as well. Toner doors open easily during the toner replacement process and are designed to be lighter and easy to replace, so most users can do it with one hand

WHAT BERTL LIKED

- The Panasonic KX-MB2061 has exceptional accessibility features that are designed for convenient accommodation for everyone in the workplace. These systems incorporate user friendly features that make them easier to operate and align with Section 508 requirements.
- BERTL liked that users can easily replace the Panasonic KX-MB2061's consumables.
- Easy to adjust and fill all paper cassette as well access misfeed areas (although some people may have a problem accessing the rear of the device to use the bypass tray).

WHAT WE WOULD LIKE TO SEE

- BERTL was satisfied with the accessibility features of the Panasonic KX-MB2061.

MEDIA INPUT

The Panasonic KX-MB2061 comes standard with a 250-sheet paper cassette and a single sheet bypass tray. A wide range of paper sizes and weights are supported which include sizes up to 8.5 x 14 inches via the bypass tray and paper weights up to 24 lb bond (90 g/m²).



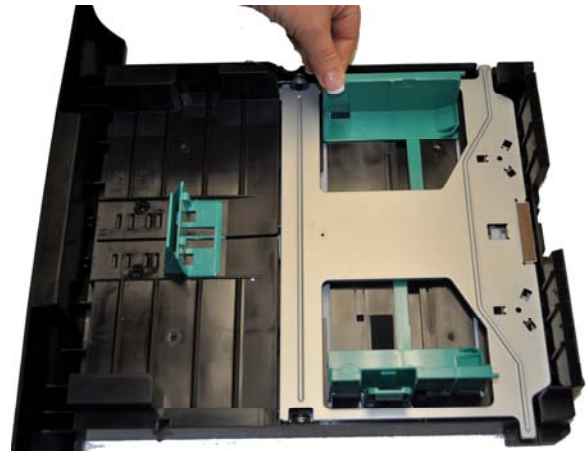
The Panasonic KX-MB2061 shown here is equipped with the standard 250-sheet drawer and a single sheet bypass tray located in the back.

LOADING MEDIA

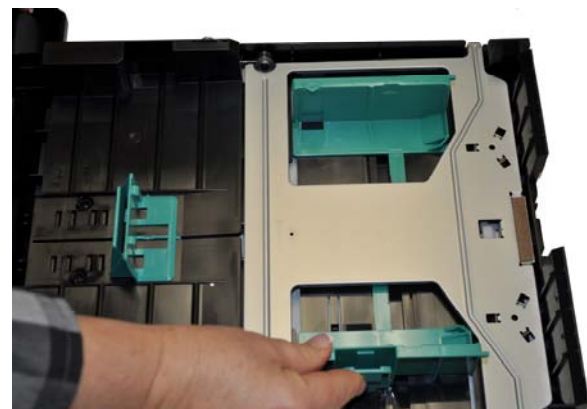
Media Loading Checklist	
Drop-in loading of a full ream of paper?	No
Spring-loaded ramps in paper trays?	Yes
Geared media size side guides?	No
Captured rear media guide?	No
Automatic paper size detection?	No



The single sheet bypass tray is located in the back of the device and can be adjusted by sliding these levers into place.



Above and below: In order to adjust the 250-sheet paper drawer to accommodate different paper sizes, the user squeezes and slides these green guides into place. BERTL found it easy to adjust the paper drawers.



WHAT BERTL LIKED

- The single sheet bypass tray is easily adjusted to accommodate different paper sizes including envelopes.
- Paper cassette capacity up to 250 sheets for longer uninterrupted operation.
- Easy to adjust and fill paper cassette and bypass tray.
- Versatile media handling and flexibility, with the ability to print on stock as heavy as 24 lb bond (90 g/m²) and paper sizes up to 8.5"x 14".

WHAT WE WOULD LIKE TO SEE

- BERTL was satisfied with the Panasonic KX-MB2061's paper-handling capabilities. We would have liked to have seen the ability to print on heavy stock as well as having an automatic duplexer.

Panasonic is redefining the typical MFP by adding the convenience of a cordless handset and digital answering machine to the KX-MB2061. Expandable up to six handsets, the KX-MB2061 can be used as an office phone system as well as a printer, copier, fax machine and scanner. BERTL analysts were extremely impressed with the Panasonic KX-MB2061 for its above average performance speeds, very good image quality, superb ease of use and innovative communication features. During BERTL's extensive testing of the KX-MB2061, this office-monochrome, laser-based 8-in-1 multifunction communications center for small to mid-sized workgroups performed exceptionally well. BERTL observed the following when testing the Panasonic KX-MB2061:

- Tested simplex network-print speed was as fast as 24.3 ppm with the GDI driver, slightly exceeding Panasonic's rated speed of 24 ppm.
- Tested First Page Out-Time was as fast as 13.46 seconds.
- In BERTL's job stream test, the GDI driver completed the stream job test in 5 minutes and 13 seconds, which translates to running at 24 ppm and an efficiency rate of 100%.
- Tested total copying job time in simplex mode was 23.4 cpm using the platen glass, closely matching Panasonic's rated copy speed of up to 24 ppm. Using the ADF, the speed was 10.4 cpm.
- Well organized control panel and LCD display makes it easy to program jobs in seconds.
- Comes standard with a cordless telephone that uses DECT 6.0 technology for excellent clarity and a built-in Digital Answering Machine and Intercom system that converts voicemails to .wav files that can be sent to email or many smartphones.
- Quick ID Copy mode provides a simple way to copy both sides of an ID card onto a single page.
- Various Scan-to functions include: Scan-to-Email for rapid delivery as well as Scan-to-FTP, Scan-to-PC, Scan-to-Shared Network Folder and TWAIN Scanning.
- Comes standard with Panasonic Quick Image Navigator software and Readiris OCR software which allows users to manage and convert their digital documents into text editable documents or searchable PDF's.
- The Super G3 Fax function transforms the unit into a powerful workgroup fax while the Fax Web Preview feature reduces paper and toner consumption by allowing users to preview documents via the Web.
- BERTL analysts were very impressed with the KX-MB2061 document management capabilities. Panasonic's Multifunction Station Software offers users a convenient way to manage, capture content and distribute documents straight from any users PC's.
- Also contributing to the Panasonic KX-MB2061's overall productivity is Panasonic's Embedded Web Server, which provides detailed device and consumable status, and offers network administrators the ability to configure and manage both the network and device settings.
- Convenient email alerts notify network administrators of common service issues, such as low toner levels, to help maintain an uninterrupted workflow.
- The Panasonic KX-MB2061 was exceptionally easy to use and maintain, from the large and easy-to-navigate control panel to using the GDI print driver and device management software. Ease of maintenance is very good, with a top-loading toner cartridge that even novice users will find easy to replace, and simple misfeed access and paper replacement.
- Versatile media handling and flexibility, with the ability to print on stock as heavy as 24 lb bond (90 g/m²) and paper sizes up to 8.5" x 14".
- Ease of maintenance is effortless, with top-loading toner, easy misfeed access, and paper tray loading.
- The KX-MB2061 has exceptional accessibility features that are designed for convenient accessibility for everyone in the workplace, these systems incorporate user friendly features that make them easier to operate and comply with Section 508 requirements.
- The Panasonic KX-MB2061 has superior energy saving features, which include fast warm-up, fast first copy out and print times, low power consumption, low emissions, and is Energy Star certified and Restriction of Hazardous Substances (RoHS) compliant.

Considering Panasonic's KX-MB2061's exceptional overall performance in testing, great ease of use, and very good office-monochrome image quality, BERTL awards the Panasonic KX-MB2061's its Four and One-Half-Star *Outstanding* rating and highly recommends the device for small to mid-size offices and workgroups that require a reliable and fully functional Segment 2 (21-30 ppm) monochrome multifunction communication center.

About BERTL

The success of an organization depends on its ability to manage its information and assets. An effective workflow process requires the complex integration of information, devices, software, and people.

IT managers, office managers, and other knowledge-management professionals need to know what digital imaging devices would best serve their specialized workflow processes.

BERTL's services are designed around this real-world framework, delivering business consumers the independent analysis and insight needed to make critical decisions about digital imaging's role in their organization.

Independent Analysis and Insight

BERTL's reports, comparative data, and strategic guides look at digital imaging through the eyes of the business user. The research examines not only the technical features, but also vertical market applications, and business benefits. The impact on worker productivity is a primary concern.

BERTL is 100 percent independent. It receives no funding from manufacturers and all product evaluations and reports are published at BERTL's own expense for its subscribers. Business users worldwide trust BERTL for objective, unbiased analysis of digital imaging systems.

BERTL Services

Reports and Star Ratings

BERTL analysts provide detailed reports on the technical and practical benefits of thousands of color and monochrome workgroup, office, graphic arts, and production devices.

Product Specifications

DataCheck Gen II provides the most current competitive data on printers, copiers, MFPs, fax devices, wide format printers, scanners, and more.

News, Interviews, and Analysis

The *iTchat* online magazine provides insight into the dynamics and trends of the digital imaging marketplace through interviews, feature articles, and software reviews.

BERTL Awards

BERTL analysts recognize the leading devices and software solutions in the annual BERTL's Best awards. BERTL also honors the performance of manufacturers in the annual Readers' Choice selections.

Contact BERTL

BERTL Inc.
363 Route 46 West, Suite 100
Fairfield, NJ 07004
Phone: 1-973-882-0200
Fax: 1-973-882-0201
Email: info@bertl.com
www.BERTL.com