

# GS108T Hardware Installation Guide

**NETGEAR®**

NETGEAR, Inc.  
350 East Plumeria Drive  
San Jose, California 95134 USA

202-10562-01  
January 2010  
v1.0

## Trademarks

NETGEAR, the NETGEAR logo, and Auto Uplink are trademarks or registered trademarks of NETGEAR, Inc. Microsoft, Windows, and Windows NT are registered trademarks of Microsoft Corporation. Other brand and product names are registered trademarks or trademarks of their respective holders. Portions of this document are copyright Intoto, Inc.

## Statement of Conditions

In the interest of improving internal design, operational function, and/or reliability, NETGEAR reserves the right to make changes to the products described in this document without notice.

NETGEAR does not assume any liability that may occur due to the use or application of the product(s) or circuit layout(s) described herein.

## Certificate of the Manufacturer/Importer

It is hereby certified that the GS108T Smart Switch has been suppressed in accordance with the conditions set out in the BMPT-AmtsblVfg 243/1991 and Vfg 46/1992. The operation of some equipment (for example, test transmitters) in accordance with the regulations may, however, be subject to certain restrictions. Please refer to the notes in the operating instructions.

The Federal Office for Telecommunications Approvals has been notified of the placing of this equipment on the market and has been granted the right to test the series for compliance with the regulations.

## Product and Publication Details

<b>Model Number:</b>	GS108T
<b>Publication Date:</b>	January 2010
<b>Product Family:</b>	Smart Switch
<b>Product Name:</b>	GS108T Smart Switch
<b>Home or Business Product:</b>	Business
<b>Language:</b>	English
<b>Publication Part Number:</b>	202-10562-01
<b>Publication Version Number:</b>	1.0

---

# Contents

## GS108T Hardware Installation Guide

### About This Manual

Conventions, Formats and Scope .....	v
How to Print this Manual .....	vi
Revision History .....	vii

### Chapter 1

#### Introduction

Overview .....	1-1
Features .....	1-2
Green Features .....	1-3
Package Contents .....	1-3

### Chapter 2

#### Physical Description

GS108T Front and Back Panel Configuration .....	2-1
LED Designations .....	2-2
Port LEDs .....	2-2
System LEDs .....	2-3
Device Hardware Interfaces .....	2-3
RJ-45 Ports .....	2-3
Powered-Device Port .....	2-3
Reset Button .....	2-4
Factory Defaults Button .....	2-4

### Chapter 3

#### Applications

Desktop Switching .....	3-1
-------------------------	-----

---

## **Chapter 4 Installation**

Step 1: Preparing the Site .....	4-1
Step 2: Installing the Switch .....	4-2
Installing the Switch on a Flat Surface .....	4-2
Wall Mounting the Switch .....	4-2
Step 3: Checking the Installation .....	4-3
Step 4: Connecting Devices to the Switch .....	4-3
Step 5: Applying Power .....	4-4
Using an AC Power Source .....	4-4
Using a PoE Power Source .....	4-4
Step 6: Managing the Switch using a Web Browser or the PC Utility .....	4-5

## **Appendix A Troubleshooting**

Troubleshooting Chart .....	A-1
Additional Troubleshooting Suggestions .....	A-2
Network Adapter Cards .....	A-2
Configuration .....	A-2
Switch Integrity .....	A-2
Auto-Negotiation .....	A-3

## **Appendix B Technical Specifications**

### **Index**

# About This Manual

The *NETGEAR® ProSafe™ GS108T Hardware Installation Guide* describes how to install and power on the GS108T Smart Switch. The information in this manual is intended for readers with intermediate computer and Internet skills.

## Conventions, Formats and Scope

---


The conventions, formats, and scope of this manual are described in the following paragraphs:


- **Typographical Conventions.** This manual uses the following typographical conventions:

<i>Italic</i>	Emphasis, books, CDs, file and server names, extensions
<b>Bold</b>	User input, IP addresses, GUI screen text
Fixed	Command prompt, CLI text, code
<i>italic</i>	URL links

- **Formats.** This manual uses the following formats to highlight special messages:

	<b>Note:</b> This format is used to highlight information of importance or special interest.
---	--

	<b>Tip:</b> This format is used to highlight a procedure that will save time or resources.
---	--

	<b>Warning:</b> Ignoring this type of note may result in a malfunction or damage to the equipment.
---	--



**Danger:** This is a safety warning. Failure to take heed of this notice may result in personal injury or death.

- **Scope.** This manual is written for the GS108T Smart Switch according to these specifications:

Product Version	GS108T Smart Switch
Manual Publication Date	January 2010



**Note:** Product updates are available on the NETGEAR, Inc. website at <http://kbserver.netgear.com/main.asp>.

## How to Print this Manual

---

Your computer must have the free Adobe Acrobat reader installed in order to view and print PDF files. The Acrobat reader is available on the Adobe Web site at <http://www.adobe.com>.

- **Printing a PDF Chapter.** Use the *PDF of This Chapter* link at the top left of any page.
  - Click the *PDF of This Chapter* link at the top left of any page in the chapter you want to print. The PDF version of the chapter you were viewing opens in a browser window.
  - Click the print icon in the upper left of your browser window.
- **Printing a PDF version of the Complete Manual.** Use the *Complete PDF Manual* link at the top left of any page.
  - Click the *Complete PDF Manual* link at the top left of any page in the manual. The PDF version of the complete manual opens in a browser window.
  - Click the print icon in the upper left of your browser window.



**Tip:** If your printer supports printing two pages on a single sheet of paper, you can save paper and printer ink by selecting this feature.

## Revision History

---

Part Number	Version Number	Date	Description
202-10248-01	1.0	March 2007	Initial release
202-10562-01	1.0	January 2010	Hardware v2.0 and new software features including: <ul style="list-style-type: none"><li>• DoS protection</li><li>• DHCP filtering</li><li>• Voice VLAN</li><li>• Auto-VoIP</li><li>• DiffServ</li><li>• MAC filtering</li><li>• Protected ports</li><li>• MAC and standard/extended IP ACLs</li></ul>





# Chapter 1

## Introduction

Congratulations on the purchase of your GS108T Gigabit Smart Switch. The GS108T Smart Switch is a state-of-the-art, high-performance, IEEE-compliant network solution designed for users who require a small desktop switch and want the power of Gigabit connectivity to eliminate bottlenecks, boost performance, and increase productivity. To simplify installation, the switch is shipped ready for use out of the box.

This chapter serves as an introduction to the GS108T Smart Switch and provides the following information:

- [Overview](#)
- [Features](#)
- [Package Contents](#)

## Overview

---

This Installation Guide is for the GS108T Gigabit Smart Switch. This product offers support for eight 10/100/1000 Mbps auto-sensing ports.

Using Gigabit ports, high-speed connections can be made to a server or network backbone. For example:

- Linking to high-speed servers
- Providing 10/100/1000 Mbps copper connectivity

The GS108T Smart Switch also provides the benefit of administrative management with a complete package of features for the observation, configuration, and control of the network. With a Web-based Graphical User Interface (GUI), the switch's many capabilities can be viewed and used in a simple and intuitive manner. The switch's management features include configuration for port and switch information, VLAN for traffic control, port trunking for increased bandwidth, and Class of Service (CoS) for traffic prioritization. These features provide better understanding and control of the network. Initial discovery of the switch on the network requires the Smart Control Center program, a utility that runs on a PC.

The GS108T Smart Switch is a free-standing switch. It is IEEE-compliant and offers low latency for high-speed networking. All ports can automatically negotiate to the highest speed. This capability makes the switch ideal for environments that have a mix of Ethernet, Fast Ethernet, or Gigabit Ethernet devices. In addition, all RJ-45 ports operate in half-duplex or full-duplex mode. The maximum segment length is 328 feet (100 meters) over Category 5 Unshielded Twisted-Pair (UTP) cable.

## Features

---

The following list identifies the key features of the GS108T Smart Switch.

- Eight RJ-45 10/100/1000 Mbps auto sensing Gigabit switching ports.
- The devices support full NETGEAR Smart Switch functionality.
- The devices provide full compatibility with IEEE standards:
  - IEEE 802.3i, (10BASE-T)
  - IEEE 802.3u (100BASE-TX)
  - IEEE 802.3ab (1000BASE-T)
  - IEEE 802.3x (Full-duplex flow control)
  - IEEE 802.3af (Power over Ethernet)
- Auto-sensing and auto-negotiating capabilities for all ports.
- Auto Uplink™ on all ports to make the right connection.
- Automatic address learning function to build the packet-forwarding information table. The table contains up to 4K Media Access Control (MAC) addresses.
- Store-and-Forward transmission to remove bad packets from the network.
- Full-duplex IEEE 802.3x pause frame flow control.
- Active flow control to minimize packet loss/frame drops.
- Half-duplex back-pressure control.
- Per port LEDs, power LED.
- NETGEAR Green product series.
- External 12V/1A PA or power obtained from IEEE 802.3af PSE.

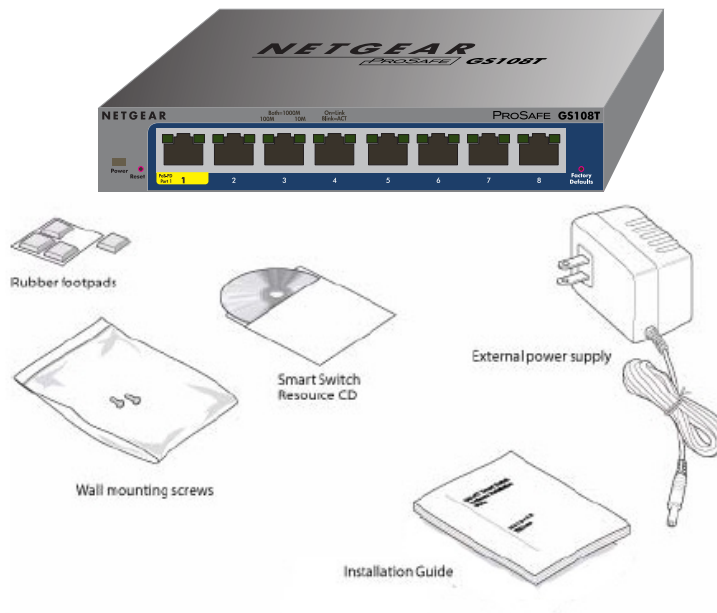
## Green Features

The GS108T Smart Switch supports the following power-saving features:

- The power consumption automatically adjusts based on the RJ-45 cable length.
- Each port is configured to automatically power down when the port link is down.

## Package Contents

Figure 1-1 shows the package contents of the GS108T Gigabit Smart Switch.



**Figure 1-1**

Verify that the package contains the following:

- GS108T Gigabit Smart Switch
- Rubber footpads for tabletop installation
- Wall mounting screws (2)
- External power supply

- Installation guide
- Smart Switch Resource CD with Smart Control Center utility and User's manual

If any item is missing or damaged, contact the place of purchase immediately.

# Chapter 2

## Physical Description

This chapter describes the GS108T Gigabit Smart Switch hardware features. Topics include:

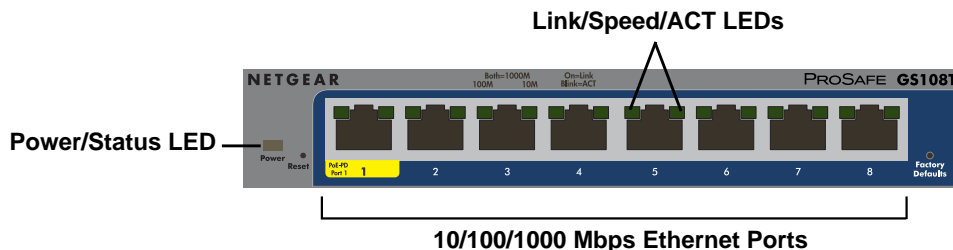
- [GS108T Front and Back Panel Configuration](#)
- [LED Designations](#)
- [Device Hardware Interfaces](#)

### GS108T Front and Back Panel Configuration

---

The GS108T Smart Switch is an eight-port 10/100/1000 Mbps Smart Switch. Every RJ-45 port is capable of sensing the line speed and negotiating the operation duplex mode with the link partner automatically

Figure 2-1 illustrates the NETGEAR GS108T Smart Switch front panel:



**Figure 2-1**

The front panel contains the following:

- Eight RJ-45 connectors for 10/100/1000 Mbps auto-sensing Gigabit Ethernet switching ports
- Reset button to restart the device
- Recessed default reset button to restore the device back to the factory defaults
- Link, Speed, and Activity LEDs for each port
- Power and Status LED

Figure 2-2 illustrates the NETGEAR GS108T Smart Switch back panel:



**Figure 2-2**

The back panel contains a DC input for the supplied 12V/1A external power adapter.

## LED Designations

### Port LEDs

The following table describes the port LED designations.

**Table 2-1. Port LEDs**

LED	Designation
100 Mbps Link/ACT (Left LED)	<ul style="list-style-type: none"> <li>• <b>Off</b> - No 100 Mbps link is established on the port.</li> <li>• <b>Solid Green</b> - A valid 100 Mbps link is established on the port.</li> <li>• <b>Flashing Green</b> - Packet transmission or reception is occurring on the port at 100 Mbps.</li> </ul>
10 Mbps Link/ACT (Right LED)	<ul style="list-style-type: none"> <li>• <b>Off</b> - No 10 Mbps link is established on the port.</li> <li>• <b>Solid Green</b> - A valid 10 Mbps link is established on the port.</li> <li>• <b>Flashing Green</b> - Packet transmission or reception is occurring on the port at 10 Mbps.</li> </ul>
1000 Mbps Link/ACT (Both LEDs)	<ul style="list-style-type: none"> <li>• <b>Off</b> - No 1000 Mbps link is established on the port.</li> <li>• <b>Solid Green</b> - A valid 1000 Mbps link is established on the port.</li> <li>• <b>Flashing Green</b> - Packet transmission or reception is occurring on the port at 1000 Mbps.</li> </ul>

## System LEDs

The following table describes the system LED designations.

**Table 2-2. System LEDs**

LED	Designation
Power/Status LED	<ul style="list-style-type: none"> <li>• <b>Solid Green</b> - Power is supplied to the switch and is operating normally.</li> <li>• <b>Solid Yellow</b> - The switch is booting.</li> <li>• <b>Off</b> - Power is disconnected.</li> </ul>

## Device Hardware Interfaces

### RJ-45 Ports

RJ-45 ports are auto-sensing ports. When inserting a cable into an RJ-45 port, the switch automatically ascertains the maximum speed (10, 100, or 1000 Mbps) and duplex mode (half-duplex or full-duplex) of the attached device. All ports support only unshielded twisted-pair (UTP) cable terminated with an 8-pin RJ-45 plug.

To simplify the procedure for attaching devices, all RJ-45 ports support Auto Uplink. This technology allows attaching devices to the RJ-45 ports with either straight-through or crossover cables. When inserting a cable into the switch's RJ-45 port, the switch automatically:

- Senses whether the cable is a straight-through or crossover cable.
- Determines whether the link to the attached device requires a “normal” connection (such as when connecting the port to a PC) or an “uplink” connection (such as when connecting the port to a router, switch, or hub).
- Configures the RJ-45 port to enable communications with the attached device, without requiring user intervention. In this way, the Auto Uplink technology compensates for setting uplink connections, while eliminating concern about whether to use crossover or straight-through cables when attaching devices.

### Powered-Device Port

The NETGEAR GS108T Smart Switch is a PoE Powered Device (PD) and can receive power from PoE Power Sourcing Equipment (PSE). To power the GS108T Smart Switch from a PoE power source, such as the NETGEAR GS748TPS ProSafe Gigabit Stackable PoE Smart Switch, you can connect the PSE to Port 1 on the GS108T Smart Switch through a standard Cat5 UTP cable. This allows the GS108T Smart Switch to be powered by PoE.

## **Reset Button**

The Smart Switch has a Reset button on the front panel to allow you to manually reboot the switch. This action is equivalent to powering the unit off and back on. The last saved configuration is loaded into the switch as it resets. To operate the Reset button, insert a device such as a paper clip into the opening to press the recessed button. The front-panel LEDs should extinguish and light again as the switch performs its Power On Self Test (POST).

## **Factory Defaults Button**

The Smart Switch has a Factory Defaults button on the front panel so that you can remove the current configuration and return the device to its factory settings. When you enable the Factory Defaults button, all settings, including the password, VLAN settings, and port configurations will be set to the factory default values. To operate the Factory Defaults button, insert a device such as a paper clip into the opening to press the recessed button for at least two seconds.



# Chapter 3

## Applications

Your GS108T Gigabit Smart Switch is designed to provide flexibility in configuring your network connections. It can be used as a stand-alone device or with 10 Mbps, 100 Mbps, and 1000 Mbps hubs and switches.

### Desktop Switching

---

The GS108T Smart Switch can be used as a desktop switch to build a small network that enables users to have 1000 Mbps access to a file server. With full-duplex enabled, the switch port connected to the server or PC can provide 2000 Mbps throughput.

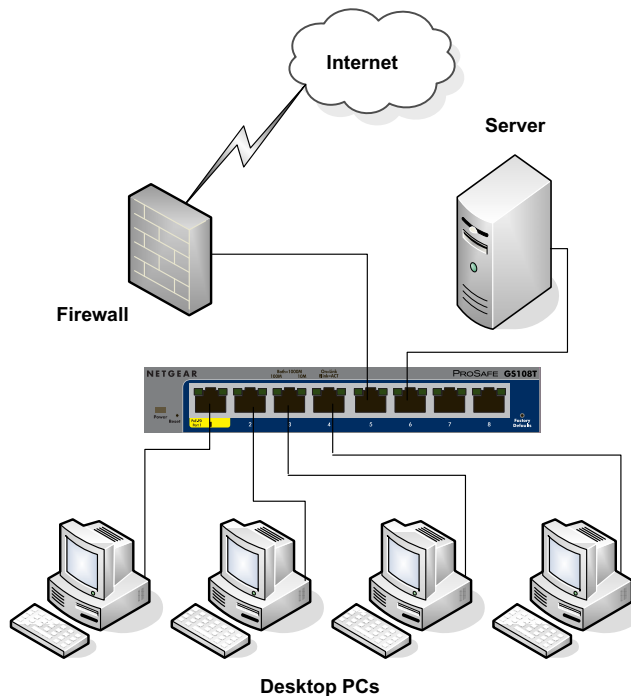


Figure 3-1



# Chapter 4 Installation

This chapter describes the installation procedures for your GS108T Gigabit Smart Switch. Switch installation involves the following steps:

Step 1: Preparing the Site

Step 2: Installing the Switch

Step 3: Checking the Installation

Step 4: Connecting Devices to the Switch

Step 5: Applying Power

Step 6: Managing the Switch using a Web Browser or the PC Utility

## Step 1: Preparing the Site

---

Before you install the switch, ensure the operating environment meets the site requirements in the following table.

**Table 4-1. Site Requirements**

Characteristics	Requirements
Mounting	<ul style="list-style-type: none"><li>• <b>Desktop installations</b> - Provide a flat table or shelf surface.</li><li>• <b>Wall-mount installations</b> - Wall-mount: select a location. You also need the mounting screws supplied with your switch.</li></ul>
Access	Locate the switch in a position that allows access to the front panel RJ-45 ports, view the front panel LEDs, and access the power connector.

**Table 4-1. Site Requirements (continued)**

Characteristics	Requirements
Power source	<p>Provide a power adapter (included). Power specifications for the switch are shown in <a href="#">Appendix A</a> . Ensure the AC outlet is not controlled by a wall switch, which can accidentally turn off power to the outlet and the switch.</p> <p>Alternatively, you can use IEEE802.3af-compliant power sourcing equipment (PSE) to supply power to the switch. Connect the PSE to Port 1 on the GS108T switch.</p> <p>When both an external power supply and a PoE source are connected to the GS108T switch, the external power source takes priority.</p>
Environmental	<ul style="list-style-type: none"><li>• <b>Temperature</b> - Install the switch in a dry area, with ambient temperature between 0 and 50°C (32 and 122°F). Keep the switch away from heat sources such as direct sunlight, warm air exhausts, hot-air vents, and heaters.</li><li>• <b>Operating humidity</b> - The installation location should have a maximum relative humidity of 90%, non-condensing.</li><li>• <b>Ventilation</b> - Do not restrict airflow by covering or obstructing air inlets on the sides of the switch. Keep at least 2 inches (5.08 centimeters) free on all sides for cooling. Be sure there is adequate airflow in the room or wiring closet where the switch is installed.</li><li>• <b>Operating conditions</b> - Keep the switch at least 6 ft. (1.83 m) away from nearest source of electromagnetic noise, such as a photocopier machine.</li></ul>

---

## Step 2: Installing the Switch

---

The GS108T Smart Switch can be used on a flat surface or mounted on the wall.

### Installing the Switch on a Flat Surface

The switch ships with four self-adhesive rubber footpads. Stick one rubber footpad on each of the four concave spaces on the bottom of the switch. The rubber footpads cushion the switch against shock/vibrations.

### Wall Mounting the Switch

To mount the switch on a wall (optional), install the two provided screws in positions that correspond to the slots on the bottom side of the GS108T, then mount the switch.

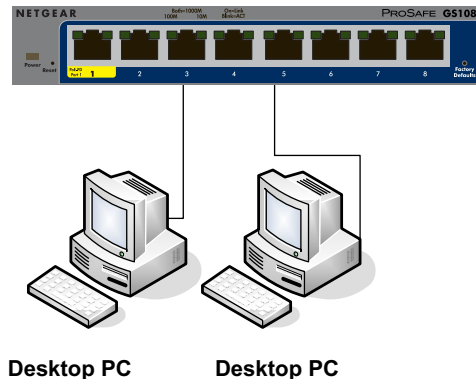
## Step 3: Checking the Installation

Before applying power to the switch, perform the following:

- Inspect the equipment thoroughly.
- Verify that all cables are installed correctly.
- Check cable routing to make sure cables are not damaged or creating a safety hazard.
- Ensure all equipment is mounted properly and securely.

## Step 4: Connecting Devices to the Switch

The following procedure describes how to connect PCs to the switch's RJ-45 ports. The GS108T Smart Switch contains Auto Uplink technology, which allows the attaching of devices using either straight-through or crossover cables.



**Figure 4-1**

Connect each PC to an RJ-45 network port on the Switch front panel (Figure 4-1). Use Category 5 (Cat5) Unshielded Twisted-Pair (UTP) cable terminated with an RJ-45 connector to make these connections.



**Note:** Ethernet specifications limit the cable length between the switch and the attached device to 100 m (328 ft.).

## Step 5: Applying Power

---

The GS108T Smart Switch does not have an ON/OFF switch. You can apply or remove power by:

- Connecting or disconnecting the power adapter to or from an AC power source
- Connecting or disconnecting Port 1 to or from a PoE power source.



**Note:** When both an external AC power source and a PoE power source are connected to the GS108T switch, the external AC power source takes priority.

### Using an AC Power Source

Before connecting the power cord, select an AC outlet that is not controlled by a wall switch, which can turn off power to the switch. After selecting an appropriate outlet, use the following procedure to apply AC power.

1. Connect the end of the supplied IEC AC power adapter cable to the power receptacle on the back of the switch.
2. Connect the AC power adapter cable into a power source such as a wall socket or power strip.

When applying power, the Power LED on the switch's front panel illuminates.

If the Power LED does not go on, check that the power cable is plugged in correctly and that the power source is good. If this does not resolve the problem, refer to [Appendix A](#).

### Using a PoE Power Source

The NETGEAR GS108T Smart Switch is a PoE Powered Device (PD) and can receive power from IEEE 802.3af-compliant PoE Power Sourcing Equipment (PSE). To power the GS108T Smart Switch through PoE, use the following procedures:

1. Connect a standard Cat5 UTP cable to Port 1 (also labeled PoE-PD) on the front of the switch.
2. Connect the other end of the Cat5 cable to the appropriate port on the PoE Power Sourcing Equipment (PSE).

When applying power, the Power LED on the switch's front panel illuminates.

If the Power LED does not go on, check that the power cable is plugged in correctly and that the power source is good. If this does not resolve the problem, refer to [Appendix A](#).

## Step 6: Managing the Switch using a Web Browser or the PC Utility

---

The GS108T Smart Switch contains software for viewing, changing, and monitoring the way it works. This management software is not required for the switch to work. The ports can be used without using the management software. However, the management software enables the setup of VLAN and Trunking features and also improves the efficiency of the switch, which results in the improvement of its overall performance as well as the performance of the network.

After powering up the switch for the first time, the Smart Switch can be configured using a Web browser or a utility program called Smart Control Center. For more information about managing the switch, see the *GS108T Software Administration Manual* on the *Smart Switch Resource CD*.



**Note:** When the device powers up, there is a default IP address already configured on the device. The default IP address is 192.168.0.239 and subnet mask 255.255.255.0.





# Appendix A

## Troubleshooting

This chapter provides information about troubleshooting the NETGEAR Smart Switch. Topics include the following:

- [Troubleshooting Chart](#)
- [Additional Troubleshooting Suggestions](#)

### Troubleshooting Chart

---

The following table lists symptoms, causes, and solutions of possible problems.

**Table A-1. Troubleshooting Chart**

Symptom	Cause	Solution
Power LED is off.	No power is received.	If you are using AC power, check the power cord connections for the switch at the switch and at the power source (such as the wall socket or power strip). Ensure all cables used are correct and comply with Ethernet specifications. If you are using a PSE, verify that the Ethernet cable between the switch and the PSE is good. Make sure the cable does not exceed the maximum length supported by the PSE. Make sure the PSE has not exceeded the amount of power it can provide to all connected devices.
Link LED is off or intermittent.	Port connection is not working.	Check the crimp on the connectors and make sure that the plug is properly inserted and locked into the port at both the switch and the connecting device. Ensure all cables used are correct and comply with Ethernet specifications. Check for a defective NIC on the connected device. Check for a defective cable or port by testing them in an alternate environment where all products are functioning.

**Table A-1. Troubleshooting Chart**

Symptom	Cause	Solution
File transfer is slow or performance degradation is a problem.	Half-duplex or full-duplex setting on the switch and the connected device are not the same.	Make sure the attached device is set to auto-negotiate.
A segment or device is not recognized as part of the network.	One or more devices are not properly connected, or cabling does not meet Ethernet guidelines.	Verify that the cabling is correct. Ensure all connectors are securely positioned in the required ports. Equipment may have been accidentally disconnected.
ACT LED is flashing continuously on all connected ports and the network is disabled.	A network loop (redundant path) has been created.	Break the loop by ensuring that there is only one path from any networked device to any other networked device.

---

## Additional Troubleshooting Suggestions

---

If the suggestions in Troubleshooting Chart do not resolve the problem, refer to the troubleshooting suggestions in this section.

### Network Adapter Cards

Ensure the network adapter cards installed in the PCs are in working condition and the software driver has been installed.

### Configuration

If problems occur after altering the network configuration, restore the original connections and determine the problem by implementing the new changes, one step at a time. Ensure that cable distances, repeater limits, and other physical aspects of the installation do not exceed the Ethernet limitations.

### Switch Integrity

If required, verify the integrity of the switch by resetting the switch. To reset the switch, remove the AC power from the switch and then reapply AC power. If the problem continues, contact NETGEAR technical support. In North America, call 1-888-NETGEAR. If you are outside of North America, please refer to the support information card included with your product.

## **Auto-Negotiation**

The RJ-45 ports negotiate the correct duplex mode and speed if the device at the other end of the link supports auto negotiation. If the device does not support auto negotiation, the switch only determines the speed correctly and the duplex mode defaults to half-duplex.

The gigabit port on the Gigabit module negotiates speed, duplex mode, and flow control, provided that the attached device supports auto-negotiation.



# Appendix B

## Technical Specifications

### Network Protocol and Standards Compatibility

IEEE 802.3i 10BASE-T

IEEE 802.3u 100BASE-TX

IEEE 802.3ab 1000BASE-T

IEEE 802.3x flow control

IEEE 802.3af

### Management

Windows 2000 + XP, Vista; Microsoft Explorer 6.0 or higher

IEEE 802.1Q VLAN

IEEE 802.3ad Link Aggregation

IEEE 802.1D Spanning Tree Protocol

IEEE 802.1W Rapid Spanning Tree Protocol

IEEE 802.1X Port Security

IEEE 802.3ab LLDP

SNMP v1, v2c, and v3

HTTP and HTTPS

Port Mirroring (RX, TX, and Both)

IGMP Snooping v1/v2/v3

IEEE 802.1p Class of Service (CoS)

SNTP (Simple Network Time Protocol) 2 servers. Disabled by default.

Jumbo Frame Support

## **Interface**

Eight RJ-45 connectors for 10BASE-T, 100BASE-TX, and 1000BASE-T (Auto Uplink™ on all ports).

## **LEDs**

Per port (Gigabit): Link/Activity, Speed

Per device: Power

## **Performance Specifications**

Forwarding modes: Store-and-forward

Bandwidth: 16 Gbps

Address database size: 4K media access control (MAC) addresses per system

Mean Time Between Failure (MTBF): 278,553 hours (~32 years)

## **Power Supply**

Power Consumption: 8.5W maximum

100-240VAC/50-60 Hz universal input

## **Physical Specifications**

Dimensions (H x W x D): 27 x 158 x 105 / 1.1 x 6.2 x 4.1 (mm/in)

Weight: 0.56/1.23 (kg/lbs)

## **Environmental Specifications**

Operating temperature: 0°C to 50°C (32 to 122°F)

Storage temperature: -20°C to 70°C (28 to 158°F)

Operating humidity: 10%-90% maximum relative humidity, non-condensing

Storage humidity: 5%-95% maximum relative humidity, non-condensing

Operating altitude: 3,000 m (10,000 ft.) maximum

Storage altitude: 3,000 m (10,000 ft.) maximum

## **Electromagnetic Emissions**

FCC Class B

CE mark, commercial

CE Class B, include EN55022 (CISPR 22) / 55024 / 50082-1

VCCI Class B

C-Tick

KCC

## **Safety**

CE mark, commercial

UL listed (UL 1950)/cUL IEC950/EN60950

CB and CCC





## Numerics

1000BASE-T *1-2*  
100BASE-TX *1-2*  
10BASE-T *1-2*  
8-pin *2-3*

## A

Applying AC Power *4-4*  
Auto Sensing *1-2*  
Auto Uplink *2-3*  
Auto-negotiating *1-2*  
Auto-sensing *2-3*

## B

Back-pressure *1-2*

## C

Category 5 Unshielded Twisted-Pair *1-2*  
Checking the Installation *4-3*  
Class of Service *1-1*  
Connecting Devices to the Switch *4-3*  
Copper *1-1*  
Crossover *2-3*

## D

Default IP Address *4-5*  
Default Reset Button *2-1*  
Device Hardware Interfaces *2-3*  
Duplex Mode *2-3*

## E

Example of Desktop Switching *3-1*

## F

Factory Default Button *2-4*  
Factory Defaults *2-1*  
Flat Surface *4-2*  
Full-duplex *1-2*

## G

Gigabit Ports *1-1*

## H

High-speed Servers *1-1*

## I

IEEE 802.3ab *1-2*  
IEEE 802.3af *1-2, 4-4*  
IEEE 802.3i *1-2*  
IEEE 802.3u *1-2*  
IEEE 802.3x *1-2*  
IEEE Standards *1-2*  
IEEE-compliant *1-2*  
Installation Guide *1-4*  
Installing the Switch *4-2*

## L

LED Designations *2-2*  
Low Latency *1-2*

## **M**

MAC *1-2*  
Media Access Control *1-2*

## **O**

ON/OFF switch *4-4*  
Operating Conditions *4-2*  
Operating Environment *4-1*  
Operating humidity *4-2*  
Overview *1-1*

## **P**

Package Contents *1-3*  
Pause Frame Flow Control *1-2*  
PD *2-3, 4-4*  
PoE *2-3, 4-2, 4-4*  
Port LEDs *2-2*  
Power cord *1-3*  
Power On Self Test *2-4*  
Power over Ethernet *1-2*  
Preparing the Site *4-1*  
PSE *1-2, 2-3, 4-2, 4-4, A-1*

## **R**

Reset Button *2-1*  
RJ-45 *1-2*  
RJ-45 Ports *2-3*  
Rubber footpads *1-3, 4-2*

## **S**

Site Requirements *4-1*  
Smart Control Center *1-1, 1-4, 4-5*  
Smart Switch Resource CD *1-4*  
Straight-through *2-3*  
System LEDs *2-3*

## **T**

Temperature *4-2*  
Traffic Control *1-1*  
Troubleshooting Chart *A-1*

## **U**

User Intervention *2-3*  
User's Manual *1-4*  
UTP *4-3*

## **V**

Ventilation *4-2*  
VLAN *1-1, 2-4, 4-5*

## **W**

Warranty *1-4*  
Web-based Graphical User Interface *1-1*