

# LevelOne

WUA-0315

11g Wireless USB Adapter

---

---

## ***Quick Installation Guide***

---

---

English

This guide covers only the most common situations.  
All detail information is described in the user manual.

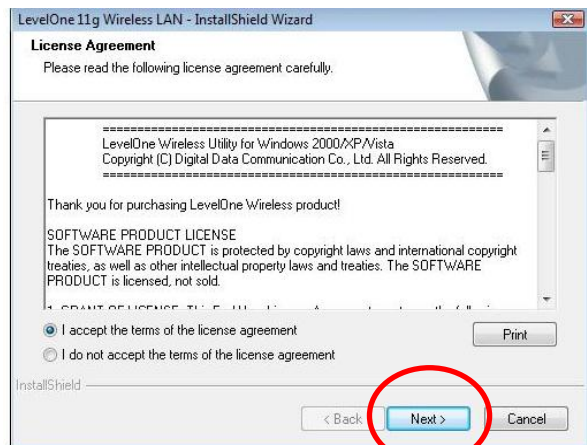
## Setup

---

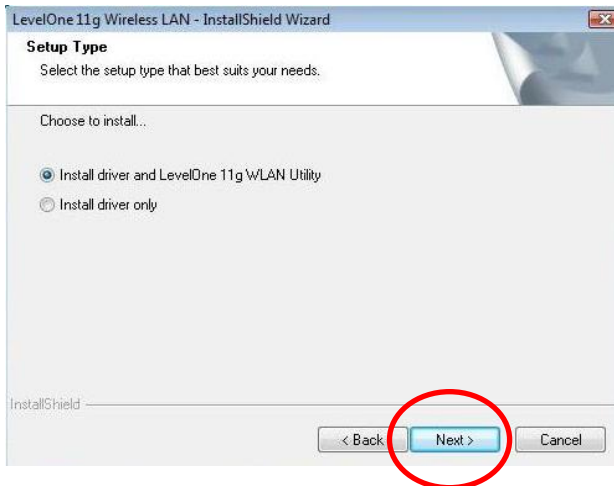
You should install the supplied software **BEFORE** inserting the Wireless Adapter.

### Configuration

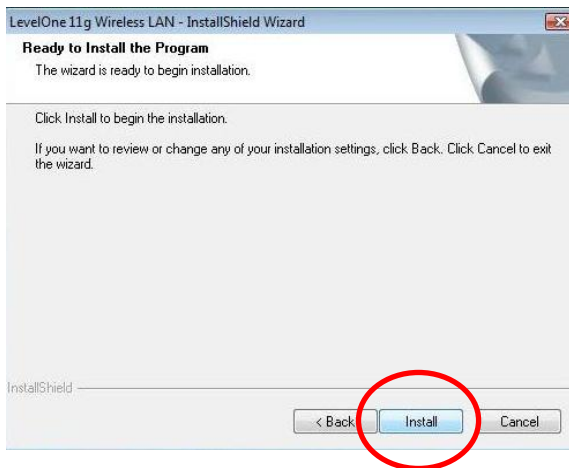
1. Insert the CD into the CD-ROM drive on your PC.
2. The autorun program should start automatically. If it does not, please run autorun.exe under your CD-ROM drive
3. In the autorun screen, click **Utility** begins software installation.



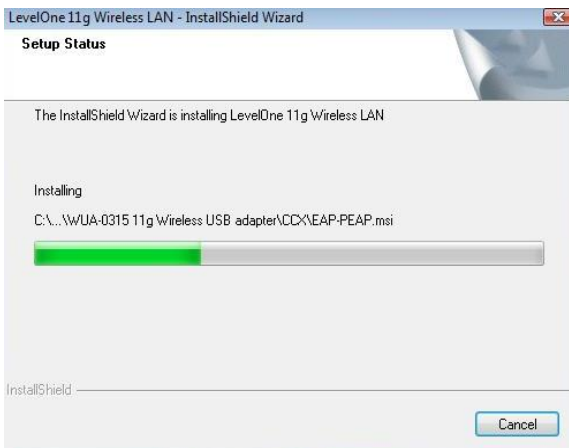
4. On the screen above, select “I accept the terms of the license agreement” then click “Next” to start the installation.



5. On the screen above, select “Install driver and LevelOne 11g WLAN Utility” or “Install driver only” then click “Next” to continue the installation.
6. On the screen below, click “Install” to continue the installation.



7. Follow the on screen instruction and step through the installation procedures.



8. Insert the USB adapter into USB port when installation procedures are completed.
9. The Windows “Driver Software Installation” wizard will prompt and then install the software automatically.



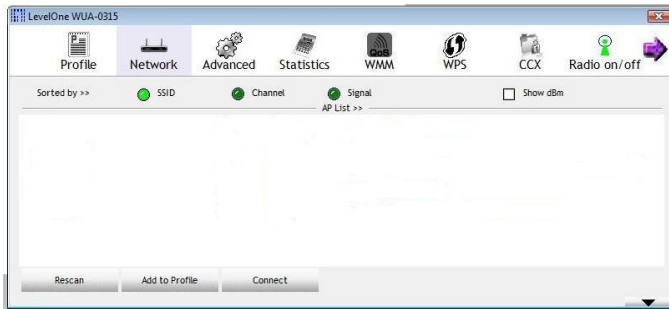
10. When the Windows wizard is complete, you will now have a new icon in your system tray.

# Windows Utility

---

You can click *Start - Programs - LevelOne WUA-0315 - LevelOne 11g Wireless Utility* to open the application.

The utility opens to the **Network** tab page, as shown below.



## To Connect to a Wireless Network

- Click the name of the wireless network to which you want to connect, and then click **Add to Profile**.
- You can click the name of the wireless network to which you want to connect, and then click **Connect** button.