



## SERVICE MANUAL

# VACUUM CLEANER WITH WATER FILTER

**MODEL:**  
**AG – 1200**



SERVICE

KOBLENZ ELECTRICA S.A. DE C.V.  
E-mail: [servicio@koblenz-electric.com](mailto:servicio@koblenz-electric.com)

## INDEX

I.-OPERATION SISTEM.....	Page	2
II.-REPLACEMENT PROCEDURES.....	Page	2 to 3
III.-FAILURE AND SOLUTIONS.....	Page	4
IV.-EXPLOSIVE VACUUM.....	Page	5
V.-VACUUM CLEANER PARTS LIST.....	Page	6
VI.-TANK ASSEMBLY.....	Page	7
VII.-DEPOSIT PARTS LIST.....	Page	8
VIII.-ACCESORIES.....	Page	9
IX.-ACCESORIES PARTS LIST.....	Page	10
X.-ELECTRIC DIAGRAM.....	Page	11

## I.-OPERATION SISTEM.

MODEL	Volts	Watts	Hz.
AG-1200	120 ~	1200	60

a).- Motor must work without vibrations

b).- The carbon brushes spark should be small and uniform and the commutor must have dark brown strip and uniform

## II.- REPLACEMENT PROCEDURES

### 1.- TO REAPLACE THE COVER (4)

- 1.1.- Remove the filter's unit water (33)
- 1.2.- Remove the screws located under the body base (13)
- 1.3.- Replace the new cover, reassemble it was initially placed

### 2.-TO REPLACE THE POWER CONTROL (2)

- 2.1.- Follow steps 1.1 to 1.2
- 2.2.- Disconect cord reel of electric panel
- 2.3.- Remove two screws these hold the handle cover top (1) and under the base(3) reassemble both handle to remove the power control (2)
- 2.4.- Remove and replace the power control, reassemble it was initially placed

### 3.- TO REPLACE THE MOTOR

- 3.1.- Follow steps 1.1 and 1.2
- 3.2.- Disconect the harnes (4) terminal's motor and terminal's line cord
- 3.3.- Remove the four screws holding the motor, release one more located under the cover, and in turn removed engine assembly
- 3.4.- Remove the four screws hold front part motor (30) and release the same
- 3.5.- Remove the ring's motor(29) Motor Gasket-Rear (23) Motor Gasket-Front (25) and Motor (24)
- 3.6.- Replace the motor; placed Gasket-Front (25) and rear (23) motor,(24) placing all assembled in the rear motor (26)
- 3.7.- place motor bearing ring(29) make sure to respect the positions of the ring on back tap's motor

**NOTE: IF YOU DON'T FOLLOW THIS STEPS, YOU CAN'T PLACE THE ENGINE FRONT COVER**

- 3.8.- Reassemble it was initially placed

#### **4.- TO REPLACE RETRACTIL REEL (4)**

4.1.- Follow steps 1.1, 1.2,2.2, 3.2 y 3.3

4.2.- Once disconnected the harness and electronic panel of terminal's retractable reel (31) , release accesory compartment , use flat blade screw driver, remove the cable entry (12) clamping bouncing staples to lower part (13) release the screws securing the cable entrance

4.3.- Repleace retractil reel, placing all components on cavity like was initially placed

#### **5.- TO REPLACE ELECTRONIC PANEL (31)**

5.1.- Follow steps 1.1, 1.2, 2.2

5.2.- Disconect retractil reel terminals

5.3.- Replace electronic (31)

5.4.- Reassemble it was initially placed

#### **6.- TO REPLACE THE SWITCH**

6.1.- Follow steps 1.1, 1.2, 2.2

6.2.- Use a flat blade screwdriver to remove the cover's interruptor (4) disconect terminals ( make sure mark the position like connected as)

6.3.- Replace the switch and Reassemble it was initially placed

#### **NOTE:**

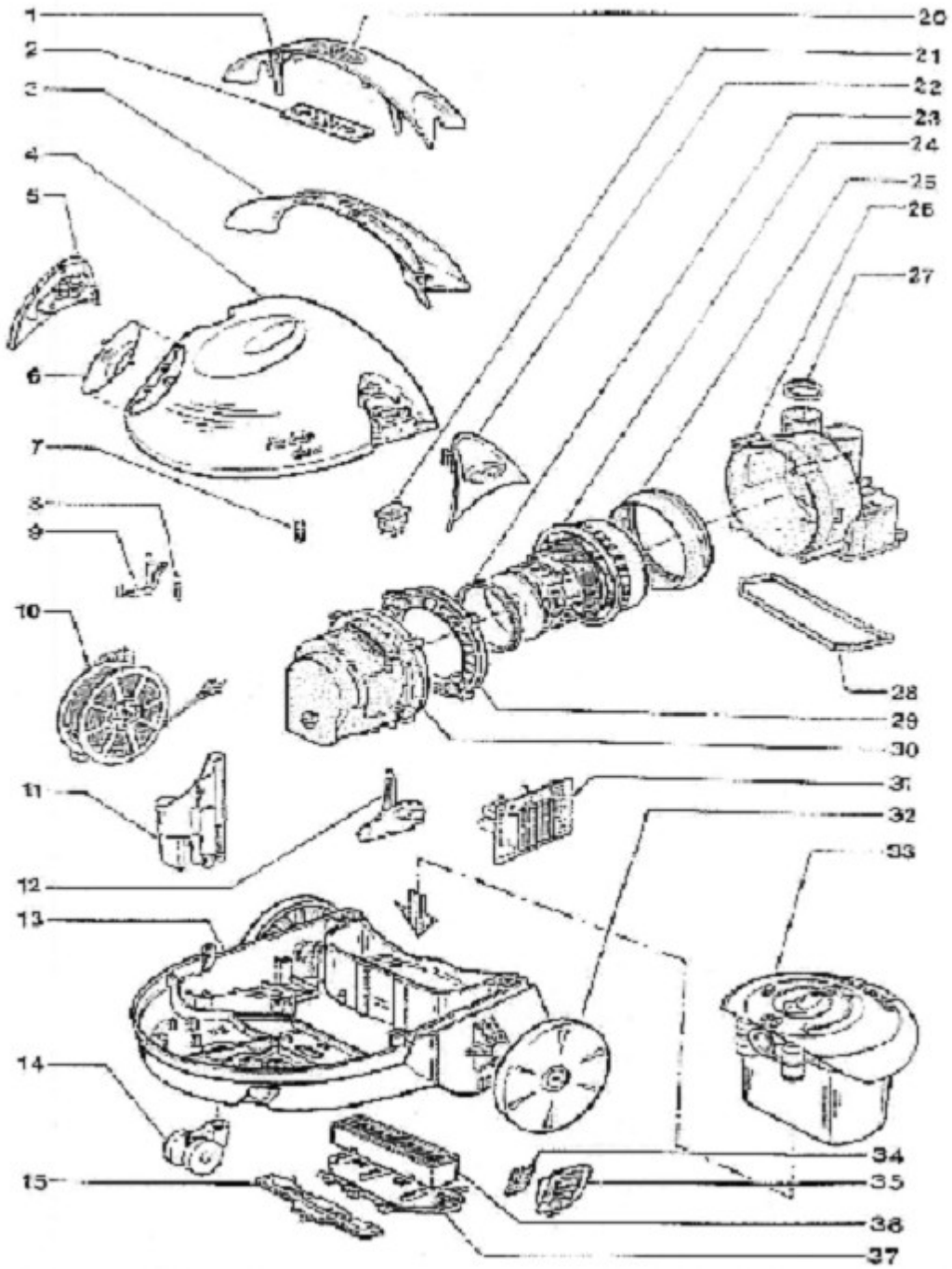
#### **WHEN ORDERING, DO NOT FORGET TO SPECIFY:**

- ✓ **PART NUMBER**
- ✓ **DESCRIPTION**
- ✓ **MODEL NUMBER**

### III. - FAILURE AND SOLUTIONS

<b>FAILURE</b>	<b>CAUSE</b>	<b>SOLUTION</b>
<b>NOT TURN</b>	Not firmly plugged	Check plug connection
	Plugged or line cord Damaged	Replace plugg or line cord
	Damaged reel turntables	Replace Reel
	Damaged motor	Replace motor
<b>THE CORD DOES NOT REWIND FULLY</b>	The cable is bent or tangled	Release all cable and one more time press rewind button
<b>LOW SUCTION</b>	Main Filter Dirty	Clean filter
	Closed hose or wand	Clean obstruction
	Slow motor	Check carbon brushes
	Damaged Filter	Replace filter

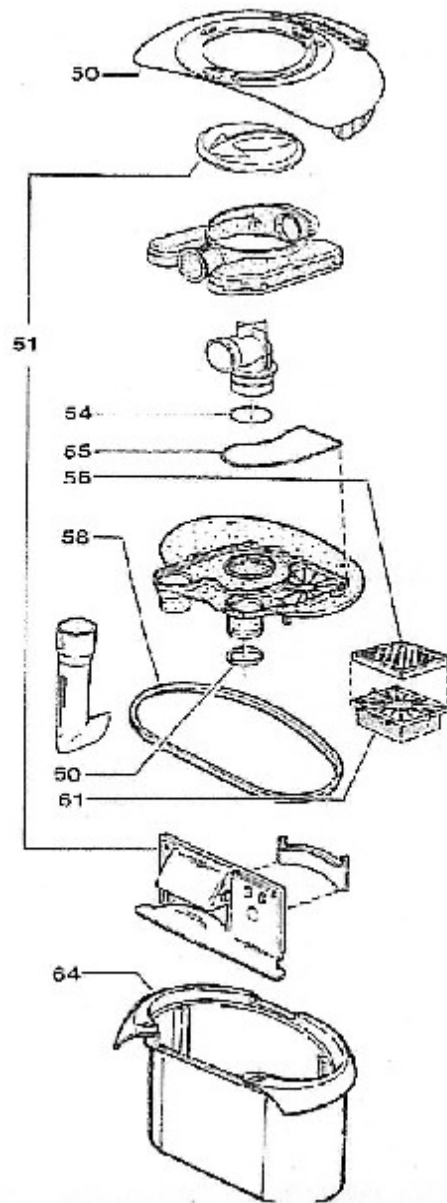
# IV.- EXPLOSIVE VACUUM



**V.- PARTS LIST EXPLOSIVE VACUUM**

<b>NUM</b>	<b>FAKIR</b>	<b>KOBLENZ</b>	<b>DESCRIPTION</b>
1	20 22 059	49-5001-0	HANDLE COVER
2	20 22 048	49-5002-8	ELECTRONIC
3	20 22 060	49-5003-6	CARRYING HANDLE
4	20 54 024	49-5004 - 4	HOSING COVER- ACQUAPUR
5	20 22 072	49-5005-1	CABLE PUSH BUTTON
6	20 22 015	49-5006-9	ACCESORY COVER
7	20 22 066	49-5007-7	SPRING
8	20 22 071	49-5008-5	TENSION SPRING
9	20 22 074	49-5009-3	CABLE PUSH BUTTON
10	20 54 032	49-5010-1	CABLE REEL
11	20 22 026	49-5011-9	ACCESORY COMPARTMENT
12	20 22 034	49-5012-7	CABLE ENTRY
13	20 22 025	49-5013-5	HOUSING LOWER PART
14	20 22 070	49-5014-3	GUIDE WEEL
15	20 22 047	49-5015-0	LOCK
20	20 22 058	49-5016-8	COVER (POWER CONTROL)
21	20 22 021	49-5017-6	SWITCH
22	20 22 073	49-5018-4	SWITCH BUTTON
23	20 22 610	49-5019-2	MOTOR GASKET-REAR
24	20 54 600	49-5020-0	BLOWER (SUCTION MOTOR) CPL 120V 60Hz
25	20 22 609	49-5021-8	MOTOR GAZKET-FRONT
26	20 22 606	49-5022-6	MOTOR HOOSING-REAR
27	20 22 607	49-5023.4	GASKET
28	20 22 069	49-5024-2	FILTER GASKET
29	20 22 608	49-5025-9	MOTOR BERAING RING
30	20 22 605	49-5026-7	MOTOR HOOSING-FRONT
31	20 54 120	49-5027-5	ELECTRONIC 120V 60Hz
32	20 22 042	49-5028-3	WHEEL GAY
33	20 22 290	49-5055-6	WATER FILTER BOX
34	20 22 087	49-5038-2	MOTOR EXHAUST AIR FILTER
35	20 22 046	49-5039-0	AXHAUST AIR GRID
36	20 22 085	49-5040-8	HEPA FILTER
37	20 22 045	49-5041-6	COVER (HEPA - FILTER)

# VI.- TANK ASSEMBLY

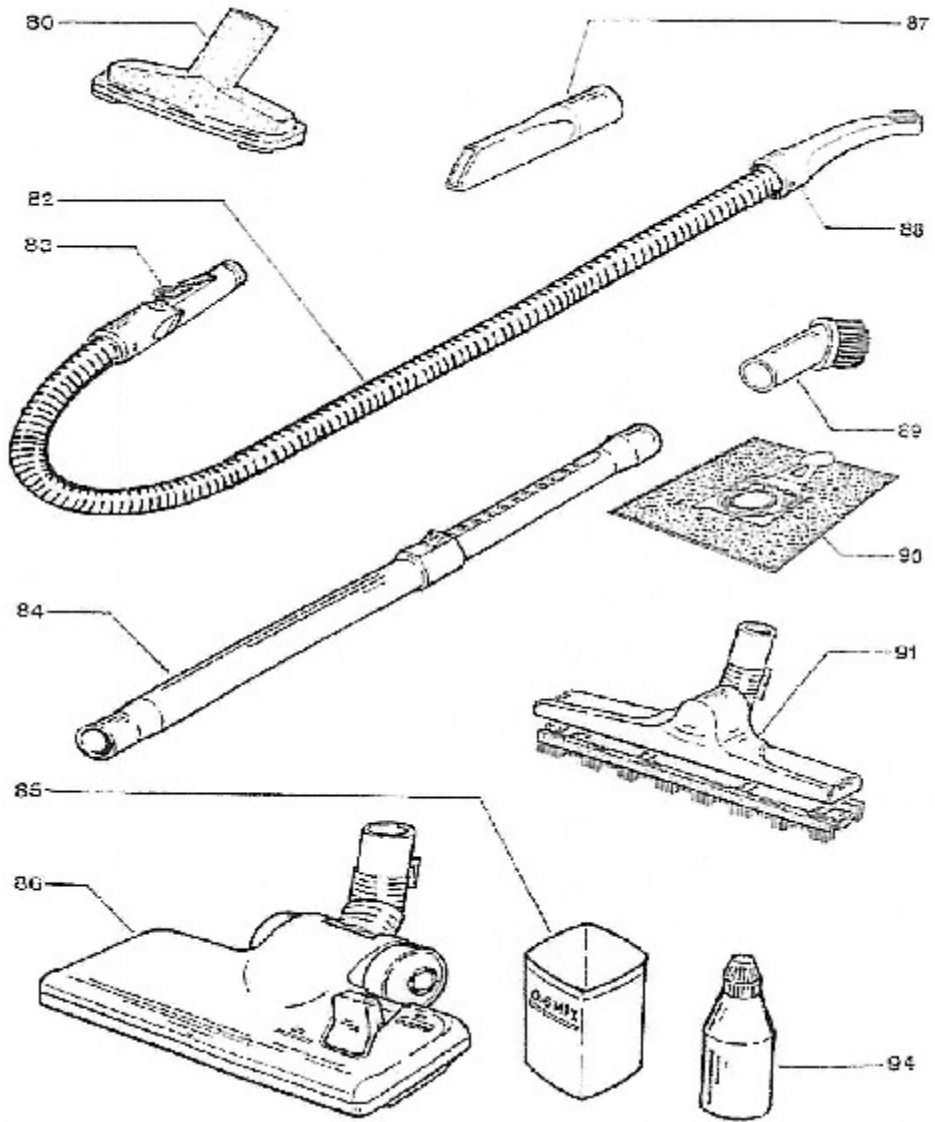


## VII.- DEPOSIT PARTS LIST

<b>NUM</b>	<b>FAKIR</b>	<b>KOBLENZ</b>	<b>DESCRIPTION</b>
50	20 22 291	49-5029-1	COVER (CANISTER)
51	20 22 280	49-5030-9	WATERFILTER INSERT
54	20 22 284	49-5031-7	GASKET
55	20 22 285	49-5032-5	FILTER GASKET
56	20 22 095	49-5033-3	MAIN FILTER
58	20 22 289	49-5034-1	TANK GASKET
60	20 22 287	49-5035-8	GASKET
61	20 22 096	49-5036-6	PRE-FILTER
64	20 22 095	49-5037-4	WATER FILTER TANK



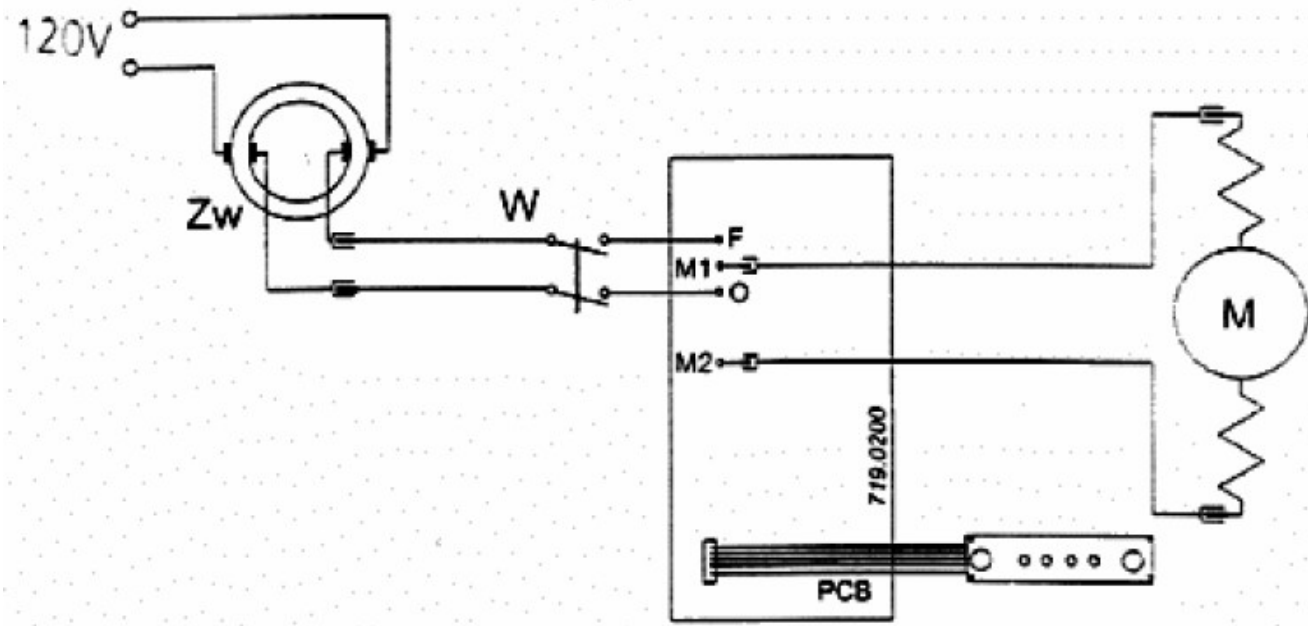
# VIII.- ACCESORIES



**IX.-ACCESORIES PARTS LIST.**

<b>NUM</b>	<b>FAKIR</b>	<b>KOBLENZ</b>	<b>DESCRIPTION</b>
80	20 18 870	49-5042-4	UPHOLSTERY NOZZLE
82	20 22 360	49-5043-2	SUCTION HOSE CPL 1650 mm
83	20 22 361	49-5053-1	SUCTION SOCKET
84	20 18 840	49-5044-0	TELESCOPIC SUCTION TUBE
85	20 22 296	49-5045-7	MEASURING BEAKER
86	20 18 830	49-5046-5	FLOOR SUCTION NOZZLE
87	20 18 851	49-5047-3	CREVICE NOZZLE
88	20 18 375	49-5048-1	SLIDE GRAY
89	20 18 852	49-5049-9	FORNITURE BRUSH
91	20 18 880	49-5050-7	HARD FLOOR NOZZLE
94	90 29 881	49-5051-5	DEFOAMER
95	20 18 820	49-5052-3	TURBO SUCTION BRUSH

X.- ELECTRIC DIAGRAM





FACTORY AUTHORIZED SERVICE

*Thorne Electric Company*

*610 Lanark Suite 205*

*San Antonio TX, 78218*

*Tel (210) 590-1226*

*Fax (210)590-1258*

*1-800-548-57*

FACTORY

KOBLENZ ELECTRICA S.A. DE C.V.

AV. CIENCIA NO.28

CUAUTITLAN IZCALLI

ESTADO DE MEXICO 54730

---

SERVICE

---

Web site: <http://www.koblentz-electric.com>

LP-AG1200-201308