

Jabra EXTREME2

Bluetooth® Mono Headset

Compatible with all Bluetooth® enabled devices*

DATASHEET



Noise cancellation is now even more extreme

The Jabra EXTREME2 builds on the great success and technology of its predecessor, the Jabra EXTREME. Jabra EXTREME2 features Noise Blackout 3.0™ - the latest generation of the Jabra noise cancellation technology which blocks out an astonishing amount of background noise. Sound quality is even better with HD Voice*, which allows you to hear the other person's voice with unbelievable sound clarity. Automatic Volume Control instantly adjusts the headset's volume to best suit your environment, so that the natural sound of your voice is retained on every call. Jabra EXTREME2's superb fit also enhances its sound quality. With the Ultimate Comfort Eargels™ and a choice of wearing styles, the headset will sit comfortably and securely, keeping you at ease whenever you're wearing it.

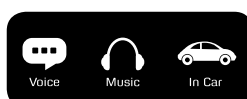
By registering your product, you will be notified of future software releases which will ensure you have all the latest features installed and get the most from your Jabra EXTREME2. To keep your headset current, simply download the latest software version via USB connector. With Jabra EXTREME2, you will enjoy clear hands-free conversations – anytime, anywhere.

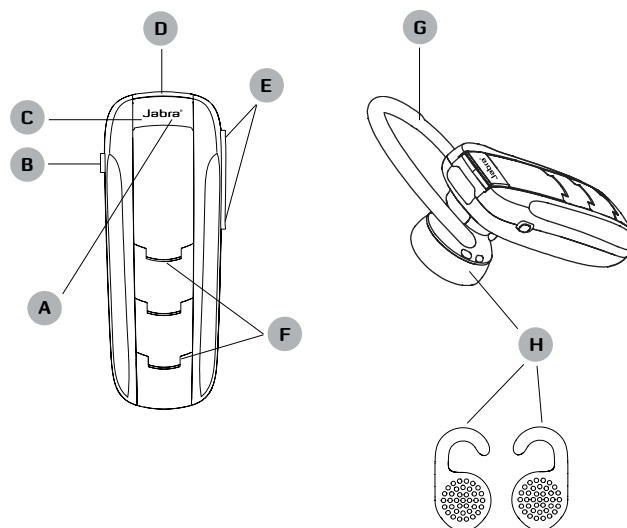
*Phone & network dependent



Reasons to choose the Jabra EXTREME2

- EXTREME NOISE CANCELLATION with Noise Blackout™ 3.0 dual microphone technology
- HD Voice *
- Spoken Caller ID, battery level, connection status and setup process with Voice Guidance





A Answer/end button

B On/off button

C LED light

D Charging socket

E Volume up/volume down

F Microphones

G Earhook

H Eargels

Quick Start Guide

Charging your headset

Charge your Jabra EXTREME2 headset until the LED light turns green. After 5 minutes the LED will turn off. Charging time is approximately 2 hours.

Turning your headset on and off

Slide on/off button to turn the headset on or off. The LED light will flash blue when the headset is on and voice guidance will also tell you that the headset is powered on.

Pairing the headset with your device

Turn your headset on and place it on your ear, press and hold the answer/end button until you hear 3 beeps then release the answer/end button. You will now be guided through the pairing process. Activate *Bluetooth®* on your device, set the phone to search for *Bluetooth®* devices and select Jabra EXTREME2. Press 'Yes' or 'OK' on the device and if asked for a PIN code confirm with PIN code 0000 (4 zeros).



Using your headset

- Answer a call – Tap the answer/end button on your headset
- End a call – Tap the answer/end button to end an active call

Wearing style

Wear the Jabra EXTREME2 headset with or without an ear hook. To wear with an ear hook please find the appropriate size and attach for right or left ear wearing. To wear without ear hook please find the appropriately sized Ultimate Comfort Eargel™ and attach for right or left wearing style.

Comparison Chart

	EXTREME	EXTREME2
		
TALK TIME	5.5 hours	5.5 hours
STANDBY TIME	10.5 days	10.5 days
BLUETOOTH GENERATION	2.1	3.0
2 MIC NOISE BLACKOUT	Noise Blackout 2.0	Noise Blackout 3.0
HD VOICE	No	Yes
VOICE GUIDANCE	No	Yes

For Questions about Jabra EXTREME2, please contact us at:
 (800) 327-2230 (US)
 (800) 489-4199 (Canada)
 techsupp@jabra.com
 Twitter.com/Jabra_US
 Facebook.com/JabraUS

A BRAND BY

GN Netcom

JABRA® IS A REGISTERED TRADEMARK OF GN NETCOM A/S

WWW.JABRA.COM/EXTREME2

