

JVC

ADIXION

GC-XA2
Action Camera



BE ACTION READY.

QUAD PROOF OUT OF THE BOX



WATER

5m



SHOCK

2m



With the ADIXXION Action Camera

Get ready to spring into action in no time. Everything you need is built-in.

Whether you're riding a bike or riding a tube, out diving or skydiving — now you can be ready to relive the action right there in the field, or stream it "live" over the net in real time!



DUST



FREEZE

Lookin' Good! Advanced Imaging

1920x1080 60p/50p Recording

Full HD video recording with a fast frame rate to render even fast-moving action with crystal clarity!



GC-XA2

Frame Rate (NTSC/PAL)

1080 60/50P	1080 30/25P	960 30/25P
720 60/50P	720 30/25P	480 30/25P

Still Photography up to 16M

Shoot high-resolution 8M and 16M (Ultra Resolution) stills! The fun isn't limited to videos anymore.

Burst Mode

Shoot up to 15 photos per second with five different types of bursts.

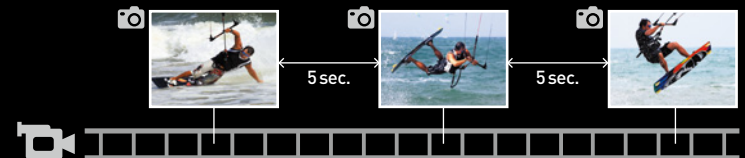
5/1s
10/1s
15/1s 15/2s 15/3s

Press SET button



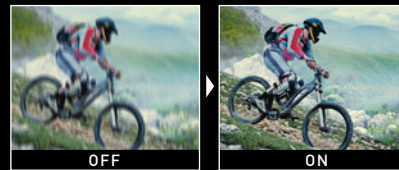
Simultaneous REC

Shoot photos automatically at 5-second intervals while you record video. Double the fun by recording both stills and video at the same time!



Improved Image Stabilizer with Gyro Sensor

The Gyro Sensor detects even the slightest camera shake, correcting everything from minute vibrations from moving vehicles to blurring from violent motion. The perfect Image Stabilizer for action scenes.



• Rolling shutter cancellation

Corrects distortion of fast-moving scenes caused by the characteristic line-by-line recording of frames with CMOS sensors.

F2.4 Super Wide Lens

Delivers bright F2.4 aperture and improved wide-angle in both HD and Full HD. Shoot even more powerful images!



----- Previous model

8M Back-illuminated CMOS Sensor

High-resolution back-illuminated sensor for solid performance in low-light environments.



Motocross (FMX) rider
DEREK GARLAND

Play Harder! Fun Functions



Freeride skier
MARIO GATTINGER

Video Effects

Add dramatic effects to powerful videos. Use four effects to create different moods. Spice up any scene and make it unique.



Sepia



Vivid



Black & White



Negative

High Speed REC

Record HD 1280 x 720 video at 120fps (NTSC) / 100fps (PAL). Perfect for capturing fast-moving action scenes. Play it back in 4x slow-motion!

Time-Lapse REC for Video

Shoot time-lapse videos at intervals of 0.2, 1, 5, 10, 30 or 60-seconds, and watch things and people go into hyper-motion!

Time-Lapse REC for Stills

Still photos can also be shot at set intervals! Capture stills automatically every 2, 5, 10, 30 or 60 seconds.

Pro surfer
PARKER COFFIN



Connect Instantly! Built-in Wi-Fi



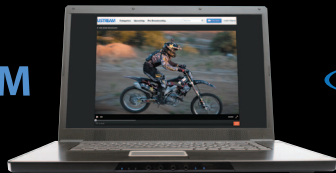
USTREAM & YouTube

With ADIXXION, Share or Stream Live without a PC! **WiFi**

USTREAM and YouTube account settings are easily set from your smartphone. The power to share is right at your fingertips!

Wi-Fi streaming to USTREAM

USTREAM



Live, streaming broadcast!



Wi-Fi upload to YouTube



YouTube

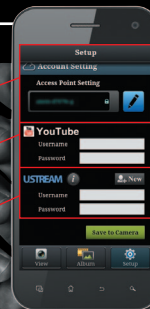
Choose from captured scenes and immediately post to YouTube



AP settings

YouTube settings

USTREAM settings



Easy setup with your smartphone!

Access point settings as well as YouTube and USTREAM account settings are available anytime and anywhere using either Android or iOS smartphones.

* USTREAM and YouTube cannot be done simultaneously.

Connect Instantly! Built-in Wi-Fi

Smartphone Link

Smart links, smart operations, advanced convenience! 

Use the GC-XA2 itself as an access point. Connect even to smartphones that don't tether.

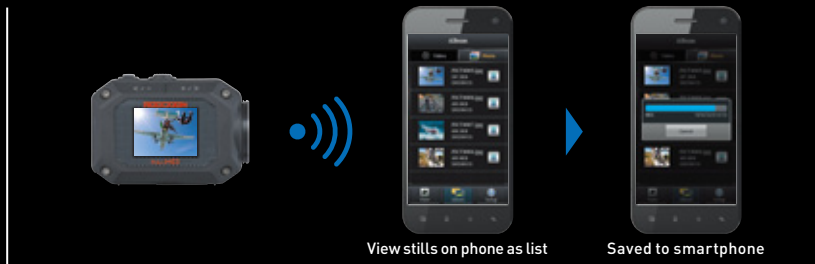
Streaming to PC/smartphone



Quad View (New app function)



Transfer stills to a smartphone



ADIXXION sync.



Android OS and iOS New App

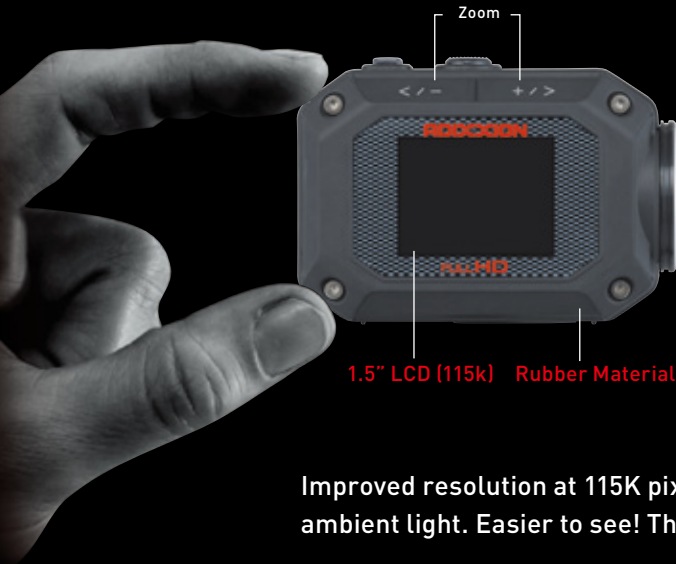
Extensive smartphone compatibility adds broad functionality to ADIXXION, including Quad View and more. Using your smartphone for setup makes pre-shooting configurations a breeze.

Design and Features

GC-XA2

Highly Mobile Design

Ultra-lightweight 135g



Improved resolution at 115K pixels. LCD brightness adjusts automatically to ambient light. Easier to see! The new Auto LCD Off function saves power.

Even if you mount the camera upside-down, it still shoots right-side-up because you can reverse the camera image's up/down orientation via the on-screen menu.

Accessories

Provided Accessories (In The Box)



GC-XA2



Wide Flexible Mount MT-FM002



Battery Pack BN-VH105



USB Cable

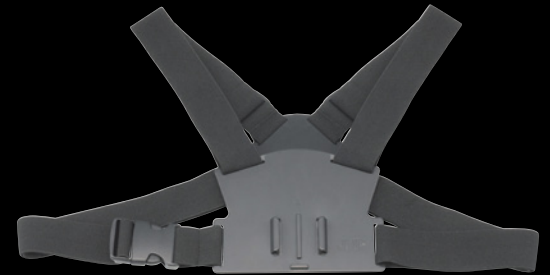
Optional Accessories



Wide Flexible Mount
MT-FM002

Adheres to flat or curved surface with supplied 3M double-sided tape.

Same as provided mount of GC-XA2.

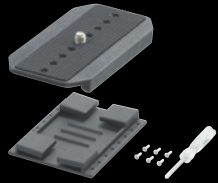


Chest Mount Harness MT-CH001

Hands-free recording from the chest outward, or pointed up towards your face.



Angle adjustable



Goggle Mount MT-GM001

- Goggle mount x1
- Screw x 6
- Screwdriver x1



Flexible Mount MT-FM001

- Ball joint unit x 1
- Base x 2



Roll Bar Mount MT-RB001

For pipes ϕ 21mm – 40mm
(7/8" – 1-5/8")



Twin Shooting Mount MT-TS001

To attach ADIXXION to
another camera.



**Suction Cup Mount
MT-SC001**

For versatile mounting.



Handle Bar Mount MT-HB001

Fits pipes ϕ 21mm – 30mm (7/8" – 1-3/16")



Battery Pack BN-VH105

For more juice when needed.
Same as provided battery
of GC-XA2.



AC Adapter AC-V17LU/AC-V10L

Charge ADIXXION battery from
AC outlet.



Lens Protector GL-LP001

For extra protection.



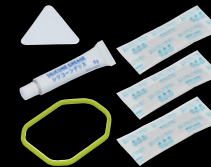
Float Strap WA-FL001

To help the camera float while
in water.



Marine Case WR-GX001

For diving even deeper
(up to 40m/130ft).



Maintenance Kit WA-MK001

Maintenance Kit for Marine Case

- Silicone Grease x1
- Drying Agent x 3
- O-ring x1



Drying Agent WA-AF001

Drying Agent (x3) for
Marine Case

Specifications

GENERAL

Dimensions (WxHxD)	74mm x 53mm x 35mm [2-15/16" x 2-1/8" x 1-7/16"]
Weight with battery and memory card	135g (0.3lbs)
Quad Proof Design	Waterproof: 5m/16.4ft, IEC Standard publication 529 IPX8 Shockproof: 2m/6.5ft, MIL-STD 810F Method 516.5-Shock Dustproof: IEC Standard publication 529 IP6X Freezeproof: -10°C/14°F

CAMERA

Image Sensor	8M Back-Illuminated CMOS
Lens Type	F2.4, Fixed focus, 160 degree
Digital Zoom	5x
Digital Image Stabilizer	Yes (EIS + Gyro)
White Balance	Auto & Manual
Exposure	Auto
Self-Timer	Yes

VIDEO / STILLS / AUDIO

Video Recording Format	MPEG-4 AVC/H.264 (MP4)
Video Recording Mode	FHD60: 1920x1080 60p (NTSC)/50p (PAL), 28Mbps VBR FHD30: 1920x1080 30p (NTSC)/25p (PAL), 12Mbps VBR HD960: 1280x960 30p (NTSC)/25p (PAL), 12.5Mbps VBR HD60: 1280x720 60p (NTSC)/50p (PAL), 12Mbps VBR HD30: 1280x720 30p (NTSC)/25p (PAL), 8Mbps VBR WVGA: 848x480 30p (NTSC)/25p (PAL), 5Mbps VBR
High Speed REC	720p 120fps (NTSC)/100fps (PAL), 4x slow motion playback
Digital Stills	JPEG, 8M / 16M (Ultra Resolution)
Burst Mode REC (Photo)	Yes (up to 15fps)
Time-Lapse REC	Video: 0.2, 1, 5, 10, 30, 60 sec. Photo: 2, 5, 10, 30, 60 sec.
Audio Format	AAC
OTHERS	
Terminals	HDMI mini, USB mini (chargeable)
LCD	1.5" color
Wi-Fi Function	Yes

Recording times for each media

Mode	SDXC/SDHC Card			
	128GB	64GB	32GB	16GB
FHD60	10hr	5hr	2hr 30min	1hr 10min
FHD30	23hr 40min	11hr 50min	5hr 50min	2hr 50min
HD960	22hr 20min	11hr 10min	5hr 30min	2hr 40min
HD60	23hr 40min	11hr 50min	5hr 50min	2hr 50min
HD30	35hr 30min	17hr 40min	8hr 50min	4hr 20min
WVGA	56hr 30min	28hr 10min	14hr	7hr

Figures are approximate.

Battery life

Mode	Continuous Recording Time [Wi-Fi off]
FHD60	1hr 25min
FHD30	1hr 50min
HD960	1hr 55min
HD60	1hr 45min
HD30	2hr 5min
WVGA	2hr 5min

Figures are approximate.

http://www.jvc.net/adixxion_xa2c/



Design and specifications subject to change without notice. The photos of the products featured on this catalog may not be of actual products that are available in your country. It should be noted that it may be unlawful to re-record pre-recorded tapes, records, or discs without the consent of the owner of copyright in the sound or video recording, broadcast or cable program and in any literary, dramatic, musical, or artistic work embodied therein. Microsoft® and Windows® are either registered trademarks or trademarks of Microsoft Corporation in the United States and/or other countries. YouTube and the YouTube logo are trademarks and/or registered trademarks of YouTube LLC. The Wi-Fi Logo is a certification mark of the Wi-Fi Alliance. HDMI, the HDMI logo and High-Definition Multimedia Interface are trademarks or registered trademarks of HDMI Licensing LLC. The SD, SDHC, and SDXC logos are trademarks of the SD Card Association. QR Code is registered trademark of DENSO WAVE INCORPORATED. All brand names are trademarks, registered trademarks, or trade names of their respective holders. Screen images and print samples on this catalog are simulated unless otherwise specified.

Copyright© 2013, JVC KENWOOD Corporation

JVC

AVAILABLE AT