



GOLD SERIES

2" Insulated Steel Sandwich Doors

8200

Defined Classic Raised Panel
with woodgrain textured surface



8201/8202

Flush Design Panel
with woodgrain textured surface



8203

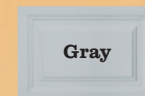
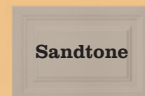
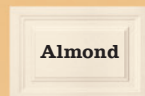
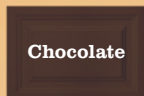
Defined Classic Raised Long Ranch Panel
with woodgrain textured surface



Model 8203 Defined Classic Raised Long Ranch Panel shown in White with optional Sunset 603 Decorative Insert Series Windows

- Steel sandwich construction (steel + insulation + steel) for excellent durability
- 2" foamed-in-place polyurethane insulation with thermal break for best energy efficiency, R-value 17.2
- Tongue-and-groove joints for superior weather sealing
- Prepainted steel for virtually maintenance-free durability
- Six finish painted colors to complement your home
- A variety of windows to enhance your home
- Limited lifetime paint warranty for peace of mind

Featuring 2" thick CFC-free foamed-in-place polyurethane insulation pressure bonded between two layers of steel – these premium doors provide energy-efficiency, durability and security. IDEAL Door 2" insulated steel sandwich doors are perfect for all climates, keeping your garage cooler in the summer and warmer in the winter. Choose from classic raised panel, ranch panel, or flush designs to add style and value to any home.



Due to printing process, colors may vary. Please request an accurate color chip.



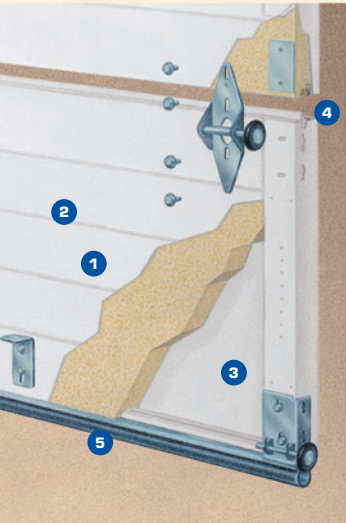
Model 8200 Defined Classic Raised Panel shown in Gray with optional Colonial 509 Decorative Insert Series Windows



Model 8201 Flush Panel shown in Gray

Models 8200, 8201/8202, 8203

Features



- 1 Steel sandwich construction**
2" thick polyurethane insulation with a 17.2 R-value is pressure-bonded between two sheets of steel, providing exceptional strength, durability, maximum insulation value and quiet operation.
- 2 Virtually maintenance-free**
Interior surface is finish painted white. Exterior panels are available in White, Almond, Chocolate, Sandtone, Gray, or Hunter Green, or can be painted to match your home.
- 3 Surface texture**
Each exterior panel style features an attractive woodgrain texture. Inside steel skin has stucco texture with pencil ribs.
- 4 Tongue-and-groove joints with a foam tape filled thermal break**
Tongue-and-groove joints provide a superior weather-resistant seal at each section joint and help ensure best door alignment.
- 5 Bottom weatherseal system**
Bottom vinyl weatherseal in rust-free aluminum retainer helps seal irregular floors against the elements.

Paint System

Steel skins are protected from the environment through the use of a tough, layered coating system, starting with a layer of hot-dipped galvanizing and a protective metal oxide pretreatment, followed by a baked-on polyurethane primer and a tough, weather-resistant polyester top coat, creating a virtually maintenance-free surface.



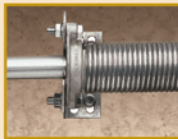
Patented Safe-T-Bracket®

Bottom bracket cannot, under normal circumstances, be removed while door is under tension.



Galvanized Torsion Springs

Durable, corrosion-resistant galvanized torsion springs function for up to a 50% longer life and present a more attractive, polished appearance.



Greater Energy Efficiency

Foam tape thermal break separates the interior from the exterior skin to improve energy efficiency and comfort.



A Broad Selection of Sizes

IDEAL Doors range from 6'0" to 12'0" high and 6'2" to 20'0" wide. Consult your IDEAL Door dealer for size options.

Distributed By

Designer Etchings® Windows

Models 8200, 8201



Models 8200*, 8201, 8203

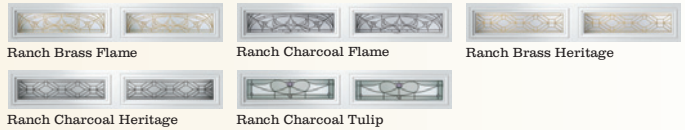


Designer Classics Windows

Models 8200, 8201

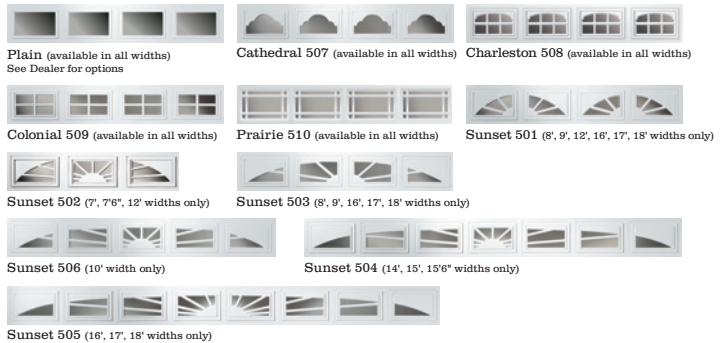


Models 8200*, 8201, 8203



Decorative Insert Series Windows

Models 8200, 8201



Models 8200*, 8201, 8203

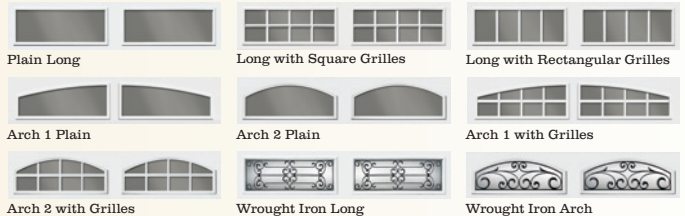


Expressions® Series Windows

Models 8200, 8201/8202, 8203



Models 8200*, 8201/8202, 8203



Expressions Series Windows are available in White, Almond and Sandtone. Not available on 6'0", 7'6" and 9'0" high doors.

*Panel emboss may not align on long window with short panels. Some size limitations apply. See your IDEAL Door dealer for more details.



In the interest of better quality and value, we are continually improving and updating our products. Consequently, photos, illustrations and available options may sometimes differ from previous models.

For more information about this and other IDEAL Door® products, visit www.idealdoors.com. IDEAL Door® is a Brand of Clopay Building Products. © Clopay Building Products Company, Inc. 2008, A Griffon Company, Inc. Printed in U.S.A.