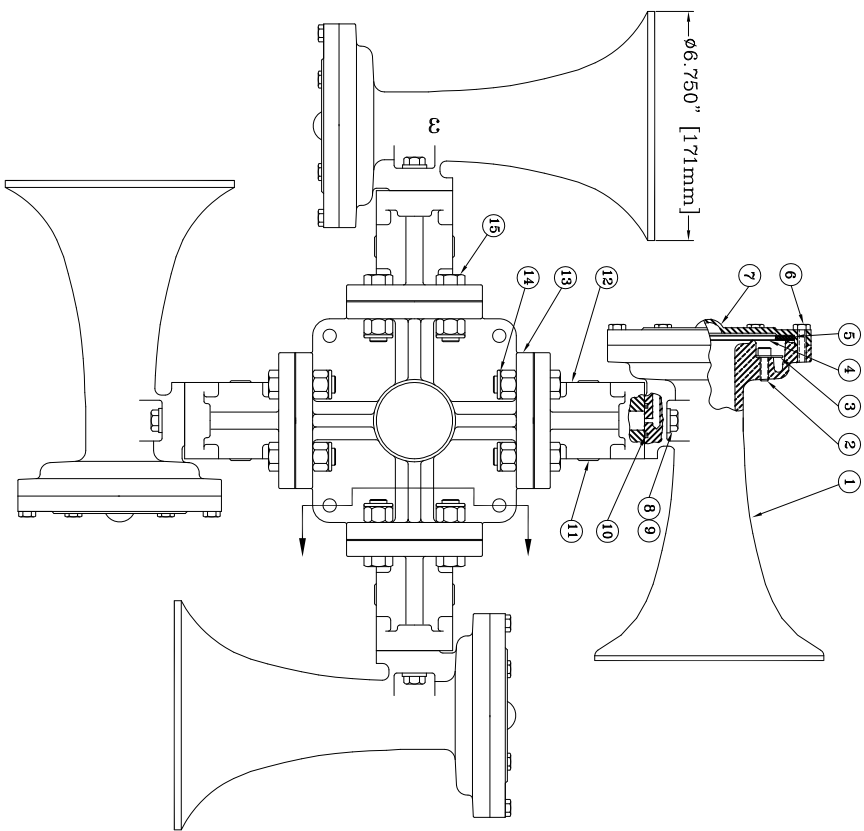


* RECOMMENDED SPARE PARTS

REF PART	DESCRIPTION	MATERIAL	SPECIFICATION	QTY
1	BELL BODY No. 3	DIE CAST ALUMINUM	ASTM-B26-65	4
2	SOCKET HD. CAP SCREW	STAINLESS STEEL	ASTM F837	12
3	DIPFUSER	STAINLESS STEEL	UNS-S30400	4
4	DIAPHRAGM DISC	STAINLESS STEEL	UNS-S30400	8
* 5	CUSHION RING	SILICONE RUBBER	ASTM D2000	4
6	HEX HEAD CAP SCREW	STAINLESS STEEL	ASTM F593C	24
7	DIAPHRAGM CAP	DIE CAST ALUMINUM	ASTM-B26-65	4
8	HEX HEAD CAP SCREW	STAINLESS STEEL	ASTM F593C	8
9	LOCKWASHER	STAINLESS STEEL	ASA B27.1	8
10	O RING	NEOPRENE	ASTM D2000	4
11	PIPE PLUG 3/8" N.P.T.	ALLOY STEEL	ASA B21	8
12	BASE-SINGLE TONE	CAST ALUMINUM	UNS A03562	4
13	FOUR DIRECTIONAL BASE	CAST ALUMINUM	UNS A03562	1
14	NYLOCK NUT	STAINLESS STEEL	ASTM F594	16
15	HEX HEAD CAP SCREW	STAINLESS STEEL	ASTM F593C	16
16	PIPE BUSHING	ALLOY STEEL	ASA B18.8	1



FUNDAMENTAL FREQUENCY: 470 HZ

CONFIDENTIAL

INFORMATION CONTAINED HEREIN IS CONFIDENTIAL. IT IS THE PROPERTY OF KAHLBERG INDUSTRIES INC.. IT IS TO BE USED SOLELY FOR THE PURPOSE PROVIDED AND IT IS NOT TO BE DISCLOSED TO OTHERS WITHOUT THE PRIOR WRITTEN CONSENT OF KAHLBERG INDUSTRIES INCORPORATED.

KAHLBERG INDUSTRIES INC.

TWO RIVERS, WISCONSIN 54241

Kahlberg
OUTLINE DIMENSIONS / PARTS LIST
MODEL K4-3 AIR HORN

CAGE: 75214

Copyright Kahlberg Ind. Inc. 2010

DR.	DATE	CKD.	SCALE	DRWG. NO.	REV.
ZJN	03/19/13	EMK	N.T.S.	30267	

REV.	BY	DATE	DESCRIPTION	APP'D.