

Mouse Monoclonal to FGG

Order Information

Catalog#	Size/Concentration	Storage
30267	100µl	4°C; -20°C for long term storage

Call 1-510-860-4615
Email Info@ProMab.com
Web www.ProMab.com

Description

The protein encoded by this gene is the gamma component of fibrinogen, a blood-borne glycoprotein comprised of three pairs of nonidentical polypeptide chains. Following vascular injury, fibrinogen is cleaved by thrombin to form fibrin which is the most abundant component of blood clots. In addition, various cleavage products of fibrinogen and fibrin regulate cell adhesion and spreading, display vasoconstrictor and chemotactic activities, and are mitogens for several cell types. Mutations in this gene lead to several disorders, including dysfibrinogenemia, hypofibrinogenemia and thrombophilia. Alternative splicing results in two transcript variants encoding different isoforms.

Specification

Entrez Gene ID	2266
Aliases	FGG
Clone#	5A6
MW	52kDa
Host/Isotype	Mouse IgG2b
Species Reactivity	Human
Immunogen	Purified recombinant fragment of human FGG expressed in E. Coli.
Formulation	Ascitic fluid containing 0.03% sodium azide.

Application

WB	1/500 - 1/2000
IHC	N/A
ICC	1/200 - 1/1000
FCM	N/A
ELISA	1/10000

References

- Biochemistry. 2009 Sep 15;48 (36):8656-63.
- Blood. 2009 Nov 5;114 (19):3994-4001.

Protocol

WB - www.promab.com/protocol/wb.html
IHC - www.promab.com/protocol/ihc.html
ICC - www.promab.com/protocol/icc.html
FCM - www.promab.com/protocol/hcm.html

Antigen Sequence is available upon request.

Products and Services

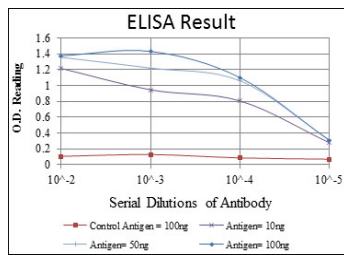
- Mouse Monoclonal Antibody
- Rat Monoclonal Antibody
- Human Antibody
- Hybridoma Sequencing
- Polyclonal Antibody

For Research Only

Applications Key: WB - Western Blot | IHC - Immunohistochemistry | ICC - Immunocytochemistry | FCM - Flow Cytometry | ELISA - Enzyme-linked Immunosorbent Assay

#30267

Mouse Monoclonal to FG G



Red: Control Antigen (100ng)
 Purple: Antigen (10ng)
 Green: Antigen (50ng)
 Blue: Antigen (100ng)

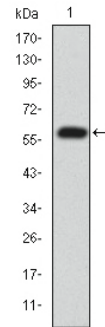


Figure 1: Western blot analysis using FG G mAb against human FG G (AA: 210-437) recombinant protein. (Expected MW is 51.5 kDa)

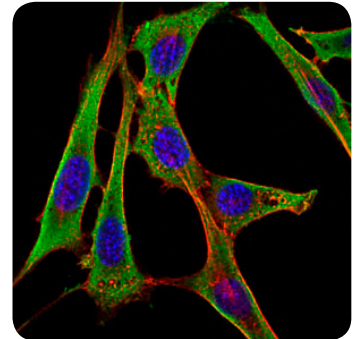


Figure 2: Immunofluorescence analysis of NIH/3T3 cells using FG G mouse mAb (green). Blue: DRAQ5 fluorescent DNA dye. Red: Actin filaments have been labeled with Alexa Fluor-555 phalloidin.

For Research Only

Applications Key: **WB** - Western Blot | **IHC** - Immunohistochemistry | **ICC** - Immunocytochemistry | **FCM** - Flow Cytometry | **ELISA** - Enzyme-linked Immunosorbent Assay

#30267