

## IMATION ENTERPRISE S250 & D250

powered by  
**IRONKEY™**



### BUILT TO BE THE WORLD'S MOST SECURE FLASH DRIVES

Imation Enterprise S250 and D250 flash drives are powered by IronKey™ and designed specifically for enterprise, government and military customers that require exceptional security, performance and manageability from their mobile storage devices. Built from the ground up to be the world's most secure flash drives, Imation Enterprise drives meet the stringent Security Level 3 requirements of the FIPS 140-2 standard, are outfitted with strong hardware encryption, and use the algorithm approved by the DOD for storing Top Secret data. A ruggedized, waterproof\* metal chassis helps protect S250 and D250 drives from the elements. Active anti-malware helps prevent USB threats from spreading. And an intuitive user console makes Imation Enterprise drives as simple as secure allows.

### CENTRALIZED, ENTERPRISE-CLASS ADMINISTRATION

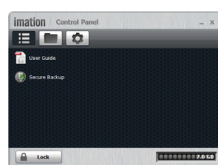
Use an intuitive, secure online management console to apply security policies to thousands of Imation Enterprise flash drives.

- Enforce device-specific policies, including password strength and retry limits, onboard portable applications, and where devices are allowed to be used.
- Mitigate risks of data loss by remotely disabling or detonating lost and stolen Enterprise drives.
- Control where Imation Enterprise drives may be used based on IP address or range.
- Securely recover access to user devices, remotely force password changes, and recommission devices that are no longer in use.
- Manage access to software pre-loaded onto drives, including a secure portable version of Mozilla Firefox, Imation Identity Manager and Imation Secure Sessions Service.

### ADMIN CONSOLE



### CONTROL PANEL



USB 2.0

### IMATION ENTERPRISE S250 SERIES

With premium quality dual-channel SLC flash memory, which delivers file read performance of up to 31MB/second and lasts years longer than drives with traditional memory.

### IMATION ENTERPRISE D250 SERIES

D250 drives balance performance and value for users who don't require constant access to data. Same great security as the S250, with dual-channel MLC flash memory for reading files at up to 29MB/second.

### BENEFITS

Simplify compliance by safeguarding sensitive data with military-grade security and enforcing policies worldwide

Reduce op-ex and admin costs by centrally managing device access and usage

Equip users to safely work anywhere by storing and carrying critical files, applications, and virtual desktops

Mitigate risks of data loss by remotely disabling or detonating stolen devices

Protect against the spread of USB malware with the onboard Anti-Malware Scanner and remotely configurable read-only mode

Combine secure data storage with strong authentication into one device by including RSA SecurID

Reduce help desk calls with self-service password reset and an intuitive user control panel available in eight languages

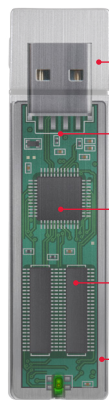
Access data on Windows, Mac or Linux with no software or drivers to install

No Windows administrative privileges required

No software or drivers to install

\*Products meet (MIL-STD-810F)

## IMATION ENTERPRISE S250 & D250



### FEATURES

- Rugged Metal Casing**  
Waterproof and Tamper-Resistant
- Tamper-Resistant**  
FIPS Validated 140-2 Level 3\*
- Always-On Data Encryption**  
AES 256-Bit Hardware Encryption
- High-Performance Memory**  
Dual-channel SLC or MLC Flash
- Portable Applications**  
Encrypted Backup

### SAFER, HARDWARE-BASED ENCRYPTION

Flash storage drives that rely on software-based encryption are vulnerable to cold-boot and malware attacks because they export AES encryption keys to the host PC. Imation drives instead use the Imation Cryptochip, a proven hardware-based solution that keeps key management on the Imation drive and off the host PC. After users plug in an Imation Enterprise S250 or D250 drive, they must first authenticate with a password. Only then does Imation Cryptochip enable the encryption keys that unlock data and applications. And with the Imation Cryptochip handling encryption, PC performance doesn't suffer.

### DESIGNED TO FOIL MALWARE AND THIEVES

Imation's hardware-based encryption and password verification is always on and can't be disabled by malware or a careless user. Self-defending Imation Enterprise drives also provide active protections against the spread of USB worms, crimeware and other malicious code. And if a thief enters 10 incorrect passwords in an attempt to break into the drive, the Cryptochip will initiate a self-destruct sequence that securely destroys the data and the device.

### BUILT TO LAST

Shielded in a solid, tamper-resistant and waterproof metal casing, Imation drives are built to survive years of wear and tear.

Imation Enterprise S Series	SKU
8GB S250	D2-S250-S08-4FIPS
16GB S250	D2-S250-S16-4FIPS

Imation Enterprise D Series	SKU
2GB D250	D2-D250-B02-4FIPS
4GB D250	D2-D250-B04-4FIPS
8GB D250	D2-D250-B08-4FIPS
16GB D250	D2-D250-B16-4FIPS
32GB D250	D2-D250-B32-4FIPS

### TECHNICAL SPECS

#### CAPACITIES

S250: 8GB, 16GB  
D250: 2GB, 4GB, 8GB, 16GB, 32GB

#### SPEED

S250: Up to 31MB/sec read; Up to 24MB/sec write  
D250: Up to 29MB/sec read; Up to 13MB/sec write

#### MEMORY

S250: Dual-channel SLC Flash  
D250: Dual-channel MLC Flash

#### DIMENSIONS

75mm X 19mm X 9mm

#### WEIGHT

.9 oz (25 grams)

#### WATERPROOF

MIL-STD-810F

#### TEMPERATURE

Operating: 0°C, +70°C  
Storage: -40°C, +85°C

#### HARDWARE

USB 2.0 high speed

#### CROSS PLATFORM

Windows XP SP2+, Vista, Windows 7,  
Macintosh® OS X 10.5+  
Linux 2.6+

#### LANGUAGES

English, German, French, Spanish, Japanese,  
Korean, Simplified Chinese, Traditional Chinese

#### HARDWARE ENCRYPTION

Data: AES Cipher-Block Chained mode  
PKI: 2048-bit RSA  
Hashing: 256-bit SHA

\*Cryptographic Module Certification #1734

AES (Cert #1874), DRBG (Cert #152), HMAC (Cert #1119),  
RNG (Cert #774), RSA (Cert #955), SHS (Cert #1647),  
Triple-DES (Cert #965)

### SALES CONTACTS

#### WEBSITE

www.imation.com

#### US AND CANADA

securitysales@imation.com  
+1 888 435 7682 or +1 408 879 4300

#### EUROPE

emeasecuritysales@imation.com  
+44 (0)1344 402 013

#### ASIA PACIFIC

apacsecuritysales@imation.com  
+65 6499 7199