

FCC Statement

This equipment has been tested and found to comply with the limits for a Class B digital device, pursuant to Part 15 of the FCC Rules. These limits are designed to provide reasonable protection against harmful interference in a residential setting. This product generates, uses, and can radiate radio frequency energy and, if not installed and used as directed, it may cause harmful interference to radio communications. Although this product complies with the limits for a Class B digital device, there is no guarantee that interference will not occur in a particular installation.

CE Compliance

This device has been tested and found to comply with the following European Union directives: Electromagnetic Capability (89/336/EMC), Low Voltage (73/23/EEC) and R&TTE (1999/5/EC).

Limited Warranty

WE'RE HERE TO HELP YOU! NEED ASSISTANCE SETTING UP THIS PRODUCT?

- Make sure you:
1. Use the live chat at www.iogear.com to try and solve any issues you may be having with the product
 2. Visit the Tech Info Library/FAQ on www.iogear.com (under the Support tab)
 3. Call the tech support line at 1-866-946-4327 (U.S. only) or 1-949-453-8782

Warranty Information

This product carries a 3 Year Limited Warranty. For the terms and conditions of this warranty, please go to <http://www.iogear.com/support/warranty> or call 1-866-946-4327

Register online at <http://www.iogear.com/register>

Important Product Information

Product Model _____
Serial Number _____

Contact

IOGEAR Inc.
Address: 19641 Da Vinci, Foothill Ranch, CA 92618 USA
Toll Free: 866-9-IOGEAR
Phone: 949-453-8782
Web site: www.iogear.com
Email: support@iogear.com

About Us

- FUN**
IOGEAR offers connectivity solutions that are innovative, fun, and stylish, helping people enjoy daily life using our high technology products.
- GREEN**
IOGEAR is an environmentally conscious company that emphasizes the importance of conserving natural resources. The use of our technology solutions helps reduce electronic waste.

Quick Start Guide

Long Range 2.4GHz Wireless Keyboard and Mouse Combo

© 2011 IOGEAR®

GKM552R
QT189

Package Contents

- 1 x Wireless Keyboard
- 1 x Wireless Optical Mouse
- 1 x USB Receiver
- 1 x AAA Battery for Keyboard
- 2 x AA Battery for Mouse
- 1 x Quick Start Guide
- 1 x Warranty Card

Requirements

- Hardware Requirements**
- Available USB port
 - IBM-compatible PC or Mac

- Operating System**
- Windows XP (32-bit / 64-bit)
 - Windows Vista (32-bit / 64-bit)
 - Windows 7 (32-bit / 64-bit)
 - Mac OS X v10.3 or later*

* Some function keys may not work

Plug & Play

After the batteries and the USB receiver are installed, the keyboard and mouse can be used. No software is needed!

Battery and Hardware Installation

Keyboard Battery Installation

1. Open the battery cover on the back of the keyboard
2. Insert the included AAA battery as the diagram on the battery tray indicates
3. Close the battery cover

Mouse Battery Installation

1. Open the battery cover on the bottom of the mouse
2. Insert one, or two of the included AA batteries as the diagram on the battery tray indicates*
3. Close the battery cover

USB Receiver Installation

1. Plug the USB receiver into an available USB port on your computer
2. Your Operating System will start to install the device driver automatically
3. No additional software is needed. Enjoy your new keyboard and mouse!

* Weight Control Energy Management

The mouse can be used with one or two AA batteries. Users can adjust the mouse weight by inserting either one or two AA batteries. Using two batteries doubles the battery life to 1 year with normal use. Battery performance may vary depending on usage.

Customize Mouse DPI

The mouse is equipped with a customizable DPI switch. The default setting is 1500 DPI. Simply adjust the DPI sensitivity to your liking by pressing the + / - buttons on the mouse. Pressing the + / - buttons will adjust LED to Red, Green, or Orange.

Each color represents a different DPI value:

Red: 1000 DPI
Green: 1500 DPI
Orange: 2000 DPI

Overview

Start Here!

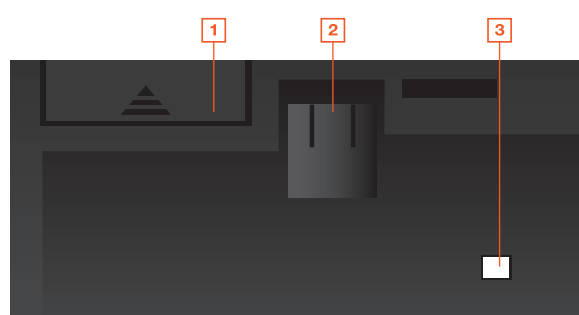
Keyboard – Front View

1. Volume Down
2. Volume Up
3. Low Battery Indicator



Keyboard – Back View

1. Battery Cover
2. Foldable Legs – allow user to adjust the angle of the keyboard
3. Drain Holes



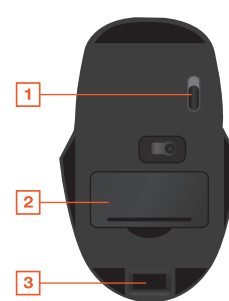
Mouse – Front View

1. Left Click
2. Right Click
3. Low Battery / DPI Indicator
4. Scroll Wheel (third button)
5. Back Button
6. Forward Button
7. Increase DPI Button
8. Decrease DPI Button



Mouse – Back View

1. On / Off Switch
2. Battery Cover
3. USB Receiver Storage

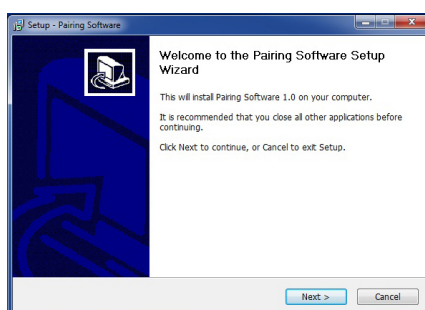


Troubleshooting

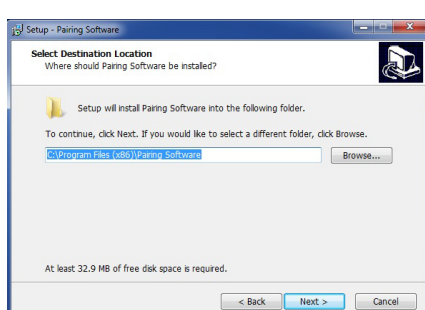
The 2.4 GHz Wireless Combo (keyboard, mouse, and USB receiver) is pre-paired. Therefore, users can use the Wireless Combo set right out of the box. However, in very few cases, the keyboard and mouse will not connect to the USB receiver. If your Wireless Combo will not pair with the USB receiver, you will need to download the Pairing Software tool to your computer from the IOGEAR Support website @ <http://www.iogear.com/support/dm>. Use the model name GKM552R. (Remember where you save the downloaded file on your computer so you can easily access it to begin installation)

Follow the below steps to install the Pairing Software.

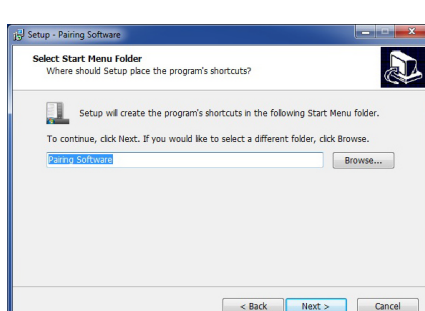
1. Unzip / Extract the downloaded file you saved to your computer. It is titled Setup.exe.
2. Double click on the Setup.exe icon to begin Pairing Software installation
3. Click Next



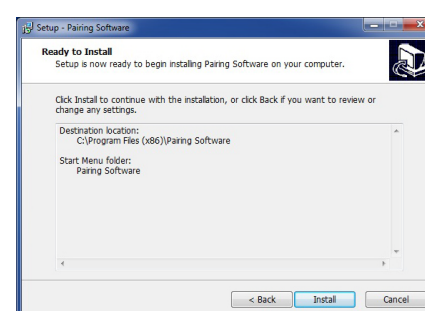
4. Choose the desired location that the software will be installed, then click Next



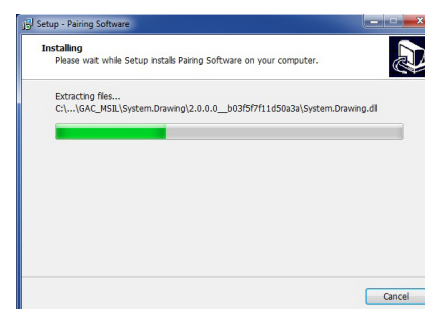
5. Click Next



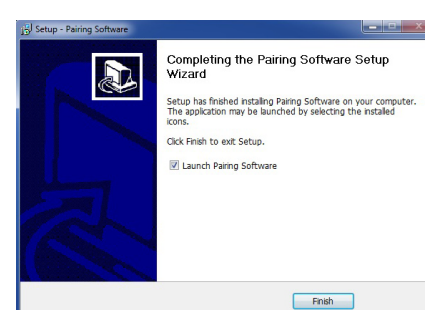
6. Make sure the software location and the shortcut name are correct, then click Install



7. The software will install to the desired location automatically

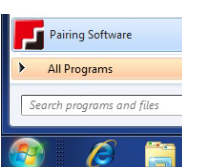


8. Click Finish to complete the installation



Follow the steps below to pair the keyboard, mouse, and USB receiver

1. Take the batteries out of your keyboard and mouse. Disconnect the USB receiver from your computer's USB port. Desktop users will need an additional USB/PS2 mouse to be connected to the computer for the pairing process.
2. Click on the Pairing Software shortcut in your Start Menu. If the Pairing Software is not on your Start Menu, conduct a program search using the words, Pairing Software. Once located, double click on Pairing Software
3. Plug the USB receiver into your computer's available USB port. Click PAIRING on the pairing program.



4. Install the batteries into your keyboard and mouse and follow the instructions on the screen. Click Finish.



5. Your keyboard and mouse should be reconnected to the USB receiver *

* If pairing is not achieved, please contact our IOGEAR support team.

