



1042418 Ft Lee Express CL6

This schematic is representation of the top selling SKU's in each category based on store specific scan data as well as syndicated data. Each segment is given a percent of available space equal to that segment's percent of total store level category sales. Items included on these POGS were given a designation of "CORE", "APPROVED", and "NEW APPROVED". These item designations were determined and reviewed by AAFES Headquarters. Upon completion of the reset, please fill in the attendance section and make note of any changes that were made. Please KEEP for your records.

Attendance

Name	Company
_____	_____
_____	_____
_____	_____
_____	_____
_____	_____
_____	_____
_____	_____
_____	_____
_____	_____

Assortment Changes

Please complete this attendance sheet and KEEP for your records. You can also send any communication directly to dsprabary@eisdallas.com.

EIS
Space Management
8220 Elmbrook Dr
Dallas, TX 75247
214-638-9462 fax
dsprabary@eisdallas.com



1042418 Ft Lee Express CL6

VENDOR COOLERS:

MONSTER: 1DOOR

Field Notes



1042418 Ft Lee Express CL6

Best Practices for Cooler Resets

PepsiCo is the Reset Captain. The PepsiCo Rep should contact the General Manager to schedule the reset dates and times per store. The store manager should place a sign in the receiving area and contact the appropriate suppliers once you have agreed on a specific date and time.

Verify the dates of the proposed reset. Notify all shift managers, night managers, receivers and stockers. Stores should not stock product prior to the reset. This is especially important when the flow of the coolers is changing.

Please contact PepsiCo POG Support with questions.

What you need to bring:

- 2 Phillips screwdrivers
- Pliers
- Hammer
- Extra wing nuts or screws
- Sharp knife for cutting glides
- Camera

Cooler Reset Procedures

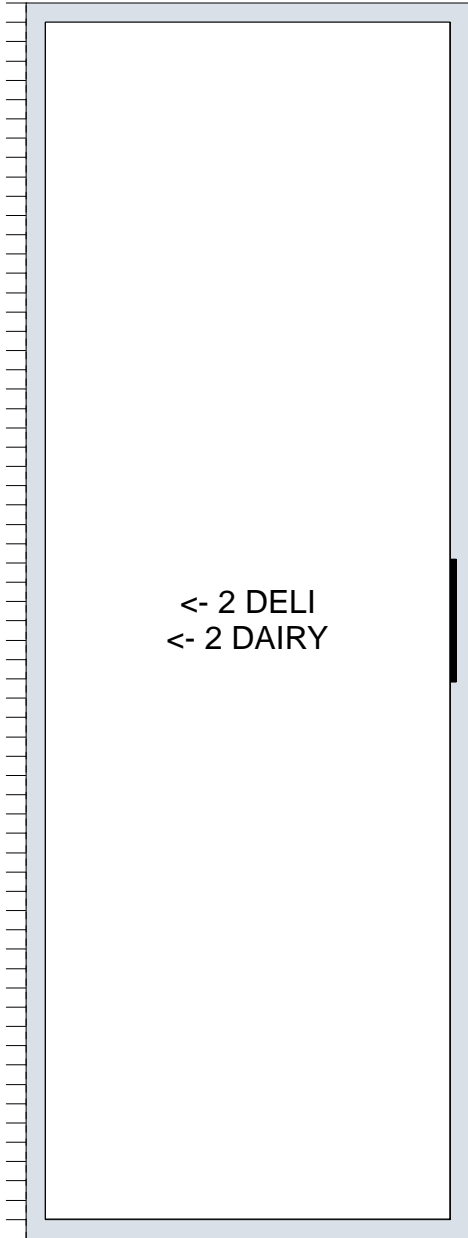
1. On the day before the reset, go to the store that you will be resetting. Bring a color copy of the POG.
2. Ensure that all the proper equipment necessary to do the reset is available (i.e. rails, glides or hardware). Pack your vehicle with the tools needed for the next day reset.
3. On the day of the reset, ensure that you have your own color copy of the POG. Make sure to take before pictures of all of the cooler doors.
4. Start to empty the doors that are assigned to you and remove any additional products that will not remain in the set.
5. Adjust the shelves to accommodate tall products before adjusting rails.
 - First, adjust rails in the front utilizing products for size.
 - Second, adjust the back of the rail ensuring that that product will glide smoothly to the front.
 - Start at the left side and adjust accordingly to the number of facings allowed in the POG.
 - If glides are being used, make sure they are cut or expanded to the length of the shelves so that products can be stocked easily from the back.
6. Before replacing product, please clean all shelves, glides and/or railings.
7. When the reset has been completed, re-label the front and the back of the shelf spaces.
8. Place existing product in the cooler behind its assigned space to ensure ease of stocking.
9. Take pictures of the doors after the reset is completed.
10. Report any issues or changes to the Manager on duty.
11. Please communicate any changes to pogsupport@eisdallas.com.
12. Leave a copy of the POG at the store to help vendors maintain the reset integrity.
13. Post copy of the POG in Manager's office for continued reference.



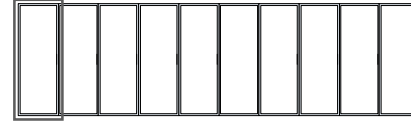
1042418 Fort Lee Class 6 Cold



1042418 Fort Lee Class 6 Cold

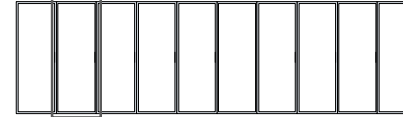


Door: 1 of 10



1042418 Fort Lee Class 6 Cold

Door: 2 of 10



Segment: 2		Shelf: 1		w: 23.00 in		d: 48.00 in				
Location	Name	UPC	CRC	Facings	Capacity	DOS	ITEM STATUS	TYPE		
1	PERRIER PLAIN SPRKLING WATER 16.9Z	074780000703	1518854	1	16	0	APPROVED			
2	DASANI PLAIN WATER 20Z	049000009774	8175152	1	17	9.1	CORE			
3	AQUAFINA OTHER 20Z	012000001598	4639480	1	16	5.5	CORE			
4	NESTLE PURE LIFE WATER 20 OZ	068274443114	5133156	2	32	2.7	CORE	WHSE		
5	DEER PARK SPRING 20Z	082657008523	1757127	1	16	0	APPROVED			
6	FIJI NATURAL ARTESIAN 16.9Z	632565000012	3457362	1	18	20.7	CORE			
Segment: 2		Shelf: 10		w: 23.00 in		d: 48.00 in				
Location	Name	UPC	CRC	Facings	Capacity	DOS	ITEM STATUS	TYPE		
7	GLACEAU SMART WATER OTHER 33.8Z	786162338006	1675031	4	56	3.5	CORE			
8	GLACEAU SMART WATER OTHER 24Z	786162001511	3306354	2	32	3.4	CORE			
9	PROPEL ELTRLYTE 750ML	052000100969	7171136	1	16	0	NEW APPROVED			
Segment: 2		Shelf: 19		w: 23.00 in		d: 48.00 in				
Location	Name	UPC	CRC	Facings	Capacity	DOS	ITEM STATUS	TYPE		
10	NESTLE PURE LIFE WATER 1 LITER	068274644122	2427210	3	45	4.7	CORE	WHSE		
11	DEER PARK SPRING 33.8Z	082657500676	2167302	1	14	0	APPROVED			
12	NESTLE PURE LIFE WATER 700ML	068274543319	5132621	2	32	4.5	CORE	WHSE		
13	DEER PARK SPRING 23.7Z	082657543338	2167303	1	16	0	APPROVED			
Segment: 2		Shelf: 28		w: 23.00 in		d: 48.00 in				
Location	Name	UPC	CRC	Facings	Capacity	DOS	ITEM STATUS	TYPE		
14	FIJI NATURAL ARTESIAN 33.8Z	632565000029	4745183	2	26	4.4	CORE			
15	AQUAFINA OTHER 33.8Z	012000001574	8903841	2	28	5.6	CORE			
16	DASANI OTHER 33.8Z	049000026566	8175187	2	26	4.0	CORE			
Segment: 2		Shelf: 37		w: 23.00 in		d: 48.00 in				
Location	Name	UPC	CRC	Facings	Capacity	DOS	ITEM STATUS	TYPE		
17	NESTLE PURE LIFE PURIFIED 128Z	068274346613	2199673	2	16	5.0	CORE	WHSE		
18	GLACEAU SMART WATER OTHER 50.7Z	786162507006	1757763	3	39	0	CORE			

1042418 Fort Lee Class 6 Cold

Door: 3 of 10



Segment: 3		Shelf: 2		w: 23.00 in		d: 48.00 in					
Location	Name	UPC	CRC	Facings	Capacity	DOS	ITEM STATUS	TYPE			
19	VITA COCO COCONUT WATER 17Z	898999010007	4508483	1	16	15.1	APPROVED				
20	VITA COCO COCONUT WATER PINEAPPLE ...	898999030005	4245341	1	16	21.9	APPROVED				
21	GLACEAU VITAMINWATER EN TRP CTRS 20Z	786162080004	1415702	1	16	16.0	APPROVED				
22	GLACEAU VITAMINWATER ESNTL ORG 20Z	786162040008	1330981	1	16	23.9	APPROVED				
23	GLACEAU VITAMINWATER PWR-C DRGNFR...	786162010001	9915919	2	32	23.3	APPROVED				
24	GLACEAU VITAMINWATER XXX ACAI BLU P...	786162150004	2384966	1	16	13.0	APPROVED				
Segment: 3		Shelf: 11		w: 23.00 in		d: 48.00 in					
Location	Name	UPC	CRC	Facings	Capacity	DOS	ITEM STATUS	TYPE			
25	CALYPSO OCEAN BLUE 20OZ	079581995241	4875199	1	16	10.1	APPROVED				
26	SPARKLING ICE LEMONADE 17OZ	016571940355	5214365	1	19	0	CORE				
27	SPARKLING ICE KIWI STRAWBERRY 17OZ	016571910327	3433912	1	19	11.0	APPROVED				
28	SPARKLING ICE ORANGE MANGO 17OZ	016571910310	5307107	1	19	12.7	APPROVED				
29	SPARKLING ICE COCONUT PINEAPPLE 17OZ	016571940331	5214403	1	19	20.2	CORE				
30	SPARKLING ICE PEACH NECTARINE 17OZ	016571940348	6263525	1	19	0	CORE				
31	SPARKLING ICE STRAWBERRY LEMONADE ...	016571950293	6326175	1	19	0	CORE				
32	SPARKLING ICE BLACK RASPBERRY 17OZ	016571910303	5074587	1	19	10.2	CORE				
Segment: 3		Shelf: 20		w: 23.00 in		d: 48.00 in					
Location	Name	UPC	CRC	Facings	Capacity	DOS	ITEM STATUS	TYPE			
33	POWERADE GRAPE 32Z	049000045239	1436878	1	13	7.8	CORE				
34	POWERADE MELON 32OZ	049000052343	2145715	1	13	5.4	CORE				
35	POWERADE ORANGE 32Z	049000045796	1564576	1	13	8.3	CORE				
36	POWERADE FRUIT PUNCH 32Z	049000045741	1564233	1	13	5.8	CORE				
37	POWERADE MOUNTAIN BLAST 32Z	049000045758	1564341	2	26	8.9	CORE				
Segment: 3		Shelf: 29		w: 23.00 in		d: 48.00 in					
Location	Name	UPC	CRC	Facings	Capacity	DOS	ITEM STATUS	TYPE			
38	POWERADE ZERO MIXED BERRY 32Z	049000050721	2898773	1	13	7.3	APPROVED				
39	POWERADE LEMONADE	049000065589	7169778	1	13	0	NEW APPROVED				
40	POWERADE ION WHT CHERRY 32Z	049000054569	4246009	1	13	5.5	CORE				
41	POWERADE TROPICAL MANGO 32Z	049000064186	6560553	1	13	11.4	APPROVED				
42	POWERADE STRAWBERRY LEMONADE 32Z	049000050349	2818973	2	26	11.5	CORE				
Segment: 3		Shelf: 38		w: 23.00 in		d: 48.00 in					
Location	Name	UPC	CRC	Facings	Capacity	DOS	ITEM STATUS	TYPE			
43	GATORADE G2 FRUIT PUNCH 32Z	052000321982	2583447	1	13	10.2	APPROVED				
44	GATORADE G2 GRAPE 32Z	052000321999	2583523	1	13	9.0	APPROVED				
45	GATORADE STRAWBERRY LEMONADE 32Z	052000104190	6837774	2	26	0	APPROVED				
46	GATORADE CITRUS 32Z	052000339055	7279912	2	26	0	NEW APPROVED				

1042418 Fort Lee Class 6 Cold

Door: 4 of 10



Segment: 4		Shelf: 3		w: 23.00 in	d: 60.00 in					
Location	Name	UPC	CRC	Facings	Capacity	DOS	ITEM STATUS	TYPE		
47	GATORADE FIERCE GRAPE 32Z	052000326734	8511396	2	32	6.2	APPROVED			
48	GATORADE FRUIT PUNCH 32Z	052000338751	2544294	4	64	8.5	CORE			
Segment: 4		Shelf: 12		w: 23.00 in	d: 60.00 in					
Location	Name	UPC	CRC	Facings	Capacity	DOS	ITEM STATUS	TYPE		
49	GATORADE COOL BLUE RASPBERRY 32Z	052000325553	476341	2	32	9.6	CORE			
50	GATORADE ORANGE 32Z	052000338768	2098002	4	64	7.8	CORE			
Segment: 4		Shelf: 21		w: 23.00 in	d: 60.00 in					
Location	Name	UPC	CRC	Facings	Capacity	DOS	ITEM STATUS	TYPE		
51	GATORADE FIERCE GREEN APPLE 32 OZ	052000104073	7271798	3	48	0	NEW APPROVED			
52	GATORADE LEMON LIME 32Z	052000338775	8212847	3	48	7.4	CORE			
Segment: 4		Shelf: 30		w: 23.00 in	d: 60.00 in					
Location	Name	UPC	CRC	Facings	Capacity	DOS	ITEM STATUS	TYPE		
53	GATORADE LEMON CUCUMBER 32Z	052000132243	6257550	3	48	0	CORE			
54	GATORADE GLACIER CHERRY 32 OZ	052000102390	6114697	3	48	7.2	CORE			
Segment: 4		Shelf: 39		w: 23.00 in	d: 60.00 in					
Location	Name	UPC	CRC	Facings	Capacity	DOS	ITEM STATUS	TYPE		
55	GATORADE FROST GLACIER FREEZE 32Z	052000320169	9388257	6	96	10.2	CORE			

1042418 Fort Lee Class 6 Cold

Door: 5 of 10



Segment: 5		Shelf: 4		w: 23.00 in		d: 60.00 in					
Location	Name	UPC	CRC	Facings	Capacity	DOS	ITEM STATUS	TYPE			
56	CORE POWER STRAWBERRY BANANA LIG...	856312002238	5859432	1	25	157.3	NEW APPROVED				
57	CORE POWER VANILLA 26G 11.5Z	856312002221	5859441	1	25	45.6	NEW APPROVED				
58	CORE POWER CHOCOLATE 26G 11.5Z	856312002207	5859427	1	25	30.6	NEW APPROVED				
59	CYTO MUSCLE MILK BANANA CRÈME 14Z ...	876063002035	3030782	1	20	14.1	CORE				
60	CYTO MUSCLE MILK VANILLA CRÈME 14Z ...	876063002028	3030448	1	20	17.2	CORE				
61	CYTO MUSCLE MILK CHOCOLATE 14Z PET	876063002011	3030205	1	20	8.7	CORE				
62	MUSCLE MLK PRO 40 KNK CHOCOLATE 14Z	876063002806	6453547	1	20	48.3	CORE				
63	YOO-HOO CHOCOLATE 15.5Z	072350000115	4805388	1	20	16.9	CORE				
Segment: 5		Shelf: 13		w: 23.00 in		d: 60.00 in					
Location	Name	UPC	CRC	Facings	Capacity	DOS	ITEM STATUS	TYPE			
64	V8 JUICE COCKTAIL SPICY MANGO	051000219653	7174802	1	24	0	NEW APPROVED				
65	V-8 CK VEGETABLE 12Z	051000138033	479799	1	24	54.1	CORE				
66	NAKED JUICE SUPERFOOD GRN MACHINE...	082592720153	2148199	1	26	14.1	APPROVED				
67	NAKED JUICE WELL BEING STRWBRY BAN...	082592194152	2161668	1	26	20.8	APPROVED				
68	NAKED JUICE PROTEIN ZONE 15.2Z	082592722157	2148207	1	26	29.5	APPROVED				
69	NAKED JUICE SUPERFOOD RED MACHINE ...	082592726155	2153570	1	26	25.0	APPROVED				
70	NAKED JUICE ANTIOXIDANT MIGHTY MAN...	082592660152	2167045	1	26	17.2	APPROVED				
71	NAKED JUICE SUPERFOOD BLUE MACHIN...	082592727152	2148209	1	26	19.0	APPROVED				
Segment: 5		Shelf: 22		w: 23.00 in		d: 60.00 in					
Location	Name	UPC	CRC	Facings	Capacity	DOS	ITEM STATUS	TYPE			
72	OCEAN SPRAY 100% ORNG JCE SNGLS 15....	012000071744	4021808	1	23	84.8	CORE				
73	OCEAN SPRAY 100% APLE JCE SNGLS 15.2Z	012000071751	4021786	1	23	0	CORE				
74	TROPICANA GRAPE 16Z	048500008638	9802687	1	23	0	CORE	WHSE			
75	TROPICANA CRANBERRY COCKTAIL 16Z	048500008645	7220154	1	23	16.6	CORE	WHSE			
76	TROPICANA RUBY RED 16Z	048500009406	7506554	1	23	182.5	CORE	WHSE			
77	TROPICANA OJ PINEAPPLE 16Z	048500008683	8118549	1	23	17.2	CORE	WHSE			
78	TROPICANA SEASONS BEST APPLE 16Z	048500008614	2440311	1	23	21.5	CORE	WHSE			
79	TROPICANA SEASONS BEST OJ 16Z	048500008607	2435600	1	23	48.0	CORE	WHSE			
Segment: 5		Shelf: 31		w: 23.00 in		d: 60.00 in					
Location	Name	UPC	CRC	Facings	Capacity	DOS	ITEM STATUS	TYPE			
80	MINUTE MAID JTG TROPICAL BLEND 15.2Z	025000018749	6557943	1	23	13.2	APPROVED				
81	MINUTE MAID JTG CRAN GRP 16Z	025000056062	1995324	1	23	0	APPROVED				
82	MINUTE MAID APPLE 15.2Z	025000056017	9849076	1	23	7.9	CORE				
83	MINUTE MAID ORANGE 15.2Z	025000056031	1829118	1	23	8.7	CORE				
84	TROPICANA PURE PREM GOJ OJ W/CAL 12Z	048500017760	2372200	1	26	10.8	APPROVED				
85	TROPICANA PURE PREM GOJ OJ HMSTL 12Z	048500017777	2372131	1	26	10.9	APPROVED				
86	TROPICANA PURE PREM GOJ OJ JC 12Z	048500017753	2372105	1	26	9.3	APPROVED				
87	TROPICANA FARMSTAND STRAWBERRY B...	048500021491	6601536	1	26	12.5	APPROVED				
Segment: 5		Shelf: 40		w: 23.00 in		d: 60.00 in					
Location	Name	UPC	CRC	Facings	Capacity	DOS	ITEM STATUS	TYPE			
88	TROPICANA FRUTZ MANGO 16 OZ	012000141829	7171144	1	23	0	NEW APPROVED				
89	TROPICANA FRUTZ ORANGE 16 OZ	012000141843	7171142	1	23	0	NEW APPROVED				
90	TROPICANA FRUTZ POMEGRANATE 16 OZ	012000141836	7171143	1	23	0	NEW APPROVED				
91	TROPICANA SEASON BST GRPFRT 32Z	048500000021	3081692	1	17	13.0	CORE	WHSE			
92	TROPICANA CRANBERRY COCKTAIL 32Z	048500006726	3893369	1	17	9.9	CORE	WHSE			
93	TROPICANA PURE PREM APPLE 32Z	048500000496	9257381	1	17	14.6	CORE	WHSE			
94	TROPICANA OJ 32Z	048500000007	4934147	1	17	9.8	CORE	WHSE			



1042418 Fort Lee Class 6 Cold

Door: 6 of 10

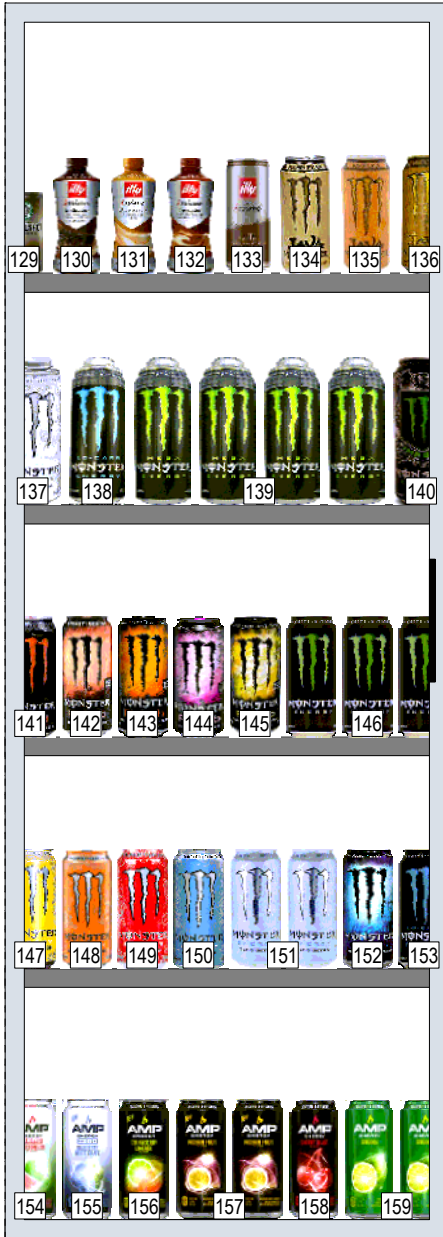


Segment: 6		Shelf: 5		w: 23.00 in		d: 60.00 in					
Location	Name	UPC	CRC	Facings	Capacity	DOS	ITEM STATUS	TYPE			
95	STRBX FRAP SMORES 13 7	012000044779	7171123	1	24	0	NEW APPROVED				
96	STRBX FRAP MOCH COCONUT 13 7	012000044786	7171124	1	24	0	NEW APPROVED				
97	STARBUCKS FRAP CARAMEL 13.7Z	012000016721	5740920	1	23	0	CORE				
98	STARBUCKS FRAPPUCCINO MCHA 13.7Z	012000004520	2847309	1	23	8.5	CORE				
99	STARBUCKS FRAPPUCCINO VAN 13.7Z	012000813313	709576	1	23	8.1	CORE				
100	STARBUCKS DBLE SHOT ENG VAN 15Z	012000028496	2946674	1	23	12.7	CORE				
101	STARBUCKS DBLE SHOT ENG MCHA 15Z	012000028458	2946695	1	23	14.3	CORE				
102	STRBX DS PROTEIN VAN 11Z	012000044953	7171139	1	26	0	NEW APPROVED				
Segment: 6		Shelf: 14		w: 23.00 in		d: 60.00 in					
Location	Name	UPC	CRC	Facings	Capacity	DOS	ITEM STATUS	TYPE			
103	ARIZONA RX ENERGY TEA CAN 23Z	613008718459	5920116	1	21	16.8	CORE	WHSE			
104	ARIZONA LEMON TEA CAN 23Z	088130994635	2480352	1	21	17.4	CORE	WHSE			
105	ARIZONA ARNOLD PALMER HALF/HALF CA...	613008719302	3524105	1	21	6.1	CORE	WHSE			
106	ARIZONA GREEN TEA CAN 23Z	613008715267	8640914	2	42	7.4	CORE	WHSE			
107	ARIZONA SWEET TEA CAN 23Z	613008717711	8423792	2	42	8.5	CORE	WHSE			
Segment: 6		Shelf: 23		w: 23.00 in		d: 60.00 in					
Location	Name	UPC	CRC	Facings	Capacity	DOS	ITEM STATUS	TYPE			
108	SOBE LIZARD LAVA 20Z	739510100701	1159834	1	21	29.6	APPROVED				
109	SOBE CITRUS ENERGY 20 OZ PET	739510900004	8649723	1	21	13.1	CORE				
110	SOBE GREEN 20Z	739510800106	4739213	1	21	34.8	CORE				
111	SOBE LIZARD BLIZZARD 20Z	739510900400	1172025	1	21	22.9	APPROVED				
112	ARIZONA TEA MUCHO MANGO 23OZ	613008735418	1517022	1	21	6.9	CORE	WHSE			
113	ARIZONA WATERMELON CAN 23Z	613008720209	1330214	1	21	16.5	CORE	WHSE			
114	ARIZONA FRUIT PUNCH CAN 23Z	613008718763	946202	1	21	9.5	CORE	WHSE			
Segment: 6		Shelf: 32		w: 23.00 in		d: 60.00 in					
Location	Name	UPC	CRC	Facings	Capacity	DOS	ITEM STATUS	TYPE			
115	LIPTON PURELEAF SWEET W/LEMON PET ...	012000286186	5508299	1	20	24.6	APPROVED				
116	LIPTON PURELEAF SWEET PET 18.5Z	012000286193	5508298	1	20	10.5	CORE				
117	LIPTON PURELEAF EXTRA SWEET 18.5OZ	012000286179	6061852	1	20	9.3	APPROVED				
118	SNAPPLE STRUPTEA SWEE 18.5 OZ	076183002230	7174721	1	23	0	NEW APPROVED				
119	SNAPPLE STRUPTEA SORT 18.5 OZ	076183002223	7174720	1	23	0	NEW APPROVED				
120	GOLD PEAK GREEN 18.5Z	083900005979	3971275	1	21	13.4	APPROVED				
121	GOLD PEAK SWEETENED 18.5Z	083900005757	3914450	1	21	8.3	CORE				
Segment: 6		Shelf: 41		w: 23.00 in		d: 60.00 in					
Location	Name	UPC	CRC	Facings	Capacity	DOS	ITEM STATUS	TYPE			
122	LIPTON SPARKLING PEACH 12OZ CAN	012000141102	7171126	1	25	0	NEW APPROVED				
123	LIPTON SPARKLING RASPBERRY 12OZ CAN	012000141119	7171127	1	25	0	NEW APPROVED				
124	LIPTON SPARKLING LEMONADE 12OZ CAN	012000141096	7171125	1	25	0	NEW APPROVED				
125	LIPTON BRISK STRAWBERRY LEMON 33.8Z	012000034039	4021137	1	17	15.4	APPROVED				
126	LIPTON BRISK RASPBERRY 33.8Z	012000024528	2507426	1	17	26.4	APPROVED				
127	LIPTON BRISK LEMON TEA 33.8Z	012000202384	2266261	1	18	84.2	APPROVED				
128	LIPTON BRISK SWEET TEA 33.8Z	012000031878	3468729	1	17	23.4	APPROVED				



1042418 Fort Lee Class 6 Cold

Door: 7 of 10



Segment: 7		Shelf: 6		w: 23.00 in		d: 60.00 in				
Location	Name	UPC	CRC	Facings	Capacity	DOS	ITEM STATUS	TYPE		
129	STARBUCKS DOUBLE SHOT 6.5Z 12P	01200001772	7488831	1	29	16.5	CORE			
130	ILLY MOCHACCINO	049000058178	7169771	1	25	0	NEW APPROVED			
131	ILLY ISSIMO LATTE MACCHIATO	049000058161	7169771	1	25	0	NEW APPROVED			
132	ILLY ISSIMO CAPPUCCINO	049000058154	7169770	1	25	0	NEW APPROVED			
133	ILLY ISSIMO CAFFE	049000053142	7169775	1	25	0	NEW APPROVED			
134	JAVA MONSTER COFFEE MEAN BEAN 15Z	070847812609	2480184	1	24	11.2	CORE			
135	JAVA MONSTER COFFEE KONA BLEND 15Z	070847812807	2480115	1	24	13.1	APPROVED			
136	JAVA MONSTER COFFEE LOCA MOCA 15Z	070847812715	2480251	1	24	14.7	CORE			
Segment: 7		Shelf: 15		w: 23.00 in		d: 60.00 in				
Location	Name	UPC	CRC	Facings	Capacity	DOS	ITEM STATUS	TYPE		
137	MONSTER ZERO ULTRA 24OZ CAN (WHITE ...	070847017707	6402785	1	20	7.1	CORE			
138	MONSTER MEGA ENERGY LO CARB 24Z	070847811213	1687233	1	20	7.7	CORE			
139	MONSTER MEGA ENERGY 24Z	070847811244	1559058	4	80	8.5	CORE			
140	MONSTER IMPORT ENERGY 18.6Z	070847819509	3565657	1	21	8.8	CORE			
Segment: 7		Shelf: 24		w: 23.00 in		d: 60.00 in				
Location	Name	UPC	CRC	Facings	Capacity	DOS	ITEM STATUS	TYPE		
141	MONSTER KHAOS 16Z	070847811749	1561056	1	23	14.2	APPROVED			
142	MONSTER REHAB PEACH 15 OZ	070847021520	7158206	1	23	466.4	NEW APPROVED			
143	MONSTER REHAB ORANGE ENERGY DRIN...	070847010463	5307026	1	23	15.8	APPROVED			
144	MONSTER REHAB PINK LEMONADE 16 Z	070847015246	6109487	1	23	17.6	APPROVED			
145	MONSTER REHAB TEA + LEMONADE 16Z	070847003229	4504577	1	23	12.1	CORE			
146	MONSTER ENERGY 16Z	070847811169	3448586	3	69	6.2	CORE			
Segment: 7		Shelf: 33		w: 23.00 in		d: 60.00 in				
Location	Name	UPC	CRC	Facings	Capacity	DOS	ITEM STATUS	TYPE		
147	MONSTER ULTRA CITRON 16OZ	070847021506	7168205	1	23	289.5	NEW APPROVED			
148	MONSTER ULTRA SUNRISE 16OZ.	070847020905	7038984	1	23	178.6	APPROVED			
149	MONSTER ULTRA RED CAN 16Z	070847017554	6402784	1	23	6.0	CORE			
150	MONSTER ULTRA BLUE 16 Z	070847016205	6109488	1	23	7.1	CORE			
151	MONSTER ZERO ULTRA CAN 16Z	070847012474	5712532	2	46	7.4	CORE			
152	MONSTER ABSOLUTELY ZERO 16Z	070847000037	4196362	1	23	10.2	CORE			
153	MONSTER ENERGY LO CARB 16Z	070847811268	2958379	1	23	10.3	CORE			
Segment: 7		Shelf: 42		w: 23.00 in		d: 60.00 in				
Location	Name	UPC	CRC	Facings	Capacity	DOS	ITEM STATUS	TYPE		
154	AMP ENERGY ZERO WATERMELON 16OZ	012000142192		1	23	0	NEW APPROVED			
155	AMP ENERGY ZERO BLUEBERRY WHITE G...	012000142185		1	23	0	NEW APPROVED			
156	AMP ENERGY STRAWBERRY LIMEADE 16OZ	012000142178		1	23	0	NEW APPROVED			
157	AMP ENERGY PASSION FRUIT 16OZ	012000142161		2	46	0	NEW APPROVED			
158	AMP CHERRY BLAST 16OZ	012000126352	5240541	1	23	19.3	APPROVED			
159	AMP BOOST ORIGINAL 16OZ	012000016431	1504346	2	48	10.5	APPROVED			

1042418 Fort Lee Class 6 Cold

Door: 8 of 10



Segment: 8		Shelf: 7		w: 23.00 in		d: 60.00 in				
Location	Name	UPC	CRC	Facings	Capacity	DOS	ITEM STATUS	TYPE		
160	ROCKSTAR RECOVERY 16Z	818094002080	3862888	1	23	27.2	APPROVED			
161	ROCKSTAR DIET ZERO CARB 16Z	818094000703	2148292	1	23	71.8	APPROVED			
162	ROCKSTAR PURE ZERO PUNCHED 16Z	818094003087	6400382	1	23	25.8	APPROVED			
163	ROCKSTAR PURE ZERO SILVER 16Z	818094002240	6400443	1	23	26.6	APPROVED			
164	ROCKSTAR PUNCHED TROPICAL PUNCH 16Z	818094003001	2716458	1	23	13.7	APPROVED			
165	ROCKSTAR DIET ENERGY 16Z	818094000024	5062849	1	23	16.0	APPROVED			
166	ROCKSTAR ENERGY 16Z	818094000017	4559449	1	23	6.8	CORE			
167	ROCKSTAR ENERGY 24Z	818094000147	1559676	1	21	11.2	APPROVED			
Segment: 8		Shelf: 16		w: 23.00 in		d: 60.00 in				
Location	Name	UPC	CRC	Facings	Capacity	DOS	ITEM STATUS	TYPE		
168	RED BULL 8.3Z 4P	611269108026	2733780	1	13	56.5	CORE			
169	RED BULL TOTAL ZERO 8.3Z	611269623727	5217323	1	28	17.3	APPROVED			
170	RED BULL SUGAR FREE 8.3Z	611269101713	2035178	2	56	17.2	APPROVED			
171	RED BULL 8.3Z	611269991000	7805179	5	140	9.4	CORE			
Segment: 8		Shelf: 25		w: 23.00 in		d: 60.00 in				
Location	Name	UPC	CRC	Facings	Capacity	DOS	ITEM STATUS	TYPE		
172	RED BULL TOTAL ZERO 12Z	611269623734	5218240	1	27	17.7	APPROVED			
173	RED BULL 12Z	611269818994	1807875	3	81	6.1	CORE			
174	RED BULL YELLOW EDITION TROPICAL 12 OZ	611269113570	7012304	1	27	252.7	NEW APPROVED			
175	RED BULL BLUE EDITION BLUEBERRY 12 OZ	611269182460	7012303	1	27	0	NEW APPROVED			
176	RED BULL RED EDITION CRANBERRY 12 OZ	611269174526	7012302	1	27	0	NEW APPROVED			
177	RED BULL TOTAL ZERO CHERRY 12 OZ	611269151237	7012301	1	27	1642.5	NEW APPROVED			
178	RED BULL TOTAL ZERO ORANGE 12 OZ	611269142488	7012300	1	27	448.0	NEW APPROVED			
Segment: 8		Shelf: 34		w: 23.00 in		d: 60.00 in				
Location	Name	UPC	CRC	Facings	Capacity	DOS	ITEM STATUS	TYPE		
179	RED BULL SUGAR FREE 12Z	611269716467	2052401	1	27	12.4	CORE			
180	RED BULL SUGAR FREE 16.9Z	611269546026	2862096	1	25	10.9	CORE			
181	RED BULL 16.9Z	611269546019	2577730	3	69	5.5	CORE			
182	RED BULL SUGAR FREE 19.2Z	611269133455	3989153	1	24	21.8	APPROVED			
183	RED BULL 19.2Z	611269133448	3989137	2	48	6.4	CORE			
Segment: 8		Shelf: 43		w: 23.00 in		d: 60.00 in				
Location	Name	UPC	CRC	Facings	Capacity	DOS	ITEM STATUS	TYPE		
184	XYIENCE XENERGY CHERRY LIME 16Z	842885098211	3465946	1	23	9.2	APPROVED			
185	XYIENCE XENERGY MANGO GUAVA 16Z	842885098716	2651187	1	23	7.8	APPROVED			
186	XYIENCE XENERGY FROST BERRY BLAST 1...	842885097153	5074590	1	23	8.8	APPROVED			
187	FULL THROTTLE TROPICAL CITRUS 16Z	049000036879	5257548	1	23	11.6	CORE			
188	NOS HIGH PERFORMANCE ORIGINAL 16Z	080793803910	1675210	1	23	7.6	CORE			
189	NOS HIGH PERFORMANCE ORIGINAL 22Z	080793804740	2148185	2	42	10.7	APPROVED			



1042418 Fort Lee Class 6 Cold

Door: 9 of 10



Segment: 9		Shelf: 8		w: 23.00 in		d: 48.00 in					
Location	Name	UPC	CRC	Facings	Capacity	DOS	ITEM STATUS	TYPE			
190	COCA-COLA LIFE 20Z	049000065220	7169768	2	34	0	NEW APPROVED				
191	COKE CLASSIC COLA 20Z	049000000443	9054715	5	85	11.7	CORE				
Segment: 9		Shelf: 17		w: 23.00 in		d: 48.00 in					
Location	Name	UPC	CRC	Facings	Capacity	DOS	ITEM STATUS	TYPE			
192	COKE ZERO COLA 20Z	049000040869	131268	1	17	9.0	CORE				
193	COKE DT CLASSIC COLA 20Z	049000000450	122069	1	17	8.1	CORE				
194	COKE CHERRY ZERO 20Z	049000047547	2148145	1	17	8.3	APPROVED				
195	COKE CHERRY COLA 20Z	049000018011	8674129	2	34	14.2	CORE				
196	COKE VANILLA 20Z	049000031171	2571749	2	34	10.9	CORE				
Segment: 9		Shelf: 26		w: 23.00 in		d: 48.00 in					
Location	Name	UPC	CRC	Facings	Capacity	DOS	ITEM STATUS	TYPE			
197	SUNKIST ORANGE 20Z	078000113402	7417025	1	17	0	CORE				
198	A & W ROOT BEER 20Z	078000052404	1251149	1	17	0	CORE				
199	FANTA ORANGE 20Z	049000019162	7433026	1	17	12.2	APPROVED				
200	FANTA STRAWBERRY 20Z	049000026207	6362249	1	17	12.5	APPROVED				
201	MINUTE MAID LEMONADE 20Z	025000058011	2891281	1	17	22.9	APPROVED				
202	SPRITE LEMON LIME 20Z	049000007640	388801	2	34	15.4	CORE				
Segment: 9		Shelf: 35		w: 23.00 in		d: 48.00 in					
Location	Name	UPC	CRC	Facings	Capacity	DOS	ITEM STATUS	TYPE			
203	CANADA DRY GINGER ALE 20Z	078000152401	1389634	1	17	7.2	CORE				
204	DR PEPPER TEN PET 20Z	078000001655	4657346	1	17	25.0	APPROVED				
205	DR PEPPER DT 20Z	078000083408	2283224	1	17	8.5	CORE				
206	DR PEPPER CHERRY 20Z	078000098402	3364713	1	17	15.1	APPROVED				
207	DR PEPPER 20Z	078000082401	8312621	3	51	11.4	CORE				
Segment: 9		Shelf: 44		w: 23.00 in		d: 48.00 in					
Location	Name	UPC	CRC	Facings	Capacity	DOS	ITEM STATUS	TYPE			
208	DR PEPPER 33.8Z	078000082456	9916644	1	14	5.8	APPROVED				
209	SPRITE LEMON LIME 33.8Z	049000023190	867608	1	14	7.4	APPROVED				
210	COKE DT CLASSIC COLA 33.8Z	049000005240	919764	1	14	7.7	APPROVED				
211	COKE CLASSIC COLA 33.8Z	049000005226	5656575	3	42	9.2	APPROVED				



1042418 Fort Lee Class 6 Cold

Door: 10 of 10



Segment: 10		Shelf: 9		w: 23.00 in		d: 48.00 in				
Location	Name	UPC	CRC	Facings	Capacity	DOS	ITEM STATUS	TYPE		
212	PEPSI DT COLA 20Z	01200001307	1867795	2	34	14.1	CORE			
213	PEPSI WILD CHERRY COLA 20Z	012000005596	3433794	1	17	11.8	CORE			
214	PEPSI COLA 20Z	012000001291	6276422	4	68	11.8	CORE			
Segment: 10		Shelf: 18		w: 23.00 in		d: 48.00 in				
Location	Name	UPC	CRC	Facings	Capacity	DOS	ITEM STATUS	TYPE		
215	PEPSI MAX 16Z CAN	012000030321	7171130	1	20	0	NEW APPROVED			
216	PEPSI MAX CHRY BLST 16Z CAN	012000141003	7171132	1	20	0	NEW APPROVED			
217	KICKSTART HYDBST STRAWBERRY KIWI 12...	012000141423	7171129	1	20	0	NEW APPROVED			
218	KICKSTART HYDBST PINE ORNGE MNGO 1...	012000141430	7171128	1	20	0	NEW APPROVED			
219	MOUNTAIN DEW KICKSTART FRUIT PUNCH...	012000110467	5951591	1	20	19.1	CORE			
220	MOUNTAIN DEW KICKSTART ORANGE CAN ...	012000110443	5951557	1	20	18.2	CORE			
221	MOUNTAIN DEW KICKSTART BLACKCHERR...	012000043000	6559142	1	20	13.3	CORE			
222	MOUNTAIN DEW KICKSTART LIMEAIDE 16Z	012000043017	6559130	1	20	19.6	APPROVED			
Segment: 10		Shelf: 27		w: 23.00 in		d: 48.00 in				
Location	Name	UPC	CRC	Facings	Capacity	DOS	ITEM STATUS	TYPE		
223	MOUNTAIN DEW LIVEWIRE ORANGE 20Z	012000811319	2300812	1	17	18.8	APPROVED			
224	MOUNTAIN DEW DEWMCRCY VLTGE 20Z	012000028625	2989397	1	17	9.8	CORE			
225	MOUNTAIN DEW CODE RED CITRUS 20Z	012000002243	2218048	1	17	13.5	CORE			
226	MOUNTAIN DEW DT CITRUS 20Z	012000001345	4802252	3	51	15.2	CORE			
227	DEW SHINE 12 OZ	012000005923		1	20	0	NEW APPROVED			
Segment: 10		Shelf: 36		w: 23.00 in		d: 48.00 in				
Location	Name	UPC	CRC	Facings	Capacity	DOS	ITEM STATUS	TYPE		
228	MOUNTAIN DEW CITRUS 20Z	012000001314	7775497	7	119	11.0	CORE			
Segment: 10		Shelf: 45		w: 23.00 in		d: 48.00 in				
Location	Name	UPC	CRC	Facings	Capacity	DOS	ITEM STATUS	TYPE		
229	MOUNTAIN DEW DT CITRUS 33.8Z	012000003189	1516694	1	14	6.0	APPROVED			
230	MOUNTAIN DEW CITRUS 33.8Z	012000002977	6611788	3	42	5.5	APPROVED			
231	PEPSI DT COLA 33.8Z	012000002953	1112813	1	14	10.9	APPROVED			
232	PEPSI COLA 33.8Z	012000002946	4011333	1	14	5.9	APPROVED			

ITEMS NOT INCLUDED IN PLANOGRAM

BASED ON THIS STORES SALES DATA IN THE LAST 52WEEKS

	Category	UPC	Name
1	CHILLED	048500019047	TROPICANA TROP50 ORGNL 12Z
2	CHILLED	082592633750	NAKED JUICE PROTEIN GREENS 15.2Z
3	CHILLED	082592988157	NAKED JUICE ANTIOXIDANT BERRY BLAST 15.2Z
4	CSD	049000037197	SPRITE ZERO LEMON LIME 20Z
5	CSD	049000051148	SPRITE LEMON LIME 16Z
6	CSD	072979004297	SEAGRAMS GINGER ALE 1 LITER
7	CSD	012000018800	PEPSI DT MAX 20Z
8	CSD	012000813337	PEPSI DT COLA 16Z
9	CSD	012000813320	PEPSI COLA 16Z
10	CSD	012000813344	MOUNTAIN DEW CITRUS 16Z BOTTLE
11	CSD	025000058868	MINUTE MAID PINK LEMONADE 20Z
12	CSD	025000058028	MINUTE MAID FRUIT PUNCH 20Z
13	CSD	049000028201	FANTA PINEAPPLE 20Z
14	CSD	078000003208	DR PEPPER 16Z
15	CSD	049000051216	COKE ZERO COLA 16Z
16	CSD	049000036473	COKE DT WITH LIME COLA 20Z
17	CSD	049000051162	COKE DT CLASSIC COLA 16Z
18	CSD	049000051155	COKE CLASSIC COLA 16Z
19	CSD	078000152456	CANADA DRY GINGER ALE 33.8Z
20	CSD	078000001617	7-UP LEMON LIME 20Z
21	ENERGY	186249000046	XYIENCE XENERGY CRAN RAZZ 16OZ
22	ENERGY	818094002899	RSTAR SPARKLING CHERRY 16OZ
23	ENERGY	818094000444	ROCKSTAR SPARKLING PEACH 16Z
24	ENERGY	611269109009	RED BULL SUGAR FREE 8.3Z 4P
25	ENERGY	611269124576	RED BULL FLAVORED SILVER EDITION 8.3Z
26	ENERGY	611269357011	RED BULL FLAVORED RED EDITION 8.3Z
27	ENERGY	611269235685	RED BULL FLAVORED BLUE EDITION 8.3Z
28	ENERGY	070847015284	MUSCLE MONSTER VANILLA WHIP 15 Z
29	ENERGY	070847015260	MUSCLE MONSTER CHOCOLATE SHAKE 15 Z
30	ENERGY	070847020608	MONSTER UNLEADED 16OZ.
31	ENERGY	070847006145	MONSTER REHAB ROJO TEA + ENERGY DRINK 15.5OZ
32	ENERGY	070847006121	MONSTER REHAB GREEN TEA + ENERGY DRINK 15.5OZ
33	ENERGY	070847017660	MONSTER MUSCLE SHK STRWBERRY CAN 15Z
34	ENERGY	070847812906	MONSTER M-80 16Z
35	ENERGY	070847811176	MONSTER ENERGY 16Z 4P
36	ENERGY	070847014102	MONSTER DUB MAD DOG PUNCH PUNCH 16OZ CAN
37	ENERGY	070847012764	MONSTER DUB BALLER'S BLEND PUNCH 16OZ CAN
38	ENERGY	070847004301	MONSTER ABSOLUTELY ZERO 24OZ SINGLE
39	ENERGY	070847813101	JAVA MONSTER COFFEE VANILLA LIGHT 15Z
40	ENERGY	012000126338	AMP FOCUS MIXED BERRY 16OZ
41	ENERGY	012000021183	AMP BOOST SUGAR FREE 16OZ
42	ENERGY	012000382505	AMP BOOST GRAPE 16OZ
43	ENERGY	012000126345	AMP ACTIVE LEMON 16OZ
44	ISO	049000050707	POWERADE ZERO STRAWBERRY 32Z
45	ISO	049000054361	POWERADE ZERO ORANGE 32Z
46	ISO	052000328684	GATORADE LEMON LIME 20Z
47	ISO	052000320695	GATORADE FIERCE MELON 32Z
48	ISO	052000104066	GATORADE BLUE CHERRY 32Z

ITEMS NOT INCLUDED IN PLANOGRAM

49	JUICE & DRINK	180127000500	ZICO COCONUT WATER NATURAL 14Z
50	JUICE & DRINK	180127000852	ZICO CHOCOLATE COCONUT WATER 14OZ
51	JUICE & DRINK	041800715008	WELCH'S SPARKLING WHITE 25.4Z
52	JUICE & DRINK	898999040004	VITA COCO COCONUT WATER PEACH MANGO 17Z
53	JUICE & DRINK	051000146540	V-8 CK SPLASH TROPICAL BLEND 16Z
54	JUICE & DRINK	012000021367	OCEAN SPRAY CRANBERRY SINGLES 15.2Z
55	JUICE & DRINK	031200200006	OCEAN SPRAY CRANBERRY COCKTAIL 32Z
56	JUICE & DRINK	012000021381	OCEAN SPRAY CRAN-GRAPE SINGLES 15.2Z
57	JUICE & DRINK	082592632555	NAKED JUICE COCONUT WATER 11 OZ
58	JUICE & DRINK	089396156157	MISTIC STRAWBERRY KIWI 16Z
59	JUICE & DRINK	089396156119	MISTIC GRAPE STRAWBERRY 16Z
60	JUICE & DRINK	089396156126	MISTIC FRUIT PUNCH 16Z
61	JUICE & DRINK	025000018671	MINUTE MAID JTG BERRY BLEND 15.2Z
62	JUICE & DRINK	503789012273	GRANINI PEACH 1L PET US
63	JUICE & DRINK	503780006165	GRANINI MULTIFRUIT 1L PET US
64	JUICE & DRINK	503780006172	GRANINI BANANA 1L PET US
65	JUICE & DRINK	079581995104	CALYPSO LEMONADE 20Z
66	JUICE & DRINK	726284000023	NANTUCKET NECTARS ORANGE MANGO 16Z
67	RTD COFFEE	012000041433	STARBUCKS ICED COFFEE VANILLA 11Z
68	RTD COFFEE	012000041396	STARBUCKS ICED COFFEE + MILK 11Z
69	RTD COFFEE	012000001802	STARBUCKS FRAPPUCINO 13.7Z
70	RTD TEA	076183163566	SNAPPLE PEACH 16Z
71	RTD TEA	076183163634	SNAPPLE KIWI STRAW COCKTL 16Z
72	RTD TEA	070847004066	PEACE TEA RAZZLEBERRY 23Z NPP
73	RTD TEA	070847004028	PEACE TEA LEMON 23Z NPP
74	RTD TEA	070847004042	PEACE TEA GREEN 23Z NPP
75	RTD TEA	070847018544	PEACE TEA GEORGIA PEACH 23OZ NPP
76	RTD TEA	070847003670	PEACE TEA CADDYSHACK TEA NPP 23OZ
77	RTD TEA	012000031991	LIPTON ICED TEA LEMON 128Z
78	RTD TEA	012000024535	LIPTON GREEN TEA CITRUS PET JUG 128Z
79	RTD TEA	012000012754	LIPTON GREEN TEA 20Z
80	RTD TEA	012000024542	LIPTON DIET GREEN TEA CITRUS PET 128Z
81	RTD TEA	012000012785	LIPTON DIET GREEN TEA CITRUS 20Z
82	RTD TEA	012000034022	LIPTON BRISK JUICY PEACH 33.8Z
83	RTD TEA	012000034015	LIPTON BRISK HALF & HALF TEA 33.8Z
84	RTD TEA	080793808311	FUZE TEA W LEMON 1 LTR
85	RTD TEA	080793808335	FUZE TEA LEMONADE 1 LTR
86	SPORTS NUTRITION	876063002813	MUSCLE MLK PRO 40 INTNS VANILLA 14Z
87	SPORTS NUTRITION	876063002097	CYTO MUSCLE MILK STRAWBERRIES N CREAM 14Z PET
88	SPORTS NUTRITION	856312002252	CORE POWER CHOCOLATE LIGHT 20G 11.5Z
89	SPORTS NUTRITION	856312002696	CORE POWER BANANA 20G 11.5Z
90	SPORTS NUTRITION	858176002065	BODY ARMOR STRWBRY BANA 16OZ
91	SPORTS NUTRITION	858176002058	BODY ARMOR MANGO MANDARIN 16Z
92	SPORTS NUTRITION	858176002133	BODY ARMOR CHERRY CITRUS 16OZ
93	SPORTS NUTRITION	858176002089	BODY ARMOR BLUE RASPBERRY 16OZ
94	SPORTS NUTRITION	858176002171	BODY ARMOR 16OZ TROPICAL CITRUS
95	SPORTS NUTRITION	858176002188	BODY ARMOR 16OZ ACAI BLUE
96	WATER	052000707786	PROPEL FIT WTR KIWI STRAW 20Z
97	WATER	052000707793	PROPEL FIT WTR GRAPE 20Z
98	WATER	052000707779	PROPEL FIT WTR BERRY 20Z

ITEMS NOT INCLUDED IN PLANOGRAM

99	WATER	899407005011	NEURO SLEEP MANGO DREAM 14.5Z
100	WATER	899407004014	NEURO BLISS WHITE RASPBERRY 14.5Z
101	WATER	893919001301	ICELANDIC GLACIAL 33.8Z
102	WATER	893919001509	ICELANDIC GLACIAL 25.3Z
103	WATER	893919001103	ICELANDIC GLACIAL 20Z
104	WATER	786162002969	GLACEAU VITAMINWATER ZERO XXX ACAI BLU POM 20Z
105	WATER	786162110008	GLACEAU VITAMINWATER REV FRTPN 20Z
106	WATER	786162070005	GLACEAU VITAMINWATER FOCUS KWI STRAW 20Z
107	WATER	786162003843	GLACEAU FRTWTR STRWBRY KIWI PET 16.9Z
108	WATER	786162003874	GLACEAU FRTWTR BLK RASPBRY PET 16.9Z

1042418 Fort Lee Class 6 Warm



1042418 Fort Lee Class 6 Warm

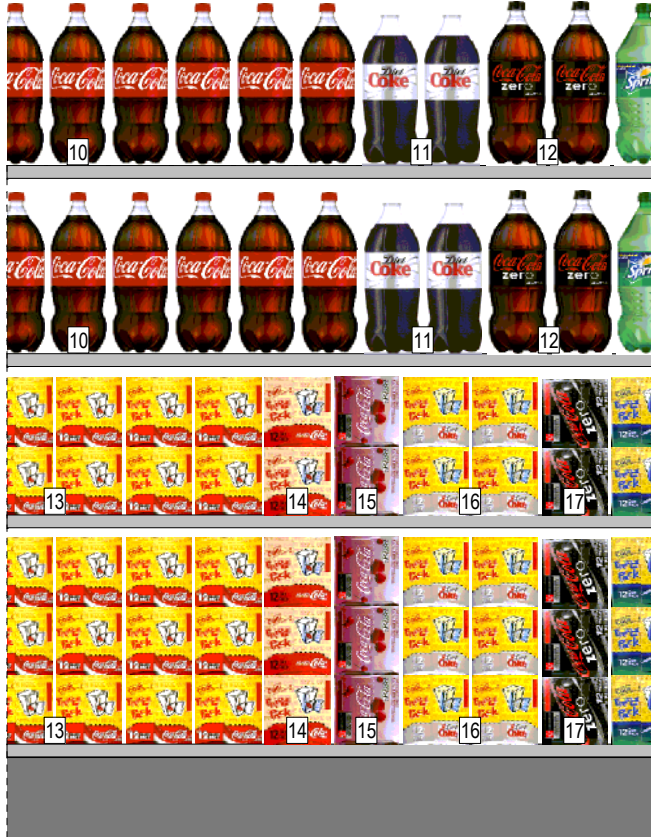
Door: 1 of 6



Segment: 1		Shelf: 1		w: 48.00 in		d: 22.00 in				
Location	Name	UPC	CRC	Facings	Capacity	DOS	ITEM STATUS	TYPE		
1	PEPSI COLA 67.6Z	01200001130	7079966	6	30	14.8	CORE			
2	PEPSI DT COLA 67.6Z	01200001321	1696566	2	10	10.6	CORE			
3	MOUNTAIN DEW CITRUS 67.6Z	01200002335	4801684	4	20	14.3	CORE			
4	MOUNTAIN DEW DT CITRUS 67.6Z	01200007460	7403306	1	5	16.7	APPROVED			
Segment: 1		Shelf: 9		w: 48.00 in		d: 22.00 in				
Location	Name	UPC	CRC	Facings	Capacity	DOS	ITEM STATUS	TYPE		
1	PEPSI COLA 67.6Z	01200001130	7079966	6	30	14.8	CORE			
2	PEPSI DT COLA 67.6Z	01200001321	1696566	2	10	10.6	CORE			
3	MOUNTAIN DEW CITRUS 67.6Z	01200002335	4801684	4	20	14.3	CORE			
5	SIERRA MIST NATURAL 67.6Z	01200158056	4286130	1	5	20.7	APPROVED			
Segment: 1		Shelf: 16		w: 48.00 in		d: 22.00 in				
Location	Name	UPC	CRC	Facings	Capacity	DOS	ITEM STATUS	TYPE		
6	PEPSI COLA 12Z 12P	012000809941	5534078	6	15	13.7	CORE			
7	PEPSI DT COLA 12Z 12P	012000809958	5034715	2	5	9.7	CORE			
8	MOUNTAIN DEW CITRUS 12Z 12P	012000809965	7333800	4	10	8.9	CORE			
9	MOUNTAIN DEW DT CITRUS 12Z 12P	012000809972	6736003	2	5	19.4	CORE			
Segment: 1		Shelf: 19		w: 48.00 in		d: 22.00 in				
Location	Name	UPC	CRC	Facings	Capacity	DOS	ITEM STATUS	TYPE		
6	PEPSI COLA 12Z 12P	012000809941	5534078	6	15	13.7	CORE			
7	PEPSI DT COLA 12Z 12P	012000809958	5034715	2	5	9.7	CORE			
8	MOUNTAIN DEW CITRUS 12Z 12P	012000809965	7333800	4	10	8.9	CORE			
9	MOUNTAIN DEW DT CITRUS 12Z 12P	012000809972	6736003	2	5	19.4	CORE			

1042418 Fort Lee Class 6 Warm

Door: 2 of 6



Segment: 2		Shelf: 2		w: 48.00 in		d: 22.00 in				
Location	Name	UPC	CRC	Facings	Capacity	DOS	ITEM STATUS	TYPE		
10	COKE CLASSIC COLA 67.6Z	049000050103	3293804	18	90	11.9	CORE			
11	COKE DT CLASSIC COLA 67.6Z	049000050110	3317129	4	20	9.9	CORE			
12	COKE ZERO COLA 67.6Z	049000050141	3317194	4	20	14.7	CORE			
Segment: 2		Shelf: 10		w: 48.00 in		d: 22.00 in				
Location	Name	UPC	CRC	Facings	Capacity	DOS	ITEM STATUS	TYPE		
10	COKE CLASSIC COLA 67.6Z	049000050103	3293804	18	90	11.9	CORE			
11	COKE DT CLASSIC COLA 67.6Z	049000050110	3317129	4	20	9.9	CORE			
12	COKE ZERO COLA 67.6Z	049000050141	3317194	4	20	14.7	CORE			
Segment: 2		Shelf: 17		w: 48.00 in		d: 22.00 in				
Location	Name	UPC	CRC	Facings	Capacity	DOS	ITEM STATUS	TYPE		
13	COKE CLASSIC COLA 12Z 12P	049000028904	3785688	12	30	9.8	CORE			
14	COKE VANILLA 12Z 12P	049000031249	3523958	2	5	0	CORE			
15	COKE CHERRY COLA 12Z 12P	049000031034	4981308	2	5	17.1	CORE			
16	COKE DT CLASSIC COLA 12Z 12P	049000028911	5429986	4	10	10.9	APPROVED			
17	COKE ZERO COLA 12Z 12P	049000042559	8346793	2	5	10.5	CORE			
Segment: 2		Shelf: 20		w: 48.00 in		d: 22.00 in				
Location	Name	UPC	CRC	Facings	Capacity	DOS	ITEM STATUS	TYPE		
13	COKE CLASSIC COLA 12Z 12P	049000028904	3785688	12	30	9.8	CORE			
14	COKE VANILLA 12Z 12P	049000031249	3523958	2	5	0	CORE			
15	COKE CHERRY COLA 12Z 12P	049000031034	4981308	2	5	17.1	CORE			
16	COKE DT CLASSIC COLA 12Z 12P	049000028911	5429986	4	10	10.9	APPROVED			
17	COKE ZERO COLA 12Z 12P	049000042559	8346793	2	5	10.5	CORE			



1042418 Fort Lee Class 6 Warm

Door: 3 of 6

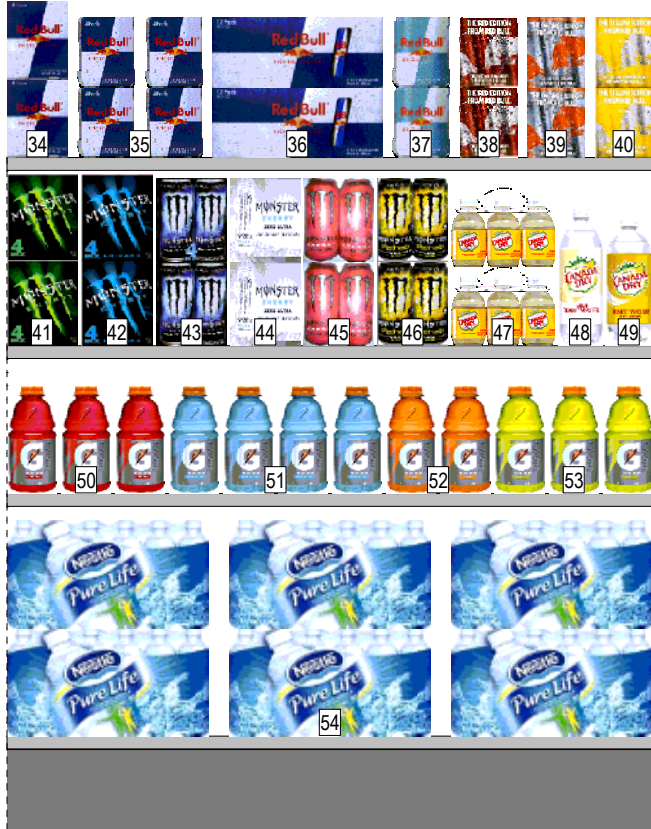
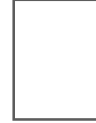


Segment: 3		Shelf: 3		w: 48.00 in		d: 22.00 in				
Location	Name	UPC	CRC	Facings	Capacity	DOS	ITEM STATUS	TYPE		
18	SPRITE LEMON LIME 67.6Z CONTOUR BTL	049000050158	1903806	5	25	10.2	CORE			
19	SEAGRAM'S GINGER ALE 2 LITER	072979004181	405225	1	5	9.9	APPROVED			
20	DR. PEPPER 2 LTR BTL	078000082463	6903611	4	20	10.8	CORE			
21	DR PEPPER DT 67.6Z	078000083460	6903660	2	10	0	CORE			
22	A & W 67.6Z	078000052466	9001207	2	10	22.8	CORE			
23	SUNKIST ORANGE 67.6Z	078000113464	9504317	2	10	22.8	APPROVED			
24	7-UP LEMON LIME 67.6Z	078000000344	1205590	2	10	11.2	CORE			
25	SCHWEPES GINGER ALE 67.6Z	078000206463	2827418	1	5	20.7	APPROVED			
26	CANADA DRY 67.6Z	078000152463	762625	3	15	7.4	CORE			
Segment: 3		Shelf: 11		w: 48.00 in		d: 22.00 in				
Location	Name	UPC	CRC	Facings	Capacity	DOS	ITEM STATUS	TYPE		
18	SPRITE LEMON LIME 67.6Z CONTOUR BTL	049000050158	1903806	5	25	10.2	CORE			
20	DR. PEPPER 2 LTR BTL	078000082463	6903611	4	20	10.8	CORE			
21	DR PEPPER DT 67.6Z	078000083460	6903660	2	10	0	CORE			
22	A & W 67.6Z	078000052466	9001207	2	10	22.8	CORE			
23	SUNKIST ORANGE 67.6Z	078000113464	9504317	2	10	22.8	APPROVED			
24	7-UP LEMON LIME 67.6Z	078000000344	1205590	2	10	11.2	CORE			
26	CANADA DRY 67.6Z	078000152463	762625	3	15	7.4	CORE			
Segment: 3		Shelf: 18		w: 48.00 in		d: 22.00 in				
Location	Name	UPC	CRC	Facings	Capacity	DOS	ITEM STATUS	TYPE		
27	SPRITE LEMON LIME 12Z 12P	049000028928	3838013	4	10	12.2	CORE			
28	DR PEPPER 12Z 12P	078000082166	7304512	4	10	11.4	CORE			
29	DR PEPPER DT 12Z 12P	078000083163	6747802	2	5	50.7	CORE			
30	A & W ROOT BEER 12Z 12P	078000052169	912618	2	5	22.5	CORE			
31	SUNKIST ORANGE 12Z 12P	078000113167	2913119	2	5	25.0	APPROVED			
32	7-UP LEMON LIME 12Z 12P	078000011807	9950957	2	5	35.1	CORE			
33	CANADA DRY GINGER ALE 12Z 12P	078000152166	330332	4	10	13.1	CORE			
Segment: 3		Shelf: 21		w: 48.00 in		d: 22.00 in				
Location	Name	UPC	CRC	Facings	Capacity	DOS	ITEM STATUS	TYPE		
27	SPRITE LEMON LIME 12Z 12P	049000028928	3838013	4	10	12.2	CORE			
28	DR PEPPER 12Z 12P	078000082166	7304512	4	10	11.4	CORE			
29	DR PEPPER DT 12Z 12P	078000083163	6747802	2	5	50.7	CORE			
30	A & W ROOT BEER 12Z 12P	078000052169	912618	2	5	22.5	CORE			
31	SUNKIST ORANGE 12Z 12P	078000113167	2913119	2	5	25.0	APPROVED			
32	7-UP LEMON LIME 12Z 12P	078000011807	9950957	2	5	35.1	CORE			
33	CANADA DRY GINGER ALE 12Z 12P	078000152166	330332	4	10	13.1	CORE			



1042418 Fort Lee Class 6 Warm

Door: 4 of 6



Segment: 4		Shelf: 4		w: 48.00 in		d: 22.00 in				
Location	Name	UPC	CRC	Facings	Capacity	DOS	ITEM STATUS	TYPE		
34	RED BULL 12Z 4P	611269263732	2205690	1	8	15.2	APPROVED			
35	RED BULL 8.3Z 4P	611269108026	2733780	2	20	56.5	CORE			
36	RED BULL 8.3Z 12P	611269426724	1301366	1	10	23.5	CORE			
37	RED BULL SUGAR FREE 8.3Z 4P	611269109009	1014398	1	10	140.4	CORE			
38	RED BULL FLAVORED RED EDITION 8.3Z/4P	611269357042	6169254	1	10	50.0	APPROVED			
39	RED BULL TOTAL ZERO ORANGE 8OZ 4PK	611269142747	7160834	1	10	730.0	NEW APPROVED			
40	RED BULL YELLOW EDITION TRPCL 8.4 OZ ...	611269163575	7160828	1	10	912.5	NEW APPROVED			
Segment: 4		Shelf: 12		w: 48.00 in		d: 22.00 in				
Location	Name	UPC	CRC	Facings	Capacity	DOS	ITEM STATUS	TYPE		
41	MONSTER ENERGY 16Z 4P	070847811176	1332437	1	8	4.8	CORE			
42	MONSTER ENERGY LO CARB 16Z 4P	070847811299	1332445	1	8	17.3	CORE			
43	MONSTER ABSOLUTELY ZERO 16Z 4P	070847000051	4504422	1	8	28.9	CORE			
44	MONSTER ZERO ULTRA CAN 16OZ 4PK	070847013242	6171621	1	8	11.9	CORE			
45	ULTRA RED 16OZ 4 PACKS	070847019206	6626082	1	8	417.1	APPROVED			
46	MONSTER REHAB TEA + LEMONADE 16Z 4P	070847003342	4504625	1	8	365.0	CORE			
47	CANADA DRY MIXER TONIC 10Z 6P	078000001235	6436609	1	8	132.7	CORE			
48	CANADA DRY MIXER DIET TONIC 33.8Z	078000149456	4316967	1	6	7.7	CORE			
49	CANADA DRY MIXER TONIC 33.8Z	078000153453	762823	1	6	4.3	CORE			
Segment: 4		Shelf: 13		w: 48.00 in		d: 22.00 in				
Location	Name	UPC	CRC	Facings	Capacity	DOS	ITEM STATUS	TYPE		
50	GATORADE FRUIT PUNCH 32Z	052000338751	2544294	3	15	8.5	CORE			
51	GATORADE FROST GLACIER FREEZE 32Z	052000320169	9388257	4	20	10.2	CORE			
52	GATORADE ORANGE 32Z	052000338768	2098002	2	10	7.8	CORE			
53	GATORADE LEMON LIME 32Z	052000338775	8212847	3	15	7.4	CORE			
Segment: 4		Shelf: 22		w: 48.00 in		d: 22.00 in				
Location	Name	UPC	CRC	Facings	Capacity	DOS	ITEM STATUS	TYPE		
54	NESTLE PURE LIFE OTHER 16.9Z 24P	068274934711	1972625	9	36	3.7	CORE	WHSE		

1042418 Fort Lee Class 6 Warm

Door: 5 of 6



Segment: 5		Shelf: 5		w: 48.00 in		d: 22.00 in				
Location	Name	UPC	CRC	Facings	Capacity	DOS	ITEM STATUS	TYPE		
55	TROPICANA OJ 32Z	048500000007	4934147	2	12	9.8	CORE	WHSE		
56	TROPICANA PURE PREM APPLE 32Z	048500000496	9257381	2	12	14.6	CORE	WHSE		
57	TROPICANA SEASON BST GRPFRT 32Z	048500000021	3081692	2	12	13.0	CORE	WHSE		
58	TROPICANA CRANBERRY COCKTAIL 32Z	048500006726	3893369	3	18	9.9	CORE	WHSE		
59	OCEAN SPRAY CRANBERRY COCKTAIL 32Z	031200200006	5405416	3	15	3.5	CORE			
Segment: 5		Shelf: 7		w: 48.00 in		d: 22.00 in				
Location	Name	UPC	CRC	Facings	Capacity	DOS	ITEM STATUS	TYPE		
60	TROPICANA SEASONS BEST OJ 64Z	048500005729	2616704	6	30	12.4	CORE	WHSE		
61	CAPRI SUN FRUIT PUNCH 6.75Z 10P	087684001073	5451745	1	8	27.5	APPROVED			
62	CAPRI SUN STRAWBERRY KIWI 6.75Z 10P	087684000991	5602776	1	8	29.5	APPROVED			
Segment: 5		Shelf: 14		w: 48.00 in		d: 22.00 in				
Location	Name	UPC	CRC	Facings	Capacity	DOS	ITEM STATUS	TYPE		
63	AQUAFINA OTHER 16.9Z 24P	012000504044	1682989	3	6	8.1	APPROVED			
Segment: 5		Shelf: 23		w: 48.00 in		d: 22.00 in				
Location	Name	UPC	CRC	Facings	Capacity	DOS	ITEM STATUS	TYPE		
54	NESTLE PURE LIFE OTHER 16.9Z 24P	068274934711	1972625	9	36	3.7	CORE	WHSE		

1042418 Fort Lee Class 6 Warm

Door: 6 of 6



Segment: 6		Shelf: 6		w: 48.00 in d: 22.00 in						
Location	Name	UPC	CRC	Facings	Capacity	DOS	ITEM STATUS	TYPE		
64	DASANI SPARKLING BLACK CHERRY 12 PK	049000065510	7169769	1	2	0	NEW APPROVED			
65	DASANI SPARKLING APPLE 12Z 12P	049000063899		1	2	0	NEW APPROVED			
66	DASANI SPARKLING BERRY 12PK	049000063776	7040245	1	2	0	NEW APPROVED			
67	DASANI SPARKLING LEMON 12PK	049000063813	7040246	1	2	0	NEW APPROVED			
68	DASANI SPARKLING LIME 12PK	049000063738	7040247	1	2	0	NEW APPROVED			
69	GLACEAU SMART WATER OTHER 50.7Z	786162507006	1757763	5	30	0	CORE			
Segment: 6		Shelf: 8		w: 48.00 in d: 22.00 in						
Location	Name	UPC	CRC	Facings	Capacity	DOS	ITEM STATUS	TYPE		
70	NESTLE PURE LIFE PURIFIED 128Z	068274346613	2199673	16	48	5.0	CORE	WHSE		
Segment: 6		Shelf: 15		w: 48.00 in d: 22.00 in						
Location	Name	UPC	CRC	Facings	Capacity	DOS	ITEM STATUS	TYPE		
70	NESTLE PURE LIFE PURIFIED 128Z	068274346613	2199673	16	48	5.0	CORE	WHSE		
Segment: 6		Shelf: 24		w: 48.00 in d: 22.00 in						
Location	Name	UPC	CRC	Facings	Capacity	DOS	ITEM STATUS	TYPE		
54	NESTLE PURE LIFE OTHER 16.9Z 24P	068274934711	1972625	9	36	3.7	CORE	WHSE		