



Enabling Unlimited Embedded Computing

FW-1109

Quick Setup Guide

Packing List

Description	QTY
FW-1109	1
Power Cable	1
Power Connector	1
Driver Disk	1
Rack Mount Ears	2
Case Stands	4
Rack Mount Screws	4
Drive Mounting Screws	4

Safety Warning:

The use and installation of this system should only be performed by professionals. Improper installation of any electronic device or electrical component can result in serious injury or death. Please make sure that all safety precautions are taken into account.

Install Guide

Step 1 - Inspect Contents



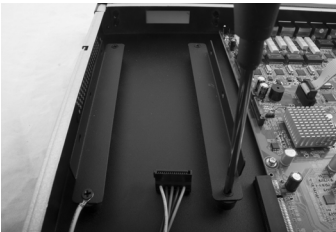
Unpack all package contents and inspect each component. Make sure all included parts and accessories are present.

Step 2 - Remove Top Cover



Using a phillips head screw driver, remove the four screws on the sides of the enclosure and two screws on the rear side of cover.

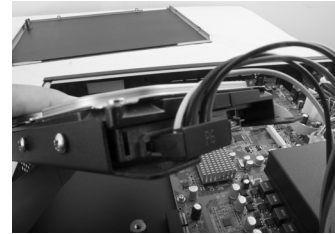
Step 3 - Mounting a 3.5" Drive



Remove the two drive trays from the enclosure by removing the screws at the base of the bracket.



Mount the 3.5" drive between the two drive trays.

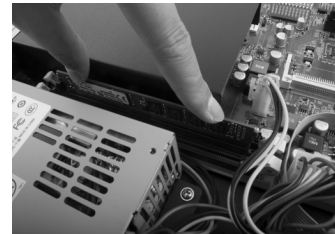


Connect the HDD cable to the 3.5" hard drive.



Mount the completed bracket to the enclosure.

Step 4 - Install Memory



Plug the memoria dimm into the slot.

Step 5 - Mounting

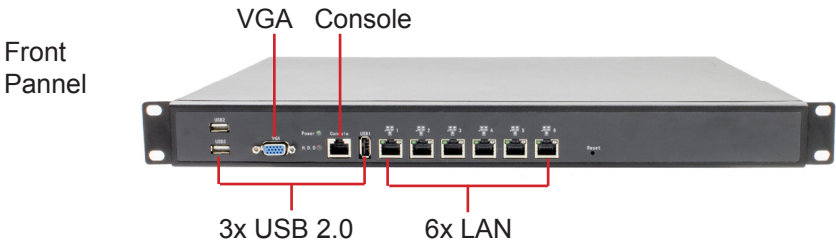


Mount the ears to the front side of the enclosure by securing the ears to the side of the enclosure with the included screws.

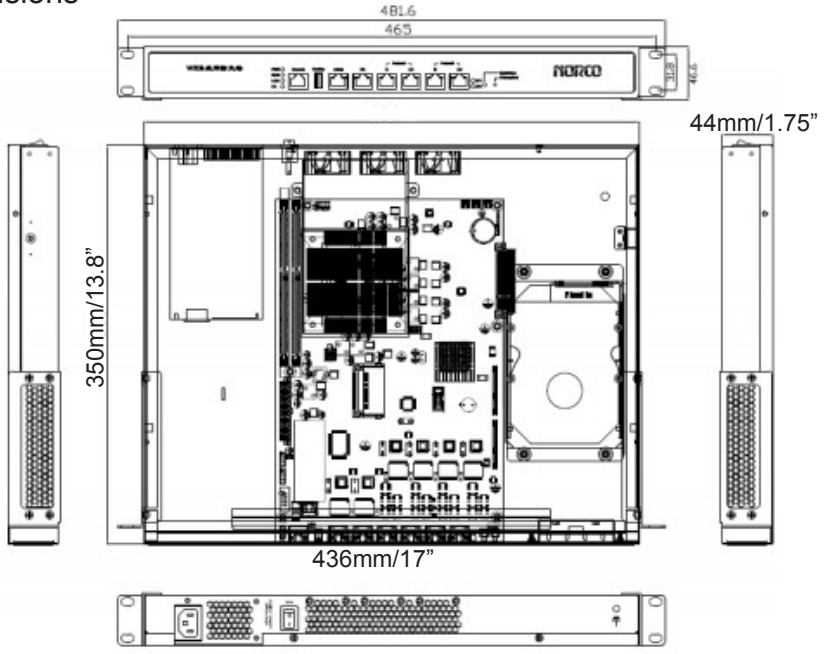
Step 6 - Hardware Installation Complete

Your system is now ready. Connect the power cable to a power source and press the power button on the front of the system.

Input / Output



Dimensions



21015 Commerce Pointe Drive, Walnut, CA 91789
www.habeyusa.com

Copyright©2014. Habey USA. All Rights Reserved. Version 1.