



# Product End-of-Life Disassembly Instructions

**Product Category:** Inkjet Printer

**Marketing Name / Model:**

HP Deskjet 1010 Printer & HP Deskjet Ink Advantage 1015 Printer /  
CX015A, CX015B, CX015C, CX015D, B2G82A, B2G83B, B2G82C, B2G79A, B2G79B, B2G79C, B2G80A, B2G81B

**Purpose:** The document is intended for use by end-of-life recyclers or treatment facilities. It provides the basic instructions for the disassembly of HP products to remove components and materials requiring selective treatment, as defined by EU directive 2002/96/EC, Waste Electrical and Electronic Equipment (WEEE).

## 1.0 Items Requiring Selective Treatment

1.1 Items listed below are classified as requiring selective treatment.

1.2 Enter the quantity of items contained within the product which require selective treatment in the right column, as applicable.

Item Description	Notes	Quantity of items included in product
Printed Circuit Boards (PCB) or Printed Circuit Assemblies (PCA)	Surface area >10 sq cm	6
Batteries	All types including standard alkaline and lithium coin or button style batteries	
Mercury-containing components	For example, mercury in lamps, display backlights, scanner lamps, switches, batteries	
Liquid Crystal Displays (LCD) with a surface greater than 100 sq cm	Includes background illuminated displays with gas discharge lamps	
Cathode Ray Tubes (CRT)		
Capacitors / condensers (Containing PCB/PCT)		
Electrolytic Capacitors / Condensers measuring greater than 2.5 cm in diameter or height	Within Power supply	1
External electrical cables and cords	Power cord	
Gas Discharge Lamps		
Plastics containing Brominated Flame Retardants		
Components and parts containing toner and ink, including liquids, semi-liquids (gel/paste) and toner	Include the cartridges, print heads, tubes, vent chambers, and service stations.	2
Components and waste containing asbestos		
Components, parts and materials containing refractory ceramic fibers		
Components, parts and materials containing radioactive substances		

## 2.0 Tools Required

List the type and size of the tools that would typically be used to disassemble the product to a point where components and materials requiring selective treatment can be removed.

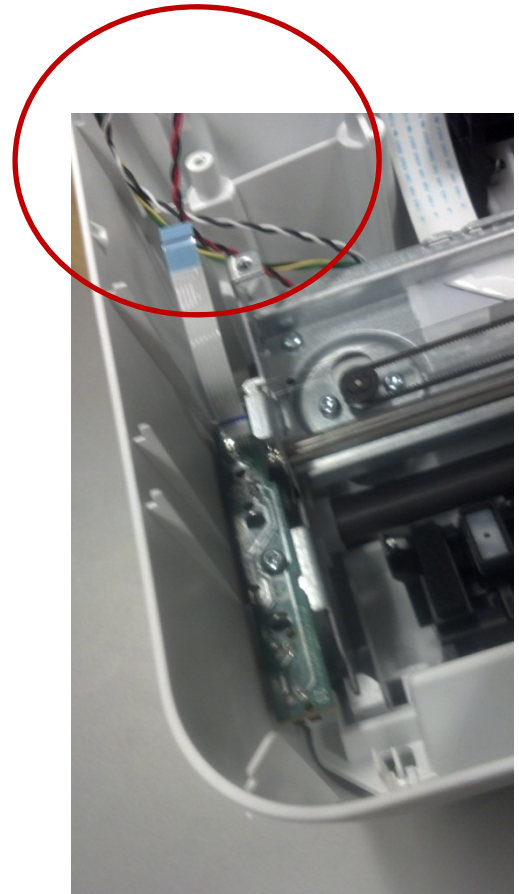
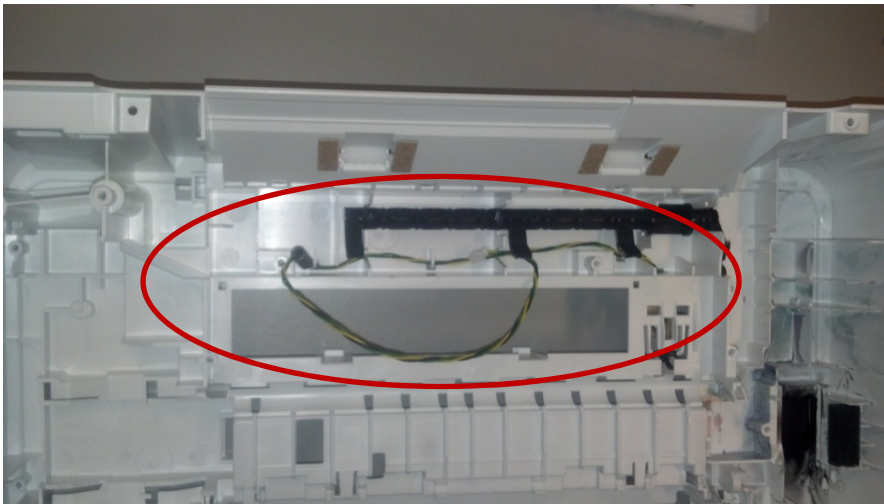
Tool Description	Tool Size (if applicable)
Torx screw driver	T6, T8, T10
Flat head screw driver	
Scissors	
Combination plier	

## 3.0 Product Disassembly Process

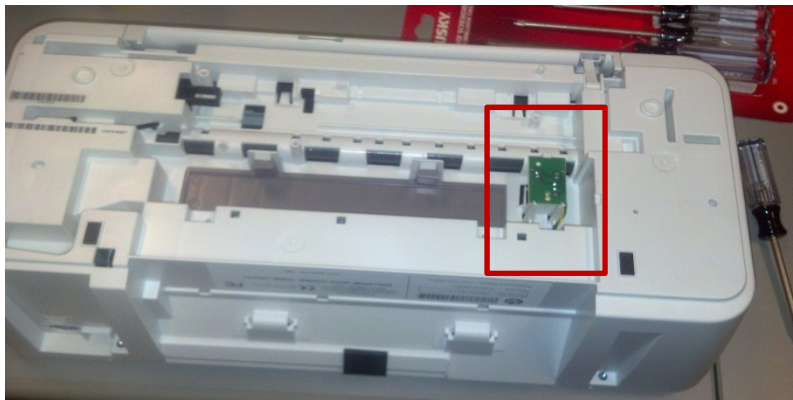
3.1 List the basic steps that should typically be followed to remove components and materials requiring selective treatment:

- 1) Remove ink cartridges
- 2) Remove case parts from printer and sort according to plastic part marking
- 3) Remove PCAs using Torx screw drivers and set aside (Figure-2)
- 4) Gently detach and disassemble LCD from the main case part
- 5) Gently pull out all wires (Figure-1)
- 6) Set aside external power supply
- 7) Remove printing mechanism from printer base and disassemble (Figure-3)
- 8) Remove any remaining PCAs from the printer base and chassis (Figure-3),(Figure-1)

**Figure 1- Gently pull out any internal wires (circled)**



**Figure 2- Remove PCAs using torx drivers and set aside, making sure to remove small PCA from printer base ( shown within red boxes). Gently pull out any wires attached (shown within blue circle)**



**Figure 3: Remove printing mechanism from base (shown within red box). Remove PCAs from base (shown within blue circles).**

