

# HP Officejet 100/150

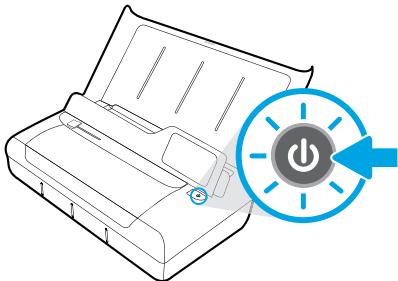


## Install the HP 1200w NFC/Wireless Mobile Print Accessory

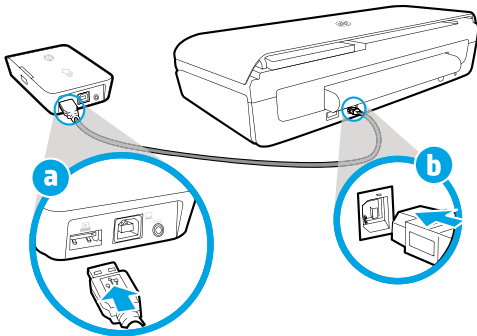
For more information about the wireless mobile print accessory, visit [www.hp.com/go/1200wSupport](http://www.hp.com/go/1200wSupport).

### To connect the wireless mobile print accessory while using power from the printer

1. Make sure the printer you are connecting is turned on.



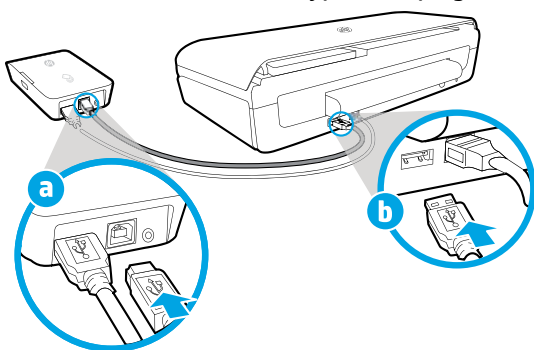
2. Using the USB cable provided, connect the wireless mobile print accessory and the printer.
  - a. Connect one end (type A flat plug) of the USB cable to the USB host port of the wireless accessory.
  - b. Connect the other end (type B rounded plug) of the USB cable to the USB port of the printer.



3. Using an additional USB cable (not provided), power the wireless mobile print accessory using power from the printer.

You would need an additional USB cable (not provided with the wireless accessory).

- a. Connect one end (type B rounded plug) of the second USB cable to the USB device port of the wireless accessory.
- b. Connect the other end (type A flat plug) of the second USB cable to the USB host port of the printer.



## Scan to find out more

Standard data rates may apply. Might not be available in all languages.

### HP Officejet 100/150



[www.hp.com/go/OJ100\\_150](http://www.hp.com/go/OJ100_150)

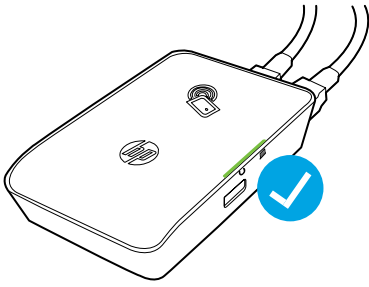
### HP 1200w NFC/Wireless Mobile Print Accessory



[www.hp.com/go/1200wSupport](http://www.hp.com/go/1200wSupport)

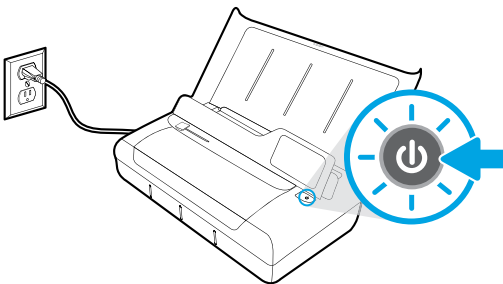
The information contained herein is subject to change without notice.

4. Check the status light of the wireless mobile print accessory.  
Green light means that the wireless accessory is working properly.

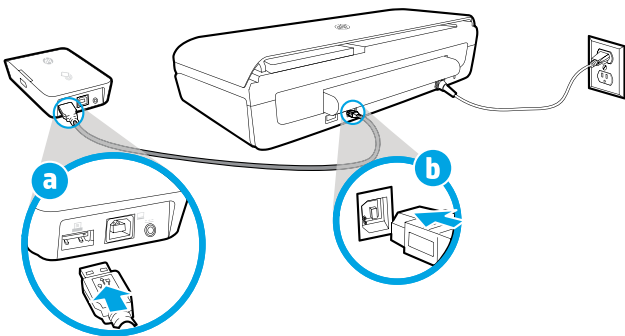


## To connect the wireless mobile print accessory while using an alternating current power

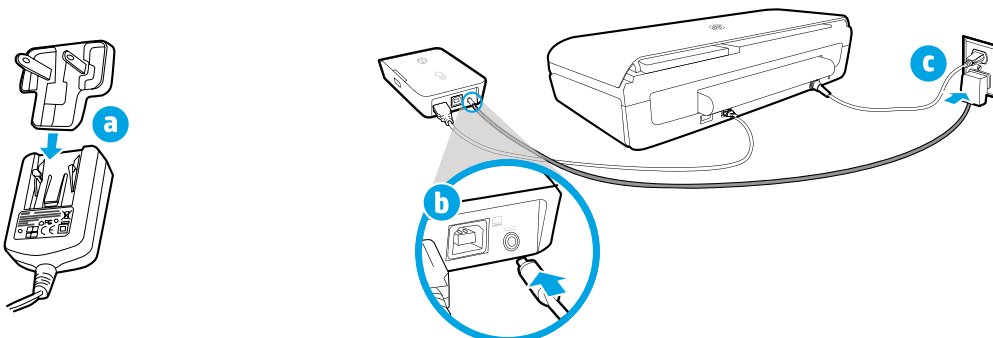
1. Make sure the printer you are connecting is turned on.



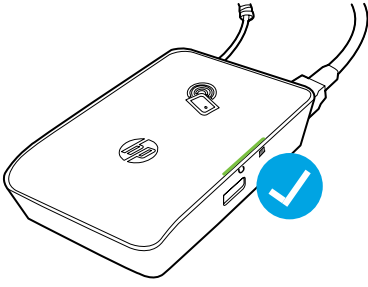
2. Using the USB cable provided, connect the wireless mobile print accessory and the printer.
  - a. Connect one end (type A flat plug) of the USB cable to the USB host port of the wireless accessory.
  - b. Connect the other end (type B rounded plug) of the USB cable to the USB port of the printer.



3. Power the wireless mobile print accessory.
  - a. Connect the power adapter plug to the power adapter.
  - b. Connect one end of the power cable to the wireless accessory.
  - c. Connect the other end of the power cable to the wall power outlet.



4. Check the status light of the wireless mobile print accessory.  
Green light means that the wireless accessory is working properly.



### Using the wireless mobile print accessory as a USB pass-through between the printer and your computer

You can also use the wireless accessory as a USB pass-through between the printer and your computer.

You would need an additional USB cable (not provided with the wireless accessory).

- a. Connect one end (type B rounded plug) of the second USB cable to the USB device port of the wireless accessory.
- b. Connect the other end (type A flat plug) of the second USB cable to the USB host port of the computer.

