

Brochure

The world best selling personal laser printer is now much more cost effective*

HP LaserJet Pro P1102 Printer series



* Based on HP duo-pack toner

Choose a world leader, choose HP LaserJet.

When choosing a laser printer for your home or business use, don't settle for anything but the best. Count on a world leader¹ to deliver:

1. Superb print quality and performance
2. Greater efficiency
3. Energy savings
4. Lower maintenance costs



Place your trust in a world leader for 10 straight years¹ (from 2002 to 2012)

IDC 2012 places HP as No. 1 Worldwide and Asia Pacific in terms of units shipped for Laser Single Function and Multifunction market for 10 straight years from 2002 to 2012¹.



*Source: IDC Worldwide Quarterly HCP Tracker Q4 2012.

Trust in a multiple-award winner

HP LaserJet Printers and Multifunction Printers have also won numerous awards from technology publications around the world.



Top 5 low-cost black and white laser printers PC World, Australia

HP LaserJet Pro P1102w Printer

HP LaserJet Pro M1212nf MFP

September 2010



Editorial's choice PC Adv, Taiwan

HP Mono LaserJet

5 June 2010



The best product in 2010 PC Magazine, Vietnam

HP Black and White Laser, Multifunction Laser, Colour Laser

23 June 2010

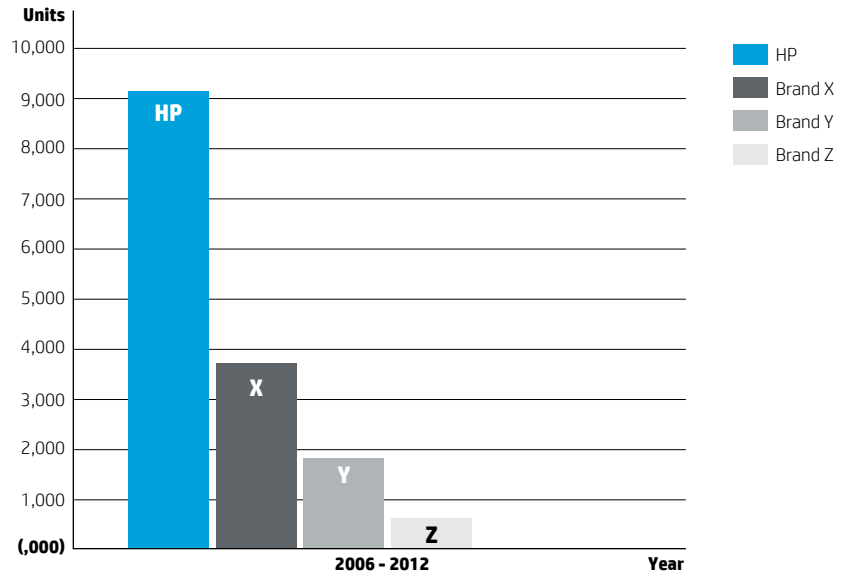
¹ #1 Worldwide and Asia Pacific in terms of units shipped for Laser Single Function and Multifunction market from 2002 - 2012. **Source:** IDC Worldwide and Asia Pacific Quarterly HCP Tracker Q4 2012.

Lower cost without sacrificing quality

Ideal for home or small businesses that need affordable prints without sacrificing quality and performance, the HP LaserJet Pro P1102 Printer series is the world's most energy efficient printer² that also delivers professional-quality print documents with ease.

Award-winning excellence

The smartest choice out there – The HP LaserJet Pro P1102 Printer series is the top selling personal laser printer in the industry, and the best-selling printer of its class in Asia Pacific from 2006 – 2012³.



HP LaserJet Pro P1102 Printer sales compared with top selling personal laser printers in the industry.

Best in class professional printing quality



Sharper prints, more readable text

HP Monochrome Toner technology produces sharper images and crisp text.



Optimised print results every time

“Smart” chip intelligence built into HP Monochrome Toner Cartridges enables interactive communication between cartridge and printer so that adjustments can be made to optimise print quality.

² Based on competitive TEC data found in energystar.gov, eu-energystar.org, the HP Carbon Footprint Calculator at hp.com/go/carbonfootprint and manufacturers' published data sheets.

³ Data is taken from IDC CQ4'12 tracker.

3x
Lower Failure Rate

>5yrs
Working Life

1-for-1 exchange

Smart install



HP AirPrint™

Legendary HP reliability and service

Count on a printer that works

With a significantly lower failure rate of up to 3 times less⁴ than most consumer printers, the HP LaserJet Pro P1102 Printer series won't put your business on hold.

Productivity that lasts

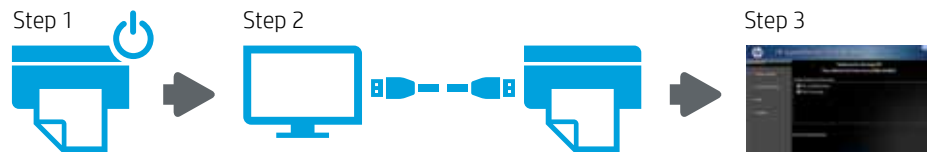
HP laser printers are well-known for their legendary long working life, with printers still in use that are more than 5 years old⁵.

Built for your peace of mind

HP offers a 1-for-1 exchange for this device within 1 year's warranty for any manufacturing faults⁶.

HP Smart Install

Install your HP LaserJet Pro P1102 printer in just 3 simple steps



HP AirPrint™

Share your print resources with ease

The optional wireless model supports wireless printing for multiple users, and AirPrint™ technology allows you to print directly from Apple iPad®, iPhone® and iPod Touch®⁷.

Lower cost of ownership

HP LaserJet pays you back

Think long term investment when you choose HP over other printer brands. Here are some calculations that show that the longer you stay with HP, the more you save:

- Save more on energy costs over time with HP LaserJet Pro P1102w Printer.
- Save up to 70% more energy costs over other printer brands within just 1 year^{8,9,10}.

HP LaserJet Pro P1102w Printer vs. Brand X^{8,9,10}

	1 Year Electric Cost (USD)	3 Years Electric Cost (USD)	5 Years Electric Cost (USD)
Brand X	\$8	\$24	\$40
HP LaserJet Pro P1102w Printer	\$2	\$7	\$11
Total Cost Savings	\$6	\$17	\$29

HP LaserJet Pro P1102w Printer vs. Brand Y^{8,9,10}

	1 Year Electric Cost (USD)	3 Years Electric Cost (USD)	5 Years Electric Cost (USD)
Brand Y	\$7	\$20	\$33
HP LaserJet Pro P1102w Printer	\$2	\$7	\$11
Total Cost Savings	\$5	\$13	\$22

Keep printing effortlessly

Hassle-free cartridge replacements

HP Laser Print cartridges are integrated (2-in-1 toner + drum) for easy and mess-free replacement, while other printers can require several replacement units which add to much higher cost.

Plug-and-print with ease, no installation CD needed

Install this printer automatically to your PCs, laptops and netbooks and start printing in as little as two minutes! No more installation CDs or downloaded drivers – simply plug the printer in and start printing with HP Smart Install¹¹.

⁴ Based on 1H11 SEA consumer support report.

⁵ IDC Asia/Pacific Printer Consumables Tracker, 2011 Q1, May 2011.

⁶ Warranty may vary according to countries. Please check with your local HP sales office or your nearest HP authorised dealer for details.

⁷ Supports iOS 4.2 devices (iPad®, iPhone® 4, iPhone® 3GS, iPod touch® 3rd, 4th generation) that support multi-tasking. Works with HP ePrint-enabled printers and all-in-ones. AirPrint™ and iOS 4.2 and later devices require an 802.11 "Wireless network" connection to the printer. Wireless performance is dependent upon physical environment and distance from the access point. AirPrint and the AirPrint Logo are trademarks of Apple® Inc. iPad, iPhone, and iPod touch are trademarks of Apple Inc., registered in the U.S. and other countries.

⁸ Savings may vary by country.

⁹ The above is calculated based on the HP Carbon Footprint Calculator for printing. hp.com/large/ipg/ecological-printing-solutions/carbon-footprint-calc.html

¹⁰ Calculation is based on current electricity cost and is subject to change without prior notice.

¹¹ HP Smart Install works with Windows only.



We know your concerns

We know that many factors such as pricing, running costs, and performance are important to you, and here are some answers that should help address these concerns.

Hardware costs

With energy-saving technologies and value-added features, this HP LaserJet printer saves you more money over time than most other brands.

50% Less energy



Auto On/Off

- HP Instant-on Fuser uses 50% less energy¹² to start printing the first page of every job. This adds up to huge daily energy savings every month.
- HP Auto-On/Auto-Off technology¹³ with Auto-Off helps to get up to 50% energy savings.
- This printer's high energy efficiency meets strict ENERGY STAR® guidelines.

Supplies costs

This HP LaserJet printer provides consistently reliable results and substantial savings with high-capacity cartridges.

- Only Original HP Toner Cartridges work flawlessly with your HP LaserJet printer to deliver perfect results first time and every time¹⁴, helping you cut down on supplies wastage costs due to reprints.
- Based on HP calculations which leverage the findings from a QualityLogic study, businesses who use remanufactured cartridges may incur up to 2 times¹⁵ more in total costs (for mature markets; 31%¹⁶ for emerging markets) than if they were to use Original HP Monochrome LaserJet cartridges due to reprinting pages, fixing problem cartridges and time wasted.

Maintenance costs

This HP LaserJet printer is a leader in reliability with lower maintenance required, and no hidden costs.

- The HP LaserJet Pro P1102 Printer series has been proven to have a significantly lower failure rate of up to 3 times less than most consumer printers¹⁷.
- HP offers a 1-for-1 warranty exchange for this device within 1 year for any manufacturing faults¹⁸.



HP LaserJet Pro P1102 printer cartridge
(Single replacement unit)



Brand X
(Toner cartridge and drum unit require separate replacement)

HP LaserJet Print toner cartridges are easy to replace and mess-free, with only the HP toner cartridge needing to be replaced (unlike other printers which can require several costly replacement units)¹⁹.

¹²HP printer results are based on internal HP testing using the ENERGY STAR® program's Typical Electricity Consumption (TEC) methodology. Competitive printer data was collected at energystar.gov in June 2010. All data is based on 115V and extended to 1 year. Individual product configurations and usage will affect power consumption.

¹³HP Auto-Off capabilities subject to printer and settings. Compares energy consumption of HP LaserJets with HP Auto-Off Technology to top competing models based on market share as of September 2010. Energy consumption based on HP internal testing using the ENERGY STAR® program's Typical Electricity Consumption (TEC) method or TEC value found at energystar.gov/eu-energystar.org using greatest TEC value reported. Actual power usage may vary.

¹⁴A QualityLogic 2008 study, commissioned by HP, compared Original HP LaserJet toner cartridges with remanufactured toner cartridges sold in China and India for the HP LaserJet 2300 and 4350 printers, HP 10A and 42A. Out of the HP cartridges tested, they worked the first time and everytime. For details, qualitylogic.com/tonertestAP.pdf.

¹⁵HP cost calculation based on the average results of the 2008 QualityLogic Monochrome Toner Reliability Comparison Study (qualitylogic.com/tonertestAP.pdf). Calculation includes paper, cartridge replacement and labour for reprints. Assumes equal number of pages for external, internal and individual use. Labour rate from a Mercer 2007/08 Global Pay Study (average for: KR, SG, AU and HK). Assumes purchase price for HP cartridge is US\$115 and 50 percent lower purchase price for a remanufactured cartridge. Usage based on 123,101 pages per year. Actual prices, costs and savings may vary.

¹⁶HP cost calculation based on the average results of the 2008 QualityLogic Monochrome Toner Reliability Comparison Study (qualitylogic.com/tonertestAP.pdf). Calculation includes paper, cartridge replacement and labour for reprints. Assumes equal number of pages for external, internal and individual use. Labour rate from a Mercer 2007/08 Global Pay Study (average for: China and India). Assumes purchase price for HP cartridge is US\$70 and 57 percent lower purchase price for a remanufactured cartridge. Usage based on 160,118 pages per year. Actual prices, costs and savings may vary.

¹⁷Based on 1H11 SEA consumer support report.

¹⁸Warranty may vary according to countries. Please check with your local HP sales office or your nearest HP authorised dealer for details.

¹⁹Comparing HP LaserJet Pro P1102 with a top printer brand in the industry, which requires replacement of the toner cartridges and drum unit.

Product walkabout



Smart Install²⁰



Print speed of up to
18 ppm²¹



Wireless-enabled²²



AirPrint™²³



Instant-on
Technology²⁴



Print on a wide range of paper sizes
– from 3.5 x 5 inches photo paper to
8.5 x 14 inches paper



HP Smart
Web Printing²⁵

²⁰HP Smart Install works with Windows only.

²¹Measured using ISO/IEC 24734, excludes first set of test documents. For more information, see hp.com/go/printerclaims. Exact speed varies depending on the system configuration, software application, driver, and document complexity.

²²Wireless-enabled printing is available only on the HP LaserJet Pro P1102w.

²³Supports iOS 4.2 devices (iPad®, iPhone® 4, iPhone® 3GS, iPod touch® 3rd, 4th generation) that support multi-tasking. Works with HP ePrint-enabled printers and multifunction printers. AirPrint™ and iOS 4.2 and later devices require an 802.11 “Wireless network” connection to the printer. Wireless performance is dependent upon physical environment and distance from the access point. AirPrint and the AirPrint Logo are trademarks of Apple® Inc. iPad, iPhone, and iPod touch are trademarks of Apple Inc., registered in the U.S. and other countries.

²⁴Instant-on Technology claim based on comparison with products that use traditional fusing.

²⁵To use this feature, you need Microsoft Internet Explorer 6.0–8.0.

Technical specifications



**HP LaserJet Pro P1102 Printer
(CE651A)**



**HP LaserJet Pro P1102w Printer
(CE657A)**

Print	
Monthly duty cycle ¹	Up to 5,000 pages
Resolution	Up to 600 x 600 x 2 dpi (1200 dpi effective output); HP FastRes 600, HP FastRes 1200 ²
Speed ³ (A4)	Up to 18 ppm (A4)
First-page-out ⁴ (A4)	As fast as 8.5 seconds
Printer language	Host-based printing
Paper handling	
Output tray	100-sheet face-down bin
Input tray	150-sheet tray
Duplex print	Manual (driver support provided)
Memory	
	2 MB 8 MB
Operating system compatibility⁵	
	Microsoft® Windows®/ Macintosh/Linux®
Networking/connectivity	
	1 Hi-Speed USB 2.0 port 1 Hi-Speed USB 2.0 port; WiFi 802.11b/g
Dimensions (w x d x h)	
	349 x 238 x 196 mm
Weight	
	6.35 kg
Toner	
	HP LaserJet CE285A Black Print Cartridge



¹ Duty cycle is defined as the maximum number of pages per month of imaged output. This value provides a comparison of product robustness in relation to other HP LaserJet or HP Color LaserJet devices, and enables appropriate deployment of printers and MFPs to satisfy the demands of connected individuals or groups.

² HP FastRes 1200 provides the best print quality setting for this device; choose HP FastRes 600 for fast printing.

³ Approximate figures. Exact speed will vary depending on the system of configuration, software program print and copy speeds may vary according to the complexity of the document and type of output.

⁴ For both Ready and PowerSave modes. Figure is approximate for typical office documents and may vary according to system or network configuration and document complexity.

⁵ For full details, please refer to datasheets.

Sign up for updates
hp.com/go/getupdated

© Copyright 2013 Hewlett-Packard Development Company, L.P. The information contained herein is subject to change without notice. The only warranties for HP products and services are set forth in the express warranty statements accompanying such products and services. Nothing herein should be construed as constituting an additional warranty. HP shall not be liable for technical or editorial errors or omissions contained herein.

ENERGY STAR® and the ENERGY STAR® mark are U.S. registered marks. Microsoft, Windows, and Windows XP are U.S. registered trademarks of Microsoft Corporation. Windows Vista is either a registered trademark or trademark of Microsoft Corporation in the United States and/or other countries.

Printed in Singapore, April 2013

