

INSTAX MINI 90 NEO CLASSIC

High performance flash

AE light receptor

Power switch
Shutter button
The power switch and shutter button are located together enabling quick power up and picture taking.

MODE dial
Rotating the dial switches modes and functions while looking through the viewfinder.

Tripod socket
Using the tripod socket with your instax provides added stability critical for use in double exposure and bulb modes (tripod sold separately).

Strap eyelets (left and right)
Strap eyelet can accommodate many types of straps. Fujifilm strap included.

Horizontal shooting shutter button

Large LCD
The display shows the current mode and number of shots left.

Mode/function switching buttons
These buttons select shooting modes and functions.

- A Macro
- B Brightness control
- C Self timer
- D Flash ON/OFF
- E Mode button
 - Party
 - Kids
 - Landscapes
 - Double exposure
 - Bulb

Battery
Powered by a rechargeable battery.

SHARE AN ORIGINAL



Specifications



Film : FUJIFILM Instant Color Film "instax mini" (separately available)
Film size : 86mm x 54mm
Picture size : 62mm x 46mm
Lens : Move in/out type lens, 2 components, 2 elements, f=60mm, f=12.7
Viewfinder : Real image finder, 0.37x, with target spot parallax adjustment for macro mode
Focusing : Motor-driven 3-range switching, 0.3m-∞ (macro mode: 0.3m-0.6m, normal mode: 0.6-3.0m, landscape mode: 3.0m-∞)
Shutter release : Programmed electronic shutter release, 1.8 - 1/400 sec. shutter speeds (macro mode aperture automatically fixed at F22, bulb mode: maximum 10-second shutter open time)
Exposure control : Automatic, LV5.0 - 15.5 (ISO800), lighten-darken control +2/3EV, +1EV
Film feed method : Automatic

Flash : Automatic electronic flash (with brightness adjustment function), forced firing mode (with brightness adjustment function), flash off mode, red eye reduction mode.
Liquid Crystal Display (LCD) : Exposure counter (number of remaining shots), Macro mode, Brightness controls, Self timer, Flash ON/OFF, Mode button (Party/Kids/Landscape/Double exposure/Bulb)
Power supply : NP-45A lithium-ion battery. Charger capacity: 10 film packs (based on test conditions)
Accompanying items : Shoulder strap, Limited product warranty, Li-ion battery NP-45A, Battery charger
Dimensions & weight : 113.4 x 91.9x57.2 mm, 296 g (excluding the battery strap and film)

INSTANT COLOR FILM instax mini

FUJIFILM Instant Color "instax mini"
Write your own personal message directly below the photo image!



- Images included in these sales materials include feature and photo simulations.
- Specifications are subject to change without notice.
- FUJIFILM, INSTAX, EXPECT INNOVATION and SHARE AN ORIGINAL are trademarks of FUJIFILM Corporation and its affiliates.
© 2013 FUJIFILM North America Corporation. All rights reserved.

| SAP Material Code | Material Description | Unit UPC code | Unit Dimensions | Unit Weight | Case UPC Code | Case Dimensions | Case Weight | Min. Order Qty. |
|-------------------|------------------------------------|---------------|--------------------------|-------------|----------------|------------------------|-------------|-----------------|
| 16404571 | Instax™ Mini 90 Neo Classic Camera | 074101102314 | 3.61"l x 2.25"w x 4.50"h | 0.65 LBS | 10074101102311 | 23"l x 8.86"w x 8.11"h | 7 LBS | 10 pcs. |

FUJIFILM
Value from Innovation
FUJIFILM North America Corporation

fujifilmusa.com



Ref. No. MINI 90 - 2013



instax™
mini 90
NEO CLASSIC

Instant Camera

FUJIFILM

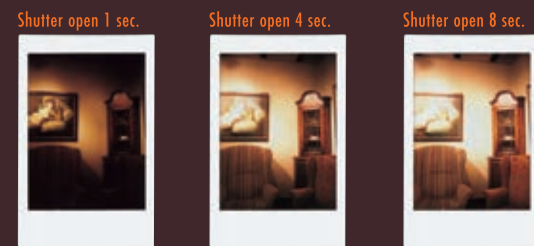
instax
mini 90
NEO CLASSIC
Instant Camera

A classic look, the instax mini 90 offers advanced features, such as bulb and double exposure modes for amazing analog effects. The instax mini 90 NEO CLASSIC also has a new macro mode and high performance flash features for control you would never expect from an instant camera.

AMAZING NEW INSTAX SHOOTING MODES

BULB SHOOTING MODE

In bulb exposure mode, the shutter remains open up to 10 seconds. By keeping the button depressed, it will enable you to create night views and light streaks.



Double exposure mode



DOUBLE EXPOSURE MODE

The double exposure mode lets you superimpose two different images in one photo for a fantastic analog effect. A truly one-of-a-kind image.



Note: If flash off indicator blinks - hold camera steady.

ADVANCED CAPABILITIES DELIVER IMPRESSIVE RESULTS AND OPPORTUNITIES



IMPROVED USABILITY

Modes and functions are easily selected either on the back or with the dial around the lens.



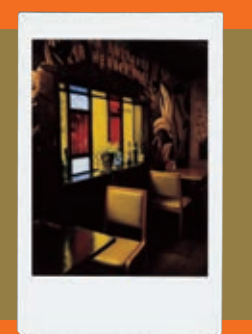
HIGH PERFORMANCE FLASH

The high performance flash emits the ideal amount of light and can be finely adjusted for distance and ambient brightness, helping to optimize the exposure.

FLASH OFF MODE

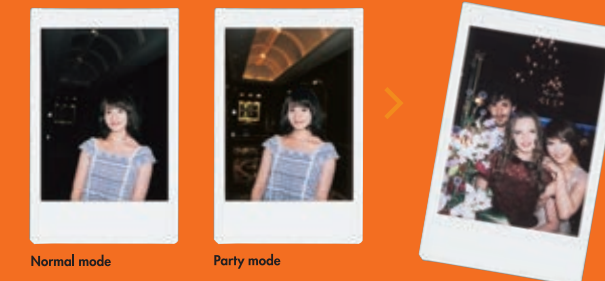
The flash off mode is perfect for places where flashes are prohibited, or when adding a natural ambience to the shot.

Note: If the flash off indicator blinks - hold camera steady.



PARTY MODE

The party mode lights the backgrounds as well as the subject.



KIDS MODE

This mode is great for capturing fast-moving subjects like kids and animals.



This mode is effective in shooting in low light conditions!

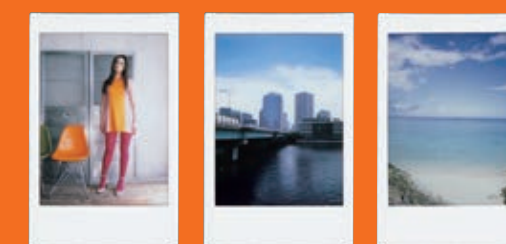
BRIGHTNESS MODE

You can add low-key or high-key effects.



LANDSCAPE MODE

This is best suited to target a distant subject (Beyond 3m).



MACRO MODE

The newly-equipped, macro mode lets you capture stunning close-up photography.

