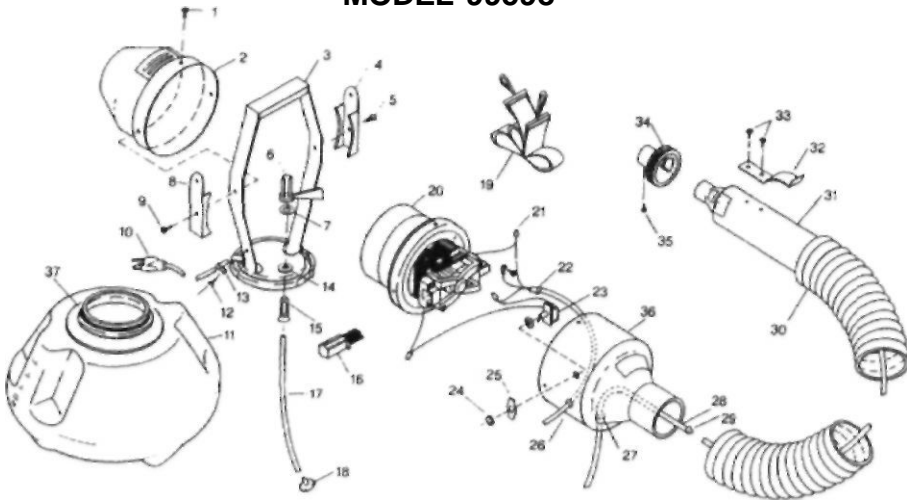


## MODEL 99598



### Parts List for Model 99598

Figure No.	Part No.	Description
1	802-162	Housing Screw
2	952-650	Intake Housing
3	952-602	Handle and Frame Assembly
4 & 8	953-692	Strap Hangers
5 & 9	802-117	Frame Screws
6	953-050	Valve Lever
7	802-378	Spring Washer
10	Available in Cord Kit Only	Cord
11	952-552	Canister
12	Available in Cord Kit Only	Cord Clamp Screw
13	Available in Cord Kit Only	Cord Clamp
14	953-000	Grommet (2 required)
15	955-570	Pressure Tube
16	953-500	Brush Kit (2 required)
17 & 28	926-670	Supply Kit (Clear)
	954-320	Supply Tube (Black)
18	941-380	Intake Strainer
19	955-020	Carrying Strap
20	Available in Motor Kit Only	Motor
21	Available in Motor Kit, Switch Kit Only	Wire Connector
22	Available in Switch Kit Only	Cord Stop
23	Available in Switch Kit Only	Switch
24	Available in Switch Kit Only	Switch Plate Nut
25	Available in Switch Kit Only	Off/On Rate
26	950-460	Grommet
27	801-276	Push Nut
28	954-330	Adapter (to connect supply lube only)
30	944-835	Flex Hose
31	Available in Nozzle Outlet Kit Only	Outlet Nozzle
32	953-140	Storage Hook
33	802-043	
34	952-630	
35	801-796	Outlet Housing
36	941-400	Canister Gasket
37	941-492	Cord Kit
NI	944-820	Motor Kit (110 Volt)
NI	944-830	Switch Kit
NI	944-825	Outlet Nozzle Kit (Clear)
NI	944-840	Outlet Nozzle Kit (Black)
NI	944-856	

Outlet Nozzle Kit includes. Outlet nozzle, adjustable hub and supply tube with adapter

\*NI - Not Illustrated.

SIGN OF THE BEST BUY



## OPERATING INSTRUCTIONS ATOMIST ELECTRIC SPRAYER Models: 99598 and 99599

### SPECIAL NOTICE TO USERS

Damage in transit, wearing of nozzles or other parts, temperature factors and manners of use may effect the performance of this sprayer. Regular maintenance, approved calibration procedures and repeated testing are necessary for safe and satisfactory results. Users must determine if the application is proper for the chemical being used and the conditions in which it is being applied.

**BEFORE USE, READ THIS MANUAL COMPLETELY  
KEEP MANUAL FOR FUTURE REFERENCE**

### WARNINGS:

- **DO NOT** operate this sprayer in small, enclosed areas, or areas where flammable or foreign material could be sucked into the air intake.
- **DO NOT** overheat the motor. Be sure air intake is kept open and clean.
- **DO NOT** use this sprayer for paint spraying.
- **DO NOT** spray gasoline or other flammables.
- **DO NOT** alter the sprayer.
- **DO NOT** store chemicals in canister
- **ALWAYS READ AND FOLLOW** instructions for chemical to be used.
- **IF SPRAY PATTERN BECOMES IRREGULAR**, turn sprayer off, clean the intake strainer and clean the screen.
- **IF CORD BECOMES DAMAGED**, it must be replaced before use.
- **DO** Clean sprayer thoroughly after each use.

### SERVICE POLICY:

Do not attempt service or parts replacement beyond installation instructions. Service to the motor requires special equipment and should be performed by a qualified technician. Units are carefully tested after service by factory personnel. For this reason, you always return your sprayer to H.D. Hudson Manufacturing Co. When returning the sprayer, clean thoroughly. Units containing chemicals will not be accepted and returned to the sender freight collect. Enclose a note describing the problem and send to:

HUDSON®

H.D. Hudson Manufacturing Co.

200 W. 2nd St., Hastings, MN 55033-1100

1-800-745-2392 [pro@hdhudson.com](mailto:pro@hdhudson.com) [www.hdhudson.com](http://www.hdhudson.com)

**NOTE: Buyer assumes all responsibility for safety and use with instructions.**

## 99599 OPERATION

Fill the canister with the desired amount of spray material. Reposition the sprayer on canister top and snap clamp so it fits tightly. Check the switch to make sure it is "off" before plugging into a 110/120 volt AC outlet. Once operating, the discharge rate of the sprayer may be adjusted by turning the discharge control.

**Spray Adjustment:** The 99598 has an adjustment range of 1.5 to 5.3 gallons/hr. Spray direction is variable through all degrees between 35 upward to 35 downward.

**Wettable Powders:** The 99598 sprays wettable powders at a maximum discharge rate of 5.3 gallons/hr. Preliminary testing is recommended to insure that desired rate is obtainable. Shake or agitate solution periodically to keep powders in suspension.

**Spray Patterns:** The 99598 atomizes 95% of its output of less than 50 microns. Average particle size is 20 microns.

**After Use:** To store the 99598 or change spray materials, detach the sprayer from the canister and turn it "on" to flush out any spray material. The sprayer should be emptied of any unused spray solution and the canister should be washed after which the unit should be reassembled. After use with wettable powders, detach the canister, immerse the supply tube in clear water and flush until no residue can be seen in the supply tube. Wash the canister thoroughly.

## 99598 OPERATION

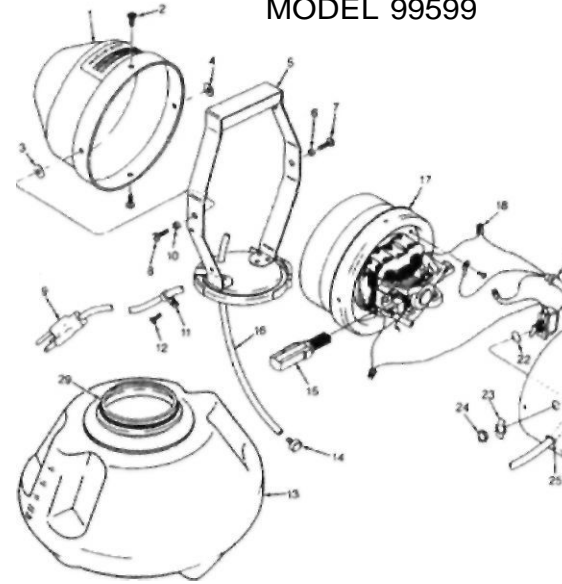
Fill the canister with the desired amount of spray material. Reposition the sprayer on the canister top and snap clamp it fits tightly. Check the spray selector valve on the tube that extends from the motor housing to the tank cover plate and set it according to the desired spray pattern. "Heavy" setting is achieved with valve lever turned full left (counter-clockwise.) This covers the valve opening and pressurizes the canister. Heavy setting produces a dense wetting spray ideal for application of residual or surface type spraying. "Fine" setting is achieved by turning valve lever full right (clockwise.) This opens the valve and allows air not utilized in spray discharge to escape. Fine setting produces ultra fine particles ideal for flying insect control. Check the switch to make sure it is "off" before plugging into a 110/120 Volt AC outlet for 99599. Once operating, the discharge rate may be adjusted by turning the discharge control at end of hose.

**Spray Adjustment:** The "fine" (unpressurized) setting has an adjustment rate of 1.5 to 3.5 gallons/hr. On "heavy" pressurized setting, the adjustment rate is 6 to 14 gallons/hr. Spray direction is variable through manipulation of the discharge hose.

**Wettable Powders:** Preliminary testing is recommended to insure that desired rate is obtainable. Shake or agitate solution periodically to keep powders in suspension.

**After Use:** When the unit is turned "off" after spraying, siphoning action may continue for a moment, resulting in a solid stream of spray material. To prevent this, tip the nozzle up straight as you switch "off" the motor thus flushing spray solution remaining in the discharge line back into canister. To store the 99599 or change spray materials, detach the sprayer from the canister and turn it "on" to flush out any spray material- The sprayer should be emptied of any unused spray solution and the canister should be washed after which the unit should be reassembled. After use with wettable powders, detach the canister, immerse the supply tube in clear water and flush until no residue can be seen in the supply tube. Wash the canister thoroughly.

## MODEL 99599



## Parts List for Model 99599

FigureNo.	Part No.
1	952-650
2	Available in Housing Kit Only
3 & 4	Available in Housing Kit Only
5	952-602
6 & 10	Available in Housing Kit Only
7 & 8	Available in Housing Kit Only
9	Available in Cord Kit Only
11	Available in Cord Kit Only
12	Available in Cord Kit Only
13	952-552
14	941-380
15	953-500
16	927-730
17	Available in Motor Kit Only
18	Available in Motor Kit, Switch Kit and Housing Kit Only
19	Available in Switch Kit and Housing Kit Only
20	Available in Switch Kit Only
21	944-865
22	Available In Switch Kit Only
23	Available In Switch Kit Only
24	Available in Switch Kit Only
25	950-460
26	952-610
27	952-630
28	801-796
29	805-202
NI	946-705
NI	944-825
NI	944-820
NI	944-850

Housing kit includes 1 ea.: #1,14, 16, 21, 25, 26, 27, 28 plus other

**IF YOU HAVE QUESTIONS REGARDING YOUR  
PLEASE CALL 1-800-745-2392**