

# Start Here

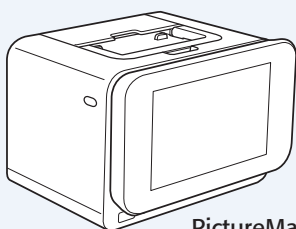


*Follow these steps to set up your PictureMate Show and print—no computer required!*

**Note:** To print from your computer, see the *Basics* book and your CD after completing these steps.

## 1 *Unpack*

PictureMate Show™ comes with all these items in the box.



PictureMate



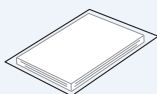
Basics book



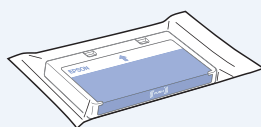
Printer Software CD



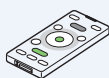
Output tray



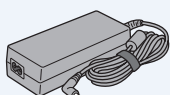
PictureMate photo paper



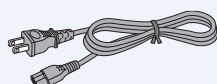
Initial PictureMate photo cartridge



Remote control



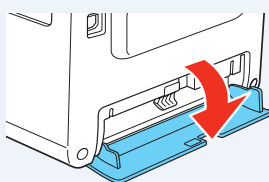
Power adapter



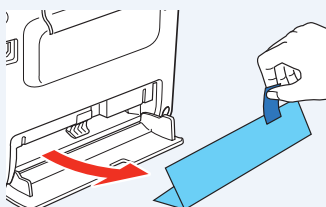
Power cable

**1** Remove all the tape and packing material from the outside of PictureMate.

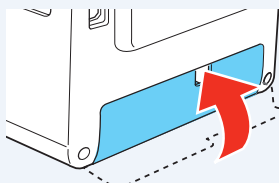
**2** Open the cartridge door on the back of PictureMate.



**3** Remove the packing material from inside the cartridge slot.



**4** Close the cartridge door.



\*412504400\*

## 2 Plug In and Turn On

1 Connect the power adapter to the back of PictureMate.

2 Connect the power cable to the power adapter.

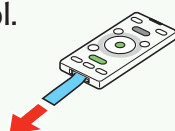
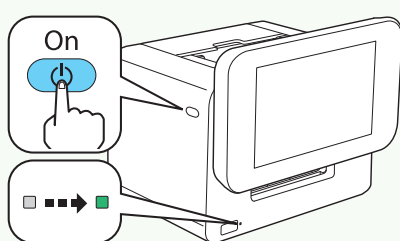
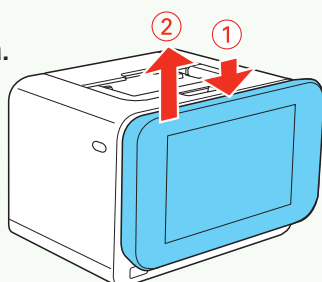
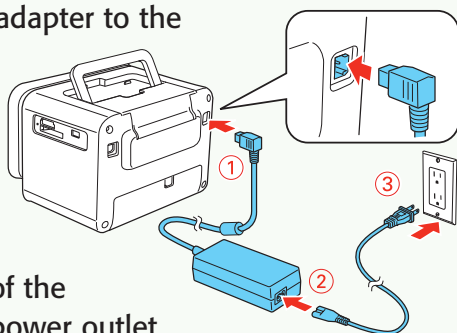
3 Plug the other end of the power cable into a power outlet.

4 Press down to raise the screen.

5 Press and hold the **On** button to turn on PictureMate.

6 Remove the tape from the remote control.

Now you can install your initial photo cartridge.



**Note:** The remote control will not work unless you first press the **On** button on the printer.

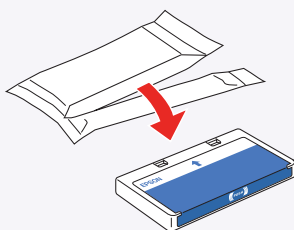
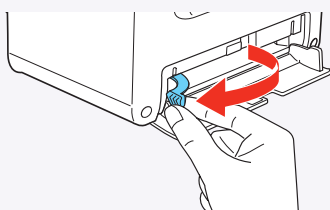
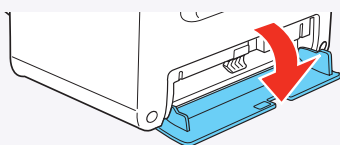
## 3 Install the Initial Photo Cartridge

1 Turn PictureMate around and open the cartridge door.

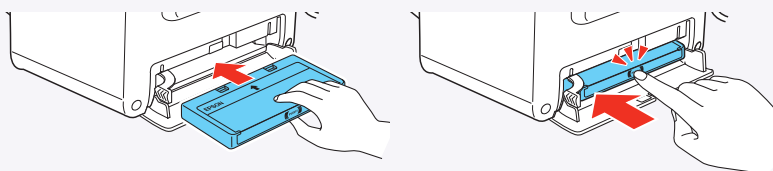
2 Slide the cartridge lever left to the **Release** position.

3 Remove the initial photo cartridge from its package.

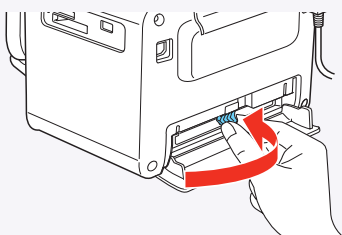
**Caution:** Do not install a different PictureMate cartridge for initial setup. Install only the initial photo cartridge that came with your PictureMate.



- 4** Slide the cartridge straight into the slot, label side up, until it clicks into place. It will not go in all the way.

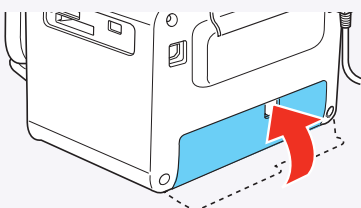


- 5** Slide the lever all the way right, to the **Lock** position.



- 6** Close the cartridge door.

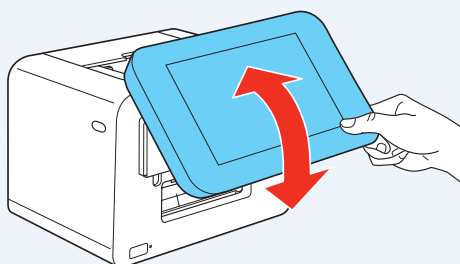
PictureMate charges the print head for 3 to 4 minutes.



- 7** When you see the **Charging complete** message on the screen, press **OK** on the remote control.

## 4 Set the Date and Time

- 1** Adjust the screen.



- 2** When you see this screen, use the arrows on the remote control to enter the date, then press **OK**.



- 3** Use the arrows on the remote control to select the time format and enter the time. Then press **OK**.



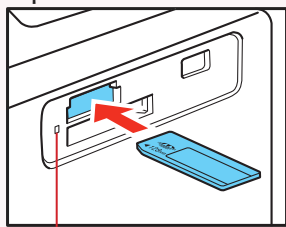
- 4** Press **OK** on the next 2 screens.

Turn over... ➔

# 5 *Insert a Memory Card*

- 1 Remove the memory card containing photos from your digital camera.
- 2 Insert your memory card into the correct slot on PictureMate.

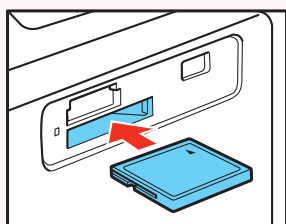
Top



Memory card light

SD™ (Secure Digital)  
SDHC™ (High Capacity)  
mini SD™ \* and mini SDHC\*  
micro SD\* and micro SDHC\*  
Sony Memory Stick® \*\*  
Memory Stick Duo™ \*  
Memory Stick Micro\*  
Memory Stick PRO™  
Memory Stick PRO Duo™ \*  
Memory Stick PRO HG Duo\*  
MagicGate™ Memory Stick\*\*  
MagicGate Memory Stick Duo™ \*

Bottom



Microdrive™  
CompactFlash® (Type I and II)

\* Adapter required

\*\* Maximum capacity 128MB

- 3 Push the card in until it stops (it won't go in all the way). The memory card light flashes and PictureMate tells you how many photos are on the card.

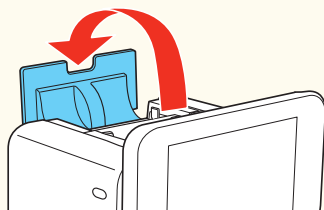
**Note:** Insert just one card at a time. PictureMate will not read multiple cards at once.

# 6 *Load Paper*

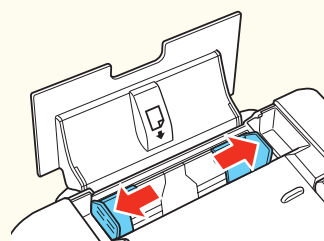
PictureMate comes with genuine Epson® glossy photo paper made especially for printing lab quality photos.

**Caution:** Don't load or print on plain paper; this may damage PictureMate.

- 1 Open the paper support.

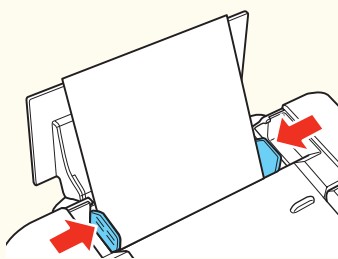


- 2 Slide out the edge guides.

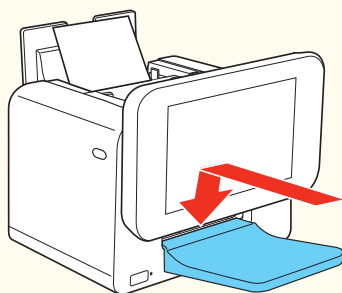


**3** Load up to 20 sheets at a time. Fan the sheets to slightly separate them.

**4** Place your paper into the slot between the edge guides with the glossy side up. Slide the edge guides inward slightly.

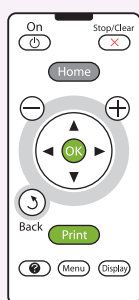
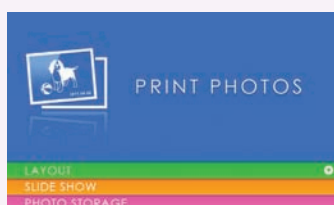


**5** Attach the output tray.

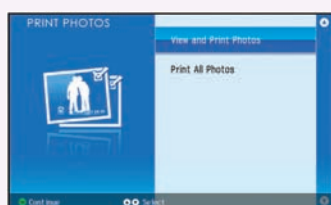


**Note:** Keep unused paper in the original package and store it flat to prevent curling.

## 7 View and Print



**1** Press the **OK** button on the remote control to select **PRINT PHOTOS**.



**2** Press **OK** again to select **View and Print Photos**. You see your pictures organized by date. Press the **Display** button twice to view your photos one at a time.



**3** Use the arrows on the remote control to move through your photos.

**4** To select a photo for printing, press the **+** button. Press the button again for multiple copies.


**Note:** If you want to crop or edit a photo, press **OK**.

- 5 Repeat steps 3 and 4 for all the photos you want to print.
- 6 Press the **Print** button, then use the arrows to review your selected photos. Press **Print** again to print.

**Note:** You can also select photos and print from a slideshow.

## More on PictureMate

### See PictureMate Help

Press the  button on the remote control. Select **Troubleshooting** for solutions to common problems, or **Contents** for a list of topics.

### See your printed manual

See the *Basics* book for instructions on printing from PictureMate and other devices. Also learn how to save photos, replace your photo cartridge, take care of PictureMate, and solve problems.

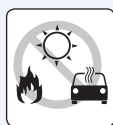


### See your online manual

After you install your PictureMate software from the CD, you'll see an icon for your **PictureMate Show User's Guide** on your computer screen. Double-click that icon for comprehensive instructions on using PictureMate and its software (requires an internet connection).



**Note:** For information on possible software updates for PictureMate, go to [epson.com/support](http://epson.com/support), select **Printers**, and select your product under **Single-function Ink Jet**. Then check for updated software in the **Drivers & Downloads** section.



**Caution:** To avoid damaging your PictureMate, keep it out of the sun and don't leave it in your car or other location where it can get too hot or too cold.

EPSON and PictureMate are registered trademarks, PictureMate Show is a trademark, and EPSON Exceed Your Vision is a registered logomark of Seiko Epson Corporation.

General Notice: Other product names used herein are for identification purposes only and may be trademarks of their respective owners. Epson disclaims any and all rights in those marks.

This information is subject to change without notice.

© 2013 Epson America, Inc. 4/13

CPD-27478R1  
Printed in XXXXXX