

**EAGLE** | **arion**

# User Manual

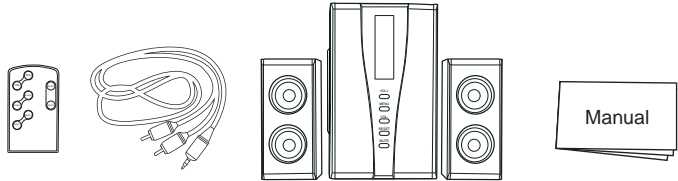
Model:ET-AR508LR-BK

2.1 Soundstage Speakers with Subwoofer



# 1. Package Contents

1. ET-AR508LR-BK speaker system
2. Wireless remote with battery
3. User manual
4. 3.5mm to RCA audio cable



# 2. Safety Instructions

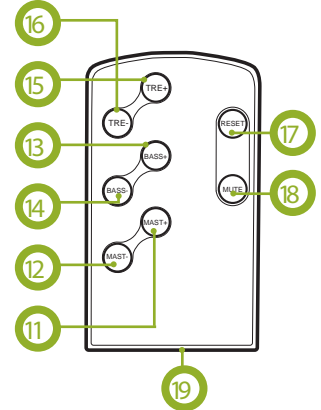
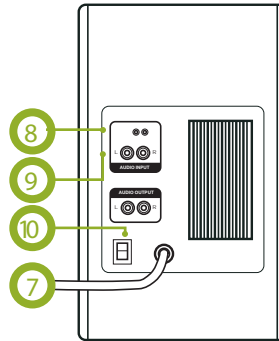
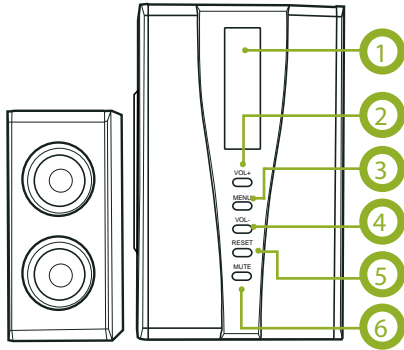


Caution: Electric Shock Hazard

When using this electronic appliance, basic precautions should always be followed to reduce the risk of fire, electrical shock and injury to persons, including the following:

1. Do not use this product near water i.e. bath tub or swimming pool.
2. Unplug from AC outlet when not in use and before cleaning.
3. Close supervision is necessary when used near children.
4. Clean only with dry cloth.
5. Do not attempt to repair the product on your own. It contains no user serviceable parts.
6. Do not dispose of batteries in fire. They may explode. Check local codes for battery disposal instructions.

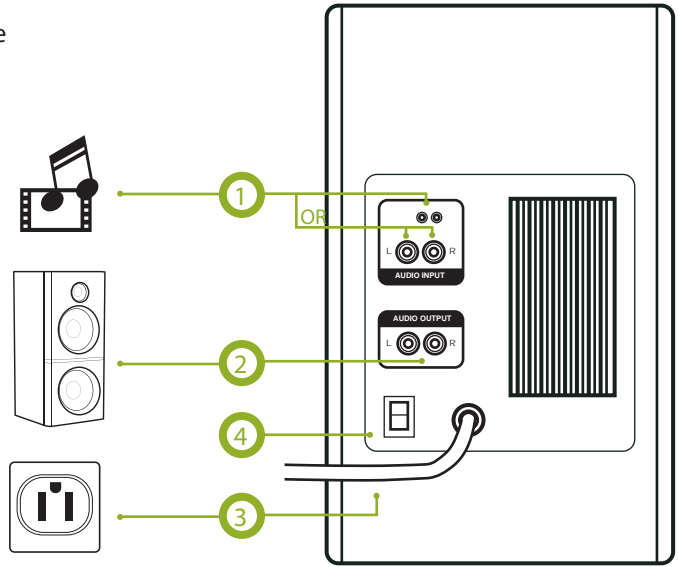
# 3. Product Overview



- |   |  |   |
|---|--|---|
| <ol style="list-style-type: none"> <li>1. <b>Status LED</b><br/>Displays Volume, Treble, Bass, EQ</li> <li>2. <b>Vol+</b><br/>Increases volume or adjusts selected menu function</li> <li>3. <b>Menu</b><br/>Switches functions: Volume, Treble or Bass</li> <li>4. <b>Vol-</b><br/>Decrease volume or adjusts selected menu function</li> <li>5. <b>Reset</b><br/>Resets Bass and Treble settings to factory default</li> <li>6. <b>Mute</b><br/>Turns on/off master volume</li> </ol> | <ol style="list-style-type: none"> <li>7. <b>Power cord</b><br/>Connects to 110V AC outlet</li> <li>8. <b>Audio input 1</b><br/>Auxiliary 3.5mm plug</li> <li>9. <b>Audio input 2</b><br/>Standard RCA plug</li> <li>10. <b>Power switch</b><br/>Turns speakers on/off</li> <li>11. <b>Mast+</b><br/>Increases master volume</li> <li>12. <b>Mast-</b><br/>Decreases master volume</li> <li>13. <b>Bass+</b><br/>Increases bass level</li> </ol> | <ol style="list-style-type: none"> <li>14. <b>Bass-</b><br/>Decreases bass level</li> <li>15. <b>Tre+</b><br/>Increases treble level</li> <li>16. <b>Tre-</b><br/>Decreases treble level</li> <li>17. <b>Reset</b><br/>Resets Bass and Treble settings to factory default</li> <li>18. <b>Mute</b><br/>Turns on/off master volume</li> <li>19. <b>Battery compartment</b><br/>Insert battery with letter facing up</li> </ol> |
|---|--|---|

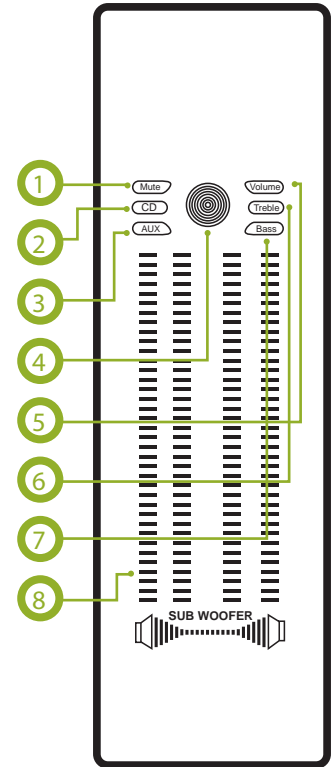
# 4. Product Setup

1. Connect the 3.5mm end of audio cable to your music device.
2. Connect the RCA end of audio cable to back of system. Only one audio input may be used at a time.
3. Connect the power cord to an 110V AC outlet.
4. Turn on the power and slowly increase the volume until reaching a comfortable level.
5. Adjust treble or bass as needed.



# 5. Understanding LCD Display

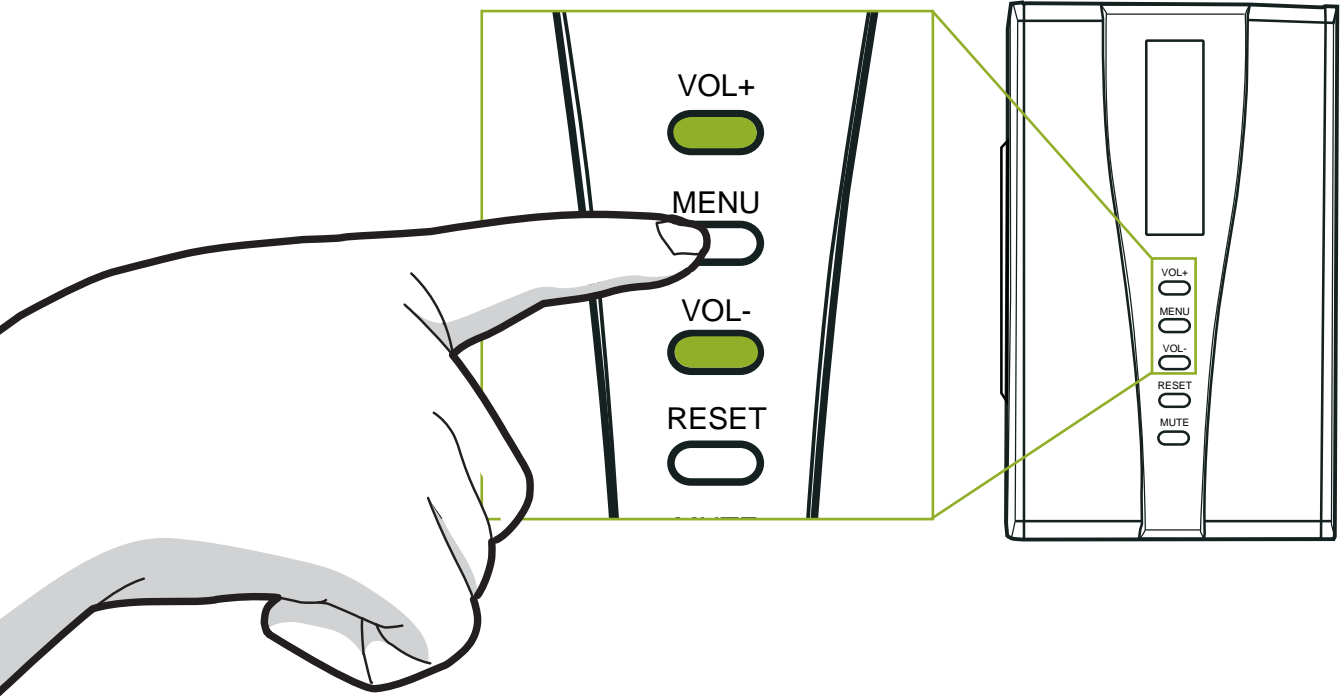
- 1. Mute Indicator**  
Indicates if the system mute has been turned on or off
- 2. CD Input Indicator**  
(models with CD input)  
Indicates if the system is currently using the CD input
- 3. Auxiliary Input Indicator**  
(models with Aux input)  
Indicates if the system is currently using the Aux input
- 4. Power On Indicator**  
Indicates if the system is turned on or off
- 5. Volume Indicator**  
Indicates if the system is being set to Volume Adjustment Mode
- 6. Treble Adjustment Indicator**  
Indicates if the system is being set to Treble Adjustment Mode
- 7. Bass Adjustment Indicator**  
Indicates if the system is being set to Bass Adjustment Mode
- 8. Subwoofer Indicator**  
Indicates if subwoofer is in use



# 6. Using Front Panel Controls

(Volume • Bass • Treble • Equalizer)

1. The LCD area displays your current selection.
2. Press the Menu button until you have selected your desired function. Press the Vol+ or Vol- to change the setting



# 7. Using the wireless Remote

## Adjusting Volume/Mute using Remote Control

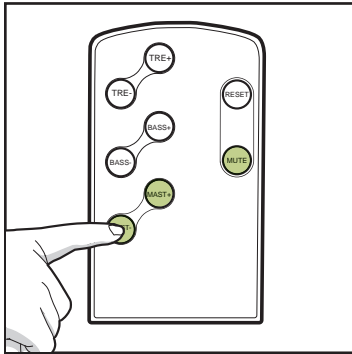
1. Press Mast+ button to increase volume level and Mast- button to decrease volume level.
2. Press Mute to turn on/off master volume. Press again to resume previous volume level.

## Adjusting Treble/Bass using Remote Control

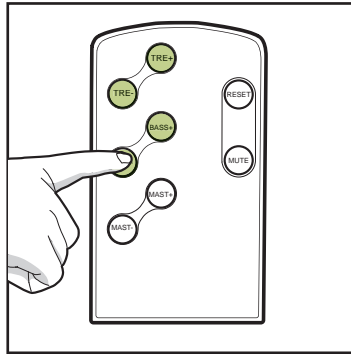
1. Press Tre+ button to increase bass level and Tre- button to decrease bass level.
2. Press Bass+ button to increase volume level and Bass- button to decrease volume level.

## Resetting EQ Levels using Remote Control

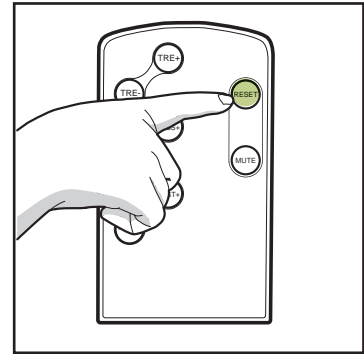
1. Press Reset button to reset all EQ levels to factory default.



Adjusting Volume/Mute using Remote Control



Adjusting Treble/Bass using Remote Control



Resetting EQ Levels using Remote Control

# 8. Optimum Settings

1. For best reception, always point the remote control at the LCD display area. The remote control's effective range is approximately 10ft.
2. For best tonal fidelity, we recommend setting your audio source to line level output and use the speaker to control overall volume level.
3. For best tonal fidelity, we recommend using the default EQ levels so you hear the music at exactly the same way it was recorded. The easiest way to do this is by pressing the Reset button located on the remote control.
4. This speaker system is most efficient when the volume level is set between 30% to 80%. You get highest sound quality and minimum distortion within these volume levels.
5. Place the satellite speakers at least 16 inches from each other. This enhances stereo sound effect and perceived sound field.
6. Provide ample space around the subwoofer unit. It needs enough room to move massive amount of air! To further enhance lower frequencies, place the subwoofer unit near walls.



# 9. Specification

- Total RMS Power:
  - Satellites: 70 Watts
  - Subwoofer: 15 Watts RMS x 2 (into 4 ohms, @<=1% THD)
- Total Peak Power: 40 Watts RMS x 1 (into 4 ohms, @<=1% THD)
- Frequency Response: 140 Watts
- Drivers: 35Hz to 20kHz
  - Satellites: Dual 3-inch tweeter with solid wood enclosure
  - Subwoofer: 6.5-inch driver with solid wood enclosure
- Speaker Dimension:
  - Satellites: 4.53 x 9.85 x 5.12 inches
  - Subwoofer: 8.67 x 14.18 x 9.85 inches

# 10. Regulatory Compliance

## FCC Class B Information

This equipment has been tested and found to comply with the limits for a Class B digital device, pursuant to Part 15 of FCC Rules. These limits are designed to provide reasonable protection against harmful interference in a residential installation. However, there is no guarantee that interference will not occur in a particular installation.

## CE Compliance for Europe

This equipment has been tested and found to comply with the limits for European Council Directive on the approximation of the law of the member states relating to electromagnetic compatibility (89/336/EEC) according to EN55022 Class B.

# 11. Limited Warranty

Eagle Tech warrants that the product, in the course of its normal use, will be free from defects in material and workmanship for a period of one (1) year. This limited warranty period shall commence on the purchase date appearing on your purchase receipt. Eagle Tech shall have no liability for any product returned if Eagle Tech determines that the product was not purchased from authorized retailers, that the asserted defect a) is not present, b) cannot reasonably be rectified because of damage occurring before Eagle Tech receives the Product, or c) is attributable to misuse, improper installation, alteration (including removing or obliterating labels and opening or removing parts). The foregoing warranty shall extend to repaired or replaced products for the remaining of the applicable period of the original warranty or ninety (90) days from the date of shipment of a repaired or replaced product, whichever is longer.

# 12. Contacting Us

Visit us online at [www.eagletechusa.com](http://www.eagletechusa.com) and submit your request to the appropriate departments:

Customer Service      <http://contact.eagletechusa.com/>

FAQ                      <http://faq.eagletechusa.com/>

RMA                      <http://rma.eagletechusa.com/>

Eagle Tech Computers, Inc.  
17531 Railroad St. Ste D  
City of Industry, CA 91748  
USA  
[www.eagletechusa.com](http://www.eagletechusa.com)  
Phone: 626.956.4040  
Fax: 626.810.4820

© 2008 Eagle Tech Computers, Inc. All rights reserved. Eagle Tech, the Eagle Tech logo and other Eagle Tech marks are owned by Eagle Tech and may be registered. All other trademarks are the property of their respective owners.



Eagle Tech Computers, Inc.

[www.eagletechusa.com](http://www.eagletechusa.com)

Phone: 626.956.4040

Fax: 626.810.4820