

# **D-Link™ DGE-530T**

**32-bit Gigabit Network Adapter**

Manual

---

Version B1 (August2005)

---

6DGE530T..04G  
Printed in China  
RECYCLABLE

Subject to the terms and conditions set forth herein, D-Link Systems, Inc. ("D-Link") provides this Limited Warranty:

- Only to the person or entity that originally purchased the product from D-Link or its authorized reseller or distributor, and
- Only for products purchased and delivered within the fifty states of the United States, the District of Columbia, U.S. Possessions or Protectorates, U.S. Military Installations, or addresses with an APO or FPO.

**Limited Warranty:** D-Link warrants that the hardware portion of the D-Link product described below ("Hardware") will be free from material defects in workmanship and materials under normal use from the date of original retail purchase of the product, for the period set forth below ("Warranty Period"), except as otherwise stated herein.

- Hardware (excluding power supplies and fans): Two (2) Years
- Power supplies and fans: One (1) Year
- Spare parts and spare kits: Ninety (90) days

The customer's sole and exclusive remedy and the entire liability of D-Link and its suppliers under this Limited Warranty will be, at D-Link's option, to repair or replace the defective Hardware during the Warranty Period at no charge to the original owner or to refund the actual purchase price paid. Any repair or replacement will be rendered by D-Link at an Authorized D-Link Service Office. The replacement hardware need not be new or have an identical make, model or part. D-Link may, at its option, replace the defective Hardware or any part thereof with any reconditioned product that D-Link reasonably determines is substantially equivalent (or superior) in all material respects to the defective Hardware. Repaired or replacement hardware will be warranted for the remainder of the original Warranty Period or ninety (90) days, whichever is longer, and is subject to the same limitations and exclusions. If a material defect is incapable of correction, or if D-Link determines that it is not practical to repair or replace the defective Hardware, the actual price paid by the original purchaser for the defective Hardware will be refunded by D-Link upon return to D-Link of the defective Hardware. All Hardware or part thereof that is replaced by D-Link, or for which the purchase price is refunded, shall become the property of D-Link upon replacement or refund.

**Limited Software Warranty:** D-Link warrants that the software portion of the product ("Software") will substantially conform to D-Link's then current functional specifications for the Software, as set forth in the applicable documentation, from the date of original retail purchase of the Software for a period of ninety (90) days ("Software Warranty Period"), provided that the Software is properly installed on approved hardware and operated as contemplated in its documentation. D-Link further warrants that, during the Software Warranty Period, the magnetic media on which D-Link delivers the Software will be free of physical defects. The customer's sole and exclusive remedy and the entire liability of D-Link and its suppliers under this Limited Warranty will be, at D-Link's option, to replace the non-conforming Software (or defective media) with software that substantially conforms to D-Link's functional specifications for the Software or to refund the portion of the actual purchase price paid that is attributable to the Software. Except as otherwise agreed by D-Link in writing, the replacement Software is provided only to the original licensee, and is subject to the terms and conditions of the license granted by D-Link for the Software. Replacement Software will be warranted for the remainder of the original Warranty Period and is subject to the same limitations and exclusions. If a material non-conformance is incapable of correction, or if D-Link determines in its sole discretion that it is not practical to replace the non-conforming Software, the price paid by the original licensee for the non-conforming Software will be refunded by D-Link; provided that the non-conforming Software (and all copies thereof) is first returned to D-Link. The license granted respecting any Software for which a refund is given automatically terminates.

**Non-Applicability of Warranty:** The Limited Warranty provided hereunder for Hardware and Software portions of D-Link's products will not be applied to and does not cover any refurbished product and any product purchased through the inventory clearance or liquidation sale or other sales in which D-Link, the sellers, or the liquidators expressly disclaim their warranty obligation pertaining to the product and in that case, the product is being sold "As-Is" without any warranty whatsoever including, without limitation, the Limited Warranty as described herein, notwithstanding anything stated herein to the contrary.

**Submitting A Claim:** The customer shall return the product to the original purchase point based on its return policy. In case the return policy period has expired and the product is within warranty, the customer shall submit a claim to D-Link as outlined below:

- The customer must submit with the product as part of the claim a written description of the Hardware defect or Software nonconformance in sufficient detail to allow D-Link to confirm the same, along with proof of purchase of the product (such as a copy of the dated purchase invoice for the product) if the product is not registered.
- The customer must obtain a Case ID Number from D-Link Technical Support at 1-877-453-5465, who will attempt to assist the customer in resolving any suspected defects with the product. If the product is considered defective, the customer must obtain a Return Material Authorization ("RMA") number by completing the RMA form and entering the assigned Case ID Number at <https://rma.dlink.com/>.

- After an RMA number is issued, the defective product must be packaged securely in the original or other suitable shipping package to ensure that it will not be damaged in transit, and the RMA number must be prominently marked on the outside of the package. Do not include any manuals or accessories in the shipping package. D-Link will only replace the defective portion of the product and will not ship back any accessories.
- The customer is responsible for all in-bound shipping charges to D-Link. No Cash on Delivery ("COD") is allowed. Products sent COD will either be rejected by D-Link or become the property of D-Link. Products shall be fully insured by the customer and shipped to **D-Link Systems, Inc., 17595 Mt. Herrmann, Fountain Valley, CA 92708**. D-Link will not be held responsible for any packages that are lost in transit to D-Link. The repaired or replaced packages will be shipped to the customer via UPS Ground or any common carrier selected by D-Link. Return shipping charges shall be prepaid by D-Link if you use an address in the United States, otherwise we will ship the product to you freight collect. Expedited shipping is available upon request and provided shipping charges are prepaid by the customer.

D-Link may reject or return any product that is not packaged and shipped in strict compliance with the foregoing requirements, or for which an RMA number is not visible from the outside of the package. The product owner agrees to pay D-Link's reasonable handling and return shipping charges for any product that is not packaged and shipped in accordance with the foregoing requirements, or that is determined by D-Link not to be defective or non-conforming.

**What Is Not Covered:** The Limited Warranty provided herein by D-Link does not cover: Products that, in D-Link's judgment, have been subjected to abuse, accident, alteration, modification, tampering, negligence, misuse, faulty installation, lack of reasonable care, repair or service in any way that is not contemplated in the documentation for the product, or if the model or serial number has been altered, tampered with, defaced or removed; Initial installation, installation and removal of the product for repair, and shipping costs; Operational adjustments covered in the operating manual for the product, and normal maintenance; Damage that occurs in shipment, due to act of God, failures due to power surge, and cosmetic damage; Any hardware, software, firmware or other products or services provided by anyone other than D-Link; and Products that have been purchased from inventory clearance or liquidation sales or other sales in which D-Link, the sellers, or the liquidators expressly disclaim their warranty obligation pertaining to the product. While necessary maintenance or repairs on your Product can be performed by any company, we recommend that you use only an Authorized D-Link Service Office. Improper or incorrectly performed maintenance or repair voids this Limited Warranty.

**Disclaimer of Other Warranties:** EXCEPT FOR THE LIMITED WARRANTY SPECIFIED HEREIN, THE PRODUCT IS PROVIDED "AS-IS" WITHOUT ANY WARRANTY OF ANY KIND WHATSOEVER INCLUDING, WITHOUT LIMITATION, ANY WARRANTY OF MERCHANTABILITY, FITNESS FOR A PARTICULAR PURPOSE AND NON-INFRINGEMENT. IF ANY IMPLIED WARRANTY CANNOT BE DISCLAIMED IN ANY TERRITORY WHERE A PRODUCT IS SOLD, THE DURATION OF SUCH IMPLIED WARRANTY SHALL BE LIMITED TO THE DURATION OF THE APPLICABLE WARRANTY PERIOD SET FORTH ABOVE. EXCEPT AS EXPRESSLY COVERED UNDER THE LIMITED WARRANTY PROVIDED HEREIN, THE ENTIRE RISK AS TO THE QUALITY, SELECTION AND PERFORMANCE OF THE PRODUCT IS WITH THE PURCHASER OF THE PRODUCT.

**Limitation of Liability:** TO THE MAXIMUM EXTENT PERMITTED BY LAW, D-LINK IS NOT LIABLE UNDER ANY CONTRACT, NEGLIGENCE, STRICT LIABILITY OR OTHER LEGAL OR EQUITABLE THEORY FOR ANY LOSS OF USE OF THE PRODUCT, INCONVENIENCE OR DAMAGES OF ANY CHARACTER, WHETHER DIRECT, SPECIAL, INCIDENTAL OR CONSEQUENTIAL (INCLUDING, BUT NOT LIMITED TO, DAMAGES FOR LOSS OF GOODWILL, LOSS OF REVENUE OR PROFIT, WORK STOPPAGE, COMPUTER FAILURE OR MALFUNCTION, FAILURE OF OTHER EQUIPMENT OR COMPUTER PROGRAMS TO WHICH D-LINK'S PRODUCT IS CONNECTED WITH, LOSS OF INFORMATION OR DATA CONTAINED IN, STORED ON, OR INTEGRATED WITH ANY PRODUCT RETURNED TO D-LINK FOR WARRANTY SERVICE) RESULTING FROM THE USE OF THE PRODUCT, RELATING TO WARRANTY SERVICE, OR ARISING OUT OF ANY BREACH OF THIS LIMITED WARRANTY, EVEN IF D-LINK HAS BEEN ADVISED OF THE POSSIBILITY OF SUCH DAMAGES. THE SOLE REMEDY FOR A BREACH OF THE FOREGOING LIMITED WARRANTY IS REPAIR, REPLACEMENT OR REFUND OF THE DEFECTIVE OR NON-CONFORMING PRODUCT. THE MAXIMUM LIABILITY OF D-LINK UNDER THIS WARRANTY IS LIMITED TO THE PURCHASE PRICE OF THE PRODUCT COVERED BY THE WARRANTY. THE FOREGOING EXPRESS WRITTEN WARRANTIES AND REMEDIES ARE EXCLUSIVE AND ARE IN LIEU OF ANY OTHER WARRANTIES OR REMEDIES, EXPRESS, IMPLIED OR STATUTORY.

**Governing Law:** This Limited Warranty shall be governed by the laws of the State of California. Some states do not allow exclusion or limitation of incidental or consequential damages, or limitations on how long an implied warranty lasts, so the foregoing limitations and exclusions may not apply. This Limited Warranty provides specific legal rights and you may also have other rights which vary from state to state.

**Trademarks:** D-Link is a registered trademark of D-Link Systems, Inc. Other trademarks or registered trademarks are the property of their respective owners.

**Copyright Statement:** *No part of this publication or documentation accompanying this product may be reproduced in any form or by any means or used to make any derivative such as translation, transformation, or adaptation without permission from D-Link Corporation/D-Link Systems, Inc., as stipulated by the United States Copyright Act of 1976 and any amendments thereto. Contents are subject to change without prior notice. Copyright 2004 by D-Link Corporation/D-Link Systems, Inc. All rights reserved.*

**CE Mark Warning:** This is a Class B product. In a domestic environment, this product may cause radio interference, in which case the user may be required to take adequate measures.

**FCC Statement:** This equipment has been tested and found to comply with the limits for a Class B digital device, pursuant to part 15 of the FCC Rules. These limits are designed to provide reasonable protection against harmful interference in a residential installation. This equipment generates, uses, and can radiate radio frequency energy and, if not installed and used in accordance with the instructions, may cause harmful interference to radio communication. However, there is no guarantee that interference will not occur in a particular installation. If this equipment does cause harmful interference to radio or television reception, which can be determined by turning the equipment off and on, the user is encouraged to try to correct the interference by one or more of the following measures:

- Reorient or relocate the receiving antenna.
- Increase the separation between the equipment and receiver.
- Connect the equipment into an outlet on a circuit different from that to which the receiver is connected.
- Consult the dealer or an experienced radio/TV technician for help.

**For detailed warranty information applicable to products purchased outside the United States, please contact the corresponding local D-Link office.**

---

# Product Registration

Register online your D-Link product at <http://support.dlink.com/register/>

**Product registration is entirely voluntary and failure to complete or return this form will not diminish your warranty rights.**

# Table of Contents

---

<b>INTRODUCTION.....</b>	<b>1</b>
System Requirements.....	1
Features .....	1
<b>INSTALLATION .....</b>	<b>3</b>
Unpack and Inspect.....	3
Installing the Adapter.....	3
Connecting the Network Cable .....	3
Software Installation .....	4
<b>ADVANCED FEATURES .....</b>	<b>5</b>
Wake On LAN .....	5
QoS .....	5
Jumbo Frames .....	5
The D-Link Ethernet Adapter Agent.....	6
SNMP .....	10
D-Link Network Control .....	11
The Cable Diagnostic Feature .....	11
<b>TROUBLESHOOTING.....</b>	<b>13</b>
<b>SPECIFICATIONS .....</b>	<b>14</b>

---

## Introduction

Thank you for choosing the D-Link DGE-530T, the value leader among Gigabit adapters for PCI Bus personal computers. This introduction gives a general description of the newer networking technologies found on the DGE-530T.

The DGE-530T provides the bandwidth capability to support high-end servers and workstations. With Auto-negotiation, this card can run on three different speeds: 10Mbps at half and full duplex, 100Mbps at half and full duplex, and 1000Mbps at full duplex. When running at 1000Mbps, it provides a network throughput of 2Gbps in full-duplex mode.

The DGE-530T provides IEEE 802.3x Flow Control Enhancements, which are needed for a network adapter to function with a switch. In full-duplex mode, the MAC implements the PAUSE control function. This means when a switch is connected in full-duplex mode and it senses that its buffer will overflow in the near future, the switch will transmit one standard Ethernet packet that causes the DGE-530T to pause for a period, thus avoiding internal buffer overflow and packet loss.

The NIC enables simple, scalable network migration, providing the benefits of Gigabit Ethernet networking with the familiarity of Ethernet.

---

## System Requirements

Before installing the DGE-530T, check your system for the following minimum configuration requirements.

- One of the following slot types:
  - An open PCI bus master slot, 32-bit, operating at 33MHz.
- 32 MB of System Memory
- 150 MHz processor, or faster
- The latest BIOS for your computer
- One of the following types of twisted-pair network cabling:
  - 4 – pair Category 5 or better for 1000Mbps
  - Category 5 or better for 100Mbps
  - Category 3, 5 or better for 10Mbps

---

## Features

Designed for versatility and performance, the DGE-530T Network Adapter provides the following:

- Operability in 32-bit, 33 MHz slot servers and workstations
- Universal Bus support 3.3V
- Compliance with IEEE 802.3ab 1000BASE-T Gigabit Ethernet standards, IEEE 802.3u Fast Ethernet standards.
- Plug-and-Play installation
- Supports Wake-on-LAN

- Full-duplex Gigabit Ethernet interface that delivers 2Gbps aggregate bandwidth
- Supports half and full duplex at 10Mbps, half and full-duplex at 100Mbps, and full-duplex operation at 1000Mbps
- Supports for full-duplex double network throughput
- Supports TCP/IP checksum generation and verification
- Supports SNMP V1
- Supports 802.3x flow control
- Supports 802.1Q VLAN
- Supports 802.1p Priority Tags
- Supports Cable Diagnostic Feature
- Supports ACPI 2.0
- One built-in RJ-45 connector
- Auto-negotiation to the highest available speed
- Four LED indicators: Link/Activity, Full Duplex, 1000Mbps, 100Mbps.
- Low profile bracket included
- Supports Jumbo Frame up to 9K in size Driver† support for:

Microsoft Windows 98SE/98	Client 32
Microsoft Windows Me	DOS.ODI
Microsoft Windows NT4.0	Netware 5.x, 6.x
Microsoft Windows 2000	MAC OS 10.2, 10.3
Microsoft Windows 2003	Marvell VCT package
Microsoft Windows XP	NDIS2
Microsoft Windows 64bit	FreeBSD 5.3
Linux for Kernel 2.4.x , 2.6.x	



**NOTE:** The driver for Microsoft Windows Server 2003 does not support Network Control.

---

† Check <http://www.dlink.com> for newest release of drivers.



# 2

## Installation

---

### Unpack and Inspect

---

**CAUTION:** *Under ordinary circumstances, a DGE-530T card will not be affected by a static charge that may be received through your body during handling of the unit. In special circumstances, the user may carry an extraordinarily high static charge and it is good practice to reduce the charge by touching a ground before handling the adapter card.*

Open the shipping carton and carefully remove all items. Ensure that the following items are included:

- One DGE-530T Gigabit Ethernet Adapter Card
- DGE-530T Drivers and Manual on CD-ROM
- One Quick Installation Guide

If any of these items are missing or damaged, please contact your local reseller for replacement.

---

### Installing the Adapter

---

1. Shut down the computer, unplug its power cord, and remove the chassis cover.

**(Important:** Opening the case of your computer may compromise the warranty of your computer. Consult the computer manufacturer before opening the case to ensure that you adhere to warranty guidelines. In some cases, you may need to have the DGE-530T installed by your computer manufacturer.)

2. Insert the contact edge of the DGE-530T card into the connector of any available PCI Bus Master expansion slot. Press the card firmly into the connector such that the card's contacts are fully seated in the connector.
3. Install the bracket screw that secures the card to the computer chassis.
4. Replace the computer's chassis cover.
5. Reconnect the computer's power cord, and switch computer power on. If the BIOS section of your computer's boot program is Plug-and-Play compliant, then at power-up the BIOS will automatically configure any newly installed DGE-530T adapter.

**NOTE:** *Due to a fault in some Plug-and-Play BIOS programs, occasionally a newly installed adapter is assigned an Interrupt Number which has already been assigned to another device. In such a case, the conflict of the Interrupt Number will cause faults in the behavior of both devices. Therefore, the user must run the CMOS Setup utility, and manually assign a non-conflicting Interrupt Number.*

---

### Connecting the Network Cable

---

1000BASE-T Gigabit Ethernet enables operation over the extensive installed base of legacy Category 5 cabling systems and, by default, the Category 5 cabling systems currently being installed.

It provides optimal full-duplex 1000Mb/s Ethernet service over Category 5e links as defined by ANSI/TIA/EIA-568-A-5. Topology rules for 1000BASE-T are the same as those used for 100BASE-T. Category 5 and 5e link lengths are limited to 100 meters.

## Software Installation



The CD-ROM included with your DGE-530T is designed to make installation of necessary software a painless and trouble-free process. Simply click on the “Install Driver” button, and an Installation Wizard will guide you through the process, no matter which operating system you’re running. The included Adobe Acrobat Reader, which is needed to read or print out your user manual, will also come in handy for many other applications.

Simply follow the directions in the Wizard, and your DGE-530T will be installed successfully in just a few minutes, allowing you to enjoy the many advantages of joining an Ethernet LAN.

# 3

## Advanced Features

---

### Wake On LAN

---

This Wake-on-LAN function can wake up the system from the sleeping mode to the fully powered mode over the network immediately and automatically. Once the system is awake, it can be directed to run management utilities. This function increases end-user productivity by avoiding disruptions during working hours.

---

### QoS

---

The **QoS** function allows the DGE-530T to transmit and receive tagged frames, such as 802.1p priority tagged frames and 802.1Q VLAN tagged frames. In order for QoS to function on the DGE-530T, it must be connected to a switch that supports and is configured for QoS. These priority tagged frames will let real-time programs optimally utilize the network bandwidth. High priority packets will be processed before low priority packets.



**NOTE:** To implement QoS on the DGE-530T, it must be connected to a switch or other device that supports and is configured for 802.1p QoS.

---

### Jumbo Frames

---

Jumbo Frames are Ethernet frames that are larger than 1518 bytes. Jumbo frames may be used to reduce server CPU utilization and improve wire efficiency.

By implementing extra data in fewer packets, jumbo frames can increase throughput and decrease CPU utilization. However, additional latency may be introduced.

End-to-end network hardware must support this capability or these packets will be dropped.

Consult your network administrator or switch manual for more information concerning configuring and understanding Jumbo Frames.

- Supported protocols are limited to IP (TCP, UDP).
- Jumbo frames require compatible switch connections that forward jumbo frames. Contact your switch vendor or manual for additional information.
- There is no benefit to configure jumbo frames if standard size Ethernet frames (64 to 1518 bytes) are used.
- Jumbo frames may be simultaneously used with VLANs.



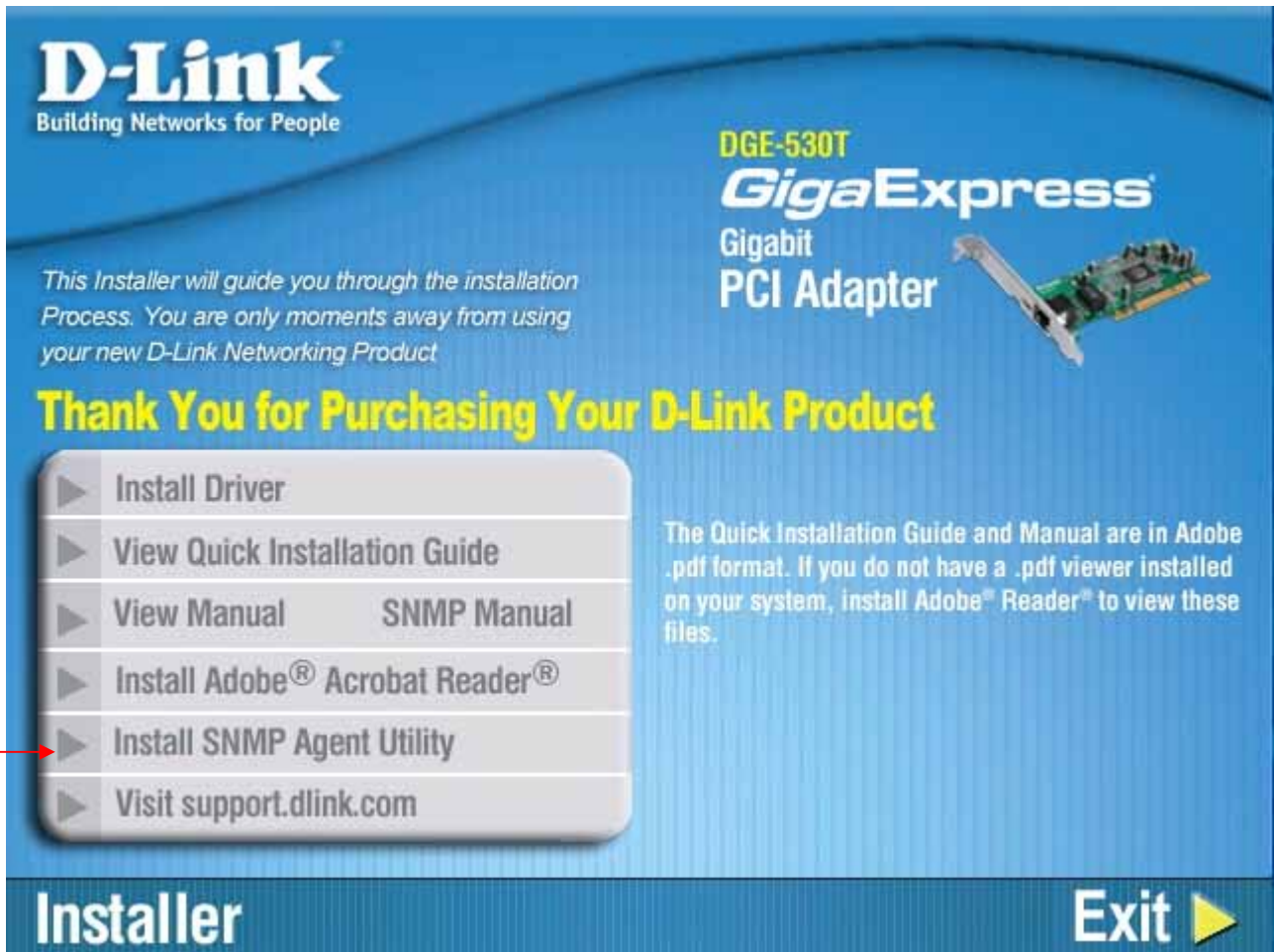
**NOTE:** Jumbo frames settings on a switch must be set to 8 bytes or larger than the adapter settings for Windows operating systems, and at least 22 bytes larger for all other operating systems.

---

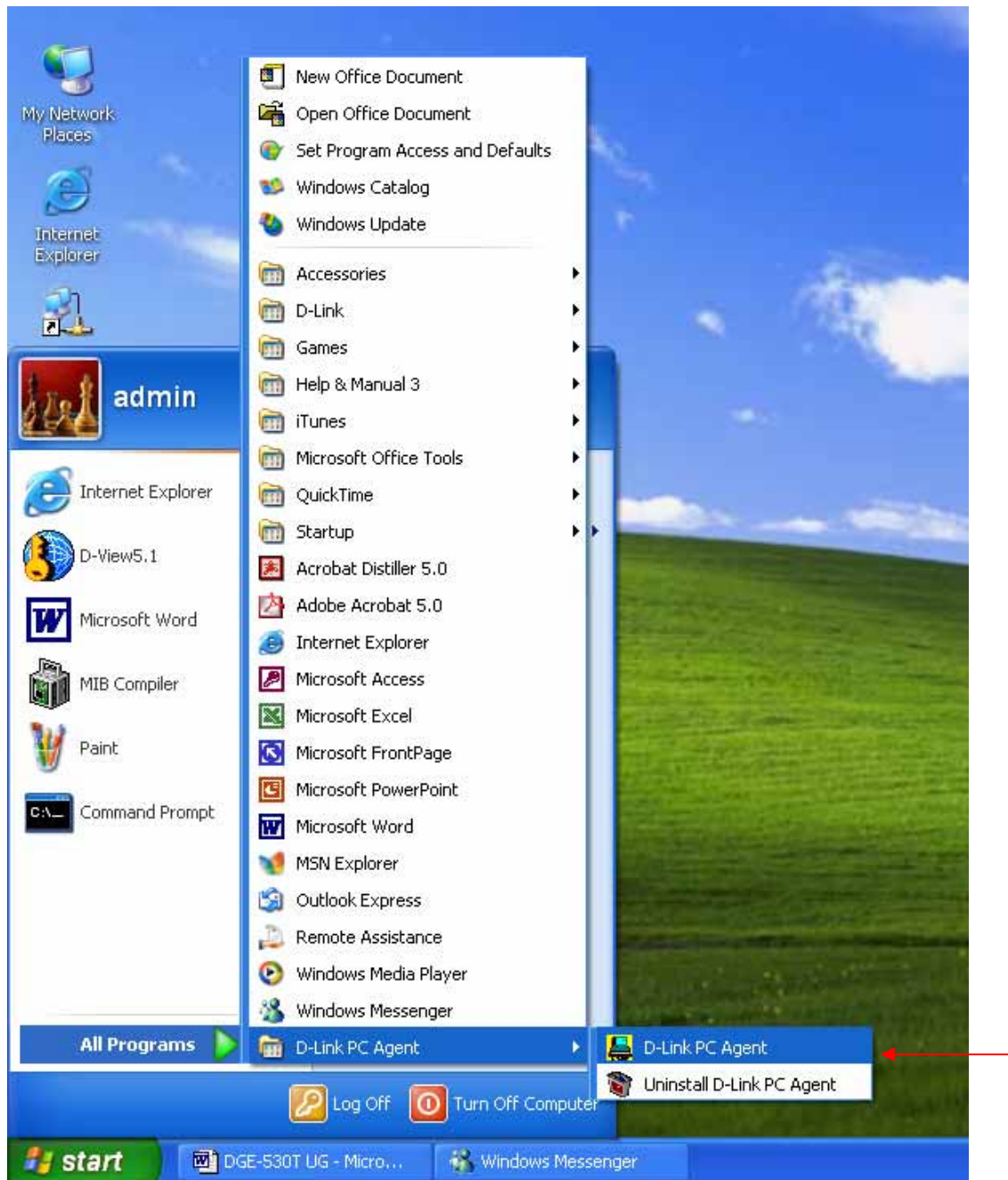
## The D-Link SNMP Agent Utility

---

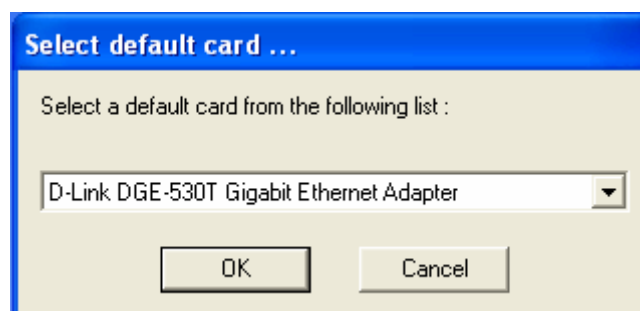
Included on the installation CD is a program for viewing and configuring the DGE-530T, known as the **D-Link SNMP Agent Utility**. This agent will allow the user to view error packets, set passwords and choose NIC card options on your computer. This tool is only for computers running Windows 2000 and Windows XP operating systems. Make sure that you have already clicked **Install Driver** on the introduction page and completed Installation Wizard. Then, click **Install SNMP Agent Utility** (also on the introduction page), and follow the steps of the Installation Wizard.



After successfully installing the **D-Link Ethernet Adapter Agent** and restarting your computer, the function is enabled by clicking **Start >Programs > D-Link PC Agent> D-Link PC Agent**.



Window will then prompt the user to choose an Ethernet card from a pull down list.

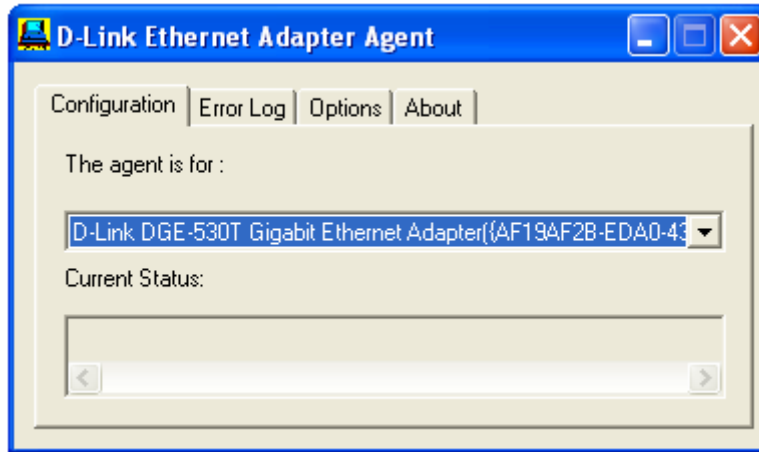


After choosing the **D-Link DGE-530T Gigabit Ethernet Adapter** and clicking **OK**, the user will be prompted with another window to input some personal information. You may input this information now or to set this information later, simply click OK. A brief explanation of this window may also be configured under the Option tab, which will be discussed later in this

chapter. After clicking OK, the D-Link Ethernet Adapter icon, shown below, should appear in the bottom right hand tool bar of your computer screen.

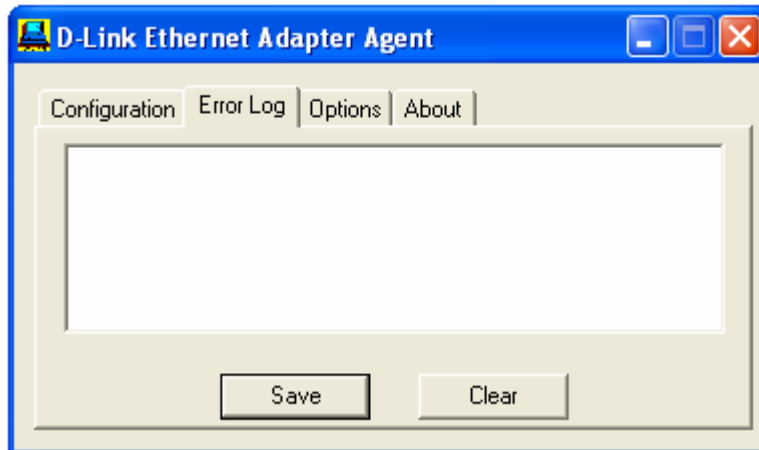


Double clicking the icon will open the Agent window, as shown below.



The Configuration Tab has two fields. The first field, “**The agent is for:**”, allows the user to choose an Ethernet card to configure, from a pull down menu. The “**Current Status**” is a read only field which displays the most recent action made by the Ethernet card.

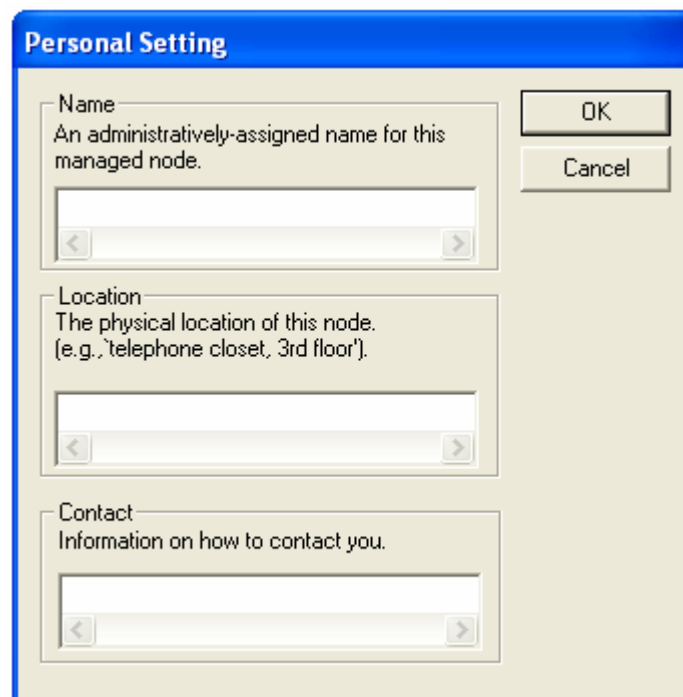
Clicking the **Error Log** tab will open the following screen. The Error log will display packets received by the DGE-530T, which were discarded due to an error. The user may choose to save these messages or clear them, using the appropriate buttons.



Clicking the Options tab will display the following screen. Here the user may check the “**Auto launch when Windows starts up.**” box to ensure the **D-Link Ethernet Adapter Agent** will automatically start when the Windows operating system commences.



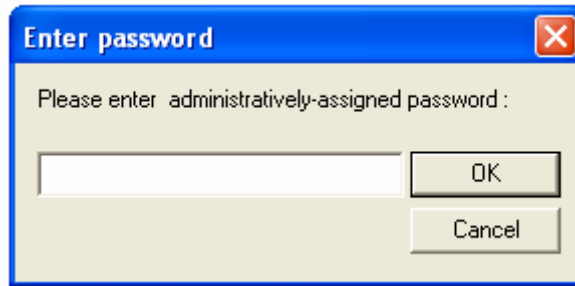
To adjust your personal settings, click the **Personal** button, which will open the following screen.



The user may set the following fields.

- **Name:** A name chosen to identify the user when configuring the DGE-530T.
- **Location:** The user may identify the physical location of the computer where the Ethernet card is installed.
- **Contact:** Information on how to contact the user, such as a telephone number or an e-mail address.

The user may also set a password to protect the configuration settings previously set. Click the Password button under the options tab to open the following screen.



Enter a password into the space provided and click **OK** to set your new password. If no password is set by the user, the default password of “private” is used and may need to be entered to configure the **D-Link SNMP Agent**.



**NOTE:** The default password for this utility is “private”.

Clicking the **About** tab will show the current version of the adapter and the copyright information.



---

## SNMP

---

SNMP is an acronym for Simple Network Management Protocol. This network protocol is used to manage TCP/IP networks by using “Traps” sent from devices compliant with SNMP and collected by one or more servers. Devices that comply with SNMP correspond with management applications by sending alerts and updates, as well as allowing configuration changes.

The DGE-530T’s SNMP agent will take event notices from the adapter, translate and then forward them to specified SNMP management stations.

Before installing the SNMP agent, you must install SNMP on your computer. Consult the operating system documentation of your computer for additional information.

To install SNMP on the DGE-530T, simply click Install SNMP Agent on the Introduction Page and complete the steps of the Installation Wizard.




This utility should only be used by experienced network administrators. Additional software or services may need to be previously installed or configured prior to installation of the SNMP protocol.

---

## D-Link Network Control

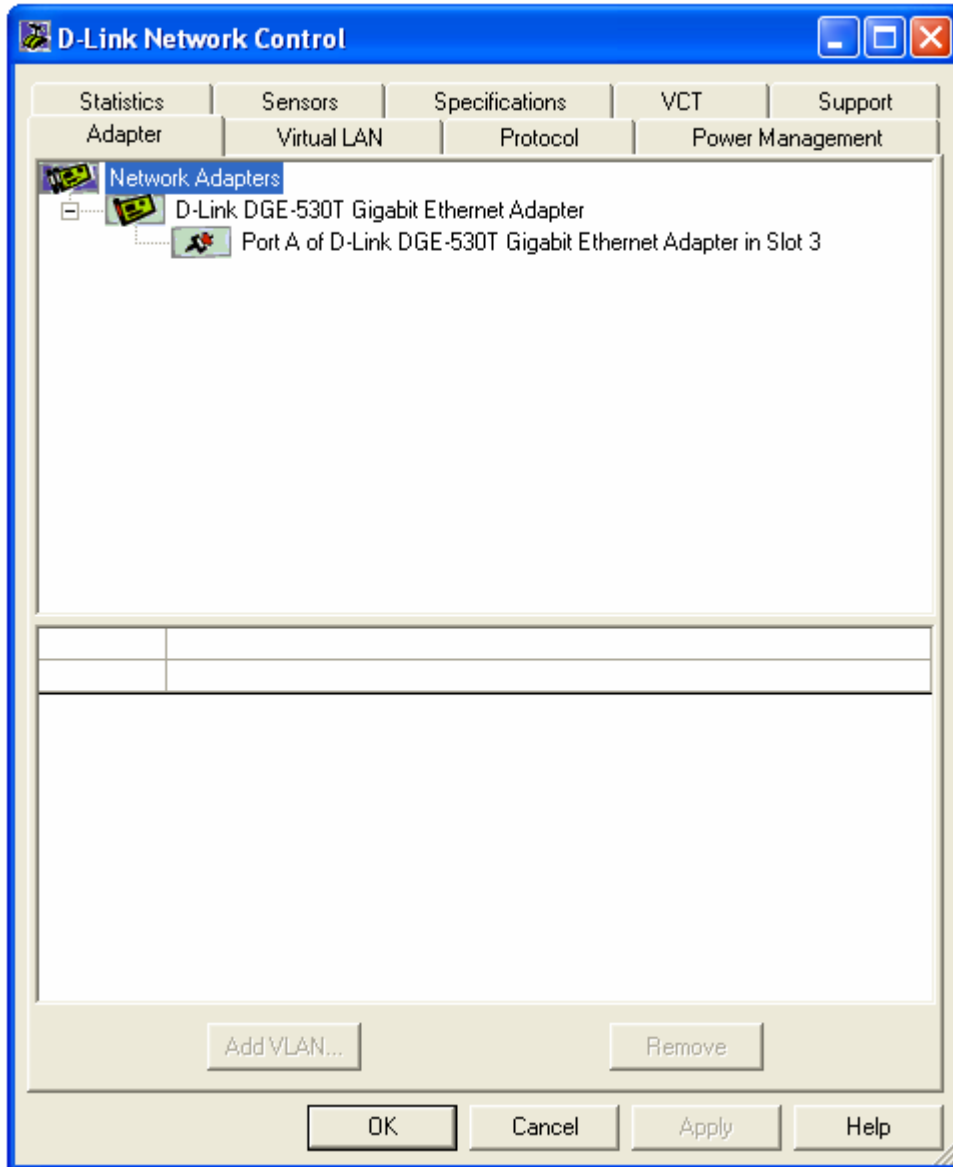
---

Installed automatically with the driver is the D-Link Network Control program, which may be opened from an icon appearing in the lower right hand taskbar of your browser, and on the Control Panel of your computer. Double click the icon  to open the program. The configuration and settings information for this program may be found by clicking the **Help** button of the current screen. This should provide you with any information you should need.

### *The Cable Diagnostic Feature*

Within the D-Link Network Control program is a feature for examining the quality and the characteristics of a network cable that has been connected to the DGE-530T. This feature, named the **Virtual Cable Tester (VCT)**, will make it possible for the user to detect and report potential cabling issues such as cable opens, cable shorts and impedance mismatches. The distance of the fault can be reported to within one meter.

To view the VCT window, simply double click the icon for the **D-Link Network Control** and select the VCT folder heading at the top of the window as seen below.



To test the diagnostic, first disconnect the cable from the remote end node so there is just an open cable connected to the DGE-530T. Click the appropriate adapter from the tree view above and then click the **Start VCT** button. The results which will appear in the table below will display the cable pairs, the status of the corresponding cable, the distance to the fault, and the status of the test. If the selected adapter is connected and has an uplink, the **Digital Signal Processor (DSP)** will be activated and will report the speed of the connection (10, 100, 1000Mbps) and the length of the cable.

**4**

---

## ***Troubleshooting***

If you experience any problems with the adapter, check to see:

- that the appropriate driver is loaded;
- that the proper grade of cable is employed for the network connection;
- that the supporting hub is properly qualified for the application.

The DGE-530T Adapter features four LED indicators:

- **Link/Activity** – Steady green indicates good linkage between the DGE-530T and its supporting server or switch. Flashing green indicates activity (transmitting or receiving) within the adapter.
- **Full**– Steady green indicates the adapter is operating in full-duplex mode.
- **1000M** – The LED indicator lights green when a 1000 Mbps device is connected to the adapter.
- **100M** –The LED indicator lights green when a 100 Mbps device is connected to the adapter.

---

## **Specifications**

### EMC And Safety Certifications:

- FCC Class B
- CE Class B
- BSMI Class B
- C-Tick

Host interface: 32-bit PCI Bus (Bus Master)

I/O base address assigned by Plug and Play system

Interrupt Number Assigned by Plug and Play system

Physical Dimensions: 4.88 inches(L) x 2.17 inches (W) [124mm(L) x 51mm(W)]

### Environment:

- Storage:  $-25^{\circ}$  to  $55^{\circ}$ C ( $-13^{\circ}$  to  $131^{\circ}$  F)
- Operating:  $0^{\circ}$  to  $40^{\circ}$  C ( $32^{\circ}$  to  $104^{\circ}$  F)
- Humidity: 5% to 90% non-condensing
- Power Consumption: 3.5W

# International Offices

## U.S.A

17595 Mt. Herrmann Street  
Fountain Valley, CA. 92708  
TEL: 714-885-6000  
Fax 866-743-4905  
URL: www.dlink.com

## Canada

2180 Winston Park Drive  
Oakville, Ontario, L6H 5W1  
Canada  
TEL: 1-905-8295033  
FAX: 1-905-8295223  
URL: www.dlink.ca

## Europe (U. K.)

4th Floor, Merit House  
Edgware Road, Colindale  
London NW9 5AB  
U.K.  
TEL: 44-20-8731-5555  
FAX: 44-20-8731-5511  
URL: www.dlink.co.uk

## Germany

Schwalbacher Strasse 74  
D-65760 Eschborn  
Germany  
TEL: 49-6196-77990  
FAX: 49-6196-7799300  
URL: www.dlink.de

## France

Le Florilege #.2, Allee de la Fresnerie  
78330 Fontenay le Fleury  
France  
TEL: 33-1-30238688  
FAX: 33-1-30238689  
URL: www.dlink-france.fr

## Netherlands

Weena 290  
3012 NJ Rotterdam  
Netherlands  
Tel: +31-10-282-1445  
Fax: +31-10-282-1331  
URL: www.dlink-benelux.com

## Belgium

Rue des Colonies 11  
B-1000 Brussels  
Belgium  
Tel: +32(0)2 517 7111  
Fax: +32(0)2 517 6500  
URL: www.dlink-benelux.com

## Italy

Via Nino Bonnet n. 6/b  
20154 - Milano,  
Italy  
TEL: 39-02-2900-0676  
FAX: 39-02-2900-1723  
URL: www.dlink.it

## Sweden

P.O. Box 15036, S-167 15 Bromma  
Sweden  
TEL: 46-(0)8564-61900  
FAX: 46-(0)8564-61901  
URL: www.dlink.se

## Denmark

Naverland 2, DK-2600  
Glostrup, Copenhagen,  
TEL: 45-43-969040  
FAX: 45-43-424347  
URL: www.dlink.dk

## Norway

Karihaugveien 89  
1086 Oslo  
Norway  
TEL: 47-23-897189  
FAX: 47-22-309085  
URL: www.dlink.no

## Finland

Latokartanontie 7A  
FIN-00700 HELSINKI  
Finland  
TEL : +358-10 309 8840  
FAX: +358-10 309 8841  
URL: www.dlink.fi

## Iberia

C/Sabino De Arana,  
56 Bajos  
08028 Barcelona  
TEL: 34 93 4090770  
FAX: 34 93 4910795  
URL: www.dlinkiberia.es

## Singapore

1 International Business Park  
#03-12 The Synergy  
Singapore 609917  
TEL: 65-6774-6233  
FAX: 65-6774-6322  
URL: www.dlink-intl.com

## Australia

1 Giffnock Avenue,  
North Ryde, NSW 2113  
Australia  
TEL: 61-2-8899-1800  
FAX: 61-2-8899-1868  
URL: www.dlink.com.au

## India

D-Link House, Kurla Bandra Complex  
Road,  
Off CST Road, Santacruz (East), Mumbai -  
400098.  
India  
TEL: 91-022-26526696/56902210  
FAX: 91-022-26528914  
URL: www.dlink.co.in

## Middle East (Dubai)

P.O.Box: 500376  
Office No.:103, Building:3  
Dubai Internet City  
Dubai, United Arab Emirates  
Tel:+971-4-3916480  
Fax:+971-4-3908881  
URL: www.dlink-me.com

## Turkey

Regus Offices  
Beybi Giz Plaza, Ayazaga Mah. Meydan  
Sok. No:28  
Maslak 34396, Istanbul-Turkiye  
TEL: +90 212 335 2553  
FAX: +90 212 335 2500  
URL: www.dlink.com.tr

## Egypt

19 El-Shahed Helmy, El Masri  
Al-Maza, Heliopolis  
Cairo, Egypt.  
TEL: +202 414 4295  
FAX: +202 415 6704  
URL: www.dlink-me.com

## Israel

11 Hamanofim Street  
Ackerstein Towers, Regus Business  
Center  
P.O.B 2148, Hertzelia-Pituach 46120.  
Israel  
TEL: +972-9-9715700  
FAX: +972-9-9715601  
URL: www.dlink.co.il

## LatinAmerica

Isidora Goyechea 2934 of 702,  
Las Condes  
Santiago - Chile S.A.  
TEL: 56-2-232-3185  
FAX: 56-2-232-0923  
URL: www.dlink.cl

## Brasil

Av das Nacoes Unidas,  
11857 - 14 - andar - cj 141/142  
Brooklin Novo  
Sao Paulo - SP - Brazil  
CEP 04578-000  
TEL: +55 11 55039320  
FAX: +55 11 55039322  
URL: www.dlinkbrasil.com.br

## South Africa

Einstein Park II  
Block B  
102-106 Witch-Hazel Avenue  
Highveld Technopark  
Centurion  
Gauteng  
Republic of South Africa  
TEL: 27-12-665-2165  
FAX: 27-12-665-2186  
URL: www.d-link.co.za

## Russia

Grafsky per., 14, floor 6  
Moscow  
129626 Russia  
TEL: 7-095-744-0099  
FAX: 7-095-744-0099 #350  
URL: www.dlink.ru

## China

No.202,C1 Building, Huitong Office  
Park,  
No.71, Jianguo Road, Chaoyang  
District, Beijing,  
100025, China.  
TEL +86-10-58635800  
FAX: +86-10-58635799  
URL: www.dlink.com.cn

## Taiwan

2F, No. 119, Pao-Chung Rd.  
Hsin-Tien, Taipei  
Taiwan  
TEL: 886-2-2910-2626  
FAX: 886-2-2910-1515  
URL: www.dlinktw.com.tw

## Headquarters

2F, No. 233-2, Pao-Chiao Rd.  
Hsin-Tien, Taipei  
Taiwan  
TEL: 886-2-2916-1600  
FAX: 886-2-2914-6299  
URL: www.dlink.c

