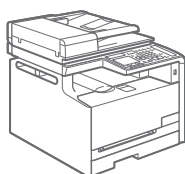


## imageCLASS

MF8280Cw / MF8210Cn

### Getting Started

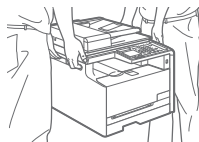
1



Preface

➡ P. 2

2



Installing the Machine

➡ P. 4

3



Connecting to a Computer  
and Installing the Drivers

➡ P. 14

4



Configuring and  
Connecting the Fax

➡ P. 20

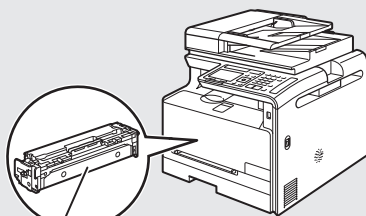
#### Read this guide first.

Please read this guide before operating this product. After you finish reading this guide, store it in a safe place for future reference.

# Checking the Supplied Accessories

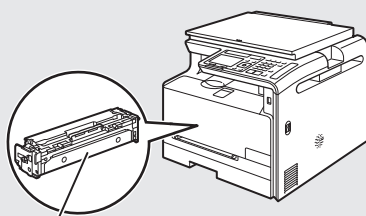
Confirm that all the supplied accessories are contained in the box. If an item is missing or damaged, please contact the Canon Authorized Service Facilities or the Canon Customer Care Center.

Machine Unit  
(MF8280Cw)



The toner cartridge is already installed.

Machine Unit  
(MF8210Cn)



The toner cartridge is already installed.

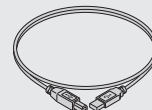
Power Cord



Telephone Cable  
(MF8280Cw only)



USB Cable



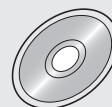
Getting Started



Wireless LAN Setting Guide  
(MF8280Cw only)



User Software CD-ROM



Shortcut key label



Handset Cable Clamps  
(MF8280Cw only)



## User Software CD-ROM

The User Software CD-ROM contains the MF Drivers, MF Toolbox, various software, and e-Manual.

Depending on the operating system you are using, some functions of the driver software included in the CD-ROM may not be usable. The newest software is posted on the Canon web site. Please verify the operating environment etc. and download the appropriate software if required.

### MF Drivers

The MF Driver contains the Network Scan Utility\* (to use to scan over a network) as well as printer, fax (MF8280Cw only), and scanner drivers. \* Windows XP/Vista/7/8 only.

### MF Toolbox

The MF Toolbox provides a group of commands for you, such as to open a scanned image in an application, send it as an e-mail attachment file, and store it on the hard disk.

## Miscellaneous Software

The User Software CD-ROM contains Presto! PageManager. Install it from the [Custom Installation] option.

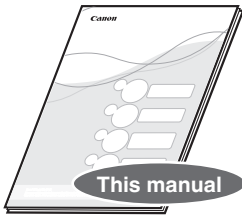
## About the LAN cable

The machine does not come with a LAN cable. Have it ready as necessary.

- Please use LAN Cable of Category 5 twisted pair cable or higher for support.
- When connecting the machine to a 100BASE-TX Ethernet network, all the devices on the LAN must be compatible with 100BASE-TX.

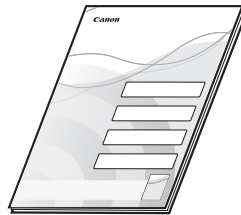
## Included Documents

### Printed Manuals



#### Getting Started

This manual describes the configuration and software installation.



#### Wireless LAN Setting Guide (MF8280Cw only)

This manual explains the wireless LAN setup procedures and troubleshooting during the setup.

### Manuals Included in the CD-ROM

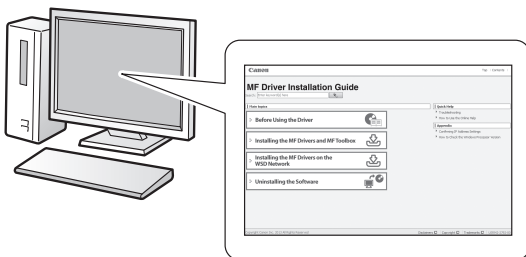


#### e-Manual

This manual explains all the features of the machine, and is categorized by subject.

#### Displaying the e-Manual from the CD-ROM

Insert the User Software CD-ROM in your computer, click [Manuals], and then click [e-Manual] in the displayed screen. If the User Software CD-ROM has been already inserted in your computer and [Manuals] is not displayed, remove the CD-ROM and insert it again.

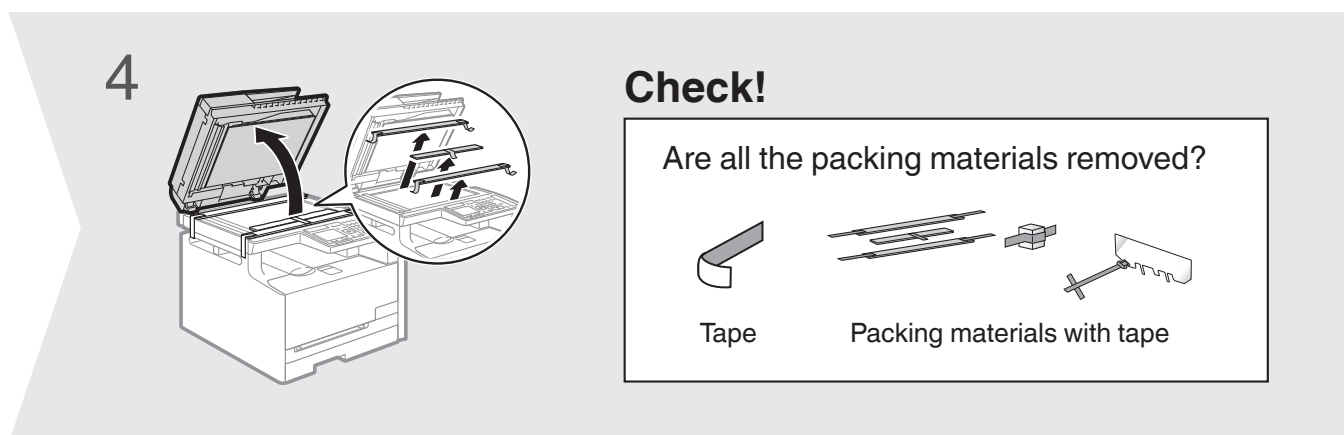
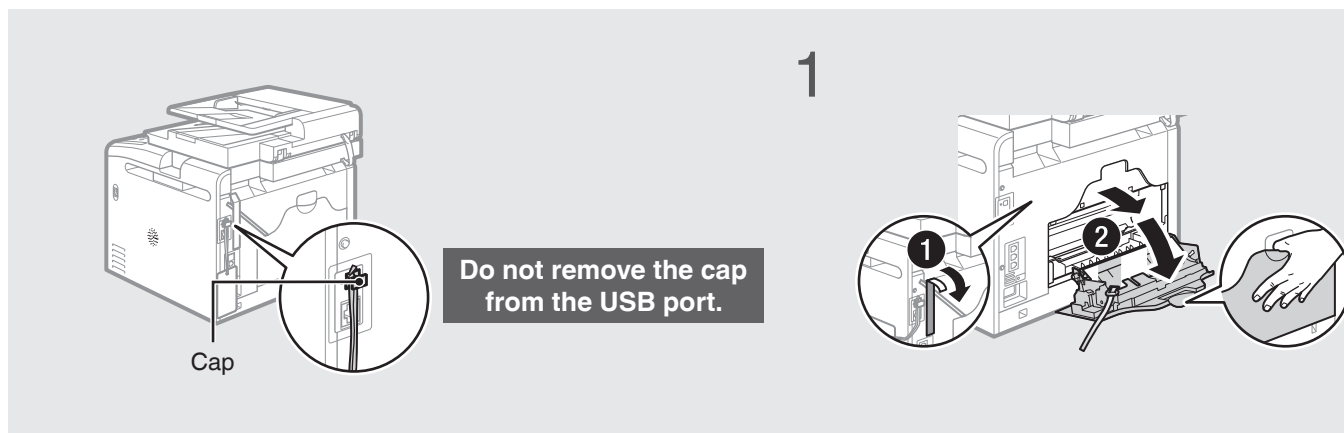


#### MF Driver Installation Guide

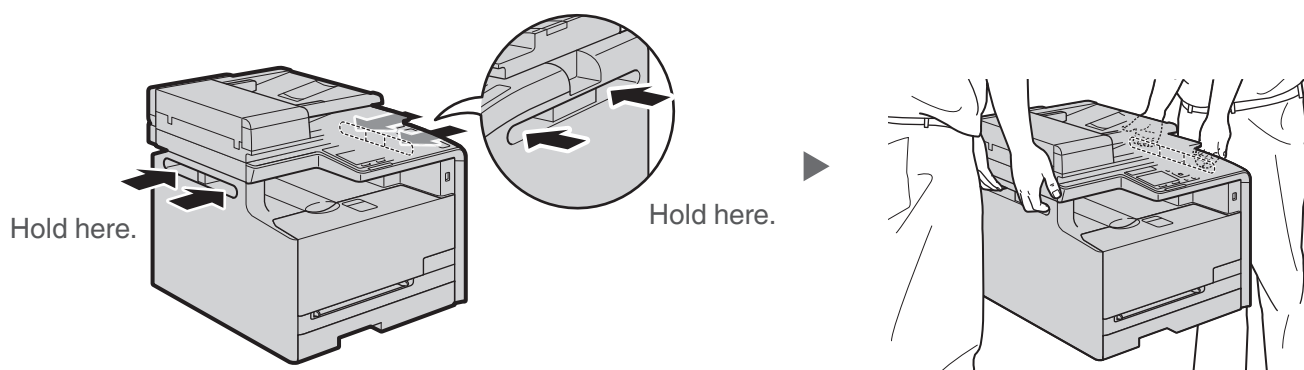
This manual describes how to install the MF Drivers, MF Toolbox, and software included on the User Software CD-ROM.

# Removing the Packing Materials

Remove all the packing materials, such as orange tape. Packing materials may change in form or placement, or may be added or removed without prior notice.



## Proper Handling

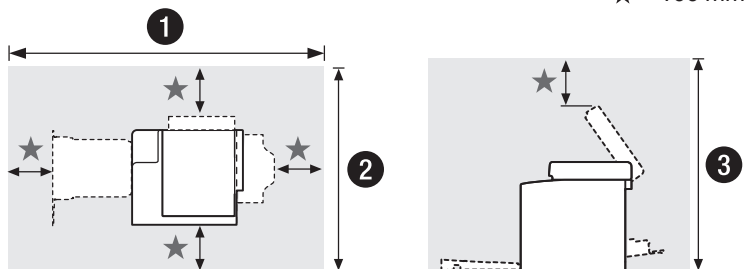




## Establishing an Installation Site

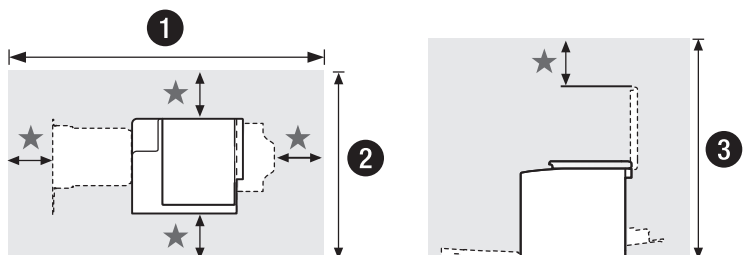
### MF8280Cw

- ① 1,229 mm
- ② 674 mm
- ③ 801 mm



### MF8210Cn

- ① 1,229 mm
- ② 630 mm
- ③ 805 mm



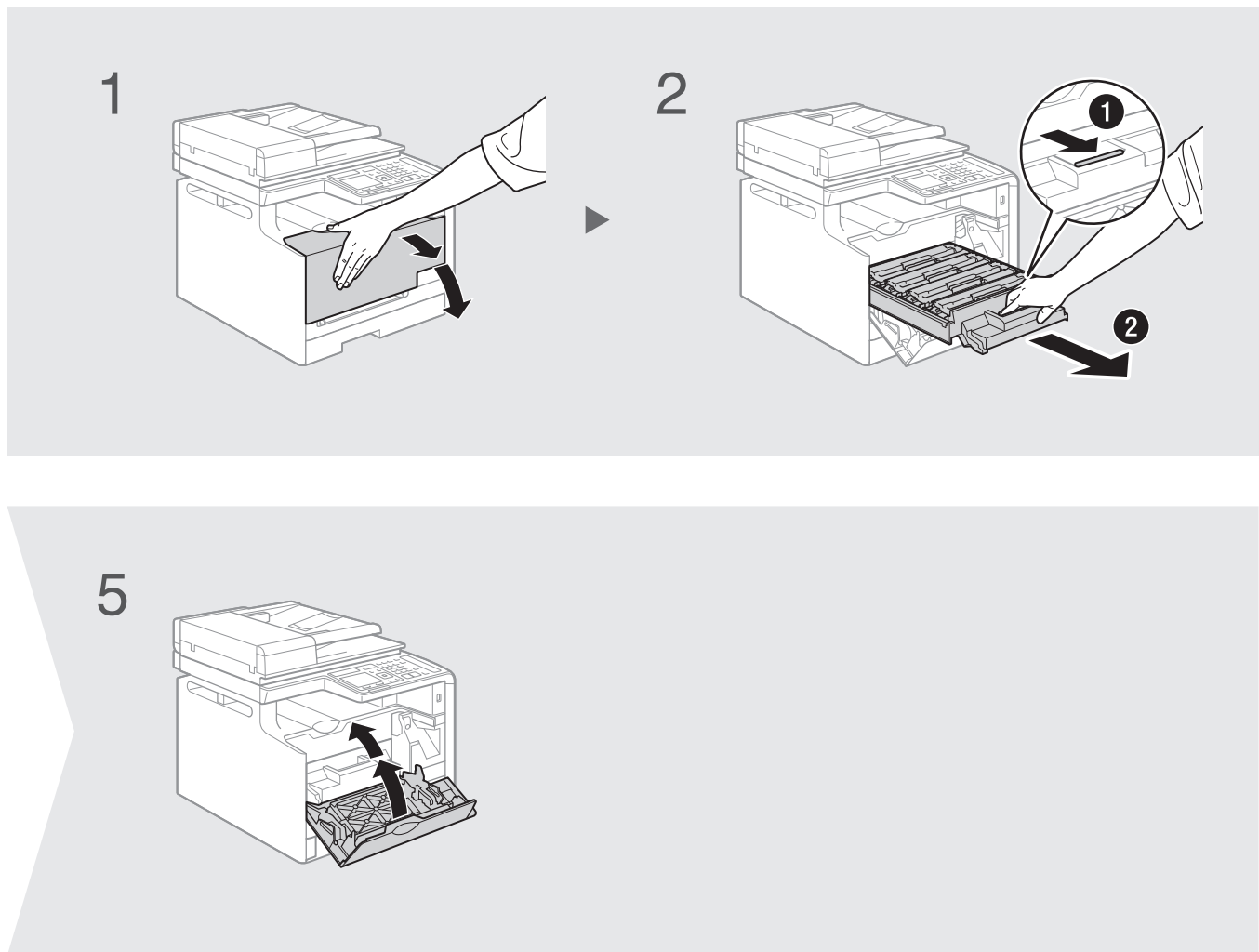
### Do not place the machine near the following:

- Alcohol, paint thinner, or other flammable substances ► If flammable substances come into contact with electrical parts inside the machine, this may result in a fire or electrical shock.
- Any medical equipment ► Radio wave emitted from this machine may interfere with medical equipment.
- Surfaces that are unstable, subject to excessive vibration, objects that could block the ventilation slot, dampness or dust, in direct sunlight or exposed to the elements, subject to high temperatures, open flames, and poor ventilation ► Installing the machine in locations with these characteristics may result in personal injury, fire, or electric shock.

### Ozone from the Unit

Although ozone is generated from the machine during operation, it does not have any affect on the human body. However, if you intend to use the machine for long periods of time, ensure that the installation location is well ventilated for a comfortable working environment.

# Preparing the Toner Cartridge

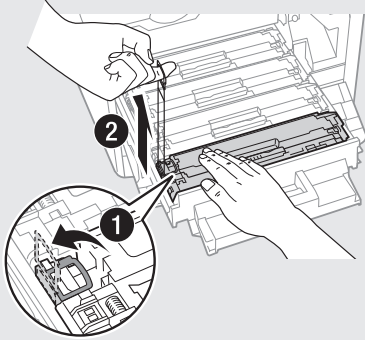


## Supplied Toner Cartridges

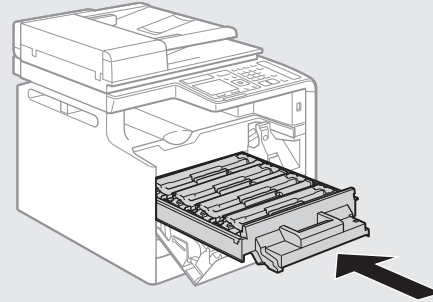
- The average yield is 800 sheets for the included K (Black) toner cartridge, and the composite yield is 800 sheets for the included C (Cyan), M (Magenta), and Y (Yellow) toner cartridges.\* The average yield of replacement toner cartridges differ from the supplied toner cartridges.
- To purchase replacement toner cartridges:  
➔ “About Replacement Toner Cartridges” in the e-Manual

\* The average yield is based on “ISO/IEC 19798” when printing A4 size paper with the default printing density.

3

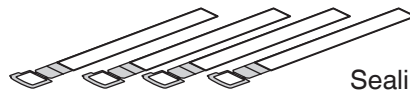


4



## Check!

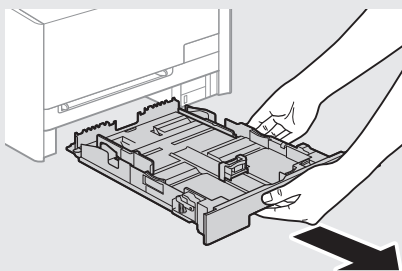
Are all the packing materials removed?



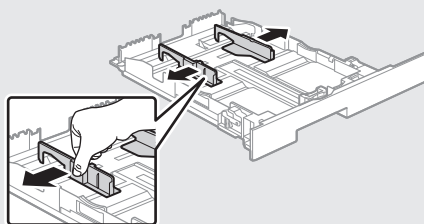
Sealing tape

# Loading Paper

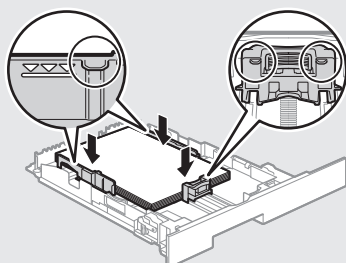
1



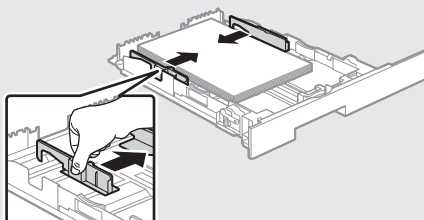
2 Spread the side paper guides a little wider than the width of the paper.



5 Set the paper under the hooks. Make sure that the paper stack does not exceed the load limit mark.



6 Slide the side paper guides inward until they are aligned securely against the edges of the paper.

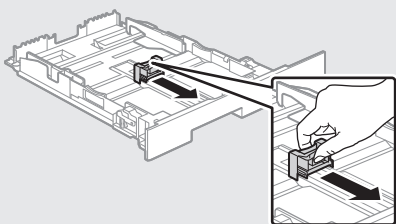


## Loading Paper Other than A4 Size

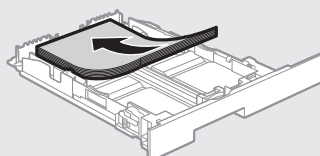
The procedure here is for loading A4 size paper. To load paper other than A4 size, such as A5 or B5, see “Loading Paper Other than A4 Size” (P. 24) after finishing the initial settings.



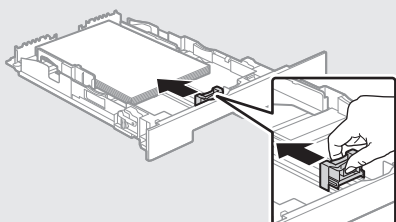
- 3 Press the lock release lever and spread the front-center paper guide a little wider than the length of the paper.



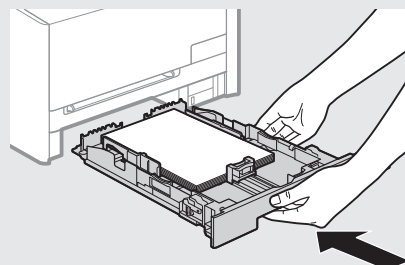
- 4 Load paper so that its edge is aligned with the rear side of the paper drawer.



- 7 Press the lock release lever, and slide the front-center paper guide inward until it is aligned securely against the edges of the paper.

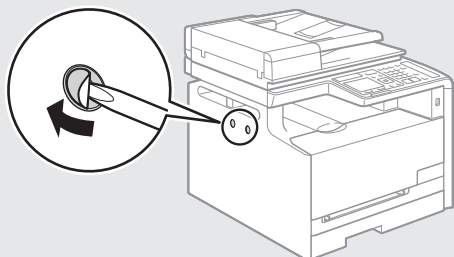


8

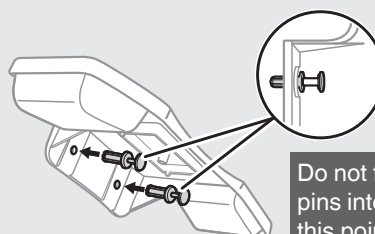


# Connecting the Handset (Optional for MF8280Cw)

1

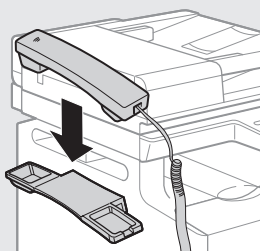


2

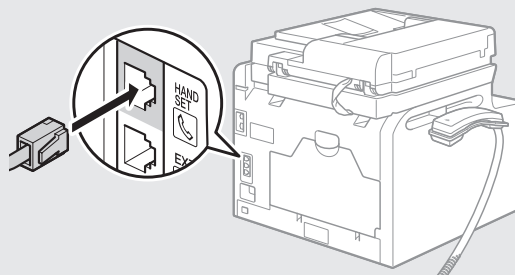


Do not fully insert the pins into the plugs at this point.

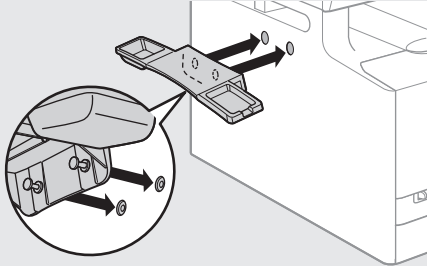
5



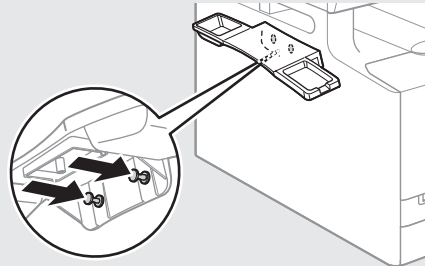
6



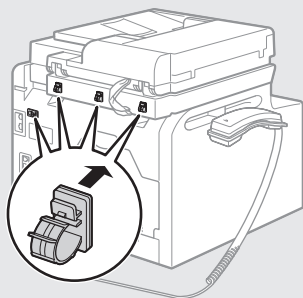
3



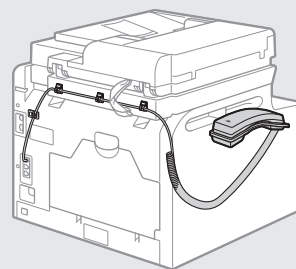
4



7

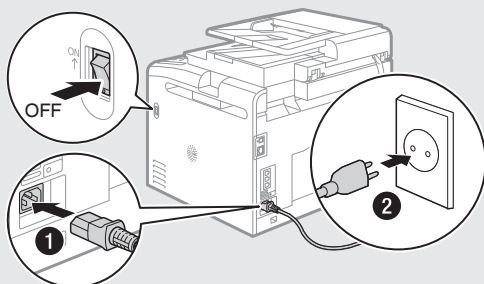


8



# Connecting the Power Cord

- 1 Make sure that the machine is turned OFF, and then connect the power cord.



**Do not connect the USB cable.**  
Connect the cable when installing the software.

- 2 Turn ON the machine.



- 5 Press <Next>.

Open the back cover, then confirm that the orange packing material has been removed.

Previous

Next

Check that the tabs and pieces of tape are removed from the toner cartridges.

Previous

Next

Check that paper is loaded in Drawer 1.

Previous

Next

- 8 Select whether or not to perform color correction.

It is recommended to perform color correction to obtain optimum copy or printout results.

Do you want to correct the color for a more accurate reproduction of the original?

Yes

No

Yes

**Perform color correction.**



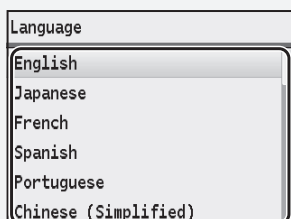
"Performing Color Correction" (P. 26)

No

**Proceed to the next step.**

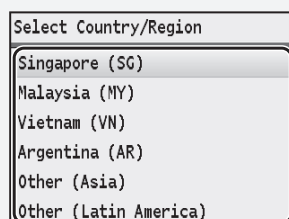
If you are using MF8210Cn, proceed to connect the machine to the computer (P. 14).

- 3 Press [▲] or [▼] to highlight a language, and then press [OK].

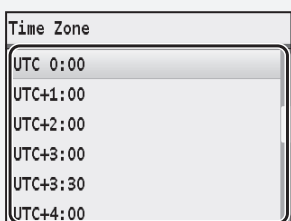


OK

- 4 Press [▲] or [▼] to highlight a region, and then press [OK].

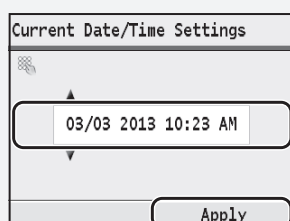


- 6 Press [▲] or [▼] to highlight your time zone\*, and then press [OK].



OK

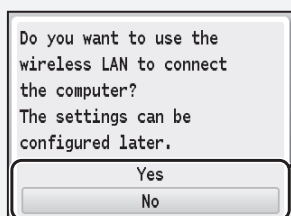
- 7 Enter the date and time, and then press <Apply>.



- Press [◀] or [▶] to move the cursor to the left and right.
- Press [▲] or [▼] to change the numeric value, or AM/PM.

The factory default settings for time display is set as 12-Hour.

- 9 Select whether or not to connect using wireless LAN immediately.



Yes

**Connect to the computer via a wireless LAN immediately.**

- ➔ Start from step ④ on P. 4 in Wireless LAN Setting Guide.

No

**Proceed to the next page.**

- Select <No> if you want to connect the machine to a computer via a wireless LAN later. When connecting, refer to Wireless LAN Setting Guide.
- If you do not connect the machine to a computer, proceed to fax configuration (P. 20).

\* The time zone setting indicates the time difference between your local time zone and Coordinated Universal Time (UTC). The correct time zone setting is required for Internet communications.

# Connecting to the Computer

## **Check!** Choosing the Method to Connect the Machine to the Computer

First, you need to decide on the method you would like to connect your machine to the computer. Choose from the following three options.

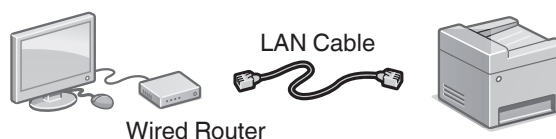


### Connecting via a Wired LAN

➔ P. 15

You can connect the machine to the computer through a wired router. Use the LAN cables to connect the machine to the wired router.

- Make sure that there is an available port in the router to connect the machine and the computer.
- Have a LAN Cable of Category 5 twisted-pair cable or higher ready.



### Connecting via a USB

➔ P. 17

You can connect the machine to the computer using a USB cable.



### Connecting via a Wireless LAN (MF8280Cw Only) ➔ See "Wireless LAN Setting Guide"

You can connect the machine to the computer through a wireless router\*. Since it is connected wireless, no LAN cables are needed.

\* A wireless router which supports IEEE 802.11b/g/n is required.



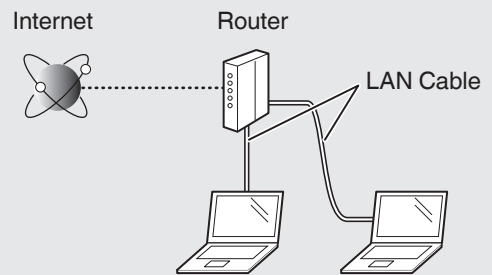
**If you are not sure whether your router is wired or wireless:**

See the instruction manual provided with your network device, or contact the manufacturer.

## 1

**Wired LAN Connection****Check the following first.**

- 1 Are the computer and the router properly connected using a LAN cable?  
For details, see the instruction manual provided with your network device, or contact the manufacturer.
- 2 Has the network settings on the computer been complete?  
If the computer is not properly configured, you may not use the wired LAN connection even after completing the following settings.

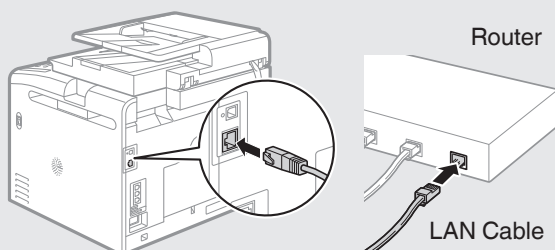
**NOTE**

- You cannot connect both the wired LAN and wireless LAN at the same time.
- When you connect to a network environment that is not security protected, your personal information could be disclosed to third parties. Please use caution.
- If you connect through a LAN in the office, contact your network administrator.

## 2

**Wired LAN Connection****Connect the LAN cable.**

The machine does not come with a LAN cable or router. Have LAN Cable of Category 5 twisted pair cable or higher ready.

**If the IP address on this machine has been changed:**

If the machine is on the same subnet as the computer, the connection is maintained.

**\* If you want to manually configure the IP address:**

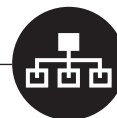
If you have set a static IP address to the IP address of the computer, manually configure a static IP Address.

- ➔ "Setting IPv4 Address" in the e-Manual
- ➔ "Setting IPv6 Address" in the e-Manual

**Wait for approximately 2 minutes.**  
The IP address will be automatically configured.\*

# Connecting to the Computer

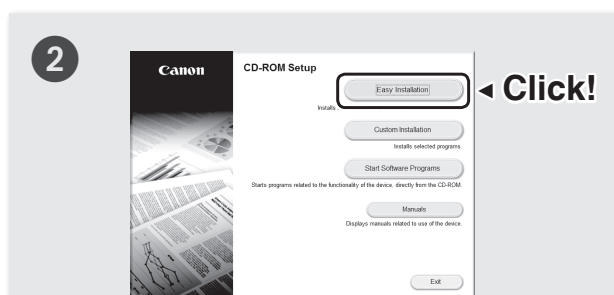
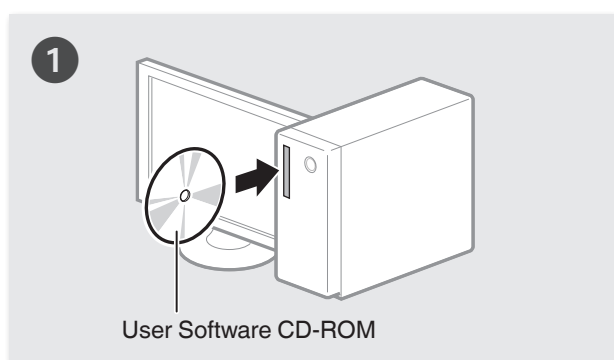
## 3 Wired LAN Connection Install the software.



Install the MF Drivers and the MF Toolbox. Make sure that the machine is turned ON, and log on to Windows as a user with administrative privileges. Shut down all applications that are running. See MF Driver Installation Guide for details about installation.

### NOTE

- If you are operating in the IPv6 environment, you may not install the software following the procedures below. See “Installing the MF Drivers on the WSD Network” in MF Driver Installation Guide.
- You may not use the scan function in the IPv6 environment.

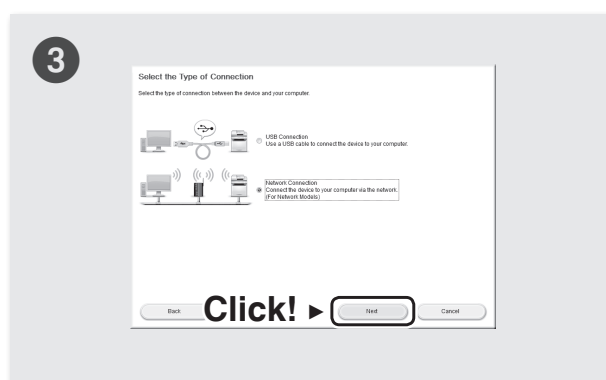


- Printer, fax (MF8280Cw only), scanner drivers and MF Toolbox will be installed.
- Select [Custom Installation] to install Presto! PageManager and the e-Manual.

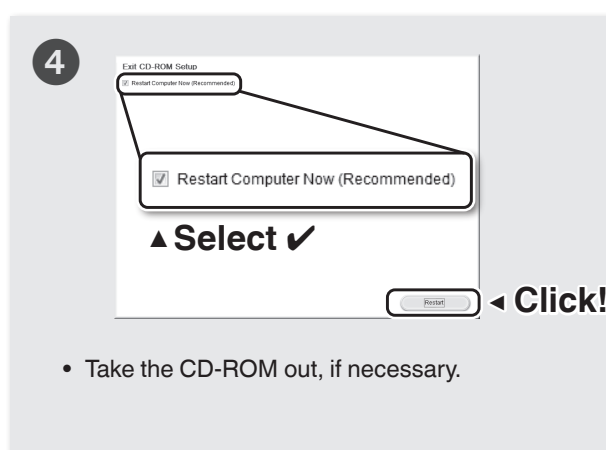
#### If the screen is not correctly displayed:

- Windows XP/Server 2003  
[Start] Menu → [Run] → enter [D:\MInst.exe]\* → [OK]
- Windows Vista/7/Server 2008  
[Start] Menu → [Search programs and files] (or [Start Search]) → enter [D:\MInst.exe]\* → press the [Enter] key
- Windows 8/Server 2012  
Right-click the lower-left corner of the screen → select [Run] → enter [D:\MInst.exe]\* → [OK]

\* The CD-ROM drive name is indicated as "D:" in this manual.



Follow the instructions on the screen to continue.



- Take the CD-ROM out, if necessary.

Computer connection via the wired LAN is now complete.

➡ If you are using MF8280Cw, proceed to P. 20 to configure the fax.



# 1

## USB Connection

### Install the Software.



Install the MF Drivers and the MF Toolbox. Make sure that the machine is turned ON, and log on to Windows as a user with administrative privileges. Shut down all applications that are running. See MF Driver Installation Guide for details about installation.

Do not connect the USB cable yet.

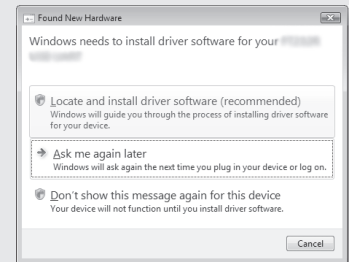
Connect the USB cable after installing the MF Drivers and the MF Toolbox.

If you already connected the USB cable:

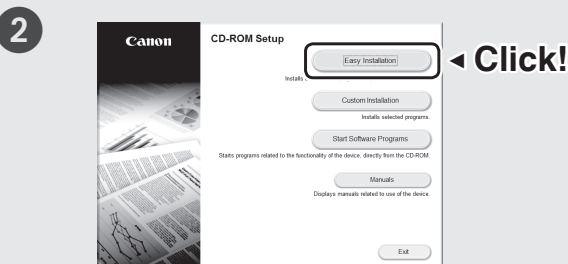
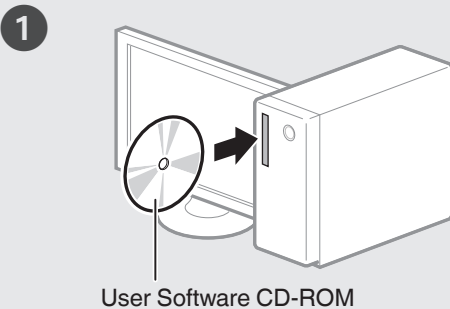
Windows 7/8: ① Disconnect the USB cable from the computer, ② and then proceed to step ①.

Windows XP/Vista: ① If the dialog box on the right appears, disconnect the USB cable from the computer\*, ② click [Cancel], ③ and then proceed to step ①.

\* If the USB cable is disconnected and the dialog box disappears, proceed to step ①.



For Windows XP/Vista



- Printer, fax (MF8280Cw only), scanner drivers and MF Toolbox will be installed.
- Select [Custom Installation] to install Presto! PageManager and the e-Manual.

**If the screen is not correctly displayed:**

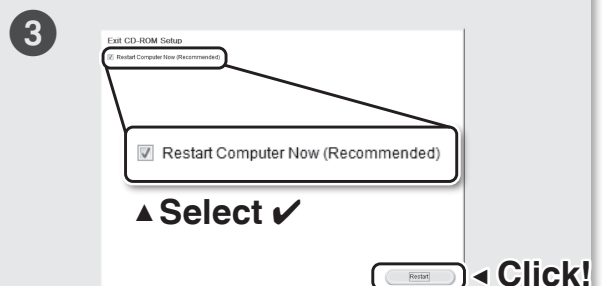
- Windows XP  
[Start] Menu → [Run] → enter [D:\MInst.exe]\* → [OK]

- Windows Vista/7  
[Start] Menu → [Search programs and files] (or [Start Search]) → enter [D:\MInst.exe]\* → press the [Enter] key

- Windows 8  
Right-click the lower-left corner of the screen → select [Run] → enter [D:\MInst.exe]\* → [OK]

\* The CD-ROM drive name is indicated as "D:" in this manual.

Follow the instructions on the screen to continue.



- Remove the CD-ROM, if necessary.

➡ Proceed to P. 18

## Connecting to the Computer

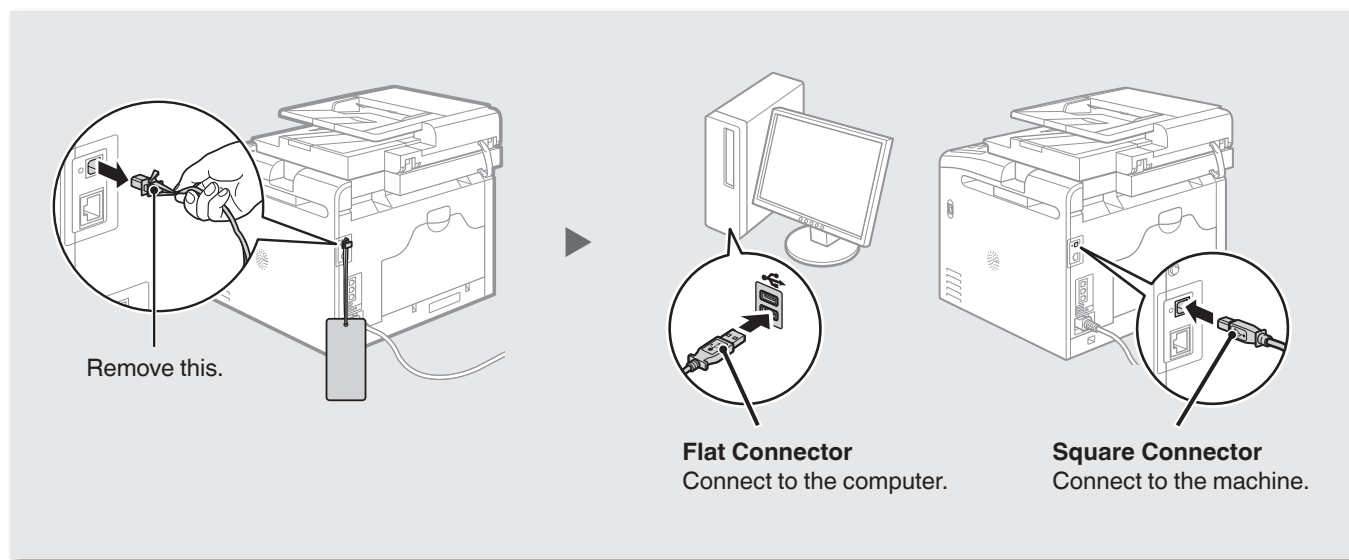
# 2

### USB Connection

#### Connect the USB cable.



After installing the software, such as MF Driver, connect the USB cable. Make sure the software is installed first.



Computer connection via the USB is now complete.

➡ If you are using MF8280Cw, proceed to P. 20 to configure the fax.



# Configuring the Fax (MF8280Cw Only)

## Check! Selecting a Receive Mode That Fits Your Purpose

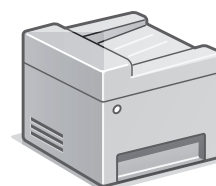
Choose your purpose to know the **receive mode** to use. **Remember** the receive mode to configure the setting in "Selecting the Fax Receive Mode" (P. 22).

Fax

### Use for Fax Only/No Voice Calls

You can use only for fax and may not use for voice calls. You do not need to connect the external telephone.

**Receive Mode** ⇒ Auto



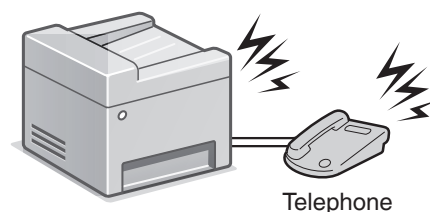
Phone

### Mainly Use for Voice Calls/Almost Not Use for Fax

Connect an external phone\* to receive calls. Press the start button to receive faxes.

\* You can also use an optional handset.

**Receive Mode** ⇒ Manual



Telephone

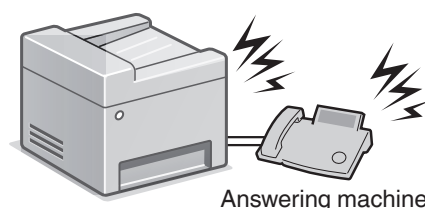
Phone Fax

### Use for Fax and Voice Call

#### ① Using an answering machine

Connect an external answering machine to record voice messages when you are out, as well as receive calls. Faxes will be automatically received.

**Receive Mode** ⇒ Answering Machine



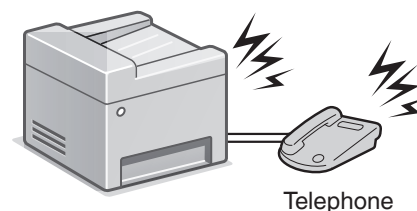
Answering machine

#### ② Using a General Telephone

Connect the external telephone\*. Faxes will be automatically received and the machine will ring when voice calls come in.

\* You can also use an optional handset.

**Receive Mode** ⇒ Fax/Tel Auto Switch



Telephone

## Set Up 1 Registering the Fax Number and Unit Name



When do you want to perform fax setup?

Set Up Now

Set Up Later

- If you select <Set Up Later>, the receive mode will be set to <Auto>.
- To reconfigure the settings, press → <Fax Settings> → <Fax Setup Guide>.

OK

Register the unit telephone number for this device.

Next

Register Unit Telephone Number

= 1234567

+

Apply

- Enter the fax number using the numeric keys, and then press <Apply>.

Register the unit name.  
(Sender name, company name, etc.)

Next

Register Unit Name

A

CANON

A/a/12

Apply

- Enter the unit name, and then press <Apply>.
- ➡ “Entering Text” (P. 35)

➡ Proceed to the next page

**Registered information will be printed on the recipient's paper.**

The fax number and unit name registered here will be printed on the recipient's paper as the sender information.

Number's Type		Fax Number	
Sent Time	Unit Name	Page Number	
03/03 2013 02:07 PM	FAX 123XXXXXXX	CANON	0001/0001

## Configuring the Fax (MF8280Cw Only)

### Set Up 2 Selecting the Fax Receive Mode

Set the receive mode that you confirmed in “Selecting a **Receive Mode** That Fits Your Purpose” (P. 20).

Set the RX mode.  
Answer the following questions  
to select the appropriate RX  
mode.

Next

Do you want to use this device  
for fax only (no telephone)?

Yes  
No

- To set to **Auto** mode → <Yes> → [OK]
- To set to other receive modes → <No> → [OK]

No

Do you want to receive faxes  
automatically but answer the  
telephone manually?

Yes  
No

- To set to **Fax/Tel Auto Switch** mode → <Yes> → [OK]
- To set to other receive modes → <No> → [OK]

No

Do you want to use an  
answering machine to  
answer the telephone?

Yes  
No

- To set to **Answering Machine** mode → <Yes> → [OK]
- To set to **Manual** mode → <No> → [OK]

<Auto>

Yes

<Fax/Tel>

Yes

<Answer>

Yes

<Manual>

No

RX Mode Settings  
RX Mode: XXXX <Check!

Reset Apply

Connect Telephone Line

Refer to the illustration on  
the next screen to connect  
the line to A.

Next

The screen that appears varies  
depending on the receive mode  
selected.

Connect to socket on back side.

A

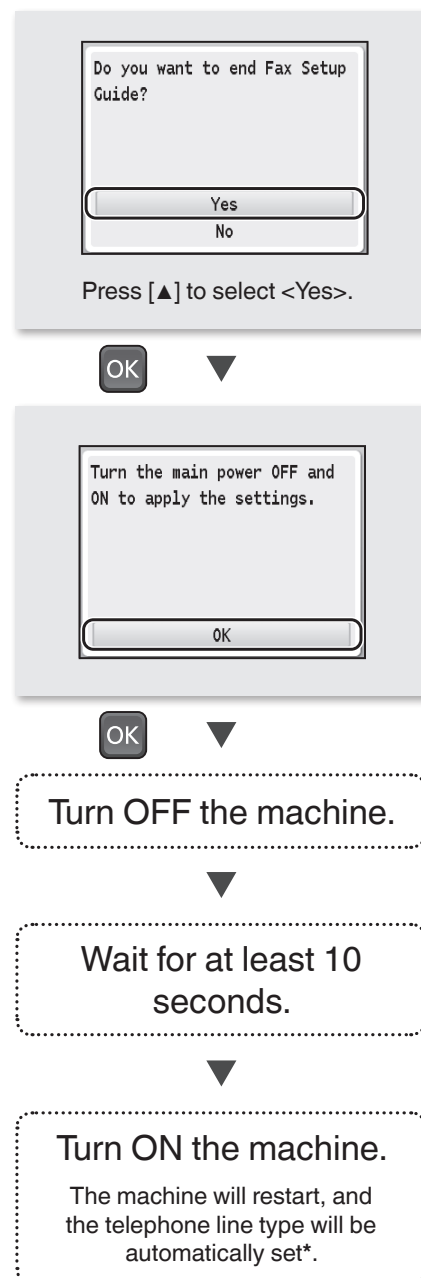
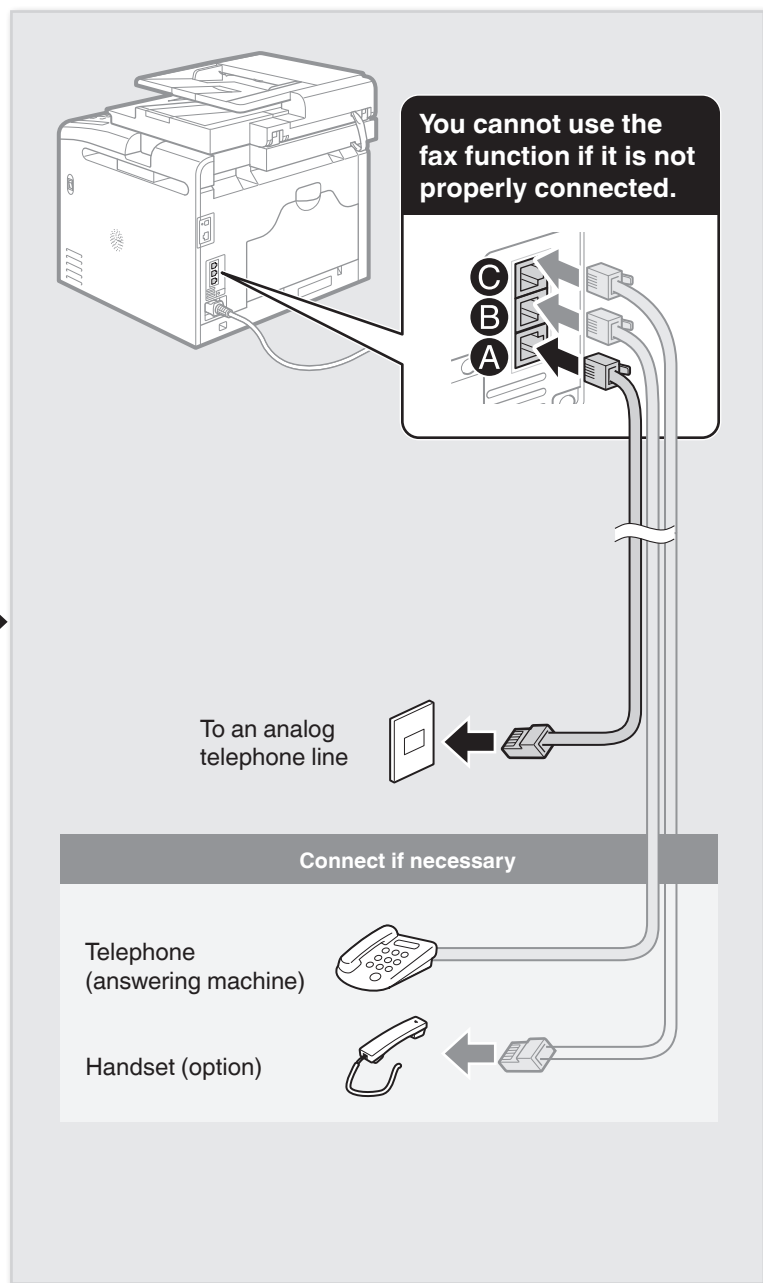
Next

The screen that appears varies  
depending on the receive mode  
selected.

#### When connecting a telephone with fax functions:

Set the fax receive mode of the telephone to  
“manual.”

### Set Up 3 Connecting the Telephone Line



**\* If the telephone line type is not automatically set:**

See the e-Manual to set manually.

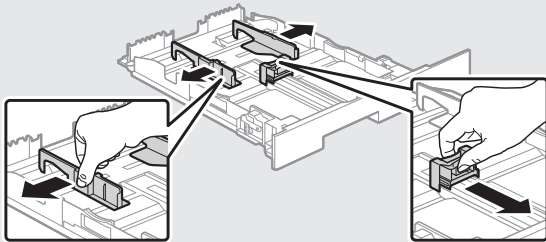
- ➡ “Setting Menu List” → “Fax Settings (MF8580Cdw / MF8280Cw Only)” → “Basic Settings” → “Select Line Type” in the e-Manual

# Appendix

## Loading Paper Other than A4 Size

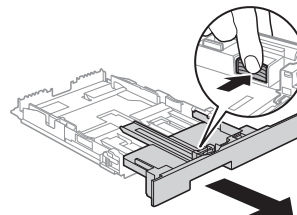
To load paper other than A4 size, such as A5 or B5, see “Loading Paper” (P. 8) and the following procedure to load paper and specify the paper size and type.

1



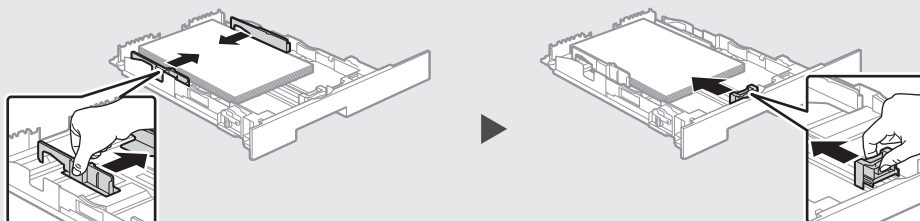
- Pull out the paper drawer.
- Slide the paper guides, and spread them a little wider than the actual paper width.

### When loading Legal size paper



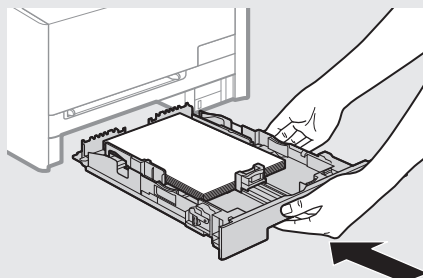
Press the lock release lever and adjust the length of the paper drawer.

2

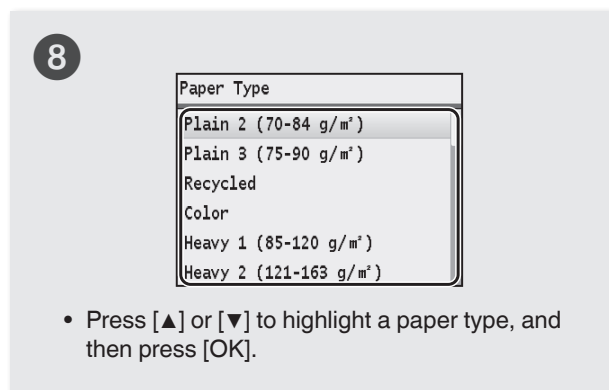
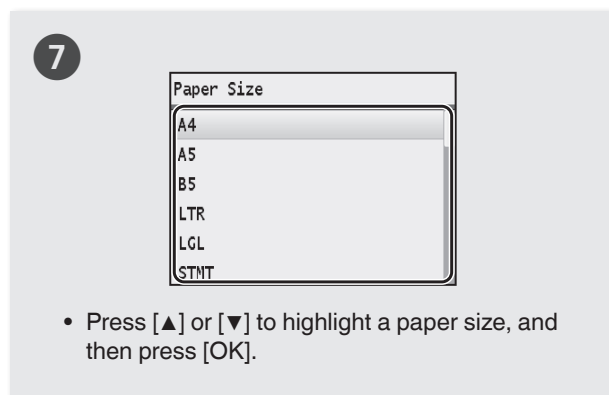
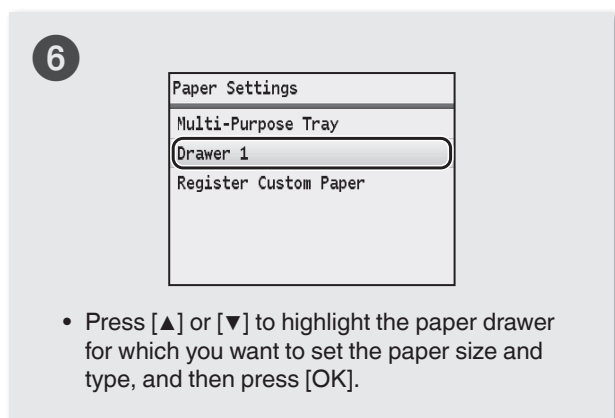
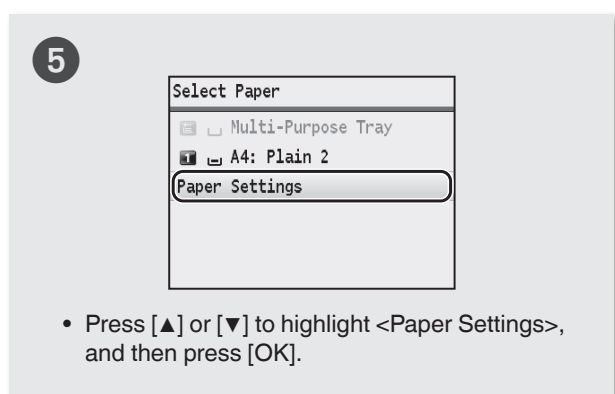
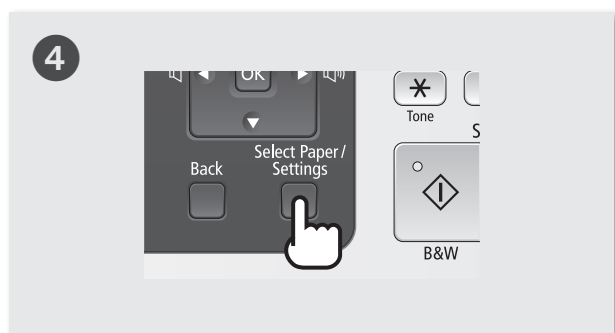


- After loading paper, slide the side paper guides and the front-center paper guide inward until they are aligned securely against the edges of the paper.
- Make sure that the paper stack does not exceed the load limit mark.

3







## Loading Preprinted Paper

- ➔ “Loading Preprinted Paper” in the e-Manual

## Performing Color Correction

It is recommended to perform color correction to obtain optimum copy or printout results.

**1**

Allowed Paper:  
Size: A4, LTR, 16K  
Type: Plain1-3, Recycled

OK

- Make sure that paper is loaded, and then press [OK].



**2**

Steps (Start: Press OK)

1. Print Image for Adjustment  
2. Scan Image for Adjustment

- Confirm the procedure for color correction, and then press [OK].
- An adjustment image is printed.



**3**

Place Image 1 on the glass with the black side toward the back.



**4**

- Open the feeder or the platen glass cover, place the adjustment image on the platen glass with the print side face down, and then close the feeder or the platen glass cover.
- Place the paper so that the black stripe is at the back side of the machine.



**5**

Tone Start

B&W Color Stop




**6**

- When <Finished> is displayed, remove the adjustment image placed on the platen glass in Step 4.

### If <Correction failed.> appears:

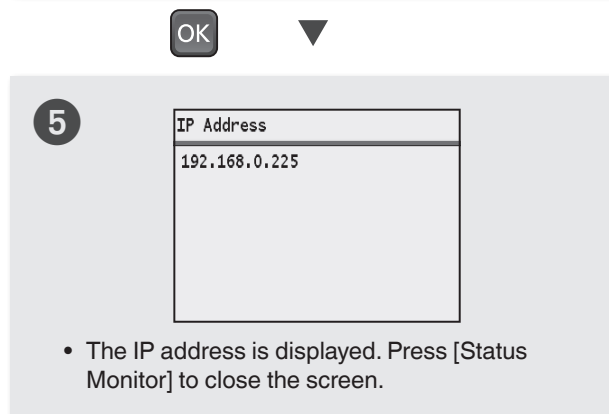
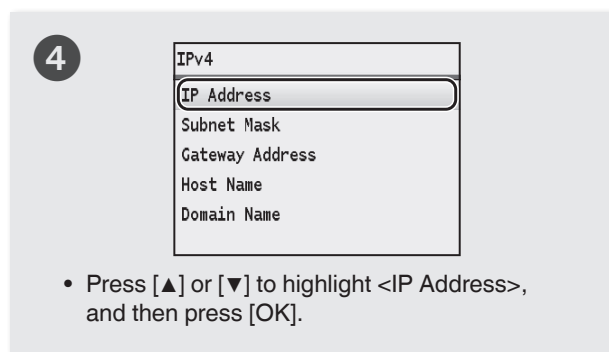
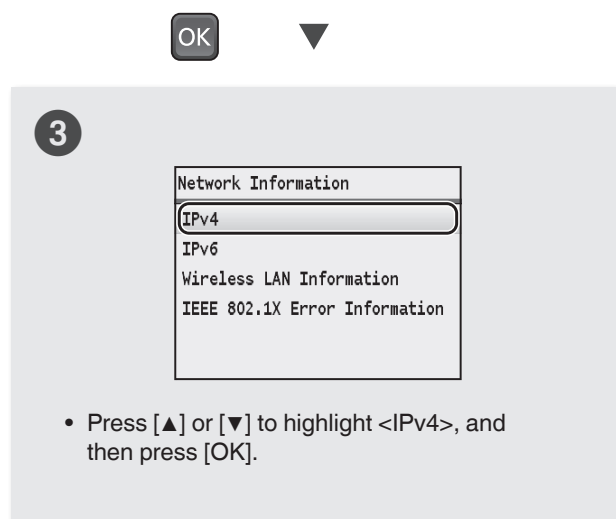
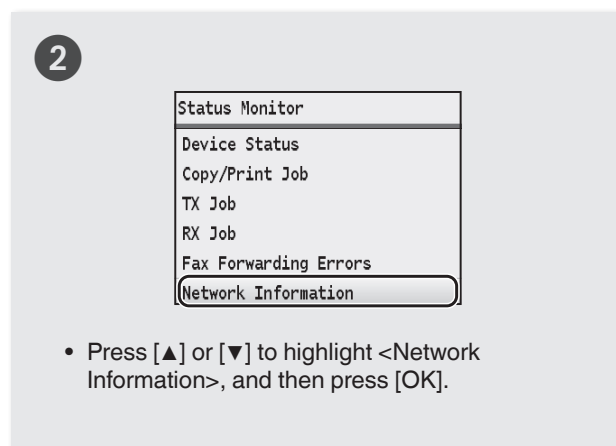
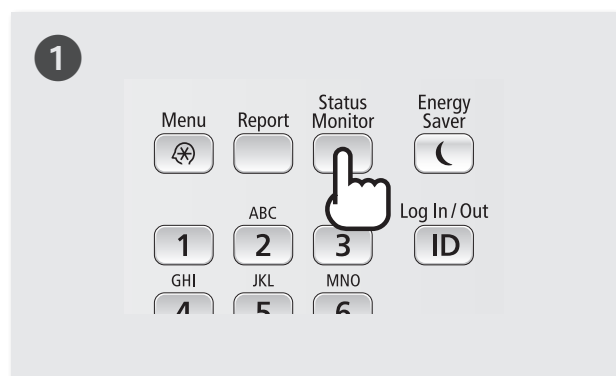
- Is the paper loaded correctly?  
→ Load plain or recycled paper of A4/Letter size in the paper drawer.
- Is the adjustment image placed on the platen glass correctly?  
→ Place the adjustment image with the print side face down and the black stripe toward the back of the machine.
- Has a paper jam occurred?  
→ Remove the jammed paper.

If you want to perform color correction again, press , and then select the following settings in the following order.

<Adjustment/Maintenance> → <Auto Adjust Gradation >  
→ <Adjust Copy Image>

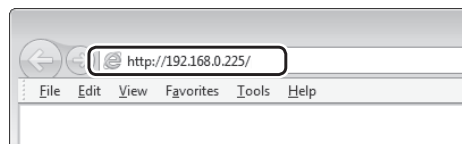
## Checking the IP Address

You can check the IP address of the machine. Use it when you need to enter the IP address during the configuration or registration.

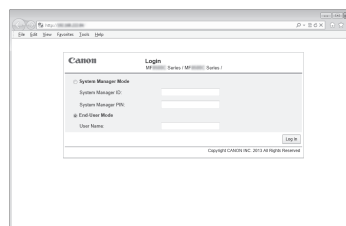


### Check if the Machine Is Connected to the Network Correctly

Start a Web browser of the computer that is connected to the network, enter [http://IP address of the machine], and then press [ENTER]. (Example: http://192.168.0.225/)



The screen below (Remote UI) should be displayed.\*



\* If the remote UI screen is not displayed, see the e-Manual.

## Perform Useful Tasks

You can use various functions in this machine. Following functions are the overview of the main functions that you can use routinely.

### Copy

#### Enlarged/Reduced Copies

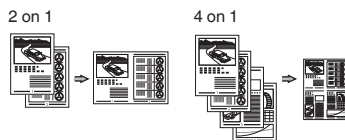
You can enlarge or reduce standard size documents to copy on standard size paper or specify the copy ratio in percentage.

#### Collating

You can sort copies into sets arranged in page order.

#### Reduced Layout


You can reduce multiple documents to copy them onto one sheet.



#### Copying ID Card

You can make a copy of a 2-sided card onto one side of paper.

#### Paper Save Copy

You can choose the desired copy settings from the options displayed when you select [  Copy ] on the operation panel.

### Fax\*

#### Sending a Document Directly from a Computer (PC Fax)

In addition to the normal sending and receiving faxes, you can use the PC fax.

#### Sending

You can specify the destinations using the Address Book, enabling you to send documents quickly and easily. Destination search/Favorites list/Coded dialing/Destination Group/Specifying from the sending history/Sequential broadcast

### Receiving

- Receiving in the memory  
You can store the received documents in the memory. You can print the stored documents at any time, and if you do not need them, you can delete them.



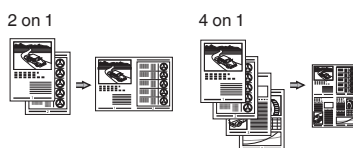
- Remote Receiving  
If an external telephone is connected, you can switch to the fax receiving mode immediately using the dial buttons of the telephone during a phone call.

### Print

#### Enlarged/Reduced Printing

#### Reduced Layout

You can reduce multiple documents to print them onto one sheet.



#### Poster Printing

#### Watermark Printing

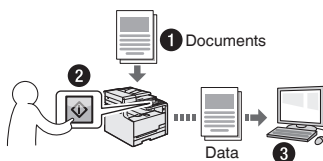
#### Displaying a Preview before

#### Printing

#### Selecting a "Profile"

### Scan

#### Saving the Documents Using the Operation Panel of the Machine

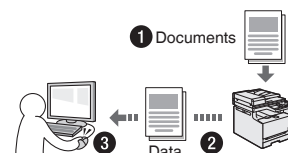


#### Scanning with [ ]/[ ]

You can simplify the procedure for selecting the destination and making the scan settings by registering them in the keys on the operation panel.

#### Saving the Documents Using Operations from a Computer

- Scanning with the MF Toolbox
- Scanning from an Application



#### Saving in a USB Memory

You can save scanned documents in a USB memory connected to the machine.

### Network Settings

This machine comes equipped with a network interface that you can construct a network environment easily. If you use the MF8280Cw, you can connect to the network using the wireless LAN. Also you can print a document, use the PC fax (MF8280Cw only), and use the network scan from all computers which are connected with the machine. The machine supports to increase work efficiency as a shared machine in the office.

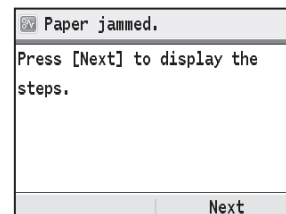
### Remote UI

You can understand the condition of the machine from the computers on the network. You can access the machine and manage jobs or specify various settings via network.

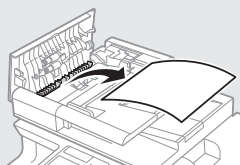
\* MF8280Cw Only

## Clearing Paper Jams

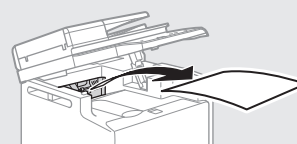
If the following screen appears, a paper jam has occurred in the feeder or inside the machine. Follow the procedure displayed on the screen to remove the jammed document or paper. This manual indicates only areas where paper jams occur. For details on the procedures, see the e-Manual.



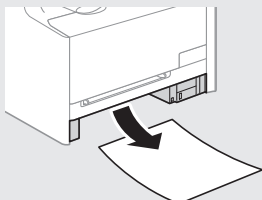
Feeder (MF8280Cw only)



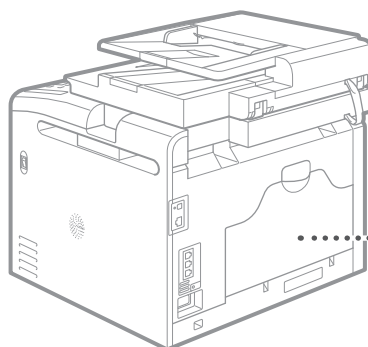
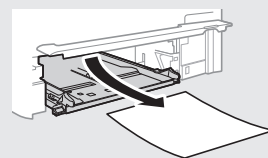
Output area



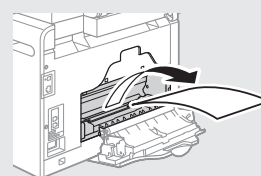
Paper drawer



Manual feed slot



Back side



## Replacing Toner Cartridges

Toner cartridges are consumables. When the toner becomes nearly empty or has run out completely in the middle of a job run, a message appears on the screen, or the following problems may occur. Take the appropriate action accordingly.

### When a Message Appears

When the toner becomes nearly empty in the middle of a job run, a message appears on the screen.

Message	When the message is displayed on the screen	Description and solutions
Prepare the <Toner Color>* toner cartridge.	The toner cartridge needs a replacement soon.	We recommend checking the level of remaining toner and replacing the cartridge with a new one before printing high-volume documents. ➔ e-Manual "Replacing Toner Cartridges" If this message is displayed, the incoming fax will be stored in the memory without being printed. Also, reports may not be printed, even if they are set to be printed automatically. If <Continue Printing When Toner Is Low> in <RX Print Settings> is set to <On>, however, printing will be continued, but faxes may fade or blur. ➔ e-Manual "Printing Reports and Lists" ➔ e-Manual "Setting Menu List"
End of Toner Cart. Lifetime <Toner Color>*	The toner cartridge has reached the end of its life.	If this message does not disappear, replace the toner cartridge. You can continue printing, but the print quality cannot be guaranteed. ➔ e-Manual "Replacing Toner Cartridges"
End of cart. parts lifetime. Cart. replacement recommended. <Toner Color>*	The machine may not print properly because a toner cartridge that has reached the end of its lifetime is still in the machine.	If this message does not disappear, replace the toner cartridge. You can continue printing, but the print quality may be poor. ➔ e-Manual "Replacing Toner Cartridges"

\* Black, yellow, magenta, or cyan will appear in <Toner Color>.

### If Printouts are Poor in Quality

If your printouts begin to show any of the following features, one of your toner cartridges is nearly empty. Replace the nearly empty toner cartridge even if no message is displayed.

White streaks appear



Partially faded



Uneven density



Toner smudges and splatters appear



Blank space of originals becomes grayish in printouts



## Symbols Used in This Manual

### **WARNING**

Indicates a warning concerning operations that may lead to death or injury to persons if not performed correctly. To use the machine safely, always pay attention to these warnings.

### **CAUTION**

Indicates a caution concerning operations that may lead to injury to persons if not performed correctly. To use the machine safely, always pay attention to these cautions.

### **IMPORTANT**


Indicates operational requirements and restrictions. Be sure to read these items carefully to operate the machine correctly, and avoid damage to the machine or property.



Indicates an operation that must not be performed. Read these items carefully, and make sure not to perform the described operations.

## Keys and Buttons Used in This Manual

The following symbols and key names are a few examples of how keys to be pressed are expressed in this manual.

- Operation panel keys:
  - Key icon
  - Example:  

- Display: <Specify the destination.>
- Buttons and items on the computer display: [Preferences]

## Illustrations and Displays Used in This Manual

Illustrations and displays used in this manual are which of MF8280Cw unless specified.

## Important Safety Instructions

Please read the “Important Safety Instructions” in this manual and in the e-Manual thoroughly before operating the machine.

As these instructions are intended to prevent injury to the user and other persons or to prevent destruction of property, always pay attention to these instructions and operational requirements.

Please note that you are responsible for all damages caused by failure to follow the directions provided herein, using the device for any purpose for which it was not intended, or repairs or alterations made by anyone other than a Canon-approved technician.

## Installation

### **WARNING**

- Do not install the machine near flammable substances such as alcohol-based products or paint thinners. If these substances come in contact to the electrical parts inside the machine could ignite these substances and cause a fire or increase your risk of electric shock.

- Do not place necklaces and other metal objects or containers filled with liquid on the machine. If foreign substances come into contact with electrical parts inside the machine, this may result in a fire or electrical shock. If any of these substances falls into the machine, turn off the power to the machine immediately and contact your local Canon dealer.
- Do not use near any medical equipment. Radio wave emitted from this machine may interfere with medical equipments, which may result in serious accidents.

### **CAUTION**

- Do not install the machine in the following locations. Doing so may result in personal injury, fire or electrical shock.
  - Unstable location
  - A location subject to excessive vibrations
  - A location where block the ventilation slots (too close to walls, bed, shaggy rug, and other similar objects)
  - A damp or dusty location
  - A location exposed to direct sunlight or an outside place
  - A location subject to high temperatures
  - A location near open flames
  - A location with poor ventilation system
- Although ozone is generated from the machine during operation, it does not have any affect on the human body. However, if you intend to use the machine for long periods of time, ensure that the installation location is well ventilated.
- Do not connect unapproved cables to this machine. Doing so may result in a fire or an electric shock.

## Power Supply

### **WARNING**

- Do not use power cords other than the one provided, as this can result in a fire or electrical shock.
- Do not modify or bend the power cord and do not pull on it with great force. Do not place heavy objects on the power cord. Damaging the power cord may result in a fire or an electric shock.
- Do not plug or unplug the power plug with wet hands, as this can result in electrical shock.
- Do not use extension cords or multi-plug power strips with this machine. Doing so may result in a fire or electric shock.
- Do not bundle up or tie up the power cord in a knot, as this can result in a fire or electrical shock.
- Insert the power plug completely into the AC power outlet. Failure to do so can result in a fire or electrical shock.
- Remove the power plug completely from the power outlet during a thunder storm. Failure to do may result in a fire, electric shock, or malfunction.

### **CAUTION**

- Use only a power supply that meets the voltage requirements listed herein. Failure to do so may result in a fire or electric shock.
- Do not obstruct the power outlet where this machine is connected, so that you can unplug the power cord easily in an emergency.







## Legal Notices

### Model Names

MF8280Cw (F164702)  
MF8210Cn (F164700)

### EMC requirements of EC Directive

This equipment conforms with the essential EMC requirements of EC Directive. We declare that this product conforms with the EMC requirements of EC Directive at nominal mains input 230 V, 50 Hz although the rated input of the product is 220 to 240 V, 50/60 Hz. Use of shielded cable is necessary to comply with the technical EMC requirements of EC Directive

### Laser Safety Information

Laser radiation could be hazardous to the human body. For this reason, laser radiation emitted inside this equipment is hermetically sealed within the protective housing and external cover. No radiation can leak from the machine in the normal operation of the product by the user.

This machine is classified as a Class 1 Laser Product under IEC 60825-1: 2007, EN60825-1: 2007.

### 220 to 240 V Model

The label shown below is attached to the laser scan unit on the machine.



This machine has been classified under IEC 60825-1: 2007, EN60825-1: 2007 and conforms to the following classes:

CLASS 1 LASER PRODUCT

LASER KLASSE 1

APPAREIL À LASER DE CLASSE 1

APPARECCHIO LASER DI CLASSE 1

PRODUCTO LÁSER DE CLASE 1

APARELHO A LASER DE CLASSE 1

LUOKAN 1 LASER-TUOTE

LASERPRODUKT KLASSE 1

### ⚠ CAUTION

Use of controls, adjustments, or performance of procedures other than those specified in the manuals for the machine may result in hazardous radiation exposure.

## Legal Limitations on Usage of Your Product and the Use of Images

Using your product to scan, print or otherwise reproduce certain documents, and the use of such images as scanned, printed or otherwise reproduced by your product, may be prohibited by law and may result in criminal and/or civil liability. A non-exhaustive list of these documents is set forth below. This list is intended to be a guide only. If you are uncertain about the legality of using your product to scan, print or otherwise reproduce any particular document, and/or of the use of the images scanned, printed or otherwise reproduced, you should consult in advance with your legal advisor for guidance.

- Paper Money
- Traveler's Checks
- Money Orders
- Food Stamps
- Certificates of Deposit
- Passports
- Postage Stamps (canceled or uncanceled)
- Immigration Papers
- Identifying Badges or Insignias
- Internal Revenue Stamps (canceled or uncanceled)
- Selective Service or Draft Papers
- Bonds or Other Certificates of Indebtedness
- Checks or Drafts Issued by Governmental Agencies
- Stock Certificates
- Motor Vehicle Licenses and Certificates of Title
- Copyrighted Works/Works of Art without Permission of Copyright Owner

Considerable effort has been made to make sure that the manuals for the machine are free of inaccuracies and omissions. However, as we are constantly improving our products if you need an exact specification, please contact Canon.

---

### Disclaimers

The information in this document is subject to change without notice. CANON INC. MAKES NO WARRANTY OF ANY KIND WITH REGARD TO THIS MATERIAL, EITHER EXPRESS OR IMPLIED, EXCEPT AS PROVIDED HEREIN, INCLUDING WITHOUT LIMITATION, THEREOF, WARRANTIES AS TO MARKETABILITY, MERCHANTABILITY, FITNESS FOR A PARTICULAR PURPOSE OF USE OR NON-INFRINGEMENT. CANON INC. SHALL NOT BE LIABLE FOR ANY DIRECT, INCIDENTAL, OR CONSEQUENTIAL DAMAGES OF ANY NATURE, OR LOSSES OR EXPENSES RESULTING FROM THE USE OF THIS MATERIAL.

### Trademarks

Canon, the Canon logo, and imageCLASS are registered trademarks of Canon Inc. in the United States and may also be trademarks or registered trademarks in other countries.

Microsoft, Windows, Windows Vista and Windows Server are either registered trademarks or trademarks of Microsoft Corporation in the United States and/or other countries.

All other product and brand names are registered trademarks, trademarks or service marks of their respective owners.

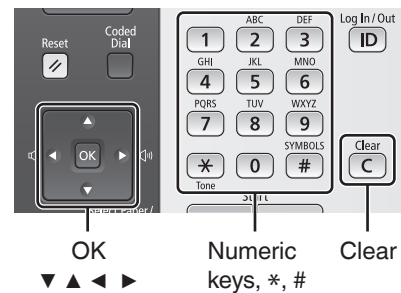
### Copyright

© CANON INC. 2013 All Rights Reserved

No part of this publication may be reproduced, transmitted, transcribed, stored in a retrieval system, or translated into any language or computer language in any form or by any means, electronic, mechanical, magnetic, optical, chemical, manual, or otherwise, without the prior written permission of Canon Inc.

# Entering Text

During the setup or initial configuration, you may need to enter letters and numbers. Use [▲], [▼], [◀], [▶], numeric keys, [\*], [#], and [OK] to enter text.



Numeric Key	Entry Mode (See below on how to change the Entry mode)		
	<A>	<a>	<12>
1	@.-_ /		1
2	ABC	abc	2
3	DEF	def	3
4	GHI	ghi	4
5	JKL	jkl	5
6	MNO	mno	6
7	PQRS	pqrs	7
8	TUV	tuv	8
9	WXYZ	wxyz	9
0	(Not available)		0
#	(space) @ . / - _ ! ? & \$ % # ( ) [ ] { } < > * + = " , ; : ' ^ ` \ ~	(Not available)	

## Changing the Entry Mode

The machine supports three entry modes: <A> for uppercase, <a> for lowercase, and <12> for numbers. Press <A/a/12> or [\*] to change the entry mode.

## Moving the Cursor

Press [◀] or [▶] to move the cursor.

## Entering a Space

Move the cursor to the end of the text, and then press [▶].

## Deleting Characters

Press [C] to delete characters.

Press and hold [C] to delete all characters.



**CANON INC.**

30-2, Shimomaruko 3-chome, Ohta-ku, Tokyo 146-8501, Japan

**CANON MARKETING JAPAN INC.**

16-6, Konan 2-chome, Minato-ku, Tokyo 108-8011, Japan

**CANON U.S.A., INC.**

One Canon Park, Melville, NY 11747, U.S.A.

**CANON EUROPA N.V.**

Bovenkerkerweg 59, 1185 XB Amstelveen, The Netherlands

**CANON CHINA CO. LTD.**

15F Jinbao Building No.89, Jinbao Street, Dongcheng District, Beijing 100005, PRC

**CANON SINGAPORE PTE LTD**

1 HarbourFront Avenue, #04-01 Keppel Bay Tower, Singapore 098632

**CANON AUSTRALIA PTY LTD**

1 Thomas Holt Drive, North Ryde, Sydney NSW 2113, Australia

**CANON GLOBAL WORLDWIDE SITES**

<http://www.canon.com/>

