

FAXPHONE L190

Starter Guide

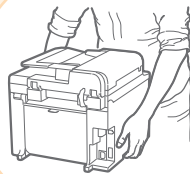
1



Preface

➔ P.2

2



Installing the Machine

➔ P.4

3



Configuring and
Connecting the Fax

➔ P.14

4



Connecting to a Computer
and Installing the Drivers

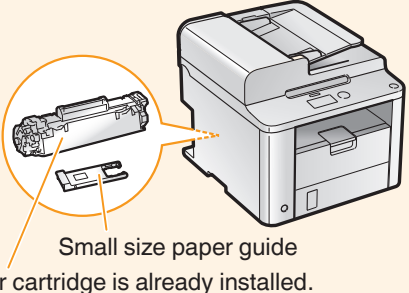
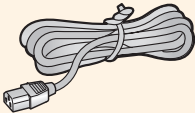

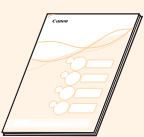
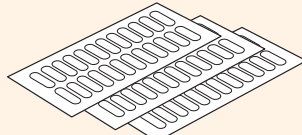


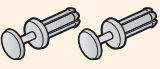
➔ P.18

Read this guide first.

Please read this guide before operating this product. The remarks for important safety instructions are described in the Basic Operation Guide. After you finish reading the Starter Guide, store it in a safe place for future reference.

Checking the Supplied Accessories

Confirm that all the supplied accessories are contained in the box. If an item is missing or damaged, please contact the Canon Authorized Service Facilities or the Canon Customer Care Center.

<p>Machine Unit</p>  <p>Small size paper guide The toner cartridge is already installed.</p>	<p>Power Cord</p> 
<p>Telephone Cable</p> 	<p>User Software CD-ROM</p> 
<p>Starter Guide</p> 	<p>Speed Dial Label</p> 
<p>Basic Operation Guide</p> 	<p>Limited Warranty Notice</p> 
<p>Handset</p> 	<p>Registration Card</p> 
<p>Cradle</p> 	<p>Pin</p> 
	<p>Clamp</p> 

About the USB Cable

The machine does not come with a USB cable. Have a USB cable ready as needed.

Supplied Toner Cartridge

- The included "Canon Cartridge 128 Starter" can print an average yield of 1,000 sheets*. The average yield of the replacement toner cartridge differs from the supplied toner cartridge.
- To purchase replacement toner cartridges:
 - ➔ "Replacement Toner Cartridges" in the e-Manual

* The average yield is based on "ISO/IEC 19752" when printing A4 size paper with the default printing density.

User Software CD-ROM

The User Software CD-ROM contains the FAX L Drivers, Address Book Import/Export Tool, and the e-Manual.*

FAX L Drivers

The FAX L Drivers contain the printer and fax drivers.

Miscellaneous Software

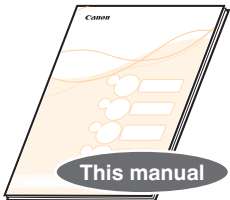
The User Software CD-ROM contains Address Book Import/Export Tool.

The tool is in the [AddressBookTool] folder on the User Software CD-ROM.

* See "Using the e-Manual" (P.24).

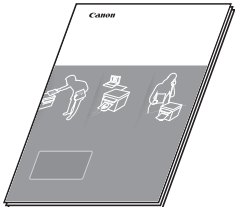
Included Documents

Printed Manuals



Starter Guide

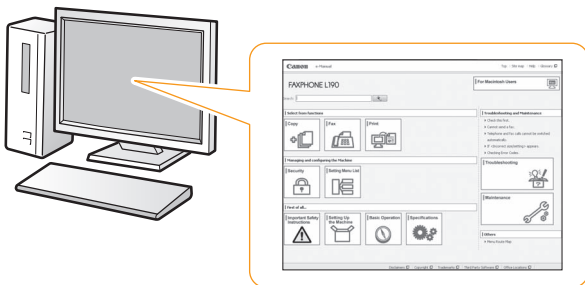
This manual describes the configuration and software installation.



Basic Operation Guide

This manual describes the basic use of the machine.

Manuals Included in the CD-ROM



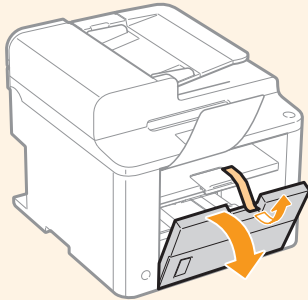
e-Manual

This manual explains all the features of the machine, and is categorized by subject. For details about using the e-Manual, see “Using the e-Manual” (P.24).

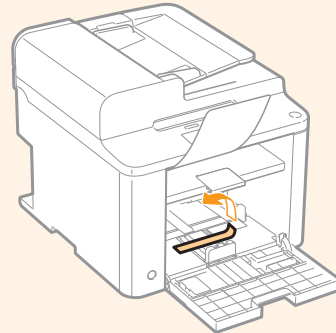
Removing the Packing Materials

Remove all the packing materials, such as orange tape. Packing materials may change in form or placement, or may be added or removed without prior notice.

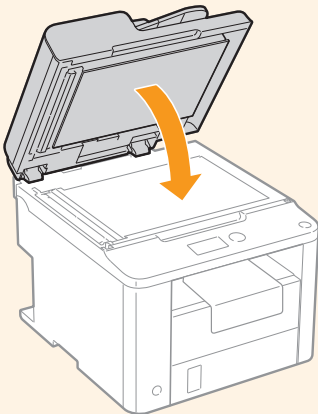
1



2



5

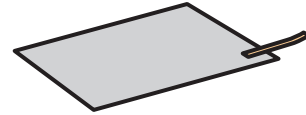


Check!

Are all the packing materials removed?

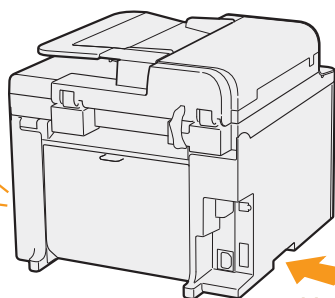
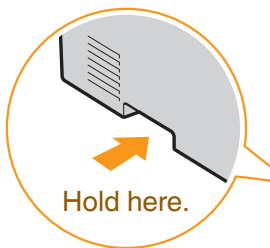


Tape

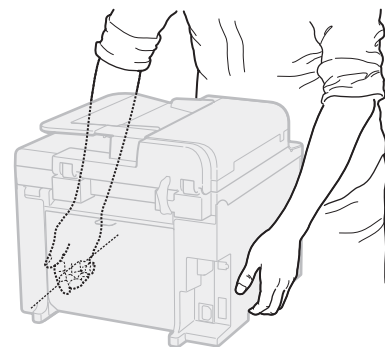


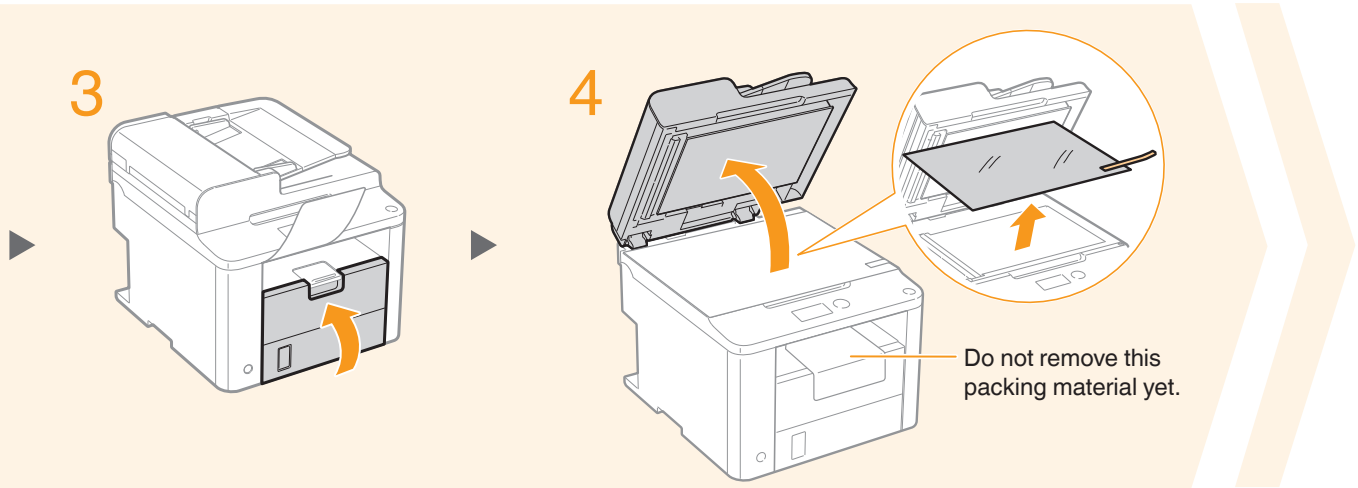
Packing Material
with tape

Proper Handling



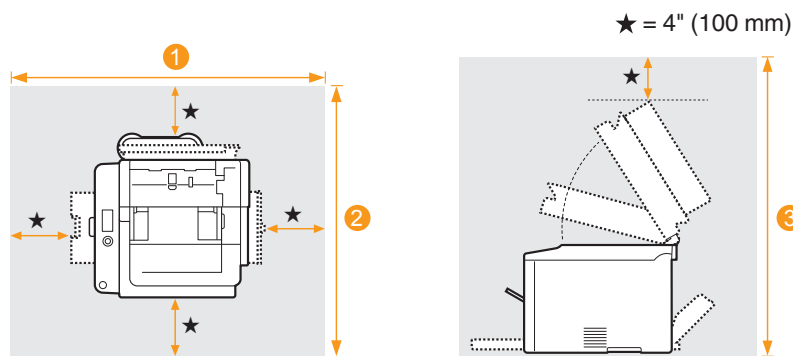
Hold here.





Establishing an Installation Site

- 1 35 5/8" (904 mm)
- 2 26 1/2" (672 mm)
- 3 27 3/4" (706 mm)



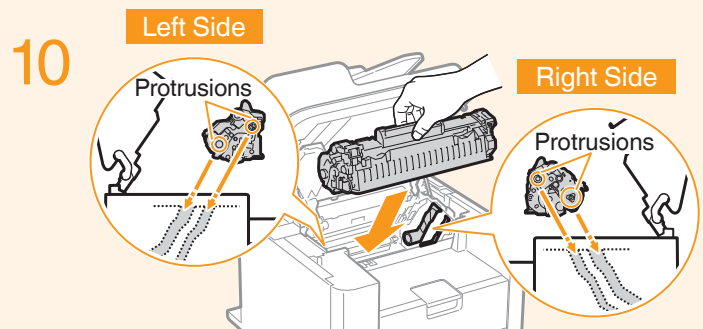
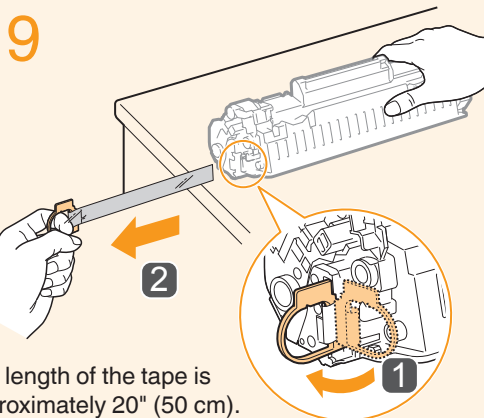
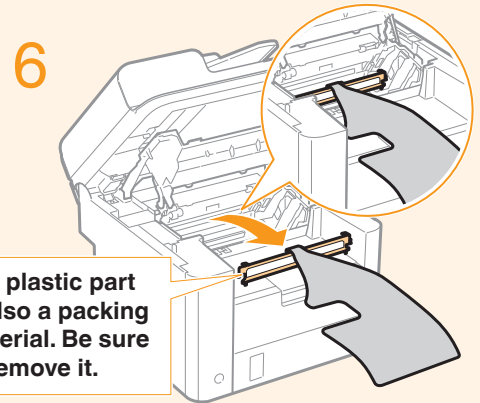
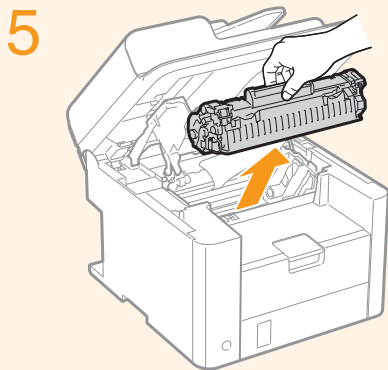
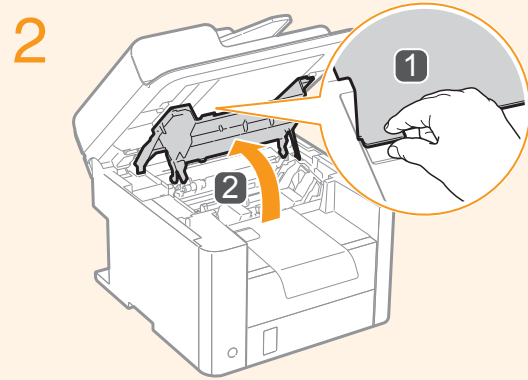
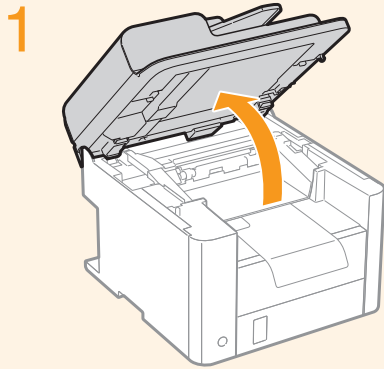
Do not place the machine near the following:

- Alcohol, paint thinner, or other flammable substances ▶ If flammable substances come into contact with electrical parts inside the machine, this may result in a fire or electrical shock.
- Any medical equipment ▶ Radio wave emitted from this machine may interfere with medical equipment.
- Surfaces that are unstable, subject to excessive vibration, objects that could block the ventilation slot, dampness or dust, in direct sunlight or exposed to the elements, subject to high temperatures, open flames, and poor ventilation ▶ Installing the machine in locations with these characteristics may result in personal injury, fire, or electric shock.

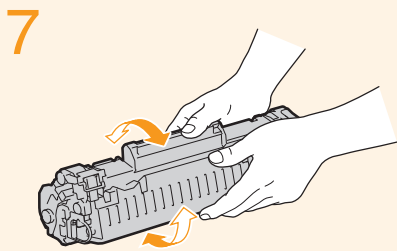
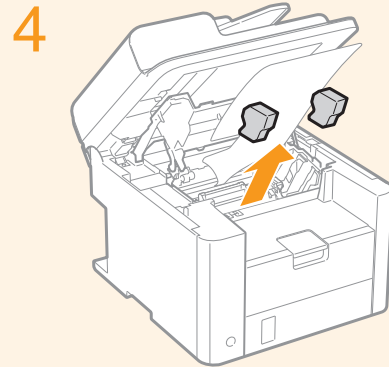
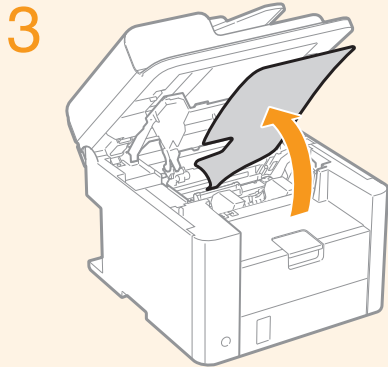
Ozone from the Unit

Although ozone is generated from the machine during operation, it does not have any affect on the human body. However, if you intend to use the machine for long periods of time, ensure that the installation location is well ventilated for a comfortable working environment.

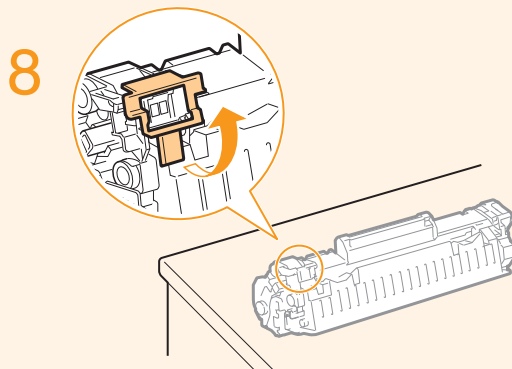
Preparing the Toner Cartridge



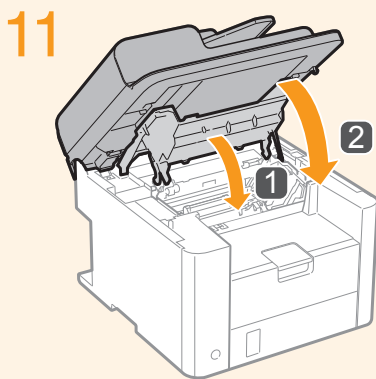
Fit the protrusions on each side of the toner cartridge, and then slide the toner cartridge into the machine.



Shake 5 to 6 times.



Place on a flat surface.

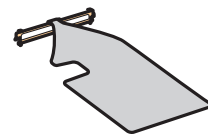


Check!

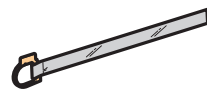
Are all the packing materials removed?



Packing materials

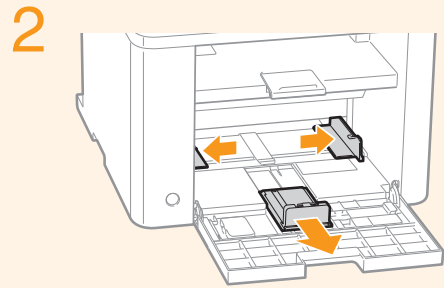
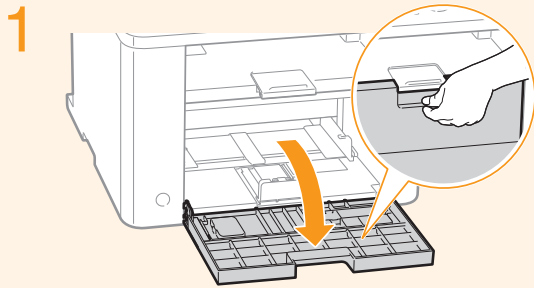


Packing material with a sheet

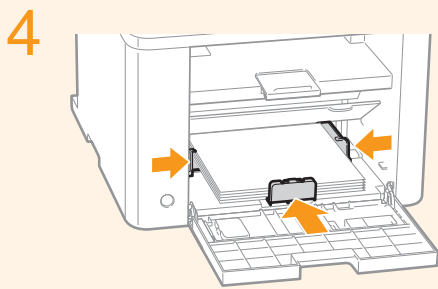


Sealing tape

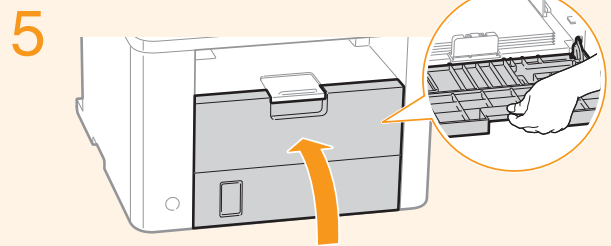
Loading Paper



Spread the paper guides a little wider than the width and length of the paper.



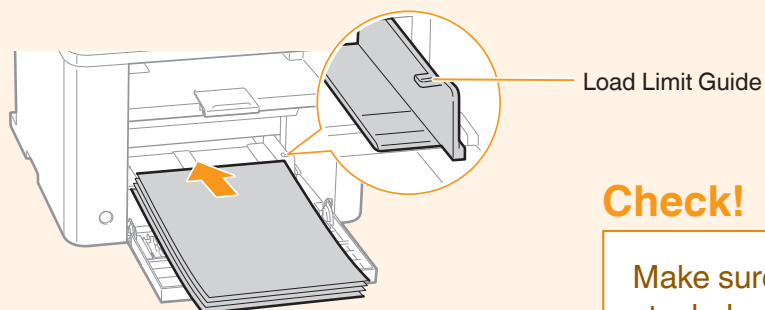
Adjust the paper guides tightly to the width and length of the paper.



Loading Paper Other than Letter Size

The procedure here is for loading Letter size paper. To load paper other than Letter size, such as Legal or Statement, see “Loading Paper Other than Letter Size” (P.22) after finishing the initial settings.

3



Load Limit Guide

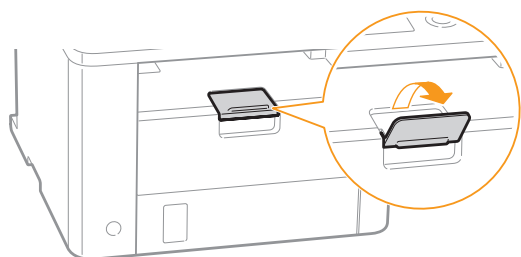
Push until the edge of the paper stack meets the back of the paper cassette.

Check!

Make sure that the paper stack does not exceed the load limit guide.

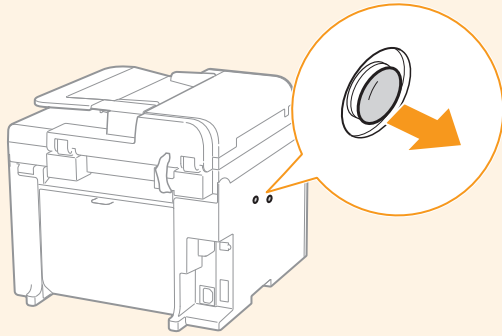
Use the paper stopper when printing.

Lift the paper stopper to prevent the paper from falling out of the output tray.

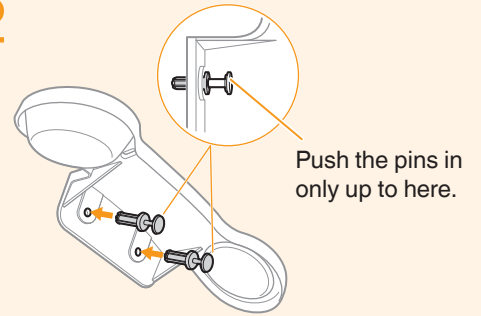


Connecting the Handset

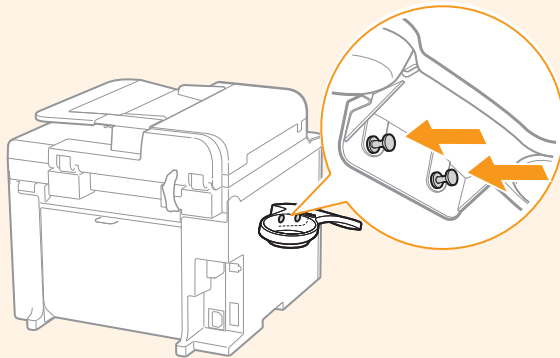
1



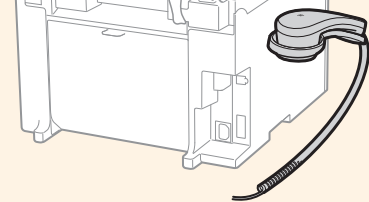
2



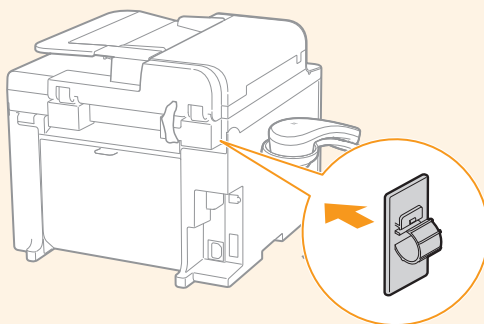
4



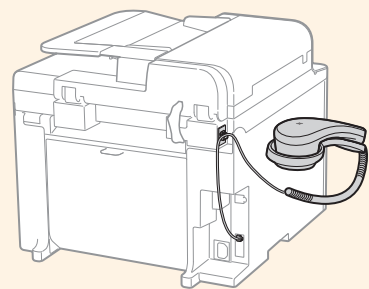
5



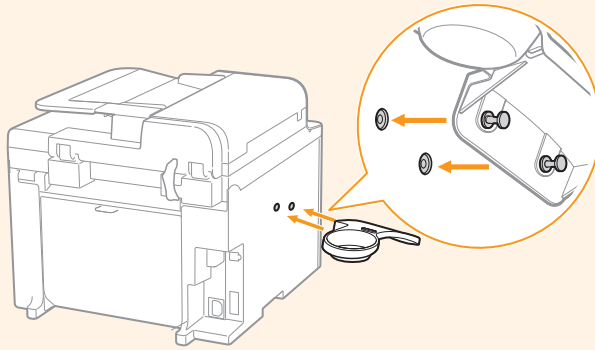
7



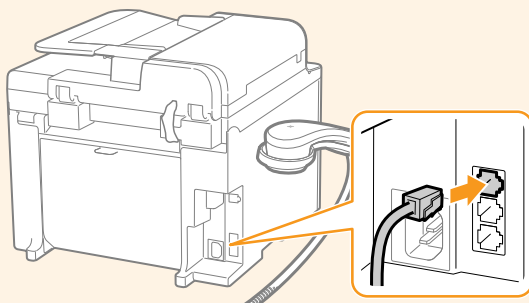
8



3

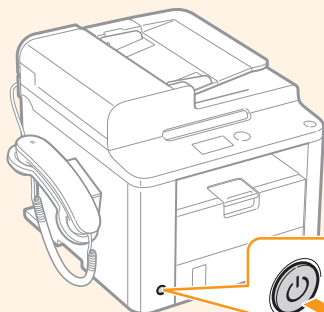


6



Connecting the Power Cord

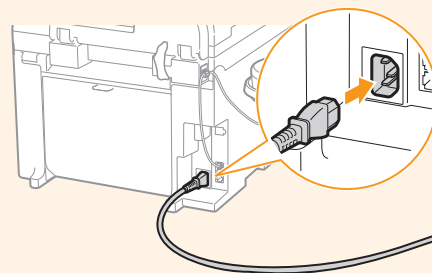
1



Make sure that the machine is turned OFF.

Do not connect the USB cable.
Connect the cable when installing the software.

2

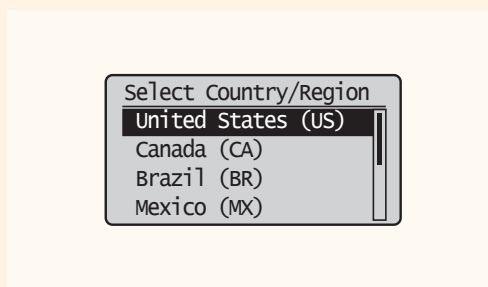


4 Press [▲] or [▼] to highlight a language, and then press [OK].



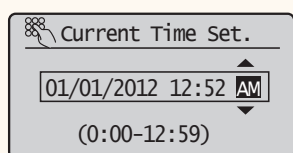
OK

5 Press [▲] or [▼] to highlight a region, and then press [OK].



OK

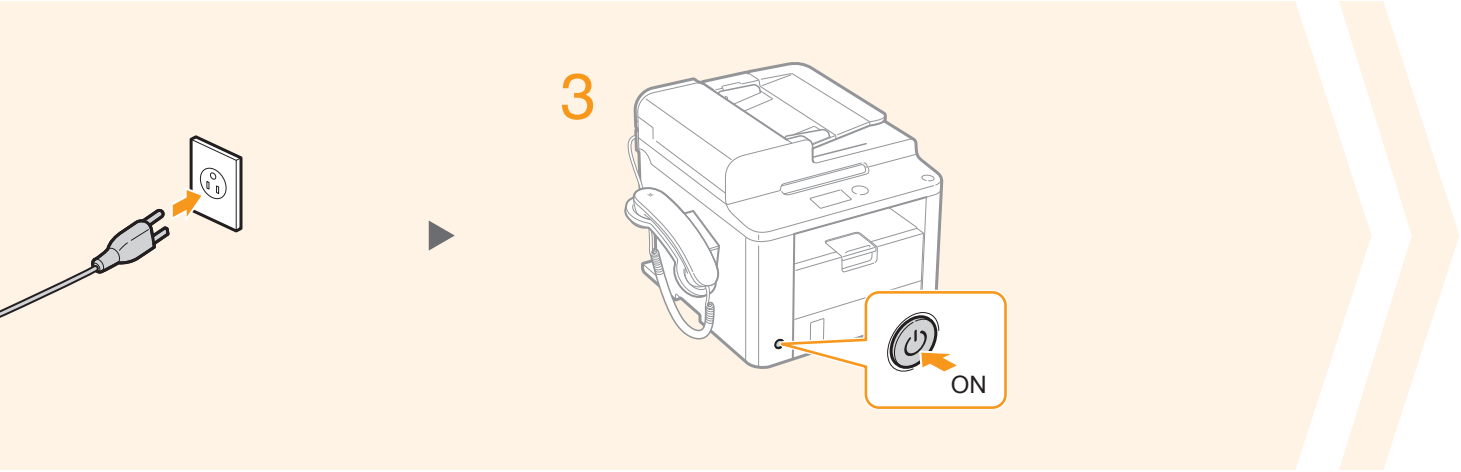
7 Enter the date and time, and then press [OK].



- Press [◀] or [▶] to move the cursor to the left and right.
- Press [▲] or [▼] to change the numeric value, or AM/PM.

※ The factory default settings for time display is set as 12-Hour.

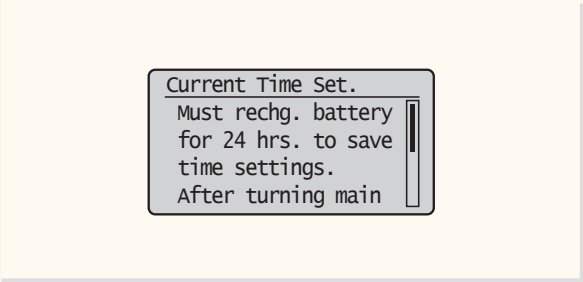
OK



6 Press [OK].

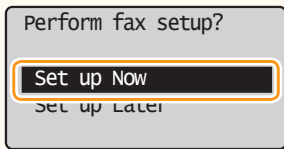


8 Press [OK] to proceed to the initial fax settings.



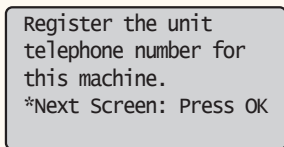
Configuring the Fax

Set Up 1 Register the Fax Number and Unit Name

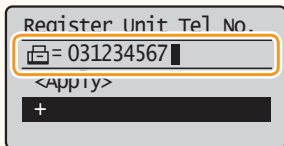


- If you select <Set up Later>, the receive mode will be set to <Auto>.
- To reconfigure the settings, select [Menu] → <Fax TX Settings> → <Fax Setup Guide>.

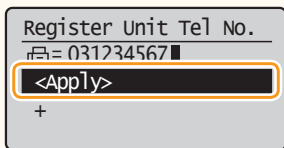
OK



OK

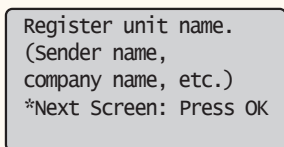


- Enter the telephone number using the numeric keys.

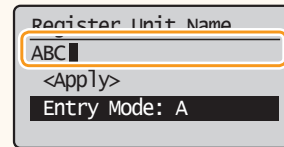


- Press [▲] or [▼] to highlight <Apply>, and then press [OK].

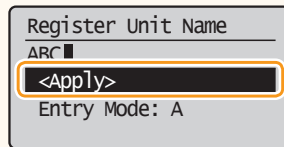
OK



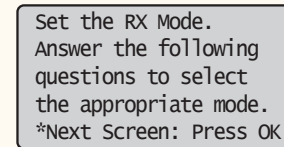
OK



- By referring to "Entering Text" (P.27), enter the unit name.



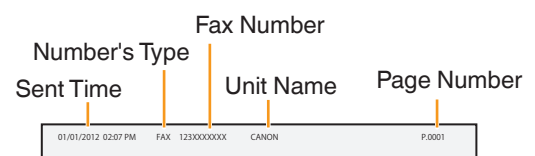
- Press [▲] or [▼] to highlight <Apply>, and then press [OK].



- Do not operate the machine when this screen appears and proceed to the next page.

Registered information will be printed on the recipient's paper.

The fax number and unit name registered here will be printed on the recipient's paper as the sender information.



Check! Receive Mode That Fits Your Purpose

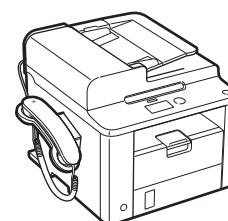
Choose a receive mode that meets your purpose from the following receive modes. The receive mode will be used to configure the setting in “Selecting the Fax Receive Mode” (P.16).

Fax

Use for Fax Only/No Voice Calls

You can use only for fax and may not use for voice calls. You do not need to connect the external telephone or the optional handset.

Receive Mode ⇒ Auto



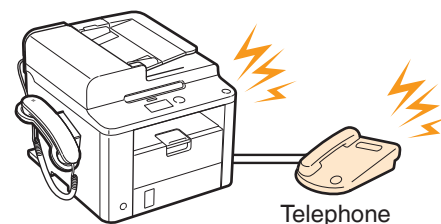
Phone

Mainly Use for Voice Calls/Almost Not Use for Fax

Connect the handset* to receive calls. Press [] (FAX/COPY), select <Start Receiving>, and then hang up the handset to receive faxes.

* You can also use an external telephone.

Receive Mode ⇒ Manual



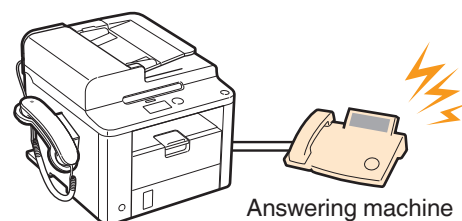
Phone Fax

Use for Fax and Voice Call

1 Using an answering machine

Connect an external answering machine to record voice messages when you are out, as well as receive calls. Faxes will be automatically received.

Receive Mode ⇒ Answering Machine

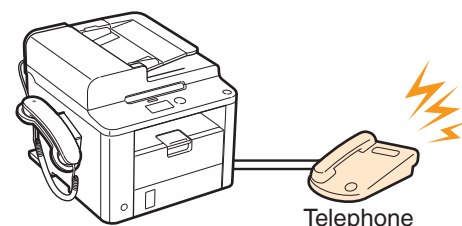


2 Using a general telephone

Connect the handset*. Faxes will be automatically received and the machine will ring when voice calls come in.

* You can also use an external telephone.

Receive Mode ⇒ Fax/Tel Auto Switch



Configuring the Fax

Set Up 2 Selecting the Fax Receive Mode

Set the receive mode that you confirmed in "Receive Mode That Fits Your Purpose" (P.15).

Set the RX Mode.
Answer the following questions to select the appropriate mode.
*Next Screen: Press OK

OK ▼

Do you want to use this machine for fax only (no telephone)?

Yes
No

- To set to Auto mode → <Yes>
- To set to other receive modes → <No>

No ▼

Do you want to auto-receive faxes and answer phone manually?

Yes
No

- To set to Fax/Tel Auto Switch mode → <Yes>
- To set to other receive modes → <No>

No ▼

Do you want to use an answering machine to answer the phone?

Yes
No

- To set to Answering Machine mode → <Yes>
- To set to Manual mode → <No>

<Auto>

Yes



<Fax/Tel>

Yes



<Answer>

Yes



<Manual>

No

RX Mode Settings
RX Mode: (XXXXXX) < Check!

*Reset: Press Back
*Apply: Press OK

OK ▼

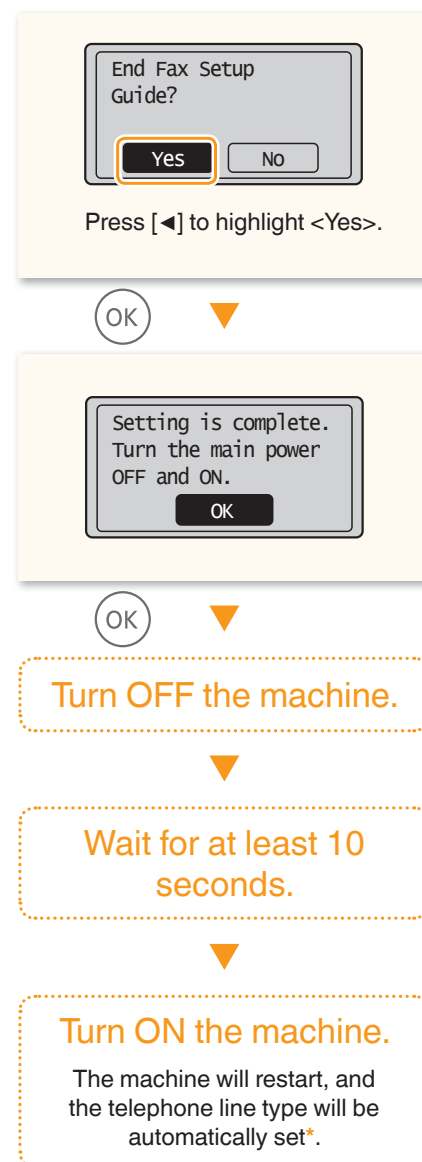
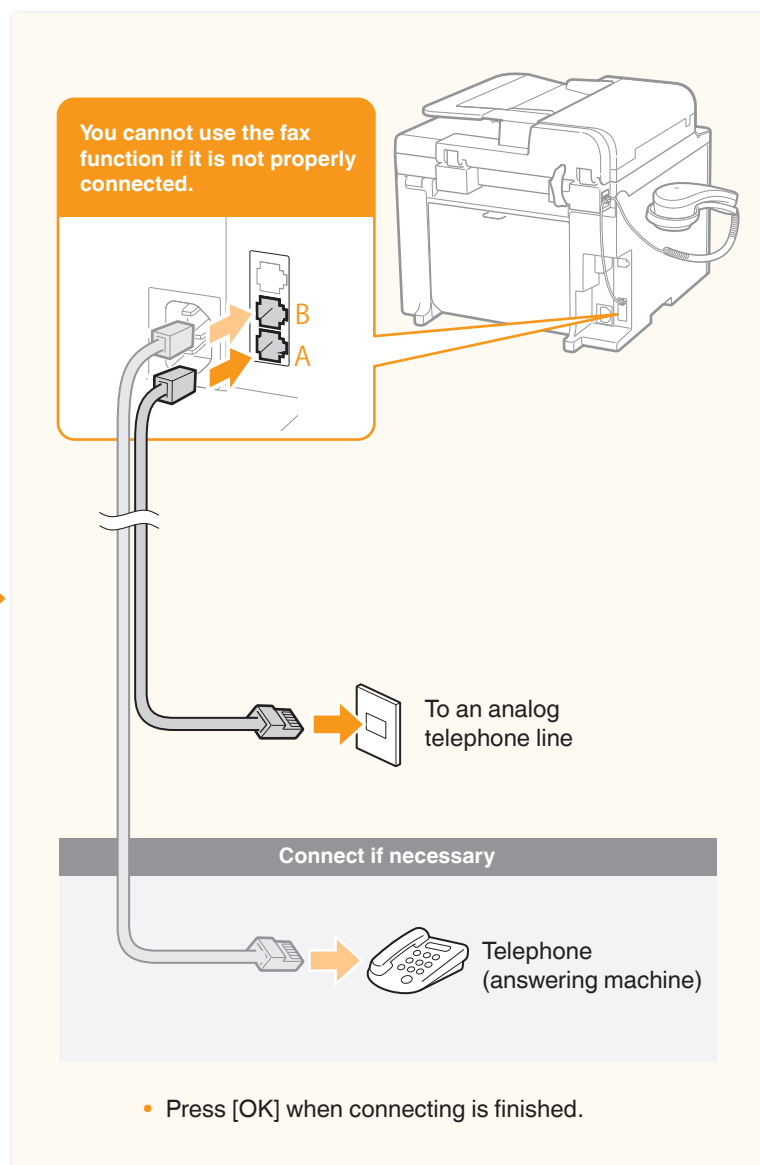
Connect phone line.
Follow illustrations on the next screen:
Connect line to A.
*Next : Press OK

Connect phone line
#under trans
*Next: Press OK

The screen that appears varies depending on the receive mode selected.

When connecting a telephone with fax functions:
Set the fax receive mode of the telephone to "manual."

Set Up 3 Connecting the Telephone Line



* If the telephone line type is not automatically set:

See the Basic Operation Guide to set manually.

➡ “Fax” → “Change the Fax Settings” → “Changing Fax Sending Settings” in the Basic Operation Guide

Connecting to the Computer

1

USB Connection

Install the software. Windows



Install the FAX L Drivers. Make sure that the machine is turned ON, and log on to Windows as a user with administrative privileges. Shut down all applications that are running. See the e-Manual for details about installation.

Do not connect the USB cable yet.

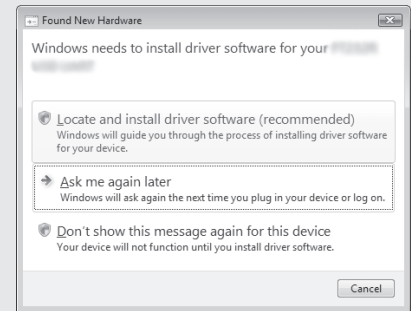
Connect the USB cable after installing the FAX L Drivers.

If you already connected the USB cable:

Windows 7: ① Disconnect the USB cable from the computer, ② and then proceed to step ①.

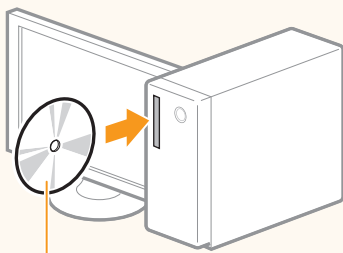
Windows Vista/XP: ① If the dialog box on the right appears, disconnect the USB cable from the computer*, ② click [Cancel], ③ and then proceed to step ①.

* If the USB cable is disconnected and the dialog box disappears, proceed to step ①.



For Windows Vista/XP

1



User Software CD-ROM

2



- Printer and fax drivers.
- Select [Custom Installation] to install and the e-Manual.

If the screen is not correctly displayed:

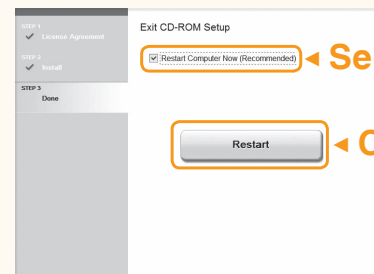
- Windows XP
[Start] Menu → [Run] → enter [D:\MInst.exe*]
→ [OK]

- Windows Vista/7
[Start] Menu → [Search programs and files]
(or [Start Search]) → enter [D:\MInst.exe*] →
press the [Enter] key

* The CD-ROM drive name is indicated as "D:" in this manual.

Follow the instructions on the screen to continue.

3



- Remove the CD-ROM, if necessary.

➡ Proceed to P.19

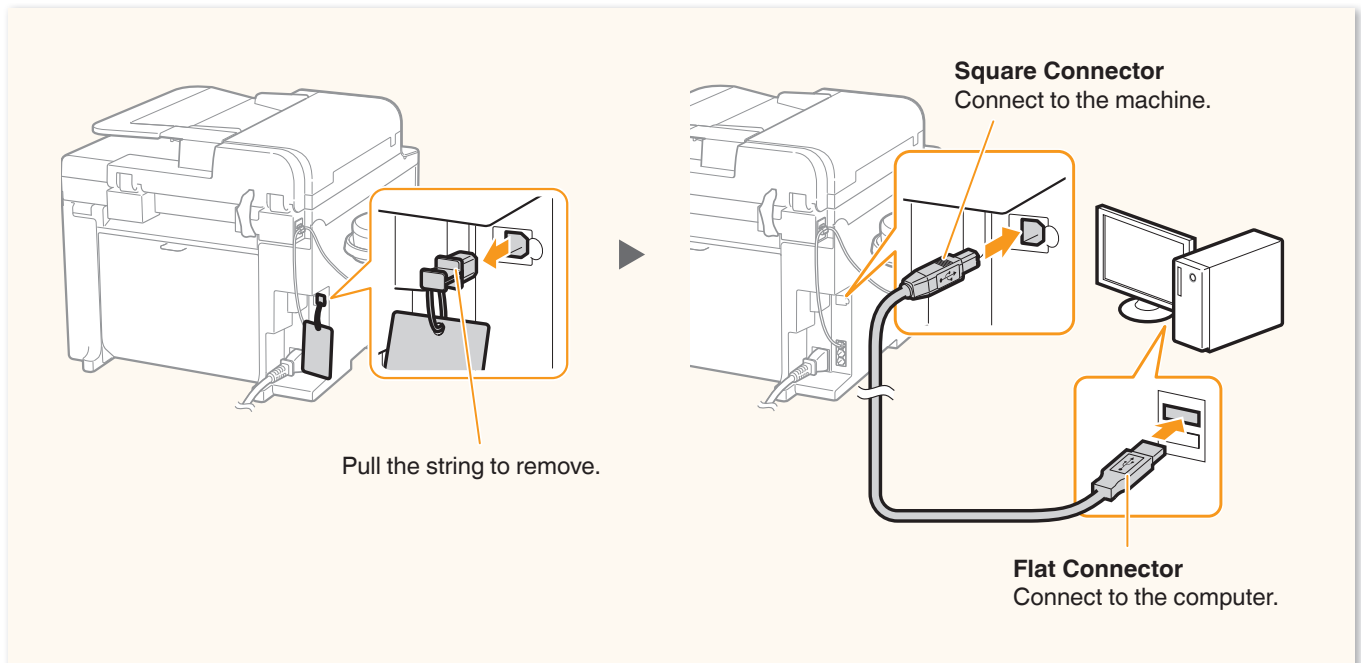
2

USB Connection

Connect the USB cable. Windows



After installing the software, such as FAX L Drivers, connect the USB cable. Make sure the software is installed first.



Computer connection via the USB is now complete.

Connecting to the Computer

1

USB Connection

Install the software. **Macintosh**



Install the MF drivers for Macintosh. It requires Mac OS X 10.5.8 version or later. The installation screen varies depending on the version of Mac OS X.

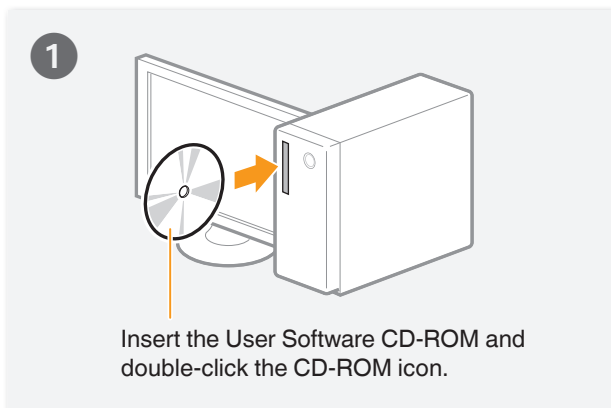
This operation is for Macintosh. If using Windows, proceed to P.18

Do not connect the USB cable yet.

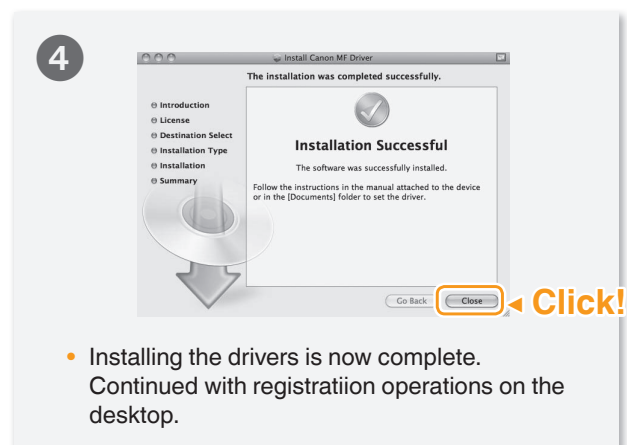
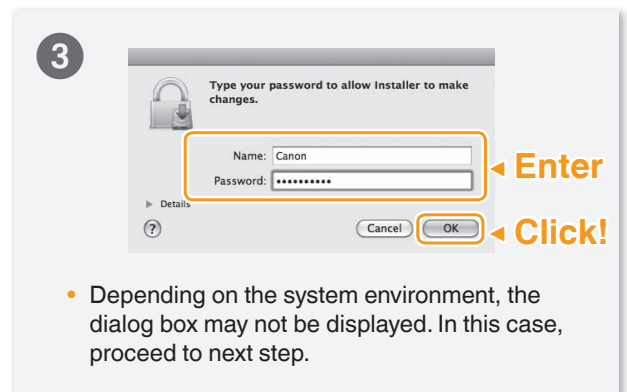
Connect the USB cable after installing the MF Drivers and the MF Toolbox.

If you already connected the USB cable:

① Disconnect the USB cable from the computer, ② and then proceed to step ①.



Follow the instructions on the screen to continue.

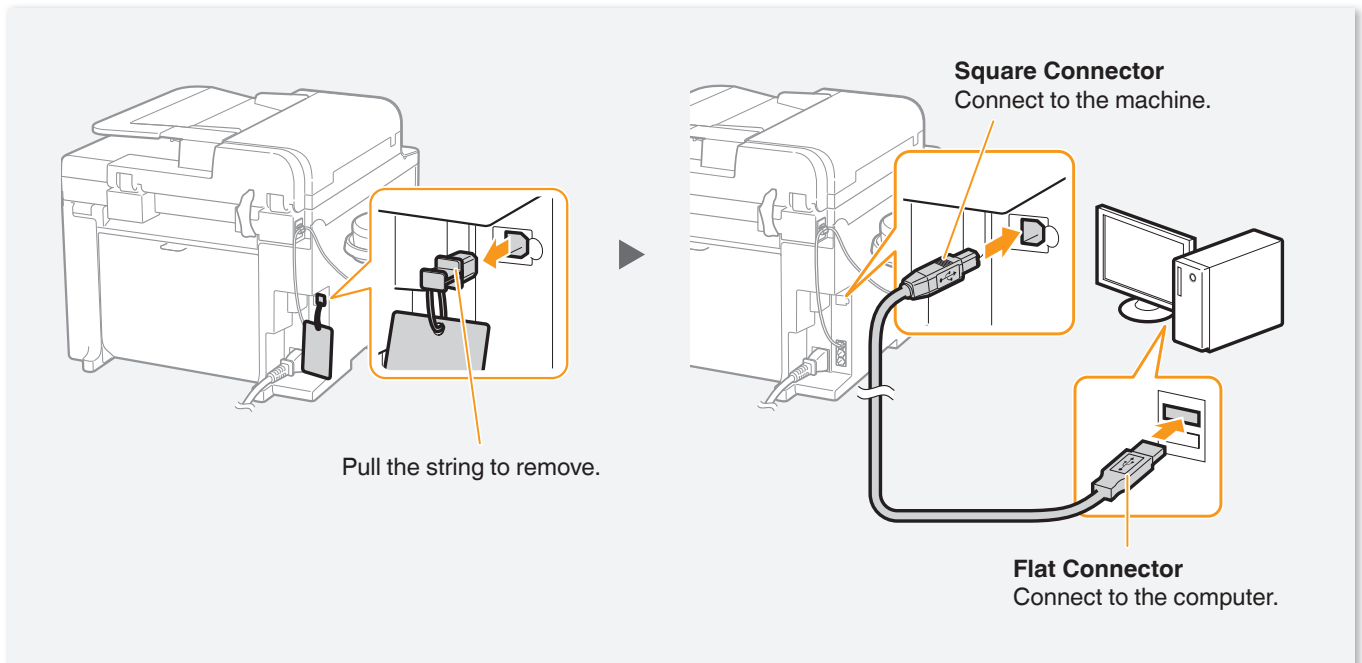


2

USB Connection

Connect the USB cable. **Macintosh**

After installing the software, such as MF Driver, connect the USB cable. Make sure the software is installed first.



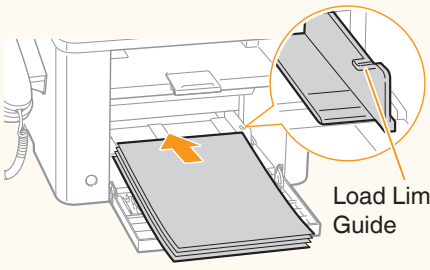
Computer connection via the USB is now complete.

Appendix

Loading Paper Other than Letter Size

To load paper other than Letter size, such as Legal, see “Loading Paper” (P.8) and the following procedure after finishing the initial settings.

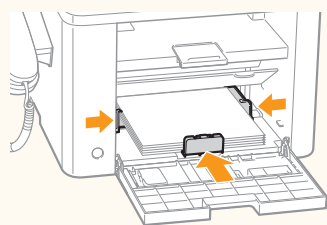
1



Load Limit Guide

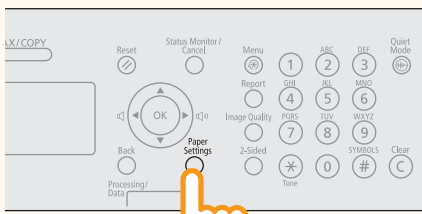
- Load the paper into the paper cassette.
- Make sure that the paper stack does not exceed the load limit guides.

2



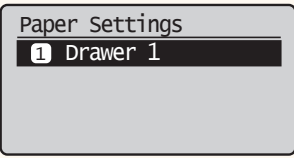
- Adjust the paper guides tightly to the width and length of the paper.

3



Paper Settings

4

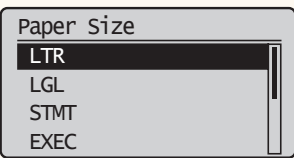


Paper Settings
1 Drawer 1

- Press [▲] or [▼] to highlight the paper cassette to load paper, and then press [OK].

OK

5

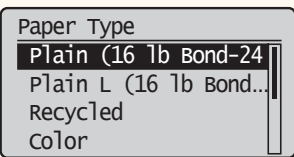


Paper Size
LTR
LGL
STMT
EXEC

- Press [▲] or [▼] to highlight a paper size, and then press [OK].

OK

6

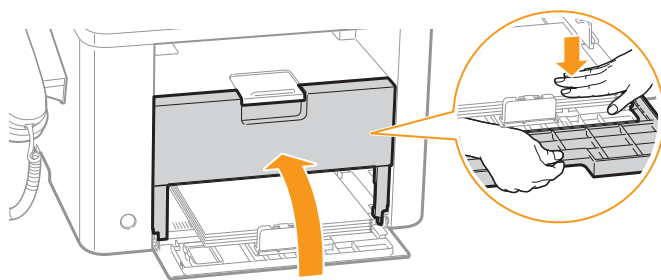


Paper Type
Plain (16 lb Bond-24
Plain L (16 lb Bond...
Recycled
color

- Press [▲] or [▼] to highlight a paper type, and then press [OK].

Loading Paper that Is Longer than the Length of the Paper Cassette

Push the lower front cover and lift the front cover gently.



Loading Small Size Paper

Use the small size paper guide to load small size paper.

➔ “Loading Small Size Paper” in the Basic Operation Guide

Loading Envelopes or Paper with a Letterhead

➔ “Loading Envelopes or Paper with a Letterhead” in the Basic Operation Guide

Using the e-Manual

The e-Manual is an electronic manual document that is displayed on the computer. All features of the machine are categorized by subject, and you can quickly view the information you need by using its search function. Use the e-Manual as a reference.

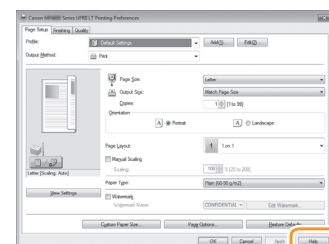
The screenshot shows the Canon e-Manual interface for the FAXPHONE L190. The interface includes a search bar at the top, a navigation menu on the left, and a main content area on the right. Annotations with arrows point to various elements:

- Search Bar:** "Enter a keyword that you want to search to quickly find the information."
- Top Navigation:** "Click to refer to the contents, glossary, and how to use the e-Manual." (points to Top, Site map, Help, Glossary)
- Macintosh Users:** "Click to view precautions when using Macintosh." (points to For Macintosh Users)
- Main Content Area:** "Click a button to access the information that you want." (points to the 'Select from functions' section containing Copy, Fax, Print, Security, and Setting Menu List)
- Troubleshooting and Maintenance:** "Click when performing troubleshooting or maintenance of the machine." (points to the Troubleshooting and Maintenance section)

Using the Online Help

Information, such as driver software information, is included in the online help. When using the driver software, you can immediately view the description of the features and the contents of the settings.

- 1 Select [File] → [Print] from the menu bar of an application.
- 2 Select the printer in [Select Printer] or [Name] in the [Print] dialog box.
- 3 Click [Preferences] or [Properties].
- 4 Click [Help].



Windows

Installing in a Windows Environment

- 1 Insert the User Software CD-ROM in your computer.
- 2 Click [Custom Installation]*.
- 3 Select only the [Manuals] check box.
- 4 Click [Install].
- 5 Click [Yes].
- 6 Click [Next].
- 7 Click [Exit] to finish the installation.

* If the CD-ROM setup screen does not appear:

- Windows XP
[Start] Menu → [Run] → enter [D:\MInst.exe**] → [OK]
- Windows Vista/7
[Start] Menu → [Search programs and files]
(or [Start Search]) → enter [D:\MInst.exe**] →
press the [ENTER] key


** The CD-ROM drive name is indicated as "D:" in this manual.

Displaying the e-Manual



Double-click the shortcut icon [FAXPHONE L190 e-Manual] on the desktop.

Displaying the e-Manual from the CD-ROM

Insert the User Software CD-ROM in your computer, click [Display Manuals], and then click  for [e-Manual].

※ Depending on the operating system, a message will be displayed for security protection to display the content.

Macintosh

Installing in a Macintosh Environment

- 1 Insert the User Software CD-ROM in your computer.
- 2 Open the [Documents] folder.
- 3 Drag and drop the [MF Guide] folder into a location where you want to save it.
- 4 When displaying the installed e-Manual, double-click [index.html] in the saved [MF Guide] folder.

Displaying the e-Manual from the CD-ROM

Double-click [index.html] in the saved [MF Guide] folder.

For Details About the Fax and Print Functions

- Canon MF Printer Driver Installation Guide
User Software CD-ROM → [Documents] → [Print] → [Guide] → [index.html]
- Canon Fax Driver Installation Guide
User Software CD-ROM → [Documents] → [FAX] → [Guide] → [index.html]

Disclaimers

The information in this document is subject to change without notice. CANON INC. MAKES NO WARRANTY OF ANY KIND WITH REGARD TO THIS MATERIAL, EITHER EXPRESS OR IMPLIED, EXCEPT AS PROVIDED HEREIN, INCLUDING WITHOUT LIMITATION, THEREOF, WARRANTIES AS TO MARKETABILITY, MERCHANTABILITY, FITNESS FOR A PARTICULAR PURPOSE OF USE OR NON-INFRINGEMENT. CANON INC. SHALL NOT BE LIABLE FOR ANY DIRECT, INCIDENTAL, OR CONSEQUENTIAL DAMAGES OF ANY NATURE, OR LOSSES OR EXPENSES RESULTING FROM THE USE OF THIS MATERIAL.

Trademarks

Canon, the Canon logo, and FAXPHONE are registered trademarks of Canon Inc. in the United States and may also be trademarks or registered trademarks in other countries.

Apple, Mac OS, and Macintosh are trademarks or registered trademarks of Apple Inc. in the U.S. and/or other countries. Microsoft, Windows and Windows Vista are either registered trademarks or trademarks of Microsoft Corporation in the United States and/or other countries. All other product and brand names are registered trademarks, trademarks or service marks of their respective owners.

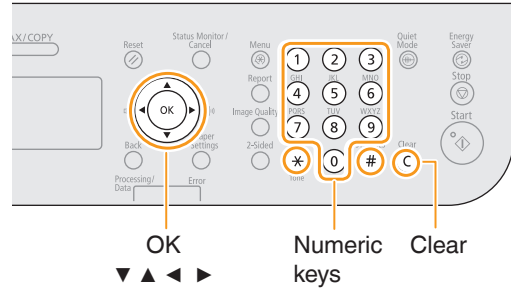
Copyright

© CANON INC. 2012 All Rights Reserved

No part of this publication may be reproduced, transmitted, transcribed, stored in a retrieval system, or translated into any language or computer language in any form or by any means, electronic, mechanical, magnetic, optical, chemical, manual, or otherwise, without the prior written permission of Canon Inc.

Entering Text

During the setup or initial configuration, you may need to enter letters and numbers. Use [▲], [▼], [◀], [▶], numeric keys, and [OK] to enter text.



Numeric Key	Entry Mode (See below on how to change the Entry mode)		
	<A>	<a>	<12>
1	@._-/_		1
2	ABC	abc	2
3	DEF	def	3
4	GHI	ghi	4
5	JKL	jkl	5
6	MNO	mno	6
7	PQRS	pqrs	7
8	TUV	tuv	8
9	WXYZ	wxyz	9
0	(Not available)		0
#	- . * # ! " , ; : ^ ` _ = / ' ? \$ @ % & + \ () [] { } < >		(Not available)

Changing the Entry Mode

The machine supports three entry modes: <A> for uppercase, <a> for lowercase, and <12> for numbers. The default setting is <A>. Press [▼] to highlight <Entry Mode: A>, and then press (*) (Tone) to switch between the entry modes.

Moving the Cursor

Press [◀] or [▶] to move the cursor.

Entering a Space

Move the cursor to the end of the text, and then press [▶].

Deleting Characters

Press (C) (Clear) to delete characters.
Press and hold to delete all characters.

Contacting the Service Center

When you have a problem with your machine, refer to "Troubleshooting" in the Basic Operation Guide or the e-Manual first. If you cannot solve the problem after referring the manuals, contact the Canon Authorized Service Facilities or the Canon Customer Care Center.

Canon Customer Care Center

1-800-OK-CANON

(U.S.A./Canada)

U.S.A

Monday through Friday

From 8:00 A.M. to 8:00 P.M. EST

Canada

Monday through Friday

From 9:00 A.M. to 8:00 P.M. EST

<http://www.canon.ca/>

Canon

CANON INC.

30-2, Shimomaruko 3-chome, Ohta-ku, Tokyo 146-8501, Japan

CANON MARKETING JAPAN INC.

16-6, Konan 2-chome, Minato-ku, Tokyo 108-8011, Japan

CANON U.S.A., INC.

One Canon Plaza, Lake Success, NY 11042, U.S.A.

CANON EUROPE N.V.

Bovenkerkerweg, 59-61, 1185 XB Amstelveen, The Netherlands

CANON CHINA CO. LTD.

15F Jinbao Building No.89, Jinbao Street, Dongcheng District, Beijing 100005, PRC

CANON SINGAPORE PTE LTD

1 HarbourFront Avenue, #04-01 Keppel Bay Tower, Singapore 098632

CANON AUSTRALIA PTY LTD

1 Thomas Holt Drive, North Ryde, Sydney NSW 2113, Australia

CANON GLOBAL WORLDWIDE SITES

<http://www.canon.com/>



FT6-0303 (000)

XXXXXXXXXX

© CANON INC. 2012

PRINTED IN KOREA



F T 6 - 0 3 0 3 - 0 0 0