



# Setting Up Your MX452 In Default Mode (Tel Priority Mode) Without An Answering Machine DSL/Cable Modem Connection



# Fax Easy Setup

Click [Next](#) to step through this image-friendly version of **Fax Easy Setup**.

---

If you started **Fax Easy Setup**, on the fax machine's operation panel, and prefer to go through this image-friendly version...

## Step 1

Press the FAX button at any screen to go to fax standby mode.

---



## Step 2

Click [Next](#) to proceed through the setup.

---



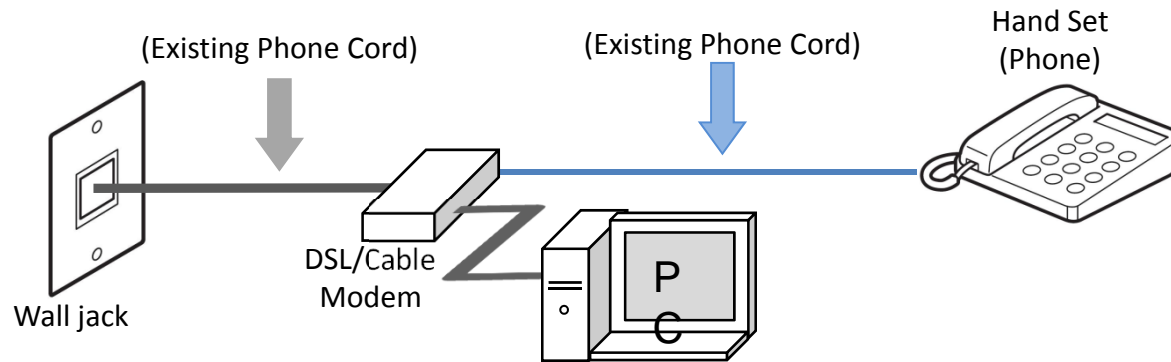


# Connecting The Phone Lines

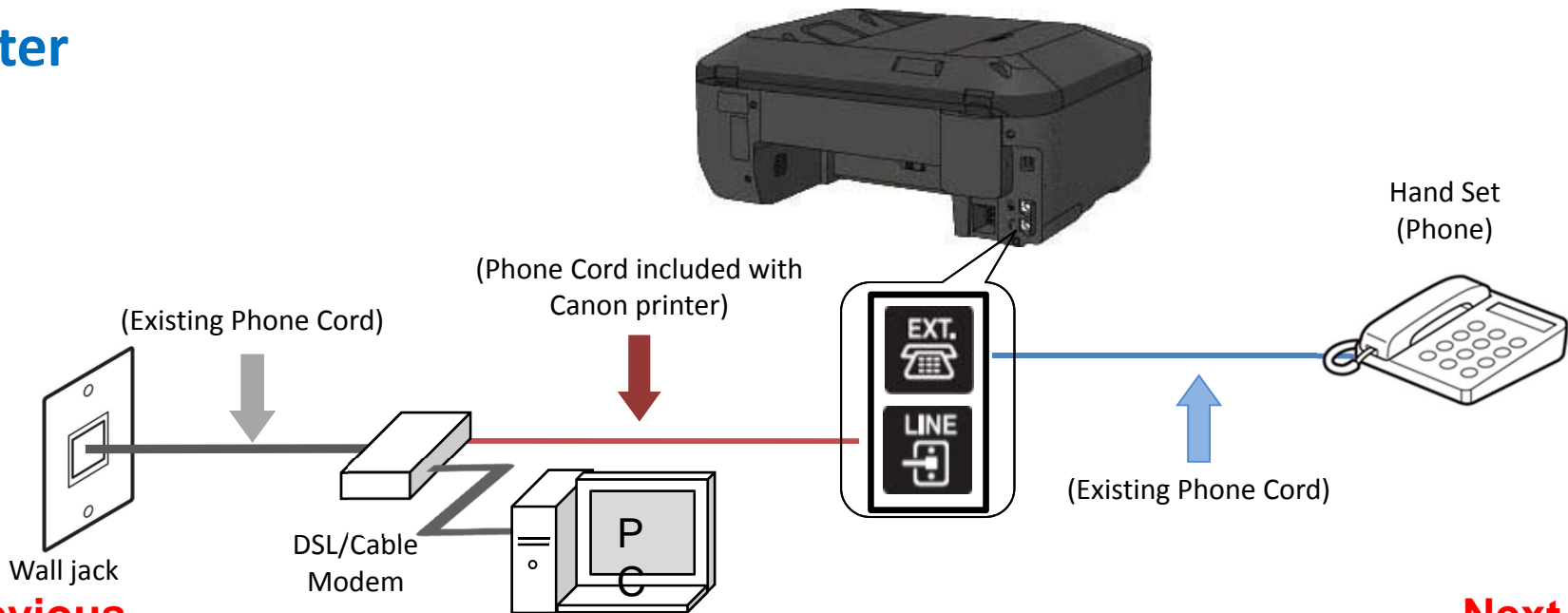


# Fax to Phone Line Connection

## Before

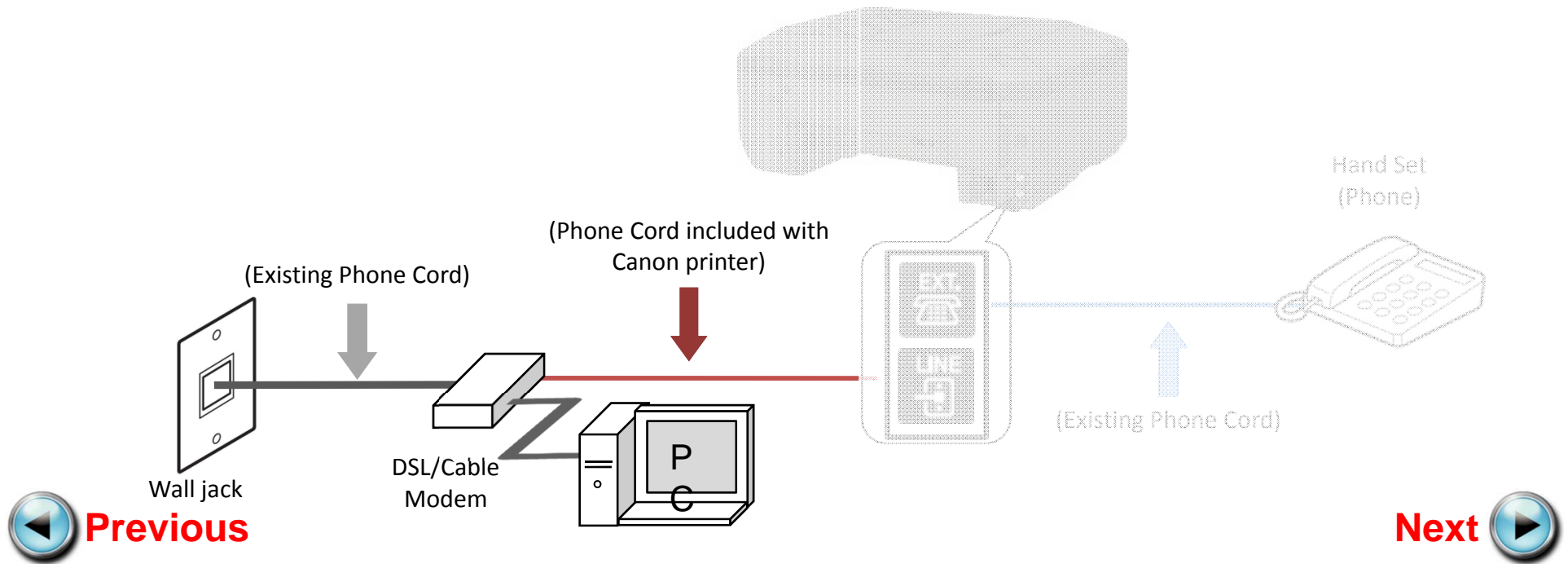


## After



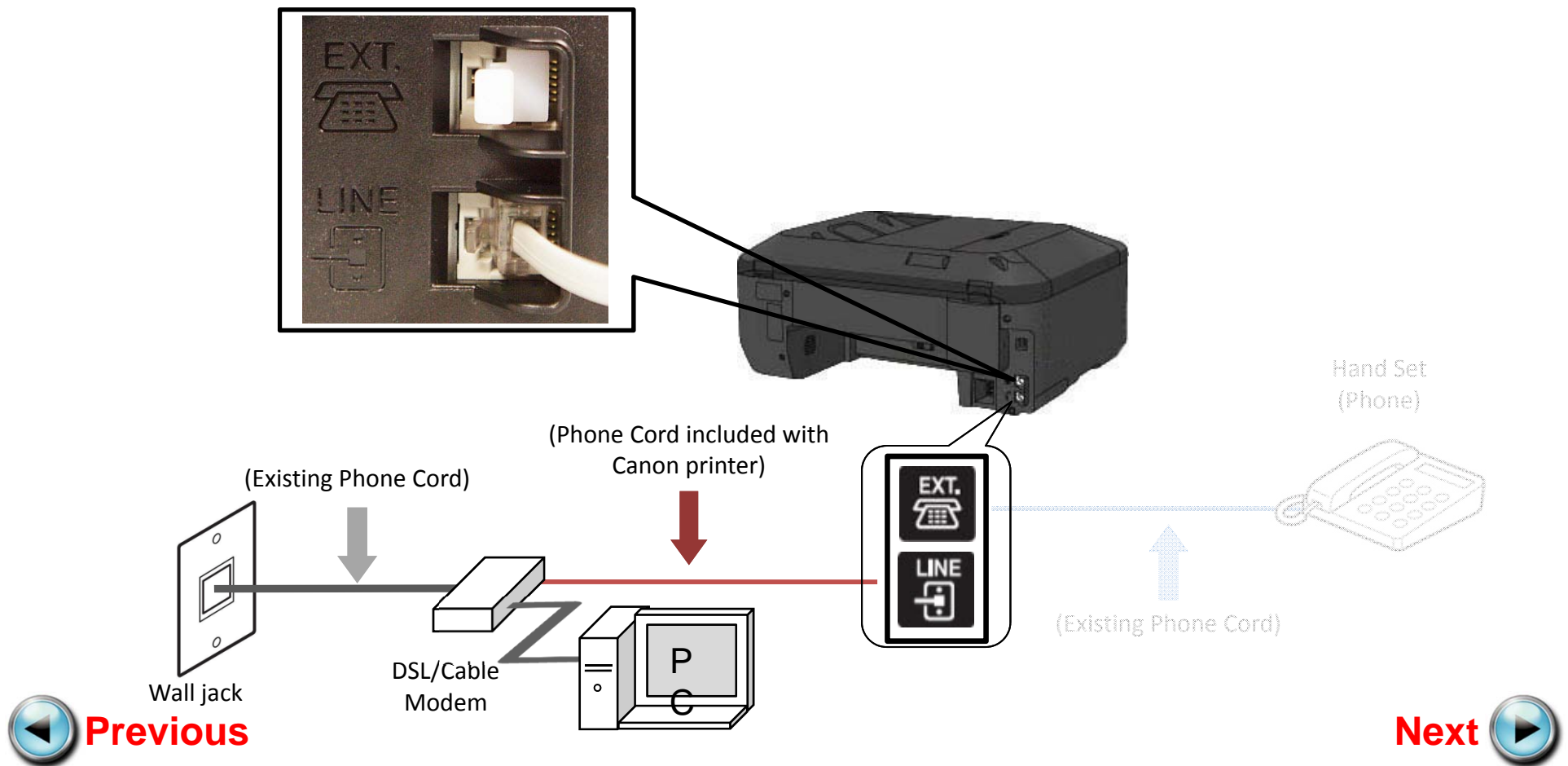
# Fax to Phone Line Connection

- Plug the provided phone cord into the DSL/Cable Modem.



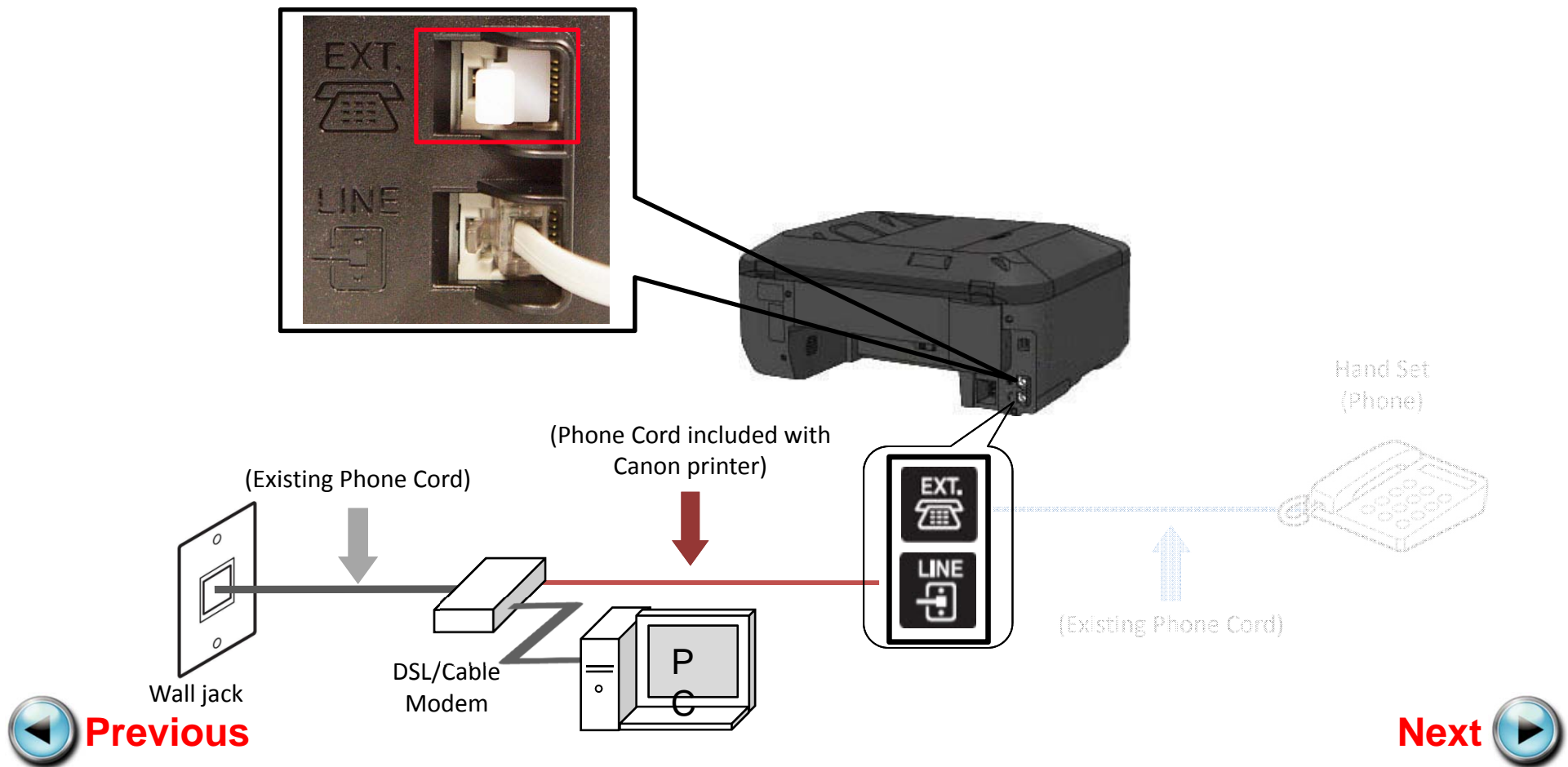
# Fax to Phone Line Connection

- Plug the provided phone cord into the “LINE” jack on the rear of the multifunction.



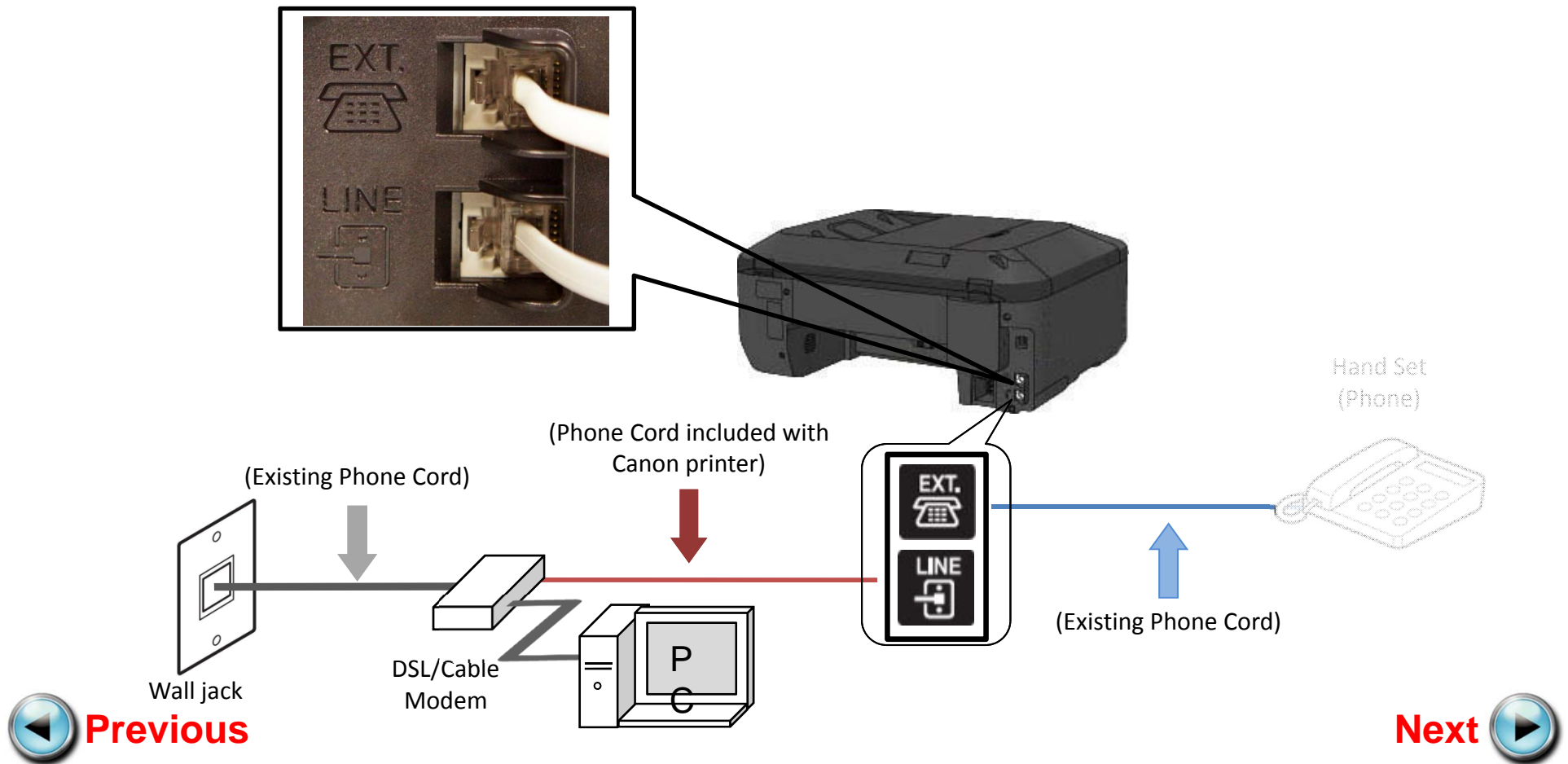
# Fax to Phone Line Connection

- Remove the white plug from the upper jack labeled "EXT."



# Fax to Phone Line Connection

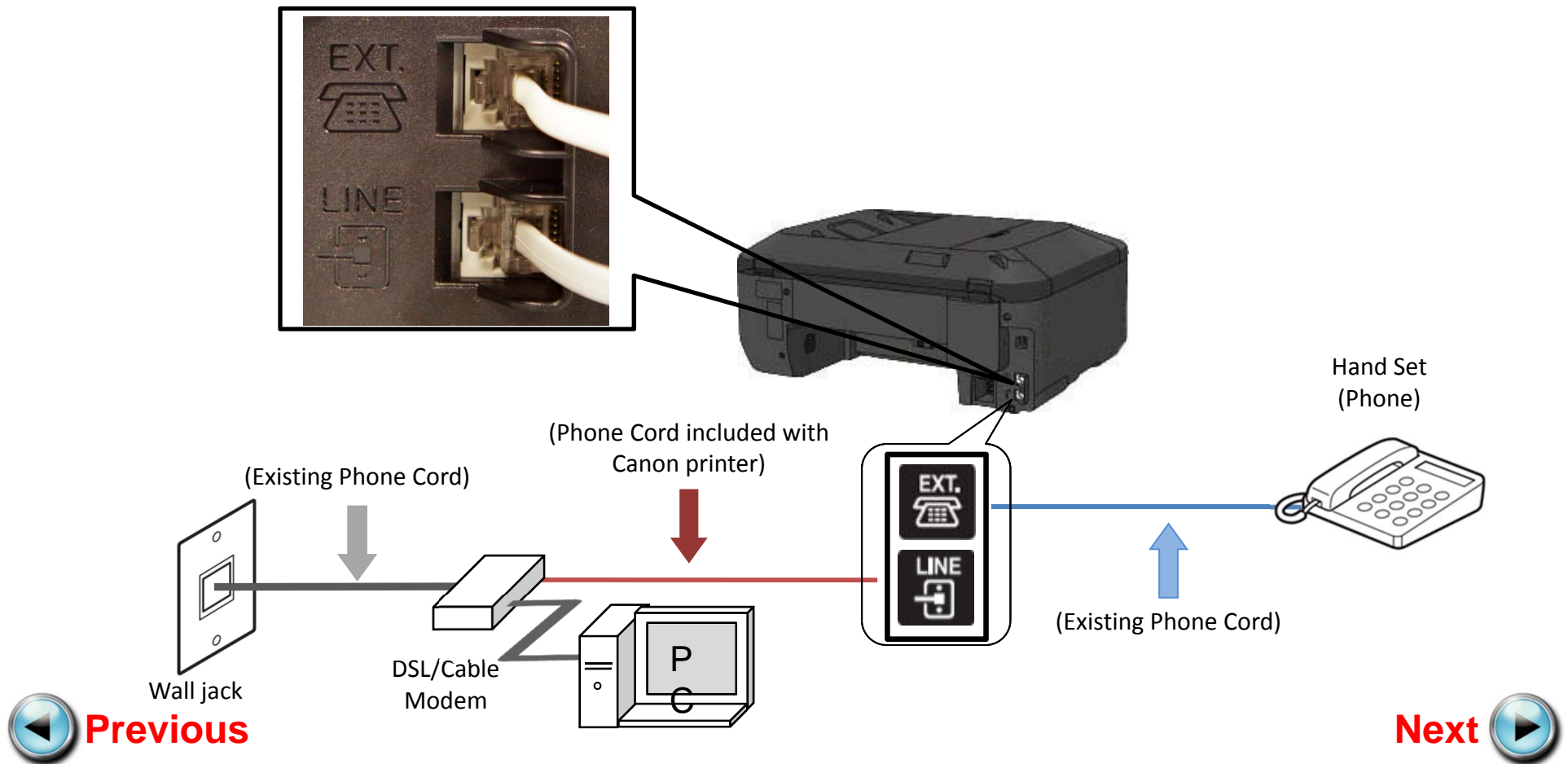
- Plug the second phone cord into the “EXT.” jack located on the rear of the multifunction.





# Fax to Phone Line Connection

- Plug the existing phone cord into the phone





# Setting Up The Receive Mode



## Step 1

Turn on the MX452 by pressing the **ON** button, if it is not powered on already.



## Step 2

Press the **FAX** button.



## Step 3

The fax standby screen will appear.



## Step 4

Press the **Menu** button.



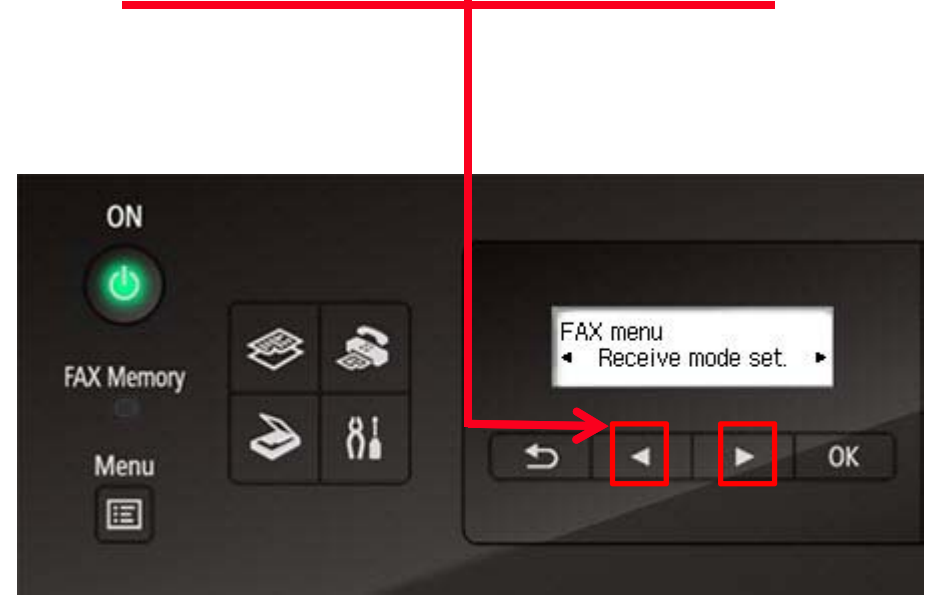
## Step 5

The **FAX menu** screen will appear.



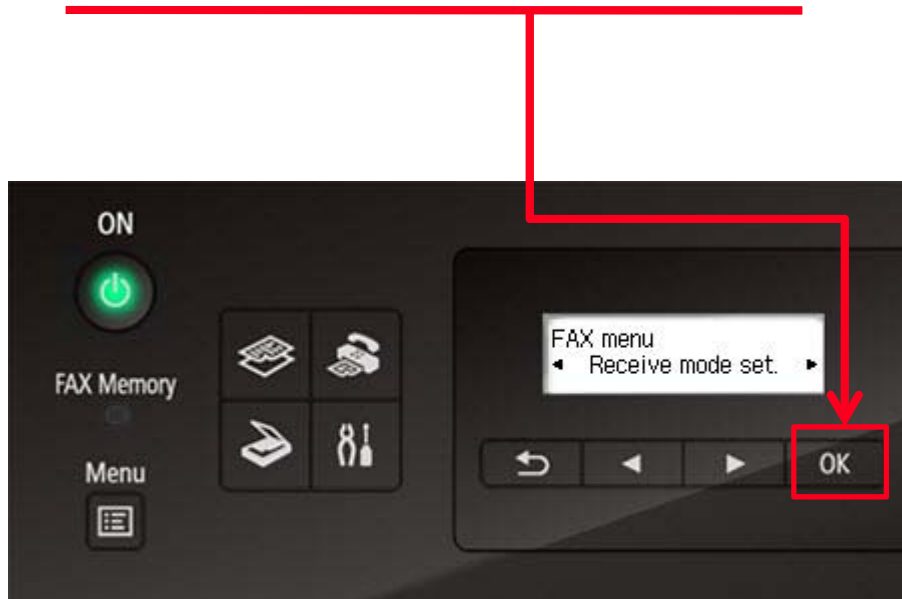
## Step 6

Use the **LEFT** or **RIGHT** button to select "Receive mode set".



## Step 7

Press the **OK** button.



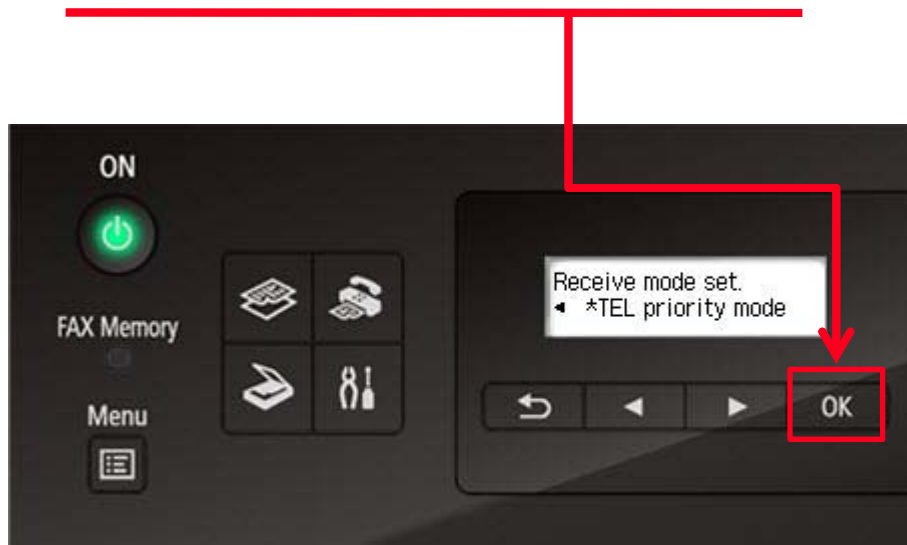
## Step 8

Use the **LEFT** or **RIGHT** button to select "TEL priority mode".



## Step 9

Press the **OK** button.



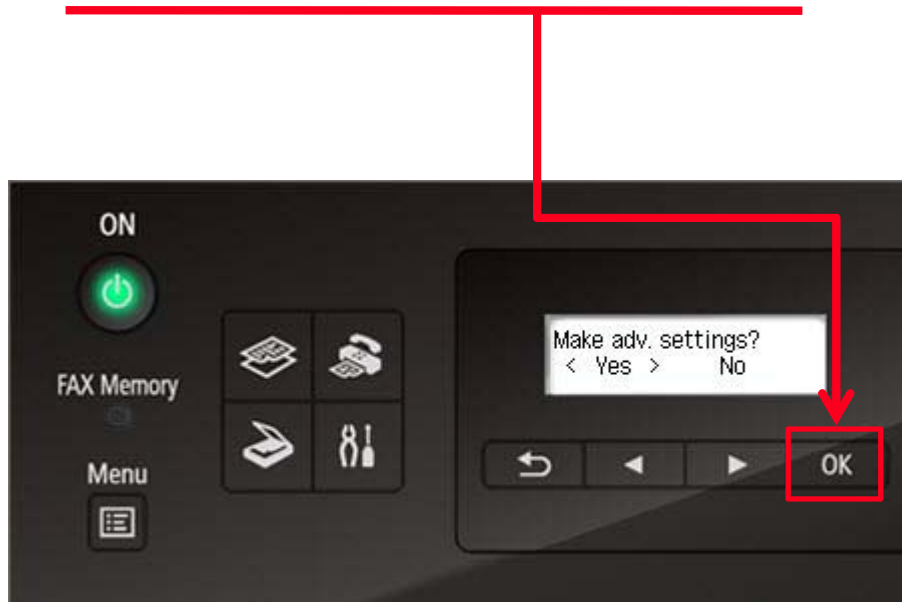
## Step 10

Use the **LEFT** or **RIGHT** button to select "Yes" at **Make adv. settings** screen.



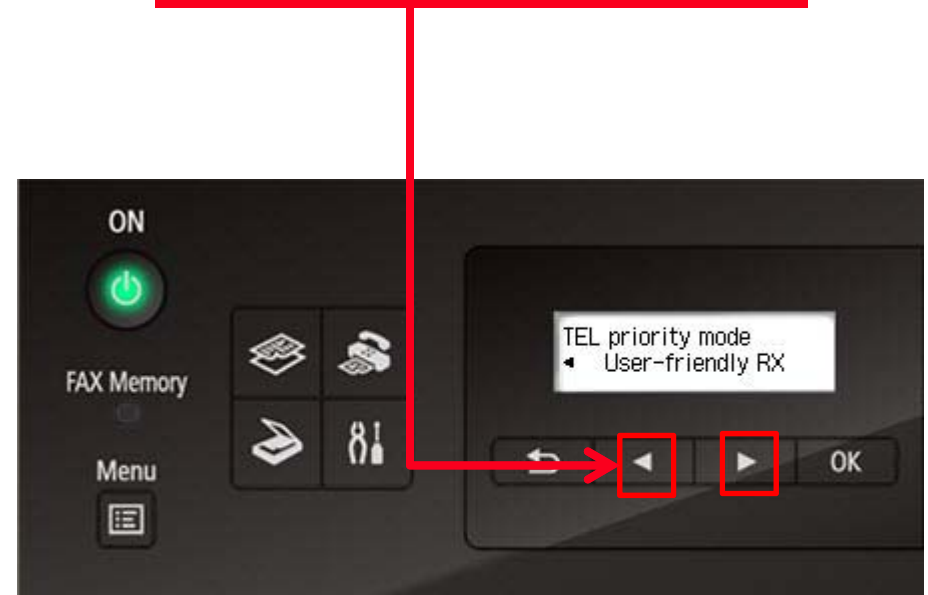
## Step 11

Press the **OK** button.



## Step 12

Use the **LEFT** or **RIGHT** button to select "User-friendly RX".





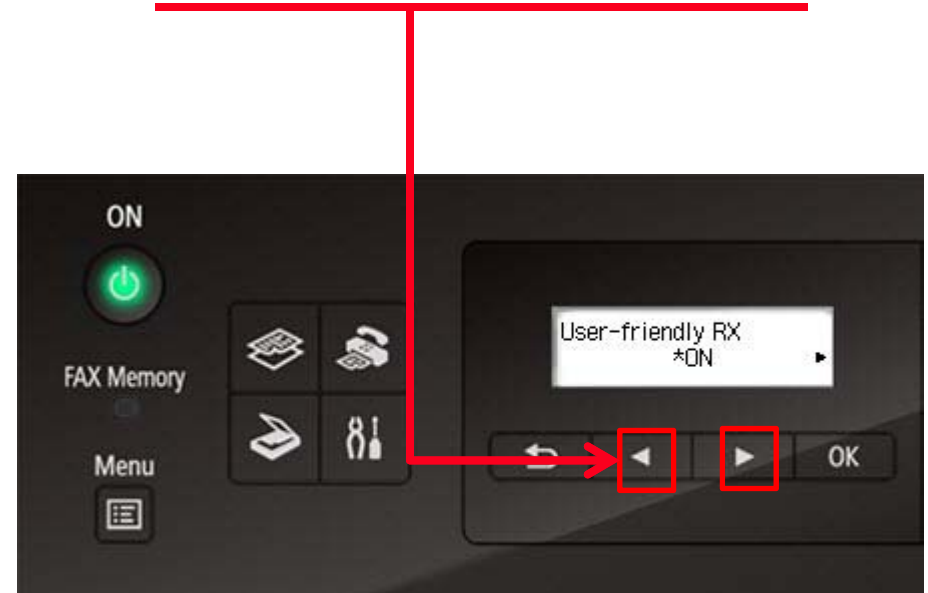
## Step 13

Press the **OK** button.



## Step 14

Use the **LEFT** or **RIGHT** button to select "ON".



## Step 15

Press the **OK** button.



## Step 16

You will return to the “Fax standby screen” and the receive mode will appear on the screen.



# Receiving A Fax

To receive a fax:

- Pick up the handset on the phone connected to the MX452.
- Listen for fax tones.
- When the tones stop hang up the handset.
- The MX452 will receive the fax document.

**IMPORTANT:** In order to receive a fax, you must pick up the handset on a phone that is connected to the multifunction.

