

5200 mAh Portable Battery Charger Quick Start Guide



APB03F

aluratek.com

qsg Q10243 Copyright © 2012 Aluratek, Inc. All Rights Reserved.

Operation

Charging the battery pack

- Use the included USB cable to charge the battery pack
- Connect the Micro USB tip to the Micro USB port on the battery
- Connect the USB Type A tip to a USB port on your computer or laptop. Use of an AC - USB Adapter is also acceptable (5V 500mA / 1000mA)
- The power status LEDs will light up according to charging capacity



Empty

<30% capacity

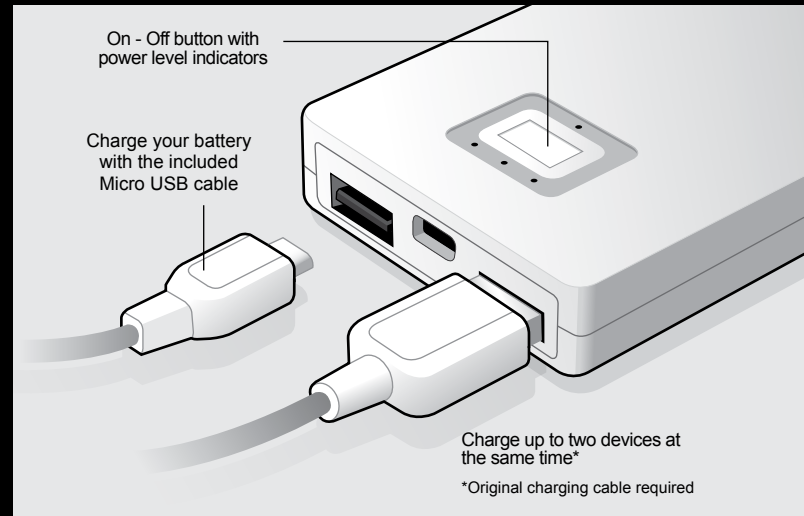
30 - 80% capacity

>80% capacity

Charging your digital device

- Use the original cable that came with your device or a cable with suitable connector
- Connect the USB tip to one of the USB Output ports on the battery pack
- Press the ON / OFF button to start charging the device

Product Application



Tech Support & Warranty Information

If you need further assistance, please contact the Aluratek support department for troubleshooting prior to returning this device.

E-mail: support@aluratek.com

Web: www.aluratek.com/support

Local (Tustin, CA): 714-586-8730

Toll free: 1-866-580-1978

Aluratek warrants this product against defect in material or workmanship for **1 Year** from the date of purchase.

For more information, please visit: <http://aluratek.com/warranty-return-policy>

You can register your product online at: <http://aluratek.com/product-registration>