

# External SATA Hard Drive Duplicator Quick Start Guide


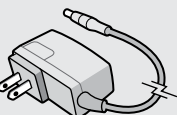
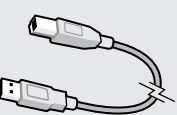
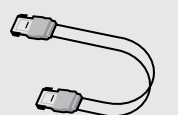

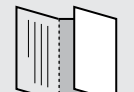


**AHDDUB100**

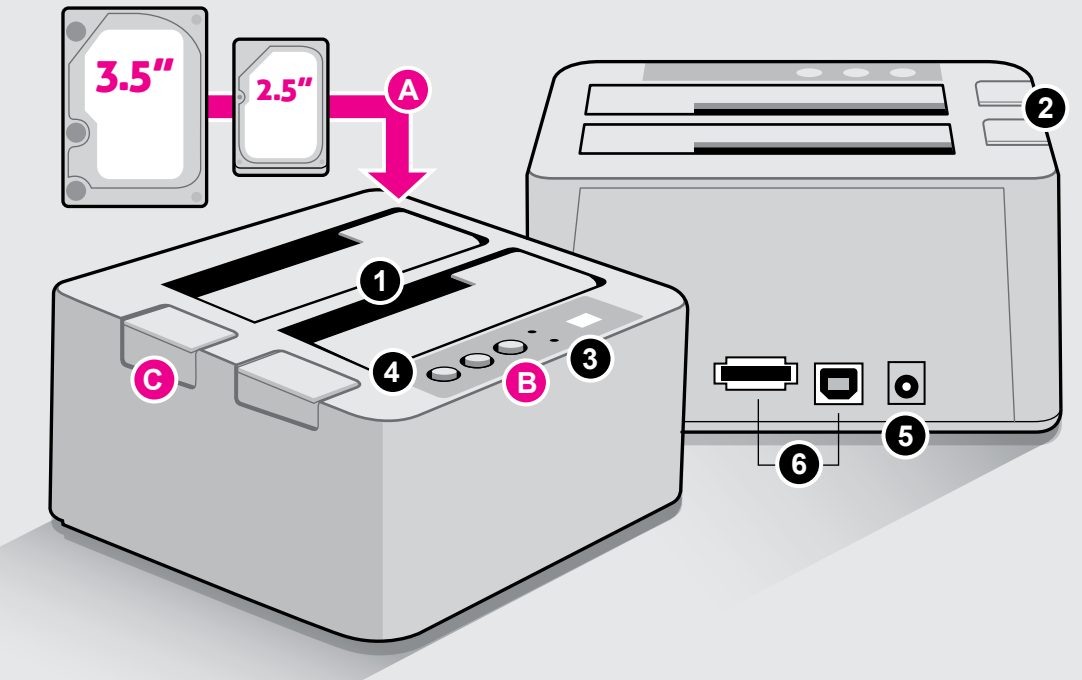
aluratek.com qsg Q10113 Copyright © 2012 Aluratek, Inc. All Rights Reserved.

### Package Contents

Your order has been carefully packaged and inspected. The following should be included in your package. Please inspect the contents of the package to ensure that you have received all items and that nothing has been damaged. If you discover a problem, please contact us immediately for assistance.

 SATA HDD Duplicator	 Power Adapter	 USB 2.0 Cable
 sSATA Cable	 Quick Start Guide	 Warranty & Registration Card

### Highlights and Application

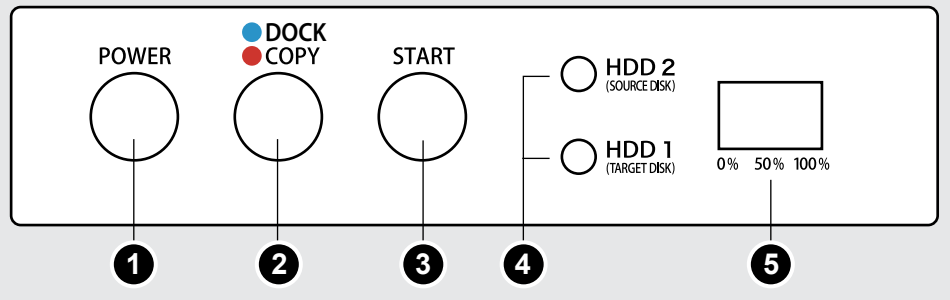


### Creates a duplicate bootable copy of your SATA Hard Drive

- |  |                                      |
|--|--------------------------------------|
| <b>1</b> SATA Hard Drive docking slots | <b>4</b> Power ON / OFF button       |
| <b>2</b> HDD release button            | <b>5</b> Power adapter port          |
| <b>3</b> Operating buttons and LEDs    | <b>6</b> USB 2.0 port and eSATA port |

<b>A</b>	<b>B</b>	<b>C</b>
Insert either a 2.5" or 3.5" hard drives into the dock slots	One touch button backup to create a duplicate copy of your hard drive	Push the button to release the HDD from the dock

### Control Panel Close-Up



- 1: Power button
- 2: Duplication mode button (AHDDUB100 defaults to docking mode when turned on)
- 3: Start button for duplication process
- 4: HDD 1 (Target Disk) and HDD 2 (Source Disk) LEDs
- 5: Duplication status bar

### Operating Instructions

**Getting Started:**

To make a duplicate copy of your hard drive, please remove the hard drive from your computer.

Please make sure the target/blank drive has the same or higher capacity than your source hard drive. The duplication will not start if the target drive has smaller capacity than the source drive.

It is recommended to use the same capacity blank/target hard drive as your source drive because you are making an exact ghost copy of your original hard drive. For example, if your original hard drive (source with data) is 80GB, the duplicated/ghost copy will also be 80GB even if you use a higher capacity drive.

Warning: All data on the target drive will be erased.

**Use AHDDUB100 as a Duplicator:**  
(Please make sure that AHDDUB100 is not connected to the computer)

- Step 1:** Connect the power adapter to AHDDUB100
- Step 2:** Insert the hard drive that you want to copy (the one with data) into the slot labeled "HDD 2 / Source Disk"
- Step 3:** Insert the blank hard drive into the slot labeled "HDD 1/Target Disk"
- Step 4:** Press the "POWER" button to power on AHDDUB100
- Step 5:** Press and hold the DOCK / COPY button for 3 seconds (the LED will turn from Blue to Red)
- Step 6:** Press the "START" button to start the duplication process (During the duplication process, the source and target LED will flash in pink color)
- Step 7:** The duplication process is completed when you see the status bar at 100%
- Step 8:** Press the "POWER" button to power off AHDDUB100 and remove the hard drives

**Use AHDDUB100 as a Hard Drive Docking Station:**  
(Please make sure that the power adapter is not connect to AHDDUB100)

- Step 1:** Connect the USB Type-B connector or eSATA cable to AHDDUB100
- Step 2:** Connect the USB Type-A connector or eSATA cable to your computer
- Step 3:** Connect the power adapter to AHDDUB100
- Step 4:** Insert 1 or 2 drives into the slots
- Step 5:** Press the "Power" button to power on AHDDUB100
- Step 6:** For drives that are formatted, you will see the drives in "My Computer". For non-formatted drives, you will need to go to "Disk Management" to format the drive before you can access the drive.

Note: The computer eSATA port needs to support port multiplier to see both hard drives at once if using eSATA connection.

### Technical Support

If you need further assistance, please contact the Aluratek support department for troubleshooting prior to returning this device.

**E-mail: support@aluratek.com**  
**Web: www.aluratek.com/support**  
**Local (Tustin, CA): 714-586-8730**  
**Toll free: 1-866-580-1978**

### Radio and TV Interference Statement

**WARNING!!!** This equipment has been tested and found to comply with the limits of a Class B digital device, pursuant to part 15 of the FCC rules. These limits are designed to provide reasonable protection against harmful interference in a residential installation.

This equipment generates, uses and can radiate radio frequency energy and, if not installed and used in accordance with the instruction, may cause harmful interference to radio communications. However, there is no guarantee that interference will not occur in a particular installation. If this equipment does cause harmful interference to radio or television reception, which can be determined by turning the equipment off and on, the user is encouraged to try to correct the interference by whatever measures may be required to correct the interference.

### Warranty

Aluratek warrants this product against defect in material or workmanship for **1 YEAR** from the date of purchase.

This warranty becomes invalid if the factory-supplied serial number or "warranty void" sticker has been removed or altered on the product.

This warranty does not cover:

- A) Cosmetic damage or damage due to acts of God
- B) Accident, misuse, abuse, negligence or modification of any part of the product.
- C) Damage due to improper operation or maintenance, connection to improper equipment, or attempted repair by anyone other than Aluratek.
- D) Products sold AS IS or WITH FAULTS.

IN NO EVENT SHALL ALURATEK'S LIABILITY EXCEED THE PRICE PAID FOR THE PRODUCT FROM DIRECT, INDIRECT, SPECIAL, INCIDENTAL, OR CONSEQUENTIAL DAMAGES RESULTING FROM THE USE OF THE PRODUCT, IT'S ACCOMPANYING SOFTWARE, OR IT'S DOCUMENTATION.

Aluratek makes no warranty or representation, expressed, implied, or statutory, with respect to it's products, contents or use of this documentation and all accompanying software, and specifically disclaims it's quality, performance, merchantability, or fitness for any particular purpose. Aluratek reserves the right to revise or update it's product, software or documentation without obligation to notify any individual or entity.