

B150 PRO GAMING D3



Motherboard

E10538

First Edition (V1)

July 2015

Copyright © 2015 ASUSTeK COMPUTER INC. All Rights Reserved.

No part of this manual, including the products and software described in it, may be reproduced, transmitted, transcribed, stored in a retrieval system, or translated into any language in any form or by any means, except documentation kept by the purchaser for backup purposes, without the express written permission of ASUSTeK COMPUTER INC. ("ASUS").

Product warranty or service will not be extended if: (1) the product is repaired, modified or altered, unless such repair, modification or alteration is authorized in writing by ASUS; or (2) the serial number of the product is defaced or missing.

ASUS PROVIDES THIS MANUAL "AS IS" WITHOUT WARRANTY OF ANY KIND, EITHER EXPRESS OR IMPLIED, INCLUDING BUT NOT LIMITED TO THE IMPLIED WARRANTIES OR CONDITIONS OF MERCHANTABILITY OR FITNESS FOR A PARTICULAR PURPOSE. IN NO EVENT SHALL ASUS, ITS DIRECTORS, OFFICERS, EMPLOYEES OR AGENTS BE LIABLE FOR ANY INDIRECT, SPECIAL, INCIDENTAL, OR CONSEQUENTIAL DAMAGES (INCLUDING DAMAGES FOR LOSS OF PROFITS, LOSS OF BUSINESS, LOSS OF USE OR DATA, INTERRUPTION OF BUSINESS AND THE LIKE), EVEN IF ASUS HAS BEEN ADVISED OF THE POSSIBILITY OF SUCH DAMAGES ARISING FROM ANY DEFECT OR ERROR IN THIS MANUAL OR PRODUCT.

SPECIFICATIONS AND INFORMATION CONTAINED IN THIS MANUAL ARE FURNISHED FOR INFORMATIONAL USE ONLY, AND ARE SUBJECT TO CHANGE AT ANY TIME WITHOUT NOTICE, AND SHOULD NOT BE CONSTRUED AS A COMMITMENT BY ASUS. ASUS ASSUMES NO RESPONSIBILITY OR LIABILITY FOR ANY ERRORS OR INACCURACIES THAT MAY APPEAR IN THIS MANUAL, INCLUDING THE PRODUCTS AND SOFTWARE DESCRIBED IN IT.

Products and corporate names appearing in this manual may or may not be registered trademarks or copyrights of their respective companies, and are used only for identification or explanation and to the owners' benefit, without intent to infringe.

Offer to Provide Source Code of Certain Software

This product contains copyrighted software that is licensed under the General Public License ("GPL"), under the Lesser General Public License Version ("LGPL") and/or other Free Open Source Software Licenses. Such software in this product is distributed without any warranty to the extent permitted by the applicable law. Copies of these licenses are included in this product.

Where the applicable license entitles you to the source code of such software and/or other additional data, you may obtain it for a period of three years after our last shipment of the product, either

(1) for free by downloading it from <http://support.asus.com/download>
or

(2) for the cost of reproduction and shipment, which is dependent on the preferred carrier and the location where you want to have it shipped to, by sending a request to:

ASUSTeK Computer Inc.
Legal Compliance Dept.
15 Li Te Rd.,
Beitou, Taipei 112
Taiwan

In your request please provide the name, model number and version, as stated in the About Box of the product for which you wish to obtain the corresponding source code and your contact details so that we can coordinate the terms and cost of shipment with you.

The source code will be distributed WITHOUT ANY WARRANTY and licensed under the same license as the corresponding binary/object code.

This offer is valid to anyone in receipt of this information.

ASUSTeK is eager to duly provide complete source code as required under various Free Open Source Software licenses. If however you encounter any problems in obtaining the full corresponding source code we would be much obliged if you give us a notification to the email address gpl@asus.com, stating the product and describing the problem (please DO NOT send large attachments such as source code archives, etc. to this email address).

Contents

Safety information	iv
About this guide	iv
Package contents	vi
B150 PRO GAMING D3 specifications summary	vi

Chapter 1: Product introduction

1.1 Before you proceed	1-1
1.2 Motherboard overview	1-1
1.3 Central Processing Unit (CPU)	1-3
1.4 System memory	1-7
1.5 Expansion slots.....	1-15
1.6 Jumpers	1-17
1.7 Connectors	1-18
1.8 Onboard LED	1-29
1.9 Software support.....	1-31

Chapter 2: BIOS information

2.1 Managing and updating your BIOS	2-1
2.2 BIOS setup program	2-6
2.3 My Favorites	2-13
2.4 Main menu	2-14
2.5 Ai Tweaker menu.....	2-16
2.6 Advanced menu	2-24
2.7 Monitor menu	2-32
2.8 Boot menu	2-35
2.9 Tool menu	2-40
2.10 Exit menu	2-41
2.11 Installing an operating system	2-42

Appendices

Notices.....	A-1
ASUS contact information	A-4

Safety information

Electrical safety

- To prevent electrical shock hazard, disconnect the power cable from the electrical outlet before relocating the system.
- When adding or removing devices to or from the system, ensure that the power cables for the devices are unplugged before the signal cables are connected. If possible, disconnect all power cables from the existing system before you add a device.
- Before connecting or removing signal cables from the motherboard, ensure that all power cables are unplugged.
- Seek professional assistance before using an adapter or extension cord. These devices could interrupt the grounding circuit.
- Ensure that your power supply is set to the correct voltage in your area. If you are not sure about the voltage of the electrical outlet you are using, contact your local power company.
- If the power supply is broken, do not try to fix it by yourself. Contact a qualified service technician or your retailer.

Operation safety

- Before installing the motherboard and adding components, carefully read all the manuals that came with the package.
- Before using the product, ensure all cables are correctly connected and the power cables are not damaged. If you detect any damage, contact your dealer immediately.
- To avoid short circuits, keep paper clips, screws, and staples away from connectors, slots, sockets and circuitry.
- Avoid dust, humidity, and temperature extremes. Do not place the product in any area where it may be exposed to moisture.
- Place the product on a stable surface.
- If you encounter technical problems with the product, contact a qualified service technician or your retailer.

About this guide

This user guide contains the information you need when installing and configuring the motherboard.

How this guide is organized

This guide contains the following parts:

- **Chapter 1: Product introduction**
This chapter describes the features of the motherboard and the new technology it supports. It includes descriptions of the switches, jumpers, and connectors on the motherboard.
- **Chapter 2: BIOS information**
This chapter discusses changing system settings through the BIOS Setup menus. Detailed descriptions for the BIOS parameters are also provided.

Where to find more information

Refer to the following sources for additional information and for product and software updates.

1. **ASUS websites**

The ASUS website provides updated information on ASUS hardware and software products. Refer to the ASUS contact information.

2. **Optional documentation**

Your product package may include optional documentation, such as warranty flyers, that may have been added by your dealer. These documents are not part of the standard package.

Conventions used in this guide

To ensure that you perform certain tasks properly, take note of the following symbols used throughout this manual.



DANGER/WARNING: Information to prevent injury to yourself when completing a task.



CAUTION: Information to prevent damage to the components when completing a task



IMPORTANT: Instructions that you **MUST** follow to complete a task.



NOTE: Tips and additional information to help you complete a task.

Typography

Bold text

Indicates a menu or an item to select.

Italics

Used to emphasize a word or a phrase.

<Key>

Keys enclosed in the less-than and greater-than sign means that you must press the enclosed key.

Example: <Enter> means that you must press the Enter or Return key.

<Key1> + <Key2> + <Key3>

If you must press two or more keys simultaneously, the key names are linked with a plus sign (+).

Package contents

Check your motherboard package for the following items.

Motherboard	ASUS Gaming Motherboard – B150 PRO GAMING D3
Cables	4 x Serial ATA 6.0 Gb/s cables
Accessories	1 x I/O Shield 1 x PRO GAMING cable labels 1 x M.2 screw package
Application DVD	Support DVD
Documentation	User Guide



If any of the above items is damaged or missing, contact your retailer.

B150 PRO GAMING D3 specifications summary

CPU	LGA1151 socket for 6th Generation Intel® Core™ i7 / i5 / i3, Pentium®, and Celeron® processors Supports Intel® 14nm CPU Supports Intel® Turbo Boost Technology 2.0* * The Intel® Turbo Boost Technology 2.0 support depends on the CPU types. ** Refer to www.asus.com for Intel® CPU support list.
Chipset	Intel® B150 Express Chipset
Memory	4 x DIMMs, maximum 64 GB, DDR3 1866(O.C.)/1600/1333 MHz, non-ECC, un-buffered memory* Dual-channel memory architecture Supports Intel® Extreme Memory Profile (XMP) * Hyper DIMM support is subject to the physical characteristics of individual CPUs. Please refer to Memory QVL (Qualified Vendors List) for details. ** Refer to www.asus.com or this user manual for the Memory QVL (Qualified Vendors List). *** Due to Intel® chipset limitation, DDR3 1866 MHz and higher memory modules on XMP mode will run at the maximum transfer rate of DDR3 1866 MHz. ****To ensure system stability, either install DDR3L DIMMs or DDR3 DIMMs with voltage lower than 1.5V.
Graphics	Integrated graphics processor - Intel® HD Graphics support Multi-VGA output support: HDMI, D-Sub ports - Supports HDMI 1.4b with maximum resolution of 4096 x 2160 @24Hz - Supports RGB with maximum resolution of 1920 x 1200 @60Hz Supports Intel® InTru™ 3D, Quick Sync Video, Intel® Clear Video HD Technology, and Intel® Insider™ Maximum shared memory of 512 MB
Expansion slots	1 x PCI Express 3.0 x16 slot (gray, at x16 mode) 1 x PCI Express 3.0 x16 slot (black, max. at x4 mode, compatible with PCIe x1 and x4 devices) 2 x PCI Express 3.0 x1 slots* 2 x PCI slots * When PCIe x16_2 is occupied by x4 or faster devices, PCIe x1_1 and PCIe x1_2 will be disabled.

(continued on the next page)

B150 PRO GAMING D3 specifications summary

Multi-GPU Support	Supports AMD® 2-Way/ Quad-GPU CrossFireX™ Technology
Audio	SupremeFX 8-Channel High Definition Audio CODEC <ul style="list-style-type: none">- Supports Jack-detection, Multi-streaming, and Front Panel MIC Jack-retasking- High quality 115dB SNR stereo playback output Audio Features: <ul style="list-style-type: none">- SupremeFX Shielding™ Technology- Headphone AMP- Optical S/PDIF out port at back panel- Sonic Radar II
Storage	Intel® B150 Express Chipset <ul style="list-style-type: none">- 6 x SATA 6.0 Gb/s connectors (gray)- 1 x M.2 Socket 3 with M Key, type 2242/2260/2280/22110 storage devices support (both SATA & PCIe x2 mode)* * When the M.2 Socket 3 is operating in SATA mode, SATA port 1 will be disabled.
LAN	Intel® Gigabit LAN Anti-surge LANGuard GameFirst technology
USB	ASMedia® USB 3.1 controller - supports ASUS USB 3.1 Boost: <ul style="list-style-type: none">- 2 x USB 3.1 ports (1 Type-A, red; 1 Type-C, black at back panel) Intel® B150 Express Chipset - supports ASUS USB 3.1 Boost: <ul style="list-style-type: none">- 6 x USB 3.0 / 2.0 ports (2 ports at mid-board, 4 ports at rear panel, blue)- 6 x USB 2.0/1.1 ports (6 ports at mid-board)* * Two USB2.0 ports at mid-board share with the ROG extension (ROG_EXT) port.
ASUS gaming features	Gamer's Guardian <ul style="list-style-type: none">- DIGI+ VRM- DRAM Overcurrent Protection- ESD Guards on VGA, LAN, Audio, KBMS and USB 3.0/ 2.0 ports- Highly Durable Components- Stainless Steel Back I/O- Q-Design (Q-Shield, Q-DIMM, Q-LED, Q-Slot) Performance Level Up <ul style="list-style-type: none">- DIGI+ VRM- AI Suite 3- Fan Xpert 3 featuring Fan Auto Tuning function and multiple thermistors selection for optimized system cooling control- UEFI BIOS EZ Mode (CrashFree BIOS 3, EZ Flash 3)- RAMCache - Speed your game loads ASUS Exclusive Features <ul style="list-style-type: none">- ASUS CPU-Z- USB 3.1 Boost featuring speedy USB 3.1 transmission- AI Charger+- Disk Unlocker- Push Notice- Media Streamer

(continued on the next page)

B150 PRO GAMING D3 specifications summary

Rear Panel I/O ports	1 x PS/2 keyboard port 1 x PS/2 mouse port 1 x Optical S/PDIF out 1 x HDMI port 1 x D-Sub port 1 x LAN (RJ-45) port 4 x USB 3.0 / 2.0 ports 2 x USB 3.1 ports (1 Type-A, red; 1 Type-C, black) 8-channel audio I/O ports
Internal connectors	1 x 19-pin USB 3.0 / 2.0 connector support additional 2 USB 3.0 / 2.0 ports 3 x USB 2.0 / 1.1 connectors support additional 6 USB 2.0 / 1.1 ports (One connector shares with the ROG_EXT header) 1 x System panel connector 1 x Front panel audio connector (AAFP) 6 x SATA 6.0 Gb/s connectors (gray) 1 x M.2 Socket 3 for M Key, type 2242/2260/2280/22110 devices 1 x 4-pin CPU fan connector 1 x 4-pin CPU optional fan connector 3 x Chassis fan connectors (4-pin) for both 3-pin (DC mode) and 4-pin (PWM mode) coolers control 1 x Thermal sensor connector 1 x COM header 1 x TPM header 1 X CPU Over Voltage jumper (CPU_OV) 1 x 2-pin Clear CMOS jumper 1 x 24-pin EATX power connector 1 x 8-pin ATX 12V power connector 1 x ROG extension (ROG_EXT) header
BIOS features	128 Mb Flash ROM, UEFI AMI BIOS, PnP, DMI 3.0, WfM 2.0, SM BIOS 3.0, ACPI 5.0, Multi-language BIOS, ASUS EZ Flash 3, CrashFree BIOS 3, F6 Q-fan Control, F3 My Favorites, F9 Quick Note, Last Modified Log, F12 PrintScreen function, and ASUS DRAM SPD (Serial Presence Detect) memory information
Manageability	WfM 2.0, DMI 3.0, WOL by PME, PXE
Support DVD	Drivers ASUS utilities EZ Update Anti-virus software (OEM version)
OS support	Windows® 10* Windows® 8.1* Windows® 7 * 64-bit supported only
Form factor	ATX form factor: 12.0 in. x 9.3 in. (30.5 cm x 23.6 cm)



Specifications are subject to change without notice.

Product introduction

1

1.1 Before you proceed

Take note of the following precautions before you install motherboard components or change any motherboard settings.



- Unplug the power cord from the wall socket before touching any component.
- Before handling components, use a grounded wrist strap or touch a safely grounded object or a metal object, such as the power supply case, to avoid damaging them due to static electricity.
- Hold components by the edges to avoid touching the ICs on them.
- Whenever you uninstall any component, place it on a grounded antistatic pad or in the bag that came with the component.
- Before you install or remove any component, ensure that the ATX power supply is switched off or the power cord is detached from the power supply. Failure to do so may cause severe damage to the motherboard, peripherals, or components.

1.2 Motherboard overview

Before you install the motherboard, study the configuration of your chassis to ensure that the motherboard fits.



Unplug the power cord before installing or removing the motherboard. Failure to do so can cause you physical injury and damage to motherboard components.

1.2.1 Placement direction

When installing the motherboard, place it into the chassis in the correct orientation. The edge with external ports goes to the rear part of the chassis as indicated in the image.

1.2.2 Screw holes

Place six screws into the holes indicated by circles to secure the motherboard to the chassis.



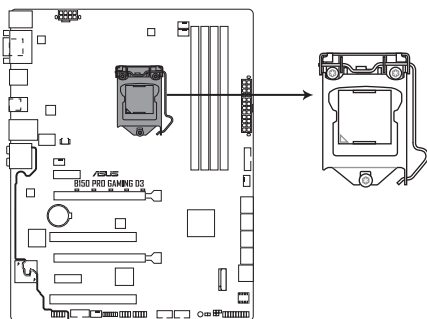
Do not overtighten the screws! Doing so can damage the motherboard.

1.2.4 Layout contents

Connectors/Jumpers/Slots/LED	Page
1. ATX power connectors (24-pin EATXPWR, 8-pin ATX12V)	1-23
2. LED light connector (3-pin LED_Light)	1-21
3. CPU, CPU optional, and chassis fan connectors (4-pin CPU_FAN, 4-pin CPU_OPT, 4-pin CHA_FAN1~3)	1-22
4. Intel® LGA1151 CPU socket	1-3
5. DDR3 DIMM slots	1-7
6. USB 3.0 connector (20-1 pin USB3_12)	1-25
7. Model name LEDs	1-29
8. Intel® B150 Serial ATA 6.0 Gb/s connector (7-pin SATA6G_1~6)	1-26
9. M.2 Socket 3	1-28
10. Thermal sensor connector (2-pin T_SENSOR)	1-23
11. System panel connector (20-5 pin PANEL)	1-27
12. CPU Over Voltage jumper (3-pin CPU_OV)	1-18
13. Clear RTC RAM (2-pin CLRTC)	1-17
14. Standby Power LED (SB_PWR)	1-29
15. USB 2.0 connectors (10-1 pin USB78, USB910, USB1112)	1-25
16. ROG Extension connector (18-1 pin ROG_EXT)	1-24
17. TPM connector (14-1 pin TPM)	1-21
18. Serial port connectors (10-1 pin COM)	1-20
19. Front panel audio connector (10-1 pin AAFP)	1-24
20. SupremeFX LED	1-30

1.3 Central Processing Unit (CPU)

This motherboard comes with a surface mount LGA1151 socket designed for 6th Generation Intel® Core™ i7 / i5 / i3, Pentium®, and Celeron® processors.



B150 PRO GAMING D3 CPU socket LGA1151

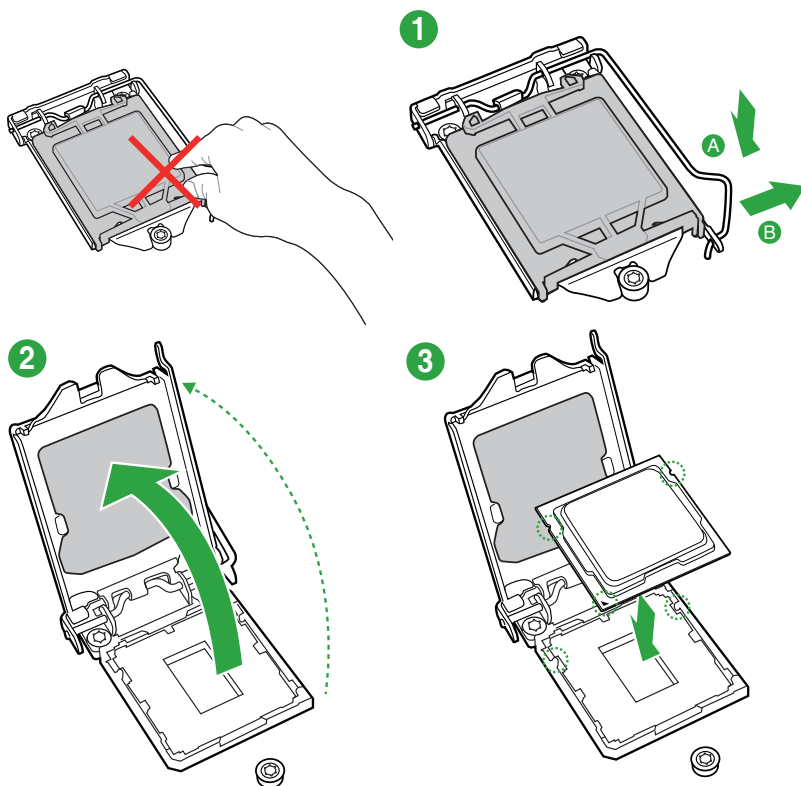


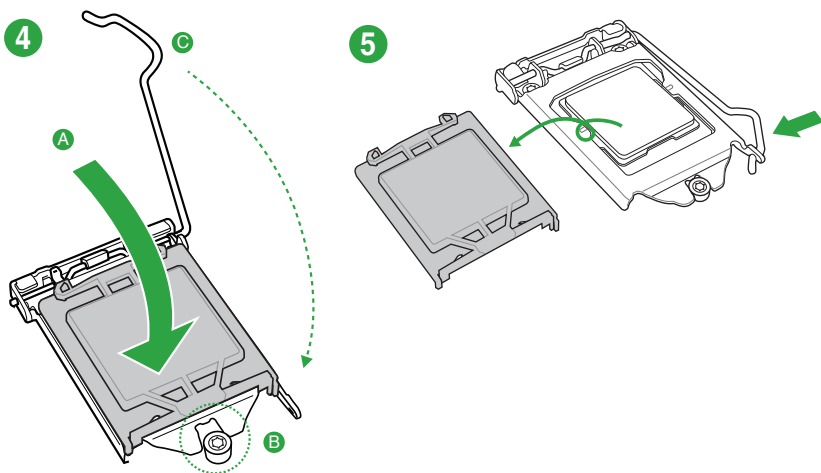
Unplug all power cables before installing the CPU.



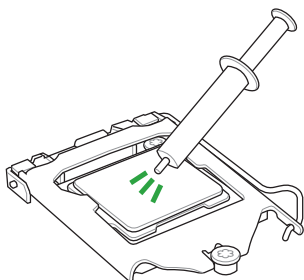
- Ensure that you install the correct CPU designed for the LGA1151 socket only. DO NOT install a CPU designed for LGA1150, LGA1155 and LGA1156 sockets on the LGA1151 socket.
- Upon purchase of the motherboard, ensure that the PnP cap is on the socket and the socket contacts are not bent. Contact your retailer immediately if the PnP cap is missing, or if you see any damage to the PnP cap/socket contacts/motherboard components.
- Keep the cap after installing the motherboard. ASUS will process Return Merchandise Authorization (RMA) requests only if the motherboard comes with the cap on the LGA1151 socket.
- The product warranty does not cover damage to the socket contacts resulting from incorrect CPU installation/removal, or misplacement/loss/incorrect removal of the PnP cap.

1.3.1 Installing the CPU



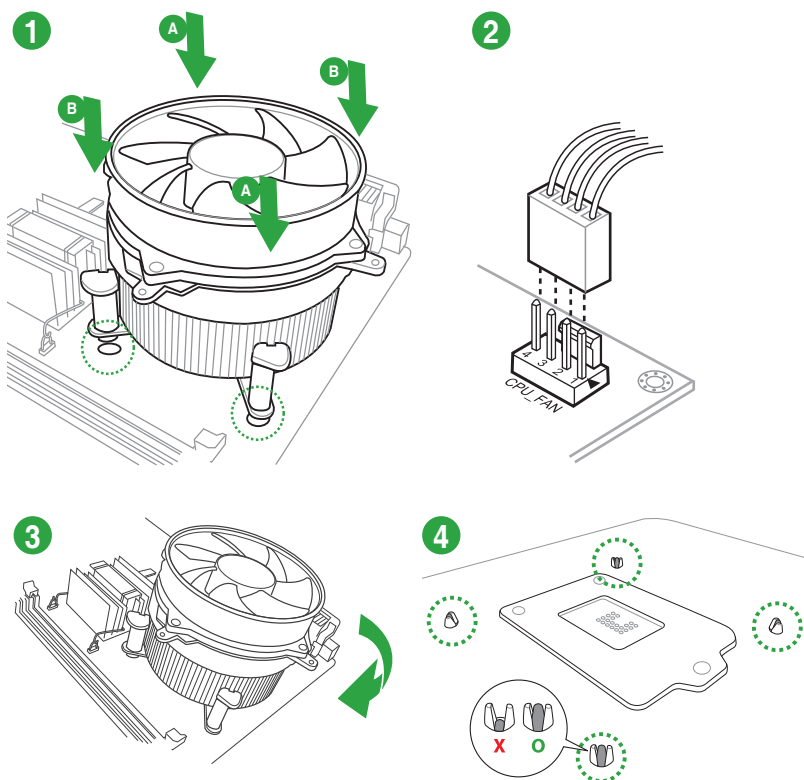


1.3.2 CPU heatsink and fan assembly installation

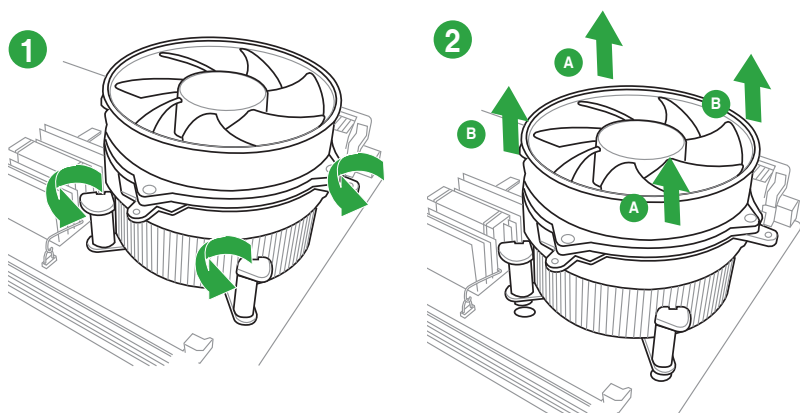


Apply the Thermal Interface Material to the CPU heatsink and CPU before you install the heatsink and fan if necessary.

To install the CPU heatsink and fan assembly



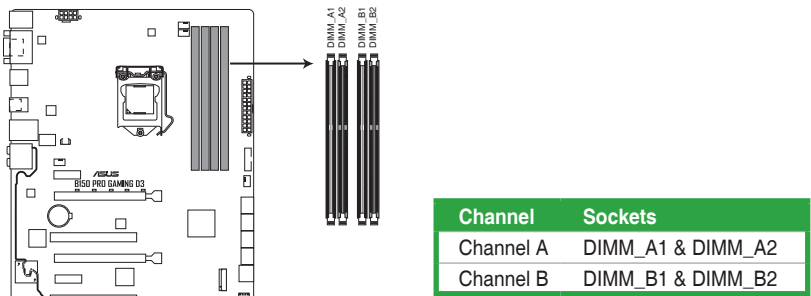
To uninstall the CPU heatsink and fan assembly



1.4 System memory

1.4.1 Overview

This motherboard comes with four Double Data Rate 3 (DDR3) Dual Inline Memory Module (DIMM) sockets. The figure illustrates the location of the DDR3 DIMM sockets:

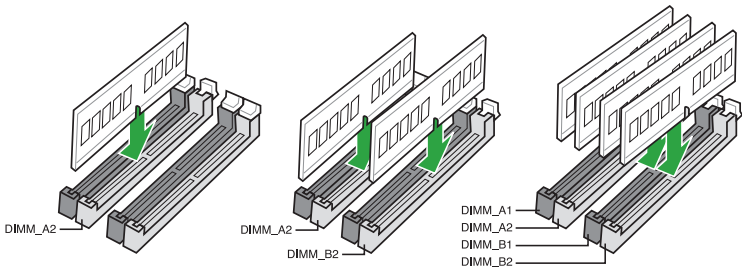


B150 PRO GAMING D3 240-pin DDR3 DIMM sockets

1.4.2 Memory configurations

You may install 2 GB, 4 GB, 8 GB, and 16 GB unbuffered non-ECC DDR3 DIMMs into the DIMM sockets. You can refer to the recommended memory population below.

Recommended memory configurations





-
- You may install varying memory sizes in Channel A and Channel B. The system maps the total size of the lower-sized channel for the dual-channel configuration. Any excess memory from the higher-sized channel is then mapped for single-channel operation.
 - According to Intel® CPU spec, DIMM voltage below 1.5V is recommended to protect the CPU.
 - Due to the memory address limitation on 32-bit Windows® OS, when you install 4GB or more memory on the motherboard, the actual usable memory for the OS can be about 3GB or less. For effective use of memory, we recommend that you do any of the following:
 - Use a maximum of 3 GB system memory if you are using a 32-bit Windows® OS.
 - Install a 64-bit Windows® OS if you want to install 4GB or more on the motherboard.
 - For more details, refer to the Microsoft® support site at <http://support.microsoft.com/kb/929605/en-us>.
-



-
- The default memory operation frequency is dependent on its Serial Presence Detect (SPD), which is the standard way of accessing information from a memory module. Under the default state, some memory modules for overclocking may operate at a lower frequency than the vendor-marked value. To operate at the vendor-marked or at a higher frequency, refer to section **2.5 Ai Tweaker menu** for manual memory frequency adjustment.
 - Always install the DIMMS with the same CAS Latency. For an optimum compatibility, we recommend that you install memory modules of the same version or data code (D/C) from the same vendor. Check with the vendor to get the correct memory modules.
 - For system stability, use a more efficient memory cooling system to support a full memory load (4 DIMMs) or overclocking condition.
-

B150 PRO GAMING D3 motherboard memory Qualified Vendors Lists (QVL)

DDR3 1866 MHz capability

Vendors	Part No.	Size	SS/ DS	Chip Brand	Chip NO.	Timing	Voltage	DIMM socket support (Optional)		
								1 DIMM	2 DIMMs	4 DIMMs
CORSAIR	CMY8GX3M2A1866C9	4GB	SS	N/A	N/A	9-10-9-27	1.50V	*	*	*
CORSAIR	CMT6GX3MA1866C9(XMP)	6GB(3 x 2GB)	DS	N/A	N/A	9-9-9-24	1.65V	*	*	*
CORSAIR	CMZ8GX3M2A1866C9(XMP)	8GB(2 x 4GB)	DS	N/A	N/A	9-10-9-27	1.50V	*	*	*
CORSAIR	CMD32GX3M4A1866C9(Ver3.24)	8GB	DS	N/A	N/A	9-10-9-27	1.50V	*	*	*
CORSAIR	CMY16GX3M2A1866C9(Ver3.24)	8GB	DS	N/A	N/A	9-10-9-27	1.50V	*	*	*
CORSAIR	CMY32GX3M4A1866C9	8GB	DS	N/A	N/A	9-10-9-27	1.50V	*	*	*
CORSAIR	CMZ16GX3M2A1866C10(Ver4.21)	8GB	DS	N/A	N/A	10-11-10-30	1.50V	*	*	*
CRUCIAL	BLE4G3D1869DE1TX0.16FMD(XMP)	4GB	DS	N/A	N/A	9-9-9-27	1.5V	*	*	*
CRUCIAL	BLT4G3D1869DT1TX0.13FKD(XMP)	4GB	DS	N/A	N/A	9-9-9-27	1.5V	*	*	*
CRUCIAL	BLT4G3D1869DT2TX0B.16FMR(XMP)	4GB	DS	N/A	N/A	9-9-9-27	1.5V	*	*	*
CRUCIAL	BLS8G3D18ADS3.16FED	8GB	DS	N/A	N/A	10-10-10-30	1.5V	*	*	*
CRUCIAL	BLE4G3D1869DE1TX0.16FKR	4GB	DS	N/A	N/A	9-9-9-27	1.5V	*	*	*
CRUCIAL	BLE8G3D1869DE1TX0.16FED	8GB	DS	N/A	N/A	9-9-9-27	1.5V	*	*	*
CRUCIAL	BLT8G3D1869DT1TX0.16FED	8GB	DS	N/A	N/A	9-9-9-27	1.5V	*	*	*
G.SKILL	F3-14900CL9Q-16GBZL(XMP1.3)	16GB(4GB x 4)	DS	N/A	N/A	9-9-9-28	1.5V	*	*	*
G.SKILL	F3-14900CL10Q2-64GBZLD(XMP1.3)	64GB(8GB x 8)	DS	N/A	N/A	10-11-10-30	1.5V	*	*	*
G.SKILL	F3-14900CL9D-8GBXL(XMP)	8GB(2 x 4GB)	DS	N/A	N/A	9-9-9-28	1.5V	*	*	*
G.SKILL	F3-14900CL9Q-8GBXL(XMP)	8GB(2GBx4)	DS	N/A	N/A	9-9-9-24	1.6V	*	*	*
KINGSTON	KHX1866C9D3K4/16GX(XMP)	16GB(4GB x 4)	DS	N/A	N/A	9-9-9-24-33	1.65V	*	*	*
KINGSTON	KHX18C9T2K2/8X	8GB(2 x 4GB)	DS	N/A	N/A	9-9-9-24-33	1.65	*	*	*
KINGSTON	KHX1866C11D3P1K2/8G	8GB(4GB x 2)	DS	N/A	N/A	-	1.5V	*	*	*
KINGSTON	KHX1866C9D3K2/8GX(XMP)	8GB(4GB x 2)	DS	N/A	N/A	9-9-9-24-33	1.65V	*	*	*
KINGSTON	KHX18C10T3K4/32X	8GB	DS	N/A	N/A	11-11-11-28-39	1.5V	*	*	*
AMD	AP38G1869U1K(XMP)	4GB	SS	N/A	N/A	9-10-9-27	1.5V	*	*	*
AMD	AP38G1869U2K	8GB(4GB x 2)	DS	HYNIX	H5T02G B3CFR	9-10-9-27	1.5V	*	*	*
AMD	AP38G1869U2K	8GB(4GB x 2)	DS	N/A	N/A	9-10-9-27	1.5V	*	*	*
PATRIOT	PV138G186C9KPDD000326	4GB	DS	N/A	N/A	9-9-9-24-39	1.5V	*	*	*
PANRAM	PUD31866C94G2PSB	4GB	SS	N/A	Heat-Sink Package	9-10-9-27	1.65V	*	*	*
PANRAM	PUD31866C98GPSB	8GB	DS	N/A	Heat-Sink Package	9-10-9-27	1.65V	*	*	*
TEAM	TED38GM1866C13BK	8GB	DS	HYNIX	H5TQ4G 83AFY	13-13-13-31	1.5V	*	*	*
AVEXIR	AVD3U0904G-4CI	4GB	SS	N/A	N/A	11-11-11-28-39	1.65V	*	*	*
AVEXIR	AVD3U0908G-4CI	8GB	DS	N/A	N/A	11-11-11-28-39	1.5V	*	*	*
AVEXIR	AVD3U18661108G-1LW	8G	DS	HYNIX	H5TQ4G 83MFR	9-9-9-27	1.35V	*	*	*
AVEXIR	AVD3U18661104G-1LW	4G	SS	SEC 431 BYKO	K4B4G0846D	9-9-9-27	1.35V	*	*	*
MUSHKIN	PC3-14900	8GB	DS	N/A	Heat-Sink Package	11-11-11-28-39	1.5V	*	*	*
MUSHKIN	PC3L-14900	8G	DS	N/A	Heat-Sink Package	11-11-11-27	XMP 1.35V	*	*	*
EPICGEAR	YE1410-L8M280381	8G	DS	N/A	CL1L512M 088BA11Y	9-9-9-27	1.5V	*	*	*

DDR3 1600 MHz capability

Vendors	Part No.	Size	SS/ DS	Chip Brand	Chip NO.	Timing	Voltage	DIMM socket support (Optional)		
								1 DIMM	2 DIMMs	4 DIMMs
APACER	78.B1GET.9K00C	4GB	SS	APACER	AM5D6008BQSQSK	11-11-11-28-39	1.50V	*	*	*
APACER	AU04GFA60CATBGC	4GB	SS	APACER	AM5D60080QJMCK 1336F	11-11-11-28-39	1.50V	*	*	*
Apacer	78.B1GE3.9L10C	4GB	DS	Apacer KZZC	AM5D5908DEQSK	11-11-11-28-39	1.50V	*	*	*
APACER	78.BAOEJ.9LK0C(XMP)	4GB	DS	N/A	N/A	9-9-9-27	-	*	*	*
APACER	78.C1GET.9K10C	8GB	DS	APACER	AM5D6008BQSQSK	11-11-11-28-39	1.50V	*	*	*
CORSAIR	CMV4GX3M1A1600C11	4GB	SS	CORSAIR	512M8DDLGPB0 381320	9-9-9-30-39	1.50V	*	*	*
CORSAIR	CMY8GX3M2A1600C9	4GB	SS	N/A	N/A	9-9-9-24	1.50V	*	*	*
CORSAIR	CMD12GX3M6A1600C8(XMP)	12GB(6x2GB)	DS	N/A	N/A	8-8-8-24	1.65V	*	*	*
CORSAIR	CMZ32GX3M4X1600C10(XMP)	32GB(8GBx4)	DS	N/A	N/A	10-10-10-27	1.50V	*	*	*
CORSAIR	CMP4GX3M2A1600C8(XMP)	4GB(2 x 2GB)	DS	N/A	N/A	8-8-8-24	1.65V	*	*	*
CORSAIR	CMP4GX3M2A1600C9(XMP)	4GB(2 x 2GB)	DS	N/A	N/A	9-9-9-24	1.65V	*	*	*
CORSAIR	CMP4GX3M2C1600C7(XMP)	4GB(2 x 2GB)	DS	N/A	N/A	7-8-7-20	1.65V	*	*	*

(continued on the next page)

DDR3 1600 MHz capability

Vendors	Part No.	Size	SS/ DS	Chip Brand	Chip NO.	Timing	Voltage	DIMM socket support (Optional)			
								1	DIMM	2	4 DIMMs
CORSAIR	CML8GX3M2A1600C9	4GB	DS	N/A	N/A	9-9-9-24	1.50V	•	•	•	
CORSAIR	CM24GX3M1A1600C9	4GB	DS	N/A	N/A	9-9-9-24	1.50V	•	•	•	
CORSAIR	CM28GX3M2A1600C9	4GB	DS	N/A	N/A	9-9-9-24	1.50V	•	•	•	•
CORSAIR	TR3X6G1600C8D G(XMP)	6GB(3 x 2GB)	DS	N/A	N/A	8-8-8-24	1.65V	•	•	•	•
CORSAIR	TR3X6G1600C9 G(XMP)	6GB(3 x 2GB)	DS	N/A	N/A	9-9-9-24	1.65V	•	•	•	•
CORSAIR	CM28GX3M2A1600C7R(XMP)	8GB(2 x 4GB)	DS	N/A	N/A	7-8-7-20	1.50V	•	•	•	
CORSAIR	CML16GX3M2A1600C10	8GB	DS	N/A	N/A	10-10-10-27	1.50V	•	•	•	
CORSAIR	CMV8GX3M1A1600C11	8GB	DS	CORSAIR	512M8DDLGPSSBO 381311	11-11-11-30-39	1.5V	•	•	•	
CORSAIR	CMY16GX3M2A1600C9	8GB	DS	N/A	N/A	9-9-9-24	1.50V	•	•	•	
CORSAIR	CMY32GX3M4A1600C9	8GB	DS	N/A	N/A	9-9-9-24	1.50V	•	•	•	•
CORSAIR	CM28GX3M1A1600C10(XMP)	8GB	DS	N/A	N/A	10-10-10-27	1.50V	•	•	•	•
CORSAIR	CMZ16GX3M4X1600C9G	4G	SS	N/A	Heat-Sink Package	9-9-9-24	XMP 1.35V	•	•	•	
CRUCIAL	CT102464BA160B.C16FED	8GB	DS	CRUCIAL	CT512X8-160B	10-10-10-27	1.50V	•	•	•	•
CRUCIAL	BLT4G3D1608ET3LX0.16FER2	4GB	DS	N/A	Heat-Sink Package	8-8-8-24	1.35V	•	•	•	•
CRUCIAL	BLS4G3D1609ES2LX0.16FER2	4G	DS	N/A	Heat-Sink Package	9-9-9-24	1.35V	•	•	•	•
G.SKILL	F3-1600C11S-4GNT	4GB	SS	SEC 343 XYKO	K4B4GO846D	11-11-11-28	1.5V	•	•	•	•
G.SKILL	F3-12800CL9D-4GBRL(XMP)	4GB(2 x 2GB)	DS	N/A	N/A	9-9-9-24	1.5V	•	•	•	
G.SKILL	F3-12800CL7D-8GBRH(XMP)	8GB(2 x 4GB)	DS	N/A	N/A	7-9-7-24	1.6V	•	•	•	•
G.SKILL	F3-12800CL8D-8GBECO(XMP)	8GB(2 x 4GB)	DS	N/A	N/A	8-8-8-24	XMP 1.35V	•	•	•	
G.SKILL	F3-12800CL9D-8GBRL(XMP)	8GB(2 x 4GB)	DS	N/A	N/A	9-9-9-24	1.5V	•	•	•	
G.SKILL	F3-12800CL10S-8GBXL(XMP)	8GB	DS	N/A	N/A	10-10-10-30	1.50V	•	•	•	•
G.SKILL	F3-1600C11D-16G1SL	8G	DS	ELPIDA	J4208EFBG-GNL-F		1.35V	•	•	•	
G.SKILL	F3-12800CL9Q-16GBSR1	4G	DS	N/A	Heat-Sink Package	9-9-9-24	1.35V	•	•	•	•
GEIL	GET316GB1600C9QC(XMP)	16GB(4 x 4GB)	DS	N/A	N/A	9-9-9-28	1.6V	•	•	•	
GEIL	GB34GB1600C11DC(XMP)	4GB	DS	GEIL	GL1L256M88BA15GL	11-11-28-39	1.5V	•	•	•	
GEIL	GVP38GB1600C9SC(XMP)	4GB	DS	N/A	N/A	11-11-11-28	1.5V	•	•	•	•
HYNIX	HMT351U6CFFR8C-PB	4GB	DS	HYNIX	H5TQ2G83CFR PBC	11-11-11-28-39	1.50V	•	•	•	•
KINGMAX	FLGE85F-B6HYB	2GB	SS	HYNIX	H5TQ2G63FFR	9-9-9-24-33	1.5V				
KINGSTON	KHX1600C9D3P1K2/4G	4GB(2 x 2GB)	SS	N/A	N/A	-	1.5V	•	•	•	
KINGSTON	KHX1600C9D3K2/8GX(XMP)	4GB	SS	N/A	N/A	11-11-28-39	1.65V	•	•	•	•
KINGSTON	KVR16N11S8/4(low profile)	4GB	SS	KINGSTON	U317X8BRRA19	11-11-11-28-39	1.50V	•	•	•	•
KINGSTON	KHX1600C9D3K3/12GX(XMP)	12GB(3x4GB)	DS	N/A	N/A	9-9-9-27	1.65V	•	•	•	•
KINGSTON	KHX1600C9D3T1BK3/12GX(XMP)	12GB(3x4GB)	DS	N/A	N/A	9-9-9-27	1.65V	•	•	•	•
KINGSTON	KHX1600C9D3K4/16GX(XMP)	16GB(4GB x 4)	DS	N/A	N/A	9-9-9-24-33	1.65V	•	•	•	
KINGSTON	KHX1600C10D3B1K2/16G	16GB(8GBx2)	DS	N/A	N/A	9-9-9-24-33	1.5V	•	•	•	
KINGSTON	KHX16C9K2/16	16GB(8GBx2)	DS	N/A	N/A	9-9-9-24-33	1.5V	•	•	•	•
KINGSTON	KHX1600C9AD3/2G	2GB	DS	N/A	N/A	9-9-9-24-33	1.65V	•	•	•	•
KINGSTON	KHX1600C9D3X2K2/4GX(XMP)	4GB(2 x 2GB)	DS	N/A	N/A	9-9-9-27	1.65V	•	•	•	
KINGSTON	KHX1600C9D3/4G	4GB	DS	N/A	N/A	9-9-9-24-33	1.65V	•	•	•	•
KINGSTON	KVR16N11/4(low profile)	4GB	DS	KINGSTON	D2568GEROPGGBU	11-11-28-39	1.5V	•	•	•	•
KINGSTON	KHX1600C9D3T1BK3/6GX(XMP)	6GB(3 x 2GB)	DS	N/A	N/A	9-9-9-27	1.65V	•	•	•	•
KINGSTON	KHX1600C9D3P1K2/8G	8GB(2 x 4GB)	DS	N/A	N/A	9-9-9-27-39	1.5V	•	•	•	•
KINGSTON	KHX1600C9D3K2/8GX	8GB	DS	N/A	N/A	11-11-11-28-39	1.65V	•	•	•	
KINGSTON	KHX16C10B1K2/16X(XMP)	8GB	DS	N/A	N/A	9-9-9-24-33	1.5V	•	•	•	
KINGSTON	KHX16C9P1K2/16(XMP)	8GB	DS	N/A	N/A	9-9-9-27-39	1.5V	•	•	•	•
KINGSTON	KVR16N11S/4	4GB	SS	KINGSTON	D5128EC4BPGGBU		1.5V	•	•	•	•
KINGSTON	KVR16N11/4	4GB	SS	KINGSTON	D5128EC4BPGGBU		1.35V	•	•	•	•
KINGSTON	KVR16N11/8-SP	8GB	DS	KINGSTON	BJM730C3G-M		1.5V	•	•	•	•
KINGSTON	HX316C10F/4	4GB	SS	N/A	Heat-Sink Package		1.5V	•	•	•	•
KINGSTON	HX316C10F/4	8GB	DS	N/A	Heat-Sink Package		1.5V	•	•	•	•
KINGSTON	6820986	2G	SS	NANYA	NT5CC256M16CP-DI	11-11-11-28	1.35V	•			
MICRON	MT8JTF51264AZ-1G6E1	4GB	SS	MICRON	D9QBJ	11-11-11-28-39	1.50V	•	•	•	•
MICRON	MT16JTF1G64AZ-1G6E1	8GB	DS	MICRON	D9QBJ	11-11-11-28-39	1.50V	•	•	•	•
MUSHKIN	PC3-12800	4GB	DS	N/A	Heat-Sink Package	9-9-9-24	1.50V	•	•	•	•
MUSHKIN	PC3-12800	4GB	DS	N/A	Heat-Sink Package	9-9-9-24	1.50V	•	•	•	
MUSHKIN	PC3L-12800	4G	DS	N/A	Heat-Sink Package	9-9-9-24	XMP 1.35V	•	•	•	
MIRA	PLAF8L93B-GN2	8GB	DS	N/A	BJE159C3G-M	9-9-9-24	1.50V	•	•	•	•
PSC	AL9F8L93B-GN2E	4GB	SS	PSC	XHP284C3G-M	11-11-11-28-39	1.50V	•	•	•	•
PSC	ALAF8L93B-GN2E	8GB	DS	PSC	XHR425C3G-M	11-11-11-28-39	1.50V	•	•	•	•

(continued on the next page)

DDR3 1600 MHz capability

Vendors	Part No.	Size	SS/DS	Chip Brand	Chip NO.	Timing	Voltage	DIMM socket support (Optional) 1 DIMM 2 DIMMs 4 DIMMs		
TEAM	TLD38G1600HC9BK	8GB	DS	-	-	9-9-9-24	1.5V	•	•	•
TEAM	TED38G1600C11BK	8G	SS	TEAM	T3D10248HT-16		1.5V	•	•	•
TEAM	TED3L8G1600C11BK	8G	DS	TEAM	T3D5128HT-16		1.35V	•	•	•
TEAM	TED3L4G1600C11BK	4G	SS	TEAM	T3D5128HT-16		1.35V	•	•	•
ADATA	ADDU1600W4G11-B	4GB	SS	ADATA	DWND-1211A	11-11-11-28-39	1.35V	•	•	•
ADATA	N/A	4GB	SS	ADATA	3WCD-1211A EL1348V	-	-	•	•	•
ADATA	AX3U1600W4G9-DB(XMP)	8GB(2 x 4GB)	SS	N/A	N/A	9-9-9-24	1.5V	•	•	•
ADATA	AX3U1600W8G9-DB	16GB(2 x 8GB)	DS	N/A	N/A	9-9-9-24	1.5V	•	•	•
ADATA	ADDU1600W8G11-B	8GB	SS	ELPIDA	J4208EBBG-GN-F	11-11-11-28-39	1.35V	•	•	•
AMD	AE32G1609U1-U	2GB	SS	N/A	23EY4587MB6 H11503M	9-9-9-24	1.5V	•		
AMD	AE38G1609U1K	4GB	SS	N/A	N/A	9-9-9-28	1.5V	•	•	•
AMD	AE34G1609U2-U	4GB	DS	AMD	23EY4587MB6 H11503M	9-9-9-24	1.5V			
ASint	SLZ302G08-EGN1C	2GB	SS	Asint	SLZ302G08-GN1C	11-11-11-28-39	1.5V	•	•	•
Asint	SLA304G08-ENG1B	4GB	SS	Asint	304G08-GN1B1301	11-11-11-28-39	1.5V	•	•	•
Asint	SLA302G08-EGG1C(XMP)	4GB	DS	Asint	302G08-GG1C	-	1.5V-1.6V	•	•	•
Asint	SLA302G08-EGJ1C(XMP)	4GB	DS	Asint	302G08-GJ1C	-	1.5V-1.6V	•	•	•
ASint	SLA302G08-EGN1C	4GB	DS	Asint	SLA302G08-GN1C	11-11-11-28-39	1.5V	•	•	•
Asint	SLB304G08-EGJ1B	8GB	DS	N/A	N/A	11-11-11-28-39	1.5V-1.6V	•	•	•
Asint	SLB304G08-EGN1B	8GB	DS	Asint	SLB304G08-GN1B	11-11-11-28-39	1.5V	•	•	•
Asint	SLB304G08-EGN1B	8GB	DS	Asint	SLB304G08-GN1B	11-11-11-28-39	1.5V	•	•	•
Asint	SLA304G08-EGN6B	4GB	SS	ASINT	304G08-GN6B	11-11-11-28-39	1.5V	•	•	•
AVEXIR	AVD3U16000904G-4CI	4GB	SS	N/A	Heat-Sink Package		1.5V	•	•	•
AVEXIR	AVD3U16001008G-4CI	8GB	DS	N/A	Heat-Sink Package		1.5V	•	•	•
AVEXIR	AVD3U16001108G-1LW	8G	DS	HYNIX	H5TQ4G83MFR		1.35V	•	•	•
AVEXIR	AVD3U16001104G-1LW	4G	SS	SEC 431 BYKO	K4B4G0846D		1.35V	•	•	•
AVEXIR	AVD3U16001108G-1BW	8G	SS	N/A	Heat-Sink Package		1.5V	•	•	•
AVEXIR	AVD3U16001104G-1BW	4G	DS	N/A	Heat-Sink Package		1.5V	•	•	•
AVEXIR	AVD3U16001104G-1BW	4G	SS	N/A	Heat-Sink Package		1.5V	•	•	•
APOTPO	L3A4G2-16C8DA	4G	DS	APOTPO	CA32G0BE3D-13BL		1.35V	•	•	•
Elixir	M2P2G64CB8HC9N-DG(XMP)	2GB	DS	N/A	N/A	10-10-10-28-38	1.65V/1.65V	•		
Elixir	M2P2G64CB8HC9N-DG	2GB	DS	N/A	N/A	10-10-10-28-38	1.5V-1.6V	•	•	•
Elixir	M2X8G64CB8HB5N-DG(XMP)	8GB	DS	Elixir 1213	N2C84GB8OBN-DG	11-11-11-28-39	1.5V-1.65V	•	•	•
MIRAGES	KMD3U1600V4G(PC3-1200U)	4GB	SS	N/A	SEC246BCKOK4B4G0846C	11-11-11-28-39	1.5V	•		
PATRIOT	PGD316G1600ELK(XMP)	32GB(8GB x 4)	DS	N/A	N/A	9-9-9-24	1.65V	•		
PATRIOT	PV332G160C9QK	8GB	DS	N/A	N/A	9-9-9-24-39	1.5V	•	•	
PANRAM	PUD31600C114GPSB	4GB	SS	N/A	N/A	11-11-28-39	1.50V	•	•	
PANRAM	PUD31600C118GPSB	8GB	DS	N/A	N/A	11-11-28-39	1.50V	•	•	•
SANMAX	SMD-4G28N1P-16KM	4GB	SS	ELPIDA	J4208BBBG-GN-F	11-11-28-39	1.50V	•	•	•
SANMAX	SMD-4G68HP-16KZ	4GB	DS	HYNIX	H5TQ2G83BFR PBC	11-11-11-28-39	1.5V	•	•	•
SAMSUNG	M379B5273DHO-YKO 1325	4GB	DS	SEC 312 BJKO	K4B2G0846C	11-11-28-39	1.35V	•	•	•
SK HYNIX	HMT41GU6BFR8A-PB NO AA	8GB	DS	SK HYNIX	H5TC4GB3BFR	11-11-28-39	1.35V	•	•	•
SK HYNIX	HMT451U6BFR8A-PB NO AA	4GB	SS	SK HYNIX	H5TC4GB3BFR	11-11-28-39	1.35V	•	•	•
Silicon Power	SP002GBLTU160V02(XMP)	2GB	SS	S-POWER	20YT5NG-1201	11-11-11-28-39	1.5V	•	•	•
Silicon Power	SP004GLBTU160V02(XMP)	4GB	DS	S-POWER	20YT5NG-1201	11-11-11-28-39	1.50V		•	
Silicon Power	SP004GLLTU160N01	4G	SS	NANYA	NT5CB512M8CN-DI		1.35V	•	•	•
Silicon Power	SP008GLLTU160N01	8G	DS	NANYA	NT5CB512M8CN-DI		1.35V	•	•	•
Silicon Power	SP004GLLTE160N01	4G	SS	NANYA	NT5CB512M8CN-DI		1.35V	•	•	•
Silicon Power	SP008GLLTE160N01	8G	DS	NANYA	NT5CB512M8CN-DI		1.35V	•	•	
Silicon Power	SP004GLLTU160N02	4G	SS	SP	3L4085HLBE		1.35V	•		
Silicon Power	SP008GLLTU160N02	8G	DS	SP	3L4085HLBE		1.35V	•	•	•
V-COLOR	TD4G8C11-H11	4GB	SS	HYNIX	H5TQ4G83MFR	11-11-11-28-39	1.5V	•	•	•
V-COLOR	TD8G8C11-H11D	8G	SS	V-COLOR	8G8HY-16CD		1.5V	•	•	•
VENTURA	D3-55DK114SV-11	2GB	SS	SEC 404 BCKO	K4B2G0846Q	11-11-44-28-39	1.5V	•	•	•
VENTURA	D3 57DN114SV-11	4G	SS	SEC 422 HCKO	K4B4G0846Q		1.5V	•	•	•

DDR3 1333 MHz capability

Vendors	Part No.	Size	SS/DS	Chip Brand	Chip NO.	Timing	Voltage	DIMM socket support (Optional)			
								1 DIMM	2 DIMMs	4 DIMMs	
A-DATA	AD3U1333C2G9	2GB	SS	A-DATA	3CCD-1509H NA1126L	9-9-9-24-33	1.5V	*	*	*	
A-DATA	AX3U1333C2G9-BP	2GB	SS	N/A	N/A	9-9-9-24-33	1.5V	*	*	*	
Apacer	AU02GFA33C9NBGC	2GB	DS	Apacer	AM5D5808APQSBG	9-9-9-24-33	1.5V	*	*	*	
Apacer	78.B1GDE.9L10C	4GB	DS	Apacer	AM5D5908CEHSBG	9-9-9-24-33	1.5V	*	*	*	
CORSAIR	CMV4GX3M1A1333C9	4GB	SS	CORSAIR	512M8DCJGELBO 301319	9-9-9-24-33	1.50V	*	*	*	
CORSAIR	TR3X6G1333C9 G	6GB(3 x 2GB)	SS	N/A	N/A	9-9-9-24	1.50V	*			
CORSAIR	CMD24GX3M6A1333C9(XMP)	24GB(6 x 4GB)	DS	N/A	N/A	9-9-9-24	1.60V	*	*		
CORSAIR	TW3X4G1333C9D G	4GB(2 x 2GB)	DS	N/A	N/A	9-9-9-24	1.50V	*	*		
CORSAIR	CM3X4GA1333C9N2	4GB	DS	CORSAIR	256MBDCJG ELC0401136	9-9-9-24	1.5V	*	*	*	
CORSAIR	CMX4GX3M1A1333C9	4GB	DS	N/A	N/A	9-9-9-24	1.50V	*	*	*	
CORSAIR	CMV8GX3M1A1333C9	8GB	DS	CORSAIR	512M8DCJG ELAC041213	9-9-9-24-33	1.50V	*	*		
CORSAIR	CMX16GX3M2A1333C9(Ver7.21)	8GB	DS	N/A	N/A	9-9-9-24	1.50V	*	*		
G.SKILL	CMX16GX3M2A1333C9(Ver7.22)	4GB(2 x 2GB)	DS	N/A	N/A	8-8-8-8-24	XMP 1.35V	*	*		
G.SKILL	CMX16GX3M2A1333C9(Ver7.23)	8GB(2 x 4GB)	DS	N/A	N/A	7-7-7-21	1.5V	*	*	*	
G.SKILL	CMX16GX3M2A1333C9(Ver7.24)	8GB	DS	N/A	Heat-Sink Package	9-9-9-24	1.35V	*	*	*	
GEIL	CMX16GX3M2A1333C9(Ver7.25)	4GB(2 x 2GB)	DS	N/A	N/A	7-7-7-24	1.5V	*	*	*	
Hynix	CMX16GX3M2A1333C9(Ver7.26)	4GB	DS	Hynix	H5TQ2G83BFRH9C	9-9-9-24-33	1.5V	*	*	*	
KINGMAX	CMX16GX3M2A1333C9(Ver7.27)	2GB	SS	KINGMAX	KFC8FNLXF- DXX-15A	9-9-9-24-33	1.5V	*	*		
KINGMAX	CMX16GX3M2A1333C9(Ver7.28)	4GB	DS	KINGMAX	KFC8FNLXF- DXX-15A	9-9-9-24-33	1.5V	*	*	*	
KINGMAX	CMX16GX3M2A1333C9(Ver7.29)	4GB	DS	KINGMAX	KFC8FNMXF- BXX-15A	9-9-9-24-33	1.5V	*	*	*	
KINGSTON	CMX16GX3M2A1333C9(Ver7.30)	2GB	SS	Micron	IID77 D9LGK	9-9-9-24-33	1.5V	*	*	*	
KINGSTON	CMX16GX3M2A1333C9(Ver7.31)	2GB	SS	ELPIDA	J2108BCSE-DJ-F	9-9-9-24-33	1.5V	*	*		
KINGSTON	CMX16GX3M2A1333C9(Ver7.32)	4GB	DS	NANYA	NT5CC512M DDN-CG	9-9-9-24-33	1.5V	*	*		
KINGSTON	CMX16GX3M2A1333C9(Ver7.33)	4GB	DS	KINGSTON	D5128GC28PGG8U	9-9-9-24-33	1.5V	*	*	*	
KINGSTON	CMX16GX3M2A1333C9(Ver7.34)	2GB	DS	ELPIDA	J1108BFBG-DJ-F	9	1.5V	*	*		
KINGSTON	CMX16GX3M2A1333C9(Ver7.35)	2GB	DS	KINGSTON	D1288JPSFPGD9U	9-9-9-24-33	1.5V	*	*	*	
KINGSTON	CMX16GX3M2A1333C9(Ver7.36)	4GB(2 x 2GB)	DS	N/A	N/A	7	1.65V	*	*	*	
KINGSTON	CMX16GX3M2A1333C9(Ver7.37)	4GB	DS	ELPIDA	J2108BCSE-DJ-F	9-9-9-24-33	1.5V	*	*	*	
KINGSTON	CMX16GX3M2A1333C9(Ver7.38)	4GB	DS	KTC	D2568JENCNGD9U	9-9-9-24-33	1.5V	*	*	*	
KINGSTON	CMX16GX3M2A1333C9(Ver7.39)	4GB	DS	KINGSTON	D2568JENCPCGD9U	9-9-9-24-33	1.5V	*	*	*	
Micron	CMX16GX3M2A1333C9(Ver7.40)	2GB	SS	MICRON	IJM22 D9PFJ	9-9-9-24-33	1.5V	*	*	*	
Micron	CMX16GX3M2A1333C9(Ver7.41)	4GB	DS	Micron	OLD22D9LGK	9-9-9-24-33	1.5V	*	*	*	
NANYA	CMX16GX3M2A1333C9(Ver7.42)	4GB	DS	NANYA	NT5CB256M8GN- CG	9-9-9-24-33	1.5V	*	*	*	
SAMSUNG	CMX16GX3M2A1333C9(Ver7.43)	2GB	SS	SAMSUNG	K4B2G0846D	9-9-9-24-33	1.5V	*	*	*	
SAMSUNG	CMX16GX3M2A1333C9(Ver7.44)	8GB	DS	SAMSUNG	K4B4G0846A-HCH9	9-9-9-24-33	1.5V	*	*	*	
Super Talent	CMX16GX3M2A1333C9(Ver7.45)	4GB	DS	SAMSUNG	K4B2G0846C	9-9-9-24-33	1.5V	*	*	*	
Transcend	CMX16GX3M2A1333C9(Ver7.46)	2GB	SS	HYNIX	H5TQ2G83BZRH9C	9-9-9-24-33	1.5V	*	*	*	
AMD	CMX16GX3M2A1333C9(Ver7.47)	2GB	SS	AMD	23EY4587MB 3H11503M	9-9-9-24	1.5V	*	*	*	
AMD	CMX16GX3M2A1333C9(Ver7.48)	4GB	DS	AMD	23EY4587MB 3H11503M	9-9-9-24	1.5V	*	*	*	
ASint	CMX16GX3M2A1333C9(Ver7.49)	2GB	SS	Asint	SLZ302G08-DJ1C	9-9-9-24-33	1.5V	*	*	*	
Asint	CMX16GX3M2A1333C9(Ver7.50)	4GB	SS	Asint	304G08-DJ1B1301	9-9-9-24-33	1.5V	*	*	*	
Asint	CMX16GX3M2A1333C9(Ver7.51)	4GB	DS	Asint	SLA302G08-DJ1C	9-9-9-24-33	1.5V	*	*	*	
Asint	CMX16GX3M2A1333C9(Ver7.52)	8GB	DS	Asint	SLB304G08-DJ1B	9-9-9-24-33	1.5V	*	*	*	
Asint	CMX16GX3M2A1333C9(Ver7.53)	4GB	SS	ASINT	304G08-DJ6A	9-9-9-24-33	1.5V	*	*	*	
Asint	CMX16GX3M2A1333C9(Ver7.54)	4GB	SS	ASINT	304G08-DJ6B	9-9-9-24-33	1.5V	*	*	*	
Elixir	CMX16GX3M2A1333C9(Ver7.55)	2GB	SS	Elixir	N2CB2G80DN-CG	9-9-9-24-33	1.5V	*	*	*	
Elixir	CMX16GX3M2A1333C9(Ver7.56)	2GB	SS	Elixir	N2CB2G80GN-CG	9-9-9-24-33	1.5V	*	*	*	
Elixir	CMX16GX3M2A1333C9(Ver7.57)	4GB	DS	Elixir	N2CB2G80BN-CG	9-9-9-24-33	1.5V	*	*	*	
Elixir	CMX16GX3M2A1333C9(Ver7.58)	4GB	DS	Elixir	N2CB2G80DN-CG	9-9-9-24-33	1.5V	*	*	*	
HMD	CMX16GX3M2A1333C9(Ver7.59)	2GB	SS	ERTH	256X8DDR3 WT	9-9-9-24-33	1.5V	*	*	*	
HMD	CMX16GX3M2A1333C9(Ver7.60)	4GB	SS	UUK	512X8DDR3 WT	9-9-9-24-33	1.5V	*	*	*	
HMD	CMX16GX3M2A1333C9(Ver7.61)	8GB	DS	FFCT	512X8DDR3 WT	9-9-9-24-33	1.5V	*	*	*	
KINGSTEK	CMX16GX3M2A1333C9(Ver7.62)	2GB	SS	MICRON	PE911-125E	9-9-9-24-33	1.5V	*	*	*	
MARKVISION	CMX16GX3M2A1333C9(Ver7.63)	2GB	DS	MARKVISION	M3D1288P-13	9-9-9-24-33	1.50V	*	*	*	
MARKVISION	CMX16GX3M2A1333C9(Ver7.64)	4GB	DS	MARKVISION	M3D2568E-13	9-9-9-24-33	1.50V	*	*	*	
MUSHKIN	CMX16GX3M2A1333C9(Ver7.65)	4GB	SS	N/A	Heat-Sink Package	9-9-9-24	1.50V	*	*	*	

(continued on the next page)

DDR3 1333 MHz capability

Vendors	Part No.	Size	SS/ DS	Chip Brand	Chip NO.	Timing	Voltage	DIMM socket support (Optional)		
								1 DIMM	2 DIMMs	4 DIMMs
MUSHKIN	CMX16GX3M2A1333C9(Ver7.66)	2GB	SS	SEC 410 HC15	K4W2G0846P		1.50V	•	•	•
PATRIOT	CMX16GX3M2A1333C9(Ver7.67)	8GB	DS	N/A	N/A	9-9-9-24	1.5V	•	•	
RAMAXEL	CMX16GX3M2A1333C9(Ver7.68)	4GB	DS	ELPIDA	J2108BCSE-DJ-F	9-9-9-24-33	1.50V	•	•	•
RIDATA	CMX16GX3M2A1333C9(Ver7.69)	2GB	DS	RIDATA	N/A	9	1.5V	•	•	•
RIDATA	CMX16GX3M2A1333C9(Ver7.70)	4GB	DS	RIDATA	N/A	9	1.5V	•	•	
Silicon Power	CMX16GX3M2A1333C9(Ver7.71)	2GB	SS	S-POWER	20YT3NG-1202	9-9-9-24-33	1.5V	•	•	•
Silicon Power	CMX16GX3M2A1333C9(Ver7.72)	4GB	DS	S-POWER	20YT3NG-1201	9-9-9-24-33	1.5V			
Silicon Power	CMX16GX3M2A1333C9(Ver7.73)	2GB	SS	SP	3N2083EFDE1424H		1.5V	•	•	
SMART	CMX16GX3M2A1333C9(Ver7.74)	4GB	DS	SEC 343 BYKO	K4B2G08460	9-9-9-24-33	1.5V	•	•	
SMART	CMX16GX3M2A1333C9(Ver7.75)	4GB	DS	SEC 343 BYKO	K4B2G08460	9-9-9-24-33	1.5V	•	•	



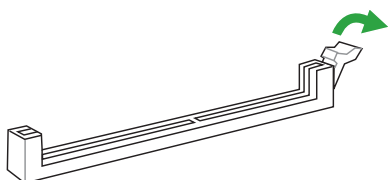
- **SS:** Single-sided / **DS:** Double-sided

DIMM support:

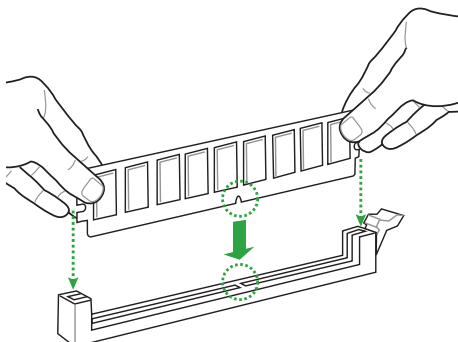
- **1 DIMM:** Supports one (1) module inserted into any slot as Single-channel memory configuration.
- **2 DIMMs:** Supports two (2) modules inserted into either the black slots or the gray slots as one pair of Dual-channel memory configuration.
- **4 DIMMs:** Supports four (4) modules inserted into both the gray and black slots as two pairs of Dual-channel memory configuration
- Visit the ASUS website at www.asus.com for the latest QVL.

1.4.3 Installing a DIMM

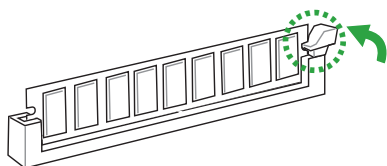
1



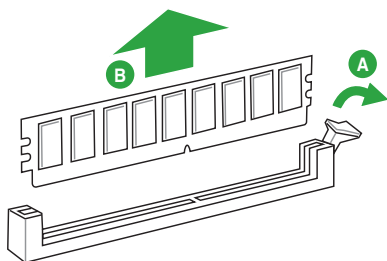
2



3



To remove a DIMM



1.5 Expansion slots

In the future, you may need to install expansion cards. The following sub-sections describe the slots and the expansion cards that they support.



Unplug the power cord before adding or removing expansion cards. Failure to do so may cause you physical injury and damage motherboard components.

1.5.1 Installing an expansion card

To install an expansion card:

1. Before installing the expansion card, read the documentation that came with it and make the necessary hardware settings for the card.
2. Remove the system unit cover (if your motherboard is already installed in a chassis).
3. Remove the bracket opposite the slot that you intend to use. Keep the screw for later use.
4. Align the card connector with the slot and press firmly until the card is completely seated on the slot.
5. Secure the card to the chassis with the screw you removed earlier.
6. Replace the system cover.

1.5.2 Configuring an expansion card

After installing the expansion card, configure it by adjusting the software settings.

1. Turn on the system and change the necessary BIOS settings, if any. See Chapter 2 for information on BIOS setup.
2. Assign an IRQ to the card.
3. Install the software drivers for the expansion card.



When using PCI cards on shared slots, ensure that the drivers support "Share IRQ" or that the cards do not need IRQ assignments. Otherwise, conflicts will arise between the two PCI groups, making the system unstable and the card inoperable.

1.5.3 PCI slots

The PCI slot supports cards such as a LAN card, SCSI card, USB card, and other cards that comply with PCI specifications.

1.5.3 PCI Express 3.0 x1 slots

This motherboard supports PCI Express x1 network cards, SCSI cards, and other cards that comply with the PCI Express specifications.

1.5.4 PCI Express 3.0 x16 slots

This motherboard has two PCI Express 3.0 x16 slot that supports PCI Express 3.0 x16 graphic cards complying with the PCI Express specifications.

VGA configuration	PCI Express operating mode	
	PCIe 3.0 x16_1 (gray)	PCIe 3.0 x16_2
Single VGA/PCIe card	x16 (Recommended for single VGA card)	N/A
Dual VGA/PCIe cards	x16	x4



- In single VGA card mode, use the PCIe 3.0 x16_1 slot (gray) for a PCI Express x16 graphics card to get better performance.
- We recommend that you provide sufficient power when running CrossFireX™ mode. See page 1-23 for details.
- Connect a chassis fan to the motherboard connector labeled CHA_FAN1/2/3 when using multiple graphics cards for better thermal environment.

Slot	PCI Express operating mode			
	Default	Auto (When x4 or faster device is installed on PCIe x16_2)	Settings provided by BIOS	
PCIe x1_2	x1	N/A	x1	N/A
PCIe x1_3	x1	N/A	x1	N/A
PCIe x16_2	x2	x4	x2	x4

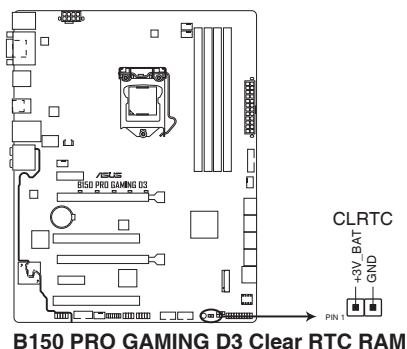
IRQ assignments for this motherboard

	A	B	C	D	E	F	G	H
I.G.D.	Shared	—	—	—	—	—	—	—
HD Audio Controller	Shared	—	—	—	—	—	—	—
XHCI Controller	Shared	—	—	—	—	—	—	—
SATA Controller	Shared	—	—	—	—	—	—	—
LAN Controller	Shared	—	—	—	—	—	—	—
PCIe x16_1	Shared	—	—	—	—	—	—	—
PCIe x16_2	Shared	—	—	—	—	—	—	—
PCIe x1_1	—	—	—	Shared	—	—	—	—
PCIe x1_2	—	—	Shared	—	—	—	—	—
Asmedia USB 3.1 Controller	—	—	—	Shared	—	—	—	—
Asmedia PICE to PCI Controller	—	—	Shared	—	—	—	—	—
M.2	Shared	—	—	—	—	—	—	—

1.6 Jumpers

1. Clear RTC RAM (2-pin CLRTC)

This header allows you to clear the Real Time Clock (RTC) RAM in CMOS. You can clear the CMOS memory of date, time, and system setup parameters by erasing the CMOS RTC RAM data. The onboard button cell battery powers the RAM data in CMOS, which include system setup information such as system passwords.



To erase the RTC RAM:

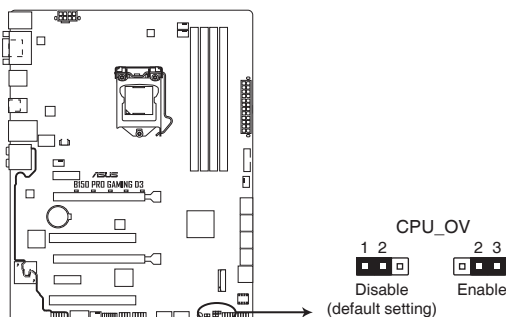
1. Turn OFF the computer and unplug the power cord.
2. Use a metal object such as a screwdriver to short the two pins.
3. Plug the power cord and turn ON the computer.
4. Hold down the key during the boot process and enter BIOS setup to re-enter data.



- If the steps above do not help, remove the onboard battery and short the two pins again to clear the CMOS RTC RAM data. After clearing the CMOS, reinstall the battery.
- You do not need to clear the RTC when the system hangs due to overclocking. For system failure due to overclocking, use the CPU Parameter Recall (C.P.R.) feature. Shut down and reboot the system, then the BIOS automatically resets parameter settings to default values.

2. CPU Over Voltage jumper (3-pin CPU_OV)

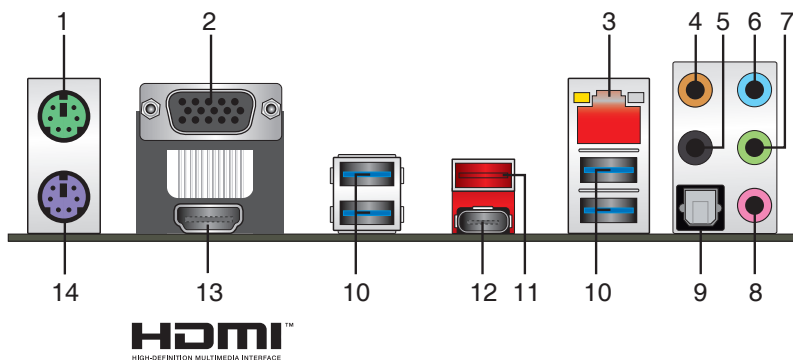
The CPU Over Voltage jumper allows you to set a higher CPU voltage for a flexible overclocking system, depending on the type of the installed CPU. To gain more CPU voltage setting, insert the jumper to pins 2-3. To go back to its default CPU voltage setting, insert the jumper to pins 1-2.



B150 PRO GAMING D3 CPU_OV setting

1.7 Connectors

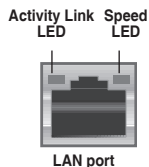
1.7.1 Rear panel connectors



1. **PS/2 mouse port (green).** This port is for a PS/2 mouse.
2. **Video Graphics Adapter (VGA) port.** This 15-pin port is for a VGA monitor or other VGA-compatible devices.
3. **LAN (RJ-45) port.** This port allows Gigabit connection to a Local Area Network (LAN) through a network hub.

LAN port LED indications

Activity/Link LED		Speed LED	
Status	Description	Status	Description
Off	No link	OFF	10 Mbps connection
Orange	Linked	ORANGE	100 Mbps connection
Orange (Blinking)	Data activity	GREEN	1 Gbps connection
Orange (Blinking then steady)	Ready to wake up from S5 mode		



- Center / Subwoofer port (orange).** This port connects the center/subwoofer speakers.
- Rear Speaker Out port (black).** This port connects the rear speakers in a 4.1 channel, 5.1 channel, or 7.1 channel audio configuration.
- Line In port (light blue).** This port connects to the tape, CD, DVD player, or other audio sources.
- Line Out port (lime).** This port connects to a headphone or a speaker. In the 4.1, 5.1, and 7.1 channel configurations, the function of this port becomes Front Speaker Out.
- Microphone port (pink).** This port connects to a microphone.

Audio 2, 4.1, 5.1, or 7.1-channel configuration

Port	Headset 2-channel	4.1-channel	5.1-channel	7.1-channel
Light Blue	Line In	Line In	Line In	Line In
Lime	Line Out	Front Speaker Out	Front Speaker Out	Front Speaker Out
Pink	Mic In	Mic In	Mic In	Mic In
Orange	—	—	Center/Subwoofer	Center/Subwoofer
Optical S/PDIF out	—	—	—	Side Speaker Out
Black	—	Rear Speaker Out	Rear Speaker Out	Rear Speaker Out

- Optical S/PDIF out port.** This port allows you to connect your PC to amplified speakers, headphones, or Sony/Phillips Digital Interconnect Format (S/PDIF) compliant devices.
- USB 3.0 ports.** These 9-pin Universal Serial Bus (USB) ports are for USB 3.0 devices.

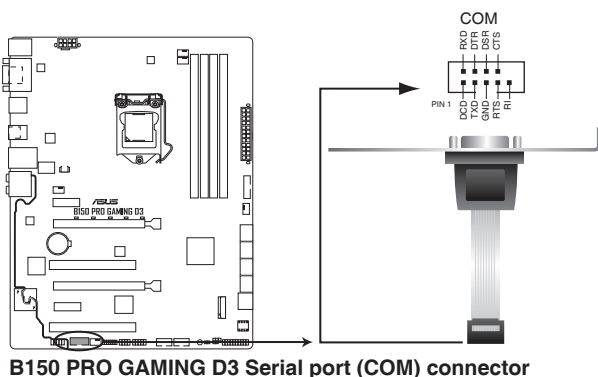
- The plugged USB 3.0 device may run on xHCI or EHCI mode, depending on the operating system's setting.
- USB 3.0 devices can only be used for data storage.
- We strongly recommend that you connect USB 3.0 devices to USB 3.0 ports for faster and better performance from your USB 3.0 devices.
- Due to the design of the Intel® 100 series chipset, all USB devices connected to the USB 2.0 and USB 3.0 ports are controlled by the xHCI controller. Some legacy USB devices must update their firmware for better compatibility.

11. **USB 3.1 Type A port.** This 9-pin Universal Serial Bus (USB) Type A port is for USB 3.1 devices.
12. **USB 3.1 Type C port.** This Universal Serial Bus (USB) Type C port is for USB 3.1 mobile or peripheral devices.
13. **HDMI port.** This port is for a High-Definition Multimedia Interface (HDMI) connector, and is HDCP compliant allowing playback of HD DVD, Blu-ray, and other protected content.
14. **PS/2 keyboard port (purple).** This port is for a PS/2 keyboard.

1.7.2 Internal connectors

1. Serial port connector (10-1 pin COM)

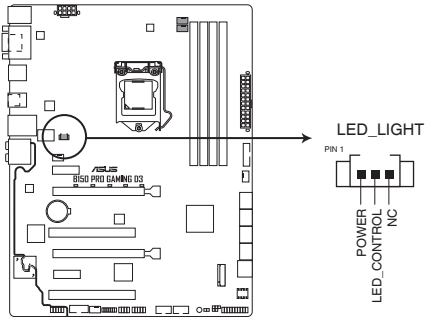
This connector is for a serial (COM) port. Connect the serial port module cable to this connector, then install the module to a slot opening at the back of the system chassis.



The COM module is purchased separately.

2. LED light connector (3-pin LED_Light)

This connector is for LED accessories.



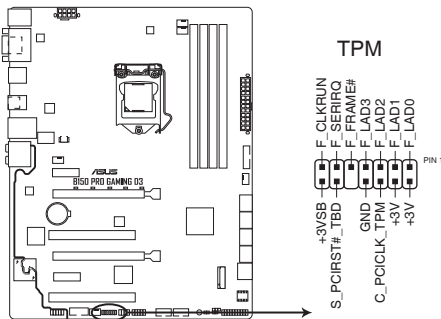
B150 PRO GAMING D3 LED_LIGHT connector



The LED accessory module is purchased separately.

3. TPM connector (14-1 pin TPM)

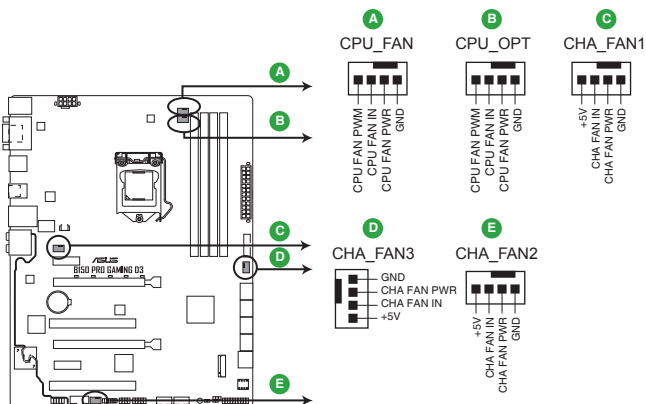
This connector supports a Trusted Platform Module (TPM) system, which securely store keys, digital certificates, passwords and data. A TPM system also helps enhance the network security, protects digital identities, and ensures platform integrity.



B150 PRO GAMING D3 TPM connector

4. CPU, CPU optional, and chassis fan connectors (4-pin CPU_FAN; 4-pin CPU_OPT; 4-pin CHA_FAN1~3)

Connect the fan cables to the fan connectors on the motherboard, ensuring that the black wire of each cable matches the ground pin of the connector.



B150 PRO GAMING D3 Fan connectors



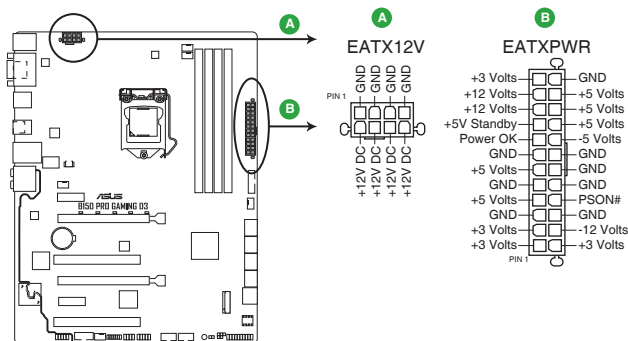
- Do not forget to connect the fan cables to the fan connectors. Insufficient air flow inside the system may damage the motherboard components. These are not jumpers! Do not place jumper caps on the fan connectors!
- Ensure that the CPU fan cable is securely installed to the CPU fan connector.



- The CPU_FAN connector supports a CPU fan of maximum 1 A (12 W) fan power.
- The CPU_FAN connector and CHA_FAN connectors support the ASUS FAN Xpert 3 feature.
- The CPU fan connector detects the type of CPU fan installed and automatically switches the control modes. To configure the CPU fan's control mode, go to **Advanced > Monitor > Q-Fan Configuration > CPU Q-Fan Control** item in BIOS.
- The chassis fan connectors support DC and PWM modes. To set these fans to DC or PWM, go to **Advanced > Monitor > Q-Fan Configuration > Chassis Fan 1/2/3 Q-Fan Control** items in BIOS.

5. **ATX power connectors (24-pin EATXPWR, 8-pin ATX12V)**

These connectors are for ATX power supply plugs. The power supply plugs are designed to fit these connectors in only one orientation. Find the proper orientation and push down firmly until the connectors completely fit.



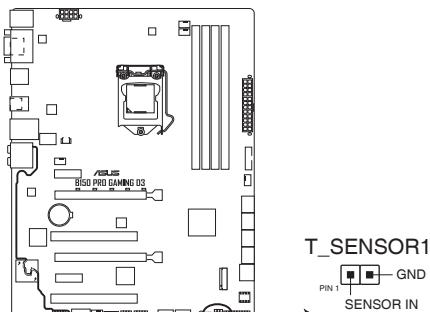
B150 PRO GAMING D3 ATX power connectors



- For a fully configured system, we recommend that you use a power supply unit (PSU) that complies with ATX 12 V Specification 2.0 (or later version) and provides a minimum power of 350 W.
- DO NOT forget to connect the 4-pin/8-pin ATX +12V power plug. Otherwise, the system will not boot up.
- We recommend that you use a PSU with higher power output when configuring a system with more power-consuming devices or when you intend to install additional devices. The system may become unstable or may not boot up if the power is inadequate.
- If you are uncertain about the minimum power supply requirement for your system, refer to the Recommended Power Supply Wattage Calculator at <http://support.asus.com/PowerSupplyCalculator/PSCalculator.aspx?SLanguage=en-us> for details.

6. Thermal sensor connector (2-pin T_SENSOR)

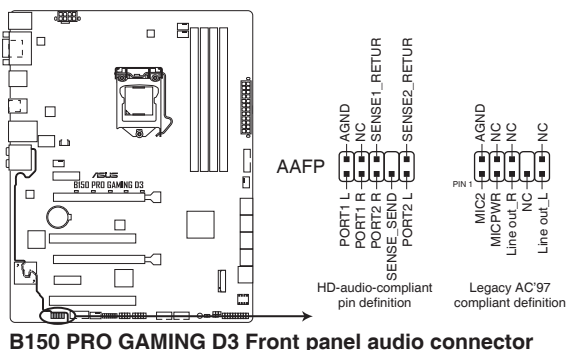
This connector is for the thermistor cable that allows you to monitor the temperature of your motherboard's critical components and connected devices.



B150 PRO GAMING D3 T_SENSOR connector

7. Front panel audio connector (10-1 pin AAFP)

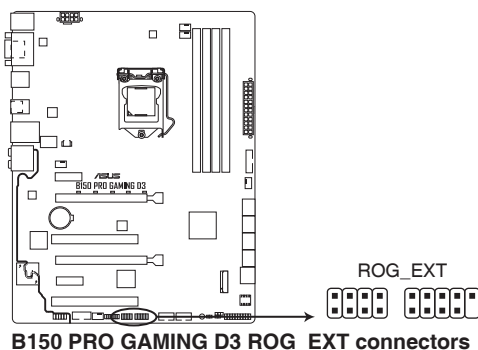
This connector is for a chassis-mounted front panel audio I/O module that supports either HD Audio or legacy AC'97 audio standard. Connect one end of the front panel audio I/O module cable to this connector.



- We recommend that you connect a high-definition front panel audio module to this connector to avail of the motherboard's high-definition audio capability.
- If you want to connect a high-definition front panel audio module to this connector, set the Front Panel Type item in the BIOS setup to [HD]. If you want to connect an AC'97 front panel audio module to this connector, set the item to [AC97]. By default, this connector is set to [HD]. See section 2.6.7 Onboard Devices Configuration for details.

8. ROG Extension - ROG_EXT connector (18-1 pin ROG_EXT)

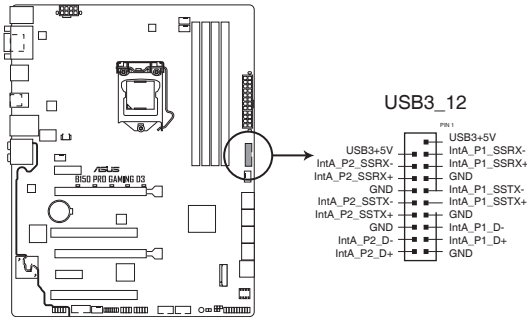
This connector is for the Front Base.



- The Front Base is purchased separately.
- Visit www.asus.com for more information about the Front Base.

9. USB 3.0 connector (20-1 pin USB3_12)

This connector allows you to connect a USB 3.0 module for additional USB 3.0 front or rear panel ports. With an installed USB 3.0 module, you can enjoy all the benefits of USB 3.0 including faster data transfer speeds of up to 5 Gbps, faster charging time for USB-chargable devices, optimized power efficiency, and backward compatibility with USB 2.0.



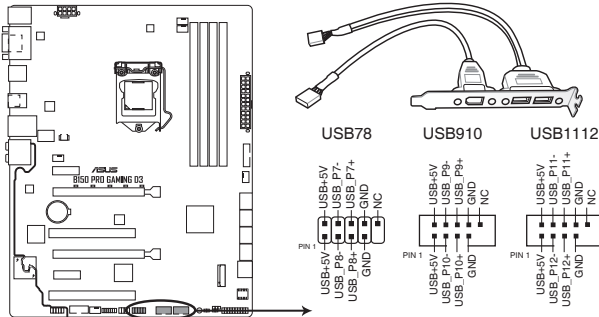
B150 PRO GAMING D3 USB3.0 Front panel connector



The USB 3.0 module is purchased separately.

10. USB 2.0 connectors (10-1 pin USB78, USB910, USB1112)

These connectors are for USB 2.0 ports. Connect the USB module cable to any of these connectors, then install the module to a slot opening at the back of the system chassis. These USB connectors comply with USB 2.0 specifications and supports up to 480Mbps connection speed.



B150 PRO GAMING D3 USB2.0 connectors



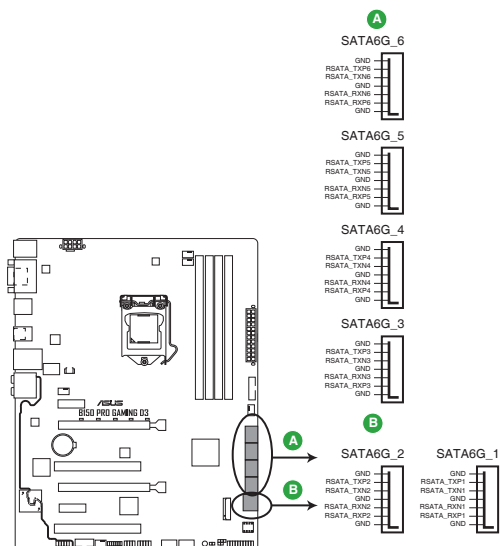
Never connect a 1394 cable to the USB connectors. Doing so will damage the motherboard!



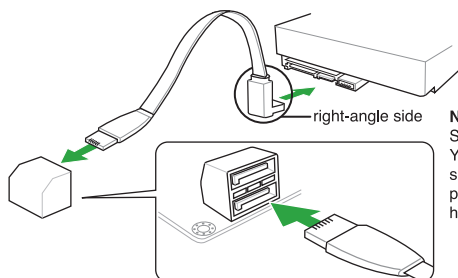
The USB 2.0 module is purchased separately.

11. Intel® B150 Serial ATA 6.0Gb/s connector (7-pin SATA6G_1-6)

This connector connects to Serial ATA 6.0 Gb/s hard disk drives via Serial ATA 6.0 Gb/s signal cables.



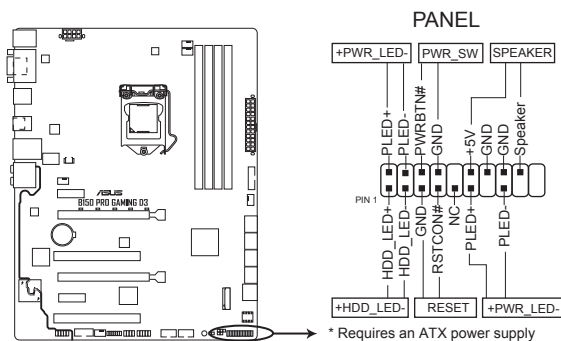
B150 PRO GAMING D3 Intel® SATA 6.0Gb/s connectors



NOTE: Connect the right-angle side of SATA signal cable to SATA device. You may also connect the right-angle side of SATA cable to the onboard SATA port to avoid mechanical conflict with huge graphics cards.

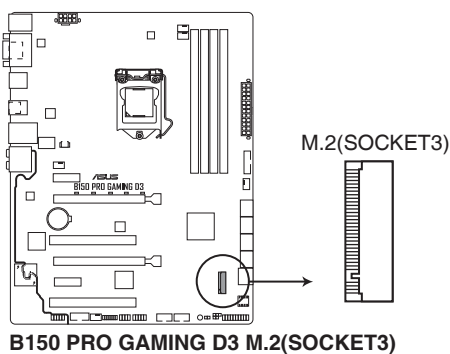
12. System panel connector (20-5 pin PANEL)

This connector supports several chassis-mounted functions.



13. M.2 socket 3

This socket allows you to install an M.2 (NGFF) SSD module.



- This socket supports M Key and 2242/2260/2280/22110 storage devices.
- When the M.2 Socket 3 is operating in SATA mode, SATA port 1 will be disabled.
- When using Intel® Desktop Responsiveness technologies with PCIe M.2 device, ensure to set up the Windows® UEFI operating system under RAID mode.

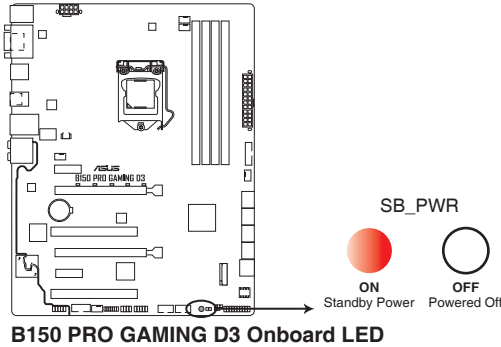


The M.2 (NGFF) SSD module is purchased separately

1.8 Onboard LED

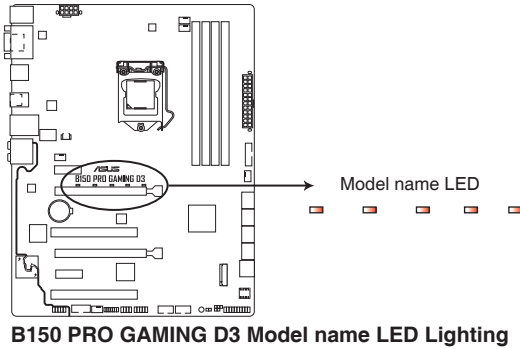
1. Standby Power LED (SB_PWR)

The motherboard comes with a standby power LED that lights up to indicate that the system is ON, in sleep mode, or in soft-off mode. This is a reminder that you should shut down the system and unplug the power cable before removing or plugging in any motherboard component. The illustration below shows the location of the onboard LED.



2. Model name LEDs

The model name LEDs are a group of five small LEDs, located right below the printed model name. The LEDs light up in the following two modes to highlight the model name.



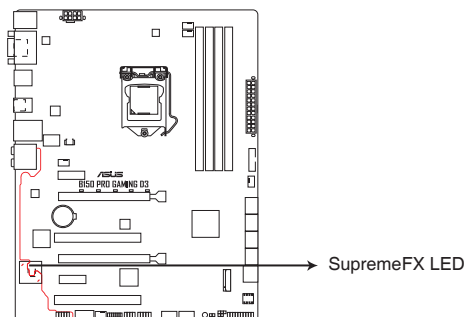
Lit mode	Description
Breathing mode	The LEDs blink intermittently.
Still mode	The LEDs become solid red.



You can turn off the model name LEDs or change the lit modes from the BIOS or the LED Control app in Ai Suite 3. To change the setting in BIOS, go to **Advanced > Onboard Devices Configuration > Model Name LED Lighting** item. See section 2.6.7 Onboard Devices Configuration for details.

3. SupremeFX LED

The SupremeFX LED lights up in the following three ways to bring you an ultimate lighting effect. This LED also outlines the separation of the audio components from the rest of your motherboard.



B150 PRO GAMING D3 SupremeFX LED Lighting

Lit mode	Description
Breathing mode	The LED blinks intermittently.
Flowing mode	The LED lights up and dims like flowing water.
Still mode	The LED becomes solid red.



You can turn off the SupremeFX LED or change the lit modes from the BIOS or the LED Control app in Ai Suite 3. To change the setting in BIOS, go to **Advanced > Onboard Devices Configuration > SupremeFX LED Lighting** item. See section **2.6.7 Onboard Devices Configuration** for details.

1.9 Software support

1.9.1 Installing an operating system

This motherboard supports Windows® 7 (32-bit / 64-bit), Windows® 8.1 (64-bit) and Windows® 10 (64-bit) Operating Systems (OS). Always install the latest OS version and corresponding updates to maximize the features of your hardware.



Motherboard settings and hardware options vary. Refer to your OS documentation for detailed information.

1.9.2 Support DVD information

The Support DVD that comes with the motherboard package contains the drivers, software applications, and utilities that you can install to avail all motherboard features.



The contents of the Support DVD are subject to change at any time without notice. Visit the ASUS website at www.asus.com for updates.

To run the Support DVD

Place the Support DVD into the optical drive. If Autorun is enabled in your computer, the DVD automatically displays the lists of the unique features of your ASUS motherboard. Click the **Driver**, **Utilities**, **Manual**, or **Special** tabs to display their respective menus.



The following screen is for reference only.

Click an icon to display a tab

Driver	Status	Available Version	Installed Version	Restart
Special Offers				
Google Chrome Browser	Not installed	38.0.2125.92	None	No
Google Toolbar	Not installed	7.5.4501.1192	None	No
Driver				
Microsoft .NET Framework	Outdated	4.5.51650	4.5.51641	No
Intel Chipset Driver	Not installed	10.1.1.7	None	No
Realtek Audio Driver	Not installed	6.0.1.7535	None	No
Intel Graphics Accelerator Driver	Not installed	10.18.15.4232	None	No
Intel LAN Driver	Not installed	20.2.3001.0	None	No
ASUS Fast Boot WOL Driver	Not installed	1.0	None	No
Management Engine Interface	Not installed	11.0.0.1144	None	No
Intel Rapid Storage Technology Driver so...	Not installed	14.5.0.1081	None	No
Intel USB 3.0 Host Controller Adaptation ...	Not installed	1.0.0.42	None	No
Asmedia USB3.1 Driver	Updated	1.16.24.0	1.16.24.0	No
APRP Utility	Not installed	1.0.030	None	No

Tick an item and click Install to install it

Click to install



If Autorun is NOT enabled in your computer, browse the contents of the Support DVD to locate the file Setup.exe in the root folder. Double-click the Setup.exe to run the DVD.

BIOS information

2

2.1 Managing and updating your BIOS

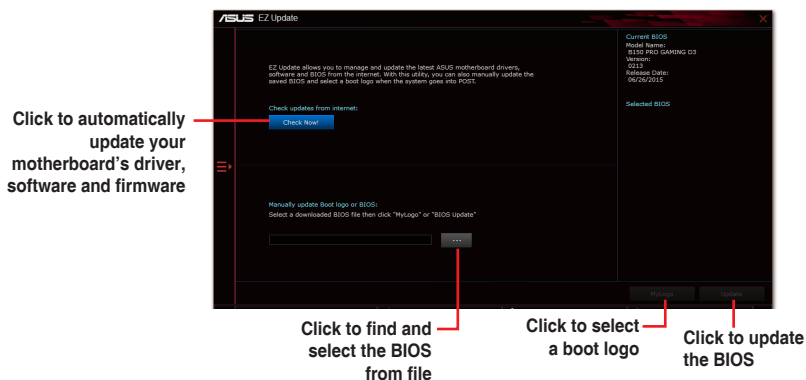


Save a copy of the original motherboard BIOS file to a USB flash disk in case you need to restore the BIOS in the future. Copy the original motherboard BIOS using the ASUS Update utility.

2.1.1 EZ Update

EZ Update is a utility that allows you to automatically update your motherboard's softwares, drivers and the BIOS version easily. With this utility, you can also manually update the saved BIOS and select a boot logo when the system goes into POST.

To launch EZ Update, click **EZ Update** on the AI Suite 3 main menu bar.



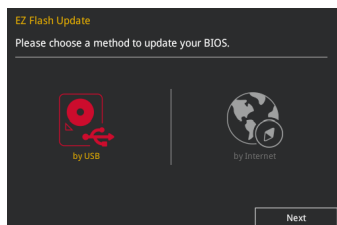
EZ Update requires an Internet connection either through a network or an ISP (Internet Service Provider).

2.1.2 ASUS EZ Flash 3

The ASUS EZ Flash 3 feature allows you to update the BIOS without using an OS-based utility.



- Ensure that you load the BIOS default settings to ensure system compatibility and stability. Select the **Load Optimized Defaults** item under the Exit menu. See section 2.10 Exit Menu for details.
- Check your Internet connection before updating the BIOS via the Internet.



To update the BIOS using EZ Flash 3:

1. Enter the **Advanced Mode** of the BIOS setup program. Go to the **Tool** menu to select **ASUS EZ Flash 3 Utility** and press <Enter> to enable it.
2. Follow the steps below to update the BIOS via USB or Internet.

Via USB

- a) Insert the USB flash disk that contains the latest BIOS file to the USB port, then select **by USB**.
- b) Press <Tab> to switch to the **Drive** field.
- c) Press the Up/Down arrow keys to find the USB flash disk that contains the latest BIOS, and then press <Enter>.
- d) Press <Tab> to switch to the **Folder Info** field.
- e) Press the Up/Down arrow keys to find the BIOS file, and then press <Enter> to perform the BIOS update process.

Via the Internet

- a) Select **by Internet**.
 - b) Press the Left/Right arrow keys to select an Internet connection method, and then press <Enter>.
 - c) Follow the onscreen instructions to complete the update.
3. Reboot the system when the update process is done.



- ASUS EZ Flash 3 supports USB devices, such as a USB flash disk, with FAT 32/16 format and single partition only.
- DO NOT shut down or reset the system while updating the BIOS to prevent system boot failure!

2.1.3 ASUS CrashFree BIOS 3 utility

The ASUS CrashFree BIOS 3 is an auto recovery tool that allows you to restore the BIOS file when it fails or gets corrupted during the updating process. You can restore a corrupted BIOS file using the motherboard support DVD or a USB flash drive that contains the updated BIOS file.



- Before using this utility, rename the BIOS file in the removable device into **B5PGD.CAP**.
- The BIOS file in the support DVD may not be the latest version. Download the latest BIOS file from the ASUS website at www.asus.com.

Recovering the BIOS

To recover the BIOS:

1. Turn on the system.
2. Insert the support DVD to the optical drive or the USB flash drive that contains the BIOS file to the USB port.
3. The utility automatically checks the devices for the BIOS file. When found, the utility reads the BIOS file and enters ASUS EZ Flash 3 utility automatically.
4. The system requires you to enter BIOS Setup to recover BIOS settings. To ensure system compatibility and stability, we recommend that you press <F5> to load default BIOS values.



DO NOT shut down or reset the system while updating the BIOS! Doing so can cause system boot failure!

2.1.4 ASUS BIOS Updater

ASUS BIOS Updater allows you to update the BIOS in DOS environment.



The screen captures used in this section are for reference only and may not be exactly the same as actually shown on your computer screen.

Before updating BIOS

- Prepare the motherboard support DVD and a USB flash drive.
- Download the latest BIOS file and BIOS Updater from <http://support.asus.com> and save them in your USB flash drive.



NTFS is not supported under FreeDOS environment. Ensure that your USB flash drive is in single partition and in FAT32/16 format.

- Turn off the computer.
- Ensure that your computer has a DVD optical drive.

Booting the system in DOS environment

To boot the system in DOS:

1. Insert the USB flash drive with the latest BIOS file and BIOS Updater to the USB port.
2. Boot your computer then press <F8> to launch the select boot device screen.
3. When the select boot device screen appears, insert the Support DVD into the optical drive then select the optical drive as the boot device.

Please select boot device:

↑ and ↓ to move selection
ENTER to select boot device
ESC to boot using defaults

P2: ST3808110AS (76319MB)
aigo miniking (250MB)
UEFI: (FAT) ASUS DRW-2014L1T(4458MB)
P1: ASUS DRW-2014L1T(4458MB)
UEFI: (FAT) aigo miniking (250MB)
Enter Setup

4. When the booting message appears, press <Enter> within five (5) seconds to enter FreeDOS prompt.

```
ISOLINUX 3.20 2006-08-26 Copyright (C) 1994-2005 H. Peter Anvin
A Bootable DVD/CD is detected. Press ENTER to boot from the DVD/CD.
If no key is pressed within 5 seconds, the system will boot next priority
device automatically. boot:
```

5. On the FreeDOS prompt, type **d:** then press <Enter> to switch the disk from Drive C (optical drive) to Drive D (USB flash drive).

```
Welcome to FreeDOS (http://www.freedos.org) !
C: /> d:
D: />
```

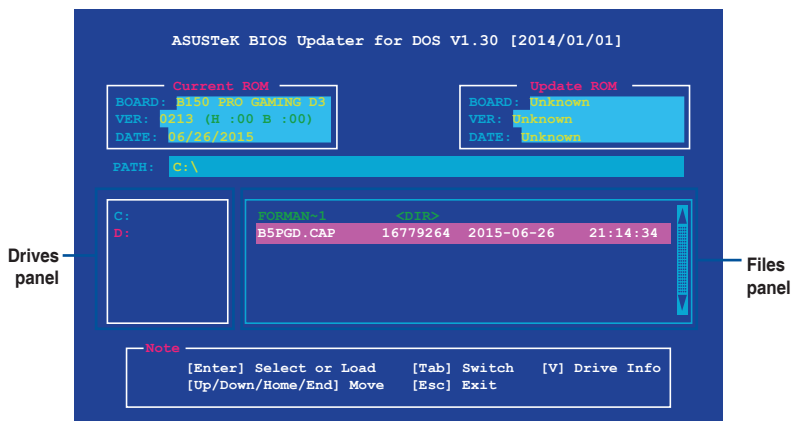
Updating the BIOS file

To update the BIOS file:

1. On the FreeDOS prompt, type **bupdater /pc /g** and press <Enter>.

```
D: /> bupdater /pc /g
```

2. On the BIOS Updater screen, press <Tab> to switch from Files panel to Drives panel then select **D:**.



3. Press <Tab> to switch from Drives panel to Files panel then press <Up/Down or Home/End> keys to select the BIOS file and press <Enter>.
4. After the BIOS Updater checks the selected BIOS file, select **Yes** to confirm the BIOS update.



The BIOS Backup feature is not supported due to security regulations.

5. Select **Yes** then press <Enter>. When BIOS update is done, press <ESC> to exit BIOS Updater.
6. Restart your computer.



DO NOT shut down or reset the system while updating the BIOS to prevent system boot failure.



Ensure to load the BIOS default settings to ensure system compatibility and stability. Select the **Load Optimized Defaults** item under the **Exit BIOS menu**. See section 2.10 **Exit Menu** for details.

2.2 BIOS setup program

Use the BIOS Setup program to update the BIOS or configure its parameters. The BIOS screens include navigation keys and brief online help to guide you in using the BIOS Setup program.

Entering BIOS Setup at startup

To enter BIOS Setup at startup:

Press <Delete> or <F2> during the Power-On Self Test (POST). If you do not press <Delete> or <F2>, POST continues with its routines.

Entering BIOS Setup after POST

To enter BIOS Setup after POST:

Press <Ctrl>+<Alt>+ simultaneously.

Press the reset button on the system chassis.

Press the power button to turn the system off then back on. Do this option only if you failed to enter BIOS Setup using the first two options.



Using the power button, reset button, or the <Ctrl>+<Alt>+ keys to force reset from a running operating system can cause damage to your data or system. We recommend you always shut down the system properly from the operating system.



- The BIOS setup screens shown in this section are for reference purposes only, and may not exactly match what you see on your screen.
 - Visit the ASUS website at www.asus.com to download the latest BIOS file for this motherboard.
 - Ensure that a USB mouse is connected to your motherboard if you want to use the mouse to control the BIOS setup program.
 - If the system becomes unstable after changing any BIOS setting, load the default settings to ensure system compatibility and stability. Select the **Load Optimized Defaults** item under the Exit menu or press hotkey F5. See section 2.10 Exit Menu for details.
 - If the system fails to boot after changing any BIOS setting, try to clear the CMOS and reset the motherboard to the default value. See section 1.6 Headers for information on how to erase the RTC RAM.
-

BIOS menu screen

The BIOS setup program can be used under two modes: **EZ Mode** and **Advanced Mode**. Press <F7> to change between the two modes.

2.2.1 EZ Mode

By default, the EZ Mode screen appears when you enter the BIOS setup program. The EZ Mode provides you an overview of the basic system information, and allows you to select the display language, system performance mode, fan profile and boot device priority. To access the Advanced Mode, click **Advanced Mode(F7)** or press <F7>.

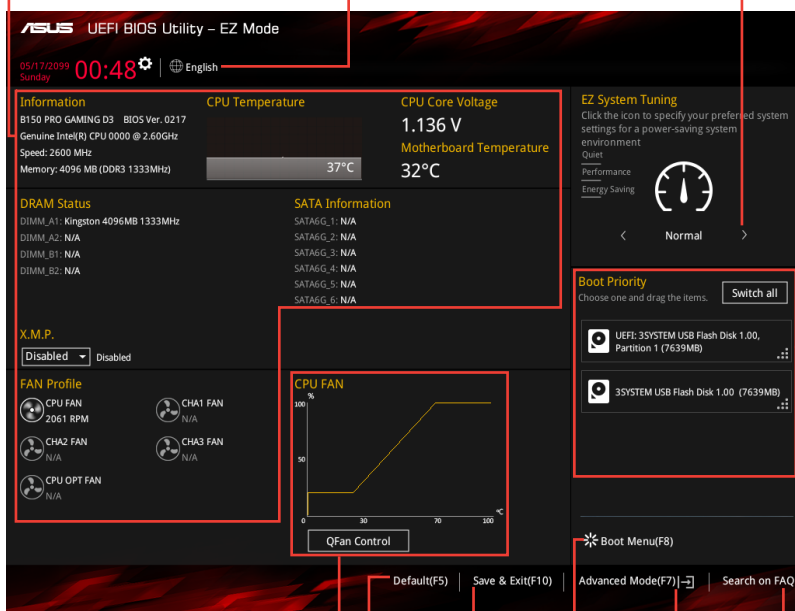


The default screen for entering the BIOS setup program can be changed. Refer to the **Setup Mode** item in section 2.8 **Boot menu** for details.

Displays the CPU/motherboard temperature, CPU voltage output, CPU/chassis fan speed, and SATA information

Selects the display language of the BIOS setup program

Displays the system properties of the selected mode. Click <Enter> to switch EZ System Tuning modes



Displays the CPU Fan's speed. Click the button to manually tune the fans

Loads optimized default settings

Saves the changes and resets the system

Shows the bootable devices

Displays the Advanced mode menus
Search on FAQs


Selects the boot device priority




The boot device options vary depending on the devices you installed to the system.

2.2.2 Advanced Mode

The Advanced Mode provides advanced options for experienced end-users to configure the BIOS settings. The figure below shows an example of the **Advanced Mode**. Refer to the following sections for the detailed configurations.



To access the EZ Mode, click **EzMode(F7)** or press <F7>.



The screenshot displays the ASUS UEFI BIOS Utility in Advanced Mode. The interface is dark-themed with red accents. At the top, a menu bar includes 'My Favorites', 'Main', 'AI Tweaker', 'Advanced', 'Monitor', 'Boot', 'Tool', and 'Exit'. The 'AI Tweaker' tab is active, showing various overclocking and power management settings. On the right, a 'Hardware Monitor' panel displays real-time data for the CPU and memory. Red lines and labels identify key UI elements: 'Menu bar' points to the top navigation; 'Language' points to the language selector; 'MyFavorite' points to the favorites icon; 'Q-Fan control' points to the fan control icon; 'Quick Note' points to the help icon; 'Hot Keys' points to the hotkey icon; 'Sub-menu item' points to the left-hand category list; 'General help' points to the bottom status bar; 'Configuration fields' points to the central settings area; 'Scroll bar' points to the vertical scrollbar on the right; 'Last modified settings' points to the 'Last Modified' label; 'Goes back to EZ Mode' points to the 'EzMode(F7)' button; and 'Displays the CPU/motherboard temperature, CPU and memory voltage output' points to the 'Hardware Monitor' panel.

Menu bar

Language

MyFavorite

Q-Fan control

Quick Note

Hot Keys

Sub-menu item

General help

Configuration fields

Scroll bar

Last modified settings

Goes back to EZ Mode

Displays the CPU/motherboard temperature, CPU and memory voltage output

Menu bar

The menu bar on top of the screen has the following main items:

My Favorites	For saving the frequently-used system settings and configuration
Main	For changing the basic system configuration
Ai Tweaker	For changing the overclocking settings
Advanced	For changing the advanced system settings
Monitor	For displaying the system temperature, power status, and changing the fan settings
Boot	For changing the system boot configuration
Tool	For configuring options for special functions
Exit	For selecting the exit options and loading default settings

Menu items

The highlighted item on the menu bar displays the specific items for that menu. For example, selecting **Main** shows the Main menu items.

The other items (My Favorites, Ai Tweaker, Advanced, Monitor, Boot, Tool, and Exit) on the menu bar have their respective menu items.

Submenu items

A greater than sign (>) before each item on any menu screen means that the item has a submenu. To display the submenu, select the item and press <Enter>.

Language

This button above the menu bar contains the languages that you can select for your BIOS. Click this button to select the language that you want to display in your BIOS screen.

MyFavorites (F3)

This button above the menu bar shows all BIOS items in a Tree Map setup. Select frequently-used BIOS settings and save it to MyFavorites menu.



Refer to section **2.3 My Favorites** for more information.

Q-Fan Control (F6)

This button above the menu bar displays the current settings of your fans. Use this button to manually tweak the fans to your desired settings.



Refer to section **2.2.3 QFan Control** for more information.

Quick Note (F9)

This button above the menu bar allows you to key in notes of the activities that you have done in BIOS.



- The Quick Note function does not support the following keyboard functions: delete, cut, copy and paste.
- You can only use the alphanumeric characters to enter your notes.

Hot keys

This button above the menu bar contains the navigation keys for the BIOS setup program. Use the navigation keys to select items in the menu and change the settings.

Search on FAQ

Move your mouse over this button to show a QR code. Scan this QR code with your mobile device to connect to the ASUS BIOS FAQ web page. You can also scan the QR code below.



Scroll bar

A scroll bar appears on the right side of a menu screen when there are items that do not fit on the screen. Press the Up/Down arrow keys or <Page Up> / <Page Down> keys to display the other items on the screen.

General help

At the bottom left corner of the menu screen is a brief description of the selected item. Use <F12> key to capture the BIOS screen and save it to the removable storage device.

Configuration fields

These fields show the values for the menu items. If an item is user-configurable, you can change the value of the field opposite the item. You cannot select an item that is not user-configurable.

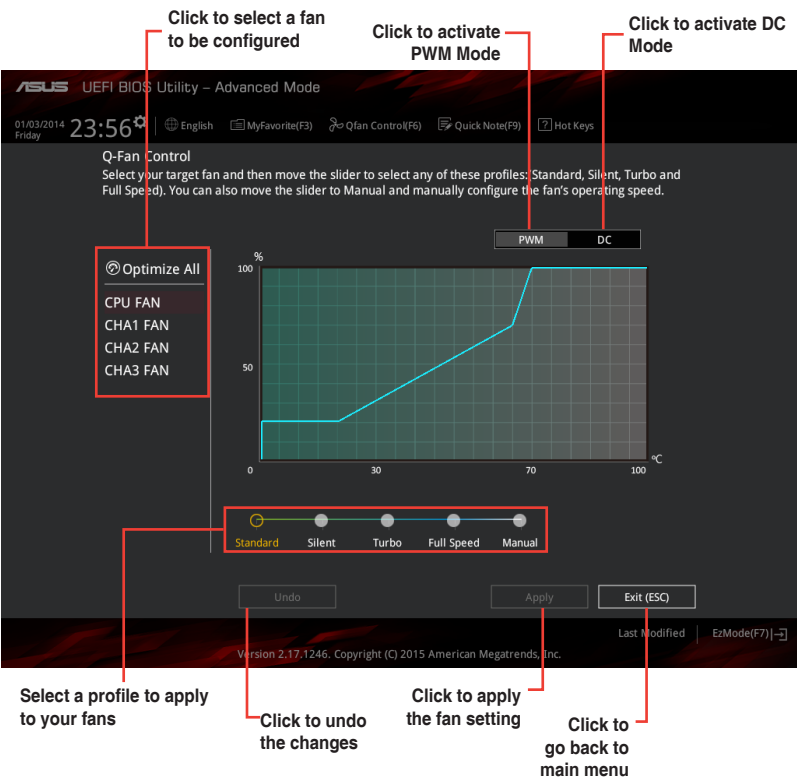
A configurable field is highlighted when selected. To change the value of a field, select it and press <Enter> to display a list of options.

Last Modified button

This button shows the items that you last modified and saved in BIOS Setup.

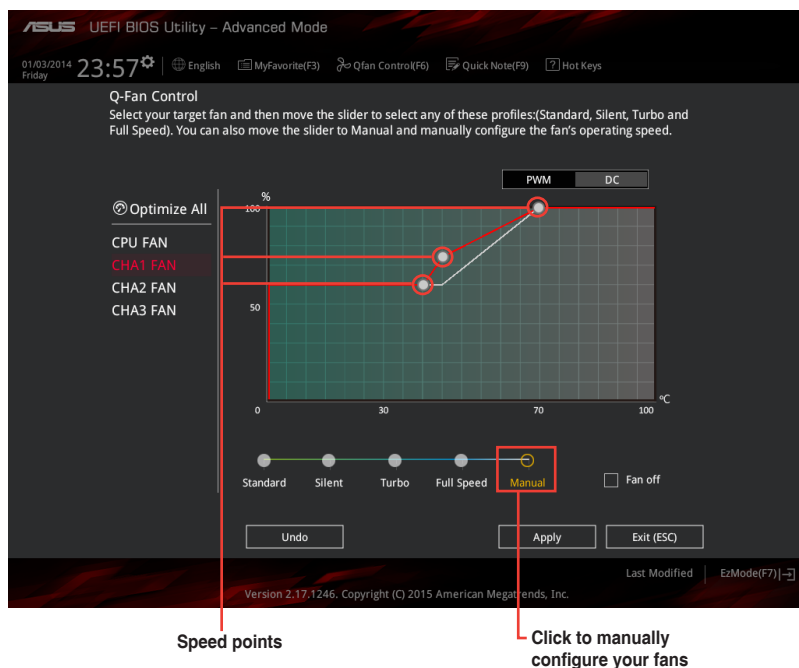
2.2.3 QFan Control

The QFan Control allows you to set a fan profile or manually configure the operating speed of your CPU and chassis fans.



Configuring fans manually

Select **Manual** from the list of profiles to manually configure your fans' operating speed.

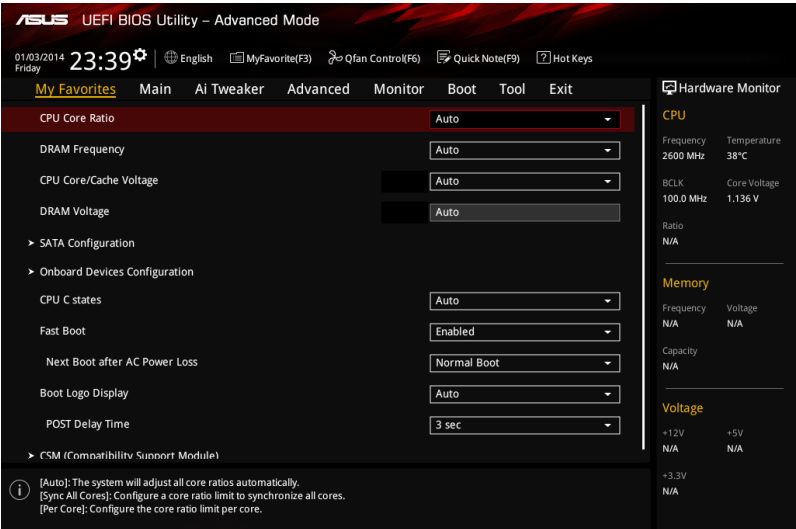


To configure your fans:

1. Select the fan that you want to configure and to view its current status.
2. Click and drag the speed points to adjust the fans' operating speed.
3. Click **Apply** to save the changes then click **Exit (ESC)**.

2.3 My Favorites

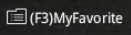
MyFavorites is your personal space where you can easily save and access your favorite BIOS items.

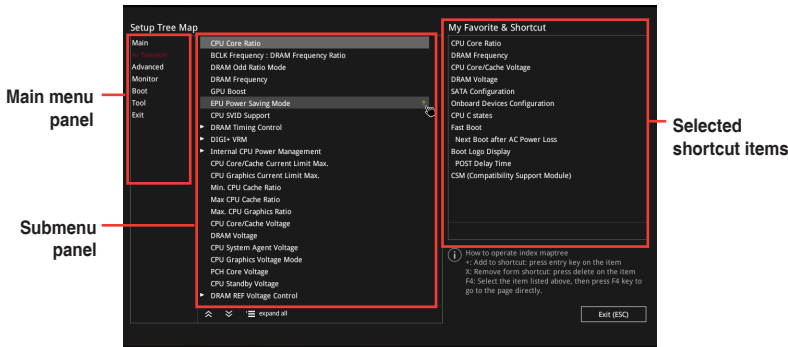


My Favorites comes with several performance, power saving, and fast boot related items by default. You can personalize this screen by adding or removing items.

Adding items to My Favorites

To add BIOS items:

1. Press <F3> on your keyboard or click  from the BIOS screen to open Setup Tree Map screen.
2. On the Setup Tree Map screen, select the BIOS items that you want to save in MyFavorites screen.



3. Select an item from main menu panel, then click the submenu that you want to save as favorite from the submenu panel and click **+**.



You cannot add the following items to My Favorite items:

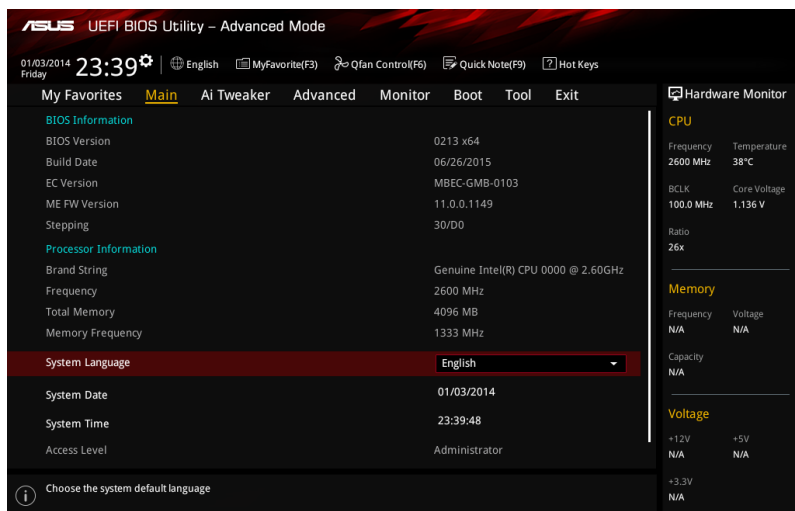
- User-managed items such as language and boot order

4. Click **Exit (ESC)** or press <esc> key to close Setup Tree Map screen.

5. Go to My Favorites menu to view the saved BIOS items.

2.4 Main menu

The Main menu screen appears when you enter the Advanced Mode of the BIOS Setup program. The Main menu provides you an overview of the basic system information, and allows you to set the system date, time, language, and security settings.



2.4.1 Language [English]

Allows you to choose the BIOS language version from the options. Configuration options: [English] [Français] [简体中文] [繁體中文] [日本語] [Deutsch] [Español] [Русский] [Korean]

2.4.2 Security

The Security menu items allow you to change the system security settings.



- If you have forgotten your BIOS password, erase the CMOS Real Time Clock (RTC) RAM to clear the BIOS password. See section 1.6 Headers for information on how to erase the RTC RAM.
- The **Administrator** or **User Password** items on top of the screen show the default **Not Installed**. After you set a password, these items show **Installed**.

Administrator Password

If you have set an administrator password, we recommend that you enter the administrator password for accessing the system.

To set an administrator password:

1. Select the **Administrator Password** item and press <Enter>.
2. From the **Create New Password** box, key in a password, then press <Enter>.
3. From the **Confirm New Password** box, key in your password again to confirm the password, then click **OK**.

To change an administrator password:

1. Select the **Administrator Password** item and press <Enter>.
2. From the **Enter Current Password** box, key in the current password, then press <Enter>.
3. From the **Create New Password** box, key in a new password, then press <Enter>.
4. From the **Confirm New Password** box, key in your password again to confirm the password, then click **OK**.

To clear the administrator password, follow the same steps as in changing an administrator password, but click **OK** when prompted to create/confirm the password. After you clear the password, the **Administrator Password** item on top of the screen shows **Not Installed**.

User Password

If you have set a user password, you must enter the user password for accessing the system. The **User Password** item on top of the screen shows the default **Not Installed**. After you set a password, this item shows **Installed**.

To set a user password:

1. Select the **User Password** item and press <Enter>.
2. From the **Create New Password** box, key in a password, then press <Enter>.
3. From the **Confirm New Password** box, key in your password again to confirm the password, then click **OK**.

To change a user password:

1. Select the **User Password** item and press <Enter>.
2. From the **Enter Current Password** box, key in the current password, then press <Enter>.
3. From the **Create New Password** box, key in a new password, then press <Enter>.
4. From the **Confirm New Password** box, key in your password again to confirm the password, then click **OK**.

To clear the user password, follow the same steps as in changing a user password, but click **OK** when prompted to create/confirm the password. After you clear the password, the **User Password** item on top of the screen shows **Not Installed**.

2.5 Ai Tweaker menu

The Ai Tweaker menu items allow you to configure overclocking-related items.

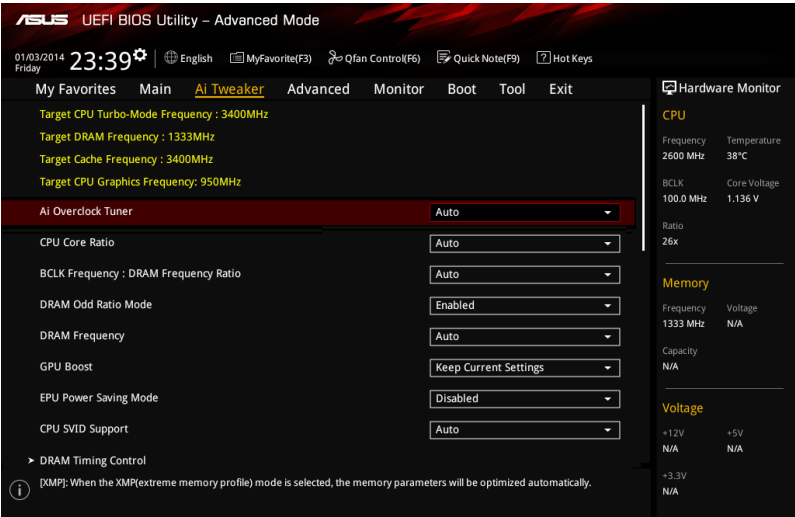


Be cautious when changing the settings of the Ai Tweaker menu items. Incorrect field values can cause the system to malfunction.



The configuration options for this section vary depending on the CPU and DIMM model you installed on the motherboard.

Scroll down to display other BIOS items.



2.5.1 Ai Overclock Tuner [Auto]

Allows you to select the CPU overclocking options to achieve the desired CPU internal frequency. Select either of these preset overclocking configuration options:

- [Auto] Loads the optimal settings for the system.
- [XMP] If you install memory modules supporting the eXtreme Memory Profile (X.M.P.) technology, choose this item to set the profiles supported by your memory modules for optimizing the system performance.



The Ai Overclocking Tuner item only appears when you install a memory module supporting the X.M.P. technology.

XMP DDR3-xxxx x-x-x-xx-xx-x.xxV [Profile #1]

This item appears only when you set the Ai Overclocking Tuner item to [XMP] and allows you to select the X.M.P. mode supported by your memory module. Configuration options: [Profile #1] [Profile #2]

2.5.2 CPU Core Ratio [Auto]

This item allows you to set the CPU core ratio limit per core or synchronize automatically to all cores. Configuration options: [Auto] [Sync All Cores] [Per Core]



When the CPU Core Ratio is set to **[Sync All Cores]** or **[Per Core]**, the following items appear.

1-Core Ratio Limit [Auto]

Select **[Auto]** to apply the CPU default Turbo Ratio setting or manually assign a 1-Core Limit value that must be higher than or equal to the 2-Core Ratio Limit.

2-Core Ratio Limit [Auto]

Select **[Auto]** to apply the CPU default Turbo Ratio setting or manually assign a 2-Core Limit value that must be higher than or equal to the 3-Core Ratio Limit.



If you assign a value for 2-Core Ratio Limit, do not set the 1-Core Ratio Limit to **[Auto]**.

3-Core Ratio Limit [Auto]

Select **[Auto]** to apply the CPU default Turbo Ratio setting or manually assign a 3-Core Limit value that must be higher than or equal to the 4-Core Ratio Limit.



If you assign a value for 3-Core Ratio Limit, do not set the 1-Core Ratio Limit and 2-Core Ratio Limit to **[Auto]**.

4-Core Ratio Limit [Auto]

Select **[Auto]** to apply the CPU default Turbo Ratio setting or manually assign a 4-Core Limit value that must be higher than or equal to the 3-Core Ratio Limit.



If you assign a value for 4-Core Ratio Limit, do not set the 1-Core Ratio Limit, 2-Core Ratio Limit, and 3-Core Ratio to **[Auto]**.

2.5.3 BCLK Frequency: DRAM Frequency Ratio [Auto]

Allows you to set the CPU bus speed to DRAM speed ratio mode.

- | | |
|-----------|---|
| [Auto] | DRAM speed is set to the optimized settings. |
| [100:133] | The BCLK frequency to DRAM speed ratio is set to 100:133. |
| [100:100] | The BCLK frequency to DRAM speed ratio is set to 100:100. |

2.5.4 DRAM Odd Ratio Mode [Enabled]

Enable Odd Ratio Mode to provide better granularity. Configuration options: [Disabled] [Enabled]

2.5.5 DRAM Frequency [Auto]

This item allows you to set the memory operating frequency. The configurable options vary with the BCLK (base clock) frequency setting. Select the auto mode to apply the optimized setting. Configuration options: [DDR3-800MHz] [DDR3-933MHz] [DDR3-1066MHz] [DDR3-1200MHz] [DDR3-1333MHz] [DDR3-1400MHz] [DDR3-1500MHz] [DDR3-1600MHz] [DDR3-1700MHz] [DDR3-1733MHz] [DDR3-1800MHz] [DDR3-1866MHz] [DDR3-1900MHz] [DDR3-2000MHz] [DDR3-2100MHz] [DDR3-2133MHz] [DDR3-2200MHz] [DDR3-2266MHz] [DDR3-2300MHz] [DDR3-2400MHz] [DDR3-2500MHz] [DDR3-2533MHz] [DDR3-2600MHz] [DDR3-2666MHz] [DDR3-2700MHz] [DDR3-2800MHz] [DDR3-2900MHz] [DDR3-2933MHz] [DDR3-3000MHz] [DDR3-3066MHz] [DDR3-3100MHz] [DDR3-3200MHz] [DDR3-3333MHz] [DDR3-3466MHz] [DDR3-3600MHz] [DDR3-3733MHz] [DDR3-3866MHz] [DDR3-4000MHz] [DDR3-4133MHz] [DDR3-4266MHz]



Selecting a very high memory frequency may cause the system to become unstable! If this happens, revert to the default setting.

2.5.6 GPU Boost [Keep Current Settings]

Enable this item to accelerate the integrated GPU for extreme graphics performance. Configuration options: [Keep Current Settings] [Enabled]

2.5.7 EPU Power Saving Mode [Disabled]

ASUS EPU (Energy Processing Unit) sets the CPU in its minimum power consumption settings. Enable this item to set lower CPU VCCIN and Vcore voltages and achieve the best energy saving condition. Configuration options: [Disabled] [Enabled]

2.5.8 CPU SVID Support [Auto]

Disabling SVID Support stops the processor from communicating with the external voltage regulator. Configuration options: [Auto] [Disabled] [Enabled]

2.5.9 DRAM Timing Control

The subitems in this menu allow you to set the DRAM timing control features. Use the <+> and <-> keys to adjust the value. To restore the default setting, type [auto] using the keyboard and press the <Enter> key.



Changing the values in this menu may cause the system to become unstable! If this happens, revert to the default settings.

2.5.10 DIGI+ VRM

CPU Load-Line Calibration [Auto]

Load-line is defined by Intel VRM specification and affects the CPU power voltage. The CPU working voltage will decrease proportionally depending on the CPU loading. Higher levels of the load-line calibration can get a higher voltage and a better overclocking performance but increases the CPU and VRM thermal. Select from level 1 to 7 to adjust the CPU power voltage from 0% to 100%. Configuration options: [Auto] [Level 1] [Level 2] [Level 3] [Level 4] [Level 5] [Level 6] [Level 7]



The boosted performance may vary depending on the CPU specification. Do not remove the thermal module.

CPU Current Capability [Auto]

Allows you to configure the total power range, and extends the overclocking frequency range simultaneously. Configuration options: [Auto] [100%] [110%] [120%] [130%] [140%]



Choose a higher value when overclocking, or under a high CPU loading for extra power support.

CPU VRM Switching Frequency [Auto]

This item affects the VRM transient response speed and the component thermal production. Select [Manual] to configure a higher frequency for a quicker transient response speed. Configuration options: [Auto] [Manual]



DO NOT remove the thermal module. The thermal conditions should be monitored.



The following item appears only when you set the CPU VRM Switching Frequency to [Manual].

Fixed CPU VRM Switching Frequency (KHz) [300]

This item allows you to set a higher frequency for a quicker transient response speed. Use the <+> and <-> keys to adjust the value. The values range from 250KHz to 500KHz with a 50KHz interval.

CPU Power Duty Control [T.Probe]

DIGI + VRM Duty control adjusts the current and thermal conditions of every component's phase.

[T. Probe] Select to maintain the VRM thermal balance.

[Extreme] Select to maintain the current VRM balance.

CPU Power Phase Control [Auto]

This item allows you to set the power phase control of the CPU. Configuration options: [Auto] [Standard] [Optimized] [Extreme]



DO NOT remove the thermal module when setting this item to [Extreme]. The thermal conditions should be monitored.

CPU Graphics Load-Line Calibration [Auto]

Load-line is defined by Intel VRM specification and affects the GT power voltage. The GT working voltage will decrease proportionally depending on the GT loading. Higher levels of the load-line calibration can get a higher voltage and a better overclocking performance but increases the GT and VRM thermal. Select from level 1 to 7 to adjust the GT power voltage from 0% to 100%. Configuration options: [Auto] [Level 1] [Level 2] [Level 3] [Level 4] [Level 5] [Level 6] [Level 7]



The boosted performance may vary depending on the GT specification. Do not remove the thermal module.

CPU Graphics Current Capability [Auto]

Allows you to configure the total power range, and extends the overclocking frequency range simultaneously. Configuration options: [Auto] [100%] [110%] [120%] [130%] [140%]



Choose a higher value when overclocking, or under a high GT loading for extra power support.

CPU Graphics Switching Frequency [Auto]

This item affects the GT transient response speed and the component thermal production. Select [Manual] to configure a higher frequency for a quicker transient response speed. Configuration options: [Auto] [Manual]



DO NOT remove the thermal module. The thermal conditions should be monitored.



The following item appears only when you set the GT VRM Switching Frequency to [Manual].

Fixed CPU Graphics Switching Frequency (KHz) [300]

This item allows you to set a higher frequency for a quicker transient response speed. Use the <+> and <-> keys to adjust the value. The values range from 250KHz to 500KHz with a 50KHz interval.

CPU Graphics Power Phase Control [Auto]

This item allows you to set the power phase control of GT. Configuration options: [Auto] [Standard] [Optimized] [Extreme]



DO NOT remove the thermal module when setting this item to [Extreme]. The thermal conditions should be monitored.

2.5.11 Internal CPU Power Management

The subitems in this menu allow you to set the CPU ratio and their features.

Intel® SpeedStep™ [Enabled]

This item allows the operating system to dynamically adjust the processor voltage and cores frequency, resulting to a decreased average power consumption and decreased average heat production. Configuration options: [Disabled] [Enabled]

Turbo Mode [Enabled]

This item allows you to enable your core processor's speed to run faster than the base operating frequency when it is below operating power, current and temperature specification limit. Configuration options: [Disabled] [Enabled]



The following items appear only when you set the Turbo Mode to [Enabled].

Turbo Mode Parameters

Long Duration Package Power Limit [Auto]

Allows you to limit the Turbo Ratio's time duration that exceeds the TDP (Thermal Design Power) for maximum performance. Use the <+> or <-> keys to adjust the value. The values range from 1 W to 4095 W.

Package Power Time Window [Auto]

Also known as Power Limit 1, this item allows you to maintain the time window for Turbo Ratio over TDP (Thermal Design Power). Use the <+> or <-> keys to adjust the value. The values range from 1 to 127 in seconds.

Short Duration Package Power Limit [Auto]

Also known as Power Limit 2, this item allows you to provide rapid protection when the package power exceeds the Power Limit 1. Use the <+> or <-> keys to adjust the value. The values range from 1 W to 4095 W.

IA AC Load Line [Auto]

This item allows you to set the AC loadline defined in 1/100 mOhms. Use the <+> and <-> keys to adjust the value. Configuration options: [Auto] [0.01] - [62.49]

IA DC Load Line [Auto]

This item allows you to set the DC loadline defined in 1/100 mOhms. Use the <+> and <-> keys to adjust the value. Configuration options: [Auto] [0.01] - [62.49]

2.5.12 CPU Core/Cache Current Limit Max. [Auto]

Allows you to set a higher current limit to prevent a frequency or power throttling when overclocking. Use the <+> or <-> keys to adjust the value. The values range from 0.00A to 255.50A with a 0.25A interval.

2.5.13 CPU Graphics Current Limit Max. [Auto]

Allows you to set a higher current limit to prevent a frequency or power throttling when overclocking. Use the <+> or <-> keys to adjust the value. The values range from 0.00A to 255.50A with a 0.25A interval.

2.5.14 Min. CPU Cache Ratio [Auto]

Allows you to set the minimum possible CPU cache ratio. Use the <+> or <-> keys to adjust the value. The values range from 8 to 83 with a 1 interval.

2.5.15 Max. CPU Cache Ratio [Auto]

Allows you to set the maximum possible CPU cache ratio. Use the <+> or <-> keys to adjust the value. The values range from 8 to 83 with a 1 interval.

2.5.16 Max. CPU Graphics Ratio [Auto]

Allows you to set the maximum possible CPU graphics ratio. Use the <+> or <-> keys to adjust the value. The values range from 1 to 60 with a 1 interval.

2.5.17 CPU Core/Cache Voltage [Auto]

This item allows you to configure the amount of voltage fed to the CPU cores. Increase the voltage when setting a high Core Frequency value. Configuration options: [Auto] [Manual Mode] [Offset Mode]



The following item appears only when you set the CPU Core Voltage to **[Manual Mode]**.

CPU Core Voltage Override [Auto]

Allows you to set the input voltage for the CPU by the external voltage regulator. Use the <+> or <-> keys to adjust the value. The values range from 0.600V to 1.700V with a 0.005V interval.



The following items appear only when you set the CPU Core Voltage to **[Offset Mode]**.

Offset Mode Sign [+]

- [+] To offset the voltage by a positive value.
- [-] To offset the voltage by a negative value.

CPU Core Voltage Offset [Auto]

Use the <+> or <-> keys to adjust the value. The values range from -0.635V to +0.635V with a 0.005V interval.

2.5.18 DRAM Voltage [Auto]

This item allows you to set the voltage for the DRAM. Use the <+> and <-> keys to adjust the value. The values range from 1.000V to 1.800V with a 0.005 interval.

2.5.19 CPU System Agent Voltage [Auto]

This item allows you to set the voltage for the CPU System Agent. Use the <+> and <-> keys to adjust the value. The values range from 0.700V to 1.685V with a 0.005V interval.

2.5.20 CPU Graphics Voltage Mode [Auto]

This item allows you to configure the mode of voltage fed to the CPU Graphics Voltage. Manual mode allows user-defined values. Offset mode modifies values by SVID. Configuration options: [Auto] [Manual Mode] [Offset Mode]



The following item appears only when you set the CPU Graphics Voltage Mode to **[Manual Mode]**.

CPU Graphics Voltage Override [Auto]

This item allows you to configure the CPU Graphics Voltage Override. Use the <+> or <-> keys to adjust the value. The values range from 0.600V to 1.700V with a 0.005V interval.



The following item appears only when you set the CPU Core Voltage Mode to **[Offset Mode]**.

Offset Mode Sign [+]

- [+] To offset the voltage by a positive value.
- [-] To offset the voltage by a negative value.

CPU Graphics Voltage Offset [Auto]

This item allows you to configure the CPU Graphics Voltage Offset. Use the <+> or <-> keys to adjust the value. The values range from 0.005V to 0.635V with a 0.005V interval.

2.5.21 PCH Core Voltage [Auto]

This item allows you to set the PCH core voltage. Use the <+> and <-> keys to adjust the value. The values range from 0.800V to 1.635V with a 0.005V interval.

2.5.22 CPU Standby Voltage [Auto]

This item allows you to set the voltage for the CPU Standby. Use the <+> and <-> keys to adjust the value. The values range from 0.800V to 1.635V with a 0.01V interval.

2.5.23 DRAM REF Voltage Control

DRAM CTRL REF Voltage [Auto]

Allows you to set the DRAM reference voltage on the control lines. You can use the <+> or <-> keys to adjust the value. The values range from 0.39500V to 0.63000V with a 0.00500V interval.

DRAM DATA REF Voltage on CHA [Auto]

Allows you to set the DRAM reference voltage on the data lines of channel A. You can use the <+> or <-> keys to adjust the value. The values range from 0.39500V to 0.63000V with a 0.00500V interval.

DRAM DATA REF Voltage on CHB [Auto]

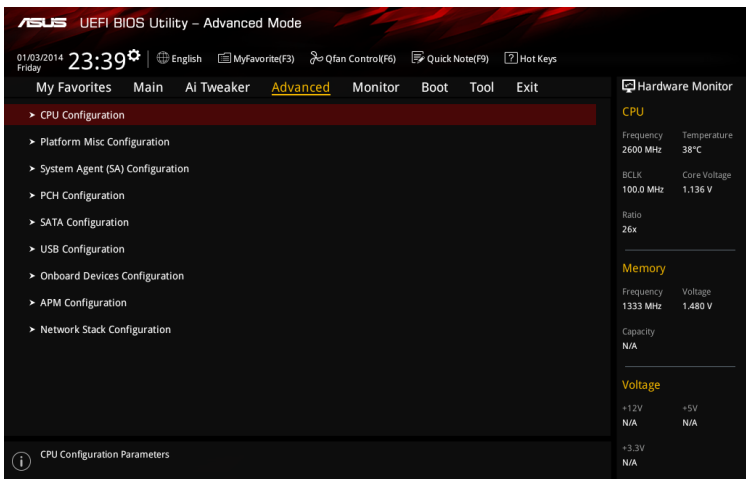
Allows you to set the DRAM reference voltage on the data lines of channel B. You can use the <+> or <-> keys to adjust the value. The values range from 0.39500V to 0.63000V with a 0.00500V interval.

2.6 Advanced menu

The Advanced menu items allow you to change the settings for the CPU and other system devices.



Be cautious when changing the settings of the Advanced menu items. Incorrect field values can cause the system to malfunction.



2.6.1 CPU Configuration

The items in this menu show the CPU-related information that the BIOS automatically detects.



The items shown in submenu may be different due to the CPU you installed.

Active Processor Cores [All]

This item allows you to select the number of CPU cores to activate in each processor package. Configuration options: [All] [1] [2] [3]

Intel Virtualization Technology [Enabled]

When set to [Enabled], a VMM can utilize the additional hardware capabilities provided by Vanderpool Technology. Configuration options: [Disabled] [Enabled]

Hardware Prefetcher [Enabled]

This item allows the CPU to prefetch commands and data in the L2 cache, reduces the DRAM loading time and improves the system performance. Configuration options: [Disabled] [Enabled]

Adjacent Cache Line Prefetch [Enabled]

This item allows the mid level cache (L2) to prefetch adjacent cache lines, reducing the DRAM loading time and improves the system performance. Configuration options: [Disabled] [Enabled]

Boot Performance Mode [Auto]

This item allows you to select the CPU performance state during system boot before the operating system takes control. The CPU runs at a selected performance ratio based on CPU configuration. Configuration options: [Max Battery] [Max Non-Turbo Performance] [Turbo Performance] [Auto]

CPU Power Management Configuration

This item allows you to manage and configure the CPU's power.

Intel® SpeedStep™ [Enabled]

This item allows the operating system to dynamically adjust the processor voltage and cores frequency, resulting to a decreased average power consumption and decreased average heat production. Configuration options: [Disabled] [Enabled]

Turbo Mode [Enabled]

This item allows you to enable your core processor's speed to run faster than the base operating frequency when it is below operating power, current and temperature specification limit. Configuration options: [Disabled] [Enabled]

CPU C states [Auto]

This item allows you to set the power saving of the CPU states. Configuration options: [Auto][Disabled] [Enabled]



The following items appear only when you set the CPU C-States to **[Enabled]**.

Enhanced C-States [Enabled]

This item allows your CPU to reduce power consumption when the system is in idle mode. Configuration options: [Enabled] [Disabled]

CPU C3 Report [Enabled]

This item allows you to disable or enable the CPU C3 report to the operating system. Configuration options: [Enabled] [Disabled]

CPU C6 Report [Enabled]

This item allows you to disable or enable the CPU C6 report to the operating system. Configuration options: [Enabled] [Disabled]

CPU C7 Report [CPU C7s]

This item allows you to disable or enable the CPU C7 report to the operating system. Configuration options: [Disabled] [CPU C7] [CPU C7s]

CPU C8 Report [Enabled]

This item allows you to disable or enable the CPU C8 report to the operating system. Configuration options: [Enabled] [Disabled]

Package C State limit [Auto]

This item allows you to set the a C-state support for the CPU package. Configuration options: [C0/C1] [C2] [C3] [C6] [C7] [C7s] [C8] [Auto]

CFG lock [Disabled]

This item allows you to enable or disable the CFG lock. Configuration options: [Disabled] [Enabled]

2.6.2 Platform Misc Configuration

The items in this menu allow you to configure the platform-related features.

PCI Express Native Power Management [Disabled]

This item allows you to enhance the power saving feature of PCI Express and perform ASPM operations in the operating system. Configuration options: [Disabled] [Enabled]



The following item appears only when you set the PCI Express Native Power Management to **[Enabled]**.

Native ASPM [Disabled]

[Enabled] Windows® Vista OS controls the ASPM (active state power management) support for devices.

[Disabled] BIOS controls the ASPM support for the device.

PCH - PCI Express options

DMI Link ASPM Control [Disabled]

This item allows you to control the Active State Power Management on both NB (NorthBridge) side and SB (SouthBridge) side of the DMI Link. Configuration options: [Disabled] [Enabled]

ASPM Support [Disabled]

This item allows you to select the ASPM state for energy-saving conditions. Configuration options: [Disabled] [L0s] [L1] [L0sL1] [Auto]

SA - PCI Express options

DMI Link ASPM Control [Disabled]

This item allows you to control the Active State Power Management on both CPU and PCH (platform controller hub) Both DMI link ASPM control items of the CPU and PCH sides must be enabled for the ASPM to take effect. Configuration options: [Disabled] [L1]

PEG ASPM [Disabled]

This item allows you to select the ASPM state for energy-saving conditions, or use the ASUS optimized energy saving profile. Configuration options: [Disabled] [Auto] [ASPM L0s] [ASPM L1] [ASPM L0sL1]

2.6.3 System Agent (SA) Configuration

VT-d [Disabled]

Allows you to enable or disable VT-d function on MCH. Configuration options: [Enabled] [Disabled]

Graphics Configuration

Allows you to select a primary display from CPU, PCIE and PCI graphical devices.

Primary Display [Auto]

Allows you to select the primary display from CPU, PCIE and PCI graphics devices. Configuration options: [Auto] [CPU Graphics] [PCIE] [PCI]

iGPU Multi-Monitor [Disabled]

This item allows you to empower both integrated and discrete graphics devices for the multi-monitor output. The CPU graphics shared system memory size is fixed at 64 MB. Configuration options: [Disabled] [Enabled]

RC6(Render Standby) [Enabled]

Allows you to enable or disable Intel® Graphics Render Standby support to reduce iGPU power use when the system is idle. Configuration options: [Disabled] [Enabled]

DVMT Pre-Allocated [32M]

Allows you to select the amount of system memory pre-allocated to DVMT 5.0 used by the internal graphics device. Configuration options: [0M] [32M] [64M] [96M] [128M] [160M] [192M] [224M] [256M] [288M] [320M] [352M] [384M] [416M] [448M] [480M] [512M] [1024M]

DMI/OPI Configuration

This item allows you to control various DMI (direct media interface) to run at PCI-E 2.0 speed.

DMI Max Link Speed [Auto]

Allows you to configure the DMI speed. Configuration options: [Auto] [Gen1] [Gen2] [Gen3]

PEG Port Configuration

Allows you to configure the PEG Port settings.

PCIEx16_1 Link Speed [Auto]

Allows you to configure the PCIEx16 speed for slot 1. Configuration options: [Auto] [Gen1] [Gen2] [Gen3]

Memory Configuration

Allows you to configure the memory configuration parameters.

Memory Remap [Enabled]

Set this item to **[Enabled]** to support DRAM address remapping for 64-bit operating systems. Configuration options: [Enabled] [Disabled]

2.6.4 PCH Configuration

This item allows you to configure the PCI Express configuration settings.

PCI Express Configuration

PCIe Speed [Auto]

Allows you to configure the PCIe speed. Configuration options: [Auto] [Gen1] [Gen2] [Gen3]

2.6.5 SATA Configuration

While entering Setup, the BIOS automatically detects the presence of SATA devices. The SATA Port items show **Empty** if no SATA device is installed to the corresponding SATA port.

Hyper Kit Mode [Disabled]

Disables this option for M.2 devices. Enables this option for ASUS Hyper Kit card. Configuration options: [Disabled] [Enabled]

SATA Controller(s) [Enabled]

Enables or disables onboard the SATA device. Configuration options: [Disabled] [Enabled]



The following items appear only when you set the SATA Controller(s) to **[Enabled]**.

SATA Mode Selection [AHCI]

Allows you to set the SATA configuration.

[AHCI] Set to [AHCI] when you want the SATA hard disk drives to use the AHCI (Advanced Host Controller Interface). The AHCI allows the onboard storage driver to enable advanced Serial ATA features that increases storage performance on random workloads by allowing the drive to internally optimize the order of commands.

Aggressive LPM Support [Disabled]

This item is designed for LPM (link power management) support with a better energy saving conditions. When disabled, the hot plug function of SATA ports are disabled. Configuration options: [Disabled] [Enabled]

SMART Self Test [On]

S.M.A.R.T. (Self-Monitoring, Analysis and Reporting Technology) is a monitoring system that shows a warning message during POST (Power-on Self Test) when an error occurs in the hard disks. Configuration options: [On] [Off]

SATA6G_1~6(Gray) [Enabled]

Allow you to enable/disable the SATA6G_1~6 port. Configuration options: [Disabled] [Enabled]

Hot Plug [Disabled]

These items allow you to enable/disable SATA Hot Plug Support. Configuration options: [Disabled] [Enabled]

2.6.6 USB Configuration

The items in this menu allow you to change the USB-related features.



The **USB Devices** item shows the auto-detected values. If no USB device is detected, the item shows None.

Legacy USB Support [Enabled]

[Enabled] Your system supports the USB devices in legacy operating systems.

[Disabled] Your USB devices can be used for BIOS setup only and cannot be recognized in the boot devices list.

[Auto] Your system automatically detects the presence of USB devices at startup. If any USB devices are detected, the legacy USB support is enabled.

XHCI Hand-off [Disabled]

[Enabled] Enables the support for operating systems without an XHCI hand-off feature.

[Disabled] Disables the XHCI Hand-off support.

USB Single Port Control

The subitems in this menu allow you to set the USB Port Disable Override features.

USB3_1~6, USB7~12 [Enabled]

Allows you to enable or disable the USB ports individually. Configuration options: [Disabled] [Enabled]



Refer to section **1.2.3 Motherboard layout** for the location of the USB ports.

2.6.7 Onboard Devices Configuration

Model Name LED Lighting [Breathing Mode]

Allows you to set the behavior of the model name LED. Configuration options: [Disabled] [Still Mode] [Breathing Mode]

HD Audio Controller [Enabled]

[Enabled] Enables the HD Audio Device.

[Disabled] Disables the HD Audio Device.



The following two items appear only when you set the **HD Audio Controller** item to [Enabled].

Front Panel Type [HD Audio]

Allows you to set the front panel audio connector (AAFP) mode to legacy AC'97 or high-definition audio depending on the audio standard that the front panel audio module supports.

[HD] Sets the front panel audio connector (AAFP) mode to high definition audio.

[AC97] Sets the front panel audio connector (AAFP) mode to legacy AC'97.

Depop [Enabled]

Configuration options: [Enabled] [Disabled]

SupremeFX LED Lighting [Breathing Mode]

Allows you to set the behavior of the audio LED. Configuration options: [Disabled] [Still Mode] [Breathing Mode] [Flowing Mode]

PCI Express X16_2 slot (Black) bandwidth [Auto]

[Auto] When X4 or faster card is installed on PCIe X16_2 slot, PCIe X16_2 slot runs at X4 mode for high performance support. When X1/X2 card or no card is installed on PCIe X16_2 slot, PCIe X16_2 slot runs at X2 mode with all slots enabled.

[X4 mode] PCIe X16_2 slot runs at X4 mode for high performance support. PCIe X1_1 and PCIe X1_2 will be disabled.

[X2 mode] PCIe X16_2 slot runs at X2 mode with all slots enabled.

Asmedia USB 3.1 Controller [Enabled]

[Enabled] Enables the onboard USB 3.0 controller.

[Disabled] Disables the controller.

Asmedia USB 3.1 Battery Charging Support [Disabled]

This item appears only when the Asmedia USB 3.0 Controller item is set to [Enabled].

[Enabled] Enables the Asmedia USB 3.0 battery charging function.

[Disabled] Disables this function.

Intel LAN Controller [Enabled]

[Enabled] Enables the Intel LAN controller.

[Disabled] Disables the controller.

Intel PXE Option ROM [Off]

This item appears only when you set the previous item to [On] and allows you to enable or disable the PXE OptionRom of the Intel LAN controller. Configuration options: [On] [Off]

USB Type C Power Switch [Auto]

[Auto] Turns off power to the Type C port when the device is not supported.

[Enabled] Turns on power to the Type C port.

Serial Port Configuration

The sub-items in this menu allow you to set the serial port configuration.

Serial Port [On]

Allows you to enable or disable the serial port (COM). Configuration options: [On] [Off]

Change Settings [IO=3F8h; IRQ=4]

This item appears only when you set the **Serial Port** to [On] and allows you to select the Serial Port base address. Configuration options: [IO=3F8h; IRQ=4] [IO=2F8h; IRQ=3] [IO=3E8h; IRQ=4] [IO=2E8h; IRQ=3]

2.6.8 APM Configuration

ErP Ready [Disabled]

Allows BIOS to switch off some power at S4/S5 to get the system ready for ErP requirement.

When set to [Enabled], all other PME options will be switched off. Configuration options:

[Enable(S4+S5)] [Enable(S5)] [Disabled]

Restore AC Power Loss [Power Off]

[Power On] The system goes into on state after an AC power loss.

[Power Off] The system goes into off state after an AC power loss.

[Last State] The system goes into either off or on state, whatever the system state was before the AC power loss.

Power On By PS/2 Keyboard [Disabled]

- [Disabled] Disables the Power On by a PS/2 keyboard.
- [Space Bar] Sets the Space Bar on the PS/2 keyboard to turn on the system.
- [Ctrl-Esc] Sets the Ctrl+Esc key on the PS/2 keyboard to turn on the system.
- [Power Key] Sets Power key on the PS/2 keyboard to turn on the system. This feature requires an ATX power supply that provides at least 1A on the +5VSB lead.

Power On By PCI-E/PCI [Disabled]

This item allows you to enable or disable the Wake-on-LAN function of the onboard LAN controller or other installed PCIe/PCI LAN cards. Configuration options: [Disabled] [Enabled]

Power On By Ring [Disabled]

- [Disabled] Disables Ring to generate a wake event.
- [Enabled] Enables Ring to generate a wake event.

Power On By RTC [Disabled]

This item allows you to enable or disable the RTC (Real-Time Clock) to generate a wake event and configure the RTC alarm date. When enabled, you can set the days, hours, minutes, or seconds to schedule an RTC alarm date. Configuration options: [Disabled] [Enabled]

2.6.9 Network Stack Configuration

Network Stack [Disabled]

This item allows user to disable or enable the UEFI network stack. Configuration options: [Disabled] [Enabled]



The following two items appear only when you set the previous item to [Enabled].

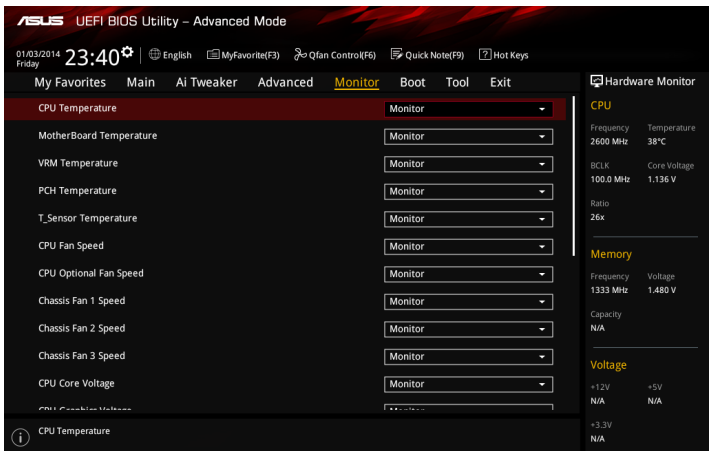
Ipv4 / Ipv6 PXE Support [Enabled]

This item allows you to enable or disable the Ipv4/Ipv6 PXE wake event. Configuration options: [Disabled] [Enabled]

2.7 Monitor menu

The Monitor menu displays the system temperature/power status, and allows you to change the fan settings.

Scroll down to display the other BIOS items.



2.7.1 CPU/ MotherBoard Temperature, VRM Temperature, PCH Temperature, T_Sensor Temperature [xxx°C/xxx°F]/ [Ignore]

The onboard hardware monitor automatically detects and displays the CPU and motherboard temperatures. Select **[Ignore]** if you do not wish to display the detected temperatures.

2.7.2 CPU Fan, CPU Optional Fan Speed, Chassis Fan 1/2/3 Speed [xxxx RPM]/ [Ignore]/ [N/A]

The onboard hardware monitor automatically detects and displays the CPU and chassis fan 1/2 speeds in rotations per minute (RPM). If the fan is not connected to the motherboard, the field shows N/A. Select **[Ignore]** if you do not wish to display the detected speed.

2.7.3 CPU Core Voltage, CPU Graphics Voltage, 3.3V Voltage, 5V Voltage, 12V Voltage, PCH Core Voltage, CPU System Agent Voltage, CPU VCCIO Voltage, DRAM Voltage, CPU Standby Voltage

The onboard hardware monitor automatically detects the voltage output through the onboard voltage regulators. Select **[Ignore]** if you do not want to detect this item.

2.7.4 Q-Fan Configuration

The subitems in this menu allows you to configure the Q-Fan features.

Qfan Tuning

Click this item to automatically detect the lowest speed and configure the minimum duty cycle for each fan.

CPU Q-Fan Control [PWM Mode]

[Auto]	Enables the CPU Q-Fan control for 4-pin CPU fan.
[Disabled]	Disables the CPU Q-Fan control feature.
[PWM Mode]	Enable the CPU Q-Fan control in PWM mode for 4-pin CPU fan.
[DC Mode]	Enable the CPU Q-Fan control in DC mode for 3-pin CPU fan.

CPU Fan Speed Lower Limit [300 RPM]

This item appears only when you enable the CPU Q-Fan Control feature and allows you to disable or set the CPU fan warning speed. Configuration options: [Ignore] [200RPM] [300 RPM] [400 RPM] [500 RPM] [600RPM]

CPU Fan Profile [Standard]

This item appears only when you enable the CPU Q-Fan Control feature and allows you to set the appropriate performance level of the CPU fan.

[Standard]	Sets to [Standard] to make the CPU fan automatically adjust depending on the CPU temperature.
[Silent]	Sets to [Silent] to minimize the fan speed for quiet CPU fan operation.
[Turbo]	Sets to [Turbo] to achieve maximum CPU fan speed.
[Manual]	Sets to [Manual] to assign detailed fan speed control parameters.



The following items appear only when you set **CPU Fan Profile** to [Manual].

CPU Upper Temperature [70]

Use the <+> and <-> keys to adjust the upper limit of the CPU temperature. The values range from 25°C to 75°C.

CPU Fan Max. Duty Cycle(%) [100]

Use the <+> and <-> keys to adjust the maximum CPU fan duty cycle. The values range from 20% to 100%. When the CPU temperature reaches the upper limit, the CPU fan will operate at the maximum duty cycle.

CPU Middle Temperature [25]

Use the <+> or <-> keys to set the value for CPU Middle Temperature. The range of the values depends on the CPU installed.

CPU Fan Middle Duty Cycle(%) [20]

Use the <+> or <-> keys to adjust the CPU fan middle duty cycle. The values range from 20% to 100%. When the CPU temperature reaches the upper limit, the CPU fan operates at the maximum duty cycle.

CPU Lower Temperature [20]

Use the <+> or <-> keys to adjust the CPU fan's lower temperature. The values range from 20°C to 75°C.

CPU Fan Min. Duty Cycle(%) [20]

Use the <+> and <-> keys to adjust the minimum CPU fan duty cycle. The values range from 20% to 100%. When the CPU temperature is under the lower limit, the CPU fan will operate at the minimum duty cycle.

2.7.5 Chassis Fan 1/2/3 Q-Fan Control [DC Mode]

[PWM mode]	Enables the chassis Q-Fan control in PWM mode for 4-pin chassis fan.
[DC mode]	Enables the chassis Q-Fan control in DC mode for 3-pin chassis fan.
[Disabled]	Disables the chassis Q-Fan control feature.



The following items appear only when you set the Chassis Fan 1/2/3 Q-Fan Control to **[PWM Mode]** or **[DC Mode]**.

Chassis Fan 1/2/3 Q-Fan Source [CPU]

This item controls the assigned fan according to the selected temperature source.
Configuration options: [CPU] [MotherBoard] [VRM] [PCH] [T_Sensor]

Chassis Fan 1/2/3 Speed Low Limit [300 RPM]

This item allows you to disable or set the chassis fan warning speed. Configuration options: [Ignore] [200RPM] [300 RPM] [400 RPM] [500 RPM] [600 RPM]

Chassis Fan 1/2/3 Profile [Standard]

This item allows you to set the appropriate performance level of the chassis fan.

[Standard]	Sets to [Standard] to make the chassis fan automatically adjust depending on the chassis temperature.
[Silent]	Sets to [Silent] to minimize the fan speed for quiet chassis fan operation.
[Turbo]	Sets to [Turbo] to achieve maximum chassis fan speed.
[Manual]	Sets to [Manual] to assign detailed fan speed control parameters.



The following items appear only when you set **Chassis Fan 1/2/3 Profile** to **[Manual]**.

Chassis Fan 1/2/3 Upper Temperature [70]

Use the <+> or <-> keys to adjust the upper limit of the chassis fan temperature. The values range from 45°C to 75°C.

Chassis Fan 1/2/3 Max. Duty Cycle(%) [100]

Use the <+> or <-> keys to adjust the maximum chassis fan duty cycle. The values range from 60% to 100%. When the chassis temperature reaches the upper limit, the chassis fan will operate at the maximum duty cycle.

Chassis Fan 1/2/3 Middle Temperature [45]

Use the <+> or <-> keys to set the value for Chassis Fan Middle Temperature.

Chassis Fan 1/2/3 Middle Duty Cycle(%) [60]

Use the <+> or <-> keys to adjust the chassis fan middle duty cycle. The values range from 60% to 100%.

Chassis Fan 1/2/3 Lower Temperature [40]

Use the <+> or <-> keys to adjust the chassis fans' lower temperature. The values range from 20°C to 75°C.

Chassis Fan 1/2/3 Min. Duty Cycle(%) [60]

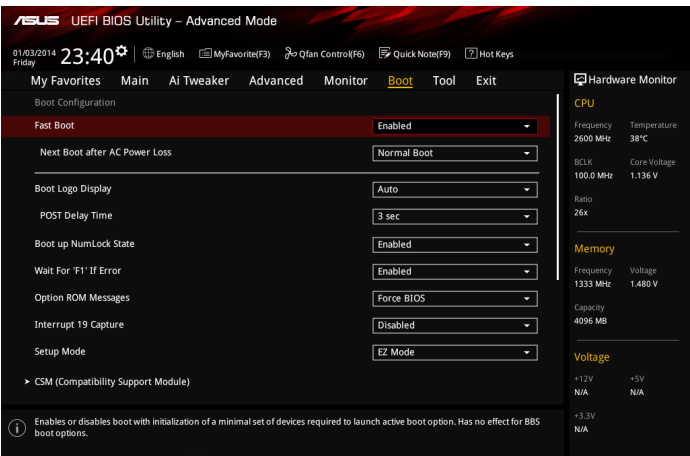
Use the <+> or <-> keys to adjust the minimum chassis fan duty cycle. The values range from 60% to 100%. When the CPU temperature is under the lower limit, the chassis fan operates at the minimum duty cycle.

2.7.6 Anti Surge Support [On]

This item allows you to enable or disable the Anti Surge function.
Configuration options: [On] [Off]

2.8 Boot menu

The Boot menu items allow you to change the system boot options.
Scroll down to display the other BIOS items.



2.8.1 Fast Boot [Enabled]

- [Enabled] Select to accelerate the boot speed.
- [Disabled] Select to go back to normal boot speed.

Next Boot after AC Power Loss [Normal Boot]

- [Normal Boot] Returns to normal boot on the next boot after AC power loss.
- [Fast Boot] Accelerates the boot speed on the next boot after AC power loss.

2.8.2 Boot Logo Display [Auto]

- [Auto] Adjusts logo automatically based on Windows® display requirements.
- [Full Screen] Maximize the boot logo size.
- [Disabled] Hide the logo during POST.

POST Delay Time [3 sec]

This item appears only when you set Boot Logo Display to [Auto] and [Full Screen]. This item allows you to select the desired additional POST waiting time to easily enter the BIOS setup. You can only execute the POST delay time during Normal Boot. The values range from 0 to 10 seconds.



This feature will only work under normal boot.

Post Report [5 sec]

This item appears only when you set Boot Logo Display to [Disabled]. This item allows you to select a desired post report waiting time. Configuration options: [1 sec] ~ [10 sec] [Until Press ESC].

2.8.3 Boot up NumLock State [Enabled]

This item allows you to enable or disable power-on state of the NumLock. Configuration options: [Disabled] [Enabled]

2.8.4 Wait for 'F1' If Error [Enabled]

When this item is set to [Enabled], the system waits for the F1 key to be pressed when error occurs. Configuration options: [Disabled] [Enabled]

2.8.5 Option ROM Messages [Force BIOS]

[Force BIOS] The third-party ROM messages will be displayed during POST.
[Keep Current] Disables the ROM messages and displays only the ASUS logo during POST.

2.8.6 Interrupt 19 Capture [Disabled]

This item allows you to trap Interrupt 19 by the option ROMs. Configuration options: [Disabled] [Enabled]

2.8.7 Setup Mode [EZ Mode]

[Advanced Mode] This item allows you to go to Advanced Mode of the BIOS after POST.
[EZ Mode] This item allows you to go to EZ Mode of the BIOS after POST.

2.8.8 CSM (Compatibility Support Module)

Allows you to configure the CSM (Compatibility Support Module) items to fully support the various VGA, bootable devices and add-on devices for better compatibility.

Launch CSM [Enabled]

[Auto] The system automatically detects the bootable devices and the add-on devices.
[Enabled] For better compatibility, enable the CSM to fully support the non-UEFI driver add-on devices or the Windows® UEFI mode.
[Disabled] Disable the CSM to fully support the Windows® Security Update and Security Boot.



The following four items appear when you set Launch CSM to [Enabled].

Boot Device Control [UEFI and Legacy OPROM]

Allows you to select the type of devices that you want to boot up. Configuration options: [UEFI and Legacy OPROM] [Legacy OPROM only] [UEFI only]

Boot from Network Devices [Legacy only]

Allows you to select the type of network devices that you want to launch. Configuration options: [Ignore] [Legacy only] [UEFI driver first]

Boot from Storage Devices [Legacy Only]

Allows you to select the type of storage devices that you want to launch. Configuration options: [Ignore] [Legacy only] [UEFI driver first]

Boot from PCI-E/PCI Expansion Devices [Legacy Only]

Allows you to select the type of PCIe/PCI expansion devices that you want to launch. Configuration options: [Legacy only] [UEFI driver first]

2.8.9 Secure Boot

Allows you to configure the Windows® Secure Boot settings and manage its keys to protect the system from unauthorized access and malwares during POST.

OS Type [Windows UEFI mode]

Allows you to select your installed operating system.

- | | |
|---------------------|--|
| [Windows UEFI mode] | This item allows you to select your installed operating system. Execute the Microsoft® Secure Boot check. Only select this option when booting on Windows® UEFI mode or other Microsoft® Secure Boot compliant OS. |
| [Other OS] | Get the optimized function when booting on Windows® non-UEFI mode. Microsoft® Secure Boot only supports Windows® UEFI mode. |

Key Management

This allows you to manage the Secure Boot keys.

Install Default Secure Boot keys

This item allows you to immediately load the default Security Boot keys, Platform key (PK), Key-exchange Key (KEK), Signature database (db), and Revoked Signatures (dbx). When the default Secure boot keys are loaded, all the Secure Boot keys' state will change from Unloaded mode to loaded mode.

Save Secure Boot Keys

This item allows you to save all the Secure Boot keys to a USB storage device.

PK Management

The Platform Key (PK) locks and secures the firmware from any non-permissible changes. The system verifies the PK before your system enters the OS.

Set New Key

This item allows you to load the downloaded PK from a USB storage device.

Delete key

Allows you to delete the PK from your system. Once the PK is deleted, all the system's Secure Boot keys will not be active. Configuration options: [Yes] [No]



The PK file must be formatted as a public key certificate or UEFI variable structure with time-based authenticated variable.

KEK Management

The KEK (Key-exchange Key or Key Enrollment Key) manages the Signature database (db) and Revoked Signature database (dbx).



Key-exchange Key (KEK) refers to Microsoft® Secure Boot Key-Enrollment Key (KEK).

Set New Key

Allows you to load the downloaded KEK from a USB storage device.

Append Key

Allows you to load the additional KEK from a storage device for an additional db and dbx loaded management.



The KEK file must be formatted as a public key certificate or UEFI variable structure with time-based authenticated variable.

Delete key

Allows you to delete the Key from your system. Configuration options: [Yes] [No]

DB Management

The db (Authorized Signature database) lists the signers or images of UEFI applications, operating system loaders, and UEFI drivers that you can load on the single computer.

Set New Key

Allows you to load the downloaded db from a USB storage device.

Append Key

Allows you to load the additional KEK from a storage device for an additional db and dbx loaded management.



The KEK file must be formatted as a public key certificate or UEFI variable structure with time-based authenticated variable.

Delete key

Allows you to delete the Key from your system. Configuration options: [Yes] [No]

DBX Management

The DBX (Revoked Signature database) lists the forbidden images of db items that are no longer trusted and cannot be loaded.

Set New Key

Allows you to load the downloaded dbx from a USB storage device.

Append Key

Allows you to load the additional KEK from a storage device for an additional db and dbx loaded management.



The KEK file must be formatted as a public key certificate or UEFI variable structure with time-based authenticated variable.

Delete key

Allows you to delete the Key from your system. Configuration options: [Yes] [No]

2.8.11 Boot Option Priorities

These items specify the boot device priority sequence from the available devices. The number of device items that appears on the screen depends on the number of devices installed in the system.



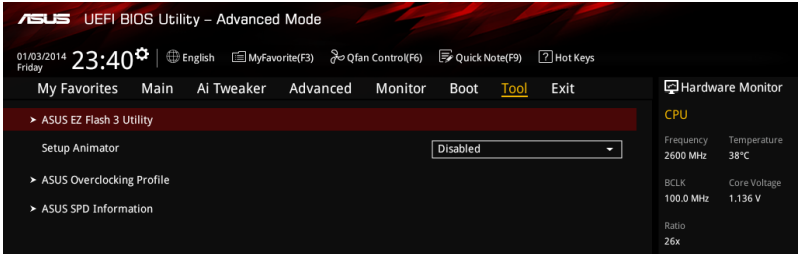
- To access Windows® OS in Safe Mode, press <F8 > after POST (Windows® 8 not supported).
- To select the boot device during system startup, press <F8> when ASUS Logo appears.

2.8.12 Boot Override

These items displays the available devices. The number of device items that appears on the screen depends on the number of devices installed in the system. Click an item to start booting from the selected device.

2.9 Tool menu

The Tool menu items allow you to configure options for special functions. Select an item then press <Enter> to display the submenu.



2.9.1 ASUS EZ Flash 3 Utility

Allows you to run ASUS EZ Flash 3. Press [Enter] to launch the ASUS EZ Flash 3 screen.



For more details, see section 2.1.2 ASUS EZ Flash 3.

2.9.2 Setup Animator [Disabled]

Enables or disables the Setup animator. Configuration options: [Disabled] [Enabled]

2.9.3 ASUS Overclocking Profile

This item allows you to store or load multiple BIOS settings.



The **Overclocking Profile** items show **Not assigned** if no profile is created.

Load from Profile

Allows you to load the previous BIOS settings saved in the BIOS Flash. Key in the profile number that saved your CMOS settings, press <Enter>, and then select Yes.



- DO NOT shut down or reset the system while updating the BIOS to prevent the system boot failure!
- We recommend that you update the BIOS file only coming from the same memory/ CPU configuration and BIOS version.

Profile Name

Allows you to create a name for the profile you want to save.

Save to Profile

Allows you to save the current BIOS settings to the BIOS Flash, and create a profile. Key in a profile number from one to eight, press <Enter>, and then select Yes.

Load/Save Profile from/to USB Drive

This item allows you to load or save profile from your USB drive, load and save profile to your USB drive.

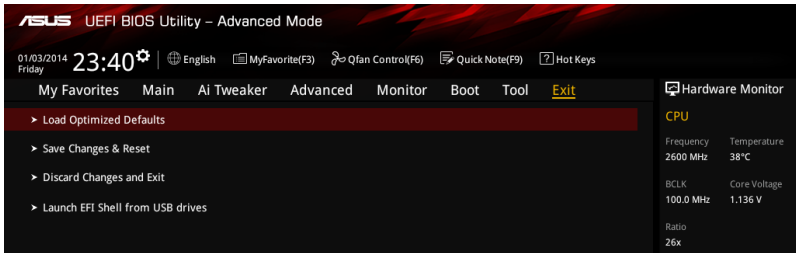
2.9.4 ASUS SPD Information

DIMM Slot Number [DIMM_A1]

Displays the Serial Presence Detect (SPD) information of the DIMM module installed on the selected slot. Configuration options: [DIMM_A1] [DIMM_B1] [DIMM_A2] [DIMM_B2]

2.10 Exit menu

The Exit menu items allow you to load the optimal default values for the BIOS items, and save or discard your changes to the BIOS items.



Load Optimized Defaults

This option allows you to load the default values for each of the parameters on the Setup menus. When you select this option or if you press <F5>, a confirmation window appears. Select OK to load the default values.

Save Changes & Reset

Once you are finished making your selections, choose this option from the Exit menu to ensure the values you selected are saved. When you select this option or if you press <F10>, a confirmation window appears. Select OK to save changes and exit.

Discard Changes and Exit

This option allows you to exit the Setup program without saving your changes. When you select this option or if you press <Esc>, a confirmation window appears. Select OK to discard changes and exit.

Launch EFI Shell from USB drives

This option allows you to attempt to launch the EFI Shell application (shellx64.efi) from one of the available USB devices.

2.11 Installing an operating system



Motherboard settings and hardware options vary. The setup procedures presented in this chapter are for reference only. Refer to Windows® operating system documentation for detailed information.

2.11.1 Windows® 7 and USB 3.0 driver for 100 Series

Based on the chipset specification, the 100 series requires USB 3.0 drivers to be preloaded in order to use USB keyboard/mouse during Windows® 7 installation. This section is a guide on preloading USB 3.0 drivers and installing Windows® 7.

Method 1: Using SATA ODD & USB devices

Load USB 3.0 drivers using the ASUS support DVD and install Windows® 7 using a USB device.

Requirement:

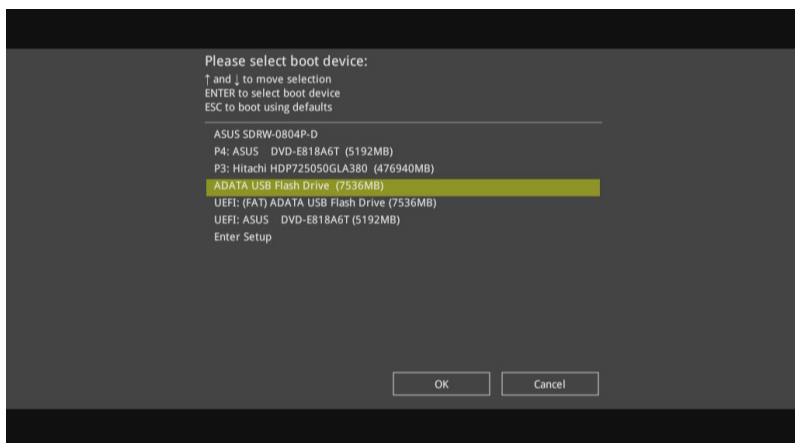
- 1 x ASUS support DVD
- 1 x Windows® 7 installation source
- 1 x SATA ODD
- 1 x USB device (ODD or storage)



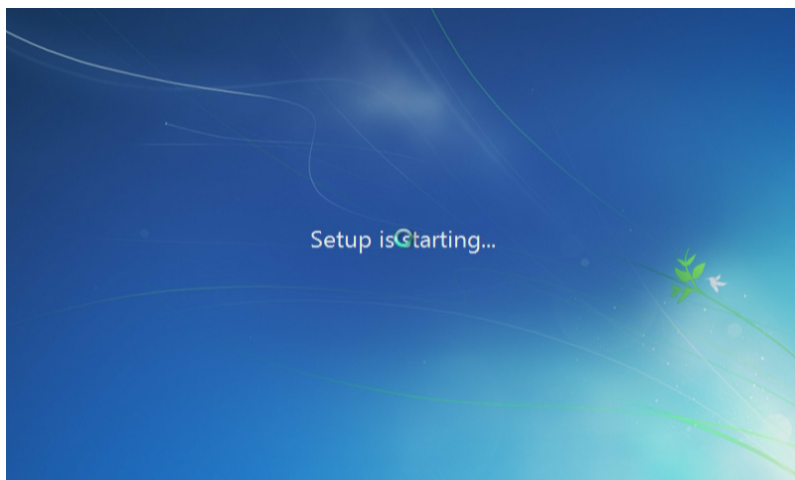
The USB storage device requires 8 GB or more capacity. It is recommended to format the storage device before use.

1. Insert the Windows® 7 installation DVD into a USB ODD, or copy all files on the Windows® 7 installation DVD to a USB storage device on a working system.
2. Connect the USB ODD or USB storage device to your 100 series platform.
3. Insert the ASUS support DVD into a SATA ODD on your 100 series platform.
4. Power on your system and press F8 during POST (Power-On Self Test) to enter the boot screen.

5. Select the USB ODD or USB storage device as the boot device.



6. The USB 3.0 driver will be loaded automatically during installation startup.



The "Setup is starting..." screen will show up if the USB 3.0 driver is loaded correctly.

7. Follow the onscreen instructions to complete the Windows® 7 installation.

Method 2: Using a modified Windows® 7 ISO

Load USB 3.0 drivers and install Windows® 7 using a modified Windows® 7 installation DVD.

Requirement:

- 1 x ASUS support DVD
- 1 x Windows® 7 installation source
- 1 x Working system (PC or notebook)
- 1 x SATA ODD

1. On your working system, create an ISO image file of the Windows® 7 installation source using a third-party ISO software.
2. Copy both "Auto_Unattend.xml" and "Auto_Unattend" folder from the root directory of the ASUS supporting DVD to your system.
3. Edit the ISO file and add both "Auto_Unattend.xml" and "Auto_Unattend" folder into the ISO file.
4. Burn this ISO file onto an empty DVD to create a modified Windows® 7 installation DVD.
5. Insert the modified Windows® 7 installation DVD into an ODD on your 100 series platform.
6. Power on your system and press F8 during POST (Power-On Self Test) to enter the boot screen.
7. Select the ODD as the boot device.
8. The USB 3.0 driver will be loaded automatically during installation startup.



The "Setup is starting..." screen will show up if the USB 3.0 driver is loaded correctly.

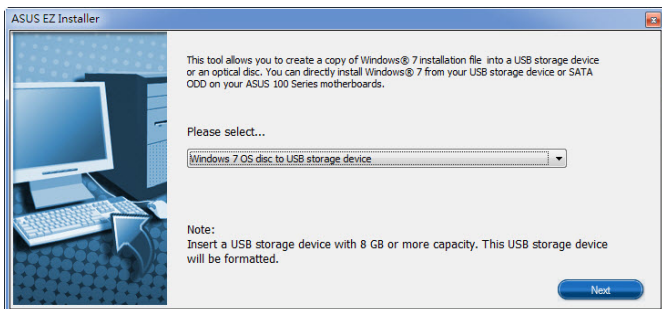
9. Follow the onscreen instructions to complete the Windows® 7 installation.

Method 3: Using ASUS EZ Installer

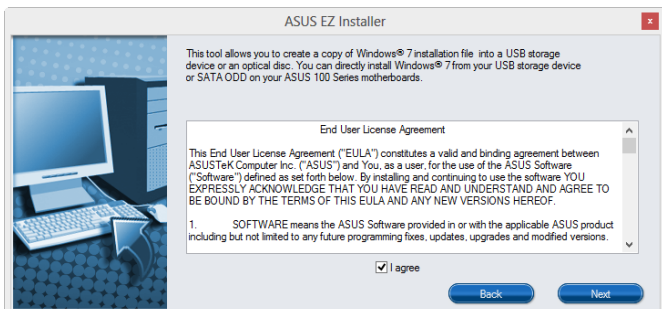
Use the ASUS EZ Installer to create a modified Windows® 7 installation source.

Requirement:

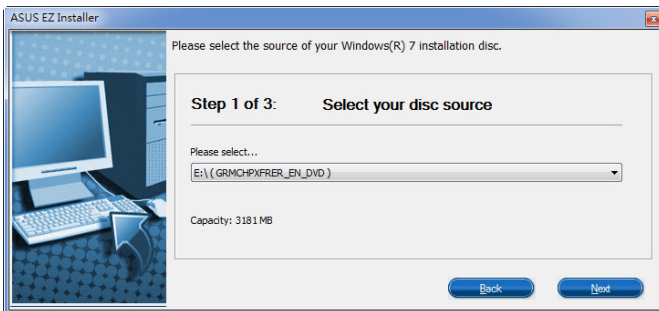
- 1 x ASUS support DVD
 - 1 x Windows® 7 installation DVD
 - 1 x Working system (PC or notebook)
 - 1 x SATA ODD
 - 1 x USB storage device (8 GB or more)
1. Insert the Windows® 7 installation DVD.
 2. Launch the ASUS EZ Installer located on the ASUS support DVD.
 3. Select a method of creating a modified Windows® 7 installation file:
 - Windows® 7 OS disk to USB storage device
- Select **Windows 7 OS disk to USB storage device** then click **Next**.



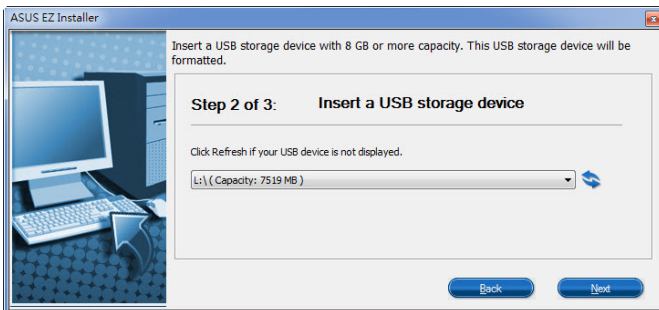
- Check **I agree** and then click **Next**.



- Select the source of the Windows® 7 installation disk then click **Next**.



- Select the USB storage device and click **next**.



Click the refresh icon  if the USB storage device is not displayed.

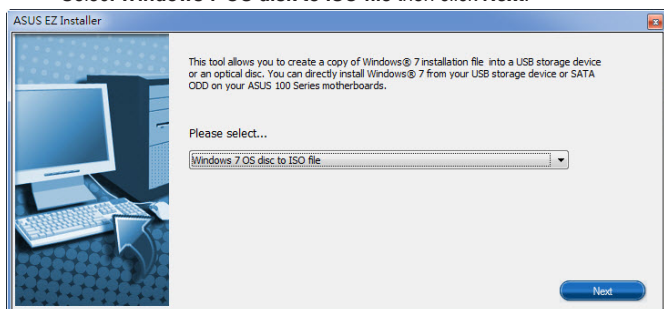
- Click **Yes** to clear the contents on the USB storage device and create a bootable USB device.



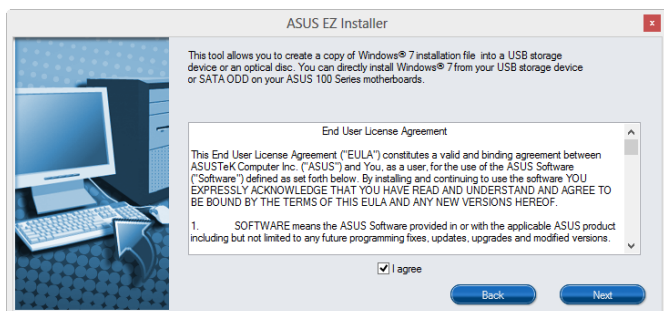
Make sure to backup contents on the USB storage device, as it will be formatted.

- Once completed, click **OK** to finish.

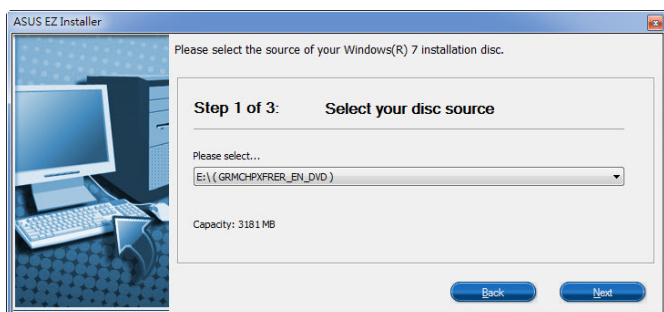
- Windows® 7 OS disk to ISO file
- Select **Windows 7 OS disk to ISO file** then click **Next**.



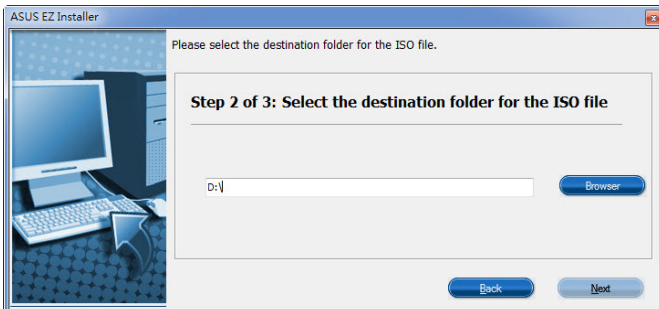
- Check **I agree** and then click **Next**.



- Select the source of the Windows® 7 installation disk then click **Next**.



- Select the folder to save the modified Windows® 7 installation ISO file and click **Next**.



- Once completed, click OK to finish.
 - Burn this ISO file onto an empty DVD to create a modified Windows® 7 installation DVD.
4. Insert the modified Windows® 7 installation DVD into an ODD or connect the USB storage device with modified Windows® 7 installation files onto your 100 series platform.
 5. Power on your system and press F8 during POST (Power-On Self Test) to enter the boot screen.
 6. Select the ODD or USB storage device as the boot device.
 7. The USB 3.0 driver will be loaded automatically during installation startup.



The "Setup is starting..." screen will show up if the USB 3.0 driver is loaded correctly.

8. Follow the onscreen instructions to complete the Windows® 7 installation.

Appendices

Notices

Federal Communications Commission Statement

This device complies with Part 15 of the FCC Rules. Operation is subject to the following two conditions:

- This device may not cause harmful interference.
- This device must accept any interference received including interference that may cause undesired operation.

This equipment has been tested and found to comply with the limits for a Class B digital device, pursuant to Part 15 of the FCC Rules. These limits are designed to provide reasonable protection against harmful interference in a residential installation. This equipment generates, uses and can radiate radio frequency energy and, if not installed and used in accordance with manufacturer's instructions, may cause harmful interference to radio communications. However, there is no guarantee that interference will not occur in a particular installation. If this equipment does cause harmful interference to radio or television reception, which can be determined by turning the equipment off and on, the user is encouraged to try to correct the interference by one or more of the following measures:

- Reorient or relocate the receiving antenna.
- Increase the separation between the equipment and receiver.
- Connect the equipment to an outlet on a circuit different from that to which the receiver is connected.
- Consult the dealer or an experienced radio/TV technician for help.



The use of shielded cables for connection of the monitor to the graphics card is required to assure compliance with FCC regulations. Changes or modifications to this unit not expressly approved by the party responsible for compliance could void the user's authority to operate this equipment.

IC: Canadian Compliance Statement

Complies with the Canadian ICES-003 Class B specifications. This device complies with RSS 210 of Industry Canada. This Class B device meets all the requirements of the Canadian interference-causing equipment regulations.

This device complies with Industry Canada license exempt RSS standard(s). Operation is subject to the following two conditions: (1) this device may not cause interference, and (2) this device must accept any interference, including interference that may cause undesired operation of the device.

Cet appareil numérique de la Classe B est conforme à la norme NMB-003 du Canada.

Cet appareil numérique de la Classe B respecte toutes les exigences du Règlement sur le matériel brouilleur du Canada.

Cet appareil est conforme aux normes CNR exemptes de licence d'Industrie Canada. Le fonctionnement est soumis aux deux conditions suivantes :

- (1) cet appareil ne doit pas provoquer d'interférences et
- (2) cet appareil doit accepter toute interférence, y compris celles susceptibles de provoquer un fonctionnement non souhaité de l'appareil.

Canadian Department of Communications Statement

This digital apparatus does not exceed the Class B limits for radio noise emissions from digital apparatus set out in the Radio Interference Regulations of the Canadian Department of Communications.

This class B digital apparatus complies with Canadian ICES-003.

VCCI: Japan Compliance Statement

VCCI Class B Statement

この装置は、クラスB 情報技術装置です。この装置は、家庭環境で使用することを目的としていますが、この装置がラジオやテレビジョン受信機に近接して使用されると、受信障害を引き起こすことがあります。
取扱説明書に従って正しい取り扱いをして下さい。

VCCI-B

This is a Class B product based on the standard of the VCCI Council. If this is used near a radio or television receiver in a domestic environment, it may cause radio interference. Install and use the equipment according to the instruction manual.

KC: Korea Warning Statement

B급 기기 (가정용 방송통신기자재)

이 기기는 가정용(B급) 전자파적합기기로서 주로 가정에서 사용하는 것을 목적으로 하며, 모든 지역에서 사용할 수 있습니다.

*당해 무선설비는 전파혼신 가능성이 있으므로 인명안전과 관련된 서비스는 할 수 없습니다.

REACH

Complying with the REACH (Registration, Evaluation, Authorisation, and Restriction of Chemicals) regulatory framework, we published the chemical substances in our products at ASUS REACH website at <http://csr.asus.com/english/REACH.htm>.



DO NOT throw the motherboard in municipal waste. This product has been designed to enable proper reuse of parts and recycling. This symbol of the crossed out wheeled bin indicates that the product (electrical and electronic equipment) should not be placed in municipal waste. Check local regulations for disposal of electronic products.



DO NOT throw the mercury-containing button cell battery in municipal waste. This symbol of the crossed out wheeled bin indicates that the battery should not be placed in municipal waste.

ASUS Recycling/Takeback Services

ASUS recycling and takeback programs come from our commitment to the highest standards for protecting our environment. We believe in providing solutions for you to be able to responsibly recycle our products, batteries, other components as well as the packaging materials. Please go to <http://csr.asus.com/english/Takeback.htm> for detailed recycling information in different regions.

English AsusTek Inc. hereby declares that this device is in compliance with the essential requirements and other relevant provisions of CE Directives. Please see the CE Declaration of Conformity for more details.

Français AsusTek Inc. déclare par la présente que cet appareil est conforme aux critères essentiels et autres clauses pertinentes des directives européennes. Veuillez consulter la déclaration de conformité CE pour plus d'informations.

Deutsch AsusTek Inc. erklärt hiermit, dass dieses Gerät mit den wesentlichen Anforderungen und anderen relevanten Bestimmungen der CE-Richtlinien übereinstimmt. Weitere Einzelheiten entnehmen Sie bitte der CE-Konformitätserklärung.

Italiano AsusTek Inc. con la presente dichiara che questo dispositivo è conforme ai requisiti essenziali e alle altre disposizioni pertinenti alle direttive CE. Per maggiori informazioni fate riferimento alla dichiarazione di conformità CE.

Компания ASUS заявляет, что это устройство соответствует основным требованиям и другим соответствующим условиям европейских директив. Подробную информацию, пожалуйста, смотрите в декларации соответствия.

Български С настоящото AsusTek Inc. декларира, че това устройство е в съответствие със съществените изисквания и другите приложими постановления на директивите CE. Вижте CE декларацията за съвместимост за повече информация.

Hrvatski AsusTek Inc. ovim izjavljuje da je ovaj uređaj sukladan s bitnim zahtjevima i ostalim odgovarajućim odredbama CE direktiva. Više pojedinosti potražite u CE izjavi o sukladnosti.

Čeština Společnost AsusTek Inc. tímto prohlašuje, že toto zařízení splňuje základní požadavky a další příslušná ustanovení směrnice CE. Další podrobnosti viz Prohlášení o shodě CE.

Dansk AsusTek Inc. Erklærer hermed, at denne enhed er i overensstemmelse med hovedkravene and andre relevante bestemmelser i CE-direktiverne. Du kan læse mere i CE-overensstemmelseserklæring.

Nederlands AsusTek Inc. verklaart hierbij dat dit apparaat compatibel is met de essentiële vereisten en andere relevante bepalingen van CE-richtlijnen. Raadpleeg de CE-verklaring van conformiteit voor meer details.

Eesti Käesolevaga kinnitab AsusTek Inc., et see seade vastab CE direktiivide oluliste nõuetele ja teistele asjakohastele sätetele. Vt üksikasju CE vastavusdeklaratsioonist.

Suomi AsusTek Inc. vakuuttaa täten, että tämä laite on CE-direktiivin olennaisten vaatimusten ja muiden asiaan kuuluvien lisäysten mukainen. Katso lisätietoja CE-vaatimustenmukaisuusvakuutuksesta.

Ελληνικά Με το παρόν, η AsusTek Inc. δηλώνει ότι αυτή η συσκευή συμμορφώνεται με τις θεμελιώδεις απαιτήσεις και άλλες σχετικές διατάξεις των Οδηγιών της ΕΕ. Για περισσότερες λεπτομέρειες ανατρέξτε στην Δήλωση Συμμόρφωσης ΕΕ.

Magyar Az AsusTek Inc. ezennel kijelenti, hogy a készülék megfelel a CE-irányelvek alapvető követelményeinek és ide vonatkozó egyéb rendelkezéseinek. További részletekért tekintse meg a CE-megfelelőségi nyilatkozatot.

Latviski Līdz ar šo AsusTek Inc. paziņo, ka šī ierīce atbilst būvstikājām prasībām un citiem saistošajiem nosacījumiem, kas norādīti CE direktīvā. Lai uzzinātu vairāk, skatiet CE Atbilstības deklarāciju.

Lietuvių Šiuo dokumentu bendrovė „AsusTek Inc.“ pareiškia, kad šis įrenginys atitinka pagrindinius CE direktyvų reikalavimus ir kitas susijusias nuostatas. Daugiau informacijos rasite CE atitikties deklaracijoje.

Norsk AsusTek Inc. erklærer herved at denne enheten er i samsvar med hovedsaklige krav og andre relevante forskrifter i CE-direktiver. Du finner mer informasjon i CE-samsvarserklæringen.

Polski Niniejszym AsusTek Inc. deklaruje, że to urządzenie jest zgodne z istotnymi wymaganiami oraz innymi powiązanymi zaleceniami Dyrektyw CE. W celu uzyskania szczegółów, sprawdź Deklarację zgodności CE.

Português A AsusTek Inc. declara que este dispositivo está em conformidade com os requisitos essenciais e outras disposições relevantes das Diretivas da CE. Para mais detalhes, consulte a Declaração de Conformidade CE.

Română Prin prezenta, AsusTek Inc. declară faptul că acest dispozitiv respectă cerințele esențiale și alte prevederi relevante ale directivelor CE. Pentru mai multe detalii, consultați declarația de conformitate CE.

Srpski AsusTek Inc. ovim izjavljuje da je ovaj uređaj u saglasnosti sa ključnim zahtjevima i drugim relevantnim odredbama CE Direktiva. Molimo vas, pogledajte CE Deklaraciju o usklađenosti za više detalja.

Slovensky Spoločnosť AsusTek Inc. týmto prehlasuje, že toto zariadenie vyhovuje príslušným požiadavkám a ďalším súvisiacim ustanoveniam smerníc ES. Viac podrobností si pozrite v prehlásení o zhode ES.

Slovenščina AsusTek Inc. tukaj izjavlja, da je ta naprava skladna s temeljnimi zahtevami in drugimi relevantnimi določili direktiv CE. Za več informacij glejte Izjavo CE o skladnosti.

Español Por la presente, AsusTek Inc. declara que este dispositivo cumple los requisitos básicos y otras disposiciones relevantes de las directivas de la CE. Consulte la Declaración de conformidad de la CE para obtener más detalles.

Svenska AsusTek Inc. förklarar härmed att denna enhet är i överensstämmelse med de grundläggande kraven och andra relevanta bestämmelser i CE-direktiven. Se CE-försäkran om överensstämmelse för mer information.

Українська AsusTek Inc. заявляє, що цей пристрій відповідає основним вимогам відповідних Директив ЄС. Будь ласка, див. більше подробиць у Декларації відповідності нормам ЄС.

Türkçe AsusTek Inc., bu aygıtın temel gereksinimlerle ve CE Yönergelerinin diğer ilgili koşullarına uyumlu olduğunu beyan eder. Daha fazla ayrıntı için lütfen CE Uygunluk Beyanına bakın.

Bosanski AsusTek Inc. ovim potvrđuje da je ovaj uređaj uskladen s osnovnim zahtjevima i drugim relevantnim propisima Direktiva EK. Za više informacija molimo pogledajte Deklaraciju o usklađenosti EK.

ASUS contact information

ASUSTeK COMPUTER INC.

Address	15 Li-Te Road, Peitou, Taipei, Taiwan 11259
Telephone	+886-2-2894-3447
Fax	+886-2-2890-7798
E-mail	info@asus.com.tw
Web site	http://www.asus.com

Technical Support

Telephone	+86-21-3842-9911
Fax	+86-21-5866-8722 ext. 9101#
Online support	http://support.asus.com/techserv/techserv.aspx

ASUS COMPUTER INTERNATIONAL (America)

Address	800 Corporate Way, Fremont, CA 94539, USA
Telephone	+1-510-739-3777
Fax	+1-510-608-4555
Web site	http://www.asus.com/us/

Technical Support

Support fax	+1-812-284-0883
General support	+1-812-282-2787
Online support	http://www.service.asus.com/

ASUS COMPUTER GmbH (Germany and Austria)

Address	Harkort Str. 21-23, D-40880 Ratingen, Germany
Fax	+49-2102-959931
Web site	http://www.asus.com/de
Online contact	http://eu-rma.asus.com/sales

Technical Support

Telephone	+49-2102-5789555
Support Fax	+49-2102-959911
Online support	http://www.asus.com/de/support/

DECLARATION OF CONFORMITY

Per FCC Part 2 Section 2.1077(a)



Responsible Party Name: ASUS Computer International

Address: 800 Corporate Way, Fremont, CA 94539,

Phone/Fax No: (510)739-3777/(510)608-4555

hereby declares that the product

Product Name : Motherboard

Model Number : B150 PRO GAMING D3

Conforms to the following specifications:

☒ FCC Part 15, Subpart B, Unintentional Radiators

Supplementary Information:

This device complies with part 15 of the FCC Rules. Operation is subject to the following two conditions: (1) This device may not cause harmful interference, and (2) this device must accept any interference received, including interference that may cause undesired operation.

Representative Person's Name : Steve Chang / President

Steve Chang

Signature :

Date : Jul. 13, 2015

Ver. 140331

EC Declaration of Conformity



We, the undersigned,

Manufacturer: ASUS/ASUS COMPUTER INC.
Address: 4F, No. 150, LI TE RD., PEITOU, TAIPEI 112, TAIWAN
Authorized representative in Europe: ASUS COMPUTER GmbH
Address, City: HARKORT STR. 21-23, 40880 RATINGEN
Country: GERMANY

declare the following apparatus:

Product name : Motherboard
Model name : B150 PRO GAMING D3

conform with the essential requirements of the following directives:

☒ 2004/108/EC-EMC Directive

☒ EN 55022:2010(A2:2011)
☒ EN 55024:2010
☒ EN 55013:2001(A1:2003+A2:2006)
☒ EN 55020:2007(A1:12011)

☒ 1999/5/EC-RATE Directive

☒ EN 300 328 V1.8.1 (2012-06)
☒ EN 300 440-1 V1.5 (2010-08)
☒ EN 300 440-2 V1.5 (2010-08)
☒ EN 301 511 V1.0.2 (2010-03)
☒ EN 301 908-1 V1.2 (2011-05)
☒ EN 301 908-2 V1.2 (2011-05)
☒ EN 301 853 V1.7 (2012-06)
☒ EN 302 544-2 V1.1 (2009-01)
☒ EN 302 545-2 V1.1 (2009-01)
☒ EN 302 545-3 V1.1 (2009-01)
☒ EN 302 545-4 V1.1 (2009-01)
☒ EN 302 545-5 V1.1 (2009-01)
☒ EN 302 545-6 V1.1 (2009-01)
☒ EN 302 545-7 V1.1 (2009-01)
☒ EN 302 545-8 V1.1 (2009-01)
☒ EN 302 545-9 V1.1 (2009-01)
☒ EN 302 545-10 V1.1 (2009-01)
☒ EN 302 545-11 V1.1 (2009-01)
☒ EN 302 545-12 V1.1 (2009-01)
☒ EN 302 545-13 V1.1 (2009-01)
☒ EN 302 545-14 V1.1 (2009-01)
☒ EN 302 545-15 V1.1 (2009-01)
☒ EN 302 545-16 V1.1 (2009-01)
☒ EN 302 545-17 V1.1 (2009-01)
☒ EN 302 545-18 V1.1 (2009-01)
☒ EN 302 545-19 V1.1 (2009-01)
☒ EN 302 545-20 V1.1 (2009-01)
☒ EN 302 545-21 V1.1 (2009-01)
☒ EN 302 545-22 V1.1 (2009-01)
☒ EN 302 545-23 V1.1 (2009-01)
☒ EN 302 545-24 V1.1 (2009-01)
☒ EN 302 545-25 V1.1 (2009-01)
☒ EN 302 545-26 V1.1 (2009-01)
☒ EN 302 545-27 V1.1 (2009-01)
☒ EN 302 545-28 V1.1 (2009-01)
☒ EN 302 545-29 V1.1 (2009-01)
☒ EN 302 545-30 V1.1 (2009-01)
☒ EN 302 545-31 V1.1 (2009-01)
☒ EN 302 545-32 V1.1 (2009-01)
☒ EN 302 545-33 V1.1 (2009-01)
☒ EN 302 545-34 V1.1 (2009-01)
☒ EN 302 545-35 V1.1 (2009-01)
☒ EN 302 545-36 V1.1 (2009-01)
☒ EN 302 545-37 V1.1 (2009-01)
☒ EN 302 545-38 V1.1 (2009-01)
☒ EN 302 545-39 V1.1 (2009-01)
☒ EN 302 545-40 V1.1 (2009-01)
☒ EN 302 545-41 V1.1 (2009-01)
☒ EN 302 545-42 V1.1 (2009-01)
☒ EN 302 545-43 V1.1 (2009-01)
☒ EN 302 545-44 V1.1 (2009-01)
☒ EN 302 545-45 V1.1 (2009-01)
☒ EN 302 545-46 V1.1 (2009-01)
☒ EN 302 545-47 V1.1 (2009-01)
☒ EN 302 545-48 V1.1 (2009-01)
☒ EN 302 545-49 V1.1 (2009-01)
☒ EN 302 545-50 V1.1 (2009-01)
☒ EN 302 545-51 V1.1 (2009-01)
☒ EN 302 545-52 V1.1 (2009-01)
☒ EN 302 545-53 V1.1 (2009-01)
☒ EN 302 545-54 V1.1 (2009-01)
☒ EN 302 545-55 V1.1 (2009-01)
☒ EN 302 545-56 V1.1 (2009-01)
☒ EN 302 545-57 V1.1 (2009-01)
☒ EN 302 545-58 V1.1 (2009-01)
☒ EN 302 545-59 V1.1 (2009-01)
☒ EN 302 545-60 V1.1 (2009-01)
☒ EN 302 545-61 V1.1 (2009-01)
☒ EN 302 545-62 V1.1 (2009-01)
☒ EN 302 545-63 V1.1 (2009-01)
☒ EN 302 545-64 V1.1 (2009-01)
☒ EN 302 545-65 V1.1 (2009-01)
☒ EN 302 545-66 V1.1 (2009-01)
☒ EN 302 545-67 V1.1 (2009-01)
☒ EN 302 545-68 V1.1 (2009-01)
☒ EN 302 545-69 V1.1 (2009-01)
☒ EN 302 545-70 V1.1 (2009-01)
☒ EN 302 545-71 V1.1 (2009-01)
☒ EN 302 545-72 V1.1 (2009-01)
☒ EN 302 545-73 V1.1 (2009-01)
☒ EN 302 545-74 V1.1 (2009-01)
☒ EN 302 545-75 V1.1 (2009-01)
☒ EN 302 545-76 V1.1 (2009-01)
☒ EN 302 545-77 V1.1 (2009-01)
☒ EN 302 545-78 V1.1 (2009-01)
☒ EN 302 545-79 V1.1 (2009-01)
☒ EN 302 545-80 V1.1 (2009-01)
☒ EN 302 545-81 V1.1 (2009-01)
☒ EN 302 545-82 V1.1 (2009-01)
☒ EN 302 545-83 V1.1 (2009-01)
☒ EN 302 545-84 V1.1 (2009-01)
☒ EN 302 545-85 V1.1 (2009-01)
☒ EN 302 545-86 V1.1 (2009-01)
☒ EN 302 545-87 V1.1 (2009-01)
☒ EN 302 545-88 V1.1 (2009-01)
☒ EN 302 545-89 V1.1 (2009-01)
☒ EN 302 545-90 V1.1 (2009-01)
☒ EN 302 545-91 V1.1 (2009-01)
☒ EN 302 545-92 V1.1 (2009-01)
☒ EN 302 545-93 V1.1 (2009-01)
☒ EN 302 545-94 V1.1 (2009-01)
☒ EN 302 545-95 V1.1 (2009-01)
☒ EN 302 545-96 V1.1 (2009-01)
☒ EN 302 545-97 V1.1 (2009-01)
☒ EN 302 545-98 V1.1 (2009-01)
☒ EN 302 545-99 V1.1 (2009-01)
☒ EN 302 545-100 V1.1 (2009-01)

☒ 2006/95/EC-LVD Directive

☒ EN 60950-1:2006 / A2:2011
☒ EN 60950-1:2006 / A2:2013

☒ 2009/125/EC-EP Directive

☒ Regulation (EC) No. 1275/2008
☒ Regulation (EC) No. 642/2009

☒ 2002/95/EC-RoHS Directive

☒ CE marking



(EC conformity marking)

Position : CEO
Name : Jerry Shen

Jerry Shen

Signature : _____

Declaration Date: 13/07/2015

Year to begin affixing CE marking: 2015

Ver. 15026

