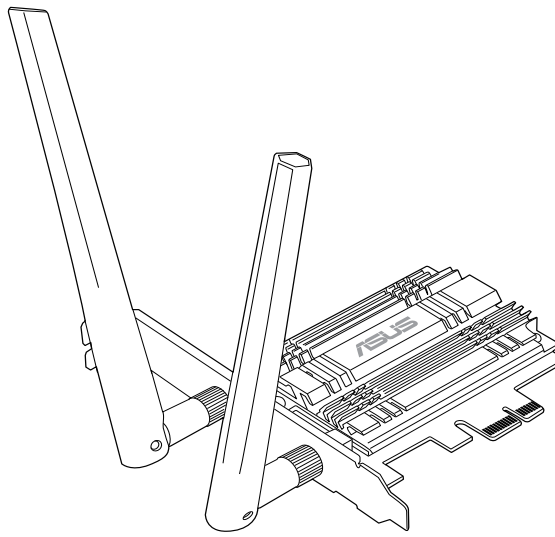


PCE-AC56

Dual-Band Wireless PCI-E Adapter

(For 802.11 a/g/b/n/ac Wireless Networks)

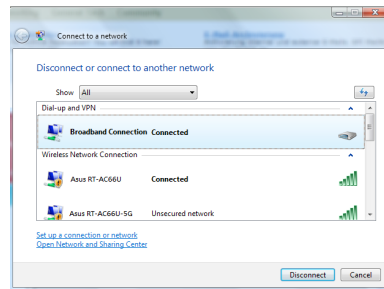


Quick Start Guide

1. Insert the support CD into the optical drive and follow the onscreen instructions to complete the installation.



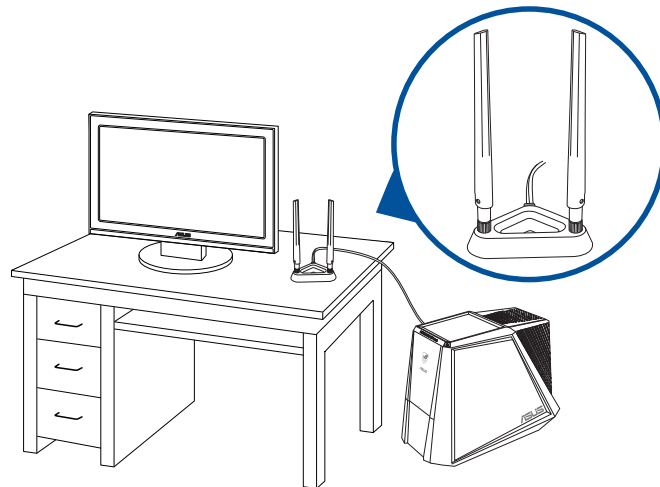
2. When setup is complete, connect your desktop PC to the Internet wirelessly via PCE-AC56.



3. Launch the ASUS utility to configure PCE-AC56.



4. Adjust the magnetic antenna base to get the best signal from your router.



Setting up a Home Network

Čeština

1. Vložte podpurný disk CD do optické jednotky a dokončete instalaci podle zobrazených pokynů.
2. Po dokončení instalace připojte stolní počítač k Internetu bezdrátově prostřednictvím PCE-AC56.
3. Spusťte nástroj ASUS pro provedení konfigurace PCE-AC56.
4. Nastavte magnetickou základnu antény pro dosažení optimálního signálu směrovače.

Suomi

1. Aseta tuki-CD-levy optiseen asemaan ja suorita asennus loppuun noudattamalla ruudun ohjeita.
2. Kun asetus on valmis, liitä pöytätietokone langattomasti internetin PCE-AC56:n kautta.
3. Käynnistä ASUS-apuohjelma määrittääksesi PCE-AC56-sovelluksen.
4. Säädä magneettista antennin alustaa saadaksesi reitittimelläsi parhaan signaalin.

български

1. Поставете помощния CD диск в оптичното устройство и следвайте инструкциите на екрана, за да приключите инсталацията.
2. Когато инсталацията приключи, свържете безжично Вашия настолен компютър към интернет чрез PCE-AC56
3. Стартирайте ASUS Utility, за да конфигурирате PCE-AC56
4. Настройте основата на магнитната антена за най-добър сигнал от рутера.

Bahasa Indonesia

1. Masukkan CD dukungan ke drive optik, lalu ikuti petunjuk di layar untuk menyelesaikan penginstalan.
2. Setelah konfigurasi selesai, sambungkan PC desktop ke Internet secara nirkabel melalui PCE-AC56.
3. Aktifkan Utilitas ASUS untuk mengkonfigurasi PCE-AC56.
4. Sesuaikan dudukan antena magnetik untuk mendapatkan sinyal terbaik dengan router Anda.

ไทย

1. ใส่แผ่น CD สนับสนุนลงในออปติคัลไดรฟ์ และทำตามขั้นตอนบนหน้าจอเพื่อทำการติดตั้งให้สมบูรณ์
2. เมื่อการตั้งค่าสมบูรณ์ เชื่อมต่อเดสก์ทอป PC ของคุณเข้ากับอินเทอร์เน็ตแบบไร้สายผ่าน PCE-AC56
3. เปิดยูทิลิตี้ ASUS เพื่อกำหนดค่า PCE-AC56
4. ปรับฐานเสาอากาศแม่เหล็ก เพื่อให้ได้สัญญาณที่ดีที่สุดกับเราเตอร์ของคุณ

Türkçe

1. Destek CD'sini optik sürücüyü takın ve kurulumu tamamlamak için ekran üzerindeki talimatları izleyin.
2. Kurulum tamamlandıktan sonra, masaüstü PC'nizi PCE-AC56 ile internete kablosuz bağlayın.
3. PCE-AC56'yi yapılandırılmak için ASUS Programını başlatın.
4. Manyetik anten tabanını ayarlayarak yönlendiricinizin en iyi sinyali alın.

繁體

1. 將驅動程式與應用程式光碟放入光碟機中，接著依照螢幕上的說明完成安裝。
2. 安裝完成後，將您的桌上型電腦透過 PCE-AC56 無線連線至網際網路。
3. 開啟華碩公用程式來設定 PCE-AC56。
4. 調整磁性天線底座以獲得路由器的最佳訊號品質。

簡中

1. 将驱动程序与应用程序光盘放入光驱中，接着依照屏幕上的说明完成安装。
2. 安装完成后，将您的台式电脑通过 PCE-AC56 无线连接至互联网。
3. 开启华硕公用程式来设置 PCE-AC56。
4. 调整磁性天线底座以获得路由器的最佳信号品质。

Hrvatski

1. Stavite CD s podrškom u pogon za optički disk i slijedite upute na zaslonu za dovršenje instalacije.
2. Kada instalacija završi, povežite računalno s internetom bezžičnom vezom preko PCE-AC56.
3. Pokrenite uslužni program ASUS radi konfiguracije PCE-AC56.
4. Prilagodite bazu magnetske antene kako biste ostvarili najbolji signal na usmjerivaču.

Slovenščina

1. Če želite dokončati namestitve, vstavite podporni CD v optični pogon in sledite navodilom na zaslonu.
2. Ko je namestitve je končana, z računalnikom preko PCE-AC56 vzpostavite brezžično povezavo z internetom.
3. Če želite konfigurirati PCE-AC56, zaženite ASUS Utility.
4. Nastavite položaj podnožja magnetne antene, za boljši sprejem signala k vašemu usmerjevalniku.

EC Declaration of Conformity	
ASUS IN SEARCH OF INCREDIBLE	
We, the undersigned,	
Manufacturer:	ASUSTek COMPUTER INC.
Address, City:	4F, No. 150, LI-TE Rd., PEITOU, TAIPEI 112, TAIWAN
Country:	TAIWAN
Authorized representative in Europe:	ASUS COMPUTER GmbH
Address, City:	HARKORT STR. 21-23, 40880 RATINGEN
Country:	GERMANY
declare the following apparatus:	
Product name :	PCE-AC56 Dual-Band Wireless PCI-E Adapter
Model name :	PCE-AC56
conform with the essential requirements of the following directives:	
<input checked="" type="checkbox"/> 2004/108/EC-EMC Directive	
<input checked="" type="checkbox"/> EN 55022:2010-AC:2011	<input checked="" type="checkbox"/> EN 55024:2010
<input checked="" type="checkbox"/> EN 61000-3-2:2006+A2:2009	<input checked="" type="checkbox"/> EN 61000-3-3:2008
<input checked="" type="checkbox"/> EN 55013:2001+A1:2003+A2:2006	<input checked="" type="checkbox"/> EN 55020:2007+A11:2011
<input checked="" type="checkbox"/> 1999/5/EC-R & TTE Directive	
<input checked="" type="checkbox"/> EN 300 328 V1.8.1(2012-06)	<input checked="" type="checkbox"/> EN 301 489-1 V1.9.2(2011-09)
<input checked="" type="checkbox"/> EN 300 440-1 V1.6.1(2010-08)	<input checked="" type="checkbox"/> EN 301 489-3 V1.4.1(2002-08)
<input checked="" type="checkbox"/> EN 300 440-2 V1.4.1(2010-08)	<input checked="" type="checkbox"/> EN 301 489-4 V1.4.1(2009-05)
<input checked="" type="checkbox"/> EN 301 511 V9.0.2(2003-03)	<input checked="" type="checkbox"/> EN 301 489-7 V1.3.1(2005-11)
<input checked="" type="checkbox"/> EN 301 908-1 V5.2.1(2011-05)	<input checked="" type="checkbox"/> EN 301 489-9 V1.4.1(2007-11)
<input checked="" type="checkbox"/> EN 301 908-2 V5.2.1(2011-07)	<input checked="" type="checkbox"/> EN 301 489-17 V2.2.1(2012-09)
<input checked="" type="checkbox"/> EN 301 893 V1.7.1(2012-06)	<input checked="" type="checkbox"/> EN 301 489-24 V1.5.1(2010-09)
<input checked="" type="checkbox"/> EN 302 544-2 V1.1.1(2009-01)	<input checked="" type="checkbox"/> EN 302 326-2 V1.2.2(2007-06)
<input checked="" type="checkbox"/> EN 302 623 V1.1.1(2009-01)	<input checked="" type="checkbox"/> EN 302 326-3 V1.3.1(2007-09)
<input checked="" type="checkbox"/> EN 50360:2001	<input checked="" type="checkbox"/> EN 301 357-2 V1.4.1(2008-11)
<input checked="" type="checkbox"/> EN 62479:2010	<input checked="" type="checkbox"/> EN 302 291-1 V1.1.1(2005-07)
<input checked="" type="checkbox"/> EN 50385:2002	<input checked="" type="checkbox"/> EN 302 291-2 V1.1.1(2005-07)
<input checked="" type="checkbox"/> EN 62311:2008	
<input type="checkbox"/> 2006/95/EC-LVD Directive	
<input type="checkbox"/> EN 60950-1 / A12:2011	<input type="checkbox"/> EN 60065:2002 / A12:2011
<input type="checkbox"/> 2009/125/EC-ErP Directive	
<input type="checkbox"/> Regulation (EC) No. 1275/2008	<input type="checkbox"/> Regulation (EC) No. 278/2009
<input type="checkbox"/> Regulation (EC) No. 642/2009	<input type="checkbox"/> Regulation (EC) No. 617/2013
<input checked="" type="checkbox"/> 2011/65/EU-RoHS Directive	
<input checked="" type="checkbox"/> CE marking	
CE (EC conformity marking)	
Position : CEO	
Name : Jerry Shen	
Signature : _____	
Declaration Date: 14/02/2014	
Year to begin affixing CE marking: 2014	

Networks Global Hotline Information

Table with 4 columns: Region, Country, Hotline Number, Service Hours. Includes Europe, Asia-Pacific, and Americas sections.

Networks Global Hotline Information

Table with 4 columns: Region, Country, Hotline Numbers, Service Hours. Includes Asia-Pacific and Americas sections.

Networks Global Hotline Information

Table with 4 columns: Region, Country, Hotline Number, Service Hours. Includes Middle East + Africa, Balkan Countries, and Romania.

- NOTES: UK support E-mail network_support_uk@asus.com... For more information, visit the ASUS support site at http://support.asus.com
ПРИМІТКА: Будь ласка, використовуйте спеціальний клей, щоб закріпити антени.

Federal Communications Commission Statement

This device complies with Part 15 of the FCC Rules. Operation is subject to the following two conditions: This device may not cause harmful interference...

This equipment has been tested and found to comply with the limits for a class B digital device, pursuant to Part 15 of the FCC Rules. These limits are designed to provide reasonable protection against harmful interference in a residential installation.

This equipment generates, uses and can radiate radio frequency energy and, if not installed and used in accordance with the instructions, may cause harmful interference to radio communications. However, there is no guarantee that interference will not occur in a particular installation.

- Reorient or relocate the receiving antenna.
Increase the separation between the equipment and receiver.
Connect the equipment into an outlet on a circuit different from that to which the receiver is connected.
Consult the dealer or an experienced radio/TV technician for help.

CAUTION: Any changes or modifications not expressly approved by the party responsible for compliance could void the user's authority to operate the equipment.

Operate the device in 5150-5250MHz frequency band for indoor use only.

Prohibition of Co-location

This device and its antenna(s) must not be co-located or operating in conjunction with any other antenna or transmitter.

FCC Radiation Exposure Statement

This equipment complies with FCC radiation exposure limits set forth for an uncontrolled environment.

CE Mark Warning

This is a Class B product, in a domestic environment, this product may cause radio interference, in which case the user may be required to take adequate measures.

Operation Channels: Ch1~11 for N. America, Ch1~14 Japan, Ch1~13 Europe (ETSI)

This equipment may be operated in AT, BE, CY, CZ, DK, EE, FI, FR, DE, GR, HU, IE, IT, LU, MT, NL, PL, PT, SK, SL, ES, SE, GB, IS, LI, NO, CH, BG, RO, TR.

NCC Warning Statement

Without permission, any company, firm or user shall not alter the frequency, increase the power, or change the characteristic and functions of the original design of the certified lower power frequency electric machinery.

Article 14

The application of lower power frequency electric machineries shall not affect the navigation safety nor interfere a legal communication, if an interference is found, the service will be suspended until improvement is made and the interference no longer exists.

低功率電波輻射性電機管理辦法

(1) 「經型式認證合格之低功率射頻電機，非經許可，公司、商號或使用者均不得擅自變更頻率、加大功率或變更原設計之特性及功能」以及(2) 「低功率射頻電機之使用不得影響飛航安全及干擾合法通信；經發現有干擾現象時，應立即停用，並改善至無干擾時方得繼續使用。前項合法通信，指依電信法規定作業之無線電通信。低功率射頻電機須忍受合法通信或工業、科學及醫療用電波輻射性電機設備之干擾」。

在 5.25-5.35GHz 頻帶內操作之無線資訊傳輸設備，限於室內使用。

IC Warning Statement

This radio transmitter(IC: 3568A-USBAC56) has been approved by Industry Canada to operate with the antenna types listed below with the maximum permissible gain and required antenna impedance for each antenna type indicated. Antenna types not included in this list, having a gain greater than the maximum gain indicated for that type, are strictly prohibited for use with this device.

This Class [B] digital apparatus complies with Canadian ICES-003. Cet appareil numérique de la classe [B] est conforme à la norme NMB-003 du Canada.

For product available in the USA/Canada market, only channel 1~11 can be operated. Selection of other channels is not possible.

IC Radiation Exposure Statement:

This equipment complies with IC RSS-102 radiation exposure limits set forth for an uncontrolled environment.

Operation is subject to the following two conditions: (1) this device may not cause interference, and (2) this device must accept any interference, including interference that may cause undesired operation of the device.

Canada, avis d'Industry Canada (IC)

Cet appareil numérique de classe B est conforme aux normes canadiennes ICES-003 et RSS-210.

Son fonctionnement est soumis aux deux conditions suivantes : (1) cet appareil ne doit pas causer d'interférence et (2) cet appareil doit accepter toute interférence, notamment les interférences qui peuvent affecter son fonctionnement.

Informations concernant l'exposition aux fréquences radio (RF)

La puissance de sortie émise par l'appareil de sans fil Dell est inférieure à la limite d'exposition aux fréquences radio d'Industry Canada (IC). Utilisez l'appareil de sans fil Dell de façon à minimiser les contacts humains lors du fonctionnement normal.

Ce périphérique a été évalué et démontré conforme aux limites SAR (Spécific Absorption Rate - Taux d'absorption spécifique) d'IC lorsqu'il est installé dans des produits hôtes particuliers qui fonctionnent dans des conditions d'exposition à des appareils portables. Ce périphérique est homologué pour l'utilisation au Canada. Pour consulter l'entrée correspondant à l'appareil dans la liste d'équipement radio (REL - Radio Equipment List) d'Industry Canada rendez-vous sur:

http://www.ic.gc.ca/app/sitt/relet/srch/nwRdSrcho.do?lang=eng

Pour des informations supplémentaires concernant l'exposition aux RF au Canada rendezvous sur : http://www.ic.gc.ca/eic/site/smt-gst.nsf/eng/sf08792.html

REACH

Complying with the REACH (Registration, Evaluation, Authorisation, and Restriction of Chemicals) regulatory framework, we published the chemical substances in our products at ASUS REACH website at http://csr.asus.com/english/REACH.htm.

Manufacturer

ASUSTeK Computer Inc. Tel: +886-2-2894-3447 Address: 4F, No. 150, LI-TE RD., PEITOU, TAIPEI 112, TAIWAN

Authorised representative in Europe ASUS Computer GmbH Address: HARKORT STR. 21-23, D-40880 RATINGEN, DEUTSCHLAND

Authorised distributors in Turkey BOGAZICI BIL GISAYAR SAN. VE TIC. A.S. Tel: +90 212 3311000 Address: AYAZAGA MAH. KEMERBURGAZ CAD. NO.10 AYAZAGA/ISTANBUL

CIZGI Elektronik San. Tic. Ltd. Sti. Tel: +90 212 3567070 Address: CEMAL SURURI CD. HALIM MERIC IS MERKEZI No: 15/C D:5-6 34394 MECIDIYEKOY/ISTANBUL

KOYUNCU ELEKTRONIK BiLGİ İSLEM SiST. SAN. VE DiS TiC. A.S. Tel: +90 216 5288888 Address: EMEK MAH.ORDU CAD. NO:18, SARIGAZI, SANCAKTEPE ISTANBUL AEEE Yönetmeliğine Uygundur.

CE Declaratie de Conformitate. Includes fields for Noi, subsemnati, Adresa, and a signature for Jerry Shen.

EC Uygunluk Beyanı. Includes fields for Biz, bu imza altındakiler, Adres, Şehir, and a signature for Jerry Shen.

EC Declaração de Conformidade. Includes fields for Noms, os abaixo assinados, Fabricante, and a signature for Jerry Shen.