



Product Brief

- A-Style : Home Cloud
- Supports Socket FM2+ 95W / FM2 100W processors
- All Solid Capacitor Design
- Supports Dual Channel DDR3 1866
- 1 x PCIe 3.0 x16, 1 x PCIe 2.0 x16, 1 x PCIe 2.0 x1, 1 x PCI
- Supports AMD Quad CrossFireX, CrossFireX and Dual Graphics
- Integrated AMD Radeon™ R7/R5 Series Graphics in A-series APU
- Multi-VGA Output Options : D-Sub, DVI-D, HDMI
- 7.1 CH HD Audio with Content Protection (Realtek ALC892 Audio Codec)
- 8 x SATA3, 4 x USB 3.0 (2 Front, 2 Rear), 10 x USB 2.0
- Supports A-Tuning, XFast 555, X-Boost, Easy Driver Installer, FAN-Tastic Tuning, USB Key



Detail Specification

Platform	- Micro ATX Form Factor - All Solid Capacitor design
A-Style	- Home Cloud
CPU	- Supports Socket FM2+ 95W / FM2 100W processors - 4 + 2 Power Phase design
Chipset	- AMD A88X (Bolton-D4)
Memory	- Dual Channel DDR3 Memory Technology - 4 x DDR3 DIMM Slots - Supports DDR3 1866/1600/1333/1066 non-ECC, un-buffered memory - Max. capacity of system memory, 64GB - Supports Intel® Extreme Memory Profile (XMP) 1.3 / 1.2 - Supports AMD Memory Profile (AMP)
Expansion Slot	- 1 x PCI Express 3.0 x16 Slot (PCI-E1 @ x16 mode) * PCI-E 3.0 is only supported with FM2+ CPU. With FM2 CPU, it only supports PCI-E 2.0. - 1 x PCI Express 2.0 x16 Slot (PCI-E3 @ x4 mode) - 1 x PCI Express 2.0 x1 Slot - 1 x PCI Slot - Supports AMD Quad CrossFireX™, CrossFireX™ and Dual Graphics
Graphics	- Integrated AMD Radeon™ R7/R5 Series Graphics in A-series APU - DirectX 11.1, Pixel Shader 5.0 with FM2+ CPU. DirectX 11, Pixel Shader 5.0 with FM2 CPU. - Max. shared memory 2GB - Three VGA output options: D-Sub, DVI-D and HDMI Ports - Supports Triple Monitor - Supports HDMI with max. resolution up to 4K × 2K (4096x2160) @ 24Hz * Only FM2+ APU can support up to 4096x2160 resolution display via HDMI port - Supports Dual-link DVI-D with max. resolution up to 2560x1600 @ 60Hz - Supports D-Sub with max. resolution up to 1920x1200 @ 60Hz - Supports Auto Lip Sync, Deep Color (12bpc), xvYCC and HBR (High Bit Rate Audio) with HDMI Port (Compliant HDMI monitor is required) - Supports Blu-ray Stereoscopic 3D with HDMI Port - Supports AMD Steady Video™ 2.0: New video post processing capability for automatic jitter reduction on home/online video - Supports HDCP with DVI-D and HDMI Ports - Supports Full HD 1080p Blu-ray (BD) playback with DVI-D and HDMI Ports
Audio	- 7.1 CH HD Audio with Content Protection (Realtek ALC892 Audio Codec) - Premium Blu-ray Audio support
LAN	- PCI-E x1 Gigabit LAN 10/100/1000 Mb/s - Qualcomm® Atheros® AR8171 - Supports Qualcomm® Atheros® Security Wake On Internet Technology - Supports Wake-On-LAN - Supports Energy Efficient Ethernet 802.3az - Supports PXE
Rear Panel I/O	- 1 x PS/2 Mouse/Keyboard Port - 1 x D-Sub Port - 1 x DVI-D Port - 1 x HDMI Port - 1 x Optical SPDIF Out Port - 4 x USB 2.0 Ports - 2 x USB 3.0 Ports (AMD A88X (Bolton-D4)) - 1 x RJ-45 LAN Port with LED (ACT/LINK LED and SPEED LED) - HD Audio Jacks: Rear Speaker / Central / Bass / Line in / Front Speaker / Microphone

Storage	- 8 x SATA3 6.0 Gb/s Connectors, support RAID (RAID 0, RAID 1, RAID 5 and RAID 10), NCQ, AHCI and Hot Plug
Connector	- 1 x IR Header - 1 x Print Port Header - 1 x COM Port Header - 1 x Chassis Intrusion Header - 1 x TPM Header - 1 x Power LED Header - 2 x CPU Fan Connectors (1 x 4-pin, 1 x 3-pin) - 1 x Chassis Fan Connector (4-pin) - 1 x Power Fan Connector (3-pin) - 1 x 24 pin ATX Power Connector - 1 x 8 pin 12V Power Connector - 1 x Front Panel Audio Connector - 3 x USB 2.0 Headers (Support 6 USB 2.0 ports) - 1 x USB 3.0 Header by AMD A88X (Bolton-D4) (Supports 2 USB 3.0 ports)
BIOS Feature	- 64Mb AMI UEFI Legal BIOS with GUI support - Supports "Plug and Play" - ACPI 1.1 Compliant wake up events - Supports jumperfree - SMBIOS 2.3.1 support - DRAM, CPU Voltage multi-adjustment
Support CD	- Drivers, Utilities, AntiVirus Software (Trial Version), CyberLink MediaEspresso 6.5 Trial, Google Chrome Browser and Toolbar, Start8 (30 days trial)
Unique Feature	- ASRock A-Tuning - ASRock Instant Boot - ASRock Instant Flash - ASRock APP Charger - ASRock XFast USB - ASRock XFast LAN - ASRock XFast RAM - ASRock Crashless BIOS - ASRock OMG (Online Management Guard) - ASRock Internet Flash - ASRock UEFI System Browser - ASRock UEFI Tech Service - ASRock On/Off Play Technology - ASRock Dehumidifier Function - ASRock Easy RAID Installer - ASRock Easy Driver Installer - ASRock Interactive UEFI - ASRock Fast Boot - ASRock X-Boost - ASRock Restart to UEFI - ASRock USB Key - ASRock FAN-Tastic Tuning - Hybrid Booster: - ASRock U-COP
Hardware Monitor	- CPU temperature sensing - Chassis temperature sensing - CPU Fan Tachometer - Chassis Fan Tachometer - CPU/Chassis Quiet Fan - CPU/Chassis Fan multi-speed control - CASE OPEN detection - Voltage monitoring: +12V, +5V, +3.3V, Vcore
OS	- Microsoft® Windows® 8.1 32-bit / 8.1 64-bit / 8 32-bit / 8 64-bit / 7 32-bit / 7 64-bit
Certifications	- FCC, CE, WHQL - ErP/EuP ready (ErP/EuP ready power supply is required)
Accessories	- Quick Installation Guide, Support CD, I/O Shield - 2 x SATA Data Cables



This motherboard supports Security Wake On Internet Technology with the onboard Qualcomm® Atheros® LAN, so you can connect with your PC from anywhere in the world. You will be able to power your PC on or turn it off, monitor and take control of it remotely with another smartphone, tablet or computer.

TV

Watch your favorite local TV programs by connecting to your PC.



Multimedia

Stream your secret stash of vids, music and pics.



Mail

Keep your stored mail near at hand whenever you need it.



Documents

Access or send files remotely anywhere.



Home Cloud

*Remote Desktop
Anytime,
Anywhere*



Monitor

Keep an eye on your pets or children when you are away from home.



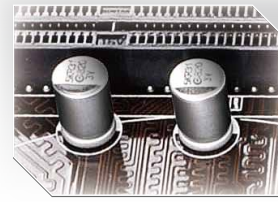
POWERED BY
QUALCOMM

SUPPORTED BY
 Sunlogin



FM2/FM2+ APU Support

This motherboard is compatible with both AMD FM2 and FM2+ APUs. Please note that some new features may be only supported by FM2+ APUs.



All Solid Caps

All the capacitors on this board are built with 100% all solid capacitors. With these solid caps, ASRock motherboards are allowed to perform more stably and ensure longer lifetime.



Triple Monitor

This motherboard supports Triple Monitor. You may choose up to three display interfaces to connect monitors and use them simultaneously.



Next-Gen PCIe 3.0

- Higher bit rate - 8.0GT/s
- Higher bandwidth per lane - 1GB/s
- Higher efficiency - 98.5% encoding efficiency
- 100% backward compatible with previous PCI-E 2.0 / 1.0 standard

Note: PCI-E 3.0 supported with FM2+ APUs



4K/2K

4K is a new standard for display resolutions with a minimum of 3840 x 2160 pixels, which is twice the horizontal and vertical resolution of the 1080p format and four times as many pixels overall.

* Only FM2+ APU can support up to 4096 x 2160 resolution display via HDMI port.



X-Boost

Brilliantly designed for smart overclocking, ASRock X-Boost Technology is able to unleash the hidden powers of your CPU. Simply press "X" when turning on the PC, X-Boost will automatically overclock the relative components to get up to 15.77% performance boost!



A-Tuning

A-Tuning is ASRock's multi purpose software suite with a new interface, more new features and improved utilities, including XFast RAM, OC Tweaker and a whole lot more.



USB Key

Just plug in the USB Key and let your computer log in to windows automatically without having to type your username and password!



XFast 555

ASRock's unique XFast 555 Technology (XFast RAM, XFast LAN, and XFast USB) allows users to experience 5 times performance boost in terms of system performance, LAN speed and USB transfer speed.



UEFI Tech Service

Contact ASRock Tech Service by sending a support request form from the UEFI setup utility if you are having trouble with your PC.



FAN-Tastic Tuning

Configure different fan speeds for respective temperatures using the graph. The fans will automatically shift to the next speed level when the assigned temperature is met.



Dehumidifier

Users may prevent motherboard damages due to dampness by enabling "Dehumidifier Function". When enabling Dehumidifier Function, the computer will power on automatically to dehumidify the system after entering



Easy Driver Installer

For users that don't have an optical disk drive to install the drivers from our support CD, Easy Driver Installer is a handy tool in the UEFI that installs the LAN driver to your system via an USB storage device, then downloads and