

# SM410 | Mini Windshield Suction and Air Vent Mount Kit with Universal Cradle



## Package Contents:

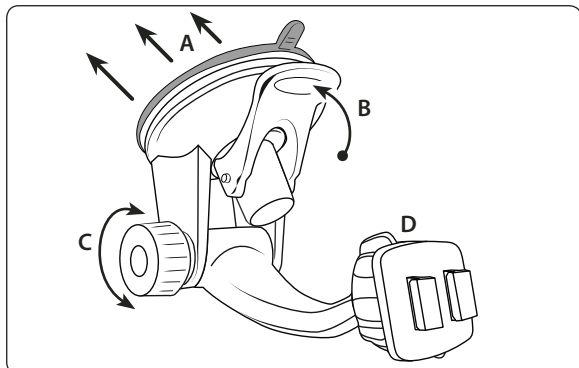
- (1) GN014-SBH - Deluxe mini windshield suction pedestal
- (1) GN047-SBH - Swivel air vent mount
- (1) SM040-2 - Universal phone cradle with adjustable feet
- (1) AP013 - Optional adhesive circular disc for dash / console
- (1) Alcohol cleaning pad

No tools required for installation.

**!** Do not place mount in or near an air bag deployment zone or where it will obstruct view of the road.

## Windshield Mounting

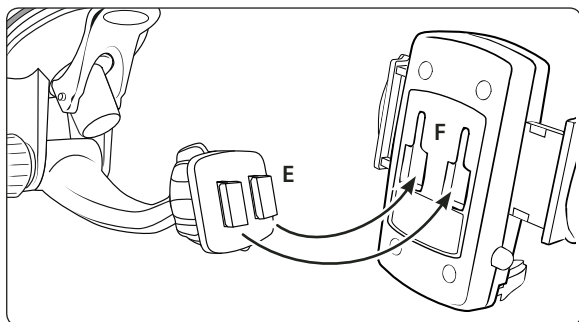
- Step 1. Find a safe location on the interior of the vehicle's windshield to mount the pedestal. Firmly push the suction base (A) against the windshield and flip the base lever down (B) to the locked position. See diagram below.
- Step 2. Adjust the angle of the pedestal arm by tightening the angle adjustment knob (C) at the base to the desired angle.



- Step 3. Adjust the angle and rotation of the pedestal head by loosening the swivel-tightening ring (D).

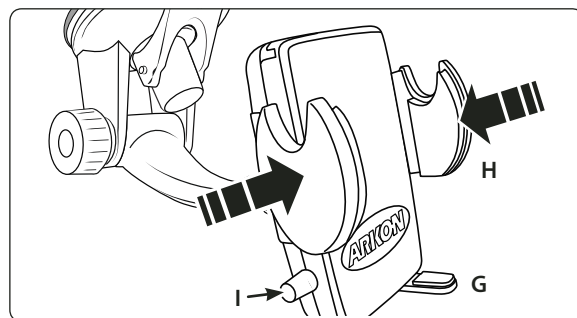
## Universal Cradle Attachment

- Step 1. Attach the universal cradle to the dual-T head by inserting the dual T-tabs (E) into the dual T-slots (F) on the cradle back.



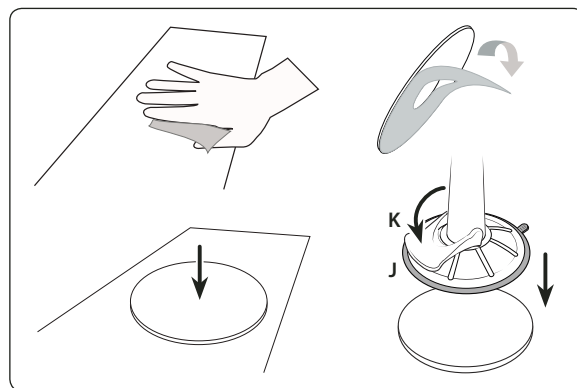
## Device Insertion and Removal from Cradle

- Step 1. Place the phone or device into the cradle with the device sitting on the adjustable support legs (G). Clamp the grip arms (H) inward to firmly grasp the device. Press the release button (I) to open the arms.



## Dash or Console Mounting (Optional)

- Step 1. Find a safe location on the dash or console. Use the included alcohol pad to clean the mounting surface if necessary. Remove the paper backing on the adhesive disc and firmly press in place.
- Step 2. Place the pedestal's suction base (J) over the center of the circular disc. While firmly holding the pedestal on top of the disc, flip the base lever down (K) to the locked position.



## Safety Precautions

Do not install Arkon products over an air bag cover or within the air bag deployment zone. Arkon Resources, Inc. assumes no responsibility of liability for injury or death as a result of car crashes and/or air bag deployment.

Arkon is not responsible for any damages caused to your car, your device, or yourself due to the installation or use of this pedestal mount.

**ARKON**  
RESOURCES INC.

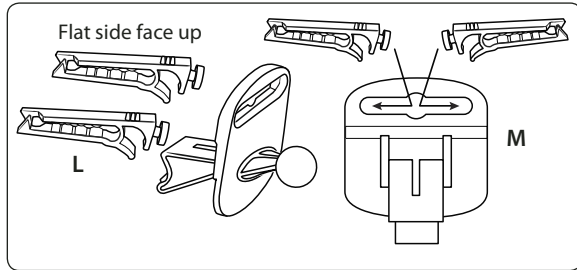
The Mobile Mounting Specialists™

Consumer Hotline:  
USA (800) 841-0884  
INT'L (626) 254-9005  
Monday - Friday 9 am - 5 pm, PST

[www.arkon.com](http://www.arkon.com)  
Arcadia, CA 91006 USA  
Designed in USA | Made in China and Taiwan  
© Copyright 2010 Arkon Resources, Inc.

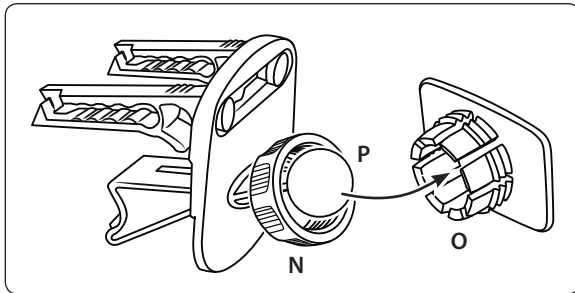
## Air Vent Mount Assembly

Step 1. Attach the vent mounting clips (L) to the back of the pedestal (M) with the vent clips positioned with the flat sides facing up.



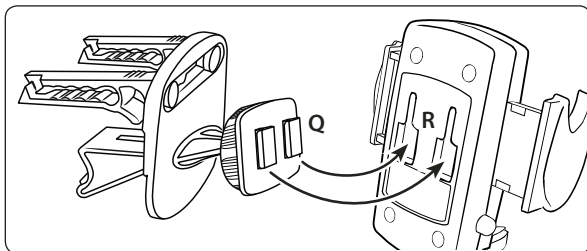
## Swivel Ball Head Assembly Attachment

Step 1. Slip the tightening ring (N) over the air vent mount ball. Snap the dual-T head adapter plate (O) on to the mounting ball (P). Screw the tightening ring over the adapter plate until securely holding the plate. Swivel to adjust the angle of the dual-T head.



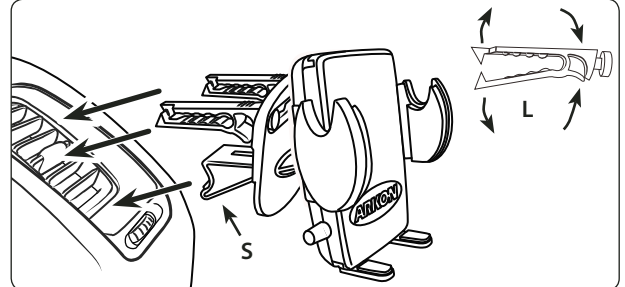
## Attach Universal Cradle to Air Vent Mount

Step 1. Attach the universal cradle to the dual-T head by inserting the dual-T tabs (Q) into the dual T-slots (R) on the back of the cradle or device.



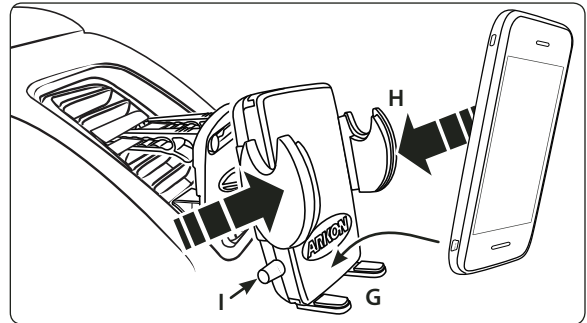
## Air Vent Mounting

Step 1. Pinch the vent mounting clips (L) so that the teeth open and gently insert vent pedestal into vent louvres until the mounting clips are attached to the fin/blade of the vent. Adjust the support leg (S) vertically until it rests firmly along the bottom of the vent or dashboard surface below the vent.



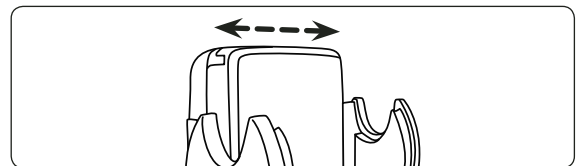
## Device Insertion and Removal from Cradle

Step 1. Place the phone or device into the cradle with the device sitting on the support legs (G). Clamp the grip arms (H) inward to firmly grasp the device. Press the release button (I) to open the arms.



## Universal Cradle Adjustments

Step 1. If necessary, adjust the removable support legs by sliding them laterally on top or bottom of the cradle. These will provide added support and stability for your device.



**!** Use caution when adjusting the swivel head. Use caution when inserting or removing the pedestal or the phone from the cradle. Make sure that the teeth of the vent clips are open wide enough to not damage the vent fins/blades.

## **!** Safety Precautions

Do not install Arkon products over an air bag cover or within the air bag deployment zone. Arkon Resources, Inc. assumes no responsibility of liability for injury or death as a result of car crashes and/or air bag deployment.

Arkon is not responsible for any damages caused to your car, your device, or yourself due to the installation or use of this pedestal mount.

**ARKON**  
RESOURCES INC.

The Mobile Mounting Specialists™

Consumer Hotline:  
USA (800) 841-0884  
INT'L (626) 254-9005  
Monday - Friday 9 am - 5 pm, PST

[www.arkon.com](http://www.arkon.com)  
Arcadia, CA 91006 USA  
Designed in USA | Made in China and Taiwan  
© Copyright 2010 Arkon Resources, Inc.