



Atech Flash Technology, Inc.



# iDuo™ hub

User's Guide



# Congratulations

Congratulations on your purchase of the iDuo hub + remote. The iDuo is a docking station for iPod™ and a USB 2.0 Hub for your Mac or PC computer. The Remote Control is used for controlling iPod playback functions of music, photos and videos to an external source. This guide will explain the features and specifications of your new iDuo, as well as the installation in a few simple steps. Please retain this guide for further reference.

## Operating System Requirements:

Mac OS X v 9.2 and later

Windows ME, XP

Windows 2000 (driver installation required)

## Computer Requirements:

Mac/PC computer with open USB port 2.0/1.1

If you have any questions regarding with the Atech product, please contact:

## Technical Support :

Toll free number (USA only) 1-866-85-ATECH (1-866-852-8324)

[techsupport@atechflash.com](mailto:techsupport@atechflash.com)

[www.atechflash.com](http://www.atechflash.com)

# Package Contents

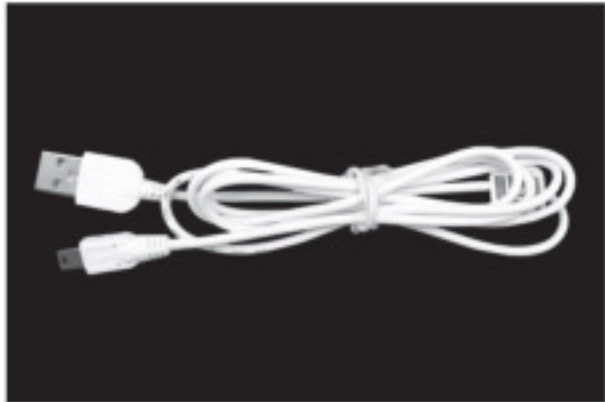
**iDuo hub**



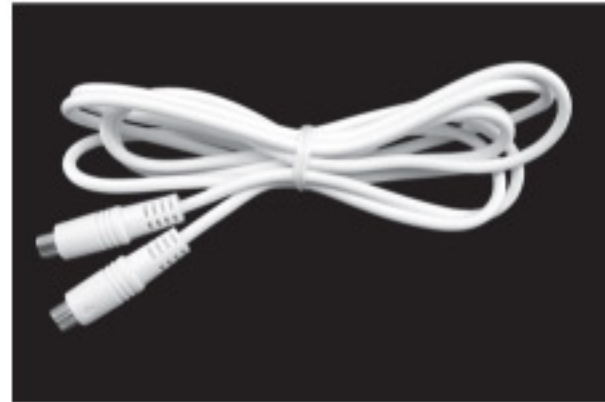
**iDuo remote**



**USB 2.0 Cable**



**S-Video Cable**



**Audio Line-out Cable**



**Power Supply**



# Using the iDuo dock

The iDuo dock is designed to hold the iPod upright as it charges or syncs. First locate your Universal Dock adapter for specific iPod and place into Universal Well of iDuo hub. Next plug in the provided Power Supply to the back of the iDuo hub and the other end to power outlet. Then connect the provided USB A to mini-B cable to your computer and iDuo hub. Dock the iPod onto the iDuo.



1. Insert UNIVERSAL DOCK into the Universal Well on the iDuo hub



2. Connect POWER SUPPLY to iDuo hub



3. Connect USB CABLE to iDuo hub and to desktop/notebook computer



4. Dock the iPod into the iDuo hub to sync & charge

## LINE-OUT to Play Audio through External Speakers/Stereo

The iDuo dock is designed to play audio from iPod to external speakers, amplifier, or stereo system. Connect the provided Audio Line-out cable from your dock to your external audio source. Dock your iPod and select your music. Now you can adjust the volume or choose your music with your Remote Control.



1. Connect 3.5mm AUDIO CABLE to LINE OUT port



2. Connect audio cable to Line-in of the external audio source



3. Slide iPod onto dock and select your music.



4. Control volume and songs from the remote control

## S-VIDEO Out to display PHOTO/VIDEO to an External Display

The iDuo dock is designed to display photos/ videos from the iPod to an external display. Connect the provided S-Video cable from dock to display source such as a TV, LCD Projector, VCR, etc.. Dock the iPod and select your photos or videos. Now you can control your photos or videos with your Remote Control.



1. Connect S-Video Cable to S-VIDEO OUT port



2. Connect S-Video cable to TV or other video source



3. Slide iPod onto dock and select your photos or video.



4. Control photos or videos from the remote control

# Using the iDuo hub

The iDuo hub is designed to connect USB Devices to your computer. First plug in the provided Power Supply to the back of iDuo hub and the other end to power outlet. Then connect the provided USB A to mini-B cable to iDuo hub and computer. Plug any USB device into 1 of 3 available USB ports on iDuo hub wait for your system to recognize the device. Once recognized, you can begin to access or utilize your USB device.



1. Connect POWER SUPPLY to iDuo hub



2. Connect USB cable to USB port on back of iDuo hub



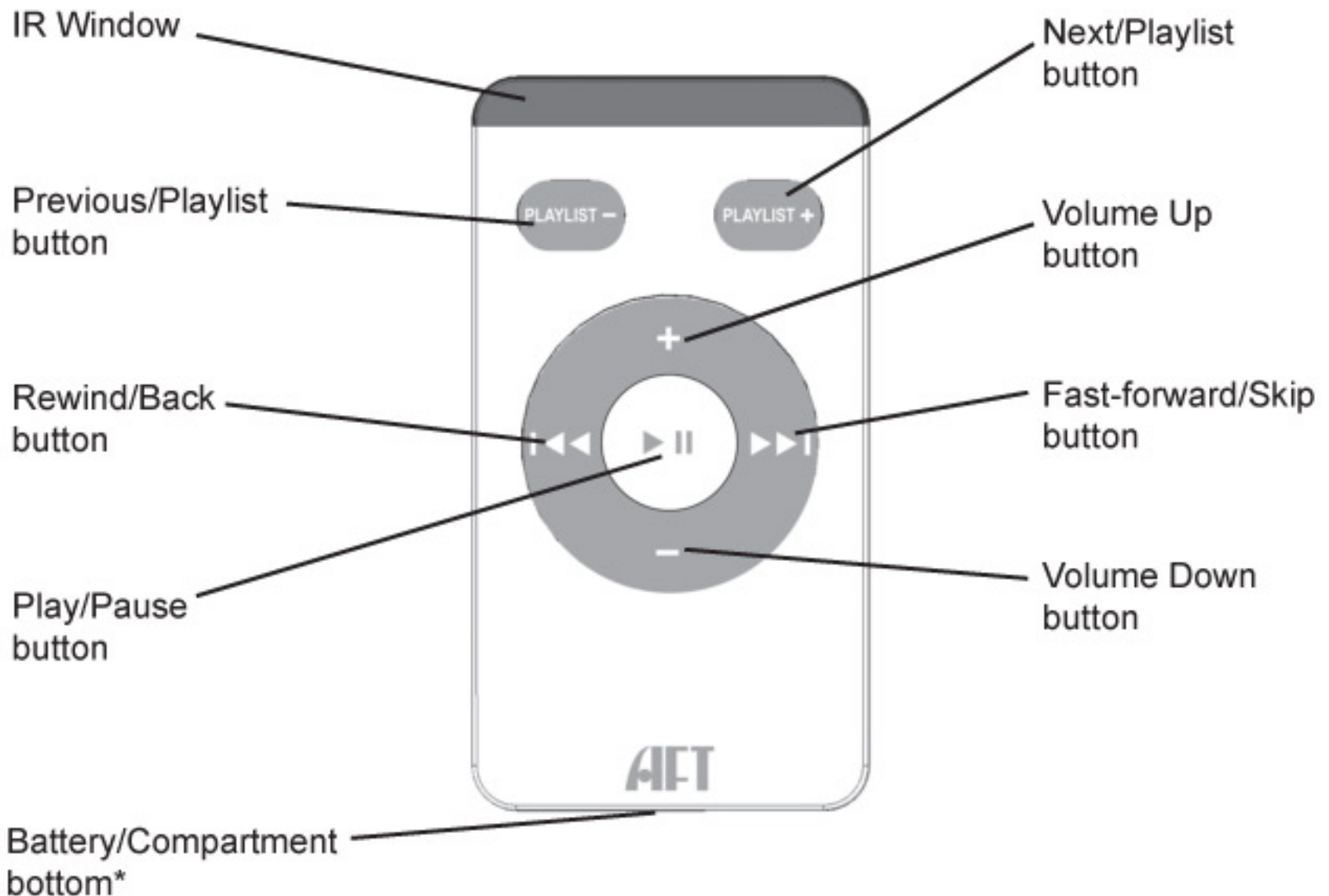
3. Connect USB Cable to USB port of Computer



4. Plug in USB Device into 1 of 3 open ports on iDuo hub

# Using the Remote Control

The iDuo hub has a built-in Infrared Receiver (IR) and comes with a Remote Control to control some of the iPod's playback features for music, photos, and videos.



\*The iDuo Remote takes a CR2032 battery which is included.



# Replacing the Battery

The iDuo remote requires a CR2032 battery which is included. To change the battery, locate the small clip on the bottom of the remote. Then pull with your fingernail and eject the battery compartment clip. Remove the the old battery and replace with the new one, making sure the positive (+) side faces up.



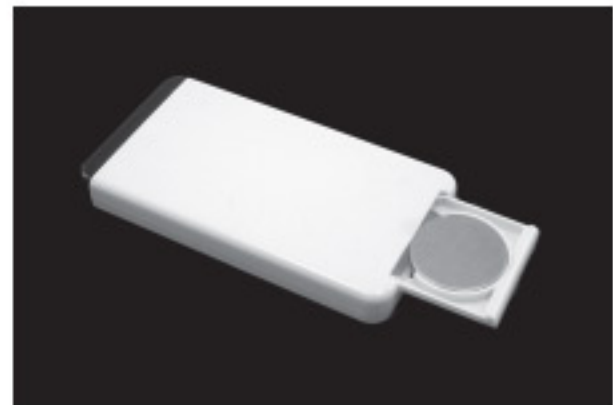
1. Locate small clip and pull with fingernail



2. Eject the battery compartment



3. Remove old battery, replace with new battery with positive (+) face up



4. Push battery compartment back into remote control

# Specifications

Dimension (W x H x D):	3.93 inch x 0.92 inch x 2.36 inch / 100 mm x 23.5 mm x 60 mm
Power Requirement:	5V DC (Power Supply)
Operation Current:	<200mA
Suspend Current:	<500uA
Transfer rate:	Up to 480 Mbps (via USB 2.0) Up to 12 Mbps (via USB 1.1)
Supported O/S:	Mac OS X 9.2 and later Windows XP, 2000

Specifications are subject to change without further notice.

Apple and the Apple logo, iPod and the iPod logo are trademarks of Apple Computer, Inc.

All trademarks, trade names and copyrights are properties of their respective owners.

Atech Flash Technology, Inc. ("AFT"), warrants to the original end user ("Customer") that under normal intended use AFT products will be free from defects in materials and workmanship for one (1) year from the date of purchase. During warranty period, AFT shall either repair, or replace defective product. AFT shall not be liable for any losses or damages of any kind resulting from the use of AFT products or for any of Customer's data stored on products returned to AFT for service. AFT accepts no liability for and provides no expressed or implied warranty against any loss of data or images.

You may register your product at <http://www.atechflash.com>. Customer must have proof of purchase and obtain warranty service authorization from AFT within the applicable warranty period before returning defective products to AFT. Returned products must be shipped prepaid and packaged appropriately, and it is recommended that they be insured or sent by a method that provides for tracking of the package.

Limitations: This limited warranty is in lieu of all other warranties, terms or conditions; including warranties, terms, or conditions of merchantability, fitness for a particular purpose, satisfactory quality, suppliers, and in no event will AFT be liable for any special, incidental, consequential, or indirect damages resulting from the possession, use or failure of this product. Product names mentioned herein are for identification purposes only and may be trademarked and/or registered trademarks of their respective companies.