

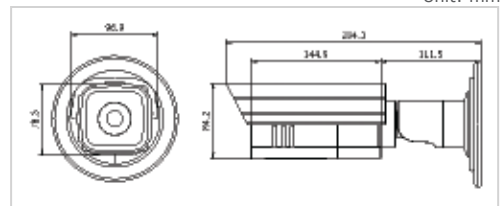
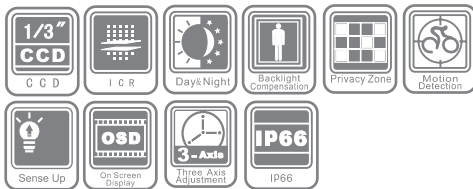
DWDR



DS-2CC1173N-VF(IR) Weather Proof Bullet Camera

- 1/3" SONY Super HAD CCD II
- True day & night
- OSD menu
- 3D digital noise reduction
- Digital wide dynamic range
- Dual Power Supply option (12 V DC / 24 V AC)
- Weather Proof: IP66 standard

Outdoor



Unit: mm

Specifications

	DS-2CC1173N-VF	DS-2CC1173N-VFIR	
Camera	Image Sensor	1/3" SONY Super HAD CCD II	
	Signal System	NTSC	
	Effective Pixels	NTSC: 768 (H) × 494 (V)	
	Min. Illumination	Color: 0.1 Lux @ (F1.2, AGC ON) B/W: 0.01 Lux @ (F1.2, AGC ON)	Color: 0.1 Lux @ (F1.2, AGC ON) 0 Lux with IR
	Shutter Time	NTSC: 1/60 s to 1/100,000 s	
	Lens	2.8 - 12mm @ F1.4 Angle of view: 92° - 27.2°	
	Lens Mount	φ14	
	Day & Night	-	IR cut filter with auto switch
	Auto Iris	DC drive	
	Angle Adjustment	Universal Mount	
	-	-	
	Horizontal Resolution	560 TVL (Color), 600 TVL (B/W)	
	Synchronization	Internal / Power synchronization	
	Video Output	1Vp-p composite output (75 Ω / BNC); Test monitor out [1Vp-p composite output (75 Ω / BNC), device line]	
S/N Ratio	More than 52 dB		
Menu	Camera ID	On / Off (15 letters, adjusted position)	
	Auto Gain	Low / Middle / High / Off	
	D/N Mode	Auto / Day / Night	
	Auto White Balance	Auto 1 / Auto 2 / Manual / Auto control	
	Privacy Mask	On / Off, maximum 8 zones	
	Motion Detection	On / Off	
	BLC	Area / Value / Off	
	Digital Wide Dynamic Range	Indoor / Outdoor / Off	
	Anti-flicker	On / Off	
	Language	English / Chinese	
General	Video	Gamma Correction, Digital Zoom, Digital Noise Reduction, POS/NEG ,Mirror, Resolution, Y, C, DPC (Defective Pixel Correction)	
	Operating Conditions	-10 °C - 60 °C (14 °F - 140 °F) Humidity 90% or less (non-condensing)	
	Power Supply	24 V AC ± 10%, 12 V DC ± 10%	
	Power Consumption	Max. 4.5 W	Max. 10 W
	Weather Proof Rating	IP66	
	IR Range	-	Approx 20 to 30 meters
Dimension (Dia.xH)	96.9 x 84.2 x 315.4 mm (3.81" × 3.31" × 12.42")		
Weight	2100 g (4.62 lbs)		