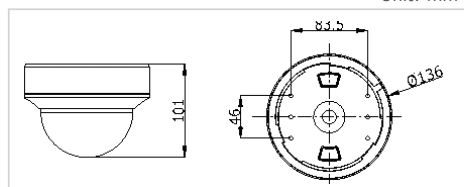
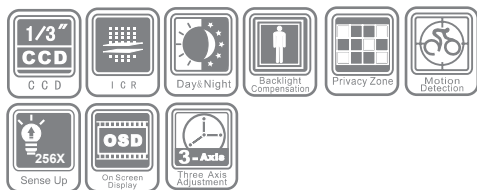


DWDR



DS-2CC5173N-VF Vari-Focal Indoor Dome Camera

- 1/3" SONY Super HAD CCD II
- IR cut filter with auto switch
- OSD menu
- 3D digital noise reduction
- Auto iris with DC drive
- 3-Axis positioning
- Vari-Focal
- Digital WDR



Specifications

		DS-2CC5173N-VF
Camera	Image Sensor	1/3" SONY Super HAD CCD II
	Signal System	NTSC
	Effective Pixels	NTSC: 768 (H) × 494 (V)
	Min. Illumination	Color: 0.1 Lux @ (F1.2, AGC ON), 0.0003 Lux @ (F1.2, AGC ON, sensitivity × 256) Color: 0.14 Lux @ (F1.4, AGC ON), 0.0004 Lux @ (F1.4, AGC ON, sensitivity × 256) B/W: 0.01 Lux @ (F1.2, AGC ON), 0.00003 Lux @ (F1.2, AGC ON, sensitivity × 256) B/W: 0.014 Lux @ (F1.4, AGC ON), 0.00004 Lux @ (F1.4, AGC ON, sensitivity × 256)
	Shutter Time	NTSC: 1/60 s to 1/100,000 s
	Lens	2.8 - 12 mm @ F1.4; Angle of view: 92° - 27.2°
	Lens Mount	Φ14
	Auto Iris	DC drive
	Angle Adjustment	Pan: 0 - 355°, Tilt: 0 - 80°, Rotation: 0 - 355°
	Day & Night	IR cut filter with auto switch
	Horizontal Resolution	560 TVL (Color), 600 TVL (B/W)
	Synchronization	Internal / Power synchronization
	Video Output	1Vp-p composite output (75 Ω / BNC); Test monitor out [1Vp-p composite output (75 Ω / BNC), device line]
S/N Ratio	More than 52 dB	
Menu	Camera ID	On / Off (15 letters, adjusted position)
	Auto Gain	Low / Middle / High
	D/N Mode	Auto / Day / Night
	Auto White Balance	Auto 1 / Auto 2 / Manual / Auto control
	Privacy Mask	On / Off, maximum 8 zones
	Motion Detection	On / Off
	BLC	On / Off
	DWDR	Indoor / Outdoor / Off
Language	English / Chinese	
Video	Gamma Correction, Digital Zoom, Digital Noise Reduction, POS/NEG, Mirror, Resolution, Y, C, Blemish Detection	
General	Operating Conditions	-10 °C - 60 °C (14 °F - 140 °F); Humidity 90% or less (non-condensing)
	Power Supply	24 V AC ± 10%, 12 V DC ± 10%
	Power Consumption	4 W (Max. 4.5 W with IR cut filter on)
	Dimension	Φ 136 × 101 mm (Φ 5.35" × 3.89")
	Weight	500 g (1.10 lbs)

Accessories



DS-1229ZJ
Wall Mount

DS-2CC5173N-VF supports surface-mounting and flush-mounting by default.