



Day/Night H.264 2-Megapixel PoE IP Dome Camera



FCS-4041

H/W Version: 1

Product Overview

LevelOne FCS-4041 is the superb performance speed dome network camera offering 2-Megapixel or 1080P resolution with superb image quality. Adopting 18x optical zoom lens and 1/2.8" Sony Progressive Scan CMOS sensor. The IP66-rated housing protects the camera body against rain and dust and the wide temperature range (-40°C ~ 55°C) It is especially suitable for monitoring wide open indoor/outdoor spaces such as airports, highways and parking lots where high-level reliability and precision are always required.

2-Megapixel with H.264&MJPEG compression

The FCS-4041 supports high-performance H.264/MJPEG compression technology and offers extra

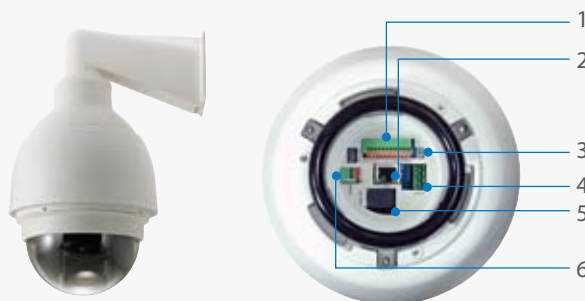
smooth video quality with resolution up to 60 fps @ 720p and 30 fps @ 1080p.

Powerful, feature rich IP Network Camera

FCS-4041 offers users the most advanced features, includes WDR, Digital Noise Reduction, PoE Plus(30W), SD/SDHC card slot, dual-codec, dual-stream, two-way audio, digital I/O, 802.1X authentication for network protection, Users can easily control the lens position via a mouse or a joystick to track the object of interest and set up to 256 preset positions for patrolling.

Bundled LevelOne IP CamSecure up to 64channels

The FCS-4041 comes bundled with the LevelOne IP CamSecure Surveillance Software. It allows users to monitor the cameras up to 64 channels simultaneously.



1. ALARM I/O
2. RJ-45 Connector
3. Factory Reset Button
4. Power
5. Micro SD Card Slot
6. Audio I/O

Key Features

- 1/2.8" Sony Progressive Scan CMOS in 2MP resolution
- Full HD(1920x1080)@30fps, 720P(1280x720)@60fps
- Supports H.264/MJPEG and dual streams
- 18x Optical Zoom Lens
- WDR (Wide Dynamic Range) for High Contrast Environments
- Removable IR-cut Filter for Day and Night Function
- Weather-proof IP66 rated Housing Built-in Heater & Fan
- 3D Privacy Masks for Private Area Protection
- Built-in 802.3at Compliant PoE Plus & AC24V
- Built-in Micro SD/SDHC card slot for local storage
- Bundled with 64-Channel LevelOne IP CamSecure

Relate Products



FCS-9464
IP CamSecure Pro Series Surveillance Management Software



GEP-0822
8-Port Gigabit PoE Plus Switch

Technical Specification

Camera

Image Sensor

1/2.8" Sony Progressive Scan CMOS sensor

Minimum Illumination

0.3 Lux / F1.6 (Color)

0.04 Lux / F1.6 (B/W)

Pan/Tilt/Zoom

Pan Travel: 360° endless

Tilt Travel: -10° ~ 190°

Optical Zoom: 18x

Pan speed: 9 ~ 87sec

Tilt speed: 4.2 ~ 45 sec

Auto pan mode

Auto patrol mode

Lens

18x optical zoom lens, f = 4.7 ~ 84.6 mm, F1.6 (wide), F2.8 (tele), auto focus, auto-iris, focus range: 1 m (wide), 1m (tele) to infinity

Removable IR-cut filter for day & night function

Angle of View

55.2°(wide) ~ 5.2° (tele) (horizontal)

Shutter Time

1/30 sec. to 1/30,000 sec. (NTSC)

1/25 sec. to 1/30,000 sec. (PAL)

Video

Video

Video Compression: H.264 / MJPEG

Video Streaming: Simultaneously H.264 + MJPEG / H.264 + H.264

Image Resolution and Frame Rate:

HDTV 1080P (1920x1080) @ 30/25 fps

HDTV 720p (1280x720) @ 60 fps

Image Settings

- Adjustable image size, quality and bit rate
- Time stamp and text caption overlay
- Flip & mirror
- Configurable brightness, contrast, saturation, sharpness, white balance and exposure
- AGC, AWB
- WDR (Wide Dynamic Range)
- BLC (Backlight Compensation)
- Supports 3D Privacy Masks
- Digital Slow Shutter and 2D/3D Noise Reduction

Audio

Audio streaming

Two-way

Input/output

Line out, Line in/Mic in

Audio Compression:

G.711/G.726

Networking

Interface: 10/100Mb Ethernet (RJ-45)

Protocols: IPv4/v6, TCP/IP, UDP, RTP, RTSP, HTTP, HTTPS, ICMP, FTP, SMTP, DHCP, PPPoE, UPnP, IGMP, SNMP, IEEE 802.1x, QoS, ONVIF

User Account: 20

Alarm and Event Management

Up to 10 of motion detection zone

Four D/I and two D/O for external sensor and alarm

Event notification using HTTP, SMTP or FTP

On-board Storage

Micro SD/SDHC slot, support up to 32GB

Security

User Account and Password Protection

General

Hardware

Flash ROM: 128MB

SD RAM: 256MB

Dimension

191.97 × 282.11 mm (7.55 × 11.1 inches)

Weight

2.32 kg (5.11 lbs)

Housing

Weather-proof IP66-rated housing

LED Indicator

System power and status indicator

System activity and network link indicator

Power

802.3at & AC24V (Heater needs powered by AC24V)

Power consumption: Max. 65 W (with heater)

Approvals

CE, FCC, RoHS Compliant

Operating Environments

Temperature: -40°C ~ 50°C (AC 24V with heater)

Temperature: -10°C ~ 50°C (PoE Plus, without heater)

Viewing System Requirements

Operating system

Microsoft Windows 2000, XP, Vista, 7

Web browser

Mozilla Firefox, Safari, Internet Explorer 6.x or above

Cell phone viewer

3GPP player

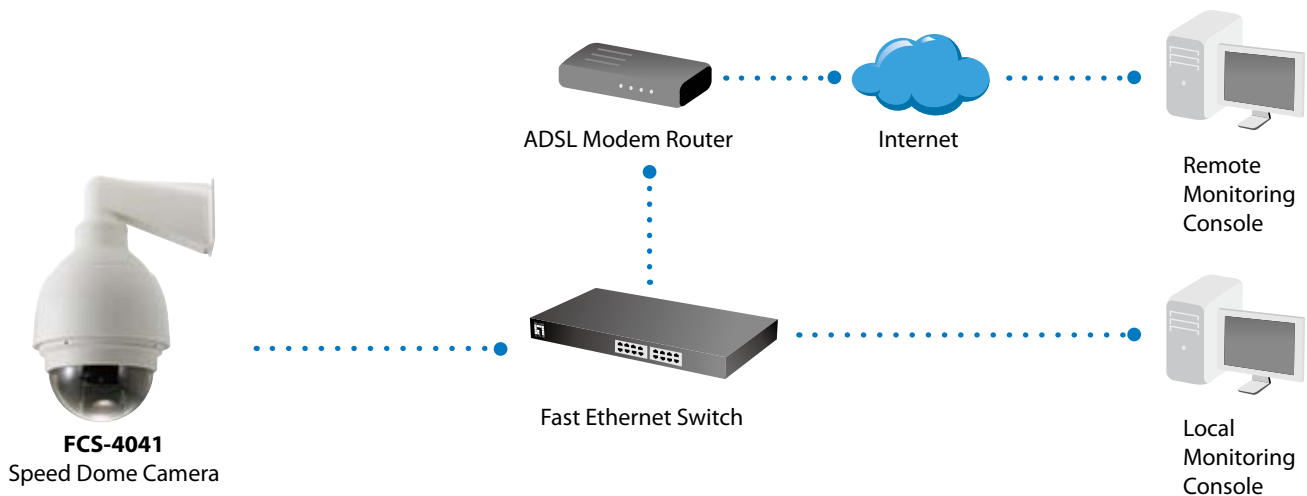
Stream player

Real Player 10.5 or above

Quick Time 6.5 or above

Applications

Product Diagram



Order Information

FCS-4041: Day/Night H.264 2-Megapixel PoE IP Dome Camera

Package Content

FCS-4041, Power Adapter, Wall Mount kit, Dome Cover, Screw kit
CD Manual/Utility, Quick Installation Guide

Optional Accessories



All mentioned brand names are registered trademarks and property of their owners. Technical specifications are subject to change without notice.

© Copyright Digital Data Communications GmbH. All Rights Reserved.