

Scanner

Epson Perfection™ V300 PHOTO

Weight - Approx. 2.8kg



To use the USB port, consult the documentation provided with your PC for further information about USB connectivity. Please note that errors may occur if non-standard cables or multiple hub connections are used.

Scanning Speed Data Patterns
The thumbnail images below show the scanning patterns used to determine scanning speed specifications.



^1
Line Art
(Memo)

^2
Photo (Photo courtesy of
ISO/JIS-SCID. Reprinted by
permission)

System Configuration of Scanning Speed
CPU: Pentium 4, 3.2GHz
RAM: 1GB
OS: Windows XP Home Edition
Soft: Adobe Photoshop 7.0E

Scanning speed test results vary according to system configuration, dpi setting, and scan mode setting. However, documents and photos other than those pictured above can be substituted without significantly affecting test results.

As an international ENERGY STAR Partner, EPSON has determined that this product meets the International ENERGY STAR programme for energy efficiency.



EPSON is the registered trademark of SEIKO EPSON CORPORATION. All other product names and other company names used herein are for identification purpose only and may be the trademarks or registered trademarks of their respective owners. EPSON disclaims any and all rights in those marks. Scan/Print samples shown herewith are simulations. Specifications are subject to change without notice.

EPSON
EXCEED YOUR VISION

www.epson.com.sg

SPECIFICATIONS

| | |
|---|--|
| BASIC | |
| SCANNER TYPE | Flatbed color image scanner |
| OPTICAL RESOLUTION | Main 4800dpi x Sub 9600dpi |
| DOCUMENT SIZE | |
| REFLECTIVE | 216mm x 297mm (A4+Letter) |
| TRANSPARENCY | 32.9mm x 244.4mm (35mm Strip film 6 frames, 35mm Slides 4 frames) |
| INTERFACE | |
| | USB2.0 Hi-speed |
| CONFIGURATION | |
| PHOTOELECTRIC DEVICE | Alternate 12 line colour CCD with On Chip Micro Lens 122,400 pixels (10,200 x 4 lines x 3 colours) |
| LIGHT SOURCE | White LED |
| SUB-SCANNING METHOD | Fixed document and moving carriage |
| PERFORMANCE | |
| OUTPUT RESOLUTION | 50 to 6400, 9600, 12800dpi (50 to 6400dpi in 1 dpi increment) Internal 48 bit (281.5 trillion colours) Output 48 bit (281.5 trillion colours) |
| COLOUR | 24 bit (16.7 million colors) 16 bit (65,536 grayscale levels) 8 bit (256 grayscale levels) 1 bit Monochrome |
| SCANNING SPEED | |
| REFLECTIVE SCANNING | Speed Priority Scanning Mode Best Mode |
| MONOCHROME ^{^1} | A4 600dpi 2.88msec/line 25 sec 30 sec |
| 24BIT COLOUR ^{^2} | A4 600dpi 3.52msec/line 29 sec 36 sec |
| | A4 1200dpi 10.08 msec/line 102 sec 128 sec |
| FILM SCANNING | |
| | Speed Priority Scanning Mode Best Mode |
| 35MM POSITIVE FILM | 4800dpi 8.53msec/line 63 sec 86 sec |
| 35MM NEGATIVE FILM | 4800dpi 12.3msec/line 87 sec 118 sec |
| FUNCTIONS | |
| IMAGE QUALITY ENHANCER | PRINT Image Matching II Image Enhancement Function: Backlight Correction Colour Restoration Dust Removal Grain Reduction Selectable Tone of Auto Exposure Unsharp Mask with Noise Reduction De-Screening with Document Type Optimizer Tone Curve Adjustment with Histogram |
| EASY SCANNING | 4 Easy Push Buttons linked to Epson Event Manager Multiple Page Scan to PDF with Scanner Buttons High Compression PDF Text Enhancement Colour Enhance and Dropout Features Correct Document Skew Stand-Alone Application and Scan to File Feature Multi Purpose User Interface Multi Document Auto Detection Multi Document Auto Cropping Auto Skew Correction Auto Photo Orientation Multi Marquee Film Scanning Thumbnail Preview |
| SUPPORTED PLATFORMS | |
| USB1.1 & 2.0* | Microsoft® Windows® 2000 Professional /XP Home Edition /XP Professional /XP Professional x64 Edition / Windows Vista™ Mac OS® X 10.3.9 or later (Universal version)** |
| * USB2.0 Host Driver by Microsoft is required ** iMac/iBook, Power Book/ Power Macintosh of USB2.0/F standard equipped | |
| ENVIRONMENTAL CONDITIONS | |
| TEMPERATURE | 10°C to 35°C (Operating) -25°C to 60°C (Storage) |
| HUMIDITY | 10% to 80% without condensation (Operating) 10% to 80% without condensation (Storage) |
| ELECTRICAL SPECIFICATIONS | |
| VOLTAGE | (AC100V model) AC100-120V 50-60Hz (AC200V model) AC220-240V 50-60Hz |
| POWER CONSUMPTION | Operating: 12.0W Ready Mode: 5.5W Sleep Mode: 3.7W Power Off: 0.5W |

Dealer's Stamp

August 2008

EPSON SINGAPORE PTE LTD

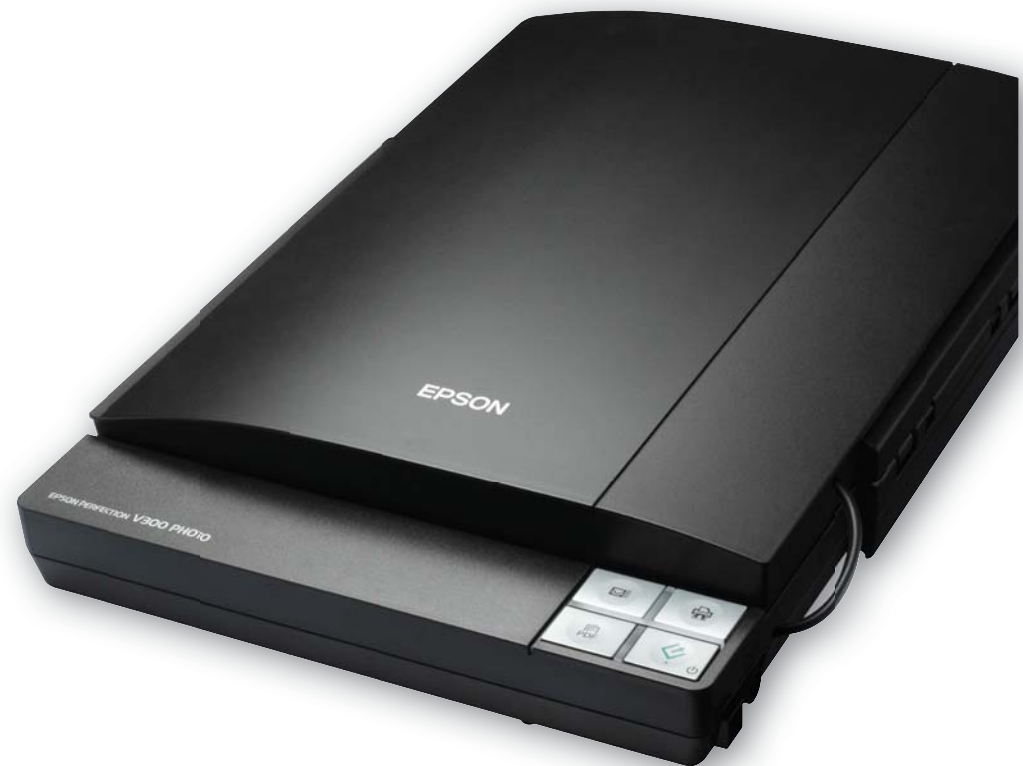
1 HarbourFront Place #03-02
HarbourFront Tower One Singapore 098633
Tel: (65) 6586-5500 Fax: (65) 6271-9755
Epson Helpdesk: (65) 6586-3111

EPSON SERVICE CENTRE

25 Bukit Batok Street 22
Allied Technologies Limited Building, Level 2
Singapore 659591

EPSON

EXCEED YOUR VISION



Scanner

Epson Perfection™ V300 PHOTO

Perfect Combination for a Complete Home Digitisation Solution

- **Zero Warm-up Time and Customisable Functions**
 - ReadyScan LED Technology
 - Customisable One-touch Operation
- **High Quality Film Scanning**
 - Built in TPU with film holder storage
 - 4800dpi, 3.2 OD value, 48 bits colour and embedded ICC Profile
- **Photo Enhancement Functions**
 - Epson Scan ver 3.5



Scanner

Epson Perfection™ V300 PHOTO

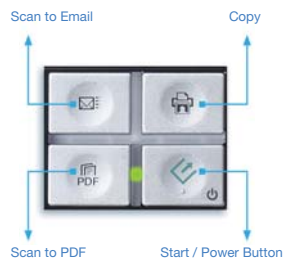
Instant Effortless Film and Photo Scanning with User-friendly Image Enhancement Functions

Easily scan, archive and share your entire film and photo collections with Epson Perfection™ V300 Photo.

Zero Warm-up Time, Eco-friendly Features

With Epson ReadyScan LED Technology, scanning starts instantly with no warm-up time required. As such, power consumption is very low. In addition, it is mercury free which makes it an environmentally friendly technology.

Instant Customisable One-touch Operation



Four one-touch buttons on the control panel are preset with Copy, Start, Scan-to-Email and Scan-to-PDF functions. You may further customise these functions through

Epson Event Manager to suit your personal preferences. An indispensable feature for regular repetitive scanning tasks.



Effortless Film Scanning

Easily back up and digitise your collection of films and negatives with the built-in TPU. The film holder holds a capacity of 6 frames of 35mm filmstrips or 4 frames of 35mm mounted slides.

Unleashed Your Creativity

The Epson Perfection™ V300 Photo comes with Epson Scan v. 3.5 which is a powerful and easy-to-use photo and document editing software.

It includes the following tools:

Colour Restoration Feature

Restores original colours of old faded photos to make them look new again.



Dust Removal Tools

Removes flaws such as dust and scratches from defective photos.



Backlight Correction Features

Automatically analyses and makes necessary adjustments to the brightness, sharpness and colour balance of each image.



Text Enhancement Feature

Enhances sharpness of text when scanning text documents. Primary colours of Red, Green and Blue can also be separately enhanced or dropped from a scanned document.

Remarkable Scan Quality

With a high resolution of 4800dpi and 3.2DMax optical density, be assured that every detail on your films and photos will be captured and preserved. Coupled with 48 bit colour depth and embedded ICC profile, each image will be reproduced with amazingly vivid and accurate colours.



sRGB scan image on sRGB display Adobe RGB scan image on sRGB display

In Epson Scan 3.5, colour characteristics of scanner image are made clear by embedding ICC profile into the image file. As a result, Adobe RGB colour reproduction will be simulated correctly on sRGB display.

Added Document Digitisation Functions

High Compression PDF

Greatly reduces file size of scanned documents while retaining text readability at the same time.

Newssoft MaxReader 4.5 Lt*

Easily convert scanned documents containing English and both simplified and traditional Chinese languages into editable text.

Arcsoft MediaImpression 1

Easily manage and share your photos, music and videos.



*MaxReader supports Windows operating system only.



Partners in Perfection



Epson Stylus Inkjet Printers offer unsurpassed quality and value for every printout.

- Assured durability with Epson DURABrite™ Inks
- Amazing print quality with optimised 5760dpi
- Epson INKdividual™ Inks for maximum savings