



Lenovo® recommends Windows® 7 Professional.

THINKPAD
X220 TABLET



THE LENOVO® THINKPAD® X220 TABLET

THE MOBILITY OF A TABLET THE PERFORMANCE OF A FULL-POWERED NOTEBOOK
PEN. FINGER. KEYBOARD

The ThinkPad® X220 Tablet combines the sophisticated performance and durability of a Lenovo® ThinkPad laptop with the latest innovations in multitouch computing. This performance-oriented ultraportable Tablet is a thin & lightweight, offers pen, finger and keyboard input options. And, it comes with bright 300 nit, IPS displays for vivid colors and a nearly 180 degree viewing angle. This slim, ultraportable Tablet comes with second generation Intel® Core™ processors for up to 20% faster CPU performance and Intel® HD graphics for a 2x graphics boost. Additionally, Lenovo has tuned this system to get even faster performance than a standard Windows laptop via Lenovo's Windows® 7 Enhanced Experience program.

The ThinkPad X220 Tablet provides an optional direct bonded outdoor panel with scratch resistant Gorilla glass for those who need pen-based computing outdoors. The X220 Tablet also replaces the conventional TouchPad with the more advanced, innovative buttonless touchpad which is 45% larger than before. Further, the X220 Tablet has been designed to pass eight MIL-SPEC tests for durability and reliability, giving users peace of mind when working out doors and allowing users to work and be productive in any environment.

TOP REASONS TO OWN

- Pen, finger or keyboard based versatile computing
- Intuitive Multitouch hardware controls with Lenovo SimpleTap 2.0
- Enhanced communication and multimedia experience
- Up to 16 hour Battery with the X Series battery pack
- Outdoor viewable panel with scratch resistant Gorilla glass (optional)
- Full Powered second generation Intel® Core™ i7 processors

LENOVO ENHANCED EXPERIENCE 2.0 FOR WINDOWS® 7. FASTER AND OPTIMIZED FOR BUSINESS.

Lenovo Enhanced Experience 2.0 for Windows® 7 uses RapidBoot technology to start your PC on average 20 seconds faster than a typical Windows® 7 computer*. And with superior web conferencing and robust security features, you'll benefit from increased productivity at the office. Find out more at www.lenovo.com/win7ee

*Compares averaged data from Lenovo EE 2.0 PCs with averaged data from 42 competitor products of similar configuration. Testing conducted by CNET Labs, Beijing in November 2010, using the independent Microsoft VTS tool to measure start-up, shutdown, resume and other Windows® 7 performance measurements. Data from competitor and Lenovo PCs were averaged and compared to calculate the claims used. Performance will vary by model and configuration.



Lenovo® recommends Windows® 7 Professional.

THINKPAD
X220 TABLET



PRODUCTIVITY ON-THE-GO

The ThinkPad® X220 Tablet is engineered to keep up with the lifestyle of today's mobile professionals.

- Full Powered second generation Intel® Core™ processors
- Intel® HD Graphics with 2x faster graphics performance
- Starting at less than 4lbs
- Lenovo's Turbo Boost+ optimizes Intel® TurboBoost for even greater performance boosts

ENHANCED COMMUNICATIONS FEATURES

Voice and Video calls – the comfort of a notebook and the audio quality of a traditional telephone

- Choose between Private Chat mode that eliminates background noise when one person is talking or Conference Call mode that picks up sounds from across a room when many participants are around a conference table
- Keyboard noise suppression minimizes key clicks from being heard when typing during voice calls
- HD Camera, HD Microphones & HD Displays

THINKPLUS® SUPPORT

Lenovo's award winning Warranty Service and Support optimize productivity and end-user satisfaction by helping you concentrate more on your business objectives.

- **ThinkPlus Priority Onsite Warranty***
Saves time, reduces costs and maximizes productivity, by providing you with faster, 24x7, direct access to advanced-level skilled technicians for hardware and software issues.
- **ThinkPlus Warranty Onsite NBD Upgrades**
Maximizes PC uptime and productivity by providing convenient and fast repair services at your place of business.
- **Warranty Extensions (1 year to 3 years)**
Helps accurately budget for PC expense, protects your investment and lowers the overall TCO with a fixed-term, fixed-cost service solution.

OUTSTANDING BATTERY BACKUP

The ThinkPad X220 Tablet delivers exceptional battery life, for productivity on-the-go.

- Up to 16 hours with the all new external battery pack
- Up to 9 hours with the 9-cell battery on the ThinkPad X220 Tablet
- Up to 30% longer battery life with the Low-Power Multimedia Mode

BEST-IN-CLASS USER EXPERIENCE

The ThinkPad X220 Tablet enhances productivity by providing a more comfortable user experience

- Improved hinge-based latching design for greater durability and reliability
- ThinkReader book and PDF reader software
- 45% larger touchpad with new buttonless design
- New Keyboard enhancements with larger Escape and Delete keys
- Physical Microphone mute button so that you know for sure that the microphone is muted during a conference call

THINKPLUS PROTECTION

Lenovo's Protection Services help you avoid unbudgeted repair costs, secure your data, save money and achieve peace of mind.

- **ThinkPad® Protection (TPP)**
Provides coverage for unexpected damage, unintentional drops and minor spills, thereby helping you eliminate unplanned repair costs.
- **Hard Disk Drive Retention**
Allows you to retain the hard drive, should it happen to fail, thus helping you protect your valuable data.

* Not available in all regions



Lenovo® recommends Windows® 7 Professional.

**THINKPAD
X220 TABLET**

The Lenovo® ThinkPad® X220 Tablet Specifications

DESCRIPTION	X220 TABLET	
Processors	Intel® Core™ i7-2620M Processor (2.7GHz, 4MB L3 Cache) Intel® Core™ i5-2520M Processor (2.5GHz, 3MB Cache)	Intel® Core™ i7-620M Processor (2.7GHz, 3MB L3 Cache) ¹ Intel® Core™ i3-2310M Processor (2.1GHz, 3MB L3 Cache) ¹
Preloaded OS (Operating System)	Genuine Windows® 7 Home Basic ¹ Genuine Windows® 7 Home Premium Genuine Windows® 7 Professional	
Display	12.5" HD, 300 NIT WW (IPS), 2 finger touch/5 finger gesture, Infinity Glass 12.5" HD, 300 NIT WW (IPS), Corning Gorilla direct bond, pen	
Memory	Up to 8GB	
Weight	3.88lbs (1.76Kg) with 4 cell battery	
Form Factor	305.0mm x 228.7mm x 27-31.3mm	
I/O (Input/Output) Ports	Display Port 3 USB 2.0 port (1 Always On port)	
Optical Drive	UltraBase™ with Multiburner with Write Disabled ² UltraBase™ with Multiburner	
Multimedia	Dual digital microphone	
Graphics	Intel® Integrated HD Graphics	
Internal PCIe Slots	1 Full and 1 Half	
WiMAX/WiFi	Intel® Centrino® Advanced-N + WiMAX 6250 (Kilmer Peak) 2x2 AGN	
WLAN	Intel® Centrino® Ultimate-N 6300 (Puma Peak) 3x3 AGN (performance) Intel® Centrino® Advanced-N 6205 (Taylor Peak) 2x2 AGN (performance)	
WWAN	Gobi™ 3000 Sierra Wireless EV-DO/HSPA WWAN Minicard Ericsson HSPA + WWAN Minicard (F5521gw) LeadCore TD-SCDMA WWAN Minicard (LC5730D) Huawei EV-DO WWAN Minicard (EM660)	
HDD	160GB Hard Disk Drive, 7200rpm ² 250GB Hard Disk Drive, 5400rpm 250GB Hard Disk Drive, 7200rpm with limited OPAL FDE Technology ² 320GB Hard Disk Drive, 5400rpm	
SSD	4GB Solid State Flash Drive, Serial ATA ² Intel® 80GB Micro Solid State Drive, Serial ATA ³ 128GB Solid State Drive, Serial ATA Intel® 160GB Solid State Drive, Serial ATA	
Webcam	720p HD camera	
Battery Life	Up to 18 hours with the 6 Cell battery and the ThinkPad external battery pack Up to 9 hours with a 6 cell battery	
Warranty	FPO	
Price	FPO	

¹ Actual availability in each country may vary.
² Special Bid and CTO only. No standard POR models.
³ 80GB mSATA SSD fits in the WWAN slot. As a result, it is not available with WWAN.





Lenovo® recommends Windows® 7 Professional.

THINKPAD X220 TABLET

The Lenovo® ThinkPad® X220 Tablet Software

SUPPORTED TVT TOOLS

- ThinkVantage® Toolbox v 1.4
- Lenovo® ThinkVantage Tools v2.0
- ThinkVantage Rescue & Recovery® 4.3
- ThinkVantage Product Recovery 9.0
- ThinkVantage Password Manager 4.0
- ThinkVantage Utilities Musashi 1.0
- ThinkVantage Access Connections™
- ThinkVantage System Update 4.0
- ThinkVantage SimpleTap
- Hardware Password Manager
- ImageUltra™ Builder
- System Migration Assistant™ 6.0
- Client Security Software 8.3

PRE-LOADED APPLICATIONS

- Microsoft® Office Starter 2010
- Microsoft® Live Essentials
- Norton® Internet® Security (30-day trial)
- Microsoft® Touchpad (X220 Tablet Only)
- Japan i-Filter
- Skype™ Application 4.2
- Corel DVD Movie Factory
- Corel Burn Now
- Intervideo® WinDVD®

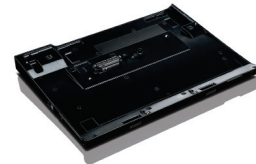
Notebook Options



Lenovo 90W Ultraslim AC/DC Combo Adapter (41R4493)



ThinkPad Battery 52 3-cell (0A36285)
ThinkPad Battery 52++ 6-cell (0A36286)
ThinkPad Battery 19+ 6-cell Slim External (0A36280)



ThinkPad Ultrabase™ Series 3 (0A33932)



Lenovo Power Hub (57Y4600)



(55Y3709) 1GB PC3-10600
(55Y3710) 2GB PC3-10600
(55Y3711) 4GB PC3-10600



ThinkPad 12W Sleeve (51J0476)
ThinkPad X220 Tablet Sleeve (0A33883)



Tablet Tether (41U4820)



Digitizer Pen (41U3143)



Kensington MicroSaver Cable Lock from Lenovo (73P2582)

1800 659 www.lenovo.com/think

©2011 Lenovo. All rights reserved. Availability: Offers, prices, specifications and availability may change without notice. Lenovo is not responsible for photographic or typographic errors. Warranty: For a copy of applicable warranties, write to: Warranty Information, 500 Park Offices Drive, RTP, NC, 27709, Attn: Dept. ZPYA/B600. Lenovo makes no representation or warranty regarding third-party products or services. Trademarks: Lenovo, the Lenovo logo, Rescue and Recovery, ThinkStation, ThinkVantage and ThinkVision are trademarks or registered trademarks of Lenovo. Microsoft, Windows and Vista are registered trademarks of Microsoft Corporation. Intel, the Intel logo, Intel Core, Core Inside, Xeon and Xeon Inside are registered trademarks of Intel Corporation in the U.S. and other countries. Other company, product and service names may be trademarks or service marks of others. Visit Lenovo.com/safecomputing periodically for the latest information on safe and effective computing.

