

lenovo® **FOR**
THOSE™
WHO DO.

**IT HAS THE BODY OF A TABLET.
AND A HEAD FOR BUSINESS.**

Transfer media files and documents
from USB keys and SD cards

View and edit MS Office documents



Project 1080 video to External Displays

Jot down handwritten notes

Handwriting to text conversion

Securely connect to corporate e-mail

From the makers of the ThinkPad® comes an exciting Android 3.1 Tablet that offers a superior multimedia and entertainment experience. The Lenovo® ThinkPad Tablet. Unlike the other Tablets, it comes with additional features to help business professionals to do more on the go and also allows IT managers support them easily, no matter where they go. This means, better management of multiple devices, more customization options, higher productivity, and more importantly, enhanced security. So, if you are looking for a Tablet built for business, then it has to be the ThinkPad Tablet.

For Business Professionals:

- Stay connected to colleagues and friends with easy e-mail, pre-installed social networking applications; a 2MP front-facing camera for video calls and Social Touch—a unique application that pulls it all together in an easy to use widget
- View and edit Microsoft® Office documents with Documents to Go by DataViz
- Write naturally and jot down handwritten notes, that automatically convert to handwritten text, mark

up documents, and draw pictures with the accurate pressure sensitive ThinkPad Tablet Pen*

- Comfortably type long e-mails, create documents and enter data in forms or spreadsheets, thanks to the convenient ThinkPad Tablet Keyboard Folio* with built-in optical TrackPoint®

For IT Managers:

- Easily deploy and provision multiple devices with Lenovo's custom imaging service and zero touch deployment solution
- Provide easy and secure e-mail access with Good Technologies (certified) and Cisco VPN support
- Control device security with Active Directory Password, Microsoft® ActiveSync integration, encrypted user data and SD Cards
- Purchase and deploy corporate applications via company unique Application Shops (supported by Lenovo)

*May not be available on all models.

For more information

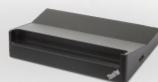
www.lenovo.com

SPECIFICATIONS

Operating System	WiFi Options	Display	
Android 3.1	WiFi or WiFi and 3G	Size: 10.1" (257mm), Screen resolution: 1280x800, Automatic brightness control, multitouch technology, Thin Film Transistor Liquid Crystal Display (TFT LCD) technology, Supports for ThinkPad Tablet Pen input	
Battery Life	Processor	Display Technology	
8.7hrs with WiFi	NVIDIA® Tegra™ 2 dual-core ARM processor	IPS Technology (178° viewing angle), Corning® Gorilla® glass	
Memory	Internal Storage	Integrated Camera	Connectors
1GB	16GB, 32GB or 64GB (depending on Tablet)	Front-facing camera – 2MP, Rear-facing camera – 5MP	One mini HDMI connector, One USB 2.0 connector, One micro USB connector, One dock connector
Wireless Features	Specs and Dimensions	Size	Battery
Wireless LAN, Bluetooth® 2.0, 3G on some Tablets	Weight: 742.2gm WiFi, 756.1gm 3G Thickness: 14.5mm	Width: 260.4mm (10.3) Depth: 181.7mm (7.2)	24.1W 3250 mAh Li-Polymer battery
Sensors		Card Slot or Card Reader	
Accelerometer, Gyroscope, Assisted GPS, Ambient light sensor		SIM card slot, 3-in-1 media card reader	
Preloaded Software*			
<ul style="list-style-type: none"> • Documents To Go: View and edit MS Word, PowerPoint, Excel documents. View Adobe® Acrobat® documents. • MyScript Notes Mobile: Takes advantage of the ThinkPad Tablet Pen to convert handwriting to typed text. • USB Data Transfer Utility: Easily transfer files from external storage via the built-in full-size USB port and this easy to use software. • Lenovo Launch Zone: Provides access points to commonly used applications. • Lenovo SocialTouch: View events conducted through various widgets and applications on your Tablet, such as PopMail, Google Maps and Google Calendar. • Favorite Apps: Enables you to manage your favorite applications. • User Data and SD Card Encryption: Protects your confidential information stored on your flash media card. • WiFi Import or Export 			

*Not all software available in all countries.

RECOMMENDED ACCESSORIES



THINKPAD TABLET DOCK (0A33953)

- Instant charging, data synchronization, and device expansion
- Holds Tablet in an ergonomic, vertical reading position
- Ports include: Micro USB, HDMI, Stereo out, Microphone in and a USB 2.0
- Easily configured with ThinkPad USB Keyboard or ThinkPad Edge wireless keyboard mouse combo



THINKPAD KEYBOARD FOLIO 0A36370

- Travel-ready folio with a wired keyboard
- Optimized for Android
- Easy navigation with the optical TrackPoint®

LENOVO THINKPLUS® SERVICES

Protect Your ThinkPad Tablet with a true commercial portfolio of services that let's you concentrate on getting things DONE

- Fixed term, fixed cost coverage that meets your refresh cycles and critical support needs
- 24x7 access to advanced level technicians, making your priority our priority
- Protection against unexpected operational or structural damage due to drops, minor spills or integrated screen damage so your Tablet is protected while you're on-the-go

Services Options

- Custom Imaging/Asset Tagging
- 2yr and 3yr Warranty Extensions (total duration)
- Priority Support
- ThinkPad Protection
- On-site Service Delivery (where available)

For more information
www.lenovo.com

lenovo FOR
THOSE WHO DO.™

*Specific view per benchmark shows 31% improvement over previous model. All products and offers are subject to availability. Lenovo reserves the right to alter product offerings and specifications at any time, without notice. Lenovo makes every effort to ensure accuracy of all information but is not liable or responsible for any editorial, photographic or typographic errors. All images are for illustration purposes only. For full Lenovo product, service and warranty specifications visit www.lenovo.com. The following are registered trademarks of Lenovo: Lenovo, the Lenovo logo, ThinkPad, ThinkPlus and TrackPoint. Microsoft and Windows are registered trademarks of Microsoft Corporation in the U.S. or other countries. Intel, Core Inside, Intel Inside and the Intel Inside logo are registered trademarks of the Intel Corporation in the U.S. or other countries. Other company, product and service names may be trademarks or service marks of others. ©2011 Lenovo. All rights reserved.

WW_WW_05_Q2_12_23191