



10 dBi Outdoor PoE Access Point TEW-738APBO (v1.0R)

- Wireless N300 building-to-building networking (2.4 GHz)
- Supports Access Point (AP), Wireless Distribution System (WDS), Repeater, and CPE + AP modes
- IP67 rated aluminum housing
- Built in 10 dBi directional sector antenna

TRENDnet's 10 dBi Outdoor PoE Access Point, model TEW-738APBO, provides Wireless N300 building-to-building connectivity for clear line of sight distances of up to 8 km (5 miles)*. A variety of installation scenarios are facilitated with Access Point (AP), Wireless Distribution System (WDS), Repeater, and CPE + AP modes. The rugged aluminum IP67 rated housing comes with wall and pole mounting hardware.

Performance



Multi-Mode Support

Supports Access Point (AP), Wireless Distribution System (WDS), WDS + AP, Repeater, and CPE + AP modes



Wireless N300 (2.4 GHz)

Compliant with 802.11n/g/b technology (2.4 GHz) with data rates up to 300 Mbps*



Outdoor Rated

Durable aluminum enclosure with an IP67 outdoor weather rating



Directional Antenna

Built in 10 dBi directional antenna



Distance Rating

When networked to the same unit, this unit is rated for connecting over clear line-of-sight distances of up to 8 km (5 miles)*



Power over Ethernet (PoE)

Comes with a proprietary PoE injector, so that it can connect a regular non-PoE switch



Logs

Real time logs and statistics help troubleshooting



Encrypted Wireless

Support for wireless encryption of up to WPA2



Multiple SSIDs

Create up to seven additional SSIDs



Compatibility

Compatible with legacy wireless devices

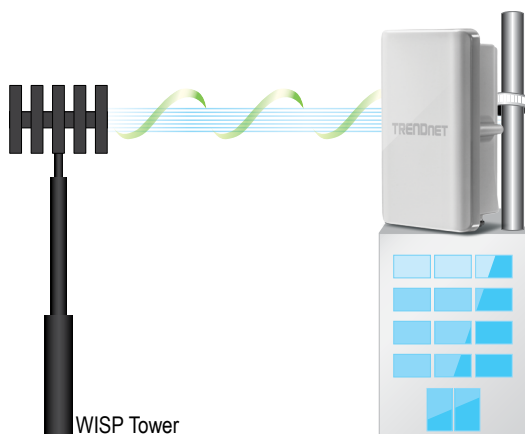


Mounting Hardware

Pole and wall mount hardware included

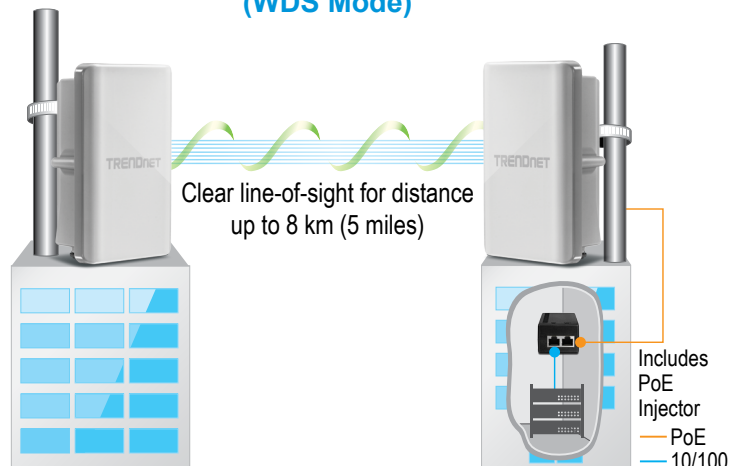
Networking Solution

Wireless Internet Service (CPE Mode)



OR

Building-to-Building (WDS Mode)



Clear line-of-sight for distance up to 8 km (5 miles)

Specifications

Standards

- IEEE 802.3
- IEEE 802.3u
- IEEE 802.1d
- IEEE 802.1p
- IEEE 802.1Q
- IEEE 802.1X
- IEEE 802.11d
- IEEE 802.11e
- IEEE 802.11f
- IEEE 802.11h
- IEEE 802.11i
- IEEE 802.11b
- IEEE 802.11g
- IEEE 802.11n (2.4GHz up to 300 Mbps)

Hardware Interface

- 1 x 10/100 Mbps (proprietary PoE) port**
- Reset button
- LED indicators

Special Features

- IP67 weather rated
- 802.1Q VLAN assignment per SSID
- DDNS support for dyn.com, dhs.org, osd, tzo.com
- Schedule radio on/off time policy

Access Control

- Wireless encryption: WEP, WPA/WPA2-PSK, WPA/WPA2-RADIUS
- Firewall (CPE Mode): NAT, Virtual Server, DMZ Host, PPTP/L2TP/IPsec VPN Passthrough
- Access Controls: MAC, IP Filter, Layer 2 Client Isolation, Per-SSID client limiting
- 802.1Q VLAN

QoS

- WMM
- Diffserv (DSCP)/ToS
- 802.1p/CoS

Operation Modes

- Access Point (AP)/WDS+AP
- Wireless Distribution System (WDS)
- Repeater
- CPE + AP (WISP)

SSID

- Up to 8 SSIDs

Internet Connection Types (CPE mode)

- Dynamic IP (DHCP)
- Static IP (Fixed)
- PPPoE (Dynamic IP/Static IP)
- PPTP (Dynamic IP/Static IP)

Management/Monitoring

- Local/remote web based management (HTTP, HTTPS)
- Local/remote CLI based management (Telnet, SSH)
- SNMP v1/v2c/v3
- SNMP Trap
- MIB II
- Upgrade firmware
- Backup/restore configuration
- Event logging
- Reboot
- Restore to factory defaults
- Ping test
- Ping Watchdog

Routing

- Static
- Dynamic (RIP v1/2, OSPF)

Frequency

- FCC: 2.412 - 2.462 GHz
- ETSI: 2.412 - 2.472 GHz

Wireless Channels

- FCC: 1-11
- ETSI: 1-13

Modulation

- 802.11b: DBPK, DQPSK, CCK with DSSS
- 802.11g/n: BPSK, QPSK, 16-QAM, 64-QAM with OFDM

Media Access Protocol

- CSMA/CA with ACK

Antenna Gain

- 10 dBi internal sector antenna

Coverage

- 8 km (5 miles) clear line of sight

Wireless Output Power/Receiving

Sensitivity

- 802.11b: FCC/ETSI: FCC: 28 dBm (max.), ETSI: 10.6 dBm (max.)/-88 dBm (typical) @ 11 Mbps
- 802.11g: FCC/ETSI: FCC: 27 dBm (max.), ETSI: 10.7 dBm (max.)/- 74 dBm (typical) @ 54 Mbps
- 802.11n: FCC/ETSI: FCC: 28 dBm (max.), ETSI: 10.7 dBm (max.)/- 69 dBm (typical) @ 300 Mbps

EIRP

- FCC: up to 38 dBm (with built in 10 dBi antenna)
- ETSI: up to 20 dBm (with built in 10 dBi antenna)

Power

- Input: 100 - 220 V, 50 - 60 Hz, 0.6 A
- Output: 48 V, 0.5 A
- Consumption: 22 Watts max.

Operating Temperature

- -30 - 60° C (-22 - 140° F)

Operating Humidity

- Max. 99% non-condensing

Certifications

- CE
- FCC

Dimensions

- 215 x 122 x 66 mm (8.5 x 4.8 x 2.6 in.) (not including mounting bracket)

Weight

- 0.8 kg (1.8 lbs.)

Warranty

- 3 year limited

Package Contents

- TEW-738APBO
- CD-ROM (User's Guide)
- Multi-Language Quick Installation Guide
- Mounting hardware
- Proprietary PoE injector
- Water-proof RJ-45 plug (Network cable not included)
- Power adapter (48V, 0.5A)

* Effective wireless coverage may vary depending on the wireless device's output power, antenna gain, antenna alignment, receiving sensitivity, and radio interference. Additionally environmental factors such as weather conditions, physical obstacles, and other considerations may affect performance. For optimal results, we recommended consulting a professional installer for site survey, safety precautions, and proper installation.

** Recommended max. PoE cable length of 70 m.

