



Selectable Dual Band for video streaming and gaming

HD

Up to 450 Mbps for HD Video



Access point capability for adding wireless to a wired network

# Wireless N450 MediaBridge®/Access Point

DAP-1533

## Wireless N450 MediaBridge®/Access Point - Flexible networking solutions

Whether you're wanting to give high bandwidth to your Ethernet-ready devices in your entertainment system or you want to add wireless capability to your existing wired network, the Wireless N450 MediaBridge®/Access Point is perfect for you.

## Wireless Bridge Mode - Great for connecting your entertainment system to your existing wireless network

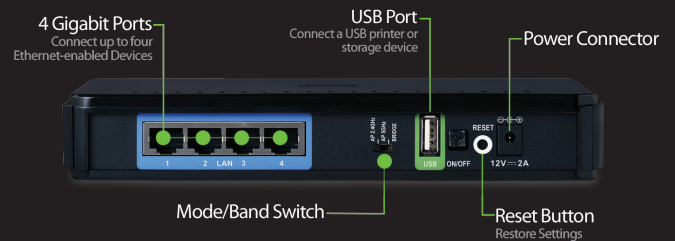
With 4 Gigabit Ports, you can connect any Ethernet-enabled devices such as cable/satellite boxes, game consoles, Internet-ready TV or Network Attached Storage (NAS) to your existing wireless network for blazing wired speeds.

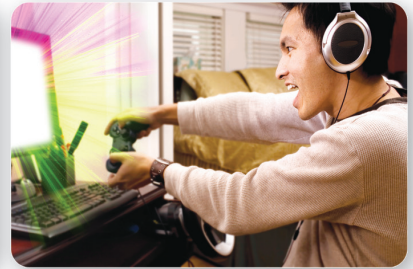
## Access Point Mode - Extend your existing wired network

Connect the Wireless N450 MediaBridge®/Access Point to an existing wired network to extend it wirelessly. Stream HD videos to the far corners of your home or play online games without any skipping or delays.

## Dual Band - Great performance for everything you do

The dual band technology in the Wireless N450 MediaBridge®/Access Point means you can select either 2.4GHz or 5GHz wireless signals to adjust for your different networking needs. You can do all you normally do with your network using the 2.4GHz band. The 5GHz band helps avoid interference by providing a clearer wireless band for HD signals.





## Features

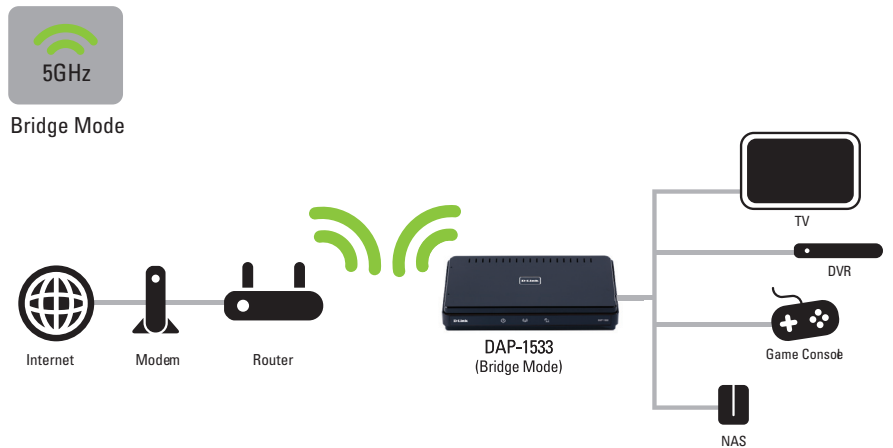
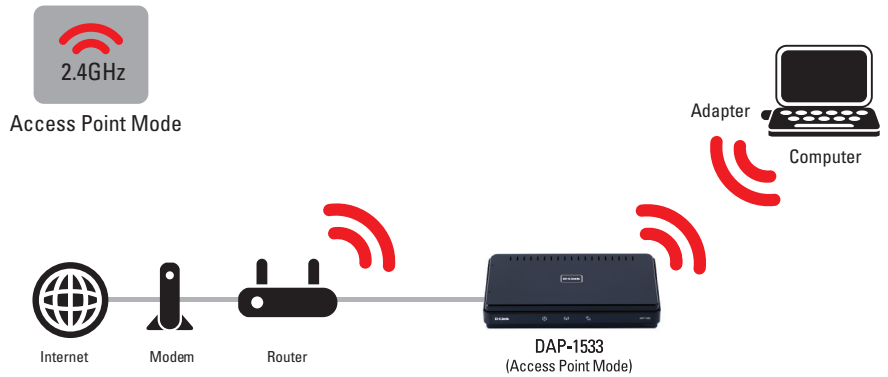
- + Up to 450Mbps<sup>1</sup>
- + Selectable Dual band 2.4GHz or 5GHz
- + 4 Gigabit Ethernet Ports
- + IEEE 802.11n/g/a Compliant
- + One-Touch AP Configuration
- + Built-in Network QoS
- + Supports Secure Wireless Encryption Using WPA™ or WPA2™ Security
- + WPS (Wi-Fi® Protected Setup™) for simple Push-Button Wireless Network Configuration
- + Supports IPv6
- + 24/7 Basic Installation Support<sup>5</sup>
- + 1-Year Limited Warranty<sup>6</sup>

## Think green

D-Link Green™ devices are about providing eco-friendly alternatives without compromising performance. They are designed to help conserve energy, protect our environment from harmful substances, and reduce waste by using recyclable packaging. Learn more, visit [www.dlinkgreen.com](http://www.dlinkgreen.com).

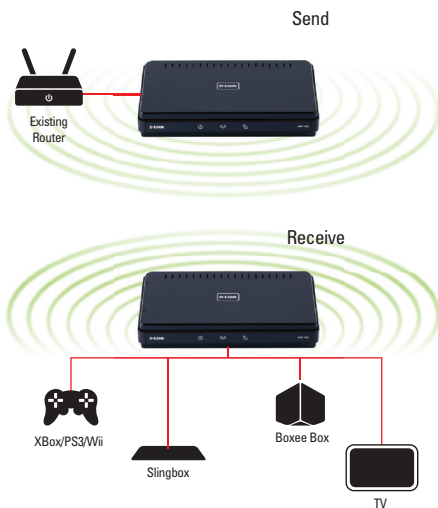
## Protecting the environment

- + Complies with the European Union's RoHS directive that restricts the use of certain hazardous materials
- + Uses soy ink and recyclable packaging to help reduce waste that goes into the environment



## Technical Specifications

With a second DAP-1533, create a powerful wireless bridge to connect up to four devices in your entertainment center at up to 450Mbps



In addition, with an existing router and the MediaBridge®/Access Point in this box, bridge to an entertainment center and connect up to four devices.

### STANDARDS

- + IEEE 802.11n
- + IEEE 802.11g
- + IEEE 802.11a
- + IEEE 802.3
- + IEEE 803.u
- + IEEE 802.3ab

### PHYSICAL INTERFACE

- + 4 10/100/1000 Gigabit Ethernet Ports
- + 1 WPS Push Button (for Wi-Fi Protected Setup™)
- + 3-Mode Switch
  - AP 2.4GHz
  - AP 5GHz
  - Bridge
- + USB 2.0 Port

### OPERATION MODES

- + AP 2.4GHz
- + AP 5GHz
- + Bridge

### SECURITY

- + Wi-Fi Protected Access (WPA/WPA2)
- + WPS™

### LEDs

- + Power
- + AP
- + Bridge

### CERTIFICATIONS

- + FCC
- + IC
- + IPv6
- + Wi-Fi®

### TEMPERATURE

- + Operating: 30° to 104° F (0° to 40° C)

### HUMIDITY

- + Operating: 10% - 90% Non-condensing

### DIMENSIONS (L x W x H)

- + Item: 10.18" x 8.19" x 2.68"

### WARRANTY

- + 1-Year Limited<sup>6</sup>

<sup>1</sup> Maximum wireless signal rate derived from IEEE Standard 802.11 specifications. Actual data throughput will vary. Network conditions and environmental factors, including volume of network traffic, building materials and construction, and network overhead, lower actual data throughput rate. Environmental factors will adversely affect wireless signal range. Wireless range and speed rates are D-Link RELATIVE performance measurements based on the wireless range and speed rates of a standard Wireless G product from D-Link. Maximum throughput based on D-Link Wireless N devices.

<sup>2</sup> Latest software and documentation are available at <http://support.dlink.com>.

<sup>3</sup> Computer must adhere to Microsoft's recommended System Requirements.

<sup>4</sup> The software included with this product is not Mac-compatible.

<sup>5</sup> 24/7 Basic Installation Support is available only in the USA for the first 30 days from date of original purchase.

<sup>6</sup> 1-Year Limited Warranty available only in the USA and Canada.

All references to speed and range are for comparison purposes only. Product specifications, size and shape are subject to change without notice, and actual product appearance may differ from that depicted herein.

©2011 D-Link Corporation/D-Link Systems, Inc. All rights reserved. D-Link, the D-Link logo, the D-Link RoHS logo are registered trademarks of D-Link Corporation or its subsidiaries in the United States and/or other countries. Other trademarks or registered trademarks are the property of their respective owners.

## MINIMUM SYSTEM REQUIREMENTS

Computer with:

- + Windows® 7<sup>3</sup>, Windows Vista<sup>3</sup>, Windows® XP SP3<sup>3</sup>, or Mac OS® X (v10.4)<sup>4</sup>
- + Internet Explorer® v7 or Mozilla® Firefox® v3.0
- + Network Interface Card
- + CD-ROM Drive

For Internet Access:

- + Cable or DSL Modem
- + Subscription with an Internet Service Provider (ISP)
- + Router

## RECOMMENDED SYSTEM REQUIREMENTS

For Optimal Wireless Performance, use with:

- + Wireless N750 Dual Band Router (DIR-835)

## PACKAGE CONTENTS

- + Wireless N450 MediaBridge®/Access Point
- + Ethernet Cable
- + Power Adapter
- + Quick Installation Guide
- + CD-ROM<sup>5</sup> with Product Documentation

DAP-1533