

Specifications

TYPE	Type	Digital interchangeable lens system camera	
	Recording Media	SD Memory Card, SDHC Memory Card, SDXC Memory Card	
	Image Sensor Size	17.3 x 13.0 mm (in 4:3 aspect ratio)	
	Lens Mount	Micro Four Thirds mount	
IMAGE SENSOR	Type	Live MOS Sensor	
	Total Pixels	13.06 Megapixels	
	Camera Effective Pixels	12.10 Megapixels	
	Color Filter	Primary color filter	
	Dust Reduction System	Supersonic wave filter	
RECORDING SYSTEM	Recording File Format	Still Image: JPEG (DCF, Exif 2.3), RAW MPO (When attaching 3D lens in Micro Four Thirds System standard) Motion Image: AVCHD / QuickTime Motion JPEG	
	Aspect Ratio	4:3, 3:2, 16:9, 1:1	
	Image Quality	RAW, RAW+Fine, RAW+Standard, Fine, Standard, MPO+Fine, MPO+Standard (When attaching 3D lens in Micro Four Thirds System standard)	
	Color Space	sRGB, Adobe RGB	
	Still Image	14.3(1) 4,000 x 3,000 (L) / 2,816 x 2,112 (M) / 2,048 x 1,536 (S) / 1,408 x 1,020 (When attaching 3D lens in Micro Four Thirds System standard)	
		13.2(1) 4,000 x 2,672 (L) / 2,816 x 1,880 (M) / 2,048 x 1,360 (S) / 1,400 x 1,064 (When attaching 3D lens in Micro Four Thirds System standard)	
		11.6(9) 4,000 x 2,248 (L) / 2,816 x 1,584 (M) / 1,920 x 1,080 (S) / 1,400 x 904 (When attaching 3D lens in Micro Four Thirds System standard)	
		11.1(1) 2,992 x 2,992 (L) / 2,112 x 2,112 (M) / 1,504 x 1,504 (S) / 1,440 x 1,440 (When attaching 3D lens in Micro Four Thirds System standard)	
	File Size (Pixels)	Motion JPEG	14.3(1) VGA : 640 x 480, 30fps / DVGA : 320 x 240, 30fps
		Motion Image	THD1 1,280 x 720, 30fps
NTSC			[Full HD] 1,920 x 1,080, 60p (sensor output is 30p) [FSH: 17Mbps] [HD] 1,280 x 720, 60p (sensor output is 30p) [SH: 17Mbps]
AVCHD	[Full HD] 1,920 x 1,080, 50i (sensor output is 25p) [FSH: 17Mbps] [HD] 1,280 x 720, 50p (sensor output is 25p) [SH: 17Mbps]		
PAL	[Full HD] 1,920 x 1,080, 50i (sensor output is 25p) [FSH: 17Mbps] [HD] 1,280 x 720, 50p (sensor output is 25p) [SH: 17Mbps]		
Continuous Recordable Time (Motion images)	AVCHD with picture quality set to [FSH]: Approx. 130 min with H-FS014042 / Approx. 150 min with H-H014		
Actual Recordable Time (Motion images)	AVCHD with picture quality set to [FSH]: Approx. 65 min with H-FS014042 / Approx. 75 min with H-H014		
FOCUS	Type	Contrast AF system	
	Focus Mode	AFS / AFC / MF	
	AF Mode	Face detection / AF Tracking / 23-area-focusing / 1-area-focusing / Pinpoint	
	AF Detectable Range	EV 0 - 18 (ISO100 equivalent)	
	AF Assist Lamp	YES	
	AF Lock	Set the Fn button in custom menu to AF/AE lock	
	Others	Touch shutter, Quick AF, Continuous AF (during motion image recording), AF+MF, Touch MF Assist	
EXPOSURE CONTROL	Light Metering System	144-zone multi-pattern sensing system	
	Light Metering Mode	Intelligent Multiple / Center Weighted / Spot	
	Metering Range	EV 0 - 18 (F2.0 lens, ISO100 equivalent)	
	Exposure Mode	Program AE / Aperture Priority AE / Shutter Priority AE / Manual	
ISO Sensitivity (Standard Output Sensitivity)	Auto / Intelligent ISO / 140 / 200 / 400 / 800 / 1600 / 3200 / 6400		
Exposure Compensation	1/3 EV Step ±3 EV		
AE Lock	Set the Fn button in custom menu to AF/AE lock		
AE Bracket	3, 5 frames, in 1/3 or 2/3 EV Step, ±4/3 EV		
WHITE BALANCE	White Balance	Auto / Daylight / Cloudy / Shade / Incandescent / Flash / White Set 1, 2 / Color temperature setting / Portrait / Beauty Skin / Sports / Flower / Collection / Baby / Pet / Delicous Control	
	White Balance Adjustment	Blue/amber bias, Magenta/green bias	
	Color Temperature Setting	2,500K - 10,000K in 100K	
White Balance Bracket	3 exposures in blue/amber axis or in magenta/green axis		
SHUTTER	Type	Focal-plane shutter	
	Shutter Speed	Still Images: 1/4,000 - 60 Motion Image: 1/16,000 - 1/20 (NTSC), 1/16,000 - 1/25 (PAL)	
Self Timer	10 sec, 3 images / 2 sec / 10 sec		
SCENE MODE	Still Image SCN Mode	Portrait / Soft Skin / Scenery / Architecture / Sports / Peripheral Defocus / Flower / Food / Objects / Night Portrait / Night Scenery / Illuminations / Baby 1, 2 / Pet / Party / Sunset	
	Video SCN Mode	Portrait / Soft Skin / Scenery / Architecture / Sports / Flower / Food / Objects / Low-light / Party / Sunset (Activated by selecting Still Image SCN mode then pressing Video Button. Still Image SCN modes without corresponding Video SCN mode is recorded in mode suitable for the recording situation.)	
CREATIVE CONTROL	Creative Control	(Still Image & Motion Image) Expressive / Retro / High Key / Sepia / High Dynamic / Miniature	
	Burst Speed	H: 3.8 frames/sec, M: 2.8 frames/sec (with Live View), L: 2 frames/sec (with Live View)	
BURST SHOOTING	Number of Recordable Images	7 images (when there are RAW files with the particular speed) Unlimited consecutive shooting (when there are no RAW files) (depending on memory card size, battery power, picture size, and compression)	
	Type	TTL Built-in-Flash, GN5.3 equivalent (ISO160) ml, Built-in Pop-up	
BUILT-IN-FLASH	Flash Mode	Auto, Auto / Red-eye Reduction, Forced On, Forced On / Red-eye Reduction, Slow Sync, Slow Sync / Red-eye Reduction, Forced Off	
	Synchronization Speed	Less than 1/160 second	
	Flash Synchronization	1st Curtain Sync	
LCD MONITOR	Type	TFT LCD with Touch panel	
	Monitor Size	3.0 inch / 3.2 Aspect / Wide-viewing angle	
	Pixels	460,000 dots	
	Field of View	Approx. 100%	
Monitor Adjustment	Brightness (7 levels), Contrast and Saturation (7 levels), Red tint (7 levels), Blue tint (7 levels)		
Digital Zoom	2x, 4x		
LIVE VIEW	Extra Tele Conversion	Still image: Max. 2x (Not effective with L size recording. Magnification ratio depends on the recording pixels and aspect ratio.) Motion image: 3.1x (SH in AVCHD and HD in Motion JPEG), 4.2x (VGA/QVGA in Motion JPEG)	
	Other Functions	Guide Lines (3 patterns) Real-time Histogram	
PLAYBACK	Playback Mode	Normal playback, 30-thumbnail display, 12-thumbnail display, Calendar display, Zoomed playback (Max. 16x), Slideshow (duration & effect is selectable), Playback Mode (Normal / Framerate / AVCHD / Motion JPEG / 3D Play / Category / Favorite), Title Edit, Text Stamp, Video Divide, Resize, Cropping, Aspect Conversion, Rotate, Rotate Display, Favorite, Print Set, Protect, Face Recognition Edit	
	Image Protection / Erase	Single / Multi, Single in Burst Group / Multi in Burst Group, Cancel	
PRINT	Erase	Single / Multi / All / Except Favorite	
	Direct print	PictBridge compatible (Print size, Layout, and Date setting are selectable)	
	USB	USB 2.0 High Speed	
	HDMI	mini-HDMI TypeC Video: Auto / 1080 / 720p / 480p (576p in PAL system) Audio: Linear PCM	
INTERFACE	Audio Video Output	Monaural Type, NTSC / PAL, NTSC only for North America *Check the website of the Panasonic sales company in your country or region for details on the products that are available in your market.	
	Microphone	Monaural, Wind-cut, Off / Low / Standard / High Microphone level adjustable: Lv1 / Lv2 / Lv3 / Lv4	
	Speaker	Monaural	
	OSD Language	English, German, French, Italian, Spanish, Polish, Czech, Hungarian, Russian, Chinese (Traditional), Chinese (Simplified), Dutch, Thai, Korean, Turkish, Portuguese, Arabic, Persian, Japanese, Swedish, Danish, Finnish, Greek, Vietnamese *Check the website of the Panasonic sales company in your country or region for details on the OSD languages on the products that are available in your market.	
POWER	Battery	Li-ion Battery Pack (7.2V, 940mAh) (Included) Battery Charger	
	Battery Life (CIPA Standard)*	Approx. 320 images with H-FS014042 Approx. 340 images with H-H014	

DIMENSIONS / WEIGHT	Dimensions (W x H x D)	107.7 x 67.1 x 32.5 mm / 4.24 x 2.64 x 1.28 inch (excluding protrusions)
	Weight	Approx. 264 g / 9.31 oz (SD card, Battery, Body) Approx. 222 g / 7.83 oz (Body only) Approx. 319 g / 11.25 oz (SD card, Battery, H-H014 lens included) Approx. 429 g / 15.13 oz (SD card, Battery, H-FS014042 lens included)
OPERATING ENVIRONMENT	Operating Temperature	0°C to 40°C (32°F to 104°F)
	Operating Humidity	10%RH to 80%RH
STANDARD ACCESSORIES	Software	PHOTOuSTUDIO 6.2 HD Edition, SILKPIX® Developer Studio 3.1 SE, Super LiveScope (trial version), USB Driver
	Standard Accessories	Battery Charger, Body Cap (DMC-GF3K and DMC-GF3 only), AV Cable, USB Connection Cable, Shoulder Strap, Stylus Pen, CD-ROM *Body cap not included for the DMC-GF3C kit and the DMC-GF3W kit **Lens rear cap of H-H014 lens not included for the DMC-GF3C kit and the DMC-GF3W kit

\* Shooting conditions: 23°C with 50%RH humidity; LCD on; Using a Panasonic SD Memory Card (2GB); Using the supplied battery; Using the supplied lens; Starting recording 30 seconds after the camera is turned on (When the optical image stabilizer is set to [Normal]); Recording once every 30 seconds with full flash every second recording; Turning the camera off every 10 recordings; The number of recordable images decreases in Auto Power LCD mode or Power LCD mode.  
\* CIPA is an abbreviation of "Camera & Imaging Products Association."

LUMIX G 14 mm / F2.5 ASPH.

LENS	Lens Construction	6 elements in 5 groups (3 Aspherical lenses)
	Mount	Micro Four Thirds mount
	Optical Image Stabilizer	—
	Focal Length	1 = 14 mm (35 mm camera equivalent 28 mm)
	Aperture Type	7 diaphragm blades / Circular aperture diaphragm
	Aperture	F2.5
	Minimum Aperture	F22
	Closest Focusing Distance	0.18 m / 0.59 feet
	Maximum Magnification	Approx. 0.1x / 0.2x (35 mm camera equivalent)
	Diagonal Angle of View	75°
	Filter Size	ø 46 mm / 1.81 inch
	Max. Diameter	ø 55.5 mm / 2.19 inch
Overall Length	Approx. 20.5 mm / 0.81 inch (from the tip of the lens to the base side of the lens mount)	
Weight	Approx. 55 g / 1.94 oz	
Standard Accessories	Lens cap, Lens rear cap, Lens storage bag	

LUMIX G VARIO 14-42 mm / F3.5-5.6 ASPH. / MEGA O.I.S.

LENS	Lens Construction	12 elements in 9 groups (1 Aspherical lens)
	Mount	Micro Four Thirds mount
	Optical Image Stabilizer	YES
	Focal Length	1 = 14 mm to 42 mm (35 mm camera equivalent 28 mm to 84 mm)
	Aperture Type	7 diaphragm blades / Circular aperture diaphragm
	Aperture Range	F3.5 (Wide) - F5.6 (Tele)
	Minimum Aperture	F22
	Closest Focusing Distance	0.3 m / 1 feet
	Maximum Magnification	Approx. 0.16x / 0.32x (35 mm camera equivalent)
	Diagonal Angle of View	75° (W) - 29° (T)
	Filter Size	ø 52 mm / 2.05 inch
	Max. Diameter	ø 60.6 mm / 2.39 inch
Overall Length	Approx. 63.6 mm / 2.50 inch (from the tip of the lens to the base side of the lens mount)	
Weight	Approx. 165 g / 5.82 oz	
Standard Accessories	Lens cap, Lens hood, Lens rear cap, Lens storage bag	

DMC-GF3 Battery Life When Recording HD Motion Pictures (Approx.)

Continuous Recording Time	LUMIX G VARIO 14-42 mm / F3.5-5.6 ASPH. / MEGA O.I.S.	LUMIX G 14 mm / F2.5 ASPH.
	AVCHD (FSH): 2 h 10 min	AVCHD (FSH): 2 h 30 min
	Actual Recording Time	AVCHD (FSH): 1 h 5 min

• These are standard times taken at a temperature of 23°C (73.4°F) and a humidity of 50%RH. • The time available for recording varies depending on the environment, the interval between recordings, and the manner of use. • Actual recordable time is the time available for recording when repeating actions such as switching the power supply [ON/OFF], starting/stopping recording, zoom operation, etc. • The length of recording time depends on the capacity of the SD/SDHC/SDXC Memory Card. (Up to the equivalent of 2 GB per motion picture recording.) • Videos can be recorded continuously for up to 29 min 59 sec in European PAL areas. • The length of recording time depends on the capacity of the SD/SDHC/SDXC Memory Card. • Use a card with SD Speed Class\* with "Class 4" or higher when recording videos in AVCHD. Also, use a card with SD Speed Class with "Class 6" or higher when recording videos in Motion JPEG. • SD Speed Class is the speed standard regarding continuous writing.

**Partial restrictions on using Panasonic digital video cameras to play AVCHD motion images recorded with the DMC-GF3.**  
 • AVCHD motion images recorded with the image quality set to SH mode (1280 x 720) cannot be played on AVCHD-compatible digital video cameras. • AVCHD motion images recorded with AVCHD-compatible digital video cameras cannot be played on the DMC-GF3.  
 • More detailed information is available on our support site: <http://panasonic.jp/support/global/cs/dsc>

**About the performance of Face Recognition function**  
 Recognition performance varies greatly depending on shooting conditions, i.e., according to factors such as angles, facial expression and lighting, so operation under all conditions cannot be guaranteed. Because the camera searches for faces that are similar to registered faces, there are cases where the faces are not correctly recognized when the registered image and the shooting image varies much. When facial characteristics are similar, particularly between parents and their children or brothers and sisters, the camera may not distinguish the faces.

• AVCHD motion images recorded onto an SD Memory Card or a DVD disc cannot be played from a device that does not support the AVCHD standard. • AVCHD and AVCHD Logos are trademarks of Panasonic Corporation and Sony Corporation. AVCHD is a highdefinition (HD) digital video recording / playback format jointly established by Panasonic Corporation and Sony Corporation. For more details, please refer to the "AVCHD Information Website". <http://www.avchd-info.org/> • The release date may differ depending on the country. Check the website of the Panasonic sales company in your country or region for details on the optional accessories that are available in your market. • Batteries made by other companies which have been certified by Panasonic may be used with these units, but we offer no guarantees as to the quality, performance or safety of such batteries. • Exercise care when purchasing batteries. Many fake or imitation batteries have been found among those sold at unusually low prices and those which customers cannot check for themselves before purchasing. • Please confirm the latest information about batteries on the following website: <http://panasonic.co.jp/pavc/global/cs/info/battery.html> (English) • When a lens that does not support the contrast AF function is mounted, operation will automatically switch to manual focus. Confirm the operation information of compatible lenses at Customer support <http://panasonic.jp/support/global/cs/dsc> (English). • The SDXC/SDHC Memory Card can be used only if their logos are indicated on the equipment or in the operation manual. It cannot be used with equipment that supports only the SD Memory Card. • Dolby and the double-D symbol are trademarks of Dolby Laboratories. • HDMI, the HDMI logo and High-Definition Multimedia Interface are trademarks or registered trademarks of HDMI Licensing LLC. • Microsoft® and Windows® are either registered trademarks or trademarks of Microsoft Corporation in the United States and/or other countries. • Apple® and Mac OS® are either registered trademarks or trademarks of Apple Inc. in the United States and/or other countries. • QuickTime and the QuickTime logo are trademarks or registered trademarks of Apple Inc., used under license therefrom. • Four Thirds™ and Micro Four Thirds™, and Four Thirds and Micro Four Thirds Logo marks are trademarks or registered trademarks of Olympus Imaging Corporation, in Japan, the United States, the European Union and other countries. • Other names of systems and products mentioned in this brochure are generally the registered trademarks or trademarks of the manufacturers who developed the system or product concerned. • Some accessories are not available in some countries. • Weight and dimensions shown are approximate. • Design, functions, and specifications are subject to change without notice. • Overall length of lens is from the tip of the lens to the base side of the lens mount. • Some functions may not work when lenses other than the included lens are used. Please refer to Panasonic's website, etc., for the latest information. • Availability of colors and OSD languages may vary depending on the sales area. • Some sample images are simulated. • The use of recorded or printed materials that are protected by copyright for any purpose other than personal enjoyment is prohibited, as it would infringe upon the rights of the copyright holder.

Panasonic  
ideas for life

New-Generation System Cameras

LUMIX G™  
MICRO SYSTEM

For Those Who Understand the Difference



New-Generation System Cameras

LUMIX G™  
MICRO SYSTEM

<http://panasonic.net/lumix>

Official Worldwide  
Olympic Partner



LUMIX GF3

Capture Every Beautiful Moment with  
the World's **Smallest** and  
**Lightest Body**\*



The 12.1-megapixel Live MOS sensor reproduces high quality images.



The 3.0-inch touch-screen and the control dial allow easy, intuitive control.



The built-in flash lets you capture people at nighttime or indoors.

The world's smallest and lightest\* DMC-GF3 is reduced approx. 16.7% in size and approx. 16.2% in weight compared with the DMC-GF2. And the newly designed body profile incorporates an ergonomic grip, which offers comfortable hold, despite its ultra compact size.

# LUMIX GF3





LUMIX G VARIO 14-42 mm / F3.5-5.6 ASPH. / MEGA O.I.S., 1/400 sec, F11, ISO160



LUMIX G 14 mm / F2.5 ASPH., 1/30 sec, F4.0, ISO160



LUMIX G VARIO 14-42 mm / F3.5-5.6 ASPH. / MEGA O.I.S., 1/125 sec, F4.4, ISO160



LUMIX G 14 mm / F2.5 ASPH., 1/250 sec, F8.0, ISO160



LUMIX G VARIO 14-42 mm / F3.5-5.6 ASPH. / MEGA O.I.S., 1/800 sec, F6.3, ISO160



LUMIX G VARIO 14-42 mm / F3.5-5.6 ASPH. / MEGA O.I.S., 1/40 sec, F5.0, ISO160

# Experience the Outstanding Image Quality of a System Camera



## The World's Fastest Level of Light Speed AF\*



The DMC-GF3 boasts the Light Speed AF of approx. 0.1 second\*\* to capture spur-of-the-moment opportunities in sharp focus.

\* The time for focusing on the subject is measured with the LUMIX G VARIO HD 14-140mm / F4.0-5.8 ASPH. / MEGA O.I.S. (H-VS014140), the LUMIX G 14mm / F2.5 ASPH. (H-H014), and the LUMIX G VARIO 14-42mm / F3.5-5.6 ASPH. / MEGA O.I.S. (H-FS014042) to move the lens position to "2m" from "infinity" position. The zoom position is in wide range. Panasonic measurement method.

\*\* Approx. 0.1 sec with the LUMIX G VARIO HD 14-140mm / F4.0-5.8 ASPH. / MEGA O.I.S. (H-VS014140), approx. 0.18 sec with the LUMIX G 14mm / F2.5 ASPH. (H-H014) and the LUMIX G VARIO 14-42mm / F3.5-5.6 ASPH. / MEGA O.I.S. (H-FS014042).

• To get the best AF performance with the DMC-GF3 and the LUMIX G VARIO HD 14-140mm / F4.0-5.8 ASPH. / MEGA O.I.S. (H-VS014140), the firmware of the LUMIX G VARIO HD 14-140mm / F4.0-5.8 ASPH. / MEGA O.I.S. (H-VS014140) must be updated to ver. 1.3 or later.

Conventional AF System



Light Speed AF



## Full HD Video Recording in AVCHD Format



The DMC-GF3 can record 1,920 x 1,080 videos in AVCHD format featuring almost



twice the recording time in HD quality than Motion JPEG.

• AVCHD and the AVCHD logos are trademarks of Panasonic Corporation and Sony Corporation.

## Easy Video Recording with Full-time Auto Focus

Video recording is more flexible with the DMC-GF3. Touch the screen, and the camera locks on and automatically "tracks" the subject as it moves, keeping on adjusting the focus settings for best results.

## Dolby® Digital Creator High Quality Sound



The microphone on the upper body records dynamic, true-to-life audio that brings out the power of your HD videos.

• Dolby and the double-D symbol are trademarks of Dolby Laboratories.

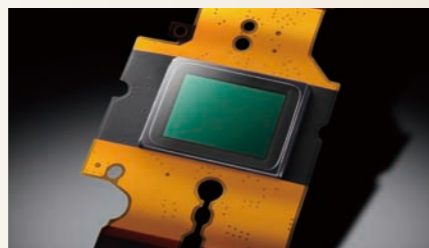
### LUMIX G Image Quality — Basic Principles

LUMIX G gives you superb image quality with true-to-life details.



## High Image Quality with 12.1-megapixel Live MOS Sensor

The DMC-GF3's Live MOS sensor is advantageous for photo and video recording with its high S/N (Signal-to-Noise), which results in high quality images.



## High Speed, Energy-Saving Venus Engine

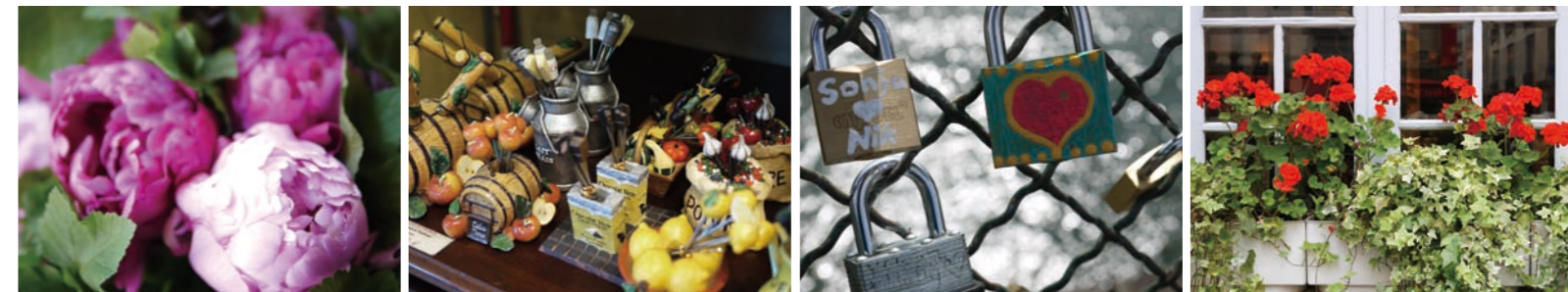


The Venus Engine achieves both advanced signal processing and much less power consumption.

The new advanced noise reduction system realized S/N improvement by approx. 3dB at ISO3200 / ISO6400 setting respectively and improved the color reproduction in high sensitivity recording. The result is a picture with stunning clarity even in low-lit situations.



# Aim, Shoot, and View with Everything Right at Your Fingertips



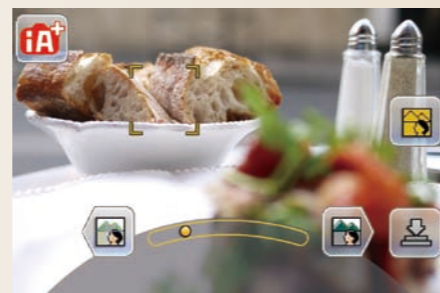
## Smart, Easy Touch-screen Control

The 3.0-inch touch-screen elevates operability more accurately and easily. It includes touch shutter, touch AF, touch playback and more.



## Make Your Photos More Creative with Touch Defocus

In the iA Plus Mode and the Creative Control Mode, the range of defocus can be adjusted by just moving the slider with your finger. This makes it easy to achieve soft focus.



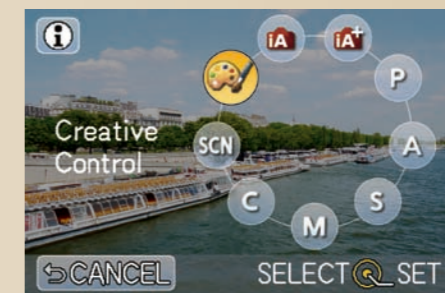
## The New Control Dial Enables Smooth Operation

The new control dial gives you smooth, free control. Just turn it and choose or adjust the settings you want. It makes complicated settings fun and easy.



## The Newly Designed GUI for More Intuitive Operation

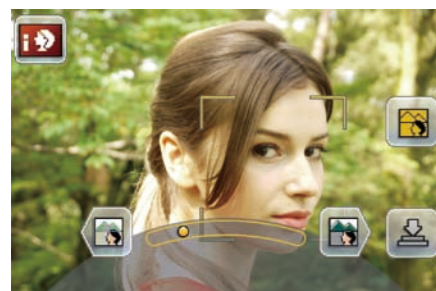
The sophisticatedly designed GUI and easy-to-understand icons allow easy shooting. Simply touch the icons to shoot the way you want.



# Make Your Photos More Creative in Your Own Way

## iA Plus Mode with Easy Manual Adjustment

**iA+** The iA (Intelligent Auto) Plus will satisfy experienced photographers, yet is easy enough for beginners to use comfortably in both photo and video recording. Defocusing area, exposure compensation and white balance can be adjusted for scenes where a slight manual adjustment may bring better results by just moving the slider with your finger.



<p><b>Defocus</b> The range of defocus can be adjusted to match your needs.</p>	
<p><b>Brightness (Exposure Compensation)</b> You can adjust the exposure compensation accurately and easily.</p>	
<p><b>Color (White Balance Adjustment)</b> You can adjust the white balance from warm red to cool blue.</p>	



Taken with Miniature Effect.

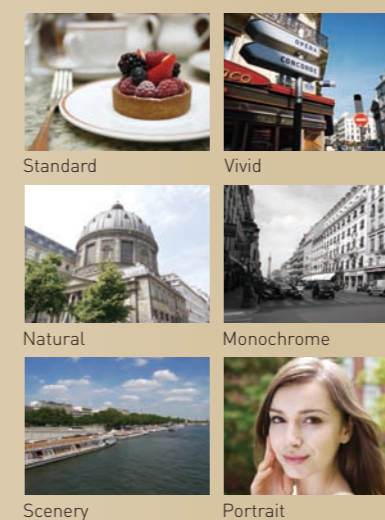
## Find a Unique Image with Creative Control

The new Creative Control Mode is a special option that gives free reign to your creativity. It offers a total of 6 effects – newly added Miniature Effect, Expressive, Retro, High Key, Sepia, and High Dynamic. This mode lets you enjoy making both photos and videos even more impressive.



## Make Your Own Way of Shooting with Photo Style

You can manually choose from 6 color types – Standard, Vivid, Natural, Monochrome, Scenery and Portrait – to get even more detailed image settings, or to match the shooting situation. The contrast, sharpness, saturation or noise reduction for each mode parameter can also be customized in five steps just with a few touches.



# Stunningly Slim, Compact Design Even Fits in a Pocket

Even though the DMC-GF3 pursued the ultimate compactness, Panasonic did not compromise in the equipment of the camera such as the built-in flash. Tiny, stylish round-form design adopting aluminum dispels an impression for conventional big, heavy and colorless DSLRs. It is stunningly compact yet comfortable to hold with the new ergonomically studied grip. With the durable metal mount surrounded by a silver-colored ring, the DMC-GF3 boasts sleekly refined profile with a variety of stylish colors - black, red, pink, brown and white\*.



# Expand Your Creativity with Interchangeable Lenses



The compact, lightweight LUMIX G lenses and LEICA DG lenses support the contrast AF system of LUMIX G Micro System cameras, and feature many of Panasonic's advanced technologies. All of these high-performance lenses comply with the

Micro Four Thirds System, an interchangeable lens camera system that was designed and developed to optimize the characteristics of digital technology. It carefully preserves the image quality of the 4/3-type image sensor while maintaining a thin, compact profile.

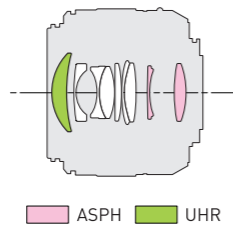
## LEICA DG SUMMILUX 25mm / F1.4 ASPH. (H-X025)

50mm [35mm camera equiv.]

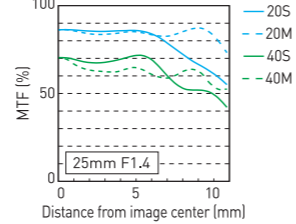


Lens Construction	9 elements in 7 groups (1 UHR (Ultra High Refractive Index) lens, 2 Aspherical lenses)
Nano Surface Coating	Yes
Mount	Micro Four Thirds mount
Optical Image Stabilizer	-
Focal Length	f = 25 mm (35 mm camera equivalent 50 mm)
Aperture Type	7 diaphragm blades / Circular aperture diaphragm
Aperture	F1.4
Minimum Aperture	F16
Closest Focusing Distance	0.3 m / 0.98 feet
Maximum Magnification	Approx. 0.11x / 0.22x (35 mm camera equivalent)
Diagonal Angle of View	47°
Filter Size	ø 46 mm / 1.81 inch
Max. Diameter	Approx. ø 63 mm / 2.48 inch
Overall Length	Approx. 54.5 mm / 2.14 inch (from the tip of the lens to the base side of the lens mount)
Weight	Approx. 200 g / 7.05 oz
Standard Accessories	Lens cap, Lens rear cap, Lens storage bag

### Construction



### MTF Chart



\* For the lenses distortion compensation available, the horizontal axis of MTF is the distance from the center, which is compensated accordingly.

The new LEICA DG lens features the Nano Surface Coating, which minimizes ghosting and flare, and an Ultra High Refractive (UHR) index lens, which makes it thin and light without compromising its image quality. Moreover, its F1.4 brightness allows a beautiful soft focus for photos and videos to be even more impressive.



### Wide Zoom Lens

LUMIX G VARIO 7-14mm / F4.0 ASPH. (H-F007014) 14-28mm (35mm camera equiv.)



### Standard Zoom Lenses

LUMIX G VARIO 14-42mm / F3.5-5.6 ASPH. / MEGA O.I.S. (H-FS014042) 28-84mm (35mm camera equiv.)



LUMIX G VARIO 14-45mm / F3.5-5.6 ASPH. / MEGA O.I.S. (H-FS014045) 28-90mm (35mm camera equiv.)



LUMIX G VARIO HD 14-140mm / F4.0-5.8 ASPH. / MEGA O.I.S. (H-VS014140) 28-280mm (35mm camera equiv.)



### Telephoto Zoom Lenses

LUMIX G VARIO 45-200mm / F4.0-5.6 / MEGA O.I.S. (H-FS045200) 90-400mm (35mm camera equiv.)



LUMIX G VARIO 100-300mm / F4.0-5.6 / MEGA O.I.S. (H-FS100300) 200-600mm (35mm camera equiv.)



### Single Focal Length Lenses

LUMIX G FISHEYE 8mm / F3.5 (H-F008) 16mm (35mm camera equiv.)



LUMIX G 14mm / F2.5 ASPH. (H-H014) 28mm (35mm camera equiv.)



LUMIX G 20mm / F1.7 ASPH. (H-H020) 40mm (35mm camera equiv.)



### Macro Lens

LEICA DG MACRO-ELMARIT 45mm / F2.8 ASPH. / MEGA O.I.S. (H-ES045) 90mm (35mm camera equiv.)



### 3D Lens

LUMIX G 12.5mm / F12 (H-FT012) 68mm\* (35mm camera equiv.) 40mm (35mm camera equiv.) \*When setting the aspect ratio at 16:9 with the DMC-GF3.



• Four Thirds™ and Micro Four Thirds™, and Four Thirds and Micro Four Thirds Logo marks are trademarks or registered trademarks of Olympus Imaging Corporation, in Japan, the United States, the European Union and other countries. • LEICA is a registered trademark of Leica Microsystems IR GmbH. The LEICA DG lenses are manufactured using measurement instruments and quality assurance systems that have been certified by Leica Camera AG based on the company's quality standards.

## A Breakthrough in Size and Weight: Mirrorless Structure



The LUMIX G Micro System's mirrorless structure achieves an extremely compact size and lightweight, cutting the flange focal distance almost in half and reducing the body mount radius by 6 mm. You get breathtaking pictures with superior mobility, thanks to an image sensor that's identical in size to larger Four Thirds System standard cameras.



## Optional Accessories

### Filter / Protector

**PL Filter**  
DMW-LPL46  
DMW-LPL52  
DMW-LPL62  
DMW-LPL67

**ND Filter**  
DMW-LND46  
DMW-LND52  
DMW-LND62

### MC Protector

DMW-LMC46 DMW-LMCH62  
DMW-LMC52 DMW-LMCH67

### Zoom Lever

DMW-ZL1



### Mount Adaptor

DMW-MA1 for the Four Thirds System  
DMW-MA2M for M mount lens of Leica Camera AG  
DMW-MA3R for R mount lens of Leica Camera AG

### Battery Pack

DMW-BLE9 **NEW**



### HDMI mini Cable

RP-CDHM15 (1.5m)  
RP-CDHM30 (3.0m)



### Soft Case

DMW-CG3-K



### Bag

DMW-BAG1



### Shoulder Strap (Woven)

DMW-SSTG7-K **NEW**  
DMW-SSTG7-W (White)  
DMW-SSTG7-R (Red)  
DMW-SSTG7-T (Brown)



### Shoulder Strap (Leather)

DMW-SSTG7-K (Black) **NEW**  
DMW-SSTG7-W (White)  
DMW-SSTG7-R (Red)  
DMW-SSTG7-T (Brown)



### Hand Strap

DMW-HSTG1-K (Black) **NEW**  
DMW-HSTG1-W (White)  
DMW-HSTG1-R (Red)  
DMW-HSTG1-T (Brown)



### Leather Bag

DMW-BAG1



### Tripod Adaptor

DMW-TA1



### SD / SDHC / SDXC Memory Card

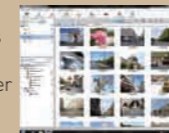
64 GB: RP-SDW64G 32 GB: RP-SDV32G  
48 GB: RP-SDW48G 16 GB: RP-SDW16G  
\* 1 GB = 1 billion bytes. Usable capacity will be less.



## Included Software Makes Your Photos More Expressive

### PHOTOfunSTUDIO 6.2 HD Edition

This software makes it possible to sort and organize photos and videos not only of those newly taken but also of those stored in your computer with quick start-up and fast read-in of images. You can upload photos to Facebook and videos to YouTube™ via this software, too.



- Facebook and the Facebook logo are registered trademarks or trademarks of Facebook, Inc.
- YouTube is a trademark of Google Inc.

### SILKYPIX® Developer Studio 3.1 SE

The DMC-GF3 records original image data in RAW file format. A number of highly advanced functions can be applied to these RAW images by using this software with its unique combination of high resolution and extraordinary color separation performance.



### Super LoLoScope (Trial Version)

You can easily edit, convert and manage videos that you took in AVCHD format. This helps to create the kind of videos you want and greatly adds to the fun after shooting.