

Power to Generation M

A new breed of camera for a
new breed of photographer

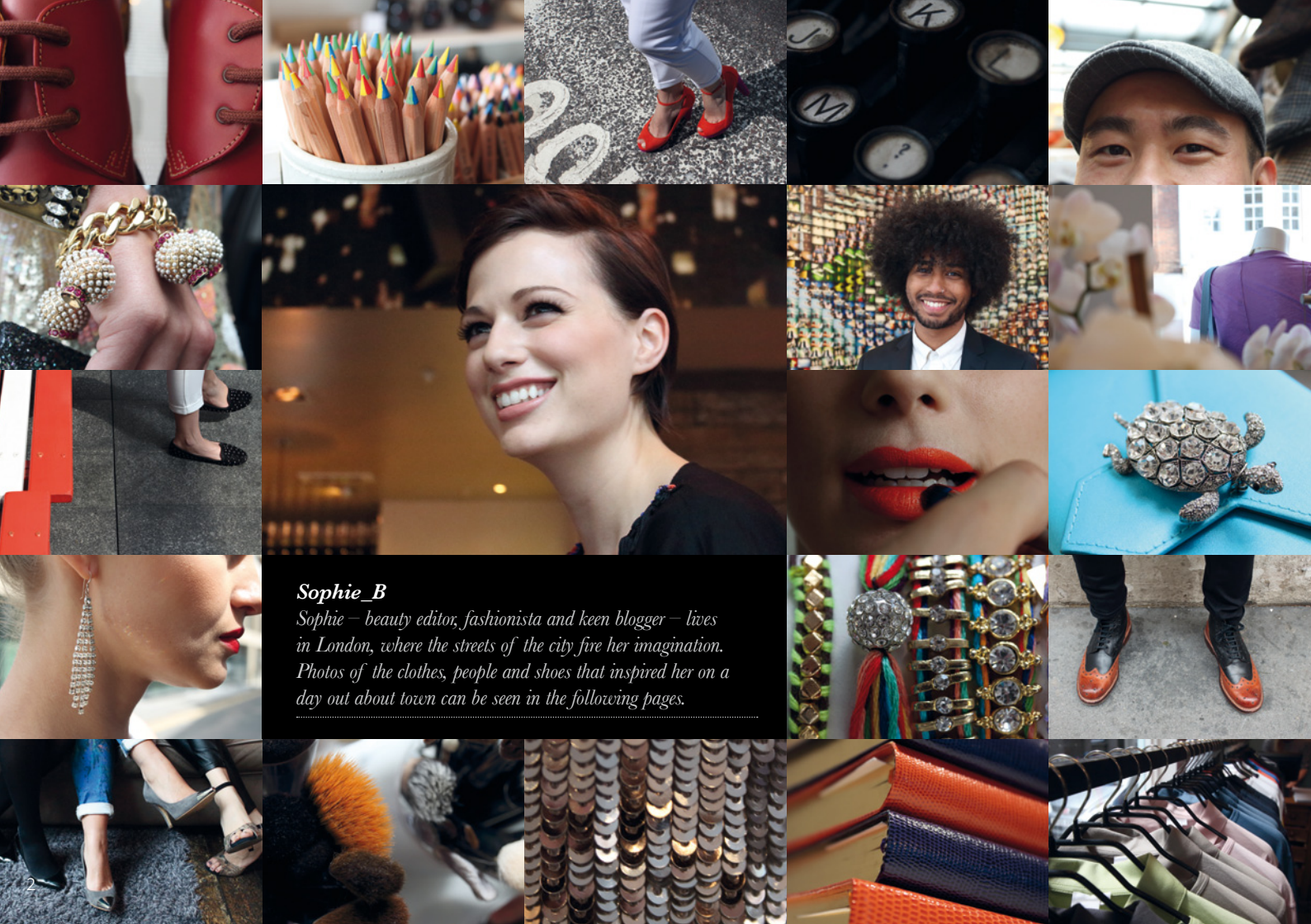


EOS M

you can



Canon



Sophie_B

Sophie – beauty editor, fashionista and keen blogger – lives in London, where the streets of the city fire her imagination. Photos of the clothes, people and shoes that inspired her on a day out about toren can be seen in the following pages.

6 œufs
6 oignons
1 bouquet de
coriandre
12,5 cl d'huile



Tristan_C
Tristan lives in Paris and is a keen food blogger. He loves sourcing the rarest and best ingredients, experimenting with new recipes in his kitchen and eating out at Parisian restaurants. See his images in this brochure and follow his day at canon-europe.com/eos_m





Sophie_B

★★★★☆ (231 comments)



Power to Generation M

Introducing
the small and
simple EOS M.

A camera that's small enough to take with you wherever you go – with the quality of a digital SLR to deliver stunning results.

A camera that's simplicity itself to use – and allows you to fully express who you are in beautiful photos and memorable movies.

A camera that inspires your imagination and captures exceptional images of everyday life.





The EOS that's always with you

An unrivalled combination of small size and powerful performance, the EOS M lets you capture beautiful images - wherever you go.

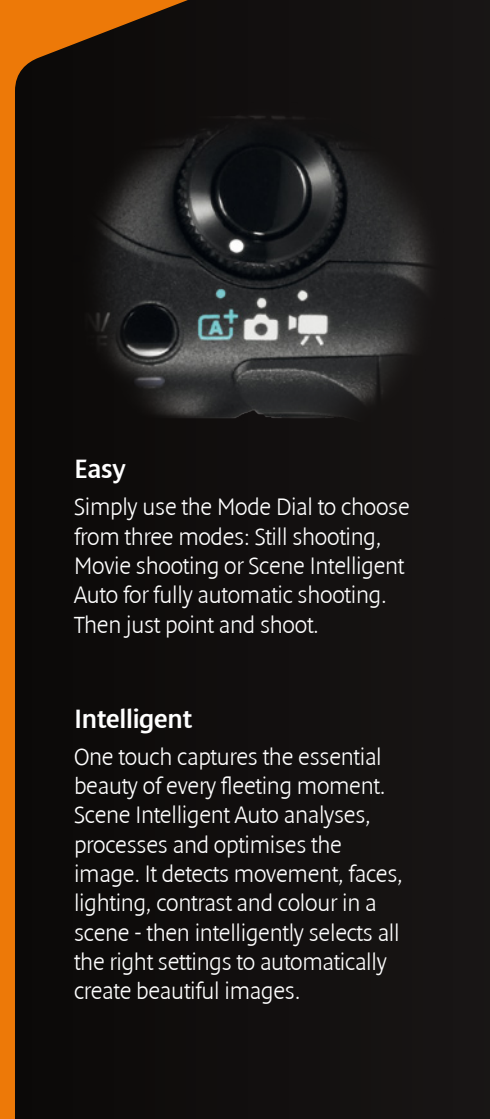
With a compact, lightweight and stylish body that's a pleasure to carry, it puts the image quality of a Canon EOS, complete with interchangeable lenses, right by your side.

It's the perfect companion to capture all the fleeting, everyday moments that make up the most of who you really are - in stunning photographs and superb Full-HD videos.



The quality of a
digital SLR in a
compact body





Easy

Simply use the Mode Dial to choose from three modes: Still shooting, Movie shooting or Scene Intelligent Auto for fully automatic shooting. Then just point and shoot.

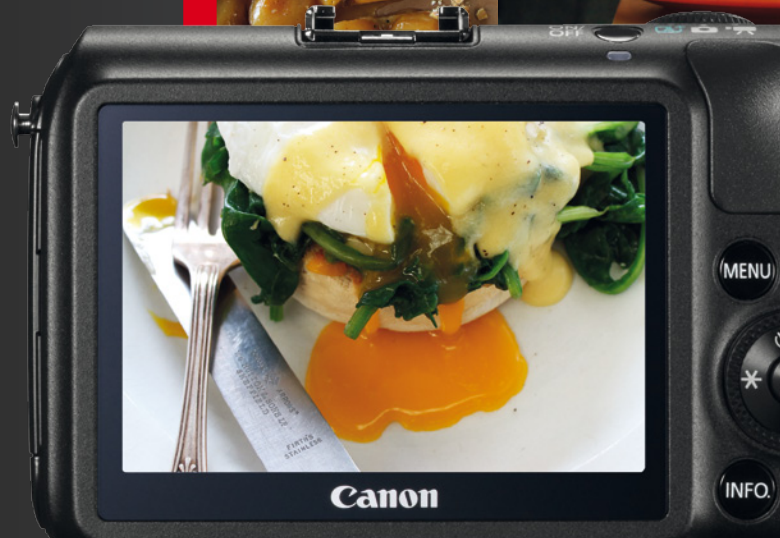
Intelligent

One touch captures the essential beauty of every fleeting moment. Scene Intelligent Auto analyses, processes and optimises the image. It detects movement, faces, lighting, contrast and colour in a scene - then intelligently selects all the right settings to automatically create beautiful images.



Simply beautiful images

Simple by design. Easy, intelligent, effortless, tactile. Trust the EOS M to capture the essence of your everyday life - exactly as you see it. Catch every glorious aspect of life with just a touch of a button.





Intuitive

See the image, touch the screen, capture the moment. The EOS M is sensitive to your every touch and intuitive to your needs. Review and zoom in on images. Select shooting modes. Take as much or as little control as you want.

Sophie_B

★★★★☆ (121 comments)





Educational

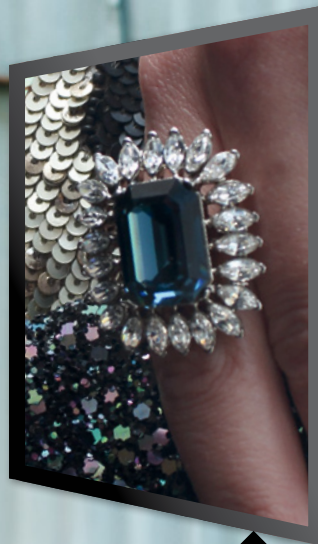
Learn about your camera as you go. Feature Guide is easy to use and clearly explains key features - so you can quickly discover all the EOS M has to offer.





Unsurpassed quality

Rich, sharp and beautiful images with stunning detail. Impeccable performance even in low light. The EOS M delivers results that transform the everyday into the exceptional.



Capture every detail

Results are superb – edgy, sharp, detailed. Print them poster sized or crop with no loss of quality. All thanks to an 18.0 Megapixel large APS-C size CMOS sensor.

Sophie_B

★★★★★ (312 comments)





EOS M

Superb image quality



Up to 4.3fps
continuous shooting

Always capture the moment

Life is fleeting - so the EOS M shoots fast and in focus. Whether you're shooting fast paced sports action, wildlife in motion or a pair of killer heels hurrying across the street, a precise autofocus system and continuous shooting mode ensure your images are beautifully sharp and clear.

Keep shooting as light level falls

Capture the real atmosphere of a scene. Day or night your images will be just as you remember them. The large sensor lets you shoot at up to ISO 12,800 (extendable to-H: 25,600) so you won't always need to use a flash, even in very low light. For when it's really dark Handheld Night Scene mode helps achieve stunning low light results without using a tripod.




Understanding ISO

A high ISO means the camera is more sensitive to light and allows you to shoot at a higher shutter speed. This reduces the possibility of camera shake or subject movement and results in sharp blur free images – even handheld in low light.





A woman with blonde hair in a braid, wearing dark sunglasses and a bright pink sleeveless top, is shown in profile looking towards the left. The background is dark and out of focus. At the bottom of the image, there are large, light-colored, stylized letters that appear to be 'MOC 21'.

Express yourself in stunning photos

Life as art. Expressed by the EOS M in stunningly beautiful images that reflect your true nature. Wherever you go, whatever you do – there it is. Everyday beauty. A fusion of street colours. The detail on a beautiful dress. City lights reflecting over wet pavements. Your life in sharp relief, against a smooth out-of-focus backdrop.



Creative Filters

Playtime. Explore your creativity. Filter your imagination. Add drama and impact to your images. On screen previews make sure you achieve the look you want. Miniaturise, take a fish eye view, soften focus. Seven filter effects – a world of possibilities.



Toy camera effect



Soft focus effect

Multi-aspect shooting



3:2



4:3



16:9



1:1



Minature effect



Fish-eye effect



Grainy B/W effect



Water painting effect



Art bold effect



Video Snapshot

Playtime in motion. Video Snapshot makes it simple to enhance your movie footage. Shoot a series of short 2, 4 or 8 second video clips. Easily edit them together in one slideshow. Play them in a single movie file you'll be proud to share.



Video snapshot album

Express yourself in vibrant videos

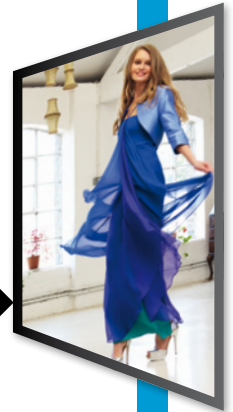


Your life as a movie. Creativity in motion with superb Full-HD (1080p) movies. Simple, exciting, fun. In automatic movie mode it's easy - all you have to do is follow the action.

Record stereo sound. Fine-tune with on-screen editing. Record, replay, remember.

Sophie_B

★★★★☆ (178 comments)





EOS M

Mount Adapter
EF-EOS M

EF-S 60mm f/2.8
Macro USM



Speedlite 90EX



EF-M 18-55mm f/3.5-5.6 IS STM



EF-M 22mm f/2 STM

EF-M lenses

Two EOS M dedicated lenses - a standard 18-55mm zoom lens for everyday shooting with a useful wide-angle to short telephoto range and a 22mm pancake lens for stunning landscapes and discreet reportage.

EOS System - a world of creative opportunities

Inspire your imagination with EOS system - successful, renowned and reliable for 25 years. Choose from a huge range of interchangeable lenses and flash accessories. View and fine-tune your images with tried and trusted Canon software. A Canon photo printer realises your creative vision with photo-lab quality prints.



Mount Adapter EF-EOS M



EF Lenses EF-S Lenses

EF and EF-S lenses

An EF-M mount adaptor accesses over 60 EF and EF-S lenses – expanding your creativity. Choose an ultra wide-angle lens to express the scale and majesty of a dramatic landscape. Zoom in on details or

pull distant subjects closer, with a telephoto zoom lens. Use a Macro lens to get superb close ups of the magnificent hidden detail of life.

Software

Your EOS M comes with all the software you need to easily view, organise and refine your photos. ImageBrowser EX lets you quickly and easily view and organise images on your computer. Digital Photo Professional (DPP) software makes it simple to fine tune your photos - taking you through intuitive menus to adjust exposure, colour, contrast and much more – so you can achieve the result you want.

Canon photo printers

Print exceptionally detailed, fine art quality images up to A3+ size with a PIXMA inkjet printer. Choose an affordable, compact, easy to use SELPHY printer for fast photo-lab quality prints.

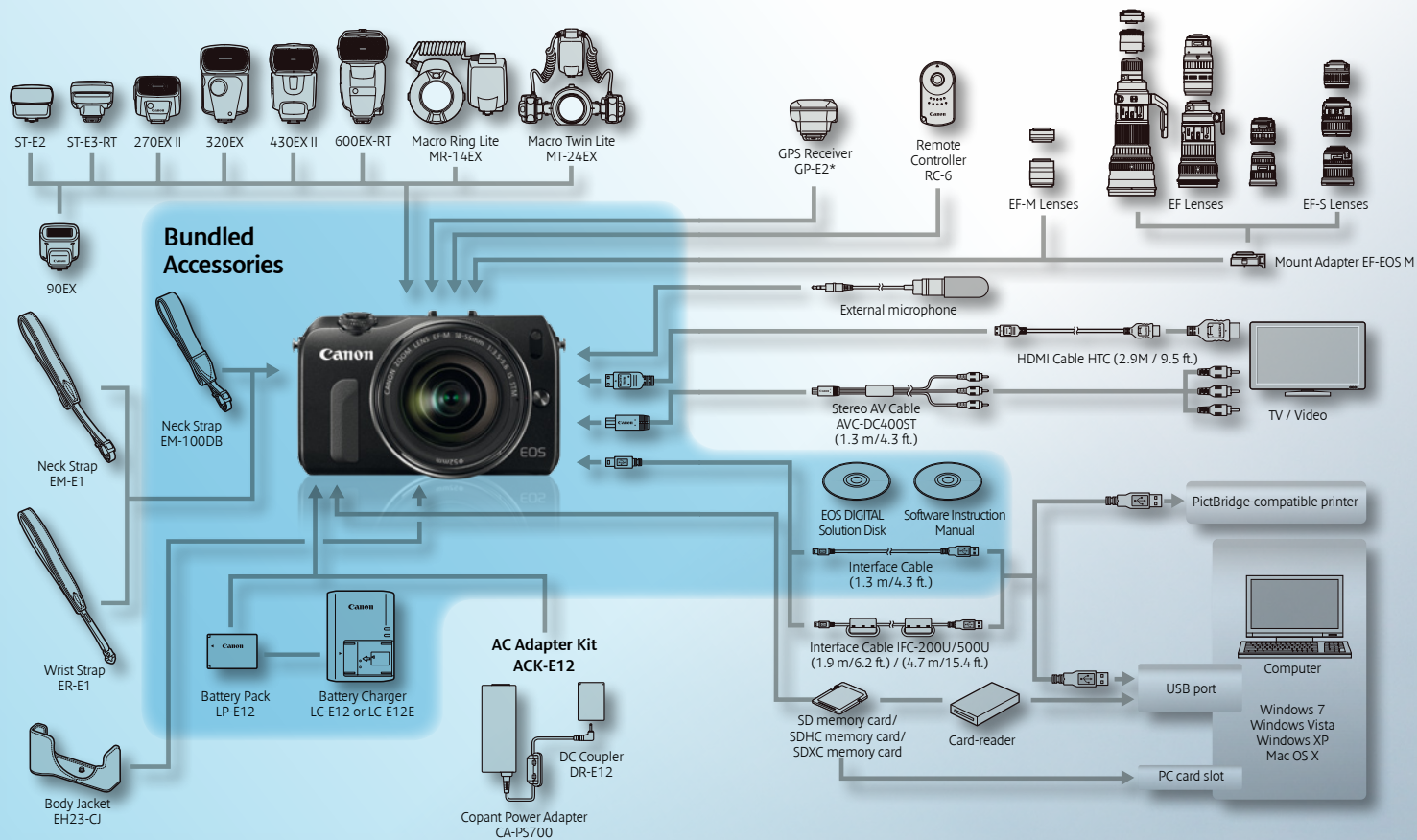


SELPHY CP810



PIXMA MG8250

System Chart



Specifications: EOS M

Sensor

Type
Cleaning
Approx. 18 Megapixel APS-C CMOS Sensor
EOS integrated cleaning system

Image Processor

Type
DIGIC 5

Lens

Lens Mount
EF-M (EF and EF-S lenses compatible via Mount adapter EF-EOS M)

Focusing

Autofocus System
Hybrid CMOS AF System. Phase detection pixels built onto imaging sensor

AF Points
31 AF points (Maximum)

AF point selection
Face detection and Tracking AF, FlexiZone-Multi, FlexiZone-Single

Manual Focus
Yes, Select in camera menu

Shutter

Type
Speed
Electronic first curtain and mechanical second curtain shutter
30-1/4000 sec (1/2 or 1/3 stop increments), Bulb

LCD Monitor

Size
7.7cm 3:2 Aspect Ratio

Type
ClearView LCD II approx 1040K dots

Touch Sensitive
Yes, Capacitive

Flash

Built-in
Hot Shoe
No
Yes

Shooting

Shooting modes
Scene Intelligent Auto mode
Stills mode: Creative Auto, Portrait, Landscape, Close-up, Sports, Night Portrait, Handheld Night Scene, HDR Backlight Control, Program AE, Shutter priority AE, Aperture priority AE, Manual
Movies mode: Auto exposure mode, Manual exposure mode

ISO Sensitivity
100-12800 in 1-stop increments
ISO can be expandable to H: 25600)

Continuous Shooting
Max. Approx. 4.3fps for approx. 17 JPEG images⁽¹⁾,
6 images RAW⁽²⁾⁽³⁾

Creative Filters
Art Bold, Water painting, Grainy B/W, Soft focus,
Toy Camera, Miniature effect, Fisheye

Recording formats

JPEG
RAW
RAW + Large JPEG

Movie Shooting

Type

MOV (Video: H.264, Sound: Linear PCM, recording level can be manually adjusted by user)

Size and frame rate
1920 x 1080 (29.97, 25, 23.976 fps)

1280 x 720 (59.94, 50 fps)

640 x 480 (30, 25 fps)

Movie Length
Max duration 29min 59sec, Max file size 4GB

Microphone

Built in Stereo

3.5mm Stereo mini jack

Storage

Type

SD, SDHC, SDXC (UHS-I)

Power source

Battery

1 x Rechargeable Li-ion Battery LP-E12

Battery life

Approx. 230 (at 23°C, AE 50%, FE 50%)⁽⁴⁾

Physical Specifications

Body materials

Stainless Steel, magnesium alloy, polycarbonate resin with glass fibre

External Interface

Hi-Speed USB

Video output (integrated with USB terminal)

HDMI mini output

External microphone (3.5mm Stereo mini jack)

108.6 x 66.5 x 32.3 mm

Dimensions

Weight (body only)

Approx. 298g (CIPA testing standard, including battery and memory card)

¹ Large/Fine(Quality 8) resolution

² Based on Canon's testing conditions, JPEG, ISO 100, Standard Picture Style. Varies depending on the subject, memory card brand and capacity, image recording quality, ISO speed, drive mode, Picture Style, Custom functions etc.

³ Maximum fps and buffer capacity may be reduced depending on the cameras settings and light level

⁴ Based on the CIPA Standard and using the batteries and memory card format supplied with the camera, except where indicated



All images used in the brochure are for illustrative purposes only. Some colour variations may not be available with all retailers and in some regions. All specifications are subject to change without any notice. All company and/or product names are trademarks and/or registered trademarks or their respective manufacturers in their markets and/or countries.

Canon Inc.

canon.com

Canon Europe

canon-europe.com

English Edition 0167W063
© Canon Europa N.V., 2012

Canon (UK) Ltd

Woodhatch
Reigate
Surrey
RH2 8BF
Telephone no 01737 220000
facsimile 01737 220022
canon.co.uk

Canon Ireland

3006 Lake Drive
Citywest, Saggart
Co.Dublin, Ireland
Telephone No: 01 2052400
Facsimile No: 01 2052525
canon.ie

Canon