



At the heart of the image



I AM FOR IMPORTANT MOMENTS

D3300

www.europe-nikon.com

D3300

Truly capture the atmosphere of important moments.

If you want to get more from your camera and still keep things simple, the new D3300 is your answer. Less powerful cameras, like those on smartphones, can miss fleeting, split-second moments; low-light shots are often blurred, and unless you're a fan of pixelated images, zooming in on distant subjects isn't really an option. To capture all the beauty of the moment, pair the D3300 with a NIKKOR lens, and your world will be full of vibrant, lifelike photos and movies that are only possible with a Nikon D-SLR.

- Superior images: 24.2 megapixels, EXPEED 4 image-processing engine, and ISO 12800.
- Precise fast-action shots: up to 5 fps continuous shooting and 11-point AF system.
- Step-by-step assistance: Guide Mode.
- Easy creative options: 13 striking special effects for photos and movies.
- High-quality sharing: via optional Wireless Mobile Adapter and a smart device.
- Lightweight system: small body, small kit lens.

Three body colours are available

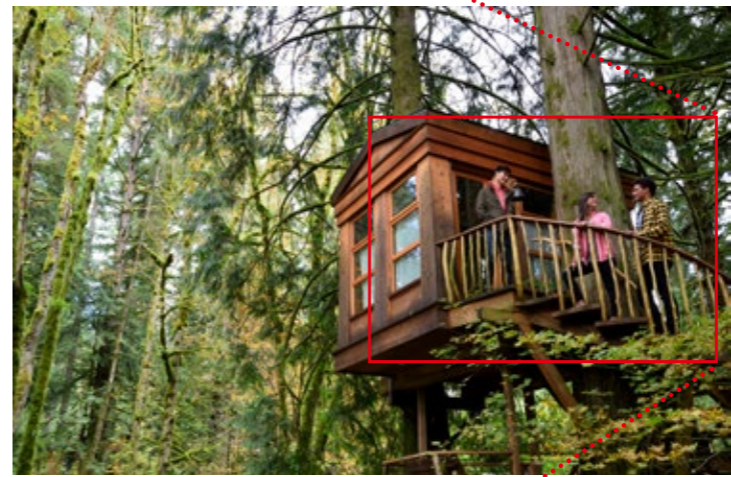


At the heart of the image

Experience the quality of 24.2 megapixels



The texture of the tree and stairway remains finely depicted, even after being trimmed out and enlarged from the picture on the right.



Capture all the details: Images to treasure

As a camera that offers 24.2 megapixels, the D3300 packs quite a punch. Paired with its high-resolution NIKKOR kit lens, this is a camera that captures unforgettable high-definition images. Every detail is crisp and clear, even if you crop or enlarge a portion of the photo. And thanks to the new EXPEED 4 image-processing engine, you don't lose any of that clarity if you shoot in low light.

The secret to beautiful images

Pair the D3300 with a NIKKOR lens

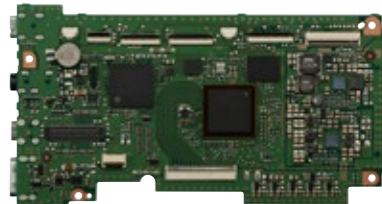
A great image starts with a great lens, and Nikon's entire range of NIKKOR lenses, including the kit lenses, are designed to take full advantage of the D3300's high pixel count: So you can capture stunning photos and movies.

The difference is in the details: DX-format image sensor

The image sensor is the heart of your camera, and the D3300 is a camera with a big heart. Its innovative 24.2-megapixel sensor is specifically designed without an optical low-pass filter, so it can capture even the finest details with stunning sharpness. Images are remarkably clear—especially when captured with a NIKKOR lens.

Crystal-clear images with true-to-life colour: New EXPEED 4 image-processing engine

Nikon's fast and powerful image-processing engine faithfully reproduces the colours you see, and ensures remarkably clear photos and smooth movies. Images are beautifully rendered, with rich colour gradation and minimised noise, even when you shoot in low light at high ISOs.



- Lens: AF-S DX NIKKOR 35mm f/1.8G
- Exposure: [A] mode, 1/200 s, f/3.5
- White Balance: Cloudy
- Sensitivity: ISO 200
- Picture Control: Standard



Shot at ISO 3200

**Amazing low-light performance:
ISO 100–12800 light sensitivity**

Want to avoid blurry or grainy images when you shoot in low light? Thanks to the D3300's wide light sensitivity range (ISO 100 to 12800, extendable to 25600 equivalent) and the excellent noise reduction performance of its new EXPEED 4 image-processing engine, you can shoot clear 24.2-megapixel images even in poor light. Enjoy the freedom to capture all the details in dark situations, or even shoot striking nightscapes without a tripod.



Shot at ISO 800

Step up on image quality

**More details in highlights and shadows:
Active D-Lighting powered by EXPEED 4**

Try using a smartphone to capture a photo under the midday sun, or in a room with light streaming through the window: You may end up with a washed-out image or find you've lost subject detail in the shadows. But shoot the same image with the D3300 and the camera's Active D-Lighting will automatically retain the details in both bright and dark areas, so you get a photo that captures all the beauty of the moment.



Active D-Lighting: On



Active D-Lighting: Off



- Lens: AF-S DX NIKKOR 18-300mm f/3.5-5.6G ED VR
- Exposure: [S] mode, 1/400 s, f/5.6
- White Balance: Auto
- Sensitivity: ISO 800
- Picture Control: Standard

Don't miss the best moments

Split-second timing: Fast 5 fps continuous shooting

Because photo-worthy action can be over in a split second, the D3300 offers high-speed continuous shooting of up to 5 frames-per-second. At that pace, you won't miss a thing when the action starts, and fleeting movements or expressions can be caught at just the right moment.

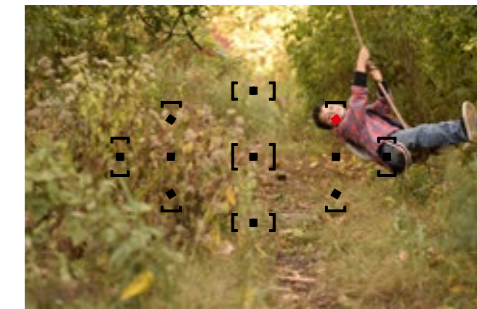
Track moving subjects with confidence: Viewfinder shooting

Take advantage of the D3300's wide optical viewfinder to easily capture perfectly timed photographs of fast-moving subjects from any distance. The viewfinder image reaches your eyes at the speed of light, so what you see

the moment you click the shutter is exactly what you will capture. Viewfinder shooting also helps minimise camera shake.

Fast, razor-sharp focus: 11-point AF system

No matter how quickly or erratically your subject is moving, the D3300 keeps everything in focus. When shooting candid photos, its razor-sharp 11-point AF system with a cross-type sensor in the centre will quickly lock onto your subject. The camera's Scene Recognition System ensures accurate subject identification and helps detect changes in composition, while four AF-area modes deliver sharp results whether your subject is off-centre, moving fast, or small and completely unpredictable.



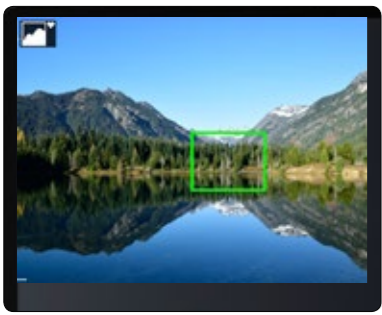
11-point AF system for reliable subject acquisition



Simply brilliant stills and movies

A familiar way to shoot: Large LCD monitor

When you want to make the D3300 as easy to use as a compact camera or smartphone, simply switch to Live View shooting and use the large 7.5-cm/3.0-in LCD monitor to capture photos and movies. An intuitive, familiar way to shoot, Live View makes it easy to confirm every aspect of the scene you want to capture.



Take it easy: Scene auto selector

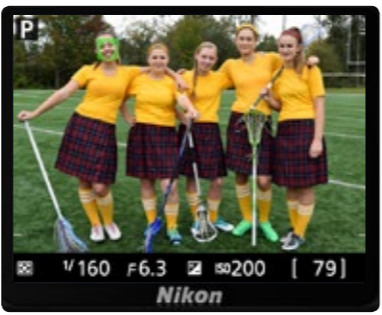
To quickly capture perfect shots without any effort at all, simply set the mode dial to auto or auto (flash off)*, and shoot with Live View. The camera will automatically activate scene auto selector and choose the scene mode that best suits the scene or subject you're shooting.

* When using autofocus
Note: For the situations not covered by portrait, landscape, close-up, or night portrait, auto or auto (flash off) will be selected.



Sharp focus in Live View: Four AF-area modes

Four AF-area modes help focus on your subject when shooting photos or movies in Live View. Face-priority AF detects and tracks faces within the frame; normal-area AF is ideal for stationary subjects; and wide-area AF is perfect for landscapes. Subject-tracking AF focuses on a moving subject and when combined with full-time servo AF, it maintains focus on unpredictable subjects that are moving around in all kinds of directions.



Face-priority AF

Discover the joy of Full HD movies: D-Movie mode

With the D3300 you don't just get superb photos, you can create impressive movies, too. The camera's D-Movie function can record Full HD movie footage at frame rates up to 50p/60p with full-time autofocus, meaning you get smooth recordings of even fast-moving action, plus a remarkable level of sharpness and clarity. The camera's newly incorporated special effects mode lets you add a unique touch to your movies, and the built-in microphone—plus compatibility with Nikon's external ME-1 Stereo Microphone—means you can film movies that don't just look good, but that sound great as well.



A tripod is recommended to reduce image blur caused by camera shake during movie recording.



The D3300: With you for important moments

Lightweight and comfortable: Small body, small kit lens



Small in size but big on image quality, the D3300 makes it more appealing than ever to use a D-SLR. Thanks to the new retractable kit lens, it's a much more compact system to carry than many other D-SLRs. The body is available in black, red, or grey, and a large comfortable grip makes it easy to hold the camera steady.

Ultra-lightweight and versatile kit lens: AF-S DX NIKKOR 18-55mm f/3.5-5.6G VR II



With an 18-55 mm focal range, the D3300's multipurpose kit lens is the easy way to capture great photos and movies in all kinds of everyday situations. Despite its incredibly compact and lightweight build, this 3x zoom lens still boasts Nikon's Vibration Reduction function, which ensures clear, blur-free images whether you're shooting fast action, taking a wide-angle group portrait in low light, or zooming in to capture distant subjects.

Your personal lighting assistant: Pop-up flash



When shooting in backlit or shaded conditions with the camera set to auto, portrait, child, close-up, or night portrait modes, the D3300 will automatically raise and fire the built-in flash, giving you just the right amount of extra light and a beautiful final result.



With built-in flash



Without built-in flash



The D3300 with the AF-S DX NIKKOR 18-55mm f/3.5-5.6G VR II lens compared with the D3200 system (indicated by the blue lines and areas).



Weighing in at a mere 195 g (approximately), the compact AF-S DX NIKKOR 18-55mm f/3.5-5.6G VR II lens delivers sharp results.

- Lens: AF-S DX NIKKOR 18-55mm f/3.5-5.6G VR II
- Exposure: [P] mode, 1/100 s, f/6.3
- White Balance: Auto
- Sensitivity: ISO 400
- Picture Control: Standard



Simply stunning shots: Let the D3300 be your guide



Scene modes: Perfect photos without adjusting any settings

Scene modes free you to take great photos without the need to adjust any camera settings. Simply rotate the mode dial to select portrait, landscape, child, sports, close-up, or night portrait, and the D3300 will automatically optimise shutter speed, ISO, and aperture for beautiful results.



Portrait



Landscape



Close-up



Child

Always at your side: Step-by-step assistance with Guide Mode

If you've always wanted to step up on image quality but were intimidated by the thought of operating a D-SLR, the D3300's Guide Mode could well become your new best friend. Easy to access and understand, Guide Mode shows you exactly how to capture the kind of photos and movies you want, and how to retouch images in-camera. With assist images and step-by-step explanations, Guide Mode is a great way to master key features and controls without even opening the camera manual!



Soften backgrounds



Functional simplicity

Change settings with ease: *i* button



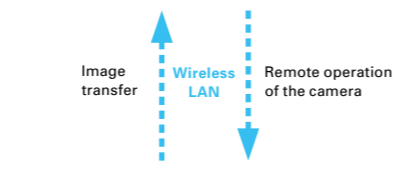
The *i* button, conveniently located on the back of the camera, lets you bypass the camera's main menu to quickly change settings while you shoot.

Easily share high-quality photos with friends and family



Share photos that will stand out amongst the smartphone crowd: Pair the D3300 with Nikon's optional WU-1a Wireless Mobile Adapter, and you can easily share high-quality photos on Facebook, Instagram, or Twitter via a smart device.* The adapter also enables the smartphone or tablet to release the camera shutter from a distance, which could lead to some great self-portraits.

* Compatible with iOS™ and Android™ smart devices. This feature requires use of a dedicated application that can be downloaded for free from Google Play™ and the Apple App Store™. Android, Google, Google Play, YouTube, and other marks are trademarks of Google Inc.



WU-1a Wireless Mobile Adapter attached to the D3300



Free image sharing and storage: NIKON IMAGE SPACE

NIKON IMAGE SPACE is a cloud service where Nikon users qualify for up to 20 GB of free storage space and can take advantage of easy one-click sharing to Facebook and Twitter. To find out more, visit nikonimagespace.com.



NIKON IMAGE SPACE
nikonimagespace.com



Have fun creating!

Release the artist within you: Special effects

With 13 special effects, the D3300 makes it easy to add a touch of artistry to your photos and movies. Use pop to brighten colours by increasing the saturation, create a retro effect with toy camera effect, or fit the whole view in with easy panorama. Simply set the mode dial

to Effects and select the option you want to apply before shooting.



Pop



Photo illustration



Toy camera effect



Easy panorama

Special effects featured in the D3300

- Night vision • Super vivid • Pop • Photo illustration¹ • Colour sketch¹ • Toy camera effect
- Miniature effect² • Selective colour • Silhouette • High key • Low key • HDR painting³
- Easy panorama³

1 A movie taken with this effect plays back like a slide show made up of a series of still images.
 2 A movie taken with this effect plays back at high speed.
 3 Movie recording and effect preview before shooting are not available for these effects.

Super vivid

See the world through our eyes



Choose your view: NIKKOR lenses

Image quality largely depends on the performance of the lens you're using, and our NIKKOR lenses are renowned across the world for their optical performance. The D3300 is compatible with the full range of DX-format NIKKOR lenses: Whichever you choose, you can enjoy the precision and flexibility to make the most of the camera's 24.2-megapixel resolution. Enjoy the freedom to capture photos with vivid colour and striking contrast, or experiment with cinematic effects when shooting movies.

NIKKOR
80 million NIKKOR

Capture expansive views
[Wide-angle zoom lens]



AF-S DX NIKKOR 10-24mm f/3.5-4.5G ED

This ultra wide-angle zoom lens is ideal for shooting dramatic landscape shots or images with exaggerated perspectives. Its widest position of 10 mm will capture the most majestic views.



Take more impressive portraits
[Prime lens]

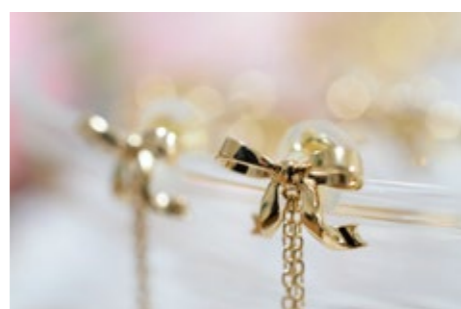


AF-S DX NIKKOR 35mm f/1.8G

With a fast maximum aperture of f/1.8, this prime lens is perfect for shooting portraits with beautifully blurred backgrounds. It's also a smart choice when you want to shoot in low light.



Shoot vivid close-ups of small subjects
[Micro lens]



AF-S DX Micro NIKKOR 40mm f/2.8G

For stunning, lifelike close-ups, this compact and lightweight micro lens is ideal. It has a fast maximum aperture of f/2.8 that will let you single out subjects against beautifully blurred backgrounds.



Get close to distant subjects
[Normal zoom lens]



AF-S DX NIKKOR 18-140mm f/3.5-5.6G ED VR

This 7.8x zoom lens is a great all-rounder. It features Nikon's Vibration Reduction system for blur-free images, and its quiet autofocus is especially useful when shooting movies.



Enrich each moment



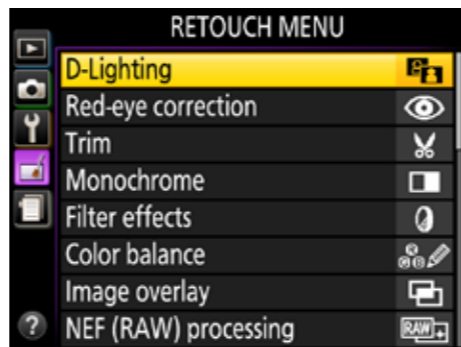
Bounce flash, using the SB-300, illuminates the baby with soft natural light.



SB-300 attached to the D3300

First-time flash: SB-300 Speedlight

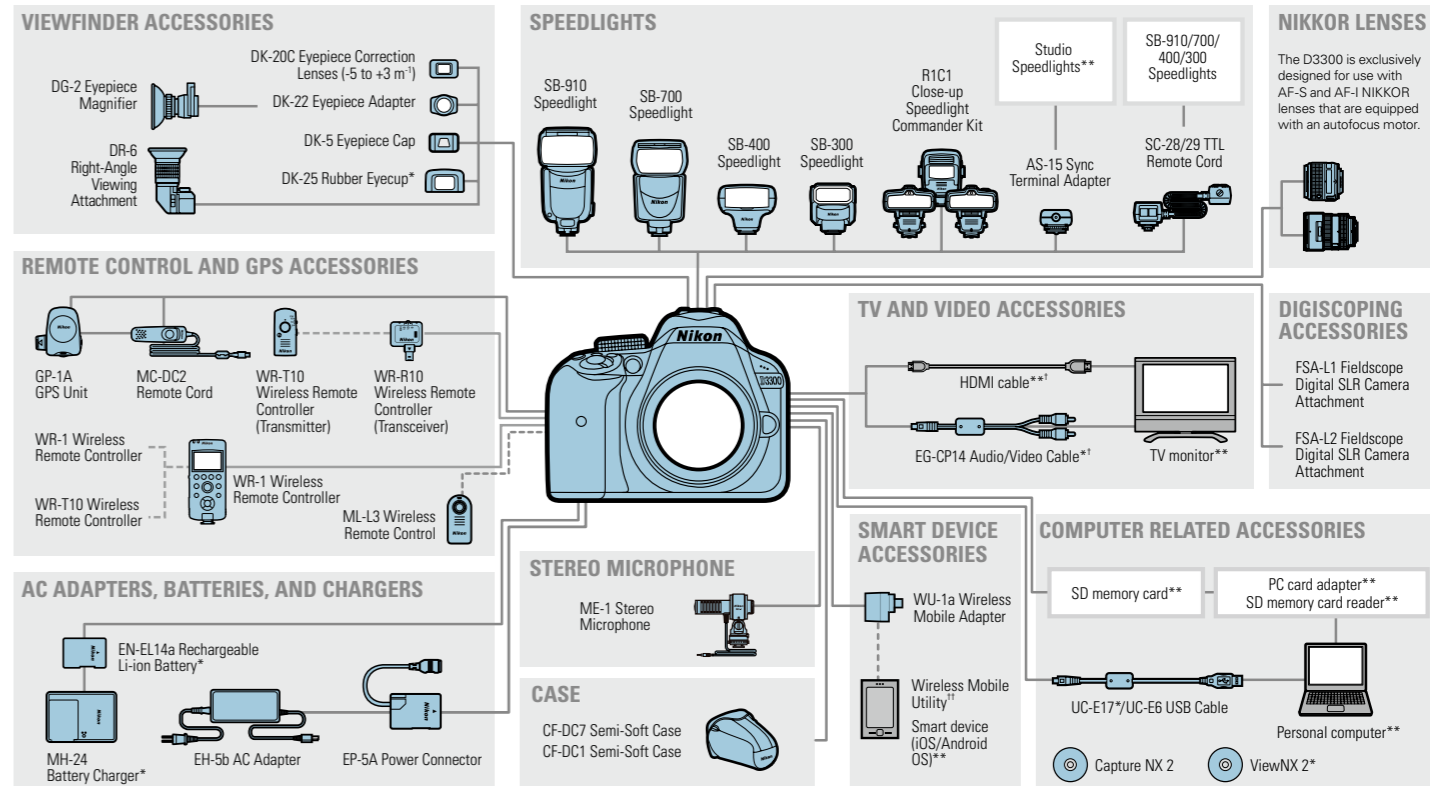
This compact and lightweight external flash unit is an easy way to achieve beautifully lit images. Use it to add impact to daylight images, enhance twilight shots, or expose more subject detail in backlit situations.



Twenty ways to enhance images in-camera: Retouch menu

The D3300's impressive in-camera retouch menu gives you 20 different ways to enhance photos and movies without using a computer. Quickly and easily do things like straighten a photo or convert an image to black-and-white.

System chart



† When a movie with sound recorded in stereo using an optional ME-1 Stereo Microphone is viewed on a television connected to the camera via an audio/video cable, the audio output is monaural. HDMI connections support stereo output.
 †† Can be downloaded from the application store of each smart device (free).

*Supplied accessories **Non-Nikon products

Specifications and equipment are subject to change without any notice or obligation on the part of the manufacturer. January 2014 ©2014 Nikon Corporation



WARNING

**TO ENSURE CORRECT USAGE, READ MANUALS CAREFULLY BEFORE USING YOUR EQUIPMENT.
SOME DOCUMENTATION IS SUPPLIED ON CD-ROM ONLY.**

Visit the Nikon Europe website at: www.europe-nikon.com



Nikon Europe B.V. Tripolis 100, Burgerweeshuispad 101, 1076 ER Amsterdam, The Netherlands
Nikon U.K. Ltd. Nikon House, 380 Richmond Road, Kingston upon Thames, Surrey KT2 5PR, U.K. www.nikon.co.uk
NIKON CORPORATION Shin-Yurakucho Bldg., 12-1, Yurakucho 1-chome, Chiyoda-ku, Tokyo 100-8331, Japan www.nikon.com