



Flat screen wall mount | tilt **TH-3050-RW**  
 Fits most displays from 32" to 55"



Mounting hole pattern:  
 from 100mm to 660mm wide  
 from 100 x 400mm high



Maximum weight carrying capacity:  
 85kg (187lbs)

The TH-30-50-RW is a highly versatile wall mounting solution ideal for portrait to landscape rotation. It features enhanced control over viewing position, with hassle-free adjustment to screen orientation, tilt and pan. The robust built-in ball joint enables the TV to be effortlessly adjusted by up to 20 degrees in any direction. This is coupled with easy rotation through 360 degrees to change from landscape to portrait orientation. This mount guarantees a professional, streamlined finish that adds style to any living room, office or commercial venue.



**Product key features:**

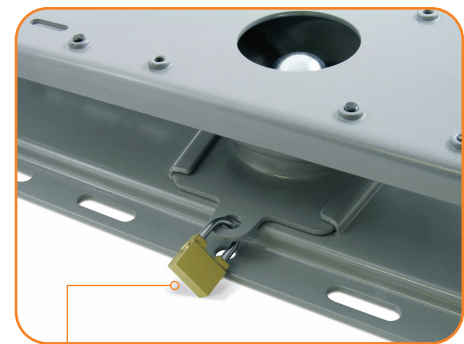
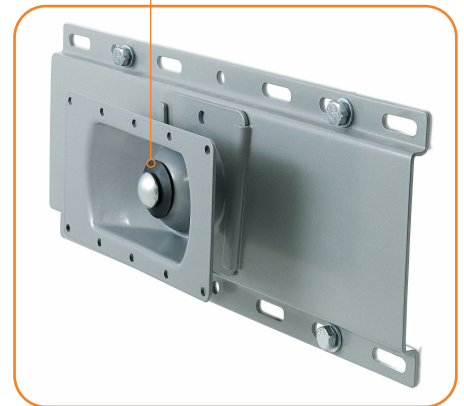
- Ideal for digital signage applications
- Infinite display adjustment of 20 degrees in any direction
- Distance from wall: 95mm (3.75")
- Supports VESA and non-VESA compliant displays
- 360° display rotation
- Theft resistant design (requires one small padlock)
- Comes with all mounting hardware for masonry, and timber stud installation

Portrait to landscape rotation



Universal mounting hole pattern

Ball joint mechanism allows infinite display adjustment up to 20 degrees in any direction



Theft resistant design (requires one small padlock)



Atdec North America [www.atdec.com](http://www.atdec.com)  
 Atdec Global [www.atdec.com.au](http://www.atdec.com.au)

## Product information, single unit

Load capacity	Material	Color
85kg (187lbs)	Steel	Silver

## Package information, single unit

Size	Ship weight	UPC code	Contents
76.2mm x 25mm x 10.2mm (30" x 10.25" x 3.75")	8.6kg (18.2lbs)	881493003637	All hardware required for installation supplied

## Package information, master pack

Size	Ship weight	UPC	Units per master pack
78.7mm x 27.9mm x 22.9mm (31" x 11.25" x 8.25")	18kg (38.2lbs)	881493003835	2

## Technical drawings

