



Widescreen Monitors

FlexScan®

Common sense features, uncommon quality

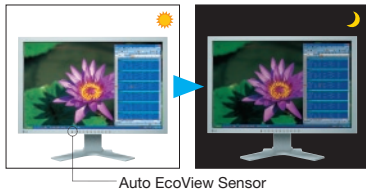


Optimized Brightness with Auto EcoView

A sensor on the front bezel measures ambient light and optimizes the screen's brightness, ensuring that these monitors are never too bright or too dark. This results in improved ergonomics and reduced eye strain, while cutting power consumption by up to 51%.

Model	Auto EcoView OFF*	Auto EcoView ON	Power Reduction
FlexScan S2233W	66 W	32 W	51%
FlexScan S2243W	69 W	36 W	47%
FlexScan S2433W	71 W	40 W	43%

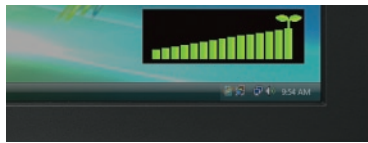
* Figures for Auto EcoView turned off assume monitors are set to the default factory brightness of 100%.



Auto EcoView optimizes the screen's brightness to levels akin to viewing a sheet of paper under ambient light conditions.

Confirm Power Savings with EcoView Index

A user-activated on-screen index shows the level of power savings in correlation with the monitors' brightness to encourage environmental consciousness while working.



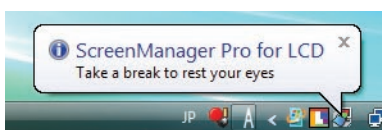
When EcoView Index is fully illuminated, the monitor is operating at optimum energy efficiency.

EyeCare Mode

These models are the first FlexScan monitors to incorporate EIZO's new EyeCare mode. This mode provides a more comfortable viewing experience and helps to mitigate eye fatigue when working in very dim ambient light. With just a touch of a button, the user can reduce screen brightness to a minimum of 4 cd/m². EyeCare mode also works with the monitors' Auto EcoView function by automatically increasing or decreasing luminance to user-defined preset levels, thereby more accurately achieving ideal screen brightness in both brightly and very dimly lit rooms.

EyeCare Manager

EIZO's EyeCare Manager prompts workers to take scheduled breaks to avoid eye fatigue caused by prolonged monitor use. EyeCare also totals and displays on-screen the monitors' usage hours for each day and month to promote worker appreciation of improved work habits.



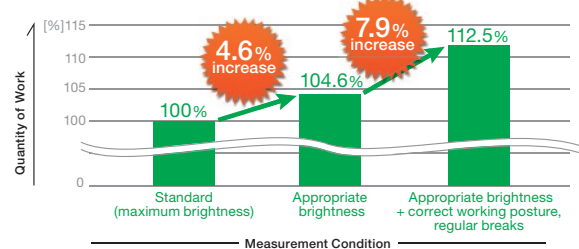
EyeCare reminds workers to take regular breaks to prevent eye fatigue.

Improved Efficiency, Reduced Visual Fatigue

EIZO conducted a survey in 2008 to establish the relationship between eye fatigue and monitor use. Results showed that features like Auto EcoView, ergonomic stands, and the EyeCare Manager helped reduce eye fatigue and improved work efficiency by 12.5%.

For a white paper regarding this study please visit www.eizo.com/support/wp/pdf/wp_08-001.pdf

Increases in Quantity of Monitor Work



Zero Watts When Turned Off

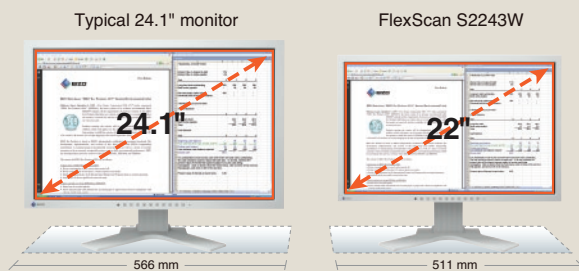
The power save mode and off timer on these monitors reduces their energy consumption to less than 1.5 watts. When turned off via the main power switch, they consume no electricity at all.

Fine Contrast for Optimum Viewing

EIZO's Fine Contrast function has six modes: Text mode for office applications, Movie mode for video, Picture mode for graphics, sRGB mode for web browsing, EyeCare mode for use in very dimly-lit environments, and Custom mode for user-defined settings.

Compact, High Resolution Screen

The FlexScan S2243W features a 16:10 aspect ratio with a 1920 × 1200 native resolution. Thanks to its 0.247 mm pixel pitch and display of 103 pixels per inch, it shows 30% more information than a typical 22" monitor with a 1680 × 1050 resolution. The FlexScan S2243W displays the same amount of information as a typical 24.1" monitor, but occupies 10% less desk space. This is ideal for offices or trading floors where a 24.1" monitor is desired, but cannot be installed due to space constraints.



The FlexScan S2243W occupies 10% less desk space than a typical 24.1" monitor, but displays the same amount of information.

Next Generation Connectivity

Connect up to three computers at once via the monitors' DVI-D (digital), D-Sub (analog), and DisplayPort (digital) input terminals. With a DisplayPort connection, audio and video signals are transmitted via a single, high-bandwidth cable at distances up to 15 meters without any signal degradation.



DVI Input Level Adjustment

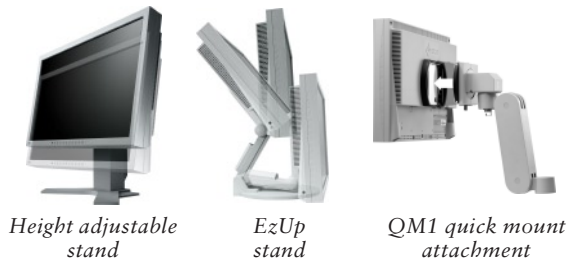
Compensates for degradation of image quality that may occur when connecting a monitor with a signal switch box or via a long cable.

Individual Adjustment of Gamma

To provide better image consistency in multi-monitor environments, EIZO performs advanced gamma adjustment at the factory, which minimizes discrepancies among monitor gamma characteristics.

Placement Flexibility

A selection of ergonomic stands offer height adjustment, tilt, swivel, and portrait mode viewing. For installations that require frequent rearrangement of equipment, a quick mount attachment option allows the monitor to be quickly and easily mounted and dismounted with the pull of a lever.



Accessories

Available accessories include mounting arms and panel protectors.

For compatibility information please visit www.eizo.com/products/accessories/

Wide Color Gamut / EasyPIX Compatibility

The wide color gamut of the FlexScan S2243W and S2233W reproduces 95% of Adobe RGB, while that of the S2433W reproduces 96% of Adobe RGB. Compatibility with the optional EIZO EasyPIX accessory allows for simple color matching between monitor and photo prints.



Reduced Network Power Consumption

For businesses using multiple monitors, EIZO's EcoView NET power management software gives administrators centralized control over the power settings of networked monitors to help reduce electricity consumption and provide long-term energy savings and a smaller carbon footprint.

For details see www.eizo.com/products/accessories/lcd/ecoview_net/

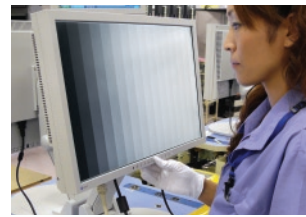
Organize Applications with EIZO ScreenSlicer

This bundled software utility lets a user more effectively use the monitors' screen through partitioning. Simply drop windows into configurable partitioned areas and they will be aligned instantly.



Software windows aligned in partitioned areas.

Commitment to Quality



Eizo monitors are thoroughly inspected at every step during manufacturing to maintain strict quality control.

While outsourcing production is now common practice in the monitor industry, EIZO continues to manufacture its products the same way it has throughout its 40 year history — with its own staff at its own factories. This

allows EIZO to keep close control over production quality and offer the industry's only 5-year manufacturer's limited warranty.



Customer Assurance

EIZO strives to create a better work environment by complying with strict environmental performance requirements for low energy consumption, product and package recyclability, and manufacturing processes, as well as specific ergonomic and functional conditions. This has earned all monitors in this brochure the Green Economic Council and USA EPA consumer environmental assessment rating — EPEAT Gold — and TCO Displays 5.0 certification. The EIZO Eco Products 2009 label indicates these products meet strict internal requirements for design, manufacturing, packaging, usage and power consumption. The Windows 7 Certified label indicates these monitors are compatible with Windows 7.





FlexScan S2433W

FlexScan S2243W

FlexScan S2233W

Model Variations	Height Adjustable Stand, EzUp Stand, Without Stand		
Panel Size	24.1" / 61 cm (611 mm diagonal)	22" / 56 cm (558 mm diagonal)	
Active Display Size (H × V)	518.4 × 324 mm	473.8 × 296.1 mm	
Panel Type	VA (with overdrive circuit)		
Viewing Angles (H, V)	178°, 178° (at contrast ratio of 10:1)		
Brightness	360 cd/m ²	350 cd/m ²	
Contrast	1000:1	1200:1	
Response Time (Typical)	Gray-to-gray: 6 ms, black-white-black: 16 ms	Gray-to-gray: 6 ms, black-white-black: 12 ms	
Native Resolution	1920 × 1200 (16:10 aspect ratio)		1680 × 1050 (16:10 aspect ratio)
Pixel Pitch	0.270 × 0.270 mm	0.247 × 0.247 mm	0.282 × 0.282 mm
Display Colors	16.77 million from a palette of 1.06 billion		
Wide Gamut Coverage	Adobe RGB: 96%, 92% vs. NTSC	Adobe RGB: 95%, 92% vs. NTSC	
Cabinet Colors	Gray, Black		
Dot Clock	Analog: 202.5 MHz, Digital: 162 MHz		Analog: 150 MHz, Digital: 120 MHz
Analog Scanning Frequency (H, V)	31 – 94 kHz, 55 – 76 Hz		31 – 82 kHz, 55 – 76 Hz
Digital Scanning Frequency (H, V)	31 – 76 kHz, 59 – 61 Hz (VGA Text: 69 – 71 Hz)		31-65 kHz, 59-61 Hz (VGA Text: 69-71 Hz)
Video Input Terminals	D-Sub mini 15 pin, DVI-D 24 pin (with HDCP), DisplayPort (with HDCP)		
Audio Input Terminals	3.5 mm stereo jack		
Audio Output Terminals	3.5 mm headphone jack		
Speakers	0.5 W + 0.5 W speakers		
USB Ports / Standard	1 upstream, 2 downstream / USB 2.0		
Plug & Play	VESA DDC 2B		
Power Requirements	AC 100 – 120 V / 200 – 240 V, 50 / 60 Hz		
Power Consumption	95 W (maximum), 40 W (typical)	90 W (maximum), 36 W (typical)	90 W (maximum), 32 W (typical)
Power Save Mode	Less than 1.5 W		
Height Adjustment Range	With Height Adjustable Stand: 82 mm With EzUp Stand: 153.1 mm	With Height Adjustable Stand: 82 mm With EzUp Stand: 165 mm	
Tilt / Swivel / Pivot	With Height Adjustable Stand: 40° Up, 0° Down / 35° Right, 35° Left / 90°, With EzUp Stand: 25° Up, 0° Down / 172° Right, 172° Left / 90°		
Dimensions (W × H × D)	With Height Adjustable Stand: 566 × 456 – 538 × 208.5 mm With EzUp Stand: 566 × 380.4 – 533.5 × 279.9 – 307.6 mm Without Stand: 566 × 367 × 85 mm	With Height Adjustable Stand: 511 × 439 – 521 × 208.5 mm With EzUp Stand: 511 × 351.5 – 516.5 × 279.9 – 307.5 mm Without Stand: 511 × 333 × 85 mm	
Net Weight	With Height Adjustable Stand: 10.2 kg / 22.5 lbs With EzUp Stand: 12 kg / 26.5 lbs Without Stand: 7.2 kg / 15.9 lbs	With Height Adjustable Stand: 9.6 kg / 21.2 lbs With EzUp Stand: 11.4 kg / 25.1 lbs Without Stand: 6.6 kg / 14.6 lbs	
Preset Modes	Fine Contrast (EyeCare, Text, Picture, Movie, sRGB, Custom), Auto Fine Contrast ¹		
EcoView Settings	Auto EcoView, EcoView Index		
Screen Adjustment	Clock, Phase, Position, Range (Auto), Signal Filter, Screen Size (full screen, enlarge, normal), Smoothing (5 stages), Border Intensity		
Color Adjustment	Brightness, Contrast, Gamma, Temperature, Saturation, Hue, Gain, Reset		
Power Management	Power Save (VESA DPMS, DisplayPort Rev. 1.1a, and DVI DMPM), Off Timer		
Sound	Volume, Power Save, Source (DisplayPort)		
Other Settings	Signal Switching, Product Information (name, serial number, resolution, operating time, etc.), OSD Menu Settings, Key Lock, DDC/CI, Languages (English, French, German, Italian, Japanese, Simplified and Traditional Chinese, Spanish, Swedish), Power Indicator, Reset		
Certifications and Standards	TCO Displays 5.0, EPEAT Gold, TÜV/Ergonomics (including ISO 13406-2), TÜV/GS, c-Tick, CE, CB, UL (cTÜVus), CSA (cTÜVus), FCC-B, Canadian ICES-003-B, TÜV/S, VCCI-B, EPA Energy Star, RoHS, WEEE, EIZO Eco Products 2009		
Supplied Accessories	AC power cord, signal cables (DVI-D – DVI-D, D-Sub – D-Sub), USB cable, audio cable, EIZO LCD Utility Disk (PDF user's manual, ScreenManager Pro for LCD, ScreenSlicer software), setup guide, 4 screws for mount option (EzUp stand and free mount options only), warranty card, cable holder (EzUp stand option only)		
Warranty	Five Years ²		

¹ The bundled ScreenManager Pro for LCD is necessary to activate Auto Fine Contrast. ScreenManager Pro for LCD is compatible with Microsoft Windows Vista/XP. ² The usage time is limited to 30,000 hours or less, and the warranty period of the LCD panel is limited to three years from the date of purchase. With current LCD technology, a panel may contain a limited number of missing or flickering pixels.

These monitors were developed, manufactured, and quality control tested by EIZO in Japan.

All product names are trademarks or registered trademarks of their respective companies. EcoView NET and EasyPIX are trademarks, EIZO and FlexScan are registered trademarks of Eizo Nanao Corporation. Specifications are subject to change without notice. Copyright© 2009 Eizo Nanao Corporation.



www.eizo.com

EIZO NANA O CORPORATION 153 Shimokashiwano, Hakusan, Ishikawa 924-8566 Japan Phone +81-76-277-6792 Fax: +81-76-277-6793