



Philips Brilliance
AMVA LCD monitor, LED
backlight with
PowerSensor

P-line

27" / 68.6cm Full HD display

Brilliance

271P4QPJEB



Sustainable eco design display

with PowerSensor saves energy bills

The Philips PowerSensor AMVA LED display using 65% post consumer recycled plastics and PVC, BFR free housing is ideal for eco-friendly productivity.

Sustainable Eco-design

- PowerSensor saves up to 80% energy costs
- Zero power consumption with 0 watt hard switch
- 65% post consumer recycled plastics with TCO Edge
- PVC-BFR free housing

Brilliant performance

- AMVA LED for wide-view super-high contrast, vivid images
- DisplayPort offers audio and video over a single, long cable
- Built-in stereo speakers for multimedia
- HDMI ensures universal digital connectivity

Designed for people

- SmartErgoBase enables people-friendly ergonomic adjustments
- Low bezel-to-table height for maximum reading comfort

Easy to experience

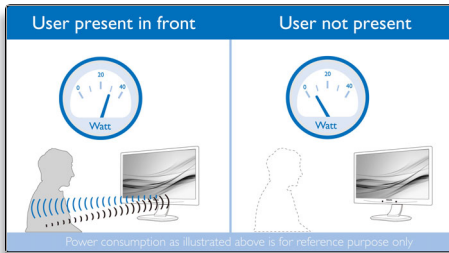
- SmartImage presets for easy optimized image settings

PHILIPS

sense and simplicity

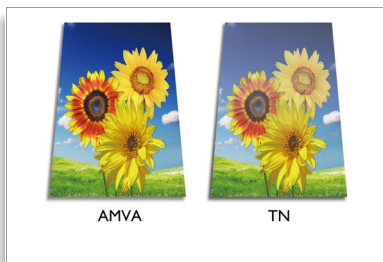
Highlights

PowerSensor



PowerSensor is a built-in 'people sensor' that transmits and receives harmless infrared signals to determine if user is present and automatically reduces monitor brightness when user steps away from the desk, cutting energy costs by up to 80 percent and prolonging monitor life

AMVA LED display



Philips AMVA LED display uses an advanced multi-domain vertical alignment technology which gives you super-high static contrast ratios for extra vivid and bright images. While standard office applications are handled with ease, it is especially suitable for photos, web-browsing, movies, gaming, and demanding graphical applications. Its optimized pixel management technology gives you 178/178 degree extra wide viewing angle, resulting in crisp images even in 90 degree pivot mode

DisplayPort

DisplayPort is a digital link from PC to Monitor without any conversion. With higher

capabilities than DVI standard, it is fully capable to support up to 15meter cables and 10.8 Gbps/sec data transfer. With this high performance and zero latency, you get the fastest imaging and refresh rates - making DisplayPort the best choice for not only general office or home use, but also for the demanding gaming and movies, video editing and more. It also keeps interoperability in mind via use of various adapters.

SmartErgoBase

The SmartErgoBase is a monitor base that delivers ergonomic display comfort and provides cable management. The base's people-friendly height, swivel, tilt and rotation angle adjustments position the monitor for maximum comfort that can ease the physical strains of a long workday; cable management reduces cable clutter and keeps the workspace neat and professional.

HDMI Ready



A HDMI-ready device has all the required hardware to accept High-Definition Multimedia Interface (HDMI) input, high quality digital video and audio signals all transmitted over a single cable from a PC or any number of AV sources including set-top boxes, DVD players and A/V receivers and video cameras.

Built-in stereo speakers

A pair of high quality stereo speakers built into a display device. It can be visible front firing, or

invisible down firing, top firing, rear firing, etc depending on model and design.

Low bezel-to-table height

The Philips monitor, thanks to its advanced SmartErgoBase, can be lowered down almost to desk level for a comfortable viewing angle. Low bezel-to-table height is the perfect solution if you use bifocals, trifocals or progressive lens glasses for your computing work. Additionally, it allows for users with greatly different heights to use the monitor in their preferred angle and height settings, helping them reduce fatigue and strain.

TCO Edge

TCO Edge certification is given to products which go beyond existing eco-labeling programs. Over and above standard TCO requirements, it further mandates that the product uses minimum 65% of post consumer recycled plastics, is energy efficient, uses minimal hazardous materials, has 100% recyclable packaging, and is designed for easy recycling amongst other requirements. You can rest assured that this Philips monitor is a cutting edge technology product which is best in class ICT, benefiting you and the planet while helping you make a responsible green IT purchase!

PVC-BFR free housing

This Philips monitor housing is free from brominated flame retardant and polyvinyl chloride (PVC-BFR free)

Zero power consumption

At the flick of the 0 watt hard switch which is conveniently located at the back, you can completely cut-off your monitor from AC power. This results in zero power consumption reducing your carbon footprint even further



Specifications

Picture/Display

- LCD panel type: AMVA LCD
- Backlight type: W-LED system
- Panel Size: 27 inch / 68.6 cm
- Effective viewing area: 597.6 (H) x 336.15 (V)
- Aspect ratio: 16:9
- Optimum resolution: 1920 x 1080 @ 60Hz
- Response time (typical): 12 ms
- SmartResponse (typical): 6 ms (Gray to Gray)
- Brightness: 300 cd/m²
- Contrast ratio (typical): 5,000:1
- SmartContrast: 20,000,000 :1
- Pixel pitch: 0.311 x 0.311 mm
- Viewing angle: 178° (H) / 178° (V), @ C/R > 10
- Picture enhancement: SmartImage
- Display colors: 16.7 M
- Scanning Frequency: 30 - 83 kHz (H) / 56 - 75 Hz (V)
- sRGB

Connectivity

- Signal Input: DisplayPort, HDMI, DVI-D (digital, HDCP), VGA (Analog)
- USB: USB 2.0 x 4
- Sync Input: Separate Sync, Sync on Green
- Audio In/Out: PC audio-in, Headphone out

Convenience

- Built-in Speaker: 2Wx2
- User convenience: SmartImage, Volume, PowerSensor, Menu, Power On/Off
- Control software: SmartControl Premium
- OSD Languages: English, French, German, Italian, Portuguese, Russian, Simplified Chinese, Spanish
- Other convenience: Kensington lock, VESA mount (100x100mm)
- Plug & Play Compatibility: DDC/CI, Mac OS X, sRGB, Windows 7/Vista/XP

Stand

- Height adjustment: 150 mm
- Pivot: 90 degree
- Swivel: -65/65 degree
- Tilt: -5/20 degree

Power

- ECO mode: 23 W (typ.)
- On mode: 27.6 W (EnergyStar 5.0 test method)
- Standby mode: 0.3 W
- Off mode: Zero watts with Zero switch
- Power LED indicator: Operation - White, Standby mode- White (blinking)
- Power supply: 100-240VAC, 50-60Hz, Built-in

Dimensions

- Product with stand (mm): 639 x 580 x 242 mm
- Product without stand (mm): 639 x 405 x 64 mm
- Packaging in mm (WxHxD): 750 x 234 x 490 mm

Weight

- Product with stand (kg): 7.50 kg
- Product without stand (kg): 5.10 kg
- Product with packaging (kg): 10.35 kg

Operating conditions

- Temperature range (operation): 0°C to 40°C °C
- Temperature Range (storage): -20°C to 60°C °C
- Relative humidity: 20%-80 %
- Altitude: Operation: +12,000ft (3,658m), Non-operation: +40,000ft (12,192m)
- MTBF: 30,000 hour(s)

Sustainability

- Environmental and energy: PowerSensor, EnergyStar 5.0, EPEAT Gold*, TCO edge, RoHS
- Recyclable packaging material: 100 %
- Post consumer recycled plastic: 65%
- Specific Substances: PVC / BFR free housing, Mercury free, Lead free

Compliance and standards

- Regulatory Approvals: BSMI, CE Mark, FCC Class B, GOST, SASO, SEMKO, TUV Ergo, TUV/GS, TCO 5.2, UL/cUL, WEEE

Cabinet

- Front bezel: Black
- Rear cover: Black
- Foot: Black
- Finish: Texture



Issue date 2012-10-06

Version: 3.0.1

12 NC: 8670 000 93299
EAN: 87 12581 65471 9

© 2012 Koninklijke Philips Electronics N.V.
All Rights reserved.

Specifications are subject to change without notice.
Trademarks are the property of Koninklijke Philips Electronics N.V. or their respective owners.

www.philips.com

* EPEAT Gold is valid only where Philips registers the product. Please visit www.epeat.net for registration status in your country.