



HX301G

MICRO PORTABLE, STANDALONE XGA LED PROJECTOR

OVERVIEW

RESOLUTION



BRIGHTNESS (ANSI-LUMEN)



CONTRAST RATIO



LAMP LIFE (HOURS)



FEATURE



DESIGN

Stylish glossy black color. Slim & compact size



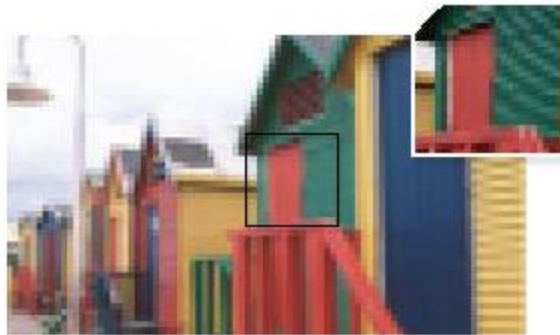
HX301G FEATURE



WORLD'S FIRST XGA LED PROJECTOR

XGA

HX301G provides superior picture with XGA resolution which is world's first among LED projectors.



SVGA



XGA

FEATURE



WORLD'S BEST BRIGHTNESS LED PROJECTOR



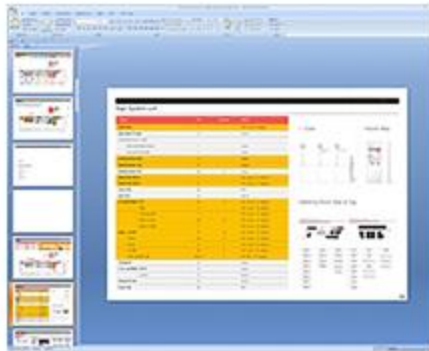
FEATURE



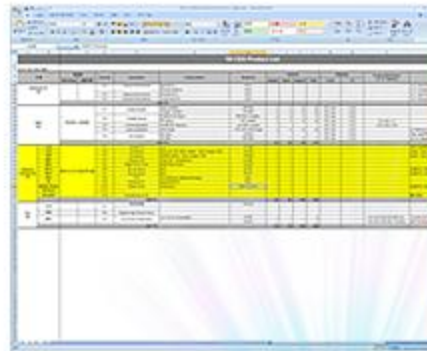
FILE VIEWER



File viewer function enables user to show ppt or excel file by simply insert USB memory to HX301G without converting original file (available with word file, PDF file)



PPT FILE



EXCEL FILE



FEATURE

HD DIVX PLAYER VIA USB 2.0



FEATURE

30,000HRS LAMP LIFE TIME (LED)



SUPER LONG LASTING LAMP

4 hours a day, HX301G lasts 20 years.



GREEN TECHNOLOGY (MERCURY FREE)

100% free of mercury or other hazardous materials found in most lamps.
No more discarded bulbs, reducing the amount of toxic solid waste in our landfills.

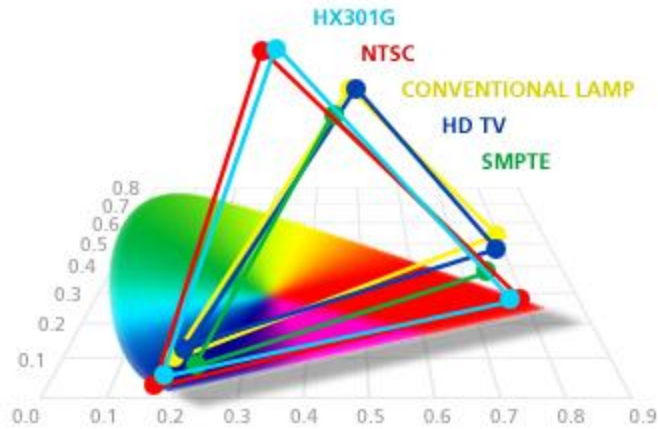


FEATURE



SUPERIOR PICTURE QUALITY

LED reproduce 114% Wider Color Range & Deeper color saturation.
Ultra-Fast pulsing of LED light eliminates motion blur and color break up.



LED LAMP(HX301)



CONVENTIONAL

FEATURE



REAL QUICK ON/OFF

Instant-on with full brightness within 5 sec.



FEATURE



TWIN XD ENGINE



Two XD Engines reproduce more details & vivid color by adjusting picture quality twice in circuit and in LED control Board.

Twin XD engine is premium picture control engine made from LGE's 10 years picture quality technology.



INPUT SIGNAL

1ST ADJUSTMENT
IN CIRCUIT



1ST ADJUSTMENT

2ND ADJUSTMENT
IN LED
CONTROL BOARD



FINAL PICTURE

FEATURE



EASY USER INTERFACE

Graphic based user interface helps you to use menu easier.



PREVIOUS UI



HX301G UI

FEATURE



WIDE KEYSTONE



HX301G $\pm 40^\circ$ keystone correction means wider projection scenes, as compared with conventional projectors keystone $\pm 12^\circ$, giving you a 28% increase.

CONVENTIONAL
PROJECTORS



$\pm 12^\circ$



HX301G



$\pm 40^\circ$



FEATURE



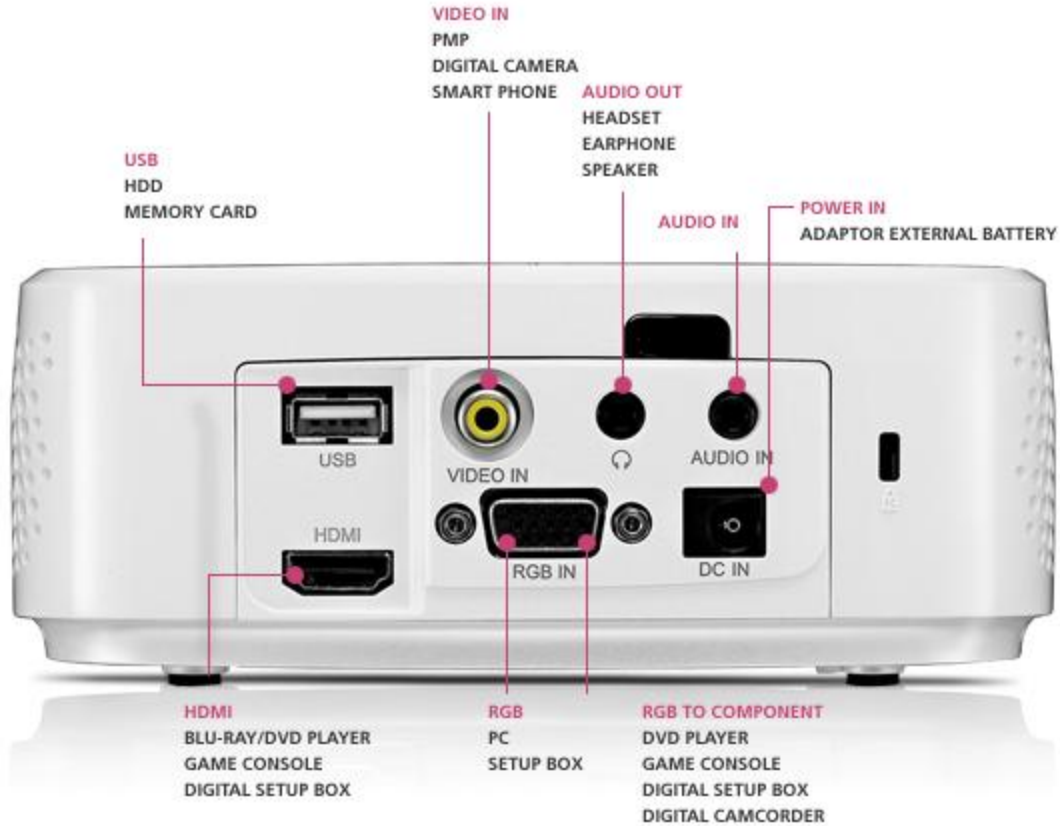
PROJECTION DISTANCE / BRIGHTNESS



FEATURE



INPUT / OUTPUT



FEATURE



USING SCENES

Home entertainment



Gaming



Movie



Information



2nd TV

Education & Business solution



Signage



Education



Presentation

Outdoor activities



Easy Link



Outdoor



SPECIFICATION

Projection System		DLP
Display Technology		0.55" DMD
Native Resolution		XGA(1024 x 768)
Brightness(ANSI-Lumens)		270
Contrast Ratio(FOFO)		2000:1
Noise	High Brightness	28dB
	Economic	22dB
Uniformity		>85%
Color wheel		-
Projection Lens	Focus	Manual
	Zoom	Fixed
Projection Image	Standard	40"@1.1m
	Throw Ratio	1.35
Projection Offset		110%
Lamp	Type / Maker	LED RGB
Life time	High Brightness	30,000 Hrs
	Economic (Eco mode)	

General Specification		DLP
Menu Language		Korean/English/French/Spanish/German/Italian/Swedish/Portuguese /Chinese Simplified/ Polish/Brazilian Portuguese/Japanese/Russian/Greek/Arabic/Turkish/Taiwanese
Aspect Ratio Correction		Native 4:3,Support Just Scan/Set By Program / 16:9/Zoom/Cinema Zoom
Sound		1W+1W Stereo
Dimension (WxHxD, mm)		160x 136.3x57.5
Weight		786g
Power Consumption		Max 100W
Stand by Power		< 1W
Power Supply		AC DC Adaptor(100~240 free voltage), 50/60 Hz
Input Signal Compatibility	Digital(HDMI)	1080p/1080i/720p/576p/480p, up to WSXGA+(1680x1050@60Hz)
	RGB	Up to WSXGA+(1680x1050@60Hz)
	Component Video	1080P/1080i/720p/576p/576i/480p/480i
	Composite Video	NTSC-M/NTSC 4.43/PAL/PAL-M/PAL-N/SECAM

SPECIFICATION

INPUT/OUTPUT Terminals	DLP
RGB in	1
RGB(PC) Audio in	1
RGB out	-
Composite(AV) in	1 (Video Only)
S video	-
Component (YPbPr)	1 (Thru RGB)
Audio out	1(mini Jack)
RS-232C	-
RJ45	-
HDMI	1
USB	1 (type A)

Special Features	DLP
Digital Keystone Correction	O (Vertical) 40%
Picture Still	O
Auto Source Detection	O
Quick Power on/off	O
Auto Sleep	O
Blank	O(Blue, Green, Logo, User Image)
Image Flip	O(Horizontal/Vertical)
Color Temperature	O
Lens Shift	-
Over Scan	-
Brilliant Color™	O (Overlap 35%)
Black Level Control	O
Expert control	O
VIDI™	-
3D Ready	-
Picture Quality Certification	-

Added Features	DLP
USB Host (MP3, DivX, Photo) Divx Player	O
File viewer (Office, PDF, HWP)	O
FM Wireless Audio	-

Design	DLP
Cabinet Color	White
Local Key	O
Kensington Lock	O
Lamp	-

Accessory	DLP
Carry Bag	O
Manual	O (CD)
Remote control	O
RC Battery	AAA*2EA
Cable	D-sub, RGB to Comp, Power cord
Etc.	External Battery (Option)
Safety Regulation	CE, IEC, MIC, USA/Japan/Chinese