

NEC MultiSync® PA242W

24" LED-backlit color accurate LCD display



With its innovative GB-R LED backlight, the new 24" MultiSync PA242W delivers accurate, stable color ideal for photography and print matching applications.

Features

- 10-bit GB-R LED-backlit AH-IPS LCD with wide viewing angles provide optimum performance for displaying color images
- Wide color gamut delivers 99.3% coverage of AdobeRGB, 94.8% coverage of NTSC [1953] and accurate 100% sRGB coverage
- Internal 14-bit programmable 3D lookup tables (LUTs) allow the display of 1.07 billion colors out of a palette of 4.3 trillion* for lossless color images and hardware calibration
- Future-proof connectivity with 10-bit DisplayPort, 10-bit HDMI, DVI-D with HDCP and VGA
- USB hub (2 up/3 down) with DisplaySync Pro™ KVM, which controls two computers with only one keyboard and mouse
- MultiProfiler software loads any ICC profile directly into the monitor for optimal color space matching

*with 10-bit DisplayPort input. 16.7 million colors out of 65 billion with DVI-D input.

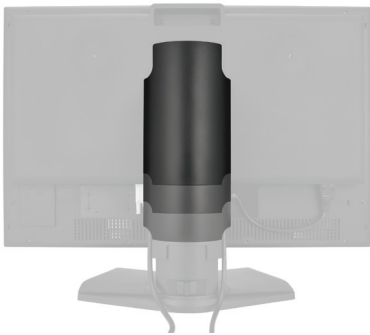


NEC Display Solutions
MultiProfiler

The PA242W features full a full range of ergonomic adjustments. In addition to tilt and swivel functionality, the height adjusts up to 150mm, and the display pivots between landscape and portrait orientations.



The PA242W's stand features complete cable management and a locking function for easier, safer transportability.



Available as an option for the PA242W, the SpectraView_{II}™ system uses a external color sensor to ensure the consistency and accuracy of the colors on your NEC display. SpectraView_{II} is the only software that calibrates the lookup tables (LUTs) in an NEC display, eliminating a loss of color caused by video card LUT calibration.



Specifications for MultiSync PA242W

MODEL	PA242W
DISPLAY	
Panel Technology	AH-IPS
Backlight Type	GB-R
Viewable Image Size	24.1"
Aspect Ratio	16:10
Native Resolution	1920 x 1200
Pixel Pitch	0.27mm
Pixels Per Inch	93 @ native resolution
Brightness (typical)	340 cd/m ²
Contrast Ratio (typical)	1000:1
Viewing Angle (typical)	178° Vert., 178° Hor. (89U/89D/89L/89R) @ CR>10
Response Time (typical)	8ms Rapid Response
Color Gamut*	
Adobe RGB Coverage/Size**	99.3% / 108.6%
NTSC Coverage/Size	94.8% / 103.7%
sRGB Coverage/Size	100% / 146.4%
Lookup Table	14-bit 3D
Displayable Colors	1.07 billion out of 4.3 trillion (10-bit DisplayPort or HDMI input); 16.7 million colors out of 1.05 billion color palette (DVI-D and VGA inputs)
Synchronization Range	
Horizontal (Analog/Digital)	31.5-93.8 and 118.4 KHz (analog) / 31.5-91.1 and 118.4 KHz (digital)
Vertical	50-85 Hz
Input Signal	
Video	Analog RGB 0.7 Vp-p/75 Ohms
Sync	Separate Sync: TTL Level (Positive/Negative); Composite Sync: TTL Level (Positive/Negative); Composite Sync on Green: (0.3Vp-p negative 0.7Vp-p positive)
Input Connectors	DisplayPort, HDMI, DVI-D, VGA
POWER CONSUMPTION	
On (typical)	56W
Power Savings Mode (typical)	0.2W
PHYSICAL SPECIFICATIONS	
Dimensions (WxHxD)	
Net (with stand)	21.9 x 14.8 - 20.7 x 8.9 in. / 556.8 x 378 - 528 x 227.6 mm
Net (without stand)	21.9 x 14.2 x 3.3 in. / 556.8 x 362.4 x 85 mm
Weight	
Net (with stand)	23.4 lbs. / 10.6 kg
Net (without stand)	16.3 lbs. / 7.4 kg
VESA Hole Configuration	100 x 100mm
ENVIRONMENTAL CONDITIONS	
Operating Temperature	41-95°F / 5-35°C
Operating Humidity	20 - 80%
Operating Altitude	6562 ft. / 2000m
Storage Temperature	14-140°F / -10-60°C
Storage Humidity	10-85%
Storage Altitude	40,000 ft. / 12,192m
Tropical Environment	Yes
ENVIRONMENTAL COMPLIANCE	
RoHS	Yes
LIMITED WARRANTY	
	4 years parts and labor, including backlight***
ADDITIONAL FEATURES	
	USB hub (2 up/3 down) with DisplaySync Pro, Picture by Picture, ICC Profile Emulation, Color Vision Emulation, 14-bit 3D gamma, Adobe RGB, DICOM, REC 709, ColorComp, overdrive, ECO Mode, cable management, tilt, swivel, pivot, 150mm height-adjustable stand with locking base, No Touch Auto Adjust, quick release stand, VESA Mount
SHIPS WITH	
	Setup sheet; Driver & Manual CD; Power cord; DisplayPort cable; DVI-D cable; USB cable; Mini DisplayPort to DisplayPort cable

*Color gamut size and coverage calculated as 2-D gamut area in CIE 1931 xy colorspace. Size is the total relative display gamut area and includes any colors outside the reference gamut. Coverage is the relative display gamut area contained inside the reference gamut. NTSC values provided for comparison purposes - modern broadcast video uses SMPTE-C, ITU-R BT, 709-5/sRGB or EBU primaries.

** AdobeRGB is a standard defined by Adobe Systems Incorporated.

*** Warranty restrictions apply. Contact your representative for details.