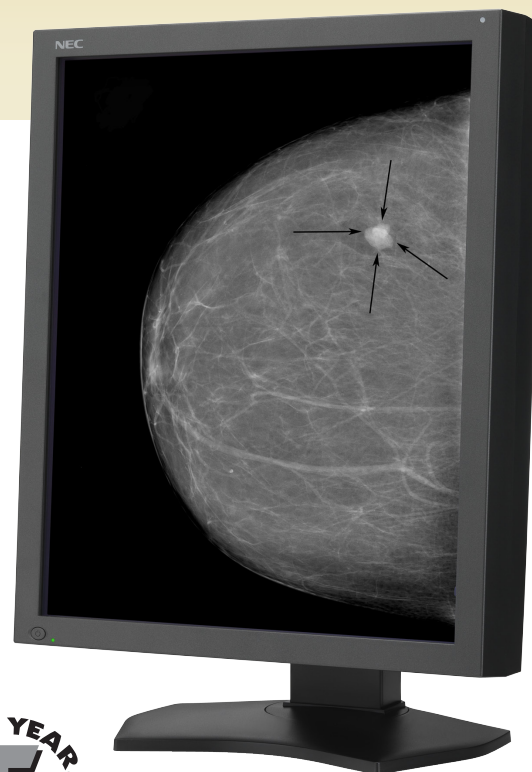
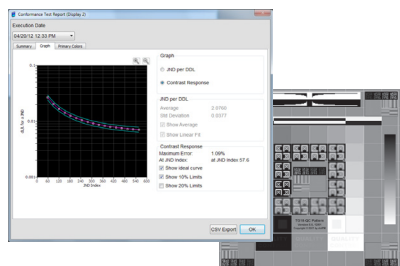


# NEC MultiSync® MD215MG

21.3" grayscale medical-grade LCD display ideal for ultra high-resolution diagnostic imaging

Specially designed for demanding applications including mammography and radiology, the 21.3" NEC MultiSync MD215MG 5MP display features a resolution of 2048 x 2560 and a pixel pitch of 0.165mm for film-like image reproduction without pixelization. The MD215MG has been built to support the most demanding Picture Archiving and Communication Systems (PACS) and modality requirements.

*GammaCompMD™ QA software, included with each display, ensures consistent image quality. The software provides a simple interface for conformance to the DICOM standard, while providing an easy-to-use QA environment for medical imaging. Optionally, GammaCompMD QA Server provides computer networks with centralized control and management of multiple display systems.*



## Highlights

- In-Plane Switching (IPS) LCD technology provides accurate grayscale reproduction and wide viewing angles
- 11.9-bit lookup table (LUT) reproduces up to 256 shades of gray from a palette of 3826
- DICOM GSDF conformance produces images that are visible in a linear manner to the human eye, guaranteeing precise image reproduction for diagnosis
- Integrated backlight sensor constantly monitors and adjusts brightness and maintains the factory DICOM GSDF calibration
- The MD215MG's design combines the best in form and function to meet ergonomic standards and provide users with flexibility and ease of use.
- The durable base can be easily adjusted for tilt, swivel and height based on the user's preferences. The VESA-compliant display also pivots between portrait and landscape orientation.
- Calibration and Quality Assurance software available for download at [www.necdisplay.com/medical](http://www.necdisplay.com/medical)

**NEC MULTISYNC MD SERIES** The clear choice in diagnostic displays.

## Specifications for MD215MG

MODEL	MD215MG
<b>DISPLAY</b>	
Viewable Image Size	21.3"
Color Type	Grayscale
MegaPixels	5MP
Native Resolution	2048 x 2560
Pixel Pitch	0.165mm
Pixels Per Inch	154 @ native resolution
Brightness (typical)	500 cd/m <sup>2</sup> calibrated ; 1100 cd/m <sup>2</sup> max.
Contrast Ratio (typical)	600:1
Viewing Angle	170° Vert., 170° Hor. (85U/85D/85L/85R) @ CR>20
Response Time	18ms
Lookup Table	11.9-bit
Displayable Colors	256 levels of gray out of a palette of 3826
<b>Synchronization Range</b>	
Horizontal (Analog/Digital)	30-135 kHz
Vertical	25-75 Hz
<b>CONNECTIVITY</b>	
Input Connectors	DVI-D
<b>POWER CONSUMPTION</b>	
On (typical)	90W
Power Savings Mode (typical)	10W
<b>PHYSICAL SPECIFICATIONS</b>	
<b>Dimensions (WxHxD)</b>	
Net (with stand)	18.7 x 15.9-21.3 x 9 in. / 474.5 x 403.3-541.8 x 227.6mm
Net (without stand)	18.7 x 15.4 x 4.1 in. / 474.5 x 390 x 103.4mm
<b>Weight</b>	
Net (with stand)	24.5 lbs. / 11.1 kg
Net (without stand)	17.4 lbs. / 7.9 kg
VESA Hole Configuration	100 x 100mm
<b>ENVIRONMENTAL CONDITIONS</b>	
Operating Temperature	41-104°F / 5-40°C
Operating Humidity	30 - 80%
Operating Altitude	9842 ft. / 3000m
Storage Temperature	-4-140°F / -20-60°C
Storage Humidity	10 - 85%
Storage Altitude	32,808 ft. / 10,000m
<b>LIMITED WARRANTY</b>	5 years, including Advanced Overnight Exchange
<b>ADDITIONAL FEATURES</b>	DICOM GSDF calibrated; Digital Uniformity Correction; Two-port USB hub; Pivot; Tilt; Swivel; Height-adjustable stand
<b>SHIPS WITH</b>	Power cord; DVI-D Dual Link cable; Setup sheet; AC adapter; USB Cable; Quick Reference Guide
<b>OPTIONAL ACCESSORIES</b>	Nvidia dual-head video card (MDN-Q2000D); AMD dual-head video card (MDA-V5800D); Matrox Xenia Pro triple-head video card (MDM-XENPRO); Medical calibration sensor (MDSVSENSOR2); Medical calibration sensor (MDSVSENSOR3)